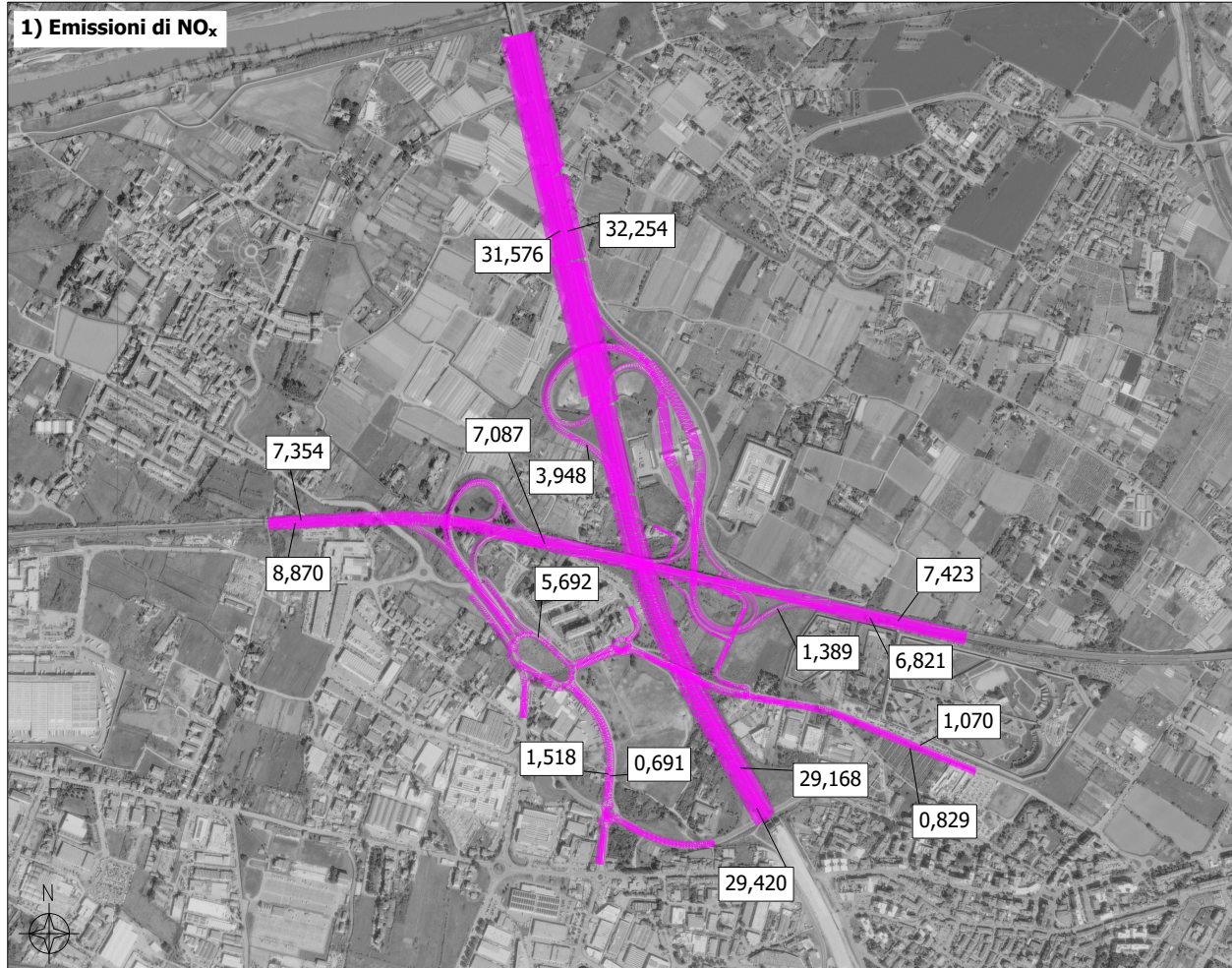
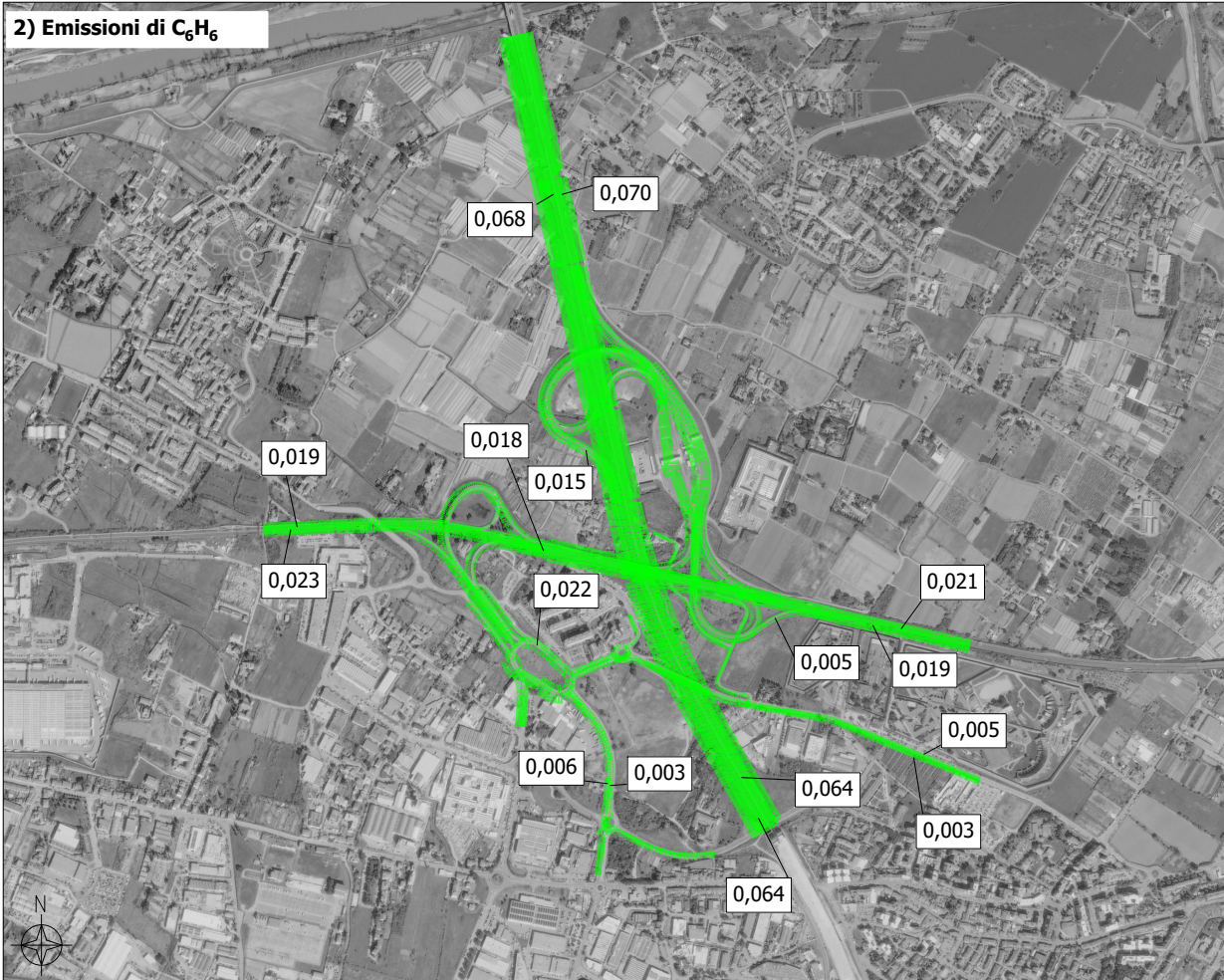


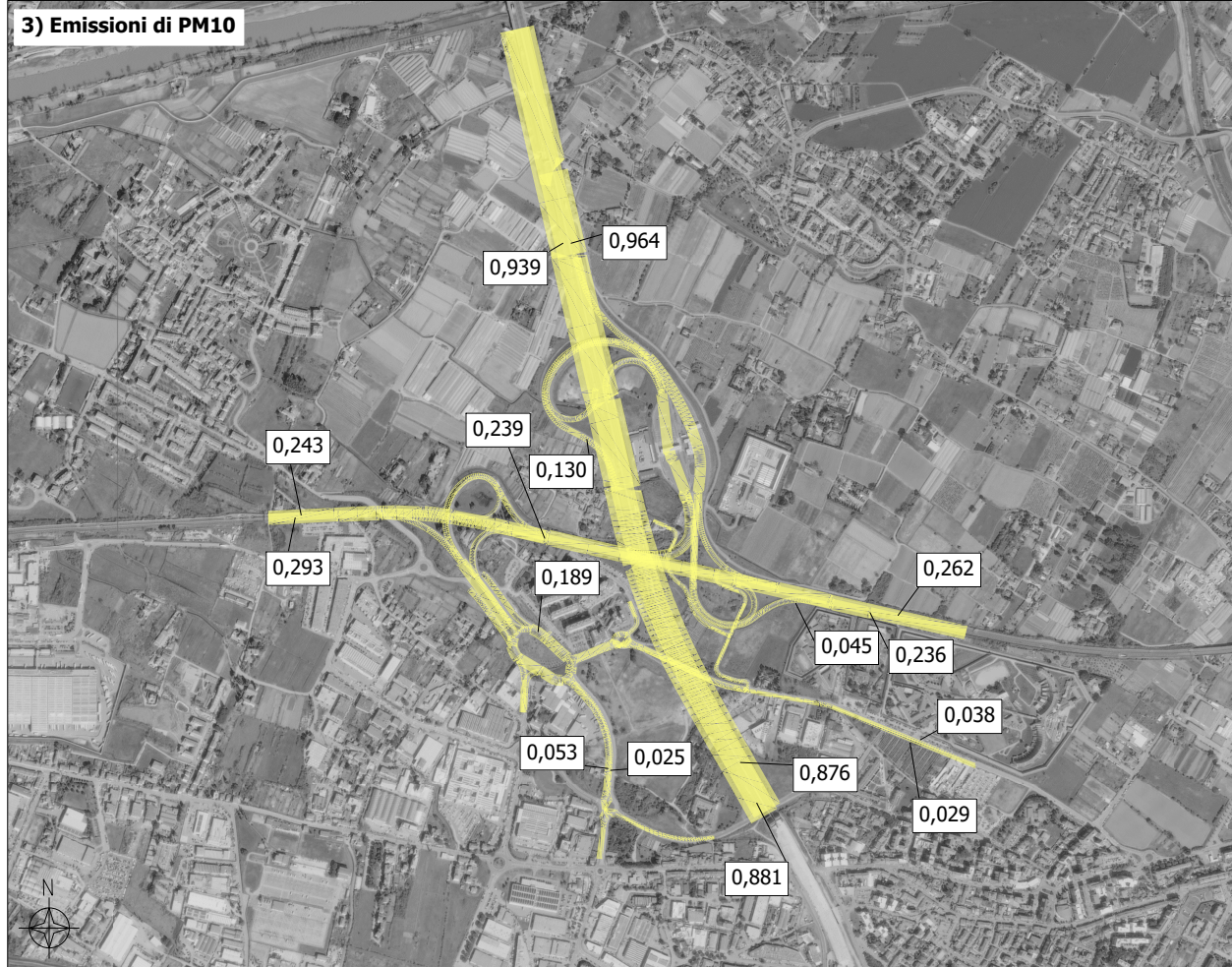
1) Emissioni di NO<sub>x</sub>



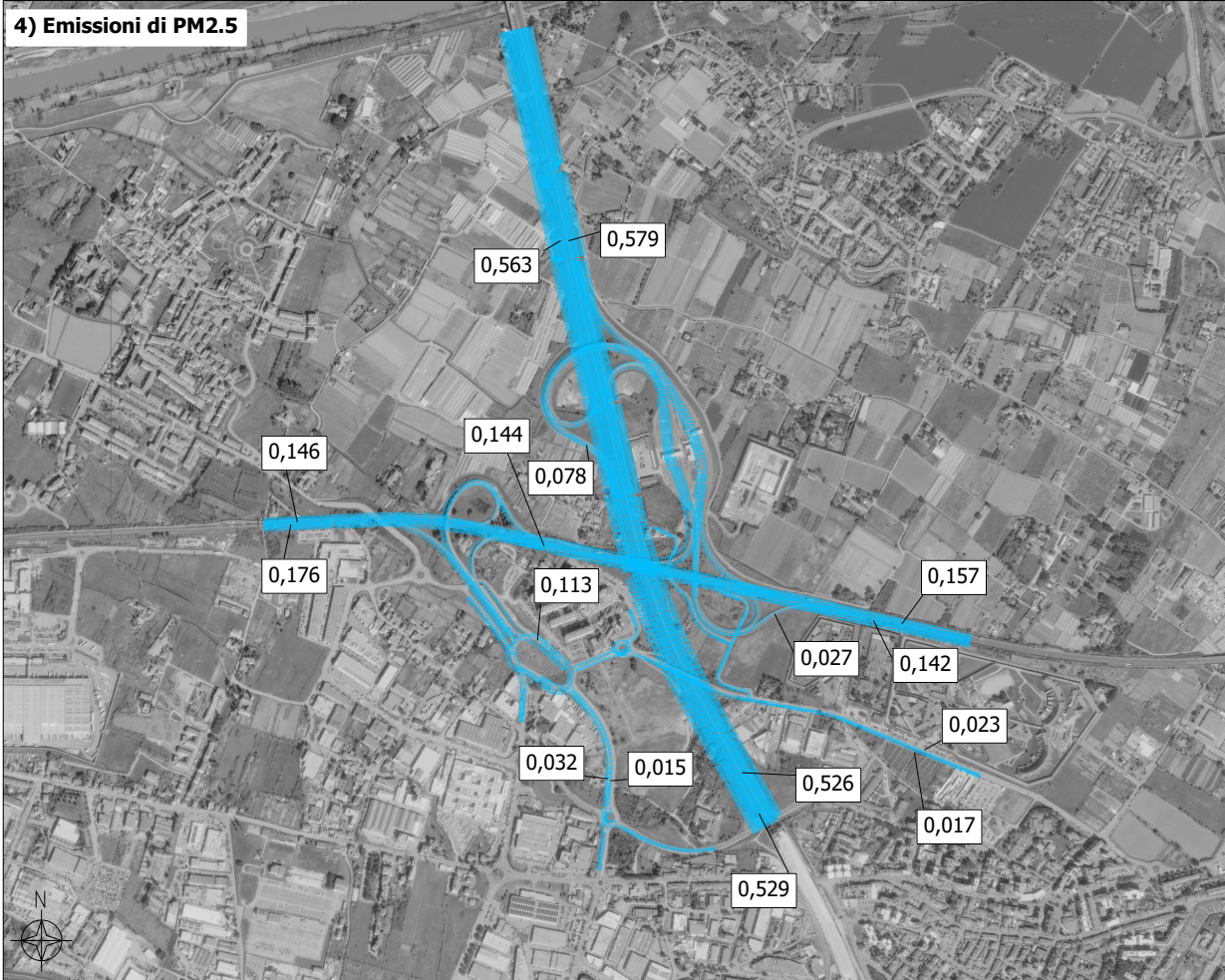
2) Emissioni di C<sub>6</sub>H<sub>6</sub>



3) Emissioni di PM10



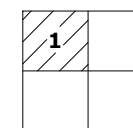
4) Emissioni di PM2.5



LEGENDA

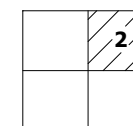
NO<sub>x</sub> - Emissioni [t/km]

- 0,00 - 1,49
- 1,50 - 5,99
- 6,00 - 14,99
- 15,00 - 29,99
- > 30,00



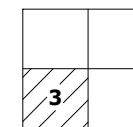
C<sub>6</sub>H<sub>6</sub> - Emissioni [t/km]

- 0,00 - 0,0024
- 0,0025 - 0,0099
- 0,010 - 0,024
- 0,025 - 0,049
- > 0,050



PM10 - Emissioni [t/km]

- 0,00 - 0,039
- 0,04 - 0,159
- 0,16 - 0,399
- 0,40 - 0,799
- > 0,80



PM2.5 - Emissioni [t/km]

- 0,00 - 0,029
- 0,03 - 0,099
- 0,10 - 0,249
- 0,25 - 0,499
- > 0,50

