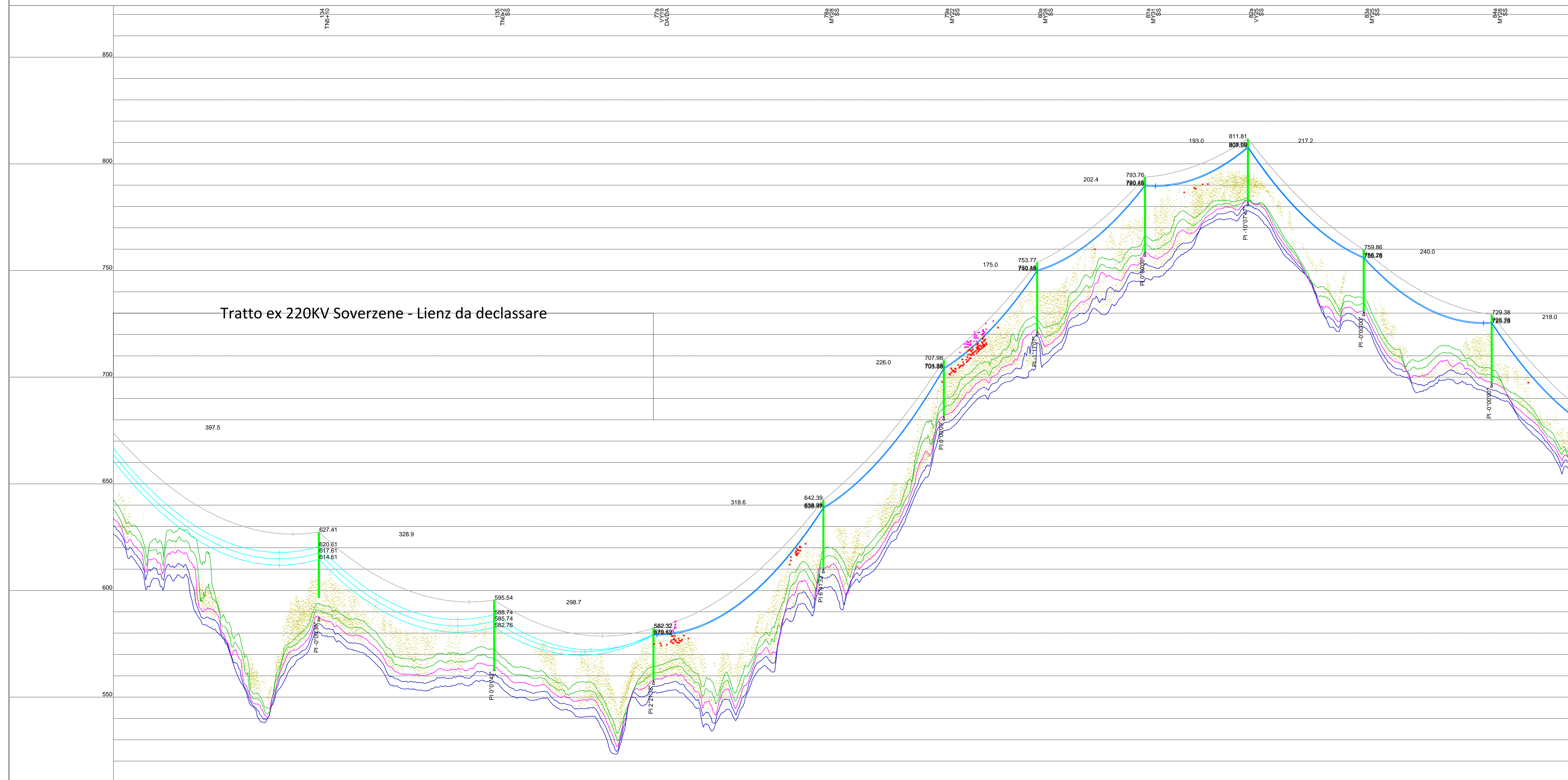


Tratto ex 220KV Soverzene - Lienz da declassare



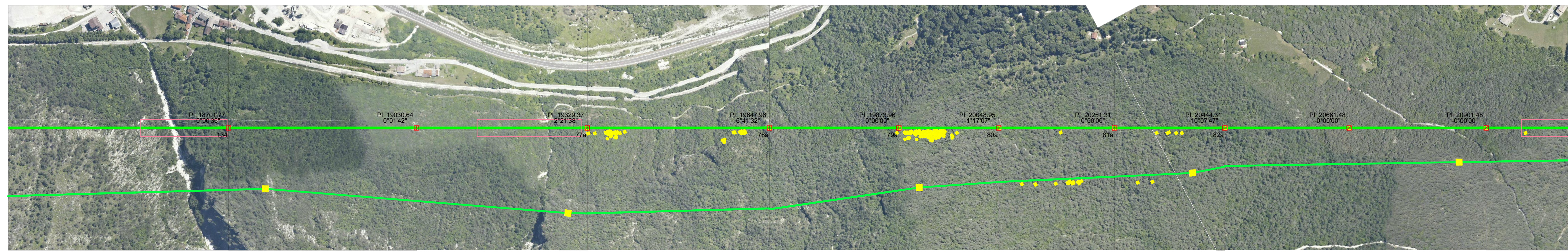
Progressiva di progetto (m)	M=756463.36 F=5138467.32	M=756349.51 F=5138159.73	M=756245.96 F=5137878.57	M=756123.31 F=5137584.54	M=756012.59 F=5137294.86	M=755926.86 F=5137004.96	M=755831.71 F=5136715.11	M=755740.95 F=5136425.44	M=755674.13 F=5136135.41	M=755600.29 F=5135845.19
Quota terreno (m)	5827.37	6156.24	6454.97	6773.56	6999.56	7174.55	7376.91	7569.91	7767.08	8027.08
N° Sostegno	134	135	77a	78a	79a	80a	81a	82a	83a	84a
Tipo sostegno	TN5+10	TN0+2	VY19	MY28	MY22	MY28	MY31	VY25	MY25	MY28
Armamento	SS	SS	DA/DA	SS	SS	SS	SS	SS	SS	SS
H utile/totale (m)	18.00/39.80	20.00/31.00	21.10/24.30	28.00/32.10	22.00/26.10	28.00/32.10	31.00/35.10	25.00/29.30	25.00/29.10	28.00/32.10
Campata (m)	397.46	328.87	298.73	318.59	226.00	174.99	202.36	193.00	217.16	240.00

Dissuasori

Progressiva profilo (m)

40.0 m  
Scala Oriz.

10.0 m  
Scala Vert.



RAZIONALIZZAZIONE E SVILUPPO RTN NELLA MEDIA VALLE DEL PIAVE  
 Linea 220KV PELOS - GARDONA (23670B1)  
 STUDIO DI IMPATTO AMBIENTALE  
 Profilo della vegetazione sotto le linee aeree