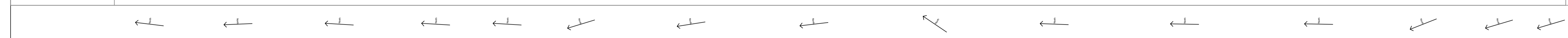
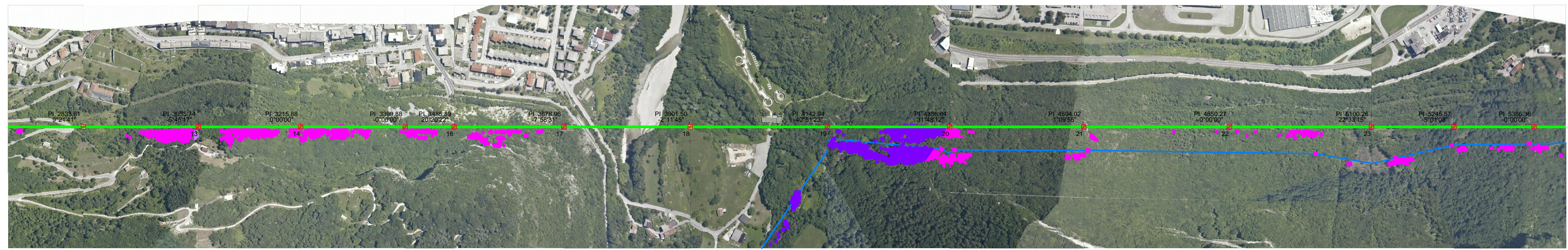


| Progressiva di progetto (m) | M=754097.58 F=5123771.82 | M=754089.07 F=5123075.86 | M=754099.56 F=5123898.03 | M=754110.26 F=5123712.34 | M=754115.28 F=5123626.48 | M=754058.85 F=5128441.85 | M=754023.94 F=5128222.06 | M=753995.24 F=5127982.33 | M=754115.61 F=5127804.07 | M=754124.77 F=5127669.26 | M=754129.51 F=5127312.05 | M=754134.13 F=5127062.11 | M=754080.89 F=5126926.90 | M=754040.86 F=5122791.80 |
|-----------------------------|-----------------------------|-----------------------------|-----------------------------|-----------------------------|-----------------------------|-----------------------------|-----------------------------|-----------------------------|-----------------------------|-----------------------------|-----------------------------|-----------------------------|-----------------------------|-----------------------------|
| Quota terreno (m) | 2833.61 | 3035.74 | 3215.88 | 3399.88 | 3485.89 | 3678.96 | 3901.50 | 4142.94 | 4358.04 | 4594.02 | 4850.27 | 5100.26 | 5245.57 | 5386.36 |
| N° Sostegno | 12 | 13 | 14 | 15 | 16 | 17 | 18 | 19 | 20 | 21 | 22 | 23 | 24 | 25 |
| Tipo sostegno | YY25 | MY19 | MY25 | MY19 | YY25 | MY22 | YY16 | EY22 | EY22 | MY25 | MY25 | VY25 | MY19 | MY22 |
| Armamento | DS | SS | SS | SS | SS | DS | DA/DA | DA/DA | DA/DA | SS | SS | SS | SS | SS |
| H utile/totale (m) | 24.30/29.30 | 19.00/23.10 | 25.00/29.10 | 19.00/23.10 | 24.30/29.30 | 22.00/26.10 | 18.10/21.30 | 22.00/25.20 | 22.00/25.20 | 25.00/29.10 | 25.00/29.10 | 24.30/29.30 | 19.00/23.10 | 22.00/26.10 |
| Campata (m) | 241.44 | 202.14 | 180.14 | 184.00 | 86.01 | 193.07 | 222.54 | 241.43 | 215.10 | 235.98 | 256.26 | 249.99 | 145.31 | 140.79 |



40.0 m
Scala Horiz.

10.0 m
Scala Vert.



RAZIONALIZZAZIONE E SVILUPPO RTN NELLA MEDIA VALLE DEL PIAVE
Linea 220KV GARDONA - DESEDAN (23670B2)
STUDIO DI IMPATTO AMBIENTALE
Profilo della vegetazione sotto le linee aeree