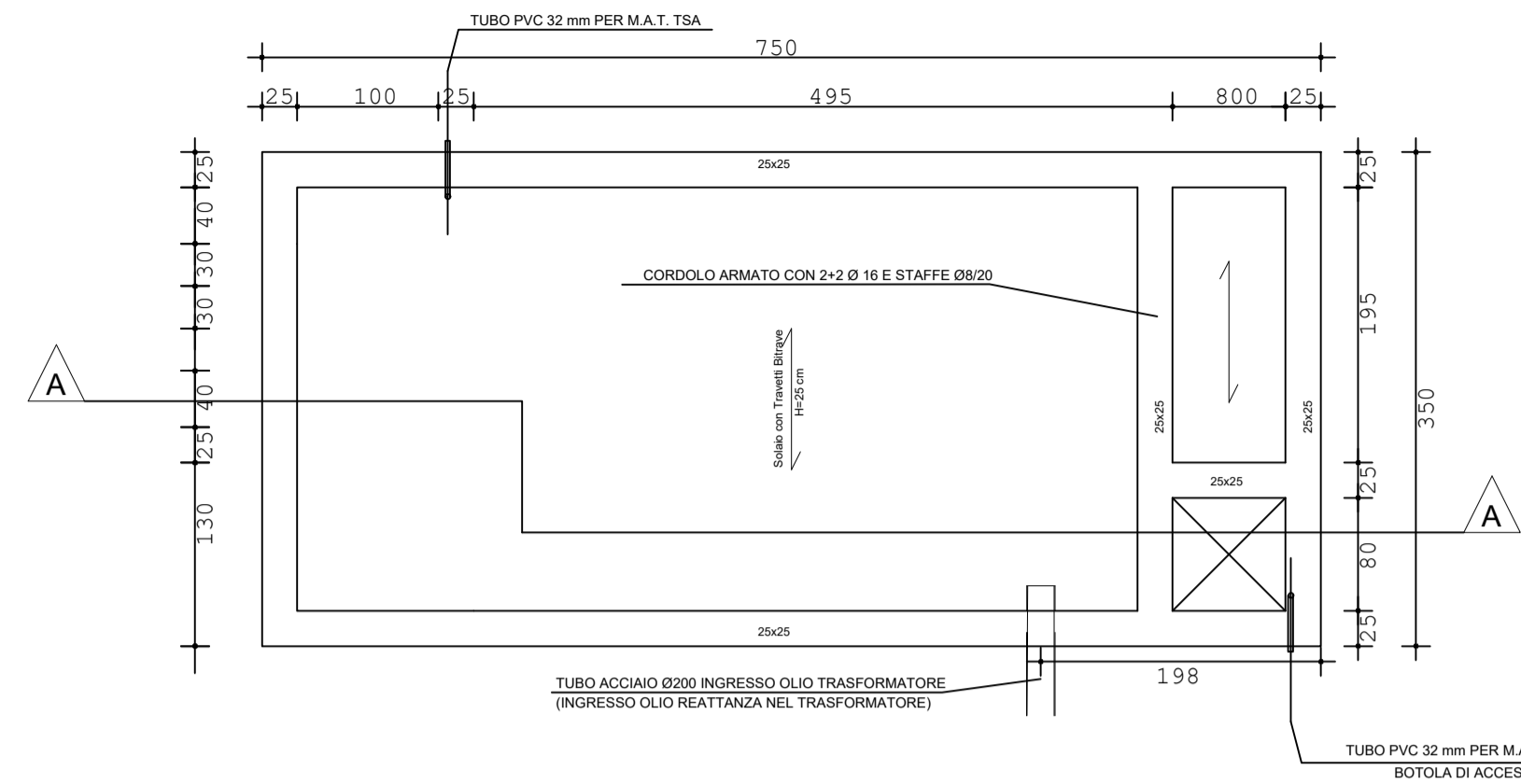
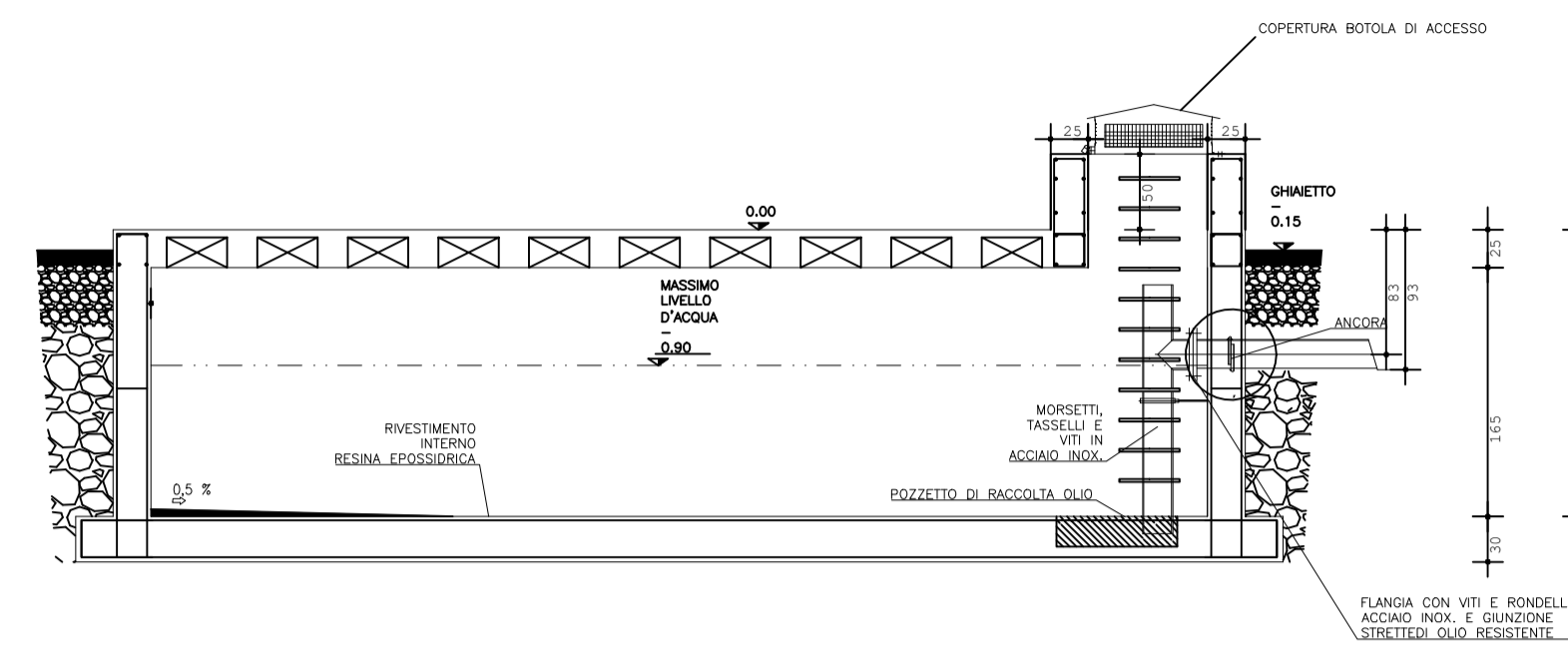


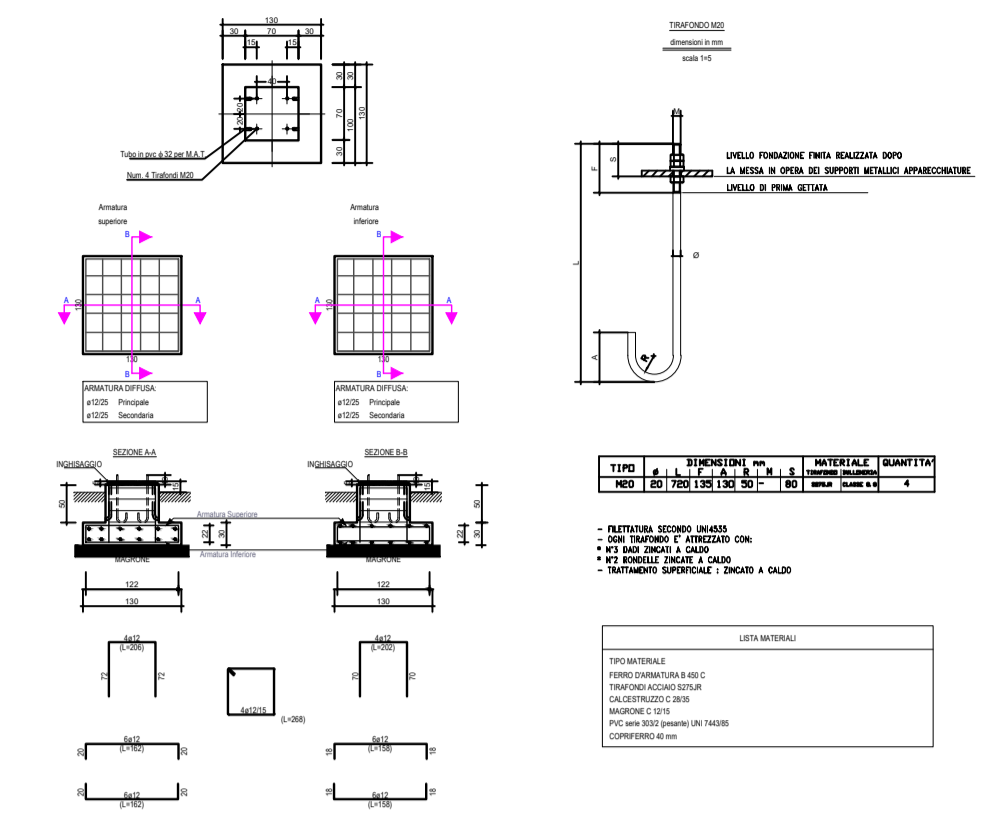
COPERTURA VASCA OLIO



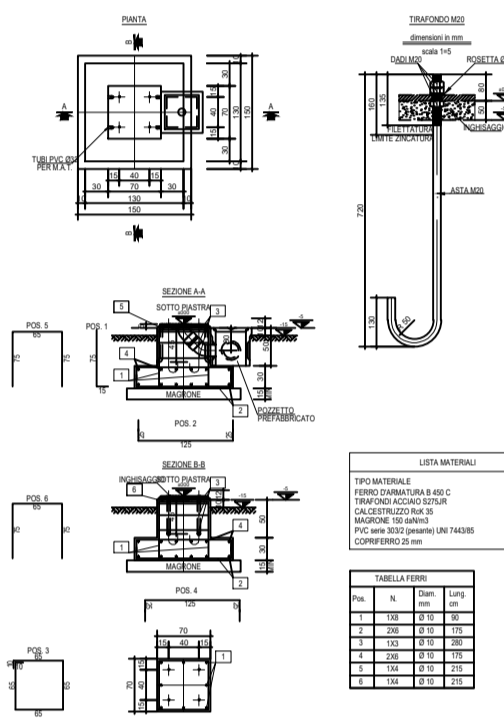
SEZIONE A - A



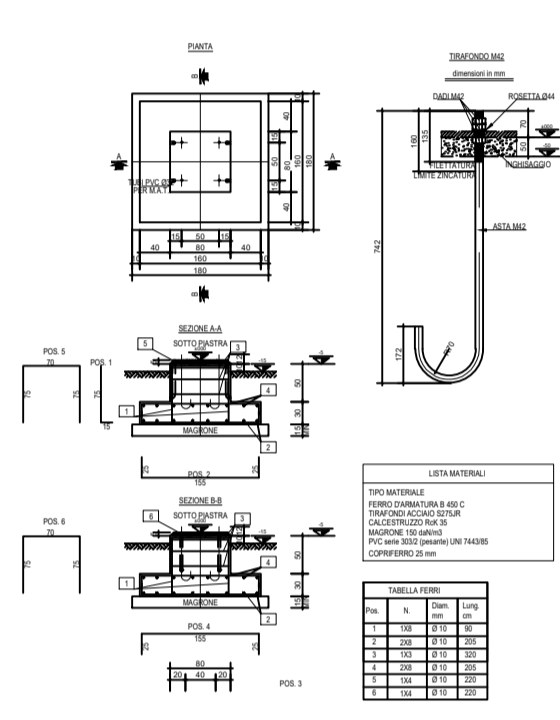
A8 - NEUTRO TR



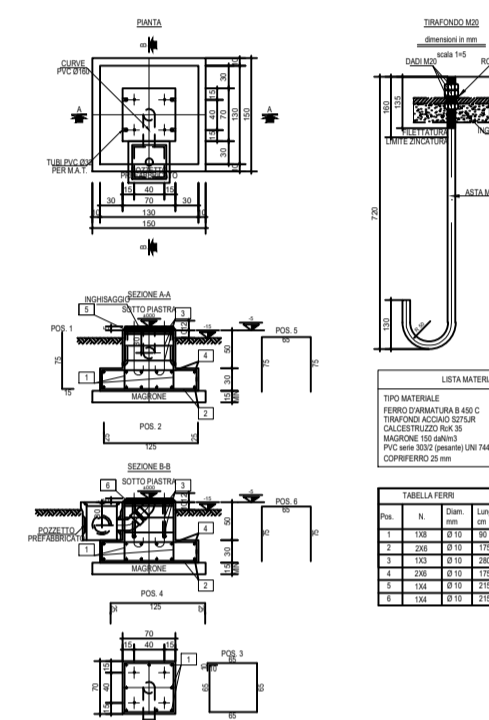
A0 - TERMINALE CAVO AT + A1 - SCARICATORE



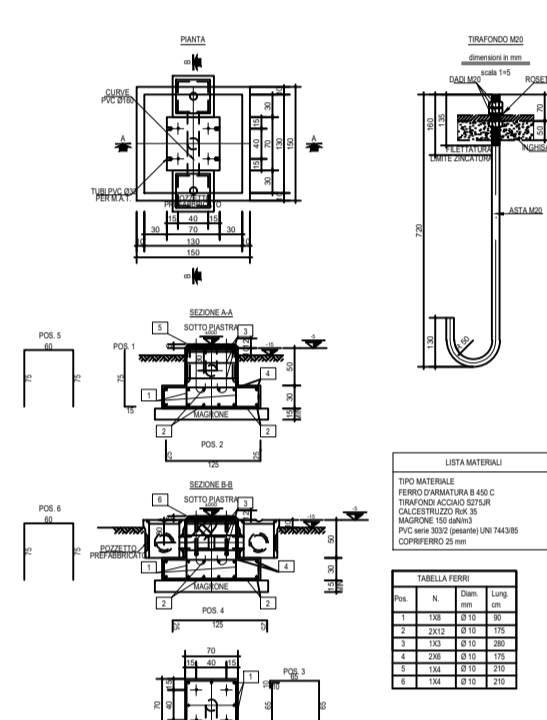
A1 - SCARICATORE



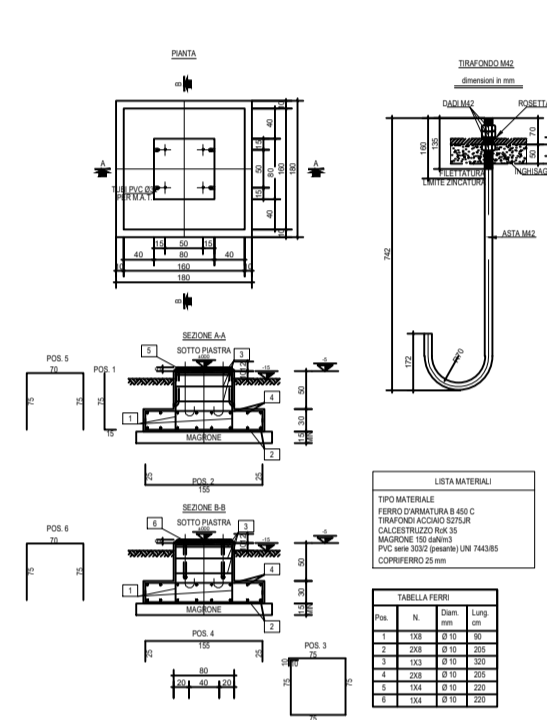
A2 - TRASFORMATORE DI TENSIONE (TV)



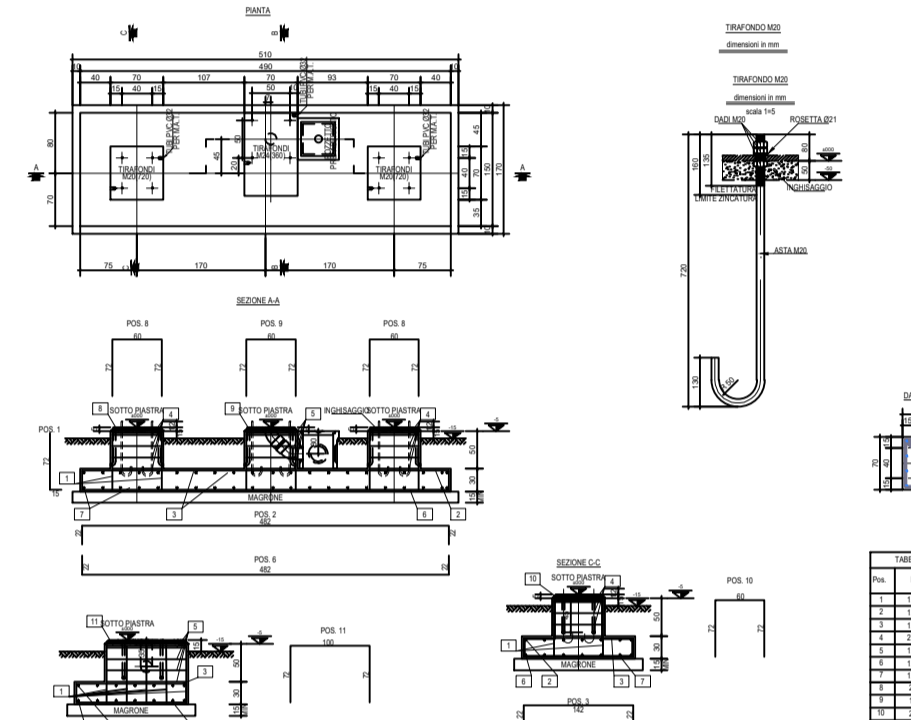
A4 - TRASFORMATORE DI CORRENTE (TA)



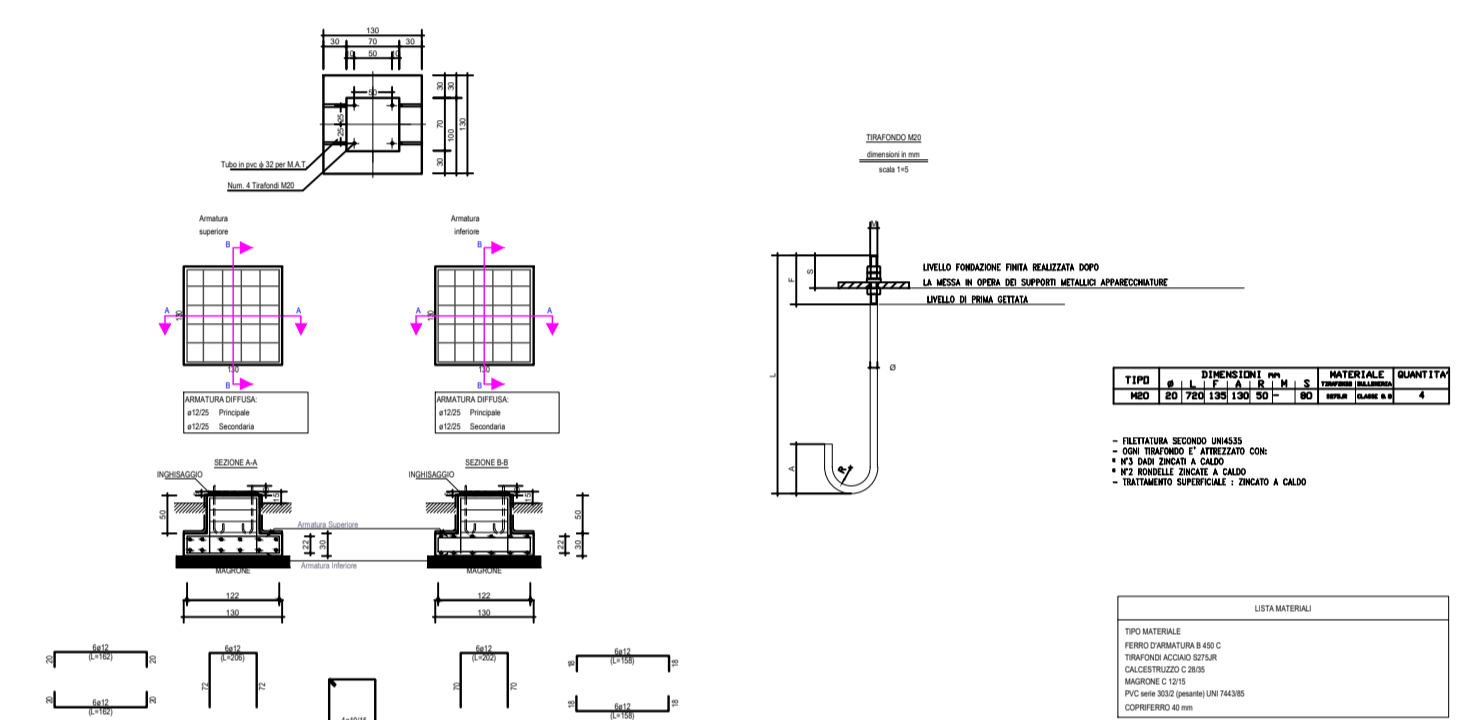
A5 - INTERRUITTORE AT



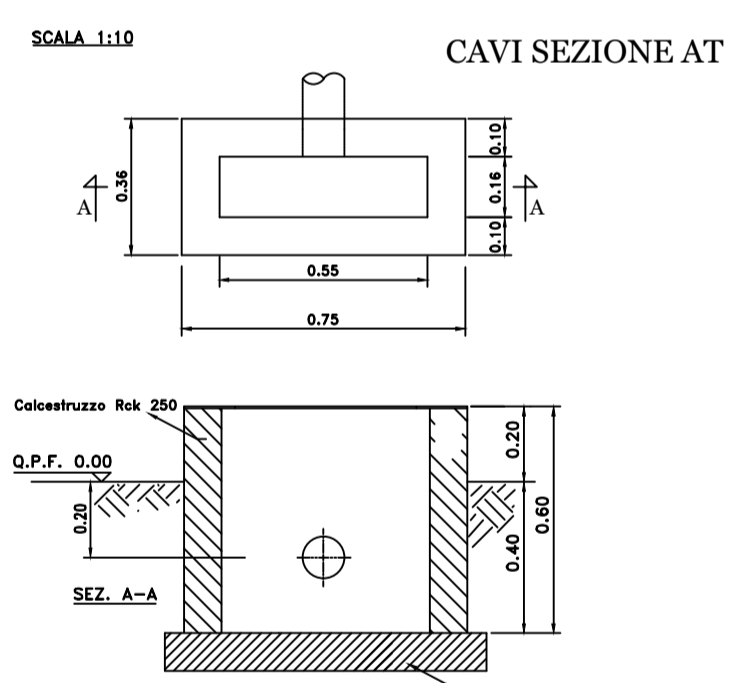
A3 - SEZIONATORE ORIZZONTALE AT



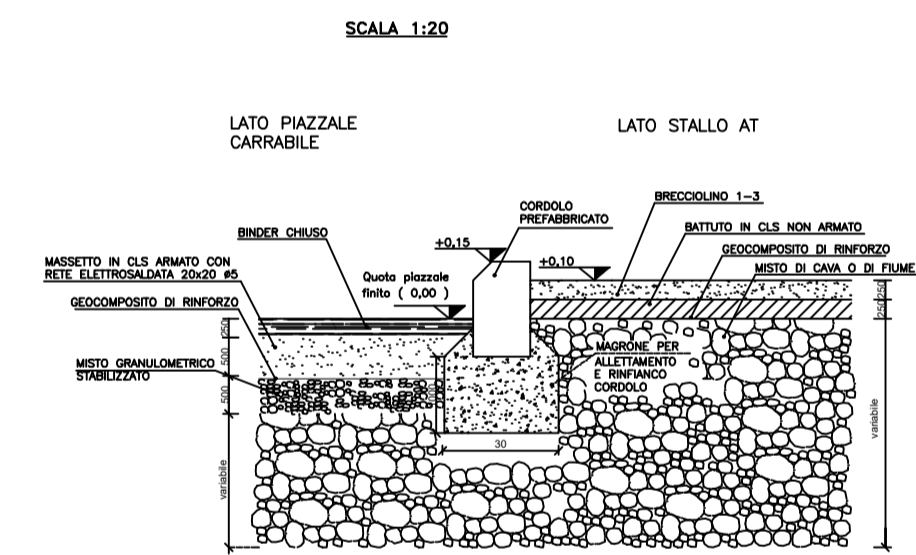
A12 - ROMPI TRATTA



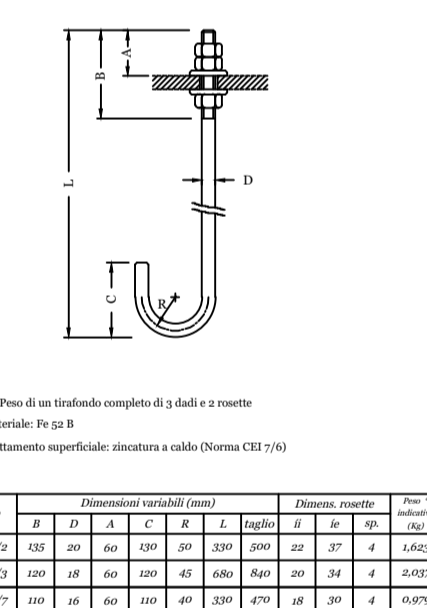
BASAMENTO PER ARMADIO SMISTAMENTO



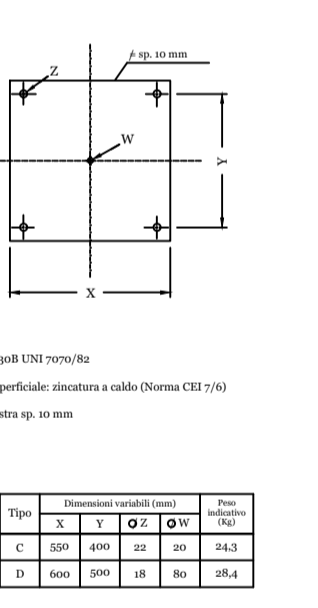
STRATIGRAFIA PIAZZALE



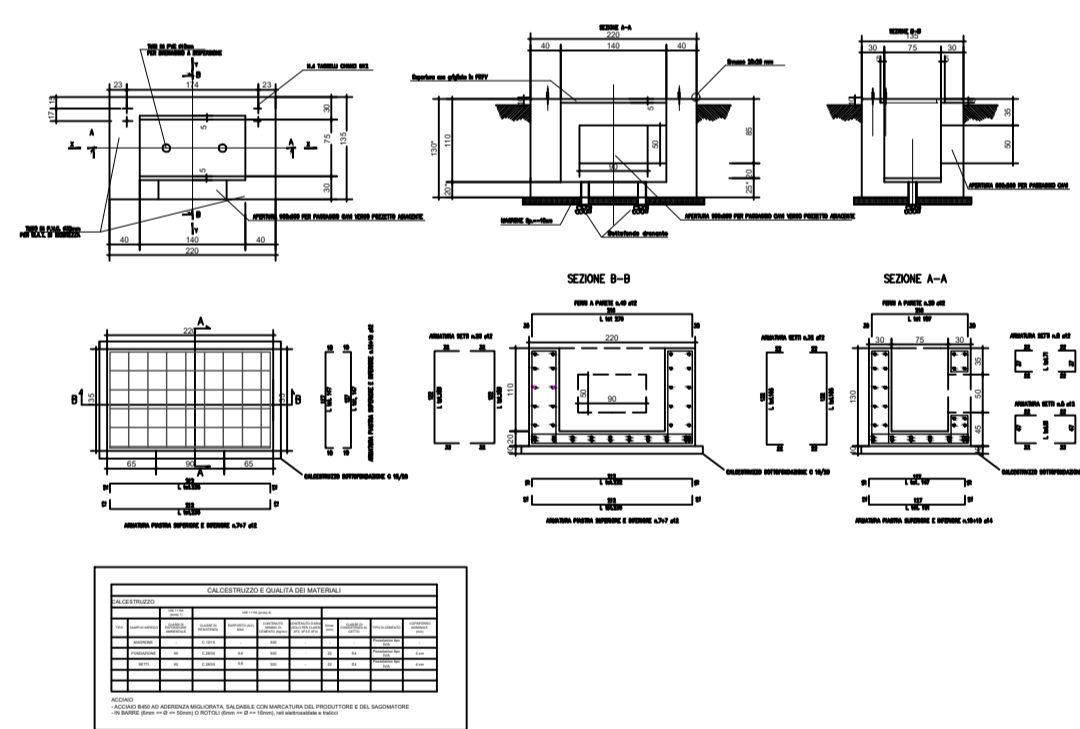
Tirafondi unificati per fissaggio strutture



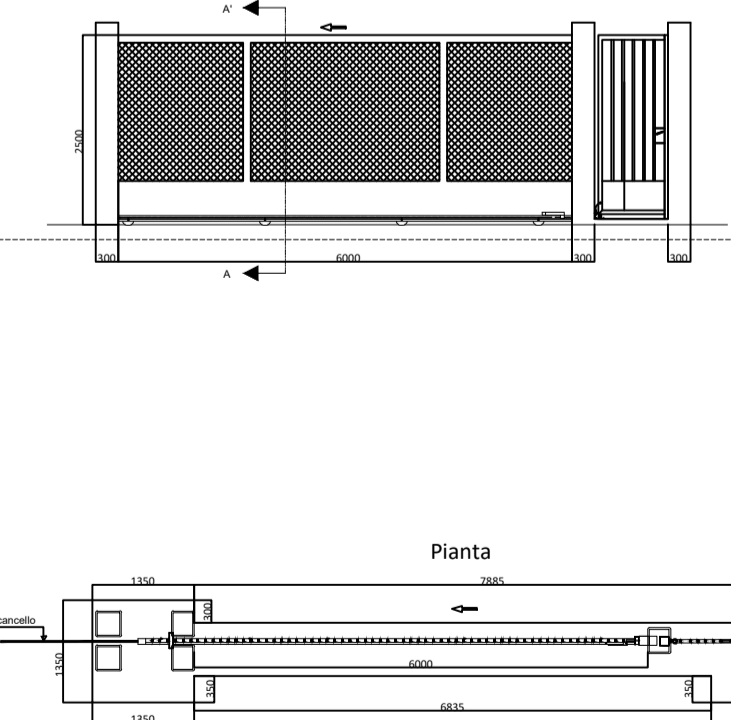
CONTROPIASTRE PER STRUTTURE TUBOLARI



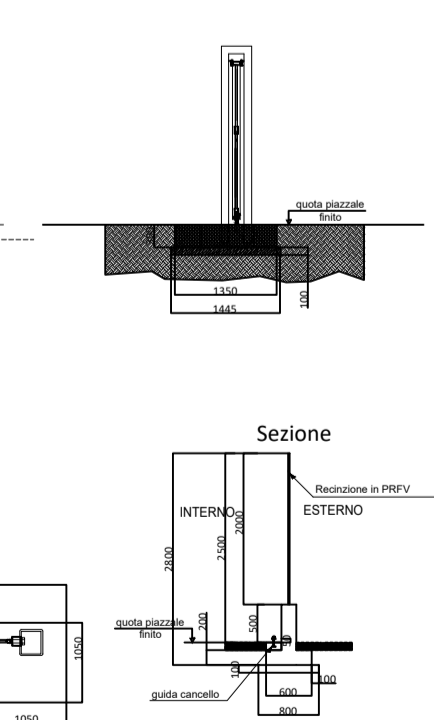
A13 - CASTELLETTO ARRIVO CAVI MT



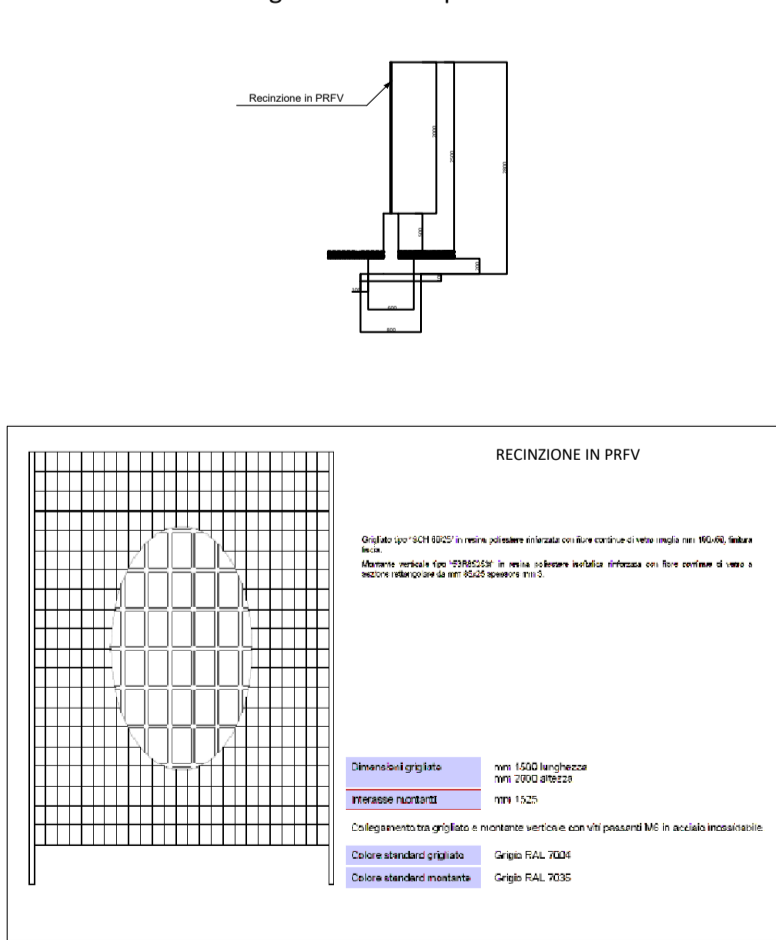
Prospetto



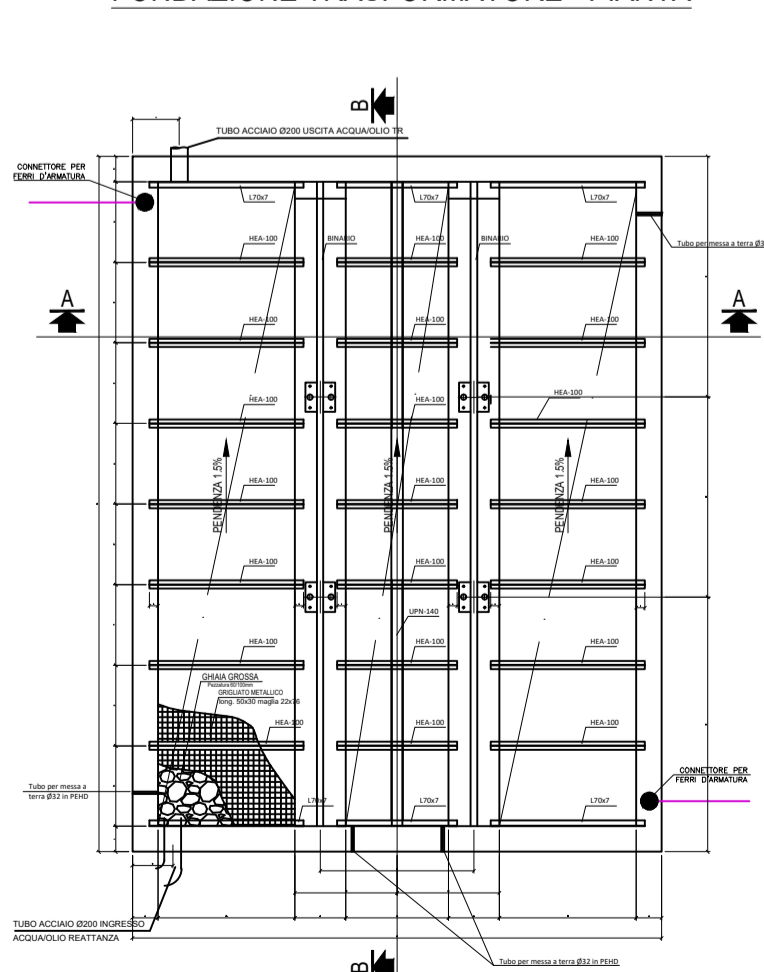
Sezione A-A'



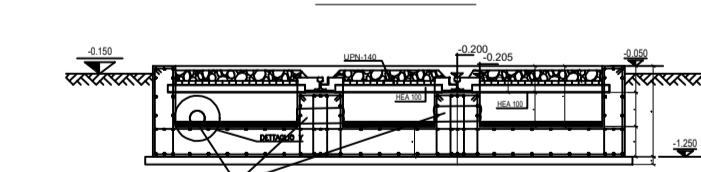
Dettaglio recinzione perimetrale



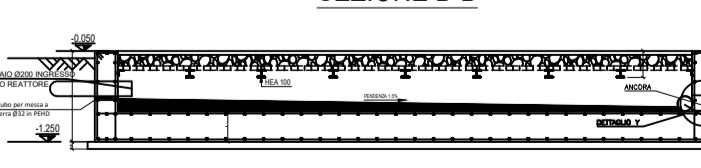
FONDAZIONE TRASFORMATORE - PIANTA



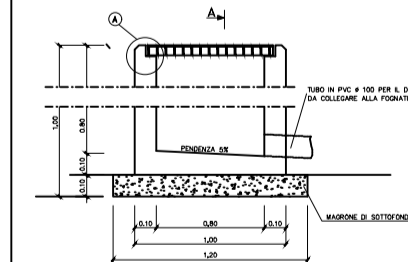
SEZIONE A-A



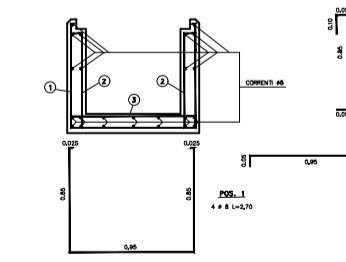
SEZIONE B-B



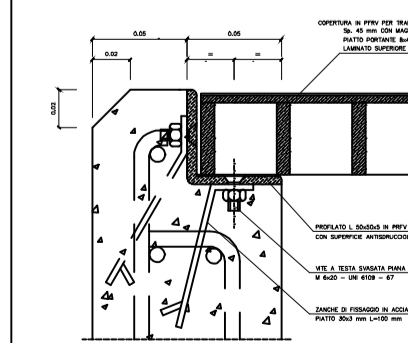
SEZIONE TRASVERSALE CUNICOLO CAVI AT



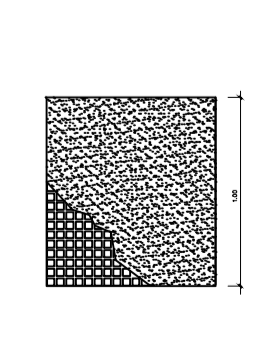
ARMATURA CUNICOLO CAVI AT



PARTICOLARE "A"



COPERTURA PRFV PER TRAFFICO MEDIO PESANTE



NOTA  
- I CANCELLI IN CARPENTERIA METALLICA POTRANNO ESSERE ANCHE DI TIPO COMMERCIALE

\* LE DIMENSIONI DELLE MASSE ED ORIGINI DEI PROFILATI E DEI MATERIALI DEVONO DI TIPO COMMERCIALE

Regione: SICILIA  
Provincia: CATANIA  
Comuni: CASTEL DI IUDICA, RAMACCA

Impianto fotovoltaico da 217,060 MWp  
PROGETTO DEFINITIVO

TITOLO:  
Stazione di Utente e collegamento alla rete -  
Particolari costruttivi

TAVOLA:  
73.20.01.W30  
1 di 1

Progettazione

**3E** 3E Ingegneria S.r.l.  
Via G. Volpe n.92  
56121 PISA  
www.3eingegneria.it  
info@3eingegneria.it



| Data        | Rev. | DESCRIZIONE        | Elaborato e controllato da: | Approvato da: |
|-------------|------|--------------------|-----------------------------|---------------|
| Giugno 2023 | 02   | REVISIONE GENERALE | 3E Ingegneria Srl           | IBVI 5 Srl    |
| Mar. 2022   | 01   | REVISIONE GENERALE | 3E Ingegneria Srl           | IBVI 5 Srl    |
| Sett. 2021  | 0    | PRIMA EMISSIONE    | 3E Ingegneria Srl           | IBVI 5 Srl    |

PROPRIONTE:  
**IBVI 5 s.r.l.**  
Viale Amedeo Duca D'Aosta,76  
39100 Bolzano (BZ)  
IBVI5sr@Pec.it

Proprietà esclusiva della Società sopra indicate, utilizzo e duplicazione vietate senza autorizzazione scritta.