



**COMUNE DI  
TEMPIO PAUSANIA**



**REGIONE AUTONOMA  
DELLA SARDEGNA**



**COMUNE DI  
AGLIENTU**

**PROGETTO PER LA REALIZZAZIONE  
E L'ESERCIZIO DI UN IMPIANTO  
DI PRODUZIONE DI ENERGIA ELETTRICA  
DA FONTE EOLICA DENOMINATO  
"PARCO EOLICO BASSACUTENA",  
DELLA POTENZA DI 61,2 MW, LOCALIZZATO  
NEL COMUNE DI TEMPIO PAUSANIA  
E DELLE SOLE OPERE ED INFRASTRUTTURE  
CONNESSE PER IL COLLEGAMENTO  
IN ANTENNA 36 KV CON UNA NUOVA  
STAZIONE ELETTRICA (SE) DELLA RTN  
A 150 KV/36KV DA INSERIRE IN ENTRA-ESCE  
ALLA LINEA RTN A 150 KV "AGLIENTU  
S.TERESA", SITA NEL COMUNE DI AGLIENTU**

## PROPONENTE

**MYT EOLO 1 S.R.L.**  
Via Vecchia Ferriera 22  
36100 Vicenza (VI)  
P.IVA 04436470241  
REGISTRO IMPRESE VI-397007

## PROGETTISTI

**ING. CARLO PERUZZI**  
Via Pallone 6  
37121 Verona (VR)  
P.IVA 03555350234  
PEC carlo.peruzzi@ingpec.eu

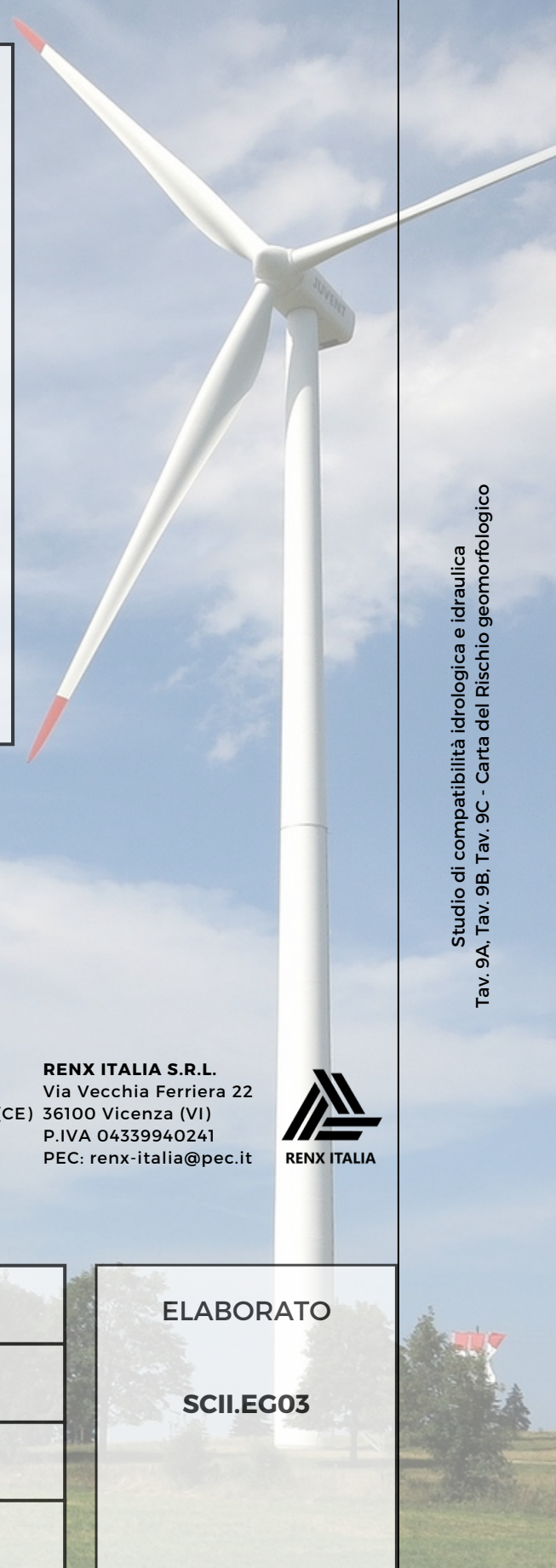
**ING. ANGELO MORLANDO**  
Piazza delle feste, 8  
81030 - Marina di Pinetamare - Castel Volturno (CE)  
P.I.V.A. : 02734380617  
PEC: angelo.morlando@pec.libero.it

**RENX ITALIA S.R.L.**  
Via Vecchia Ferriera 22  
36100 Vicenza (VI)  
P.IVA 04339940241  
PEC: renx-italia@pec.it









DATA	REVISIONE

ELABORATO
<b>SCII.EG03</b>





## **12.14 TAVOLE GRAFICHE NN° 9A - 9B - 9C: CARTA DEL RISCHIO GEOMORFOLOGICO**

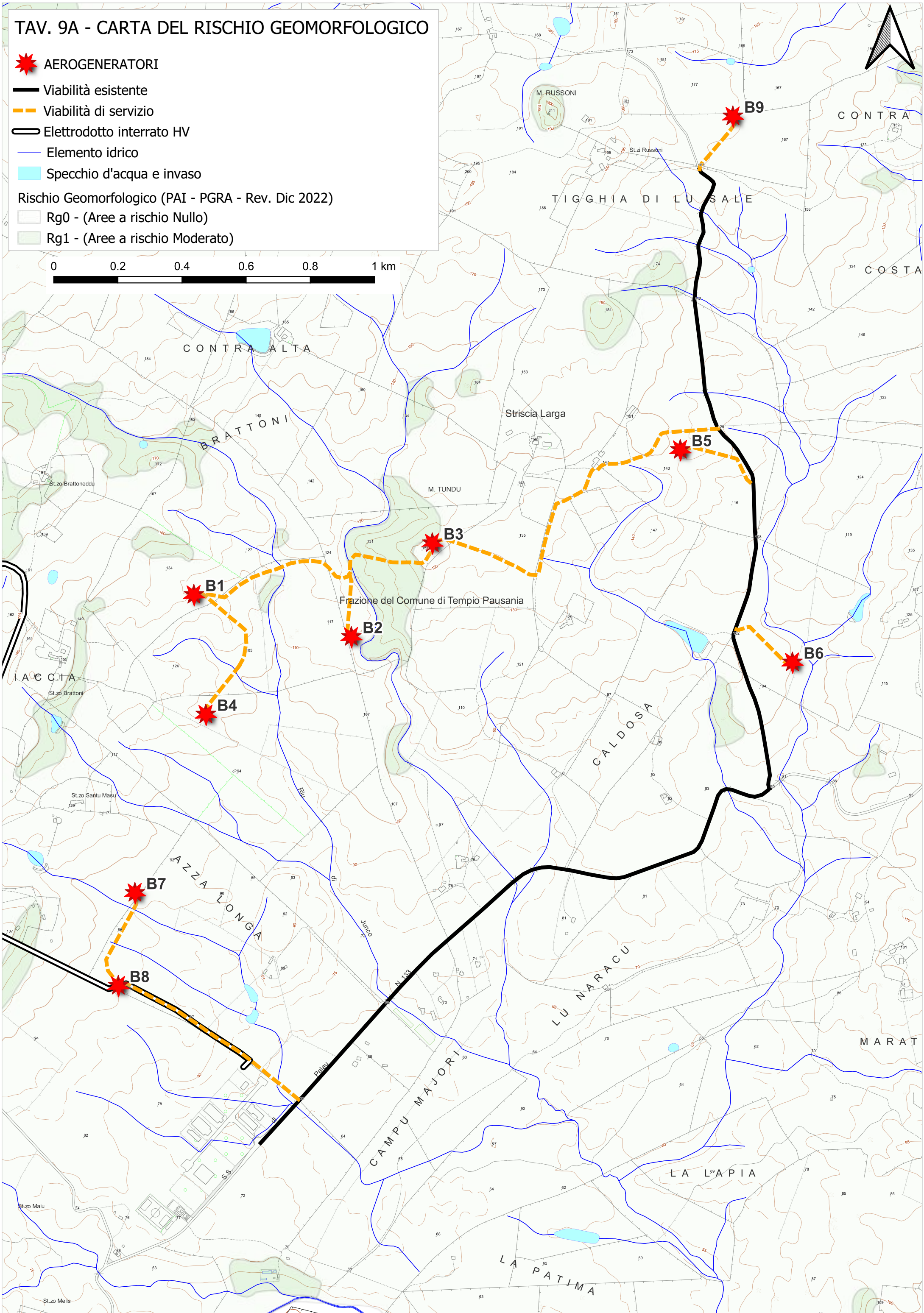
# TAV. 9A - CARTA DEL RISCHIO GEOMORFOLOGICO

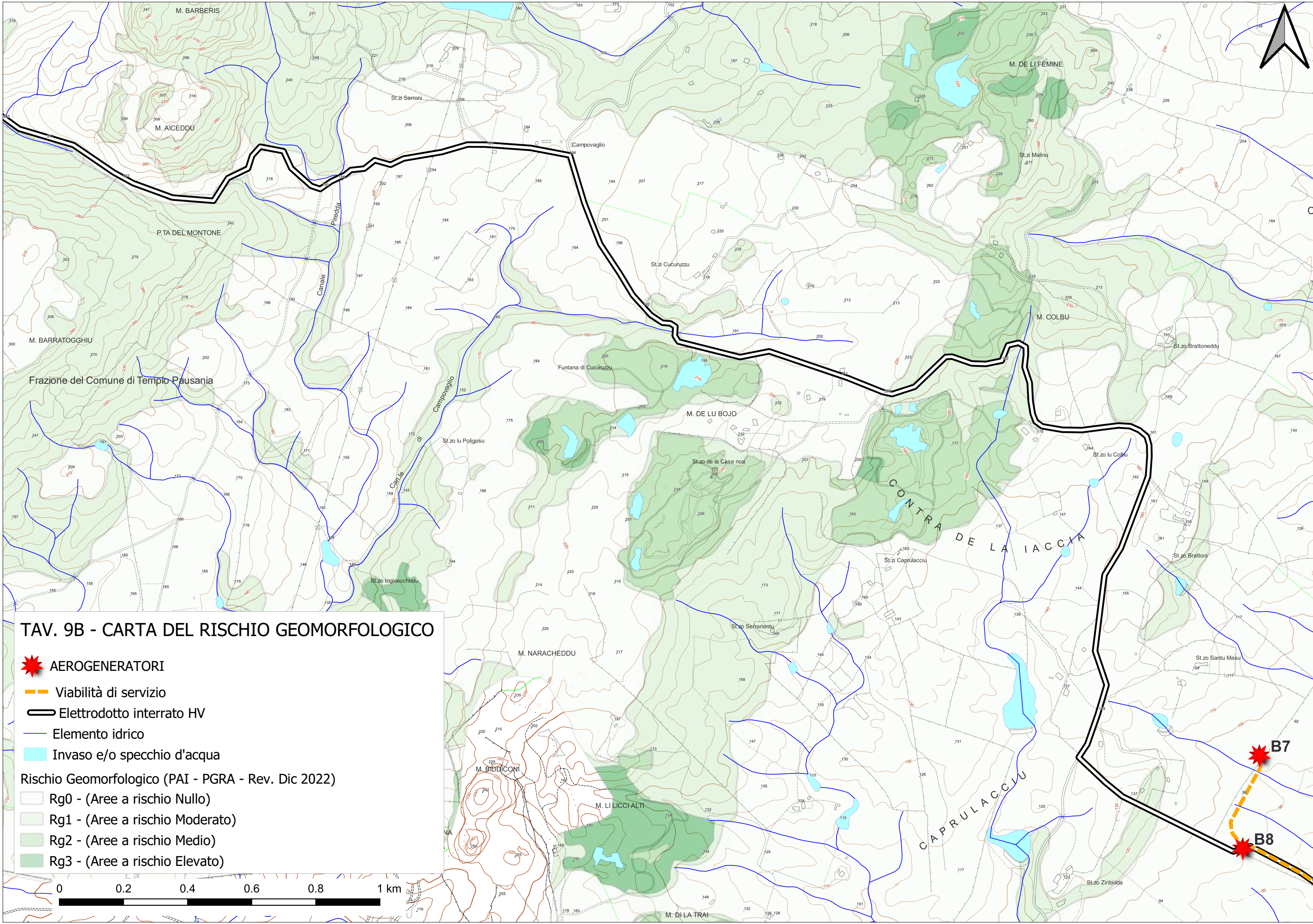
-  AEROGENERATORI
-  Viabilità esistente
-  Viabilità di servizio
-  Elettrodotto interrato HV
-  Elemento idrico
-  Specchio d'acqua e invaso

Rischio Geomorfologico (PAI - PGRA - Rev. Dic 2022)

-  Rg0 - (Aree a rischio Nullo)
-  Rg1 - (Aree a rischio Moderato)

0 0.2 0.4 0.6 0.8 1 km






### TAV. 9B - CARTA DEL RISCHIO GEOMORFOLOGICO

 AEROGENERATORI


 Viabilità di servizio


 Elettrodotto interrato HV


 Elemento idrico


 Invaso e/o specchio d'acqua

Rischio Geomorfologico (PAI - PGRA - Rev. Dic 2022)

 Rg0 - (Aree a rischio Nullo)

 Rg1 - (Aree a rischio Moderato)

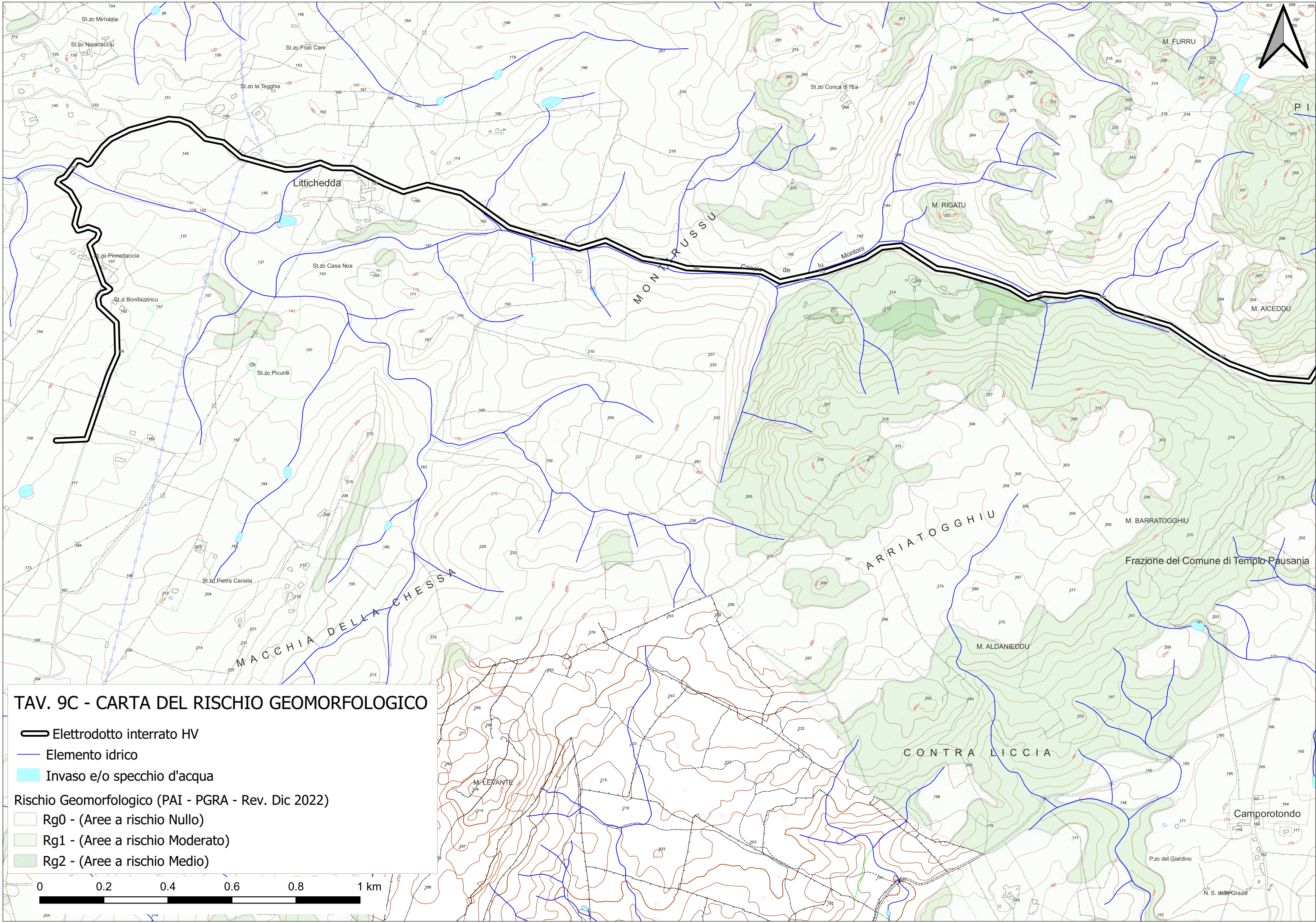
 Rg2 - (Aree a rischio Medio)

 Rg3 - (Aree a rischio Elevato)









 B7

 B8



### TAV. 9C - CARTA DEL RISCHIO GEOMORFOLOGICO

-  Elettrodotto interrato HV
-  Elemento idrico
-  Invaso e/o specchio d'acqua
- Rischio Geomorfologico (PAI - PGRA - Rev. Dic 2022)
-  Rg0 - (Aree a rischio Nullo)
-  Rg1 - (Aree a rischio Moderato)
-  Rg2 - (Aree a rischio Medio)

