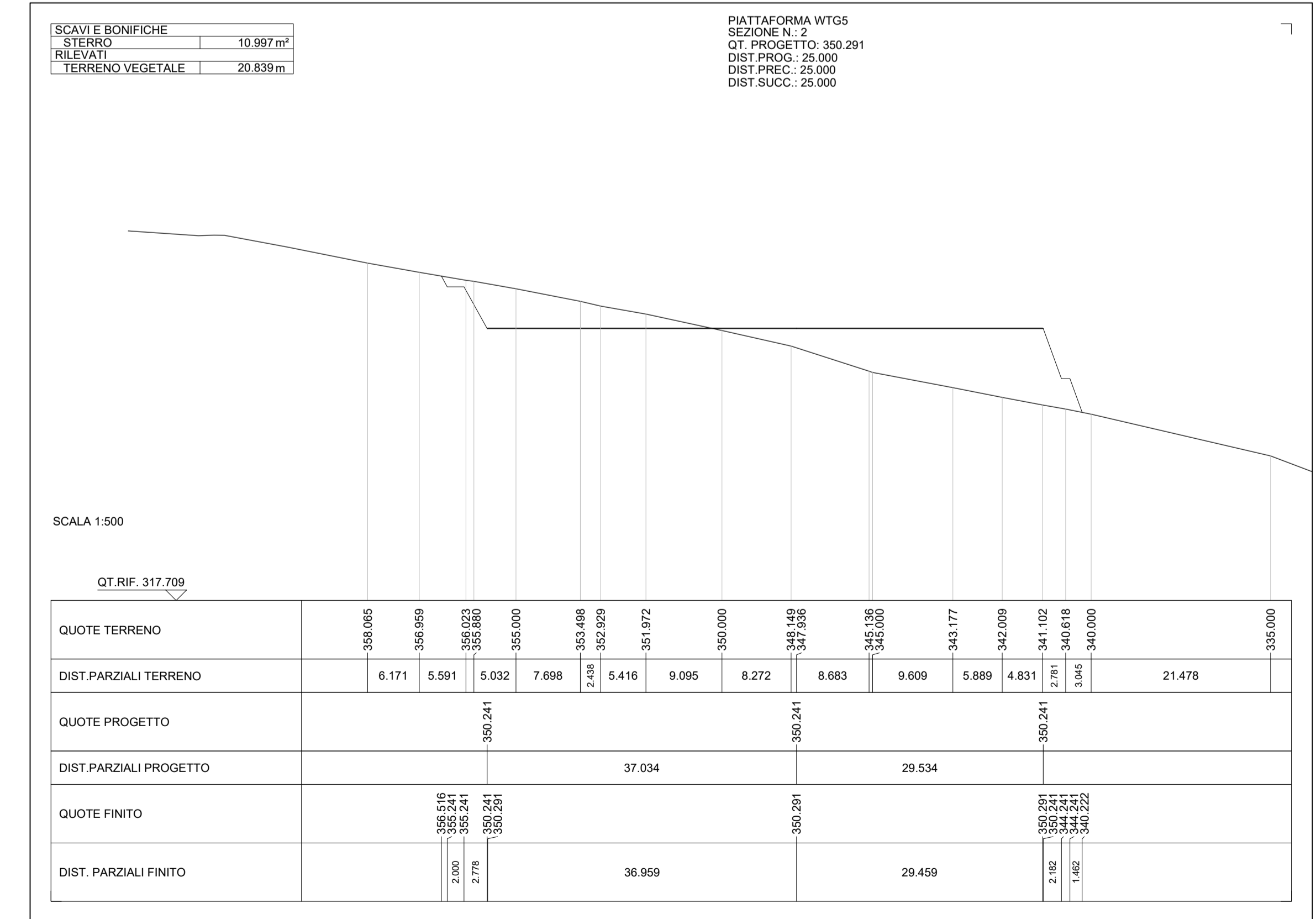
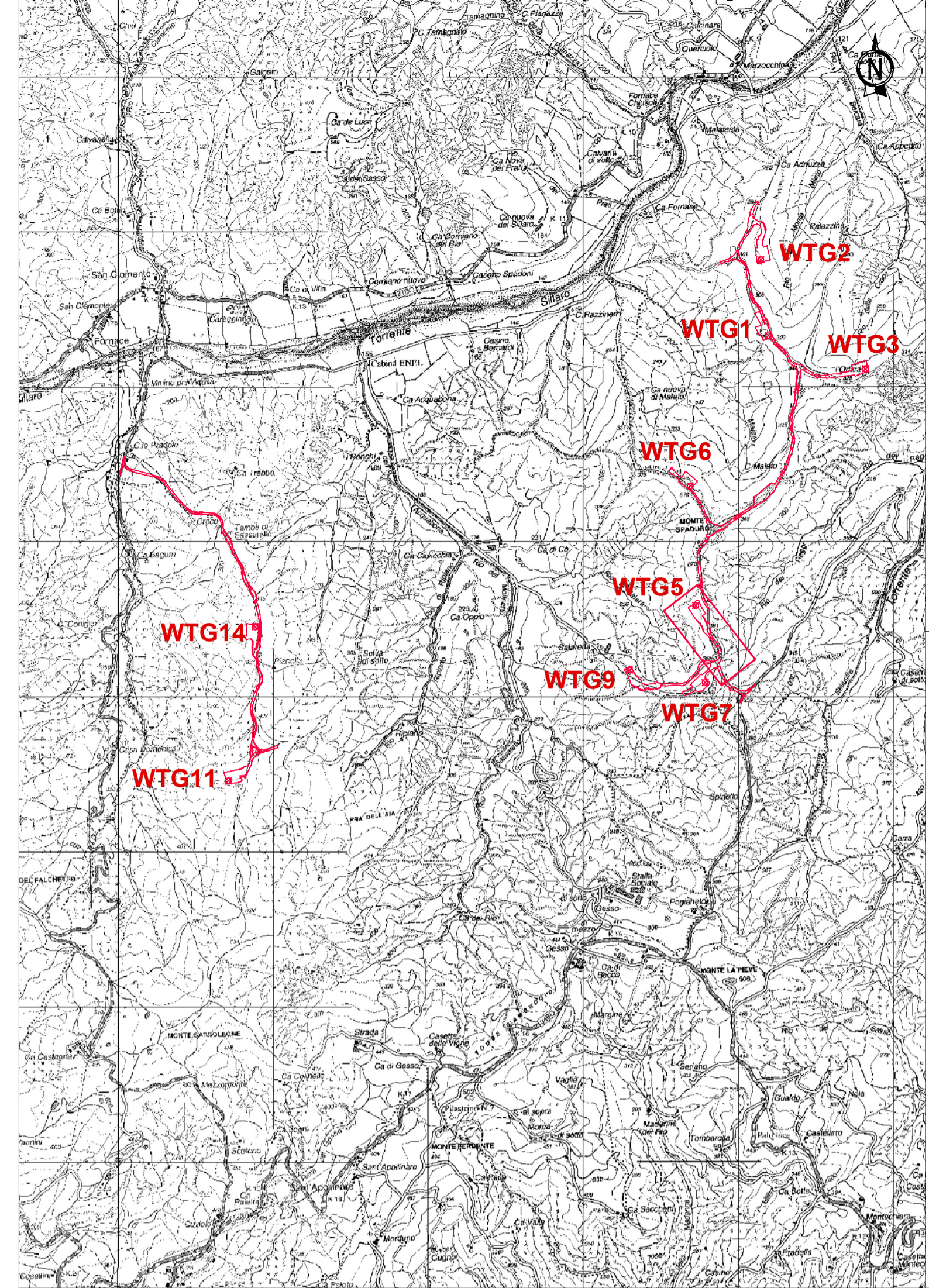
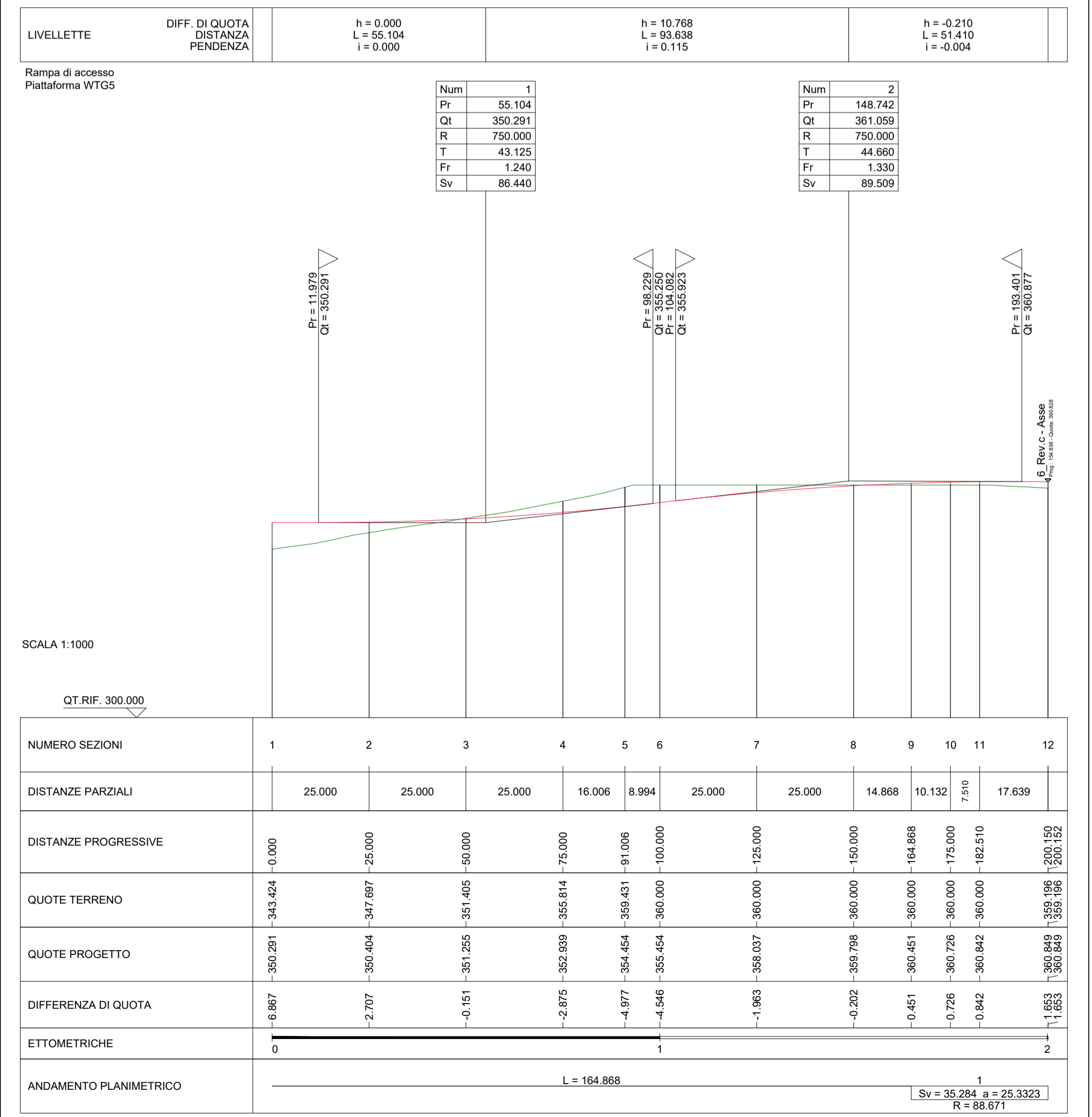




PLANIMETRIA SCALA 1:1000



PIATTAFORMA WTG5  
SEZIONE N. 2  
QT. PROGETTO: 350.291 m<sup>2</sup>  
DIST. PROG.: 25.000  
DIST. PREC.: 25.000  
DIST. SUCC.: 25.000



Committente:

**EMILIE Wind srl**  
Via Sardegna, 40  
00187 Roma (Rm), Italy

**IMPIANTO EOLICO "EMILIE"**  
**SITO IN CASALFIUMANESE (BO)**  
Plano-profilo viabilità di cantiere WTG 5 su ortofoto

Nome file	Commissa	Codice elaborato				
IT-VESEMI-PGR-CIV-DW-06_18.DWG	P22033	IT-VESEMI-PGR-CIV-DW-09				
		1/1				
		Pagina				
Luglio 2023	00	Prima Emissione	L. Pierfelice	D. Teta	S. Sguazzo	Varie
Data	Rev.	Descrizione	Elaborato	Verificato	Approvato	Scala

PROGER S.P.A.  
Operative Office  
Via Po, 99 - 66020 San Giovanni Teatino (CH), Italy  
T: +39.085.44.41.11 - F: +39.085.44.41.230 - proger.it

Certificata UNI EN ISO 9001:2015  
Certificata UNI EN ISO 14001:2015  
Certificata BS OHSAS18001:2007