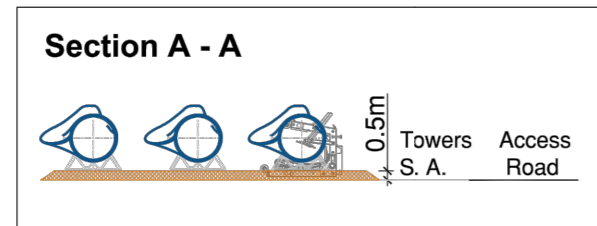
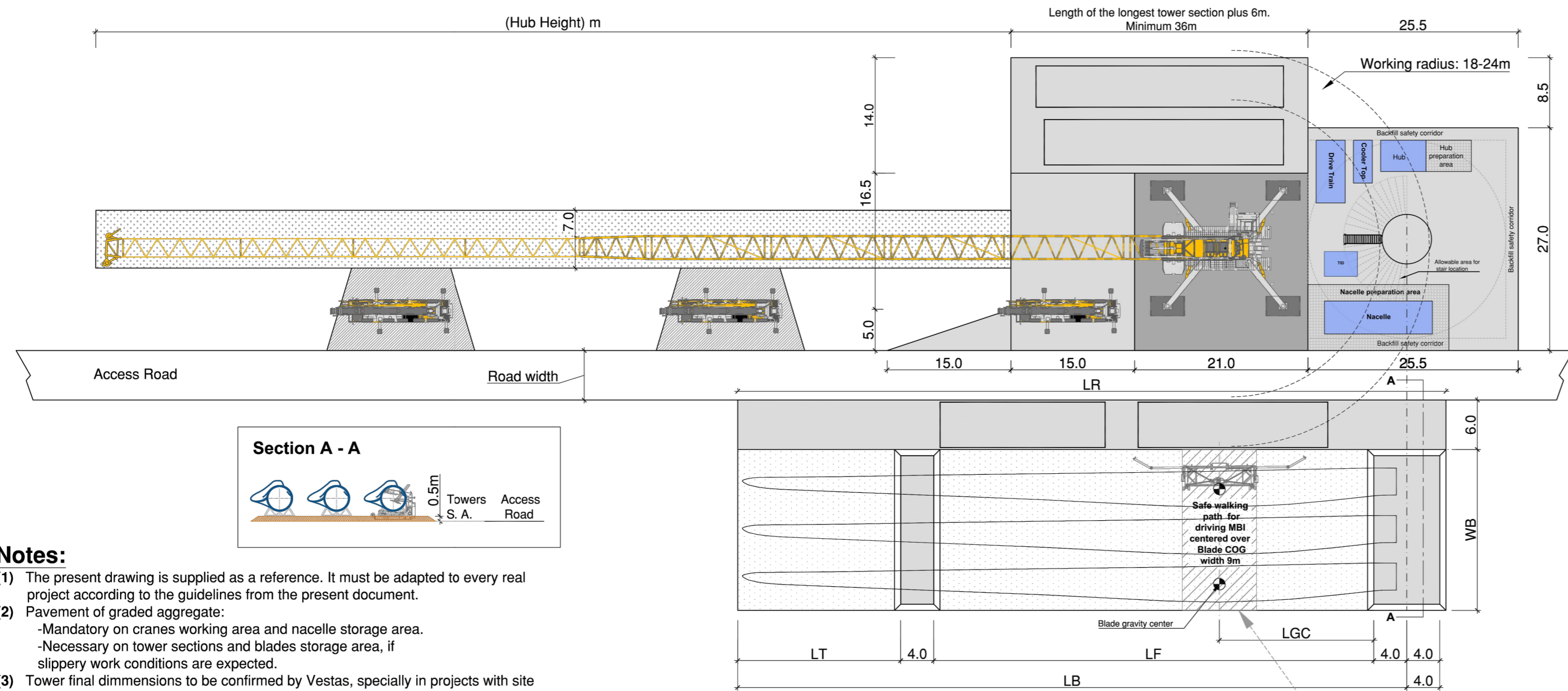


Storage area for 4 tower sections.

Applicable for the following tower configurations:

- 4 Sections tower.
- 5 Sections tower with T1 erected in advance.
- 6 Sections tower with T1 and T2 erected in advance.

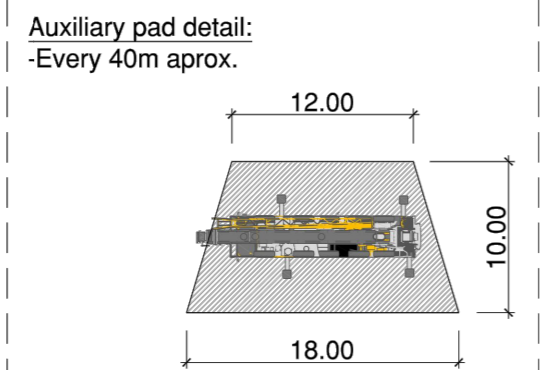


Notes:

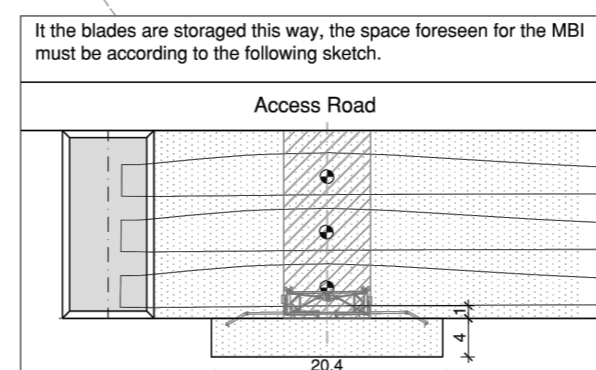
- (1) The present drawing is supplied as a reference. It must be adapted to every real project according to the guidelines from the present document.
- (2) Pavement of graded aggregate:
 - Mandatory on cranes working area and nacelle storage area.
 - Necessary on tower sections and blades storage area, if slippery work conditions are expected.
- (3) Tower final dimensions to be confirmed by Vestas, specially in projects with site specific towers.
- (4) Crane pad design has considered Liebherr LR 1600 2W (SL2D config.) as a reference for main crane.
- (5) All units are in meters

Legend:

- Bearing capacity: Crane pressure + safety factor
- Bearing capacity: Auxiliary Crane pressure + safety factor (Min.2 Kg/cm²)
- Bearing capacity: 2 Kg/cm²
- Area free of obstacles.



Blade storage area dimensions						
Rotor Ø	WB	LB	LF	LCG	LT	LR
V110	17.5 m	56.25 m	34.00 m	12.25 m	14.25 m	76.00 m
V112	17.5 m	56.92 m	30.74 m	10.56 m	18.18 m	76.00 m
V117	17.5 m	59.40 m	33.25 m	11.30 m	18.15 m	76.00 m
V120	17.5 m	61.05 m	39.26 m	13.58 m	13.79 m	76.00 m
V126	17.5 m	64.09 m	41.33 m	15.04 m	14.76 m	76.00 m
V136	17.5 m	68.90 m	44.65 m	14.50 m	16.25 m	76.00 m
V150	19.5 m	75.95 m	48.65 m	17.27 m	19.30 m	79.95 m
V163	19.5 m	82.32 m	52.07 m	17.27 m	22.25 m	86.32 m



Committente:

EMILIE Wind srl
Via Sardegna, 40
00187 Roma (Rm), Italy

IMPIANTO EOLICO "EMILIE"
SITO IN CASALFIUMANESE (BO)

Piazzola montaggio con posizione componenti e Gru

Questo elaborato è di proprietà della Proger S.p.A. pertanto non può essere riprodotto né integralmente, né in parte senza l'autorizzazione scritta della stessa. Da non utilizzare per scopi diversi da quelli per cui è stato fornito.		Nome file IT-VESEMI-PGR-CIV-DW-19.DWG	Commessa P22033	Codice elaborato IT-VESEMI-PGR-CIV-DW-19	
				1/1	
				Pagina	
Luglio 2023	00	Prima Emissione	L. Pierfelice	D. Teta	S. Sguazzo
Data	Rev.	Descrizione	Elaborato	Verificato	Approvato
			Scala 1:500		

PROGER

Certificata UNI EN ISO 9001:2015
Certificata UNI EN ISO 14001:2015
Certificata BS OHSAS18001:2007

PROGER S.P.A.
Operative Office
Via Po', 99 - 66020 San Giovanni Teatino (CH), Italy
T: +39.085.44.41.1 - F: +39.085.44.41.230 - proger.it