

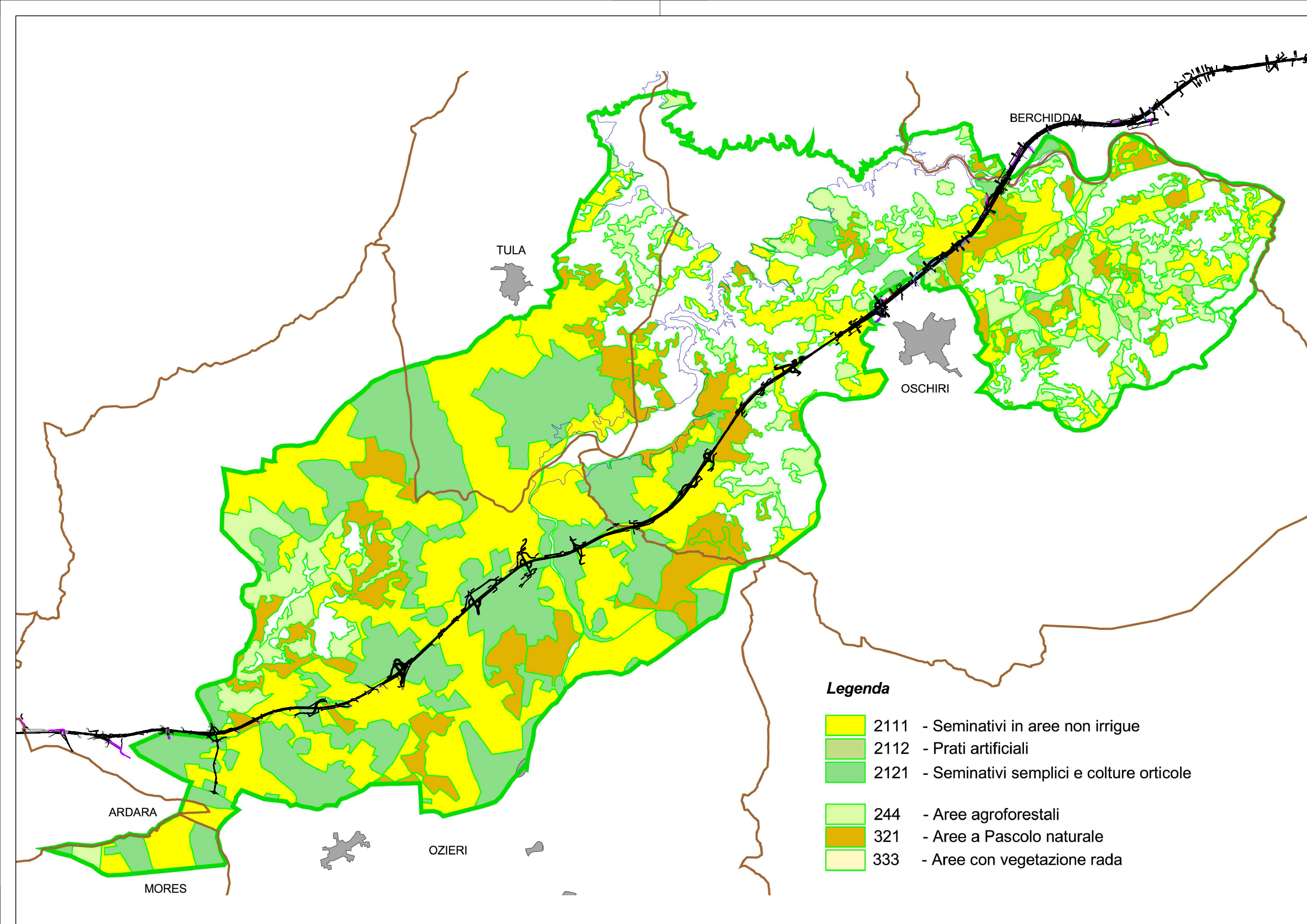


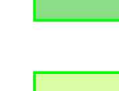
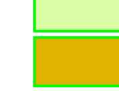




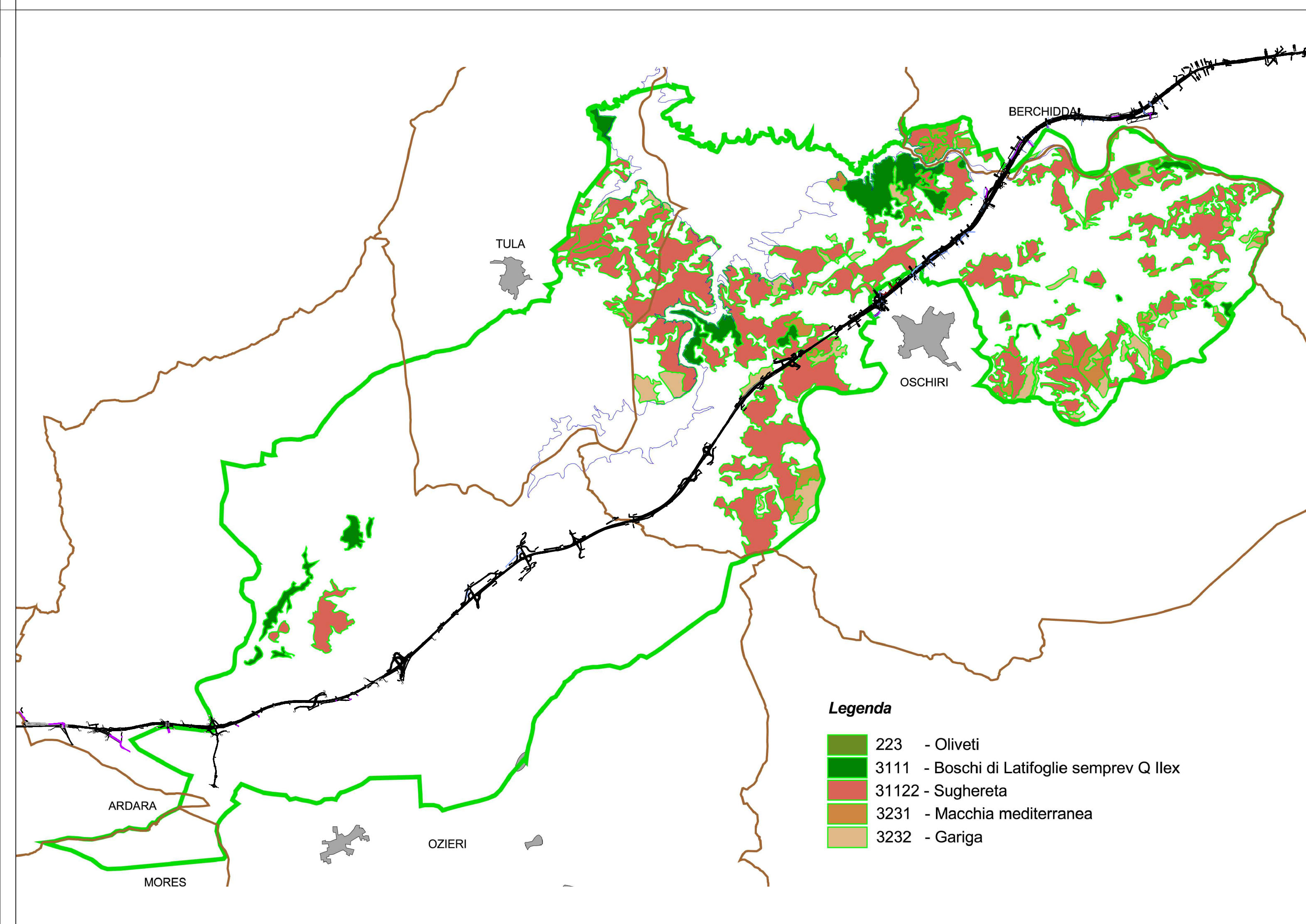
LEGENDA

-  Tracciato Progetto Esecutivo
-  Opere in variante



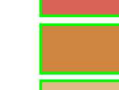




Legenda

-  2111 - Seminativi in aree non irrigue
-  2112 - Prati artificiali
-  2121 - Seminativi semplici e colture orticole
-  244 - Aree agroforestali
-  321 - Aree a Pascolo naturale
-  333 - Aree con vegetazione rada



Legenda

-  223 - Oliveti
-  3111 - Boschi di Latifoglie semprev Q Ilex
-  31122 - Sughereta
-  3231 - Macchia mediterranea
-  3232 - Gariga



O.P.C.M. n. 3869 del 23/04/2010. Disposizioni urgenti di protezione civile per fronteggiare l'emergenza determinatasi nel settore del traffico e della mobilità nelle province di Sassari ed Olbia- Tempio, in relazione alla strada statale Sassari - Olbia

SOGGETTO ATTUATORE ANAS S.p.A.

**ADEGUAMENTO AL TIPO B (4 CORSIE) DELL'ITINERARIO SASSARI-OLBIA
REITERAZIONE DEL PROCEDIMENTO DI VIA LOTTI DA 0 A 9**


PROGETTO ESECUTIVO

IMPRESA

TITOLO ELABORATO
5 - QUADRO DI RIFERIMENTO AMBIENTALE
5.5 - Quadro di riferimento ambientale: Flora e fauna
5.5.4 - Carta della vegetazione e della flora in area SIC
Tav. 5

CODICE PROGETTO				CODICE ELABORATO																		
D	P	C	A	0	3	E	2	T	0	0	I	A	1	4	A	M	B	C	T	0	5	A

COMMESSA: A038	DATA: 12/2021	SCALA: 1:75.000	NOME FILE: T00IA14AMBCT05_A.dwg
----------------	---------------	-----------------	---------------------------------

IL PROGETTISTA  ING. ALESSANDRO TANCA	IL RESPONSABILE DEL PROCEDIMENTO per il Lotto 4 ING. FRANCESCO CORRIAS	IL RESPONSABILE DEL PROCEDIMENTO per i Lotti 0,1,2,3,5,6,7,8,9 ING. FRANCESCO RUGGIERI
--	---	---

REV.	DATA	DESCRIZIONE	REDATTO	VERIFICATO	APPROVATO
A	12/2021	Emissione per consegna	M. L. Massa	A. Tanca	A. Tanca