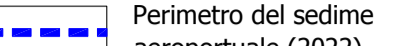












--- Confini comunali

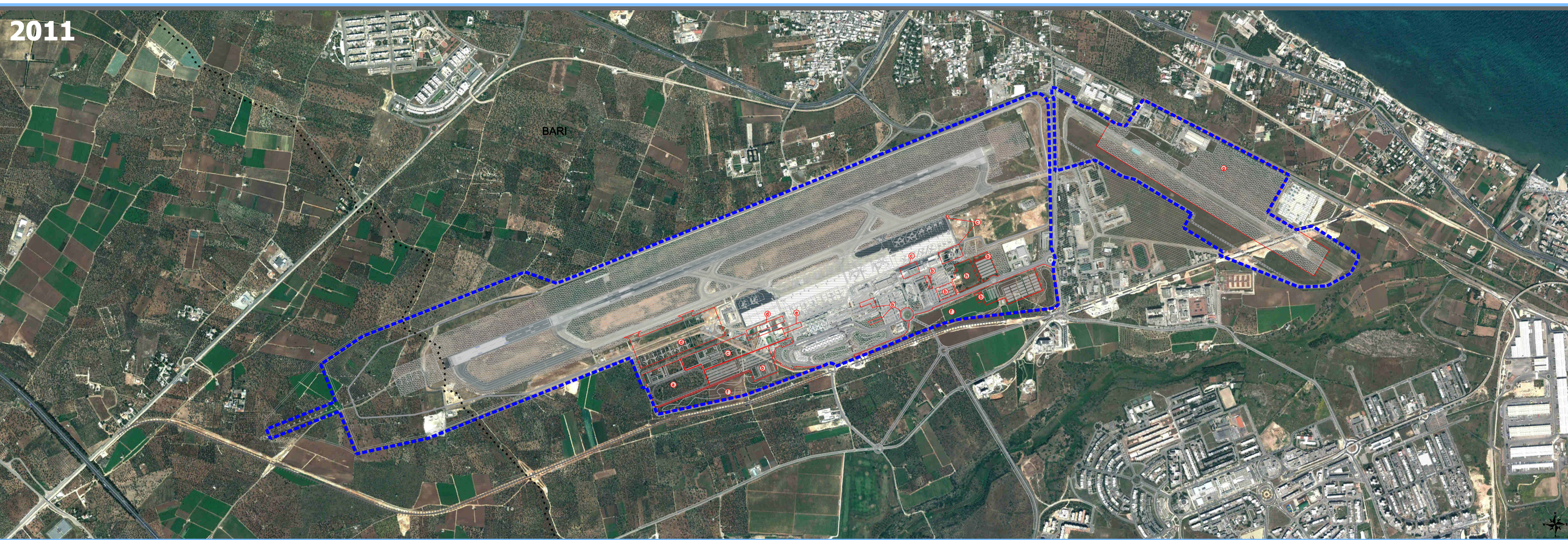
Interventi previsti dal Master Plan 2022 dell'Aeroporto di Bari

-  Perimetro del sedime aeroportuale (2022)
-  Edifici esistenti
-  Area militare

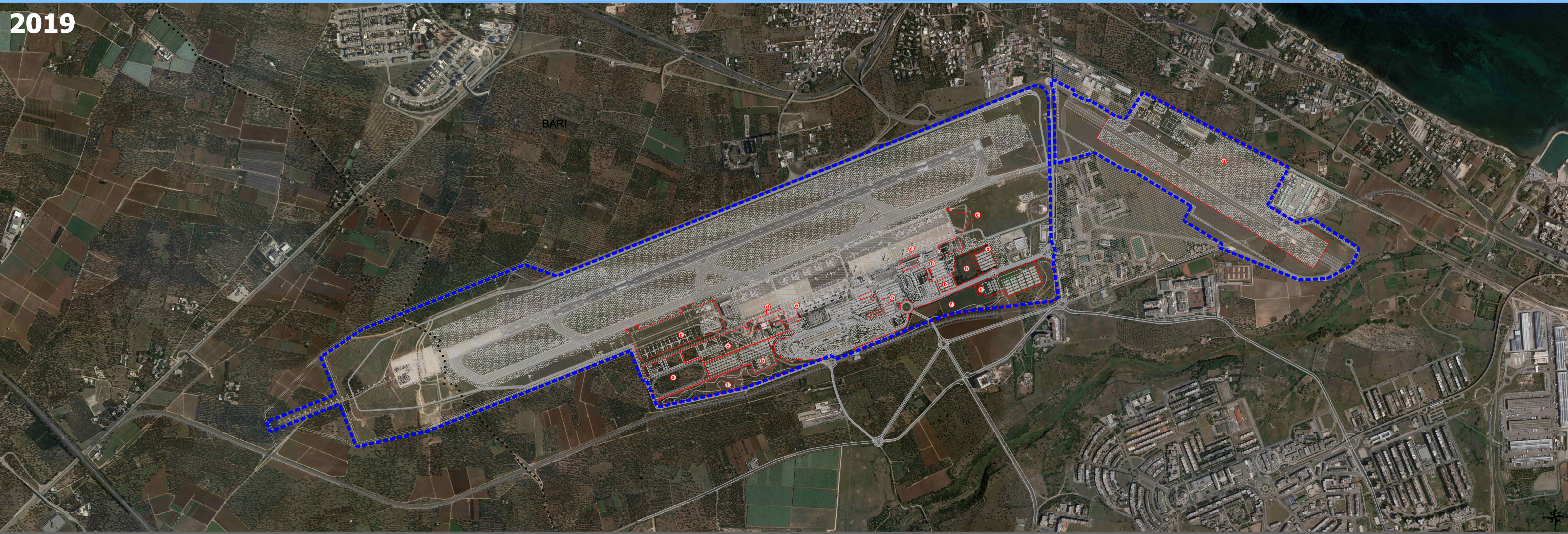
Schematizzazione dei principali interventi a carattere infrastrutturale

-  Realizzazione nuova area merci
-  Parcheggi lunga sosta e strutture complementari
-  Hangar e deposito carburanti
-  Piazzola sosta aeromobili e mezzi rampa
-  Ampliamento aerostazione passeggeri
-  Fascia filtro a verde
-  Riordino ex area militare
-  Complesso produttivo

2011



2019



AEROPORTO DI BARI "KAROL WOJTYLA"
Master Plan Aeroportuale 2022

**Richiesta di proroga termini di validità
del decreto di compatibilità ambientale
del DM 277 del 19/11/2014**

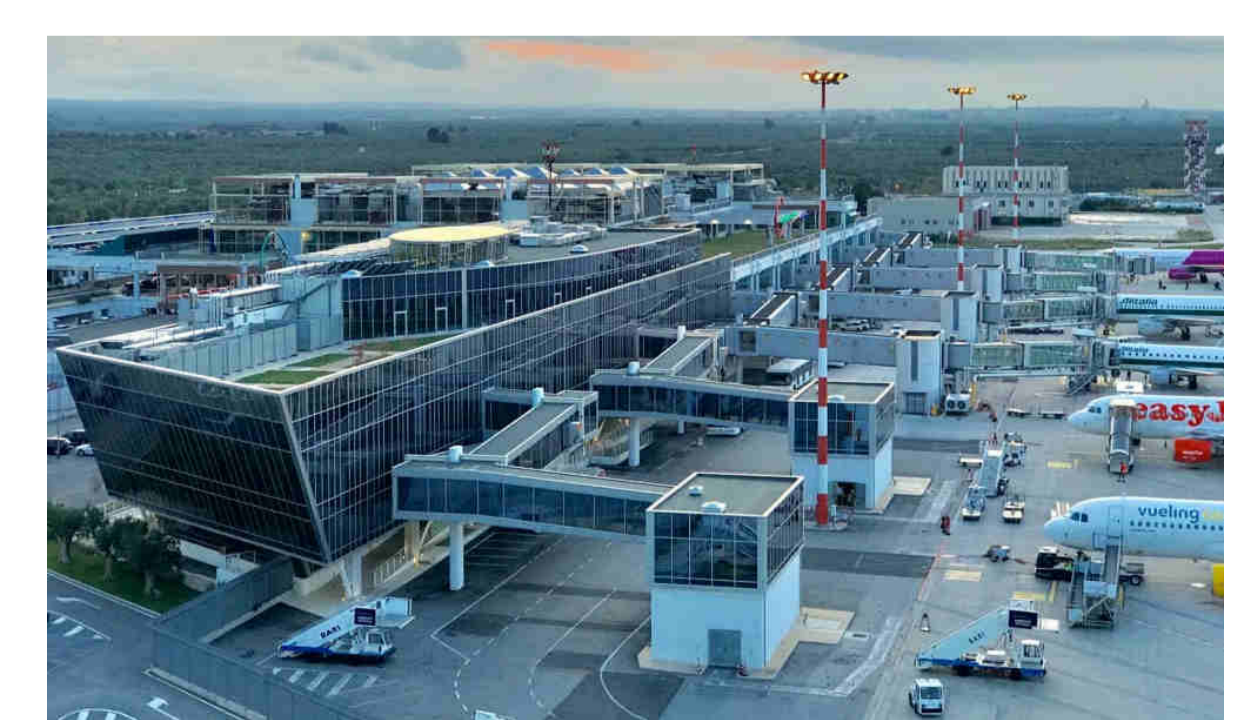


Foto aerea di confronto 2011-2019
Data: Novembre 2019

TAV.02
Scala 1:10.000