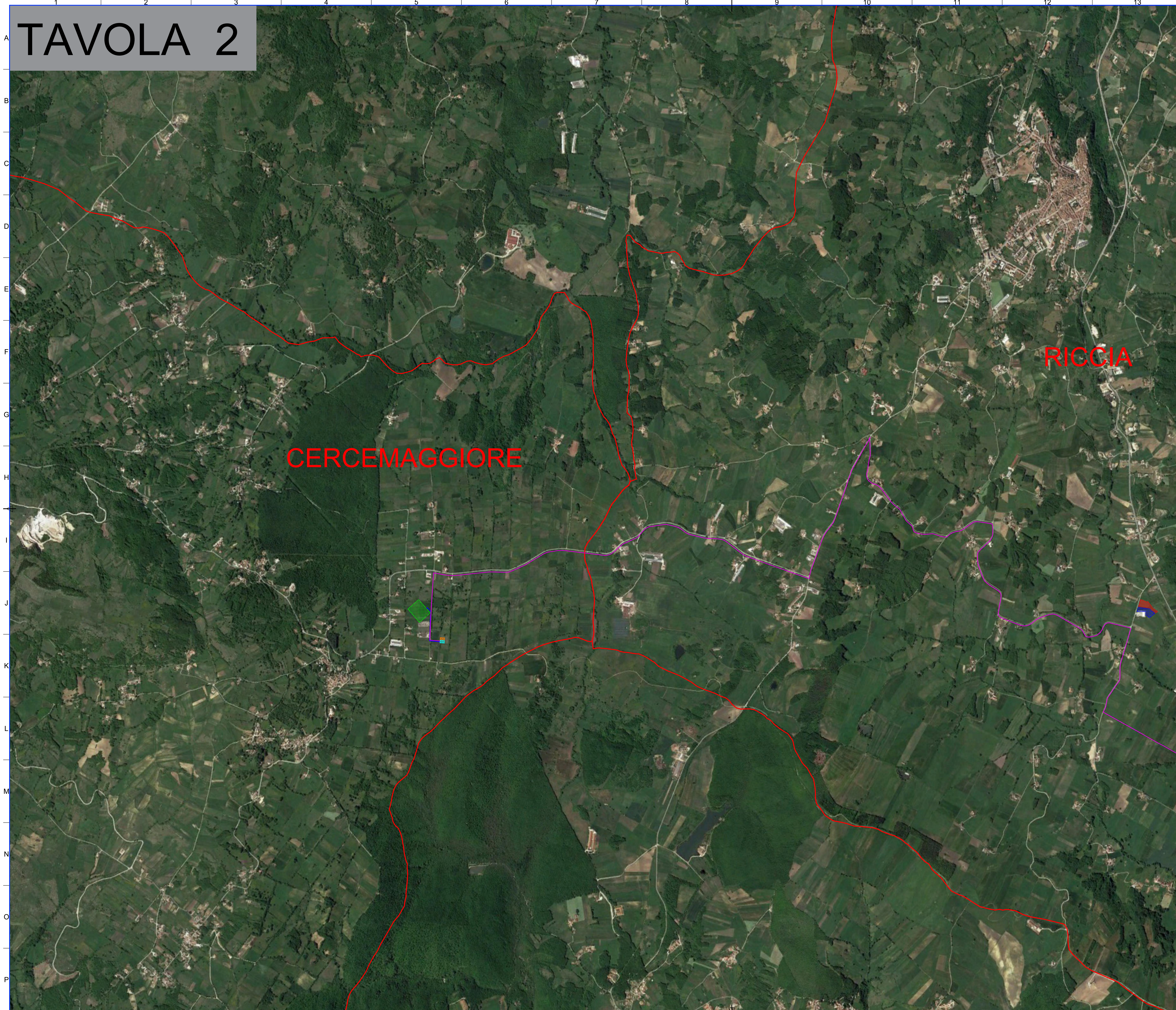
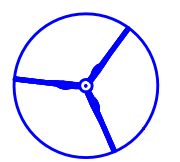



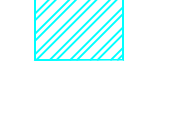
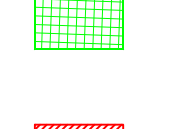

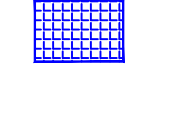

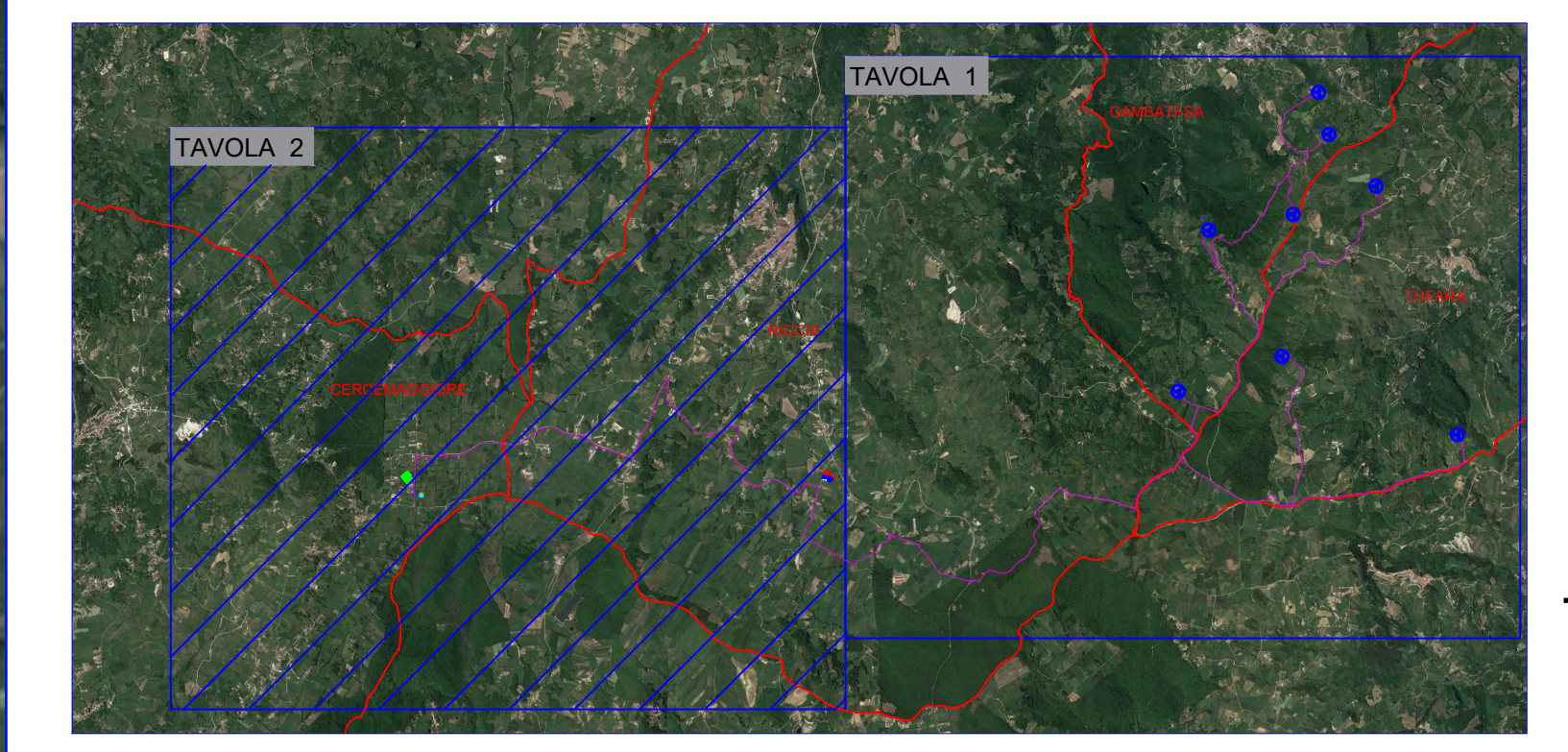


TAVOLA 2



- LEGENDA:**
-  AEROGENERATORI DI PROGETTO
 -  CAVIDOTTO AT 36 kV PER IL COLLEGAMENTO DEI VARI AEROGENERATORI
 -  CAVIDOTTO AT 36 kV Cabina 36 kV di utenza - SE RTN 150/36 kV
 -  CABINA 36 kV DI UTENZA "PARCO EOLICO RICCIA"
 -  AMPLIAMENTO CABINA 36 kV DI UTENZA "PARCO EOLICO RICCIA"
 -  NUOVA SE RTN 150/36 kV RICCIA
 -  AREA CANTIERE
 -  AREA STOCCAGGIO MATERIALI
 -  CONFINE COMUNALE



 		   			
Comittente: 		RWE RENEWABLES ITALIA S.R.L. Via Andrea Doria, 41/02 - 20132 Roma P.IVA/C.F. 0640370968 PEC: renewables@rwi.rwi.it			
Titolo del Progetto: REALIZZAZIONE DI UN IMPIANTO PER LA PRODUZIONE DI ENERGIA ELETTRICA DA FONTE EOLICA NEI COMUNI DI GAMBATESA (CB), TUFFARA (CB), RICCIA (CB) E CERCEMAGGIORE (CB).					
Documento: PROGETTO DEFINITIVO OPERE CIVILI		N° Documento: PEPI D EG 77.b			
ID PROGETTO:	PEPI	DISCIPLINA:	PD	TIPOLOGIA:	D
Elaborato: Inquadramento territoriale su ortofoto					
FOGLIO: 1 di 1		SCALA: 1:10.000		Nome file: PEPI_D_EG_77_b_inquadramento territoriale su ortofoto	
Progettazione:		Progettista:			
					
ENERGY & ENGINEERING S.R.L. Via XII Luglio 136 20044 - Busca (PV) P.IVA/C.F. 0218800047 Tel. Fax: 022161480 pec: energyengineering@egpmail.it		Ing. Davide G. Trivelli			
Rev.	Data	Revisione	Descrizione	Revisione	Prodotto
0	02/12/2023	PRIMA EMISSIONE			ENERGY & ENGINEERING S.R.L.
					ENERGY & ENGINEERING S.R.L.
					ENERGY & ENGINEERING S.R.L.