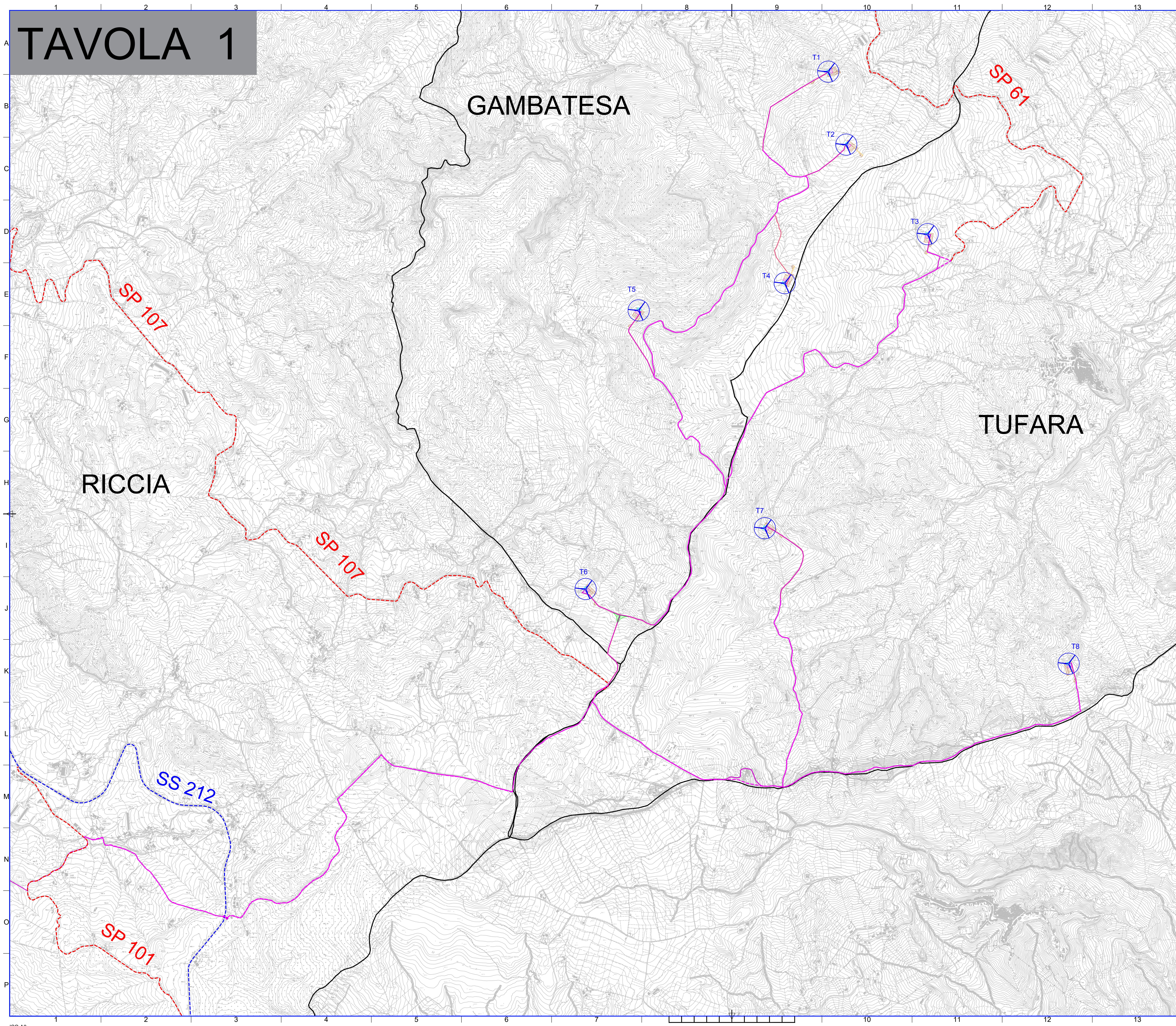
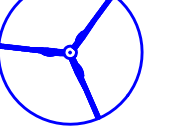




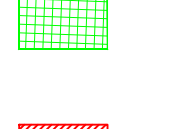











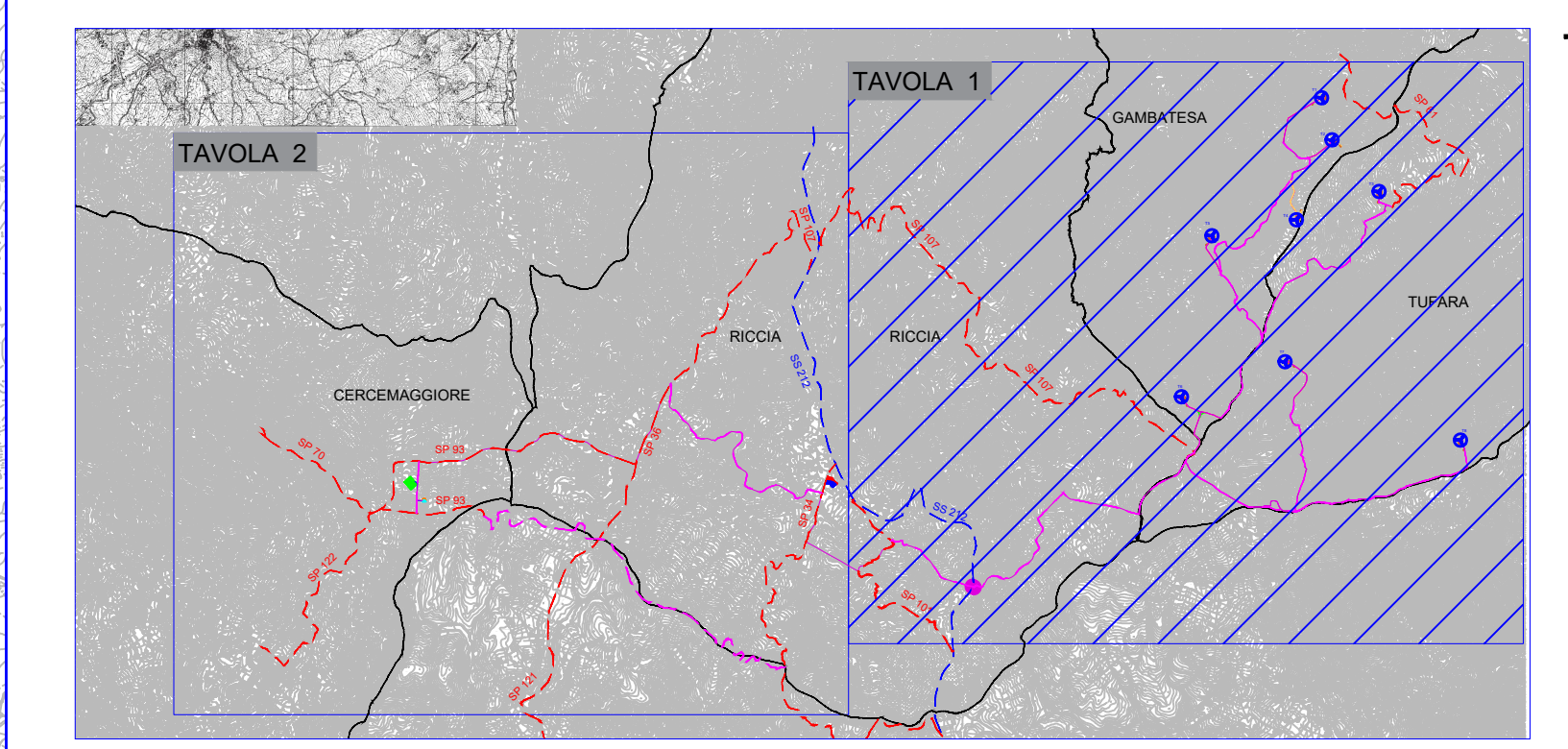


TAVOLA 1



LEGENDA:

-  AEROGENERATORI DI PROGETTO
-  CAVIDOTTO AT 36 kV PER IL COLLEGAMENTO DEI VARI AEROGENERATORI
-  CAVIDOTTO AT 36 kV Cabina 36 kV di utenza - SE RTN 150/36 kV
-  CABINA 36 kV DI UTENZA "PARCO EOLICO RICCIA"
-  AMPLIAMENTO CABINA 36 kV DI UTENZA "PARCO EOLICO RICCIA"
-  NUOVA SE RTN 150/36 kV RICCIA
-  AREA CANTIERE
-  AREA STOCCAGGIO MATERIALI
-  CONFINE COMUNALE
-  PIAZZOLA DI ESERCIZIO
-  FASCIA ASSERVIMENTO PER ACCESSO E PASSAGGIO
-  SUPERFICIE DI OCCUPAZIONE TEMPORANEA
-  STRADA STATALE
-  STRADA PROVINCIALE
-  STRADA COMUNALE
-  VIABILITA' DI ESERCIZIO DA REALIZZARE
-  ALLARGAMENTI TEMPORANEI VIABILITA'



Comitente: RWE RENEWABLES ITALIA S.R.L. <small>Via Andrea Doria, 41/C - 00185 Roma P. IVA/C.F. 06400370688 PEC: renewablesitaly@rwe.com</small>		Titolo del Progetto: REALIZZAZIONE DI UN IMPIANTO PER LA PRODUZIONE DI ENERGIA ELETTRICA DA FONTE EOLICA NEI COMUNI DI GAMBATESA (GR), TUFARA (GR), RICCIA (GR) E CERCEMAGGIORE (GR).																		
Documento: PROGETTO DEFINITIVO OPERE CIVILI		N° Documento: PEPI D EC 126.a																		
ID PROGETTO: PEPI		DISCIPLINA: PD		TIPOLOGIA: D																
Elaborato: Planimetria piano di cantierizzazione - QUADRO D'UNIONE		Formato: A0																		
Foglio: 1 di 1		Scala: 1:10.000		Nome file: PEPI D EC 126.a - Planimetria piano di cantierizzazione - QUADRO D'UNIONE																
																				
ENERGY & ENGINEERING S.R.L. <small>Via XIII Luglio 130 03044 - Bassano del Grappa (VI) P.IVA/C.F. 0308000047 Tel. Fax: 042391480 pec: energyengineering@energy.it</small>		Ing. Davide G. Trivelli																		
<table border="1" style="width: 100%; border-collapse: collapse;"> <thead> <tr> <th>Rev.</th> <th>Data</th> <th>Revisione</th> <th>Descrizione Revisione</th> <th>Redatto</th> <th>Controllato</th> <th>Approvato</th> </tr> </thead> <tbody> <tr> <td>0</td> <td>03/07/2023</td> <td>PRIMA EMISSIONE</td> <td></td> <td>ENERGY & ENGINEERING S.R.L.</td> <td>ENERGY & ENGINEERING S.R.L.</td> <td>ENERGY & ENGINEERING S.R.L.</td> </tr> </tbody> </table>	Rev.	Data	Revisione	Descrizione Revisione	Redatto	Controllato	Approvato	0	03/07/2023	PRIMA EMISSIONE		ENERGY & ENGINEERING S.R.L.	ENERGY & ENGINEERING S.R.L.	ENERGY & ENGINEERING S.R.L.						
Rev.	Data	Revisione	Descrizione Revisione	Redatto	Controllato	Approvato														
0	03/07/2023	PRIMA EMISSIONE		ENERGY & ENGINEERING S.R.L.	ENERGY & ENGINEERING S.R.L.	ENERGY & ENGINEERING S.R.L.														