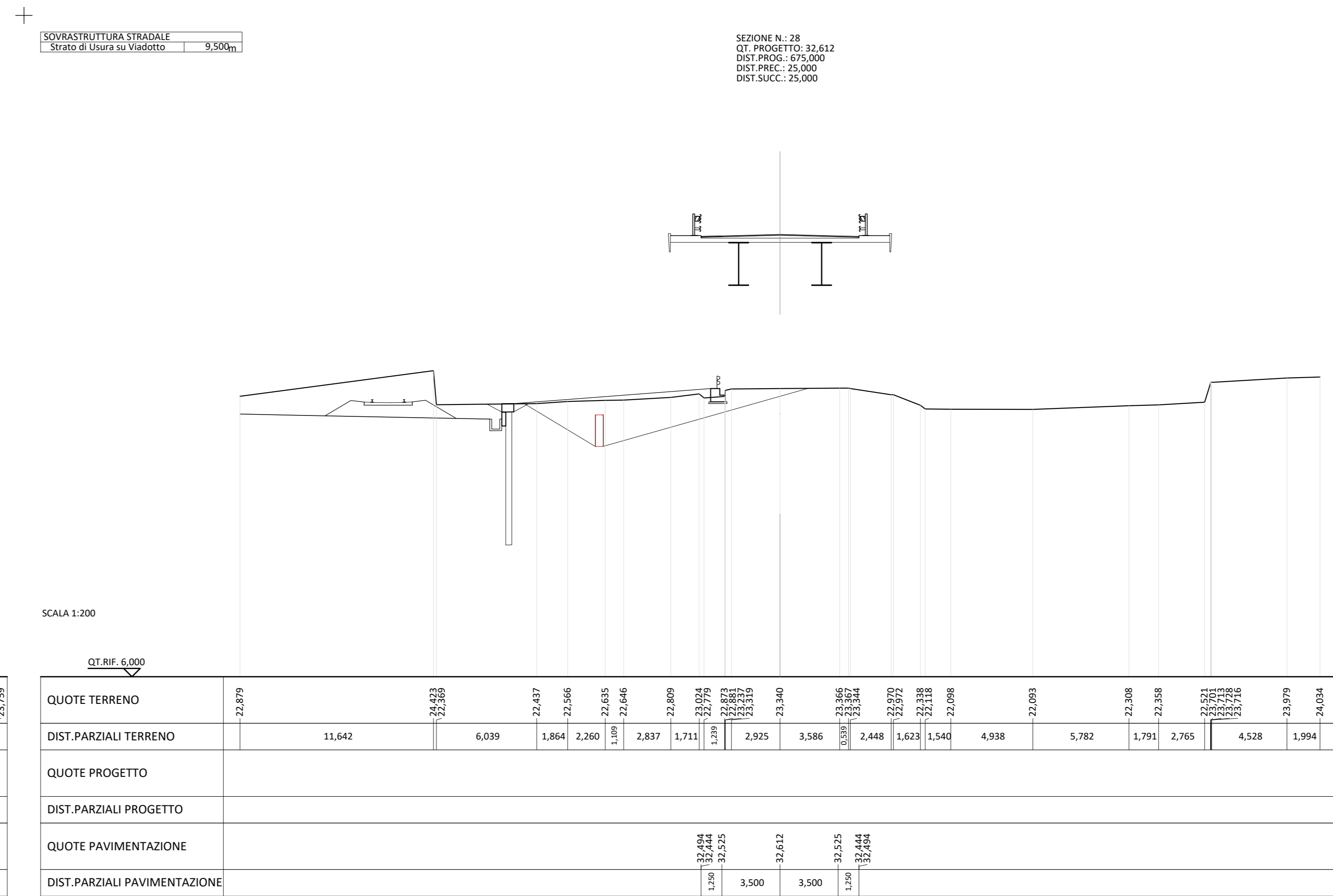
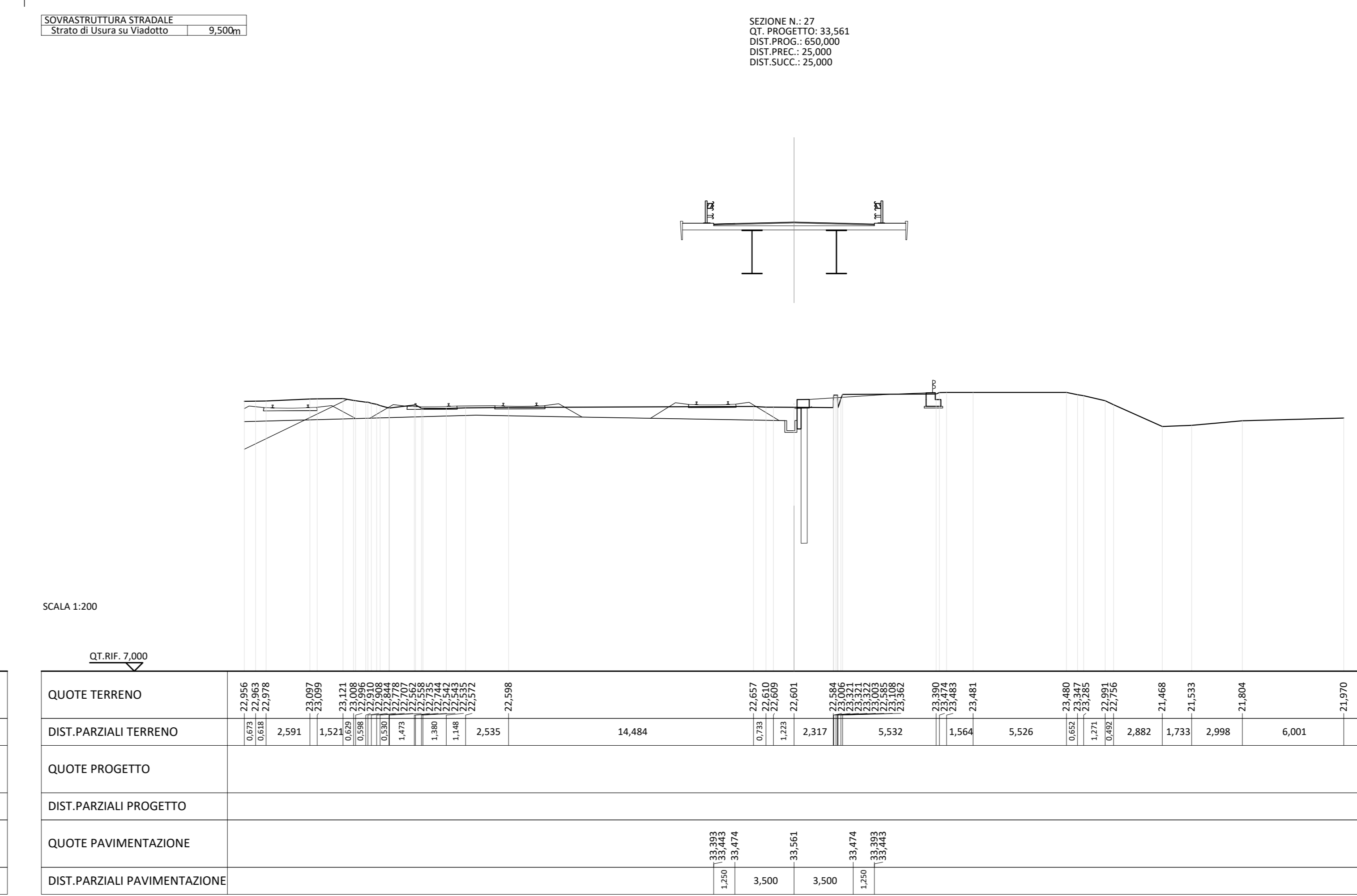
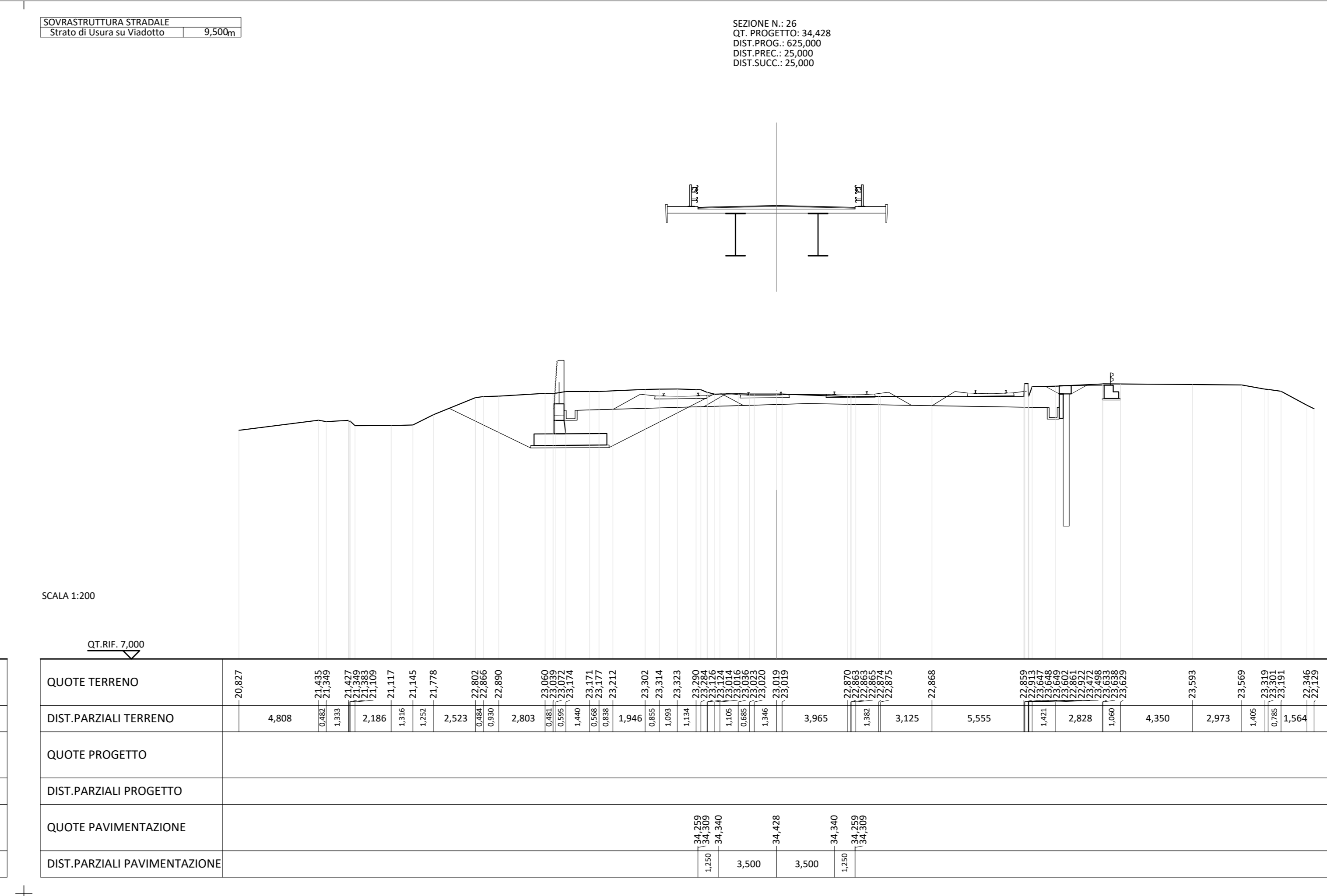
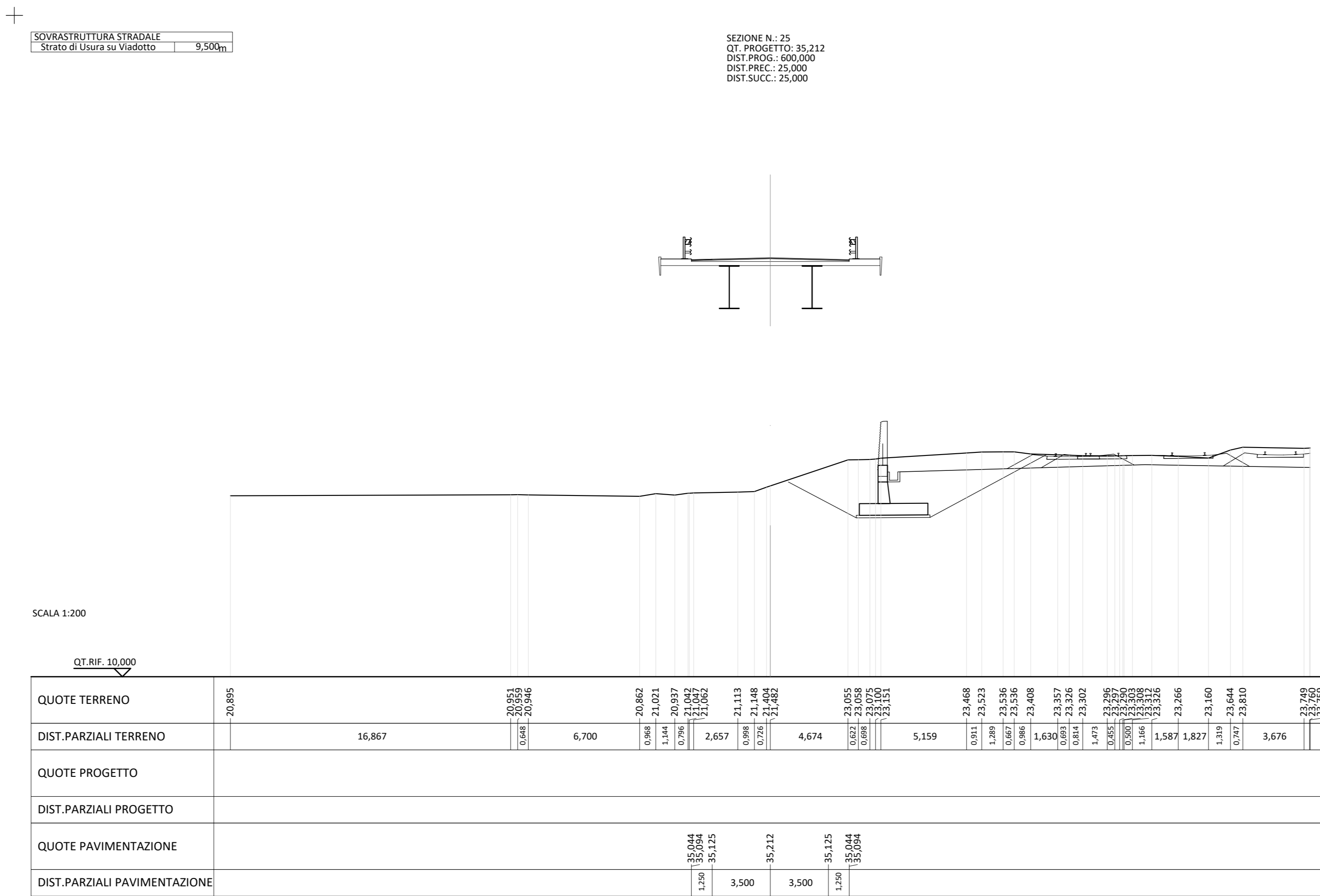
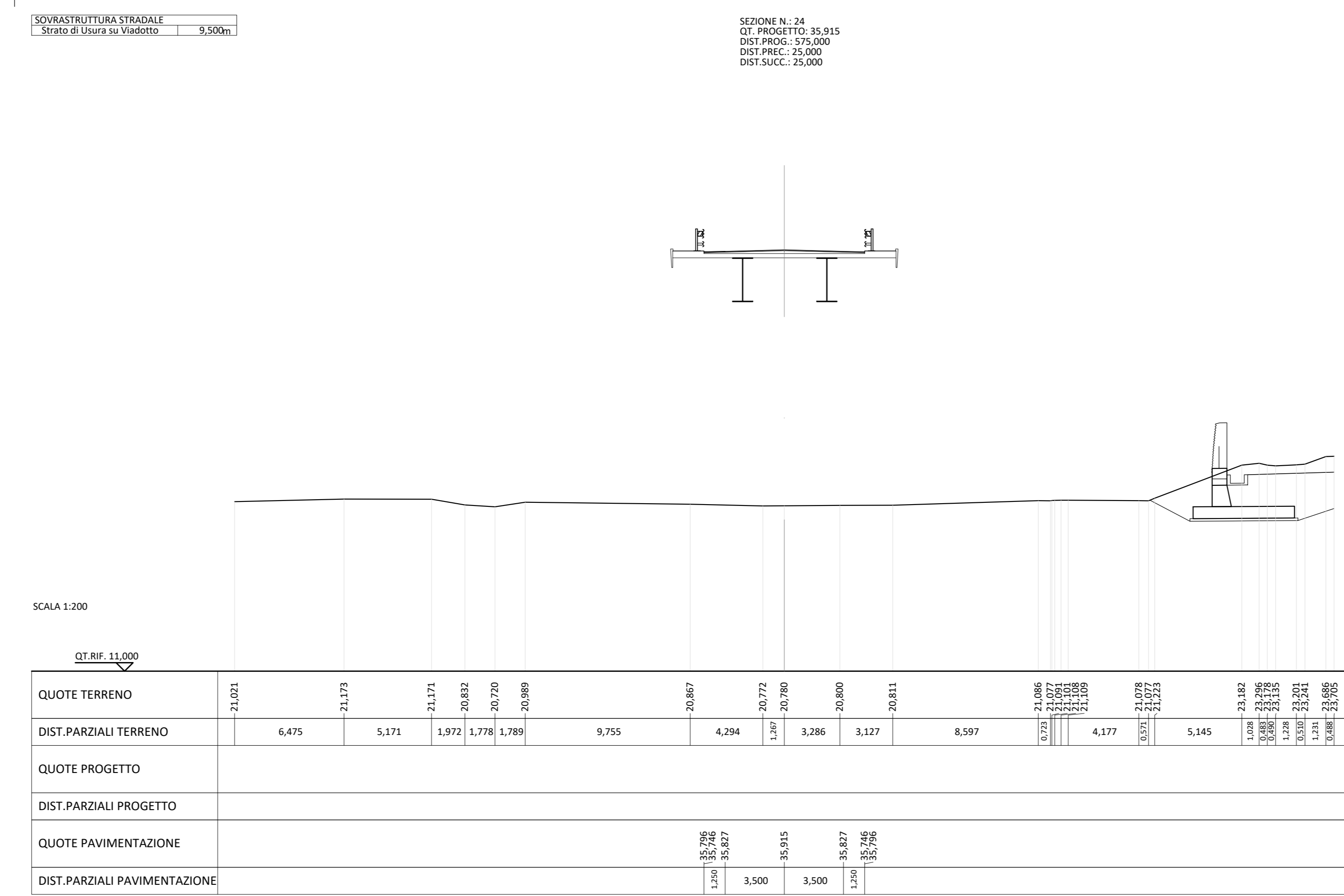
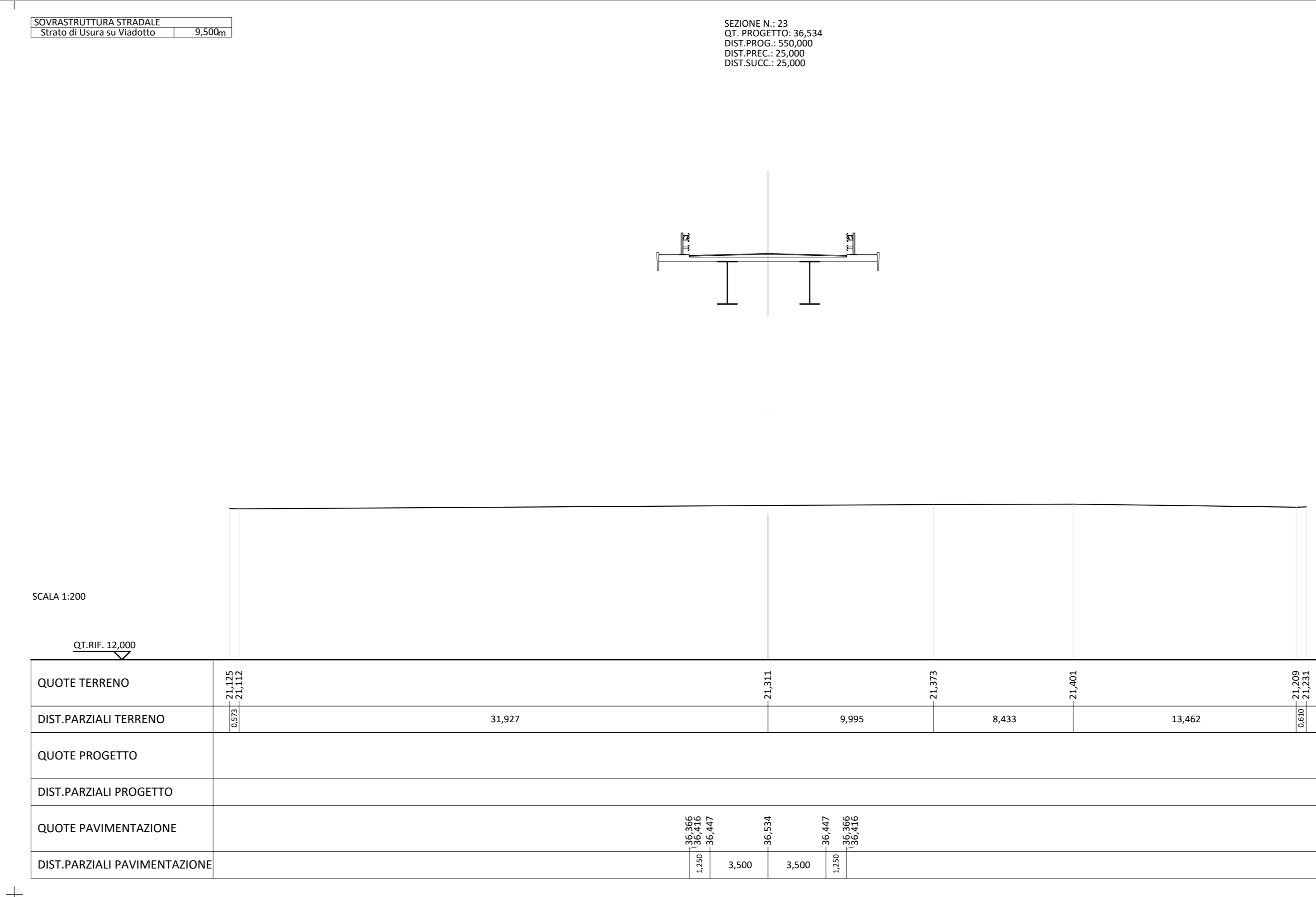
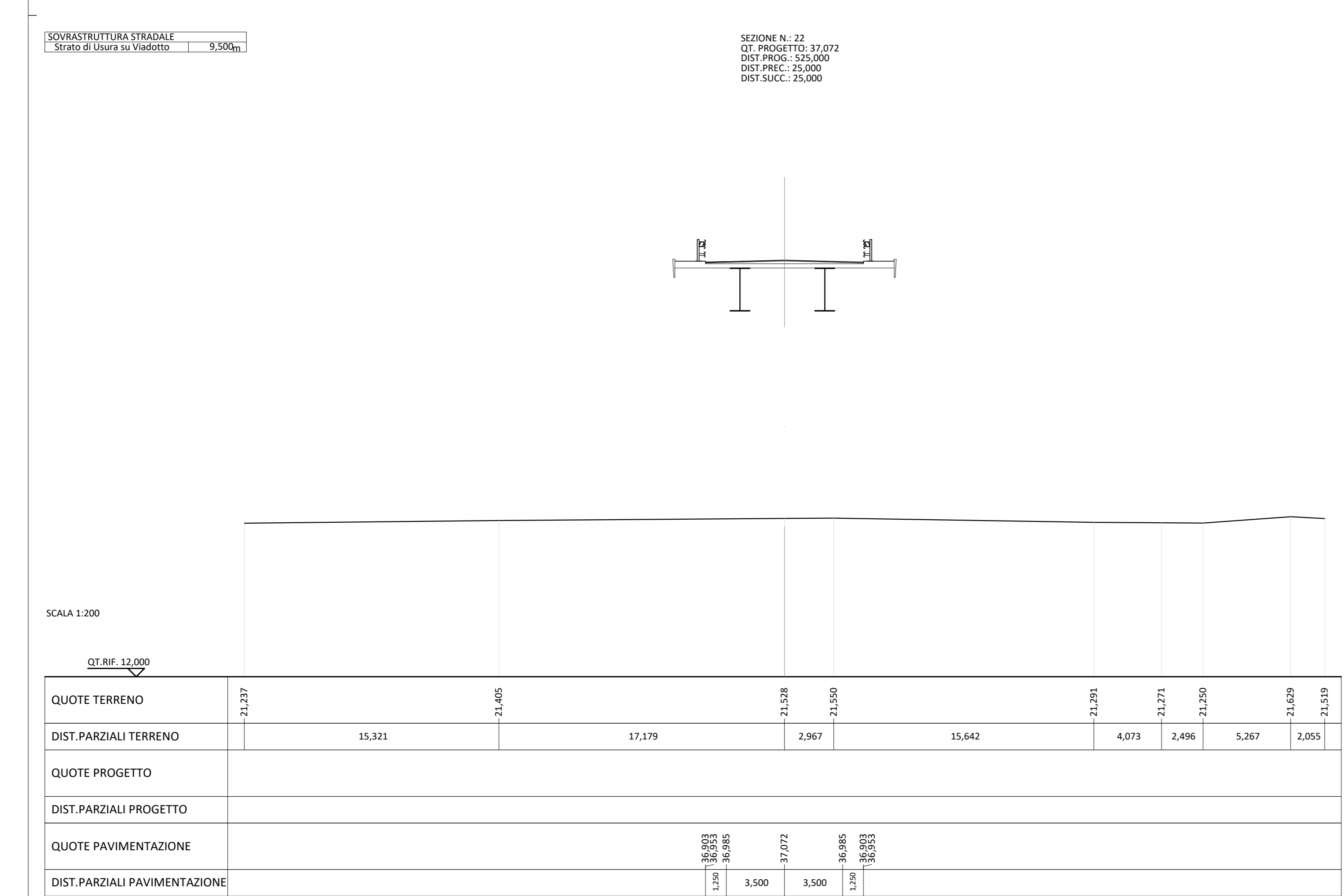
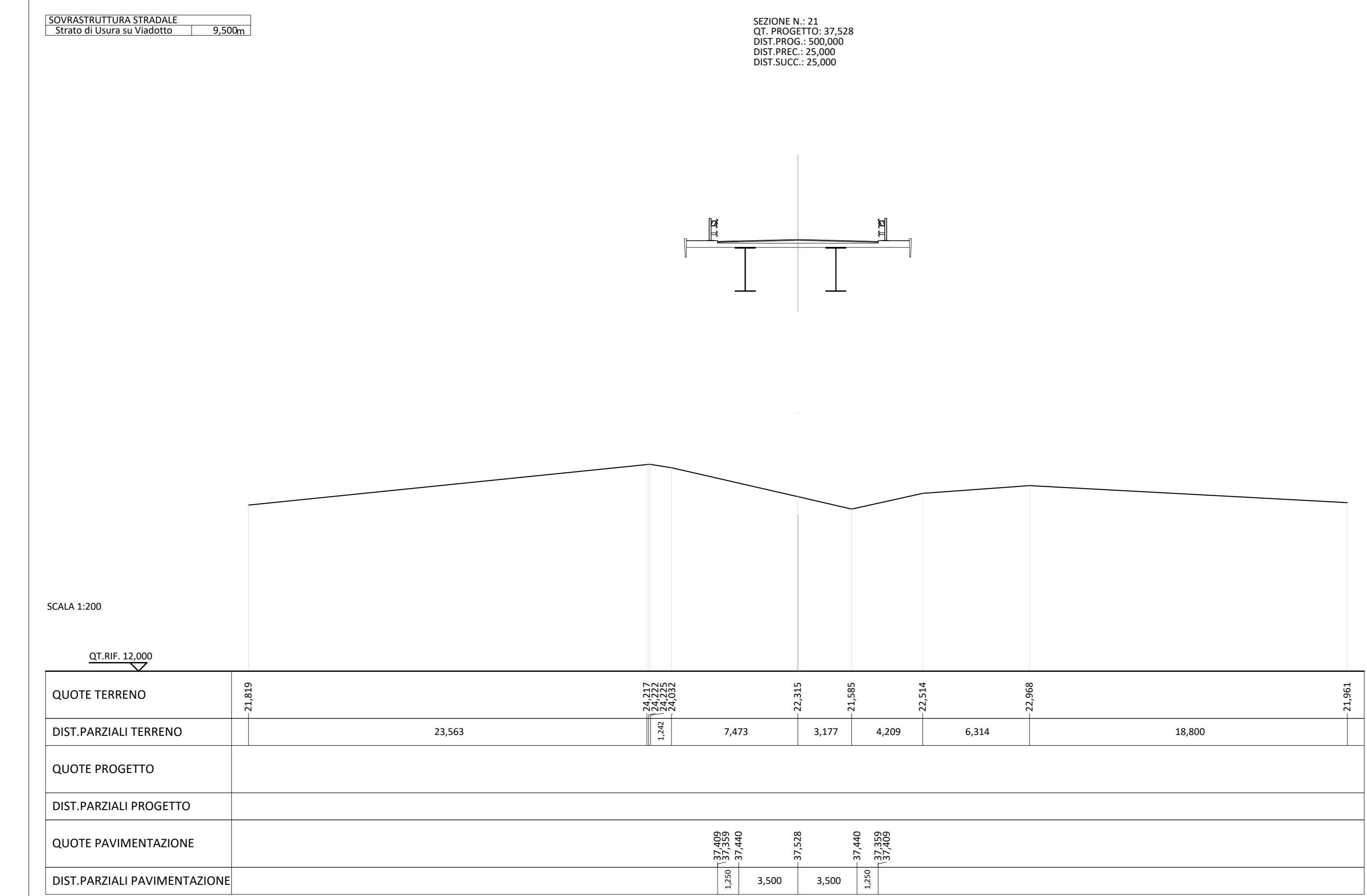
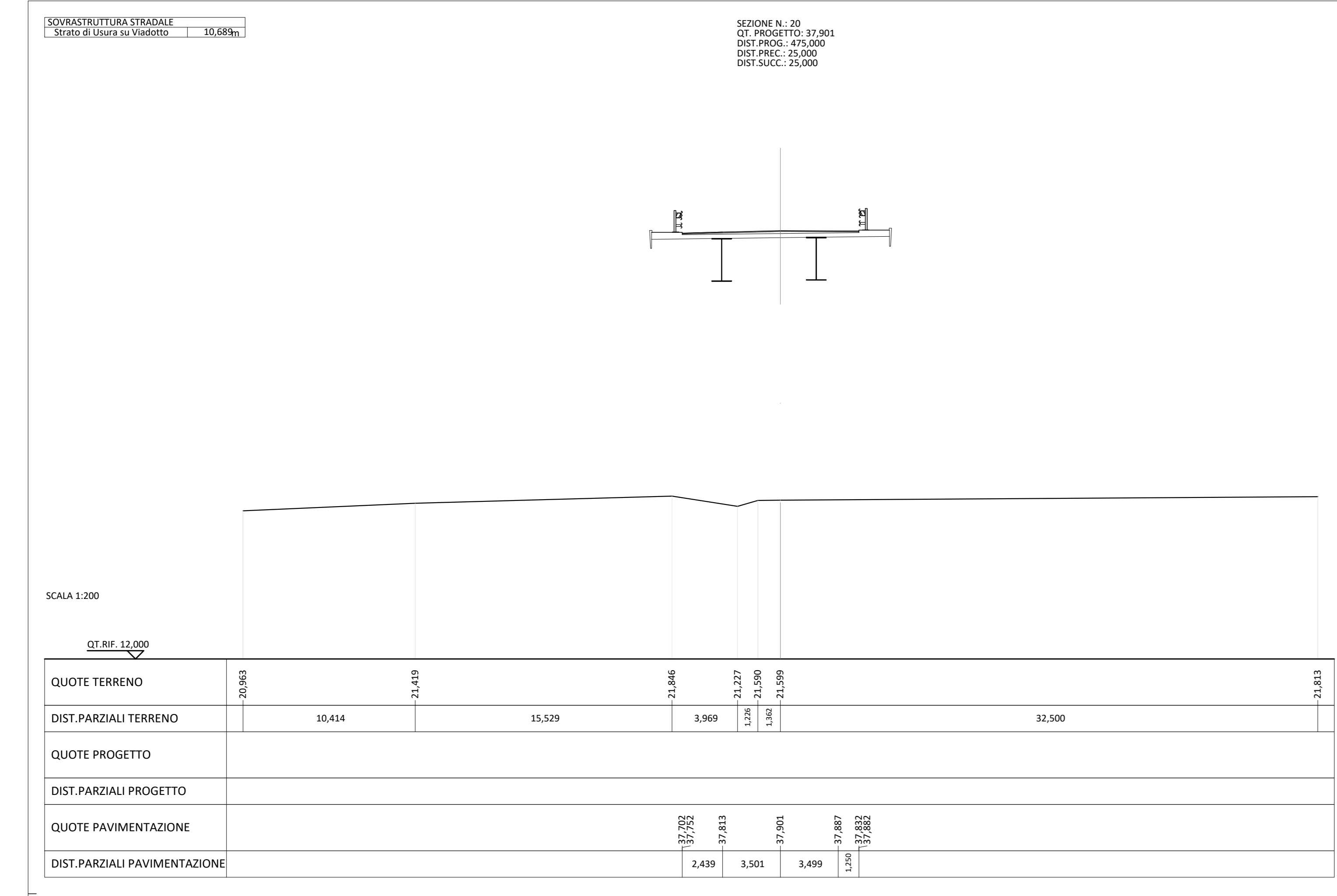
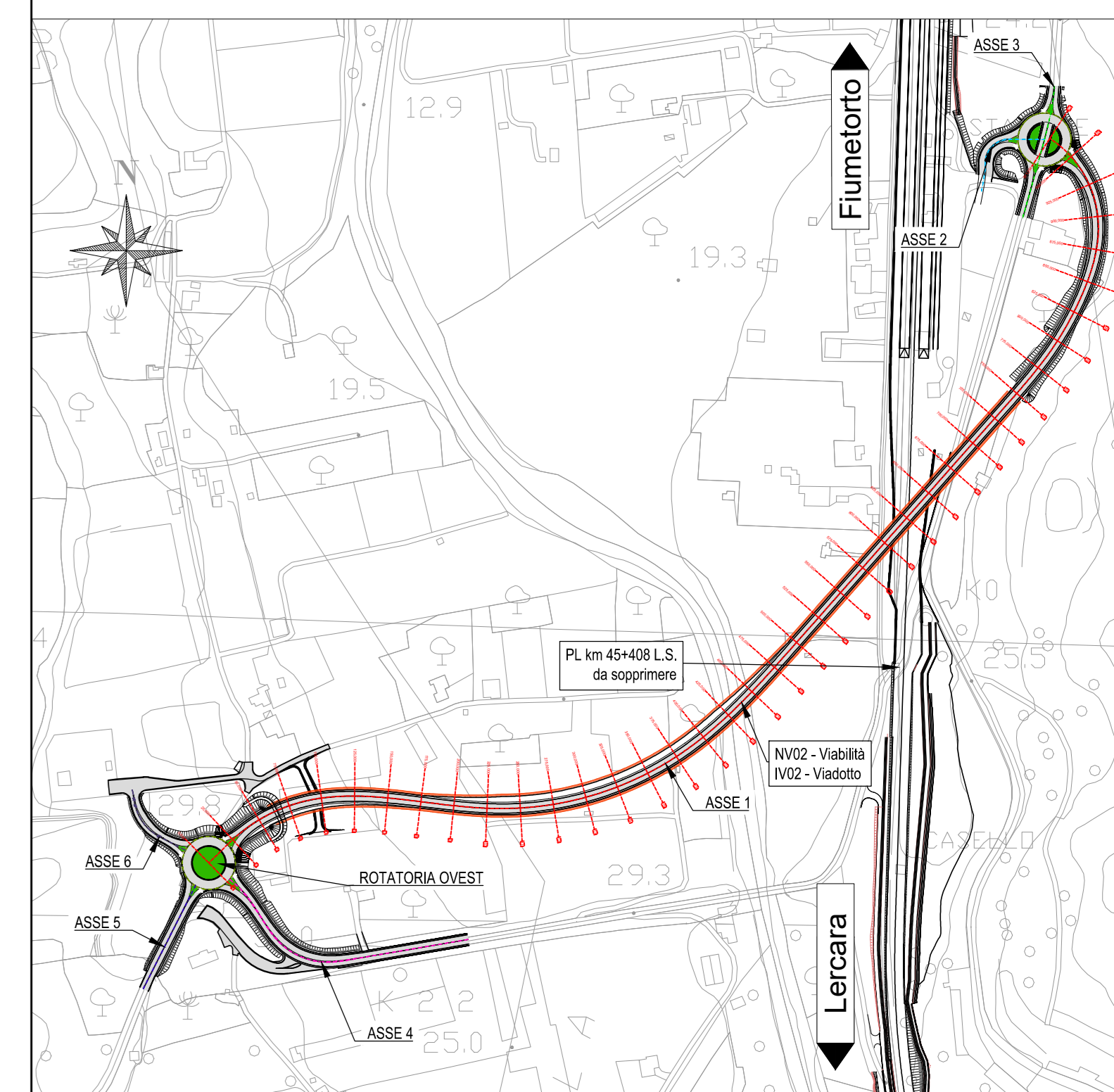


SEZIONI ASSE 1
scala 1:200



KEY PLAN



COMMITTENTE: **RFI** (Rete Ferroviaria Italiana) - GRUPPO FERROVIE DELLO STATO ITALIANE

PROGETTAZIONE: **ITALFERR** (Gruppo Ferrovie dello Stato Italiane)

U.O. PROGETTAZIONE INTEGRATA SUD

PROGETTO DEFINITIVO

DIRETTRICE FERROVIARIA MESSINA - CATANIA - PALERMO
NUOVO COLLEGAMENTO PALERMO - CATANIA

RADDOPPIO TRATTA FIUMETORTO - LERCARA DIRAMAZIONE
LOTTO 1+2

VIABILITA' NV02 - RIPRISTINO COLLEGAMENTO SS113 / SS120 DELL'ETNA E DELLE MADONIE (SOPPRESSIONE PL KM 45+408 L.S.)

NV02 - SEZIONI TRASVERSALI - RAMO 1 - TAV. 3/4

SCALA: 1:200

COMMESSA LOTTO FASE ENTE TIPO DOC. OPERADISCIPLINA Progr. REV. **RS90 00 Y 78 W9 NV0200 003 A**

Rev.	Descrizione	Redatto	Data	Verificato	Data	Approvato	Data	Autorizzato Data
A	Revisione definitiva	A. La Torre	09/06/20	G. L. L...	09/06/20	A. L...	09/06/20	P. R...

File: RS800078W9NV020003A.dwg N. Etab.: ...