

enipower  
stabilimento di Ravenna

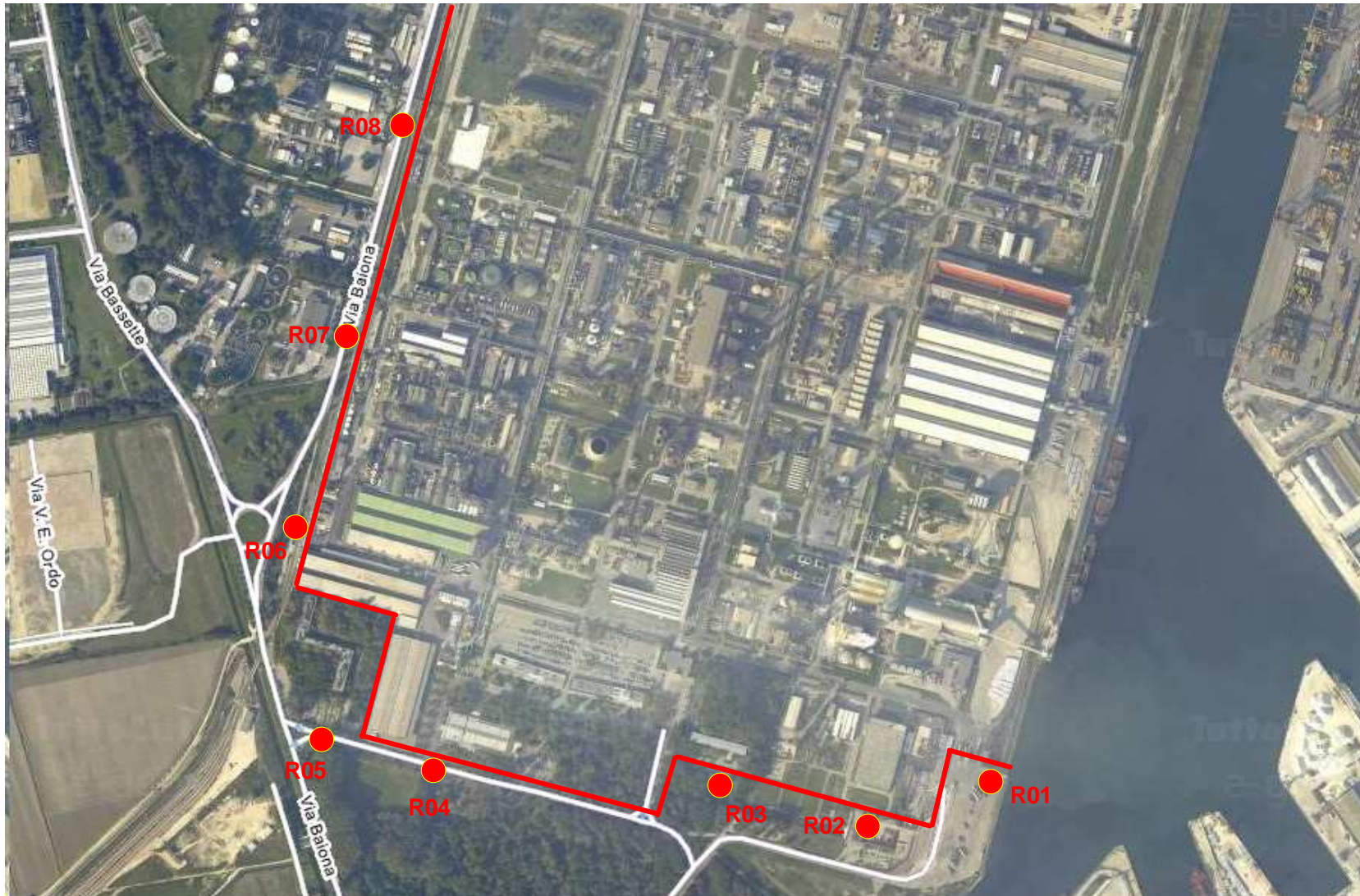
SOSTITUZIONE CALDAIA B400

**campagna di rilevamento del rumore Ante Operam**

**ALLEGATO 7.1**  
**misurazioni al confine del Polo Industriale**

*indagini fonometriche del 22 giugno 2011*

## Individuazione delle postazioni di misura alla Recinzione (1/2)





### Individuazione delle postazioni di misura alla Recinzione (2/2)



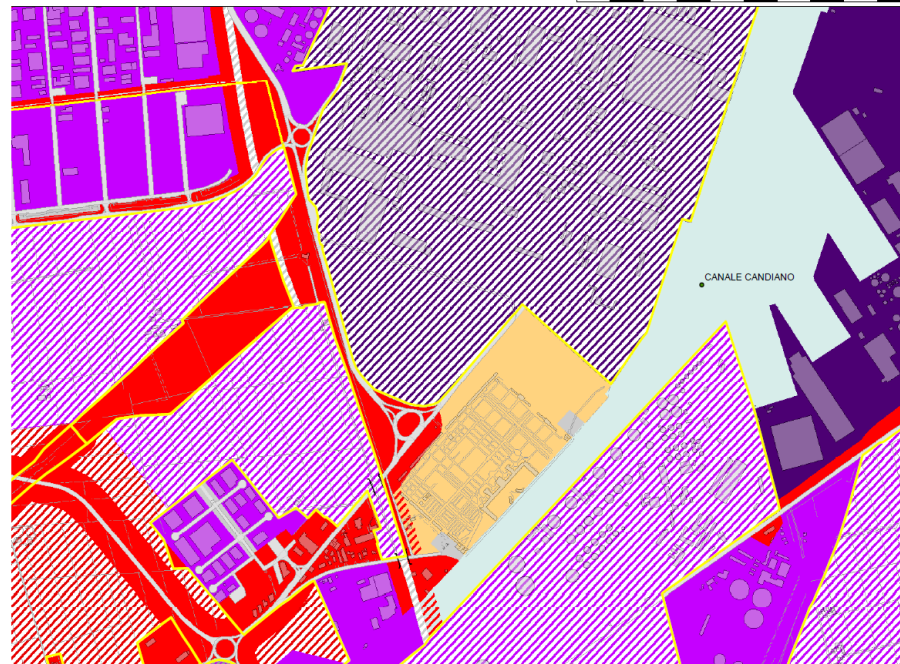


**Estratto dalla Classificazione Acustica del Comune di Ravenna**



folgio 9

folgio 13  
CAPOLUOGO



**LEGENDA**

Viabilità esistente Fasce di prospicenza		Viabilità di progetto Fasce di prospicenza		Ferrovia	Darsena di città
	Classe IV-50 Metri (Strade A,B,C,D)		Classe III - 50 metri (Strade E,E-F)		
	Classe IV-30 Metri (Strade E,E-F)		Classe IV (Strade A,B,C,D)		
Stato Attuale		Stato di Progetto			Allevamenti
	Classe I		Classe I		Scuole
	Classe II		Classe II		Strutture sanitarie
	Classe III		Classe III		
	Classe IV		Classe IV		Ambiti soggetti a POC
	Classe V		Classe V		
	Classe VI		Classe VI		



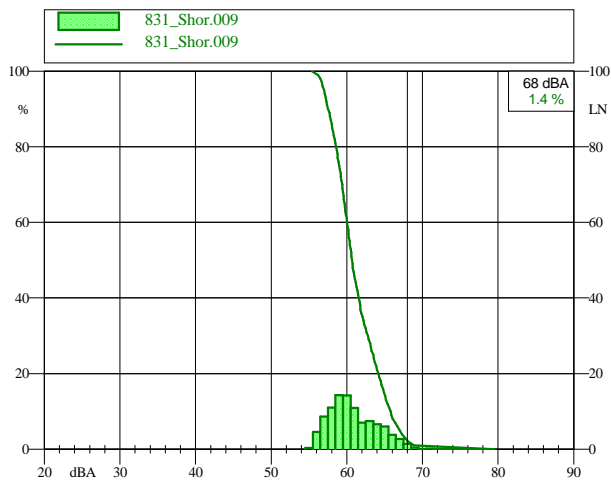
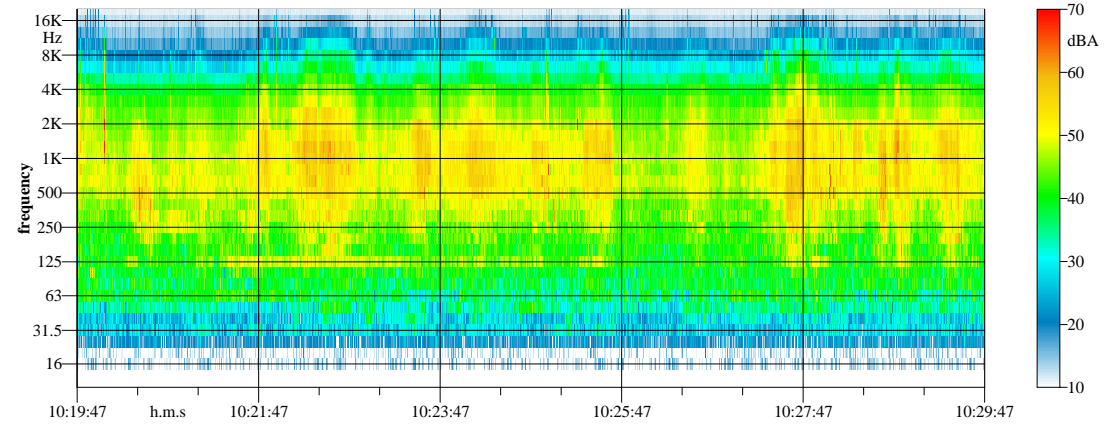
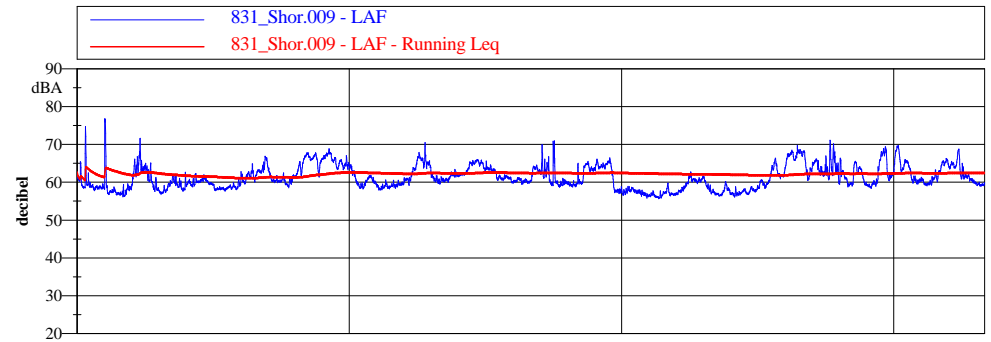
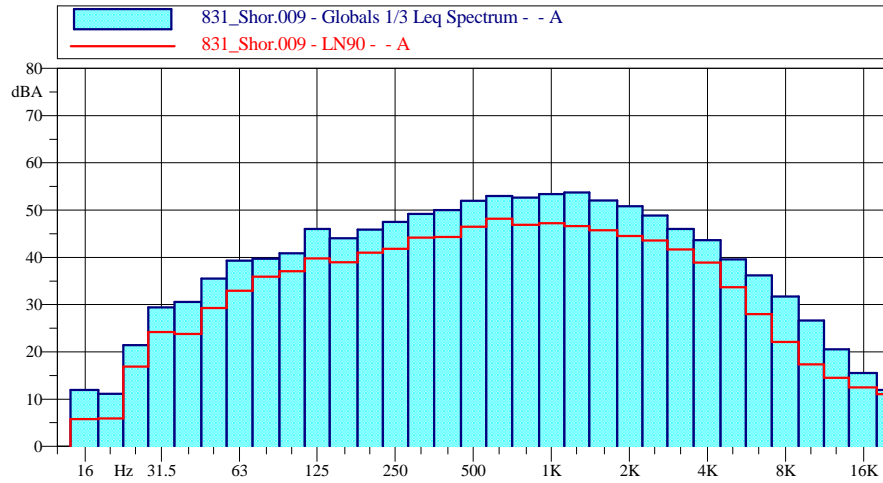
## Limiti di Zona

Classi di destinazione d'uso del territorio		Valori limite delle sorgenti sonore (DPCM 14/11/97) Leq in dB(A)									
		emissione		immissione		qualità		attenzione			
		diurno	nott.	diurno	nott.	diurno	nott.	diurno	nott.	diurno orario	nott. orario
I	aree particolarmente protette	45	35	<b>50</b>	<b>40</b>	47	37	50	40	60	45
II	aree prevalentemente residenziali	50	40	<b>55</b>	<b>45</b>	52	42	55	45	65	50
III	aree di tipo misto	55	45	<b>60</b>	<b>50</b>	57	47	60	50	70	55
IV	aree di intensa attività umana	60	50	<b>65</b>	<b>55</b>	62	52	65	55	75	60
V	aree prevalentemente industriali	65	55	<b>70</b>	<b>60</b>	67	57	70	60	80	65
VI	aree esclusivamente industriali	65	65	<b>70</b>	<b>70</b>	70	70	70	70	80	75

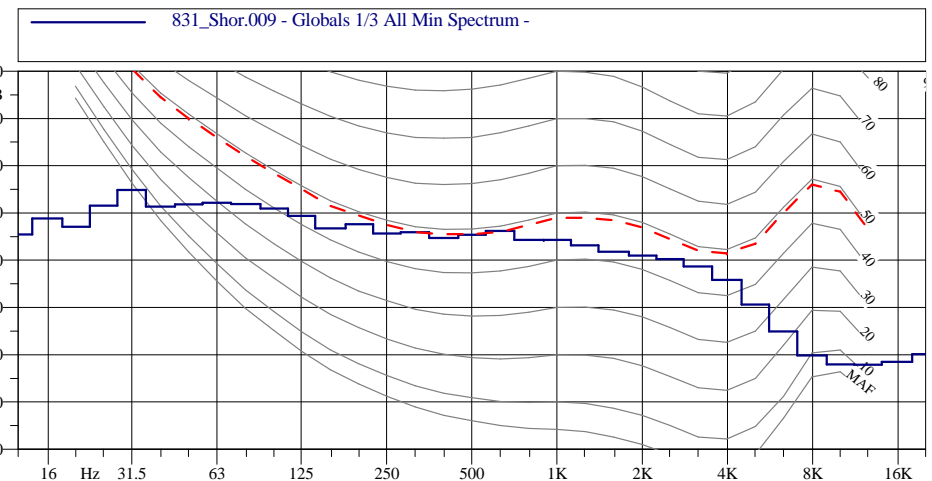
## Sintesi dei Risultati dei Rilevamenti Fonometrici

postazione	posizione		classe acustica	livelli misurati		eventuale C.T.
	N	E		LAeq	LAF90	
R01	44° 27.497'	12° 14.414'	VI	62.5	57.5	-
R02	44° 26.463'	12° 14.253'	VI	49.0	47.0	-
R03	44° 26.492'	12° 14.080'	VI	55.5	53.0	-
R04	44° 26.522'	12° 13.770'	VI	58.0	54.0	-
R05	44° 26.535'	12° 13.684'	VI	59.0	52.0	-
R06	44° 26.704'	12° 13.627'	VI	58.0	53.5	-
R07	44° 26.850'	12° 13.694'	VI	71.5	60.0	-
R08	44° 27.088'	12° 13.782'	VI	71.0	58.0	-
R09	44° 27.180'	12° 13.820'	VI	70.0	57.0	-
R10	44° 27.370'	12° 13.901'	VI	68.5	55.5	-
R10	44° 27.478'	12° 14.062'	VI	60.0	57.5	-
R12	44° 27.451'	12° 14.178'	VI	58.5	56.5	315 Hz
R13	44° 27.722'	12° 14.257'	VI	56.5	49.5	160 Hz
R14	44° 27.645'	12° 14.623'	VI	52.0	46.5	-
R15	44° 27.579'	12° 14.891'	VI	58.0	56.0	-

Postazione R01  
Rumore Ante Operam

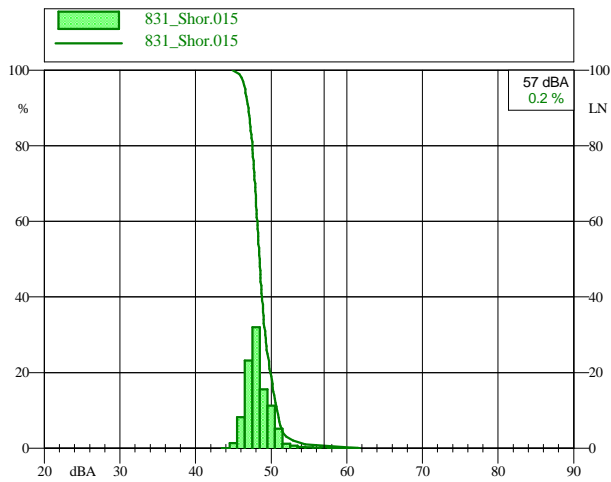
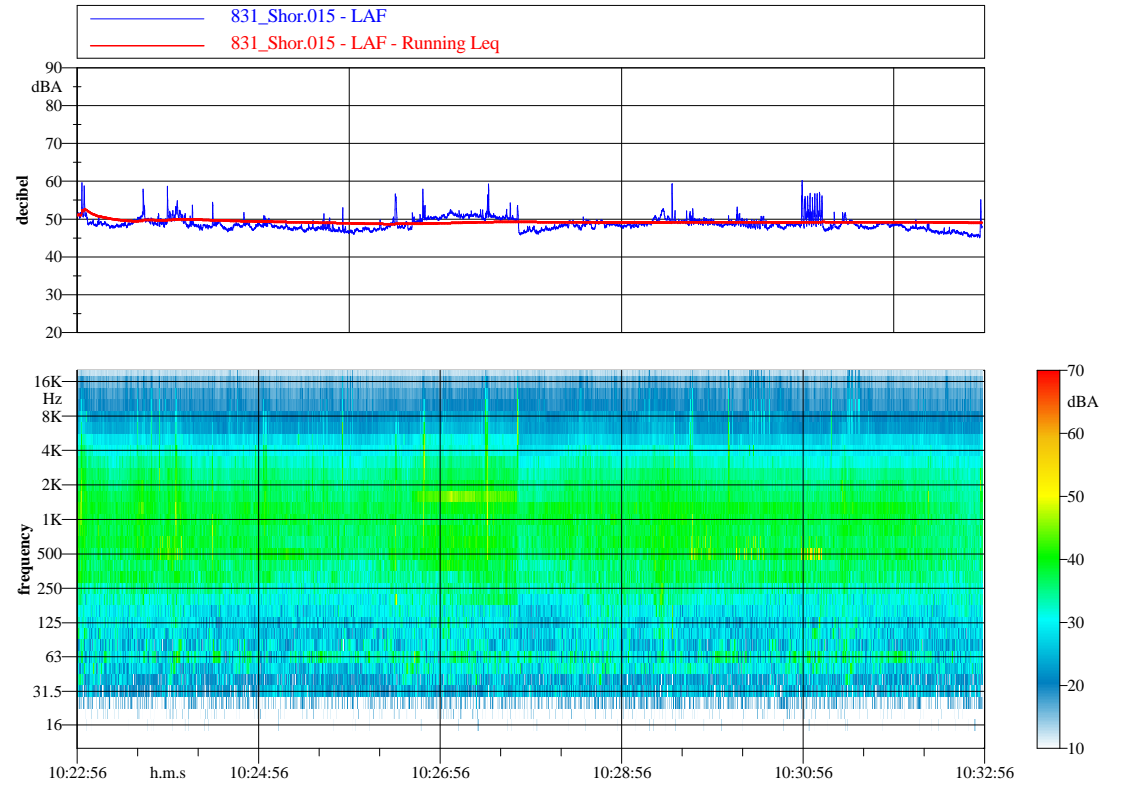
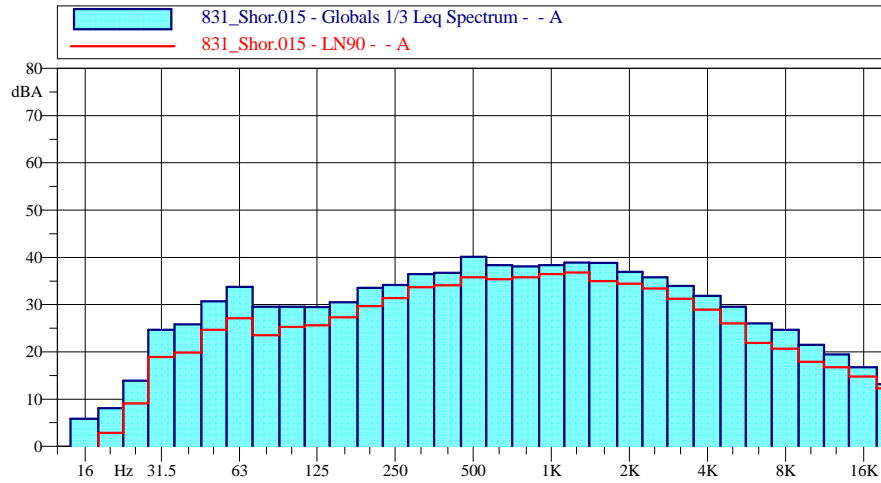


**Leq = 62.6 dBA**  
**L90 = 57.6 dBAF**  
**Lmin = 55.7 dBAF**

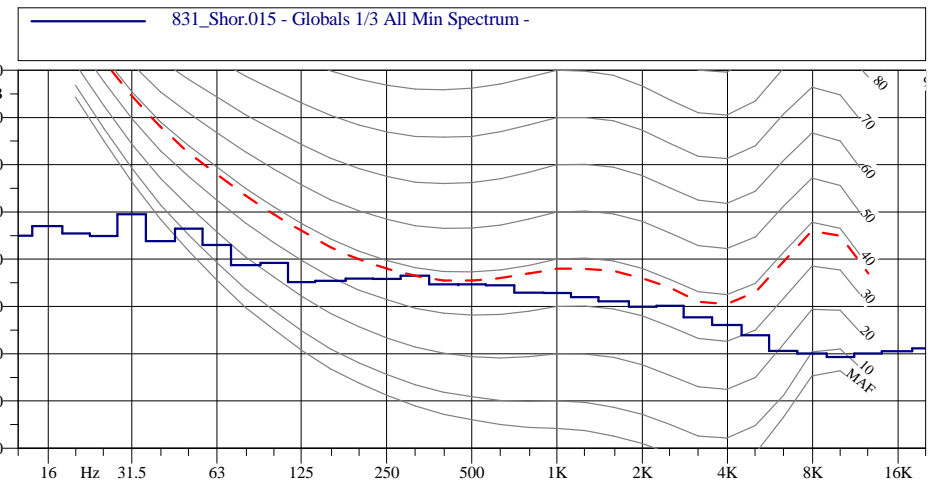




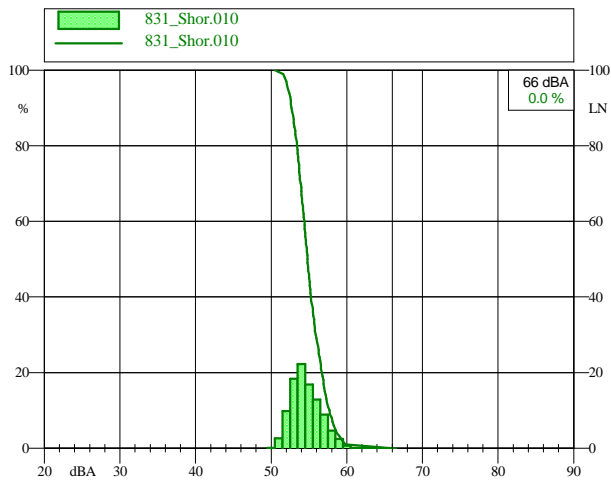
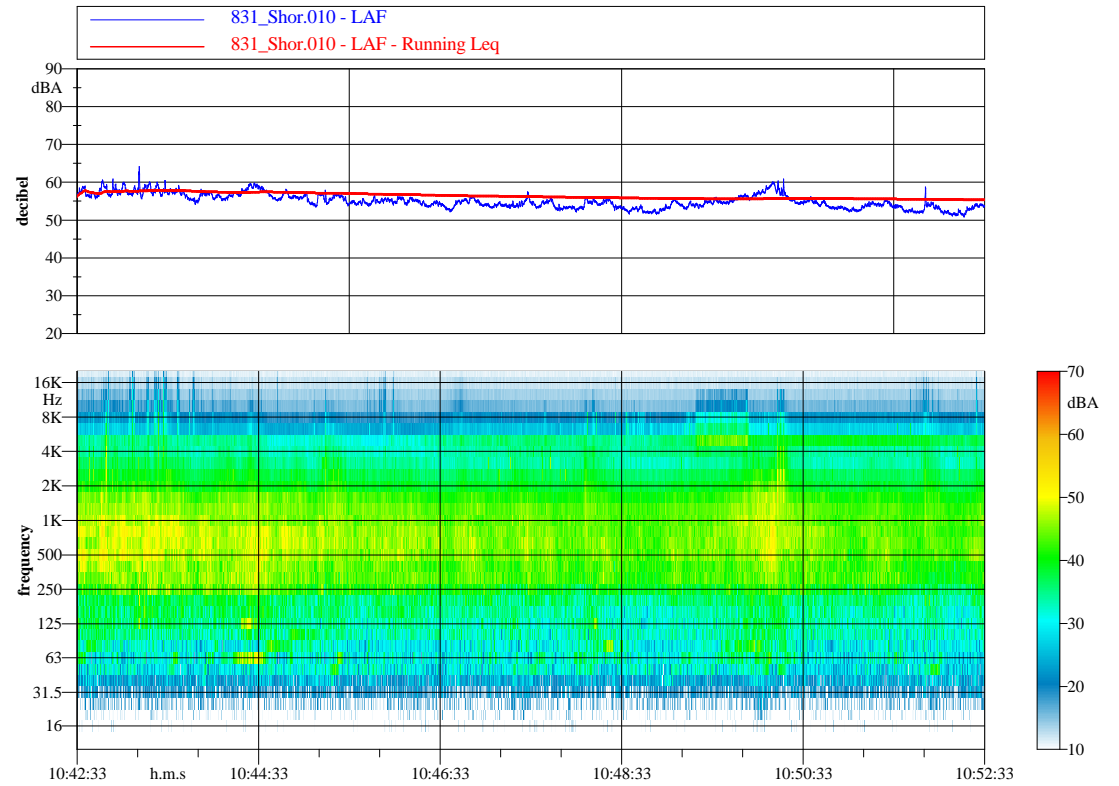
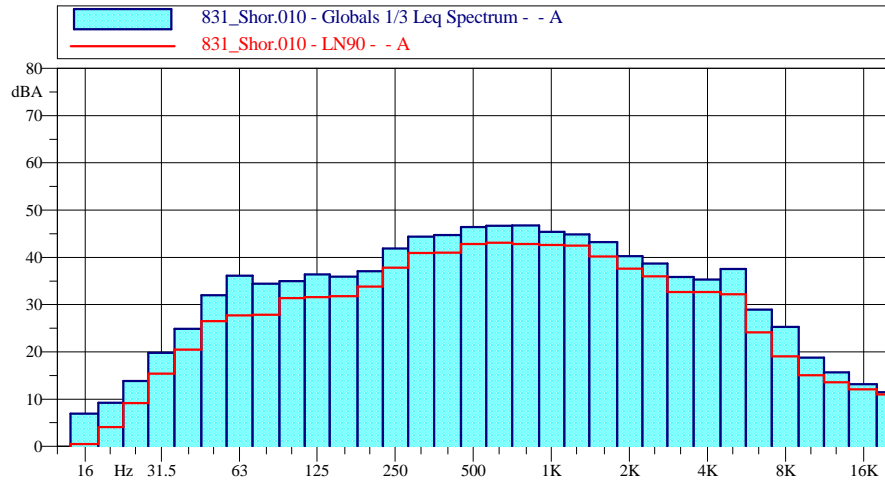
Postazione R02  
Rumore Ante Operam



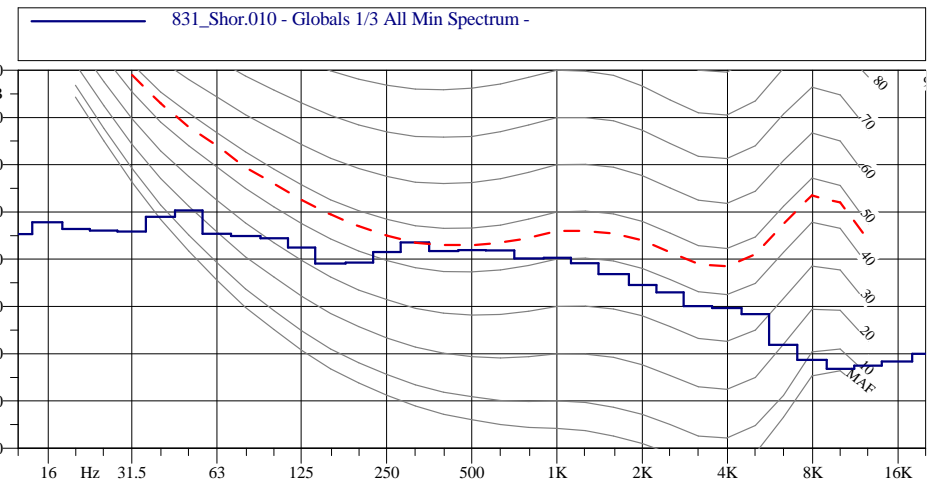
**Leq = 49.1 dBA**  
**L90 = 47.0 dBAF**  
**Lmin = 44.9 dBAF**



Postazione R03  
Rumore Ante Operam

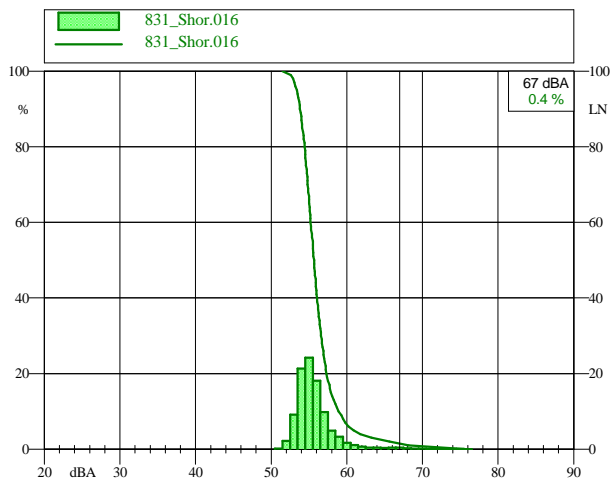
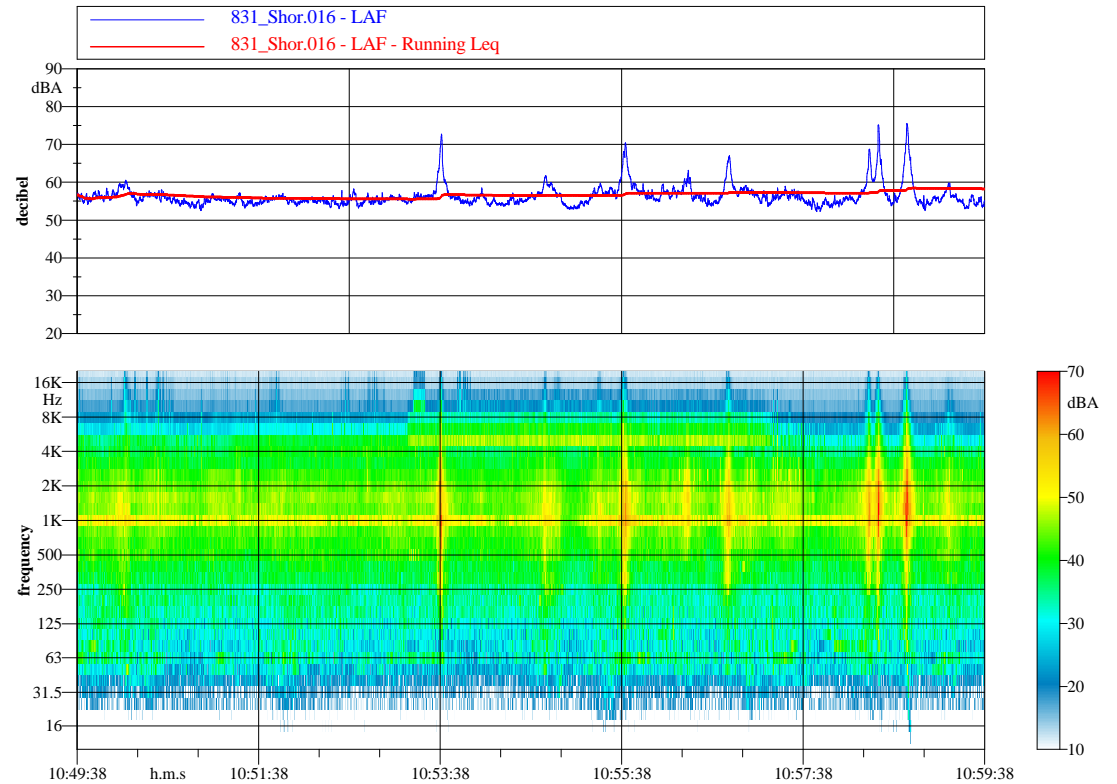
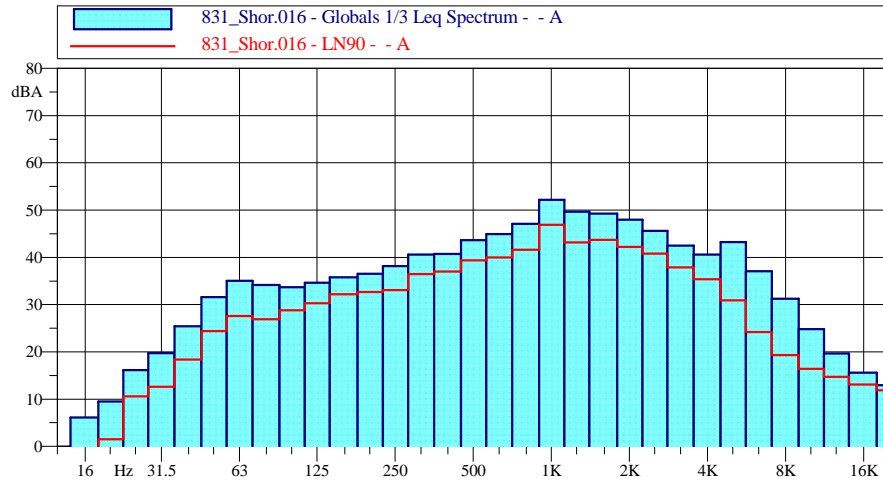


**Leq = 55.5 dBA**  
**L90 = 52.8 dBAF**  
**Lmin = 50.7 dBAF**

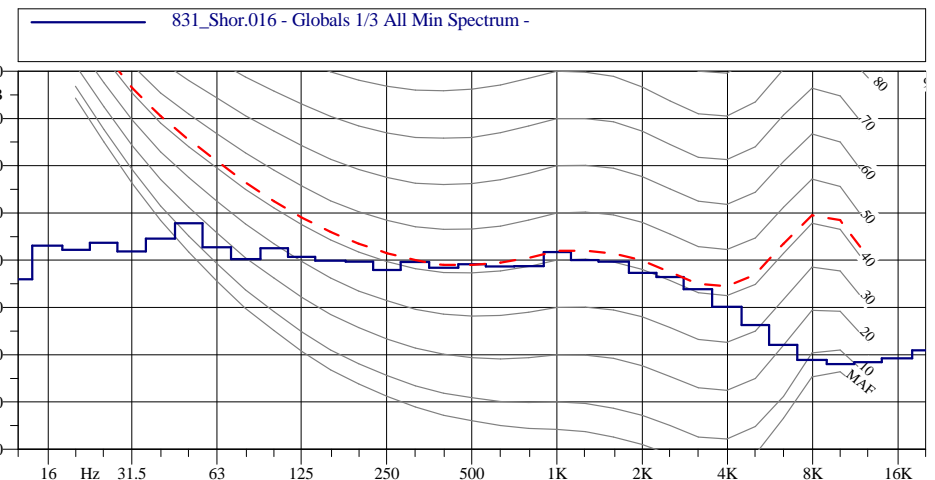




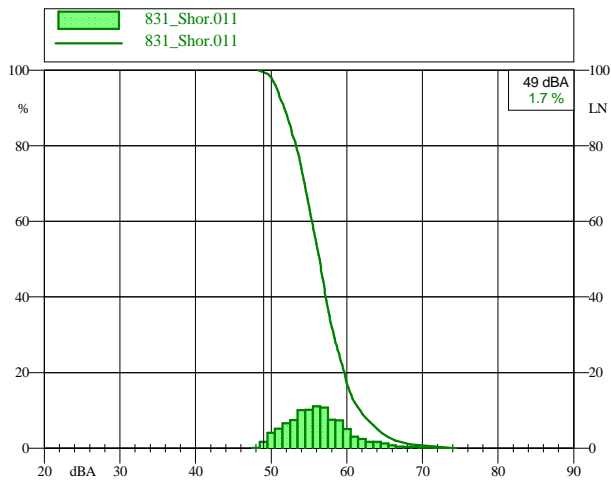
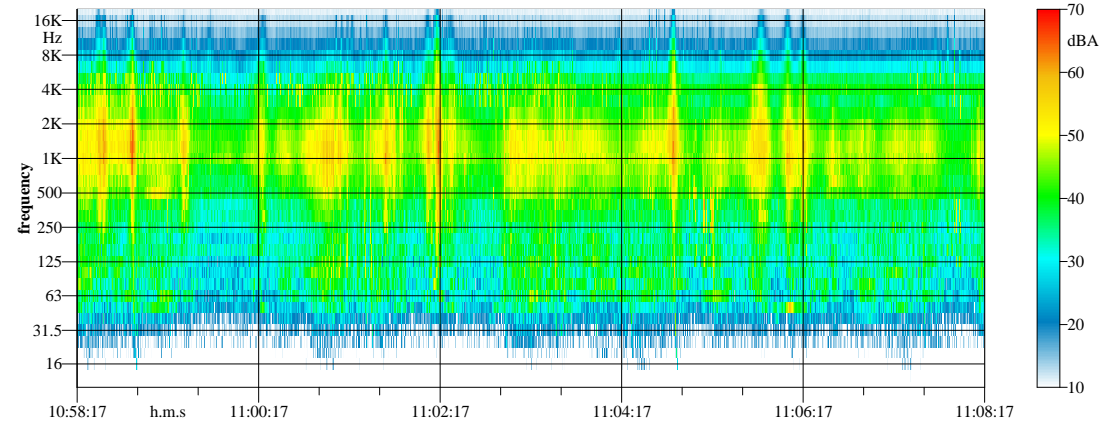
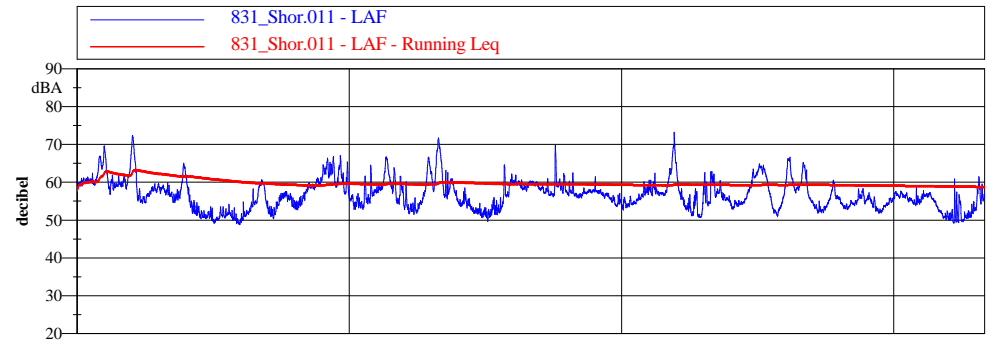
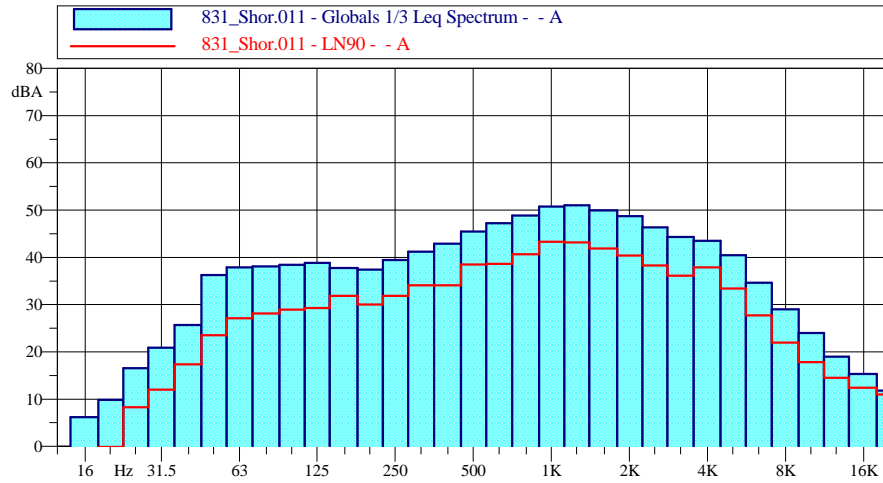
Postazione R04  
Rumore Ante Operam



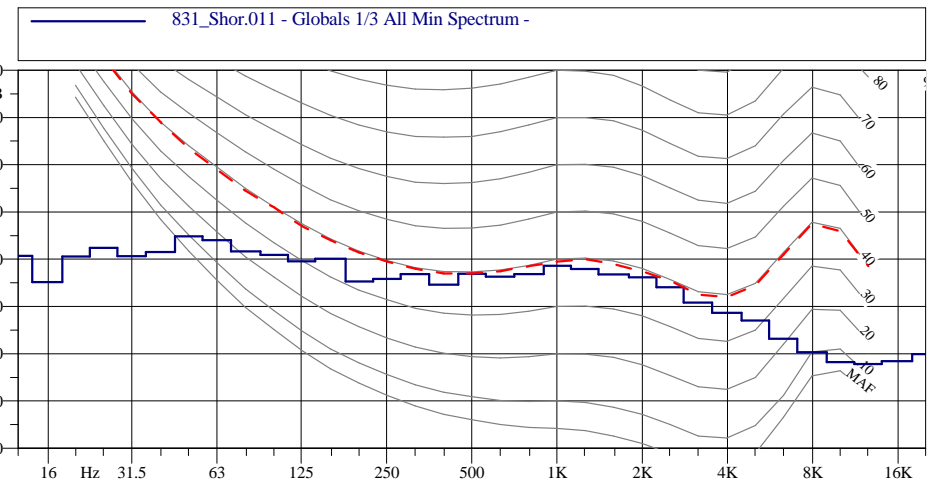
**Leq = 58.2 dBA**  
**L90 = 53.9 dBAF**  
**Lmin = 51.7 dBAF**



Postazione R05  
Rumore Ante Operam

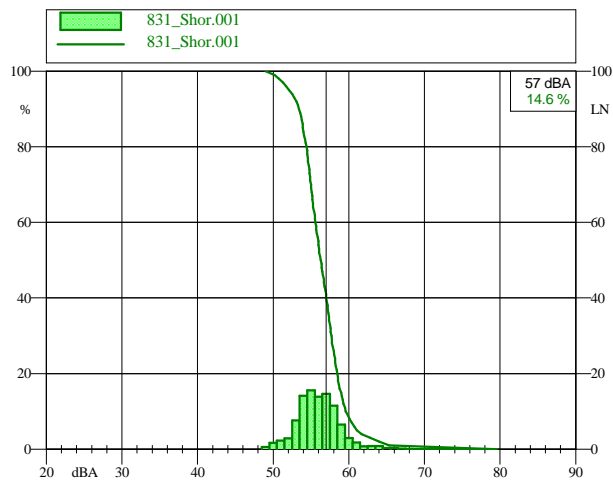
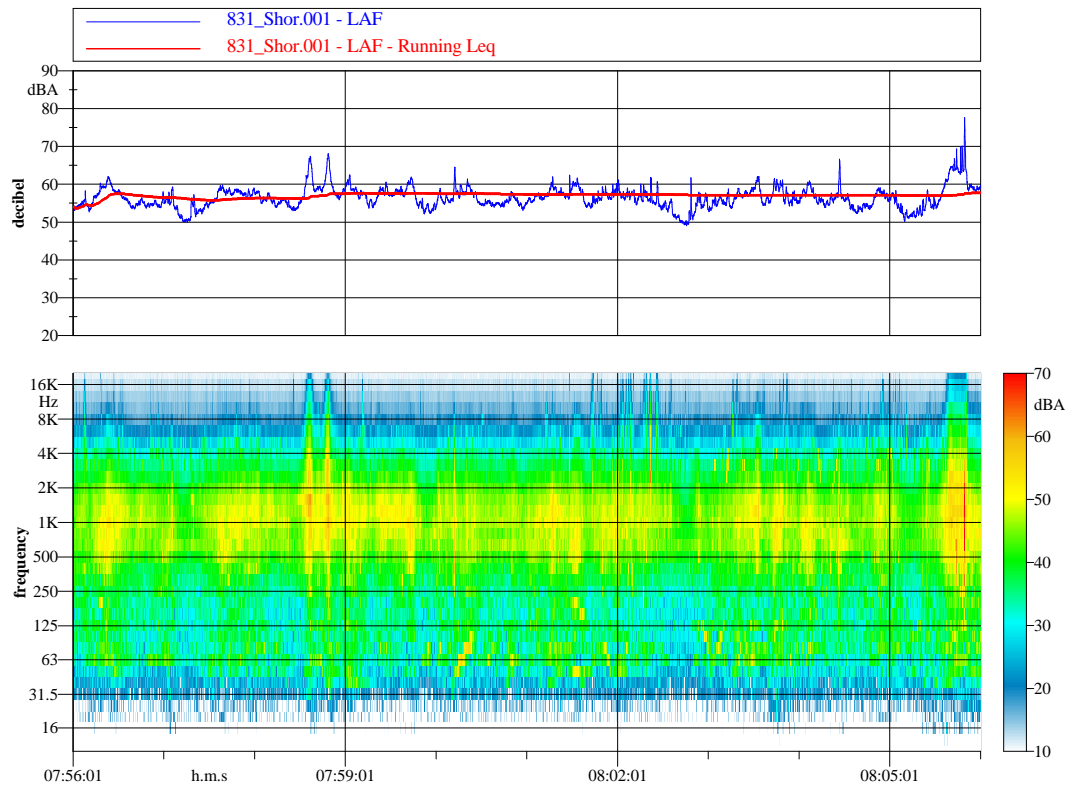
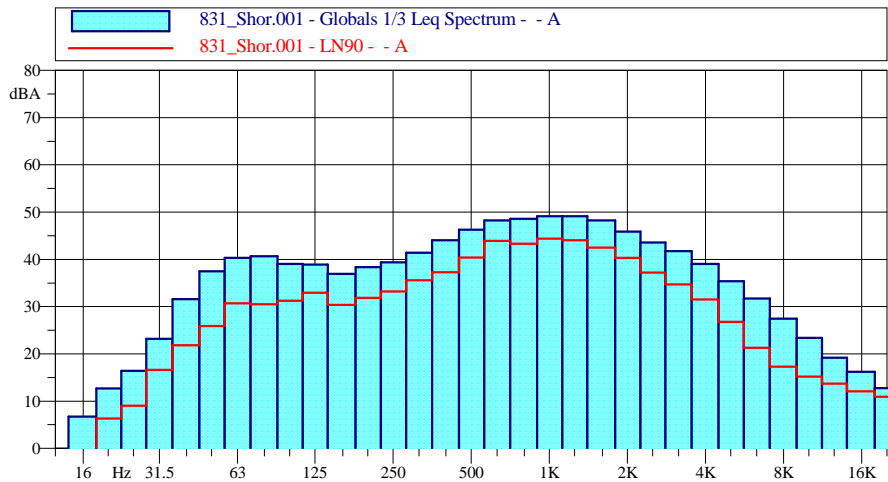


**Leq = 58.9 dBA**  
L90 = 51.9 dBAF  
Lmin = 48.7 dBAF

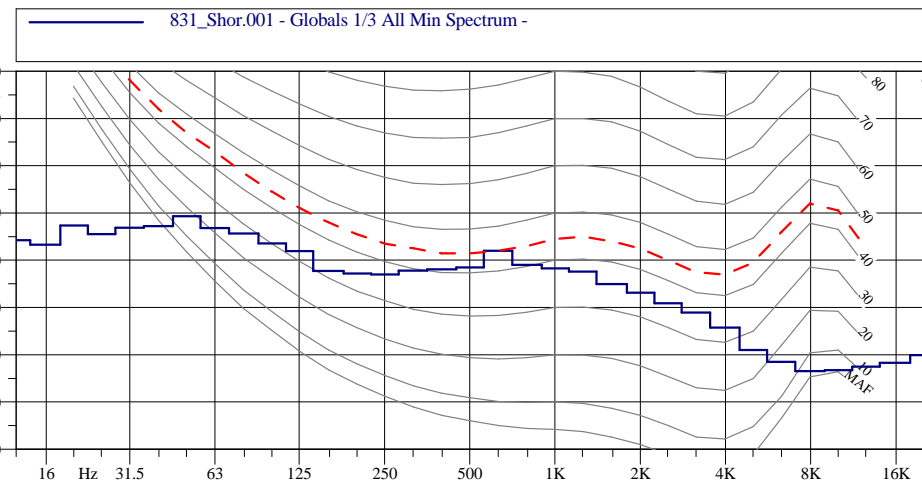




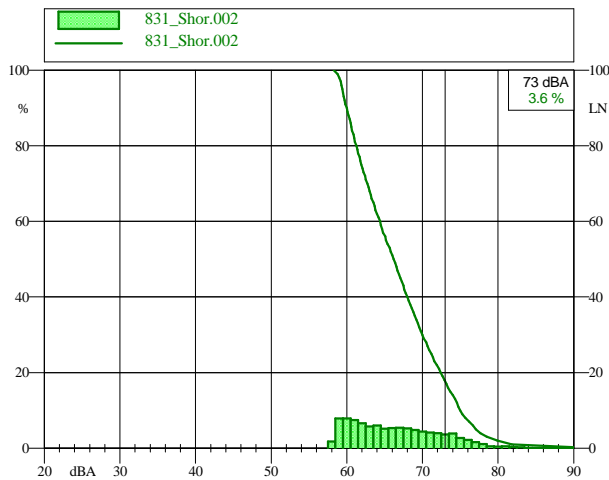
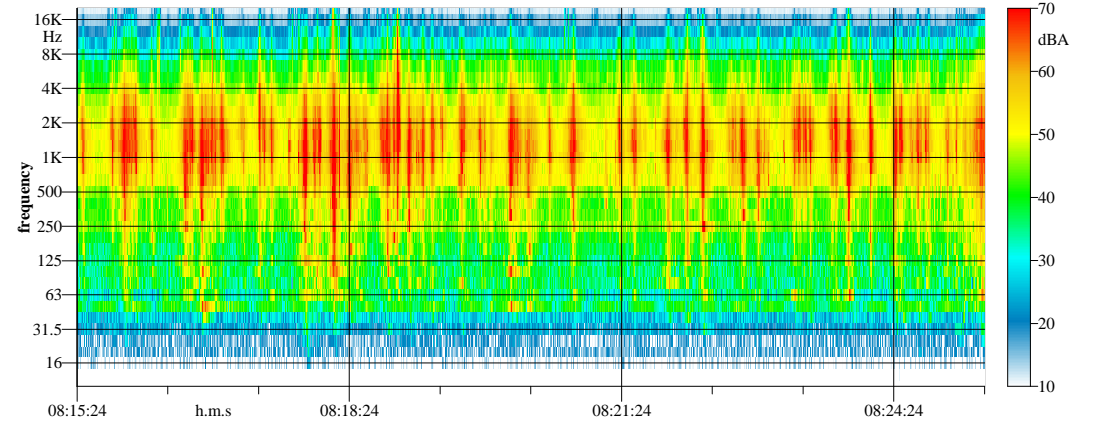
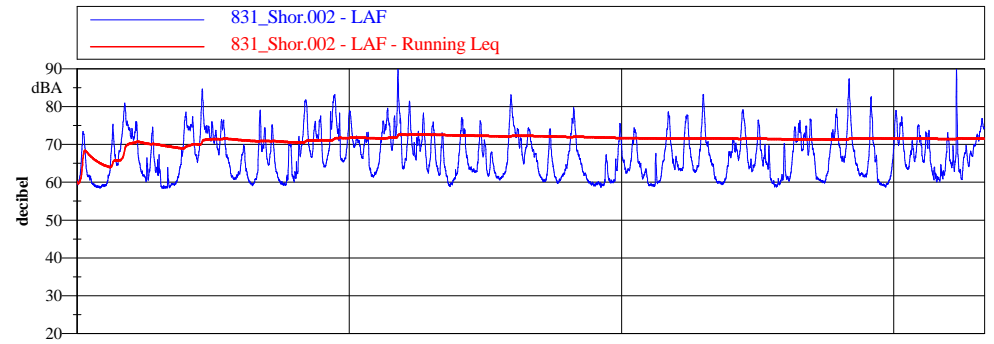
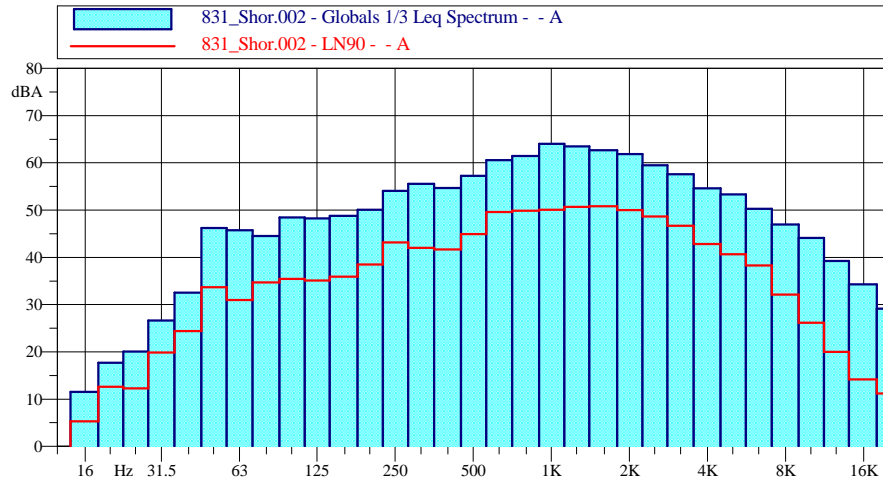
Postazione R06  
Rumore Ante Operam



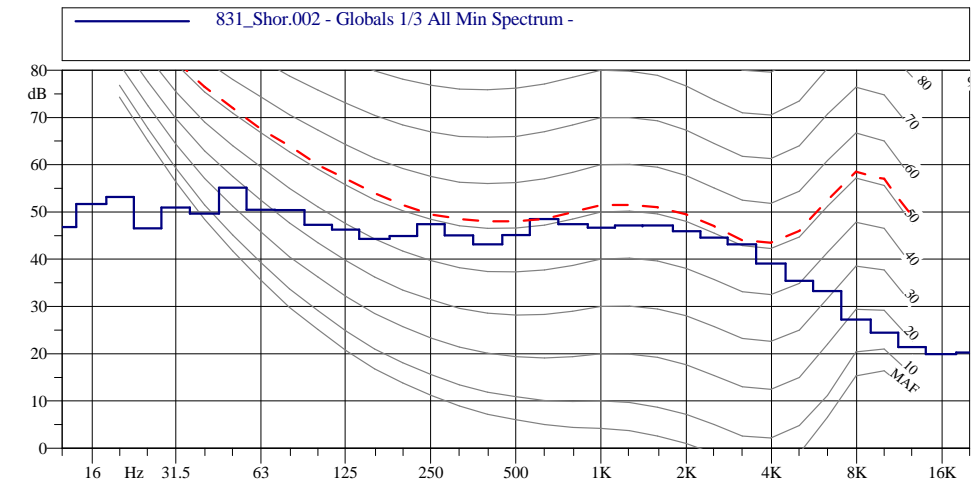
**Leq = 57.8 dBA**  
L90 = 53.5 dBAF  
Lmin = 49.1 dBAF



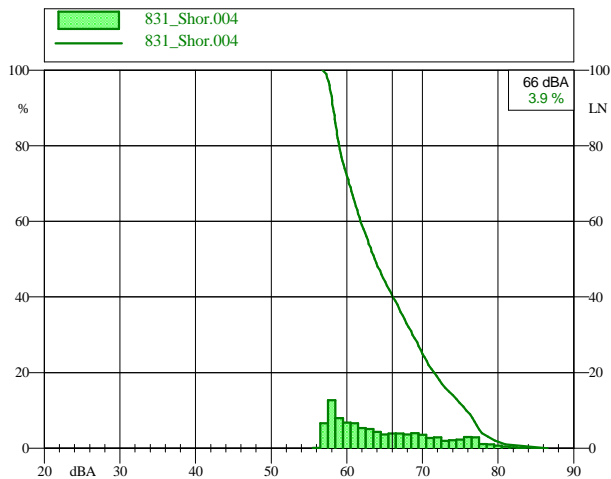
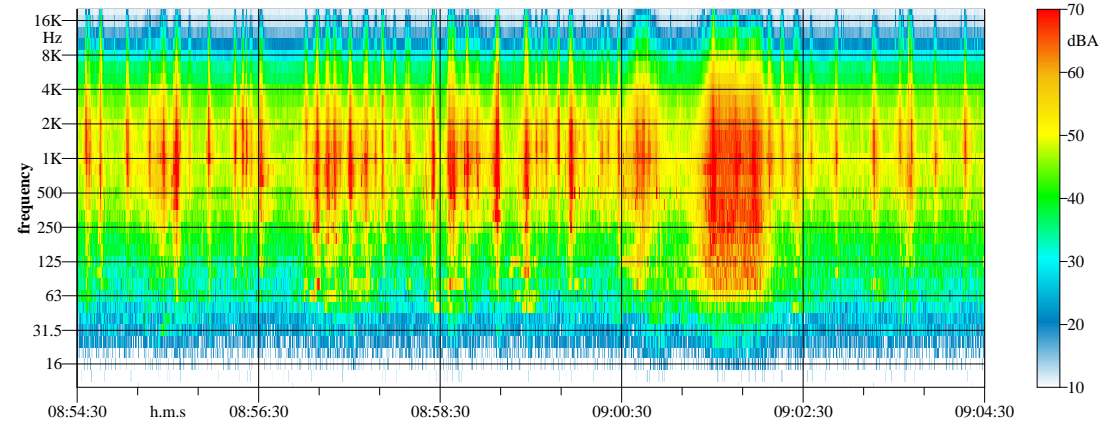
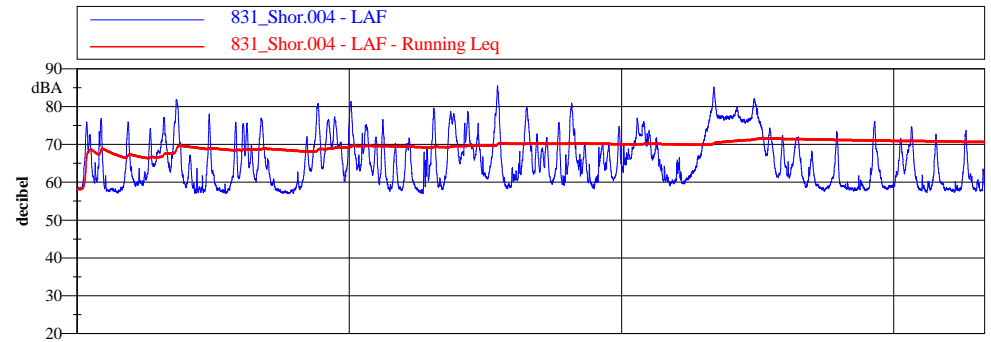
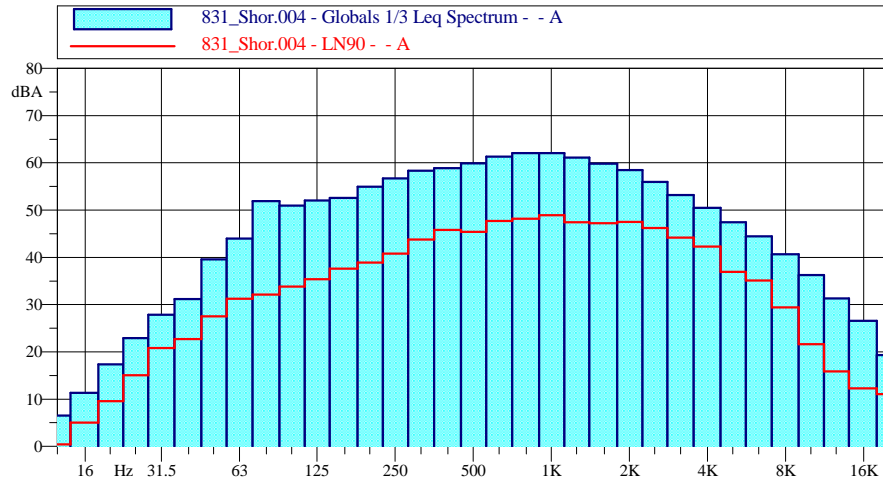
Postazione R07  
Rumore Ante Operam



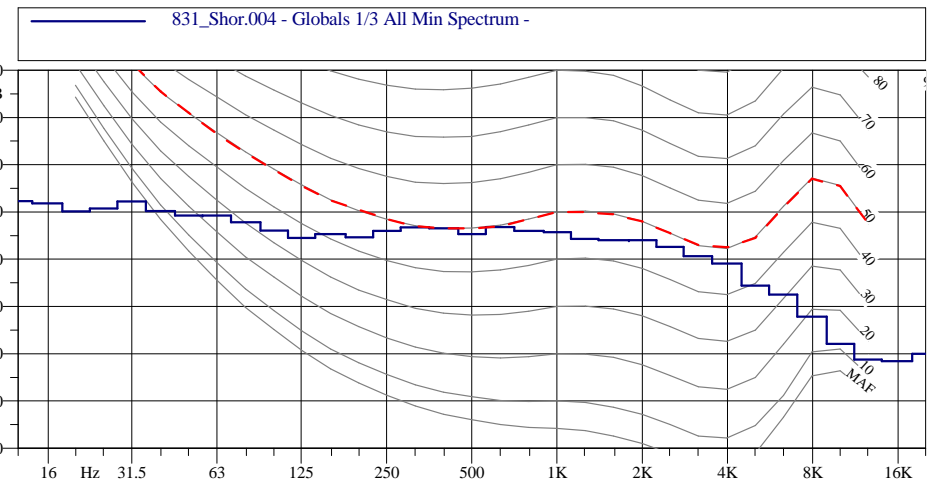
**Leq = 71.7 dBA**  
L90 = 60.0 dBAF  
Lmin = 58.2 dBAF



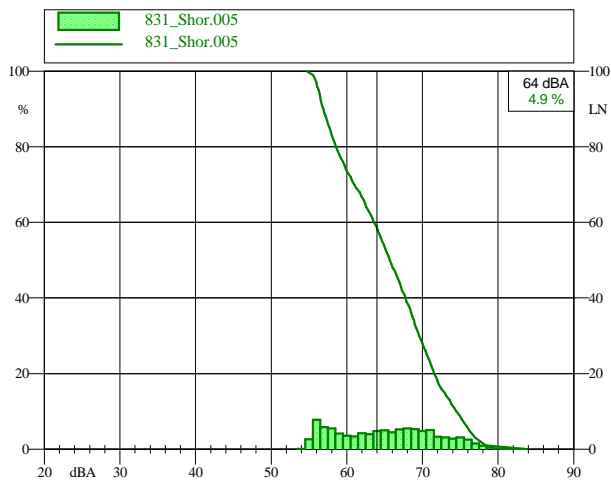
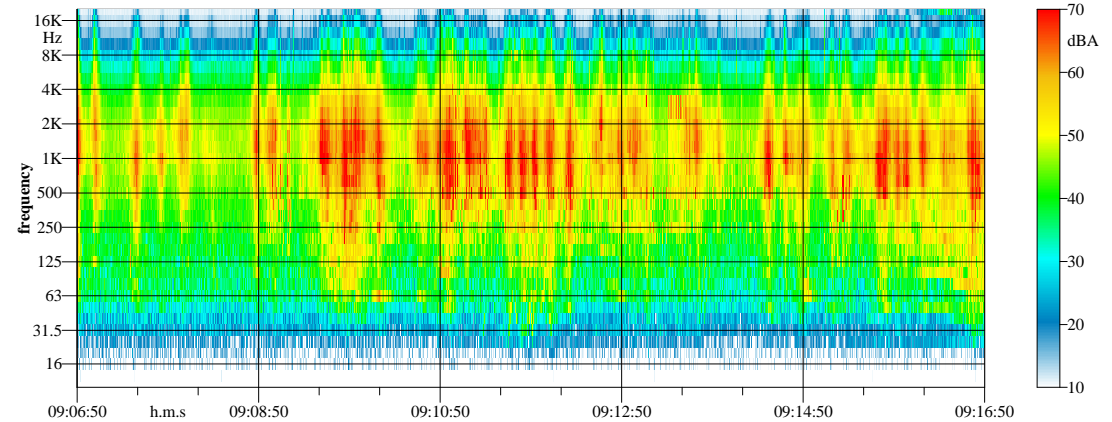
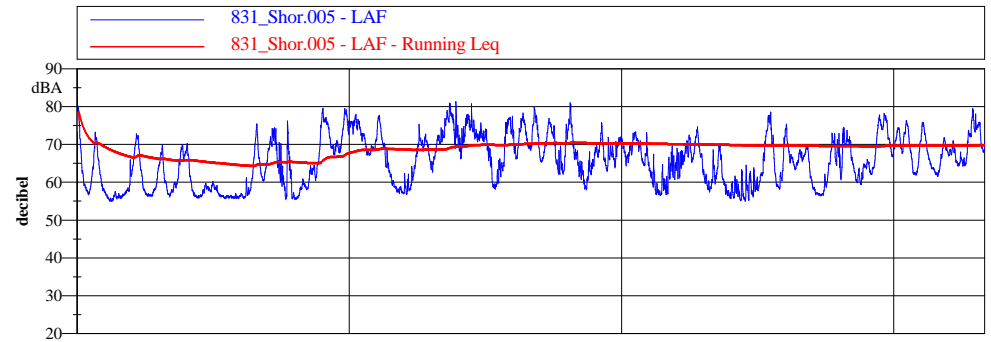
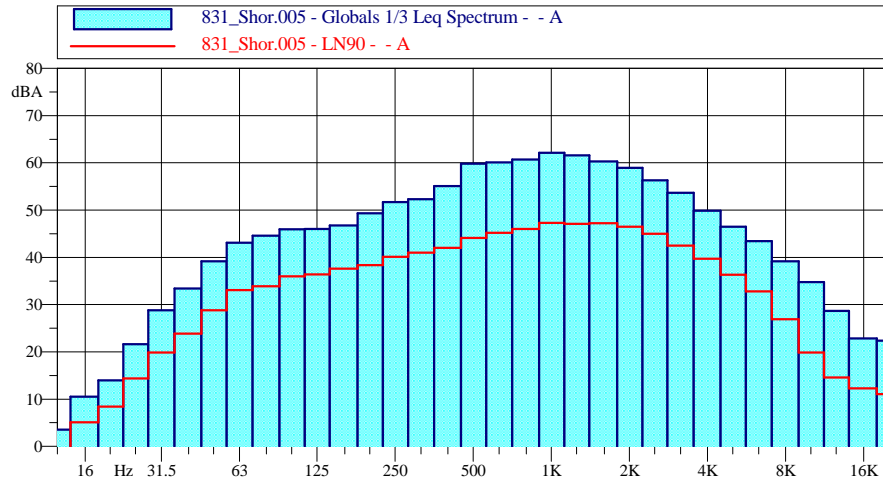
Postazione R08  
Rumore Ante Operam



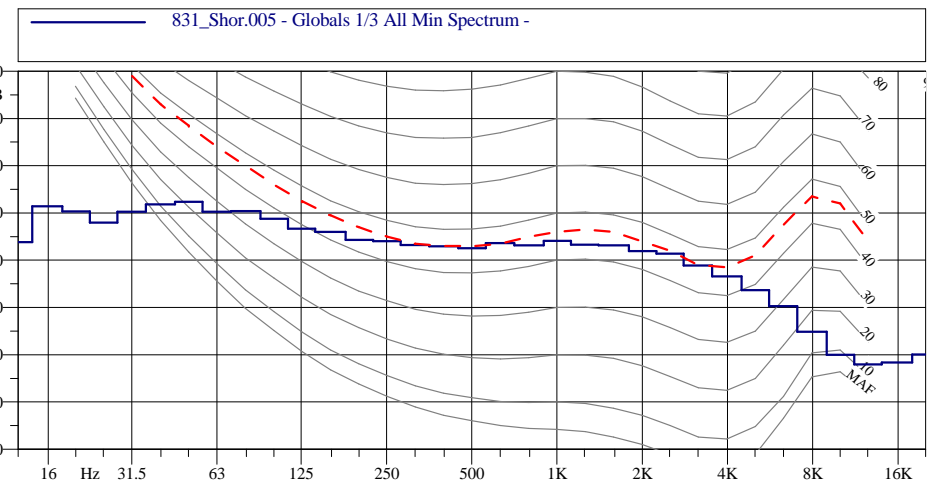
**Leq = 70.9 dBA**  
L90 = 58.2 dBAF  
Lmin = 57.0 dBAF



Postazione R09  
Rumore Ante Operam

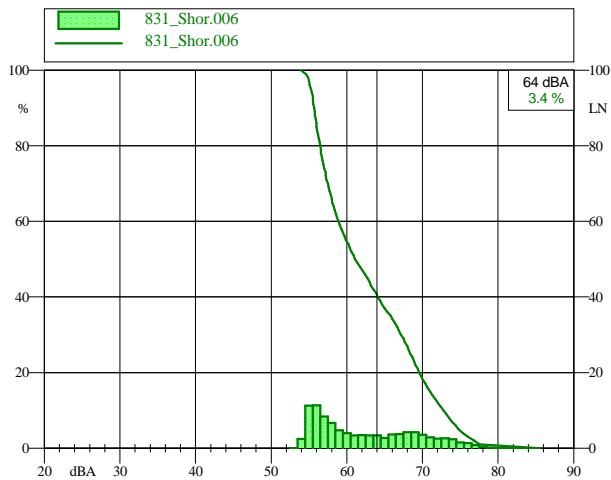
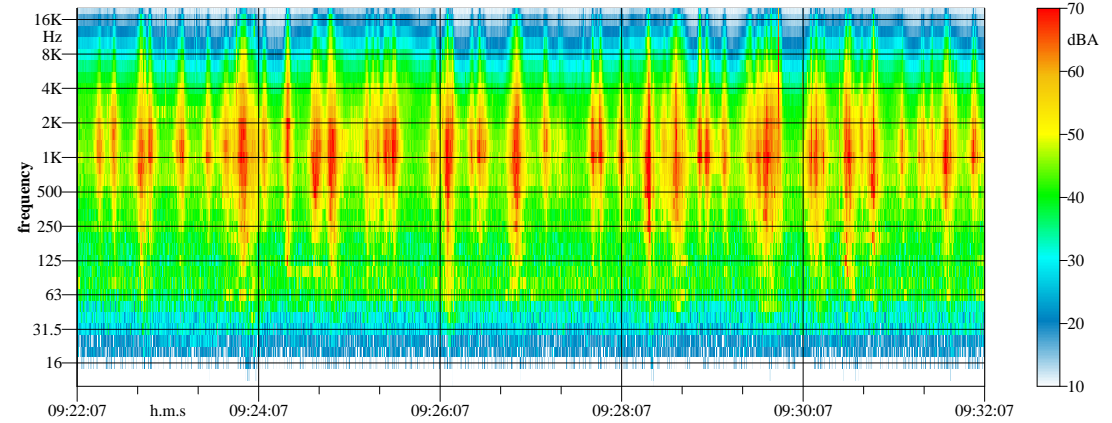
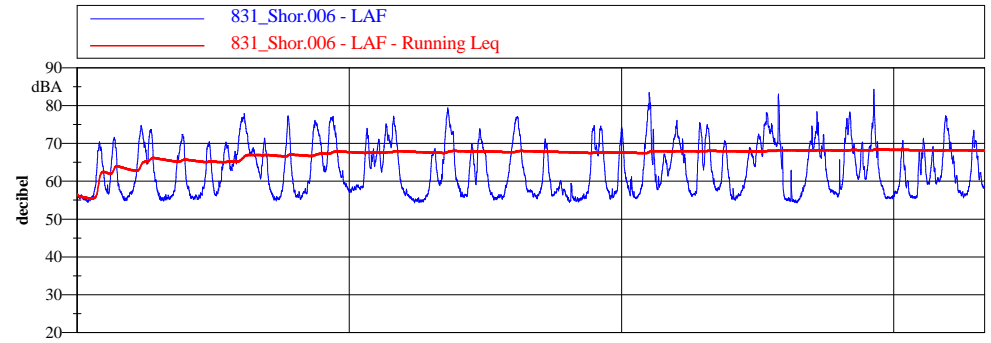
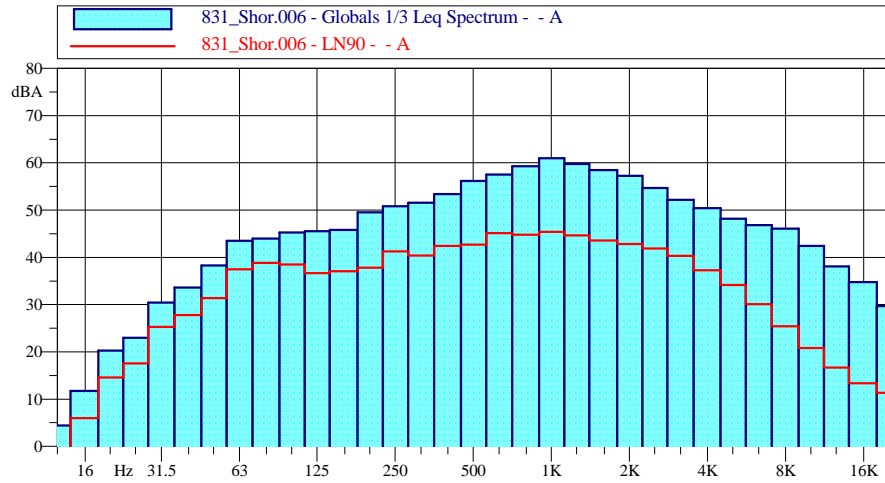


**Leq = 69.9 dBA**  
**L90 = 57.0 dBAF**  
**Lmin = 54.9 dBAF**

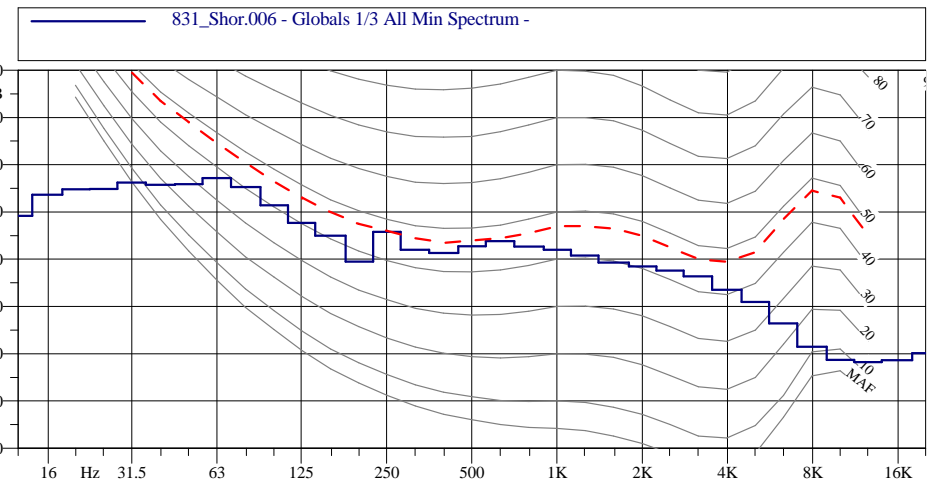




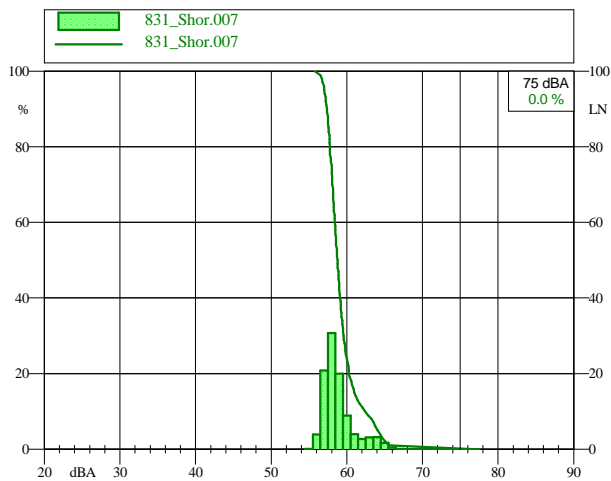
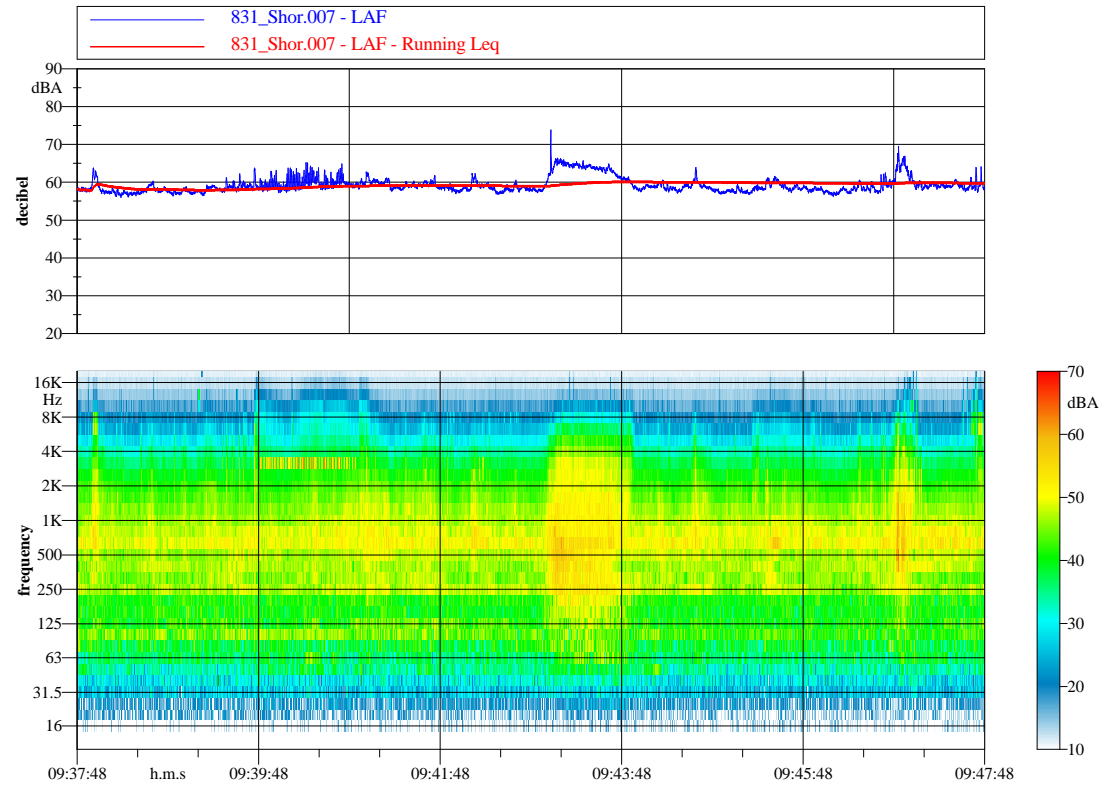
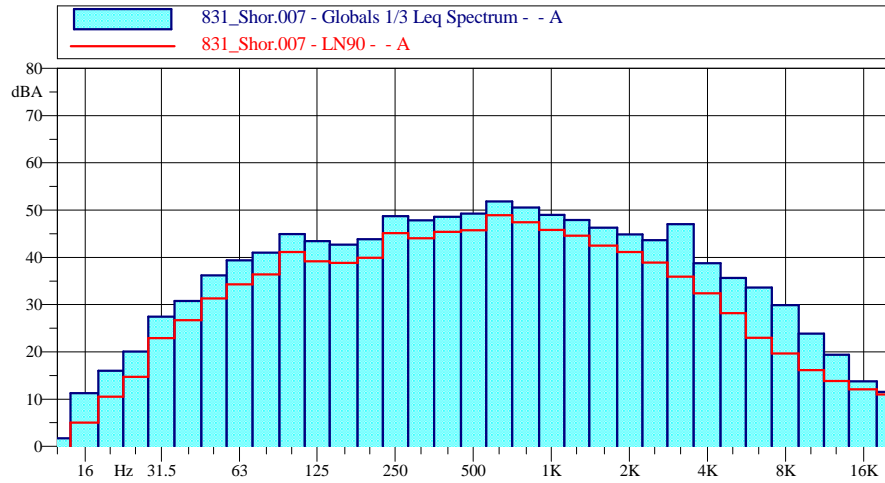
Postazione R10  
Rumore Ante Operam



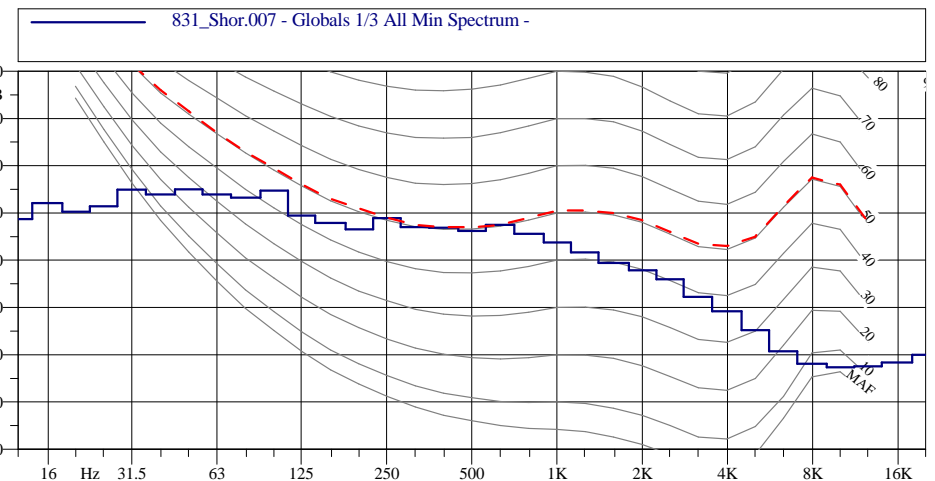
**Leq = 68.3 dBA**  
**L90 = 55.7 dBAF**  
**Lmin = 54.0 dBAF**



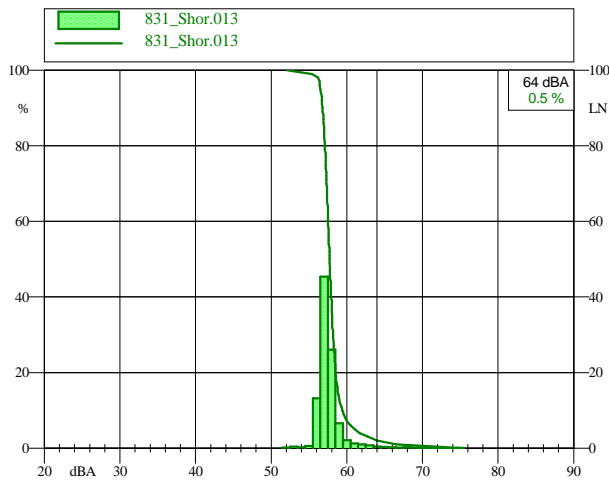
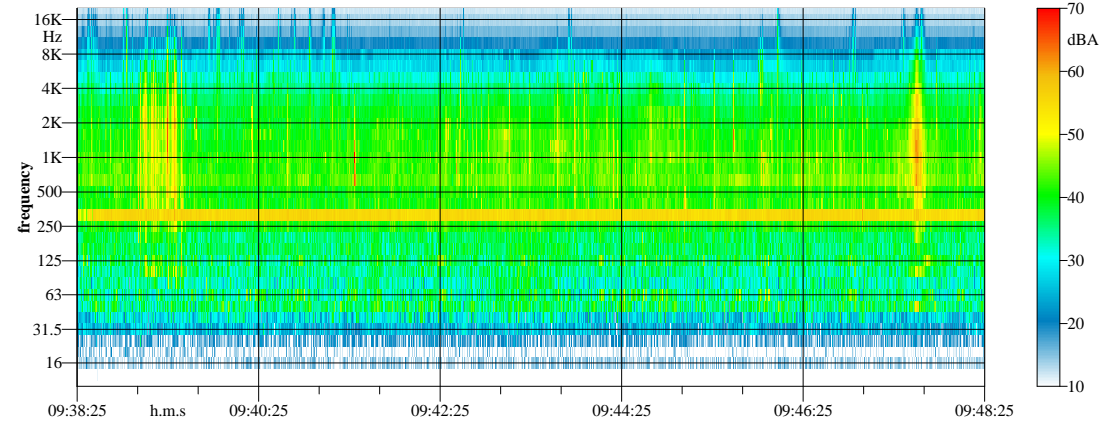
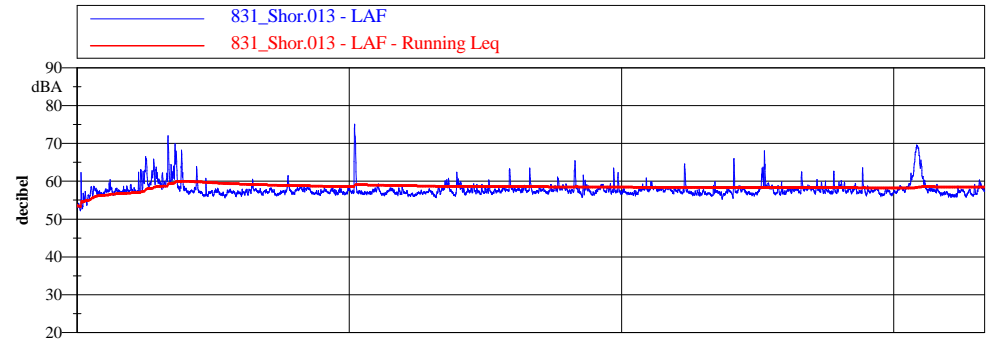
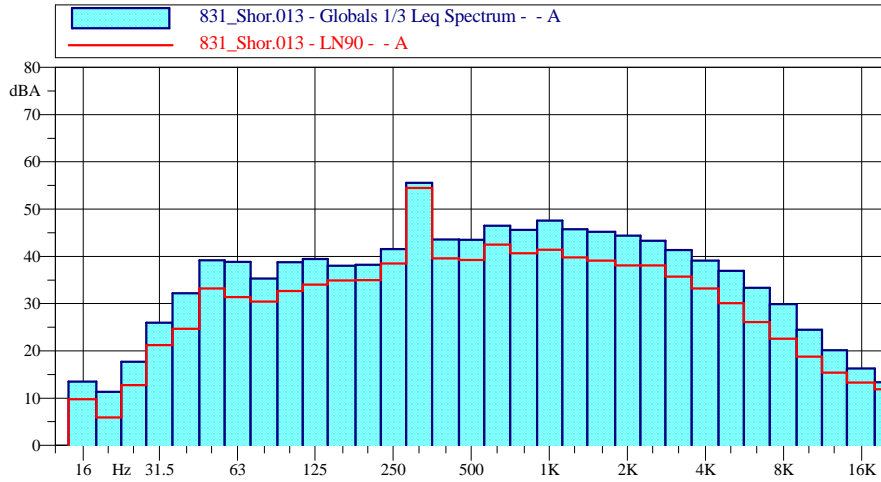
Postazione R11  
Rumore Ante Operam



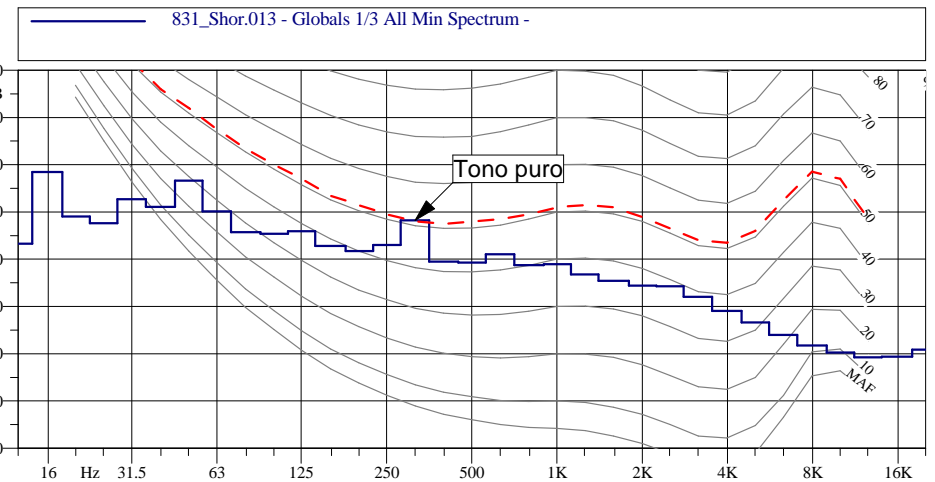
**Leq = 59.9 dBA**  
**L90 = 57.4 dBAF**  
**Lmin = 55.9 dBAF**



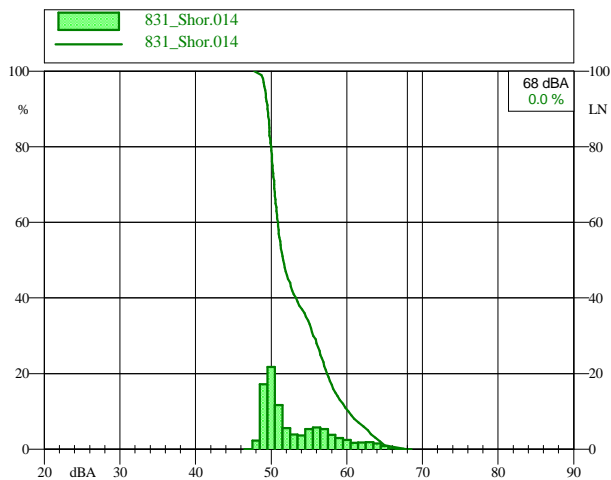
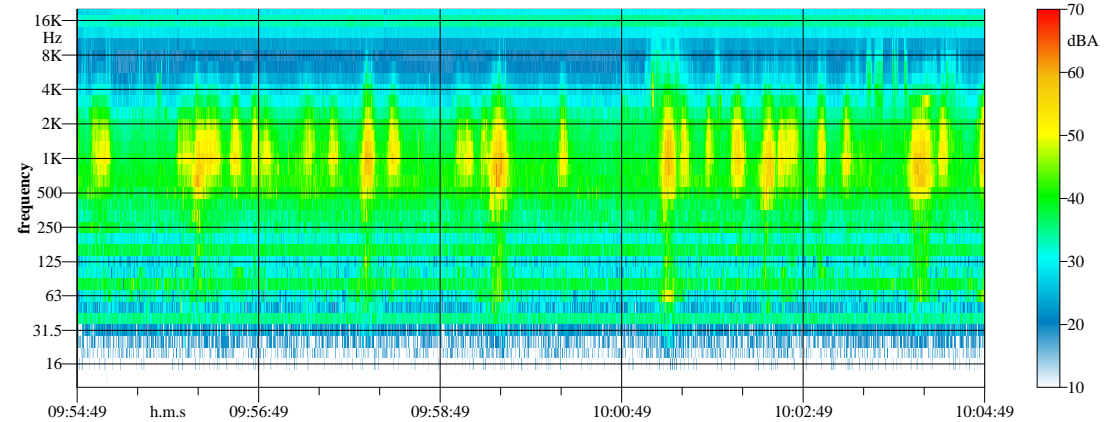
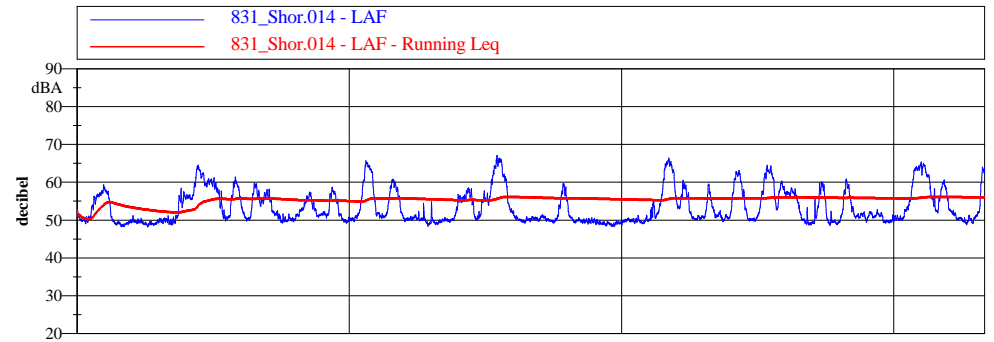
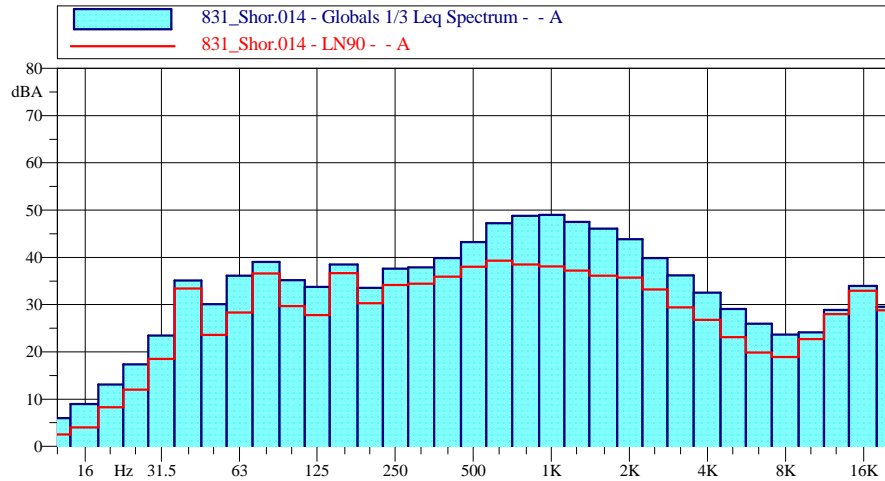
Postazione R12  
Rumore Ante Operam



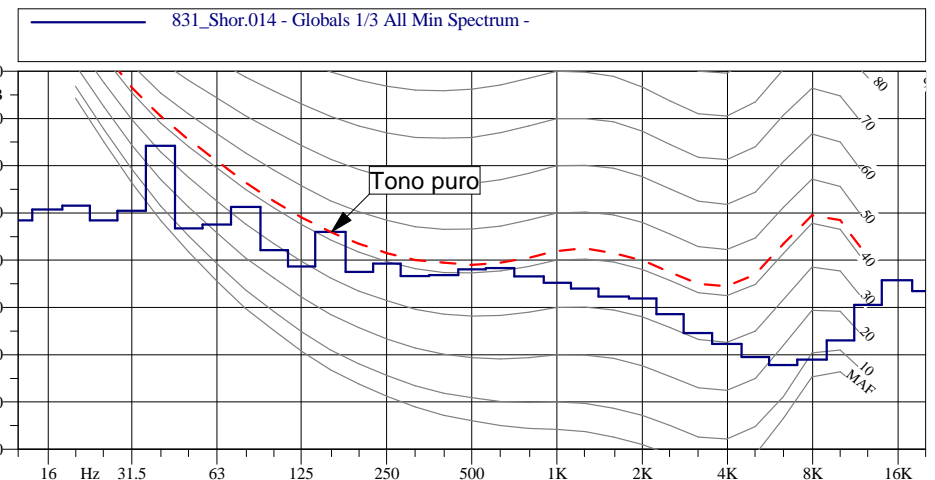
**Leq = 58.6 dBA**  
**L90 = 56.6 dBAF**  
**Lmin = 52.2 dBAF**



Postazione R13  
Rumore Ante Operam

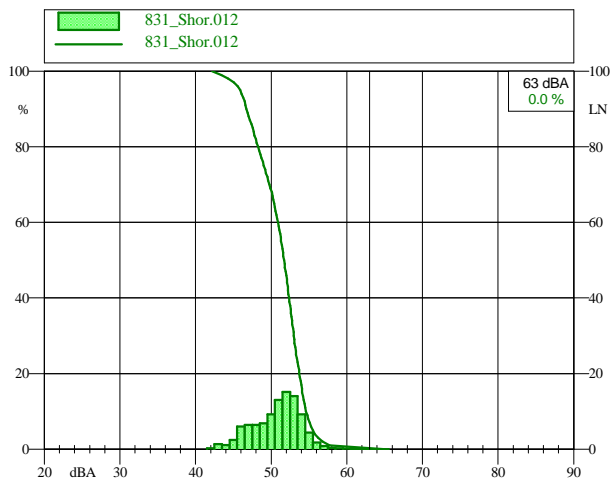
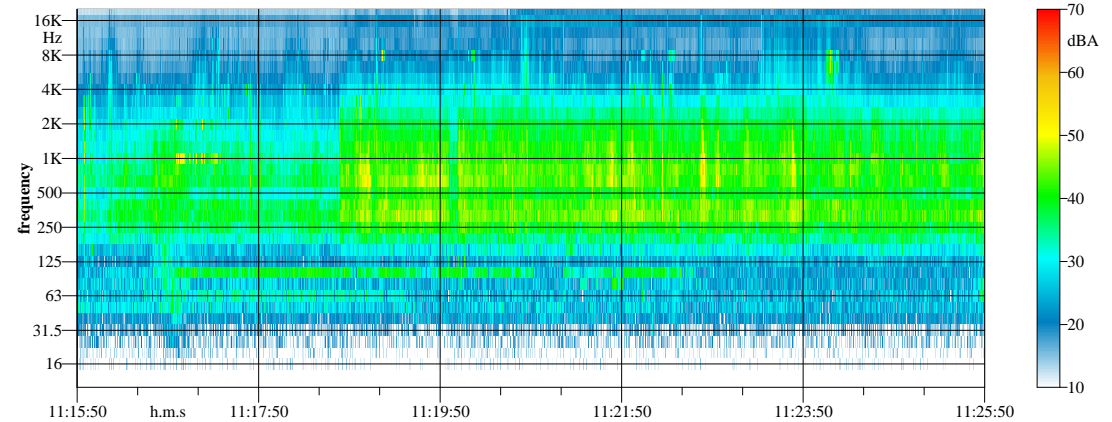
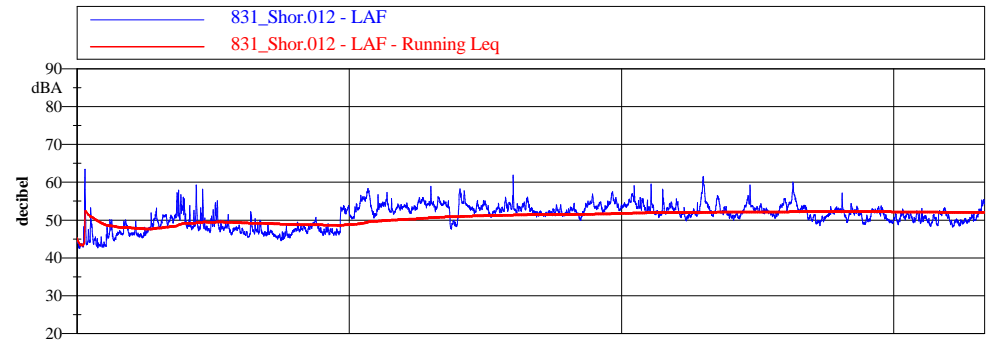
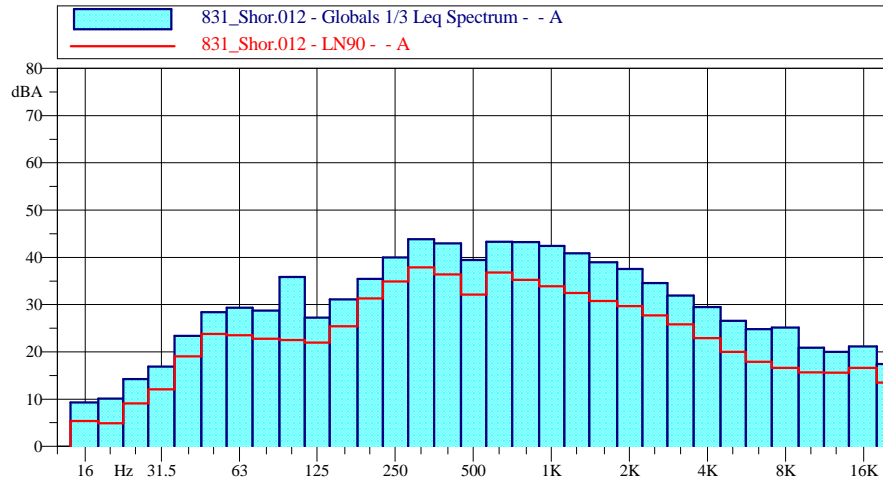


**Leq = 56.3 dBA**  
L90 = 49.4 dBAF  
Lmin = 48.1 dBAF

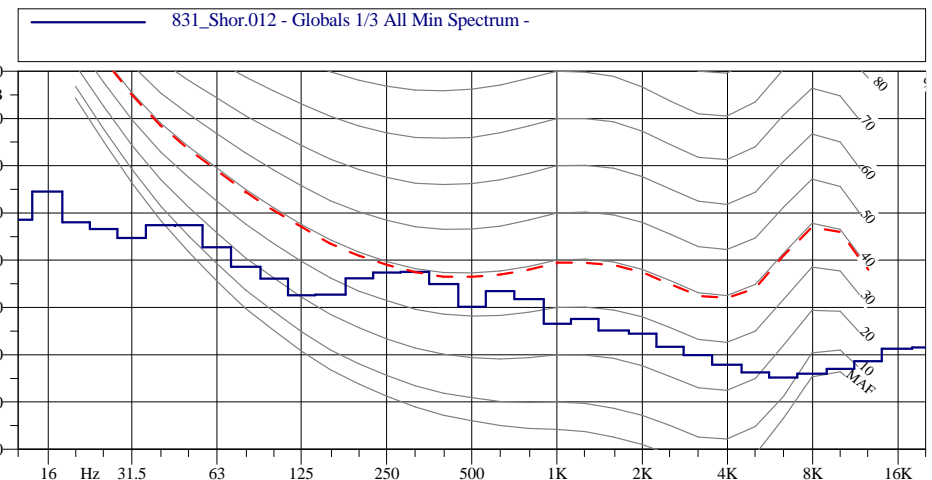




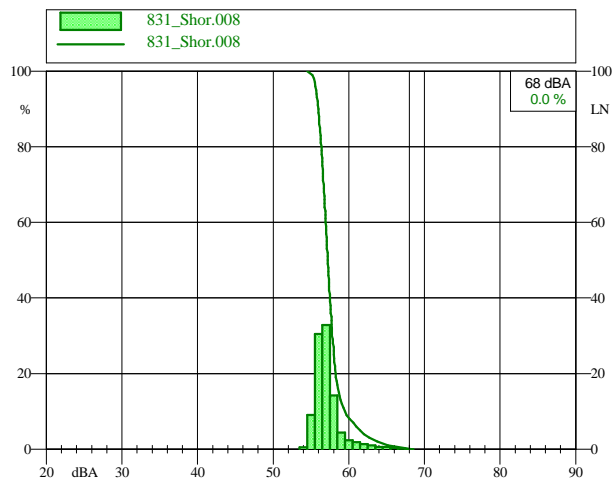
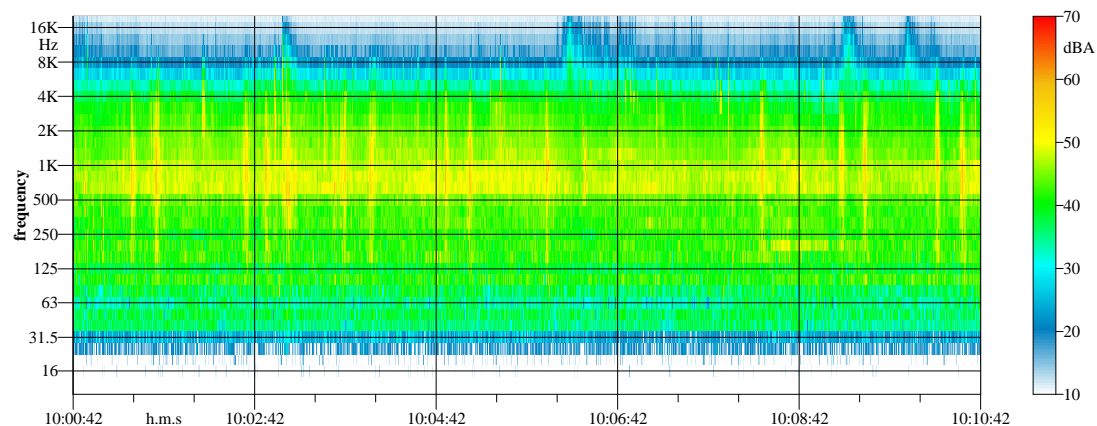
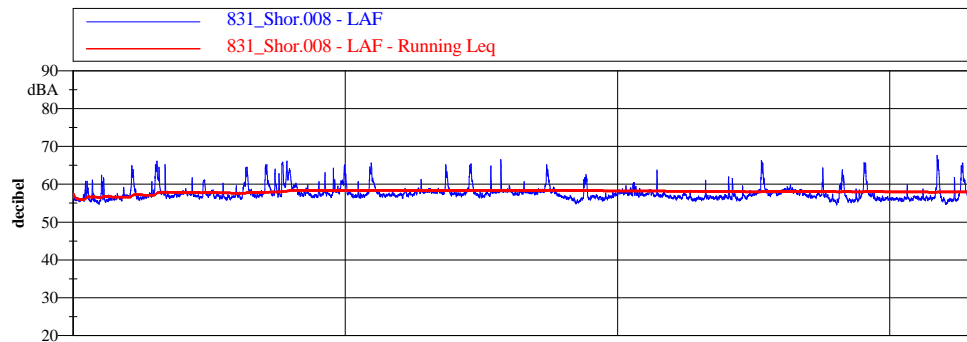
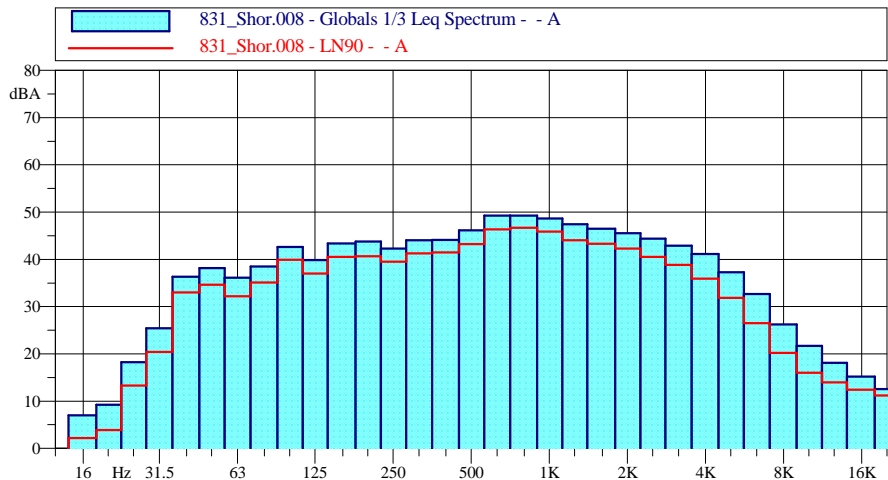
Postazione R14  
Rumore Ante Operam



**Leq = 52.2 dBA**  
L90 = 46.7 dBAF  
Lmin = 42.3 dBAF



Postazione R15  
Rumore Ante Operam



**Leq = 58.1 dBA**  
**L90 = 56.0 dBAF**  
**Lmin = 54.4 dBAF**

