

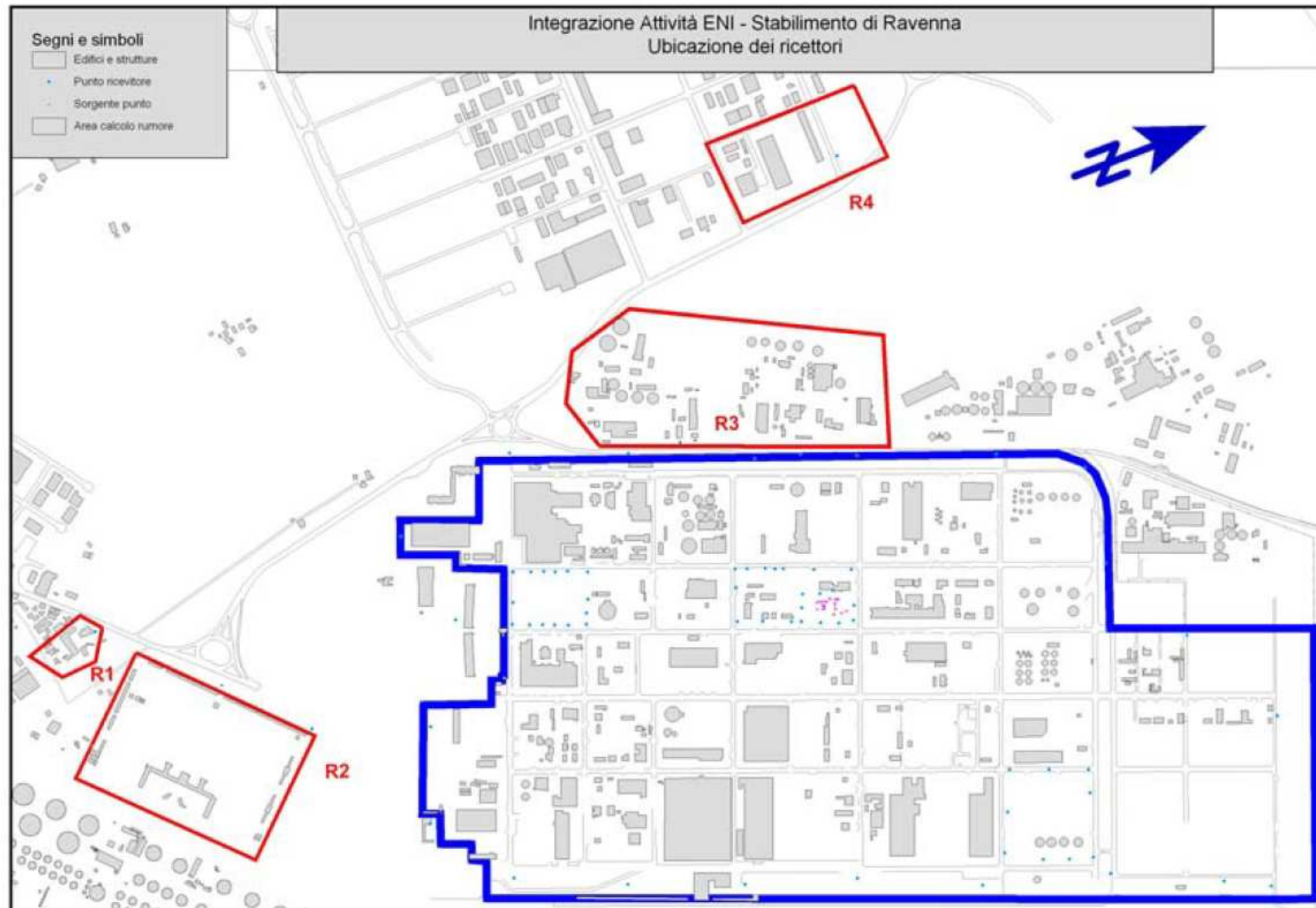
enipower
stabilimento di Ravenna

SOSTITUZIONE CALDAIA B400

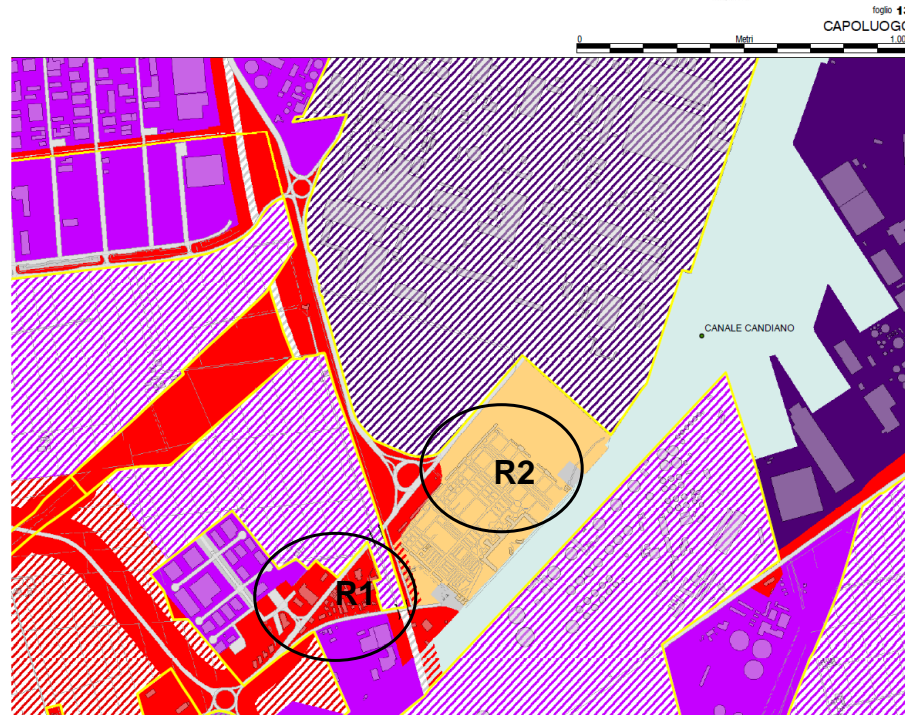
**campagna di rilevamento del rumore
Ante Operam
presso i Ricettori esterni allo stabilimento**

indagini fonometriche del 21 giugno 2011

Individuazione dei Ricettori



Estratto dalla Classificazione Acustica del Comune di Ravenna



LEGENDA

<p>Viabilità esistente Fasce di prospicienza</p> <ul style="list-style-type: none"> Classe IV-50 Metri (Strade A,B,C,D) Classe IV-30 Metri (Strade E,E-F) 	<p>Viabilità di progetto Fasce di prospicienza</p> <ul style="list-style-type: none"> Classe III - 50 metri (Strade E,E-F) Classe IV (Strade A,B,C,D) 	<p>Ferrovia</p> <ul style="list-style-type: none"> Classe IV - 50 metri 	<p>Darsena di città</p> <ul style="list-style-type: none"> Perimetro Darsena
<p>Stato Attuale</p> <ul style="list-style-type: none"> Classe I Classe II Classe III Classe IV Classe V Classe VI 	<p>Stato di Progetto</p> <ul style="list-style-type: none"> Classe I Classe II Classe III Classe IV Classe V Classe VI 	<ul style="list-style-type: none"> Allevamenti Scuole Strutture sanitarie 	<ul style="list-style-type: none"> Ambiti soggetti a POC

Caratterizzazione dei Ricettori R1 e R2



Ricettore R2

Posizione
N 44°26.367'
E 12°14.059'

Classe Acustica III

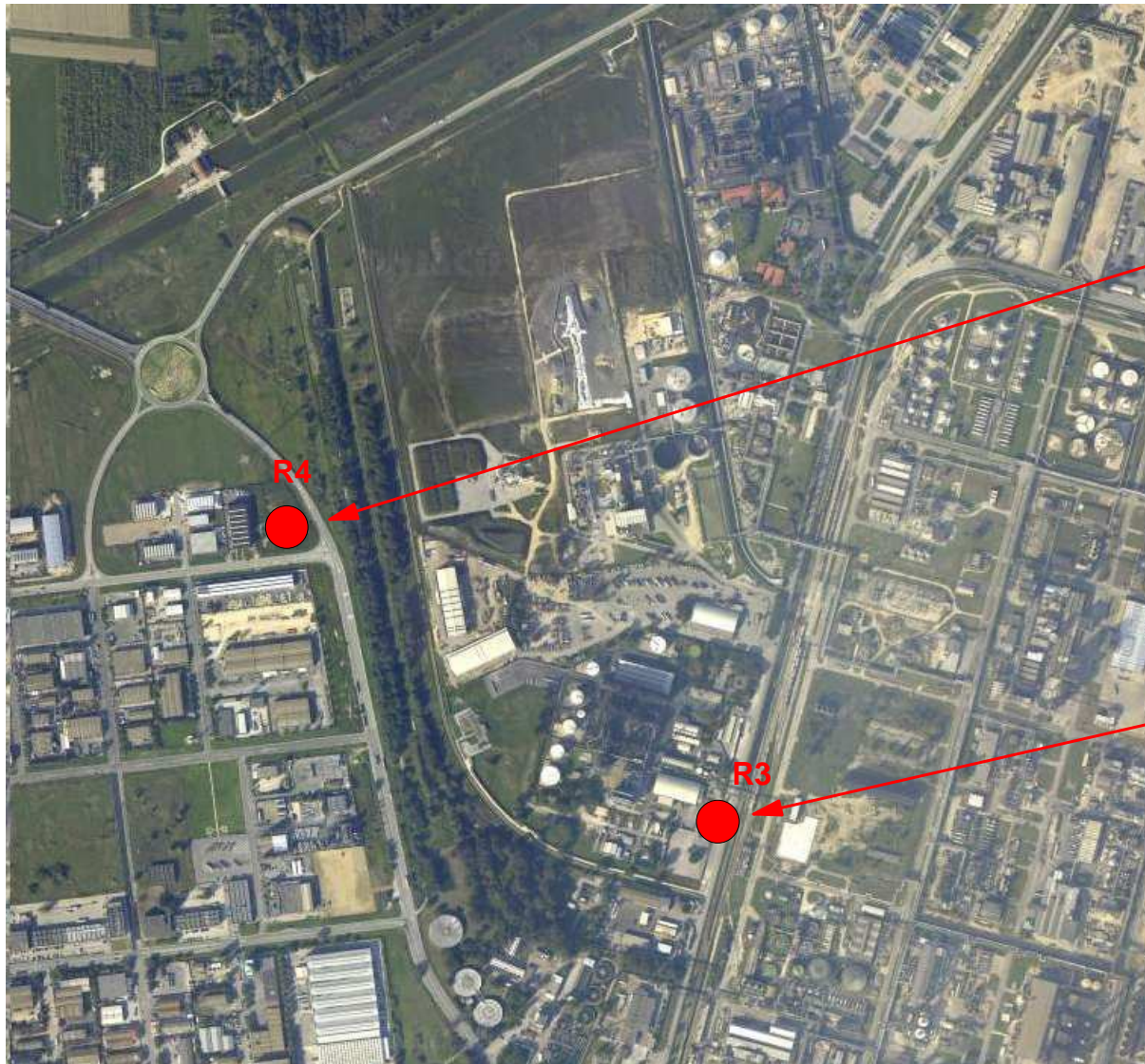


Ricettore R1

Posizione
N 44°26.097'
E 12°13.728'

Classe Acustica IV

Caratterizzazione dei Ricettori R3 e R4



Ricettore R4 Posizione Classe Acustica V
N 44°27.270'
E 12°13.294'



Ricettore R3 Posizione Classe Acustica VI
N 44°26.966'
E 12°13.729'

Limiti di Zona

Classi di destinazione d'uso del territorio		Valori limite delle sorgenti sonore (DPCM 14/11/97) Leg in dB(A)									
		emissione		immissione		qualità		attenzione			
		diurno	nott.	diurno	nott.	diurno	nott.	diurno	nott.	diurno orario	nott. orario
I	aree particolarmente protette	45	35	50	40	47	37	50	40	60	45
II	aree prevalentemente residenziali	50	40	55	45	52	42	55	45	65	50
III	aree di tipo misto	55	45	60	50	57	47	60	50	70	55
IV	aree di intensa attività umana	60	50	65	55	62	52	65	55	75	60
V	aree prevalentemente industriali	65	55	70	60	67	57	70	60	80	65
VI	aree esclusivamente industriali	65	65	70	70	70	70	70	70	80	75

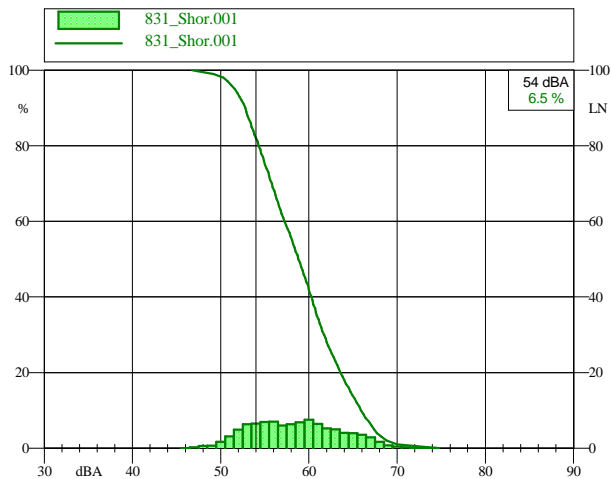
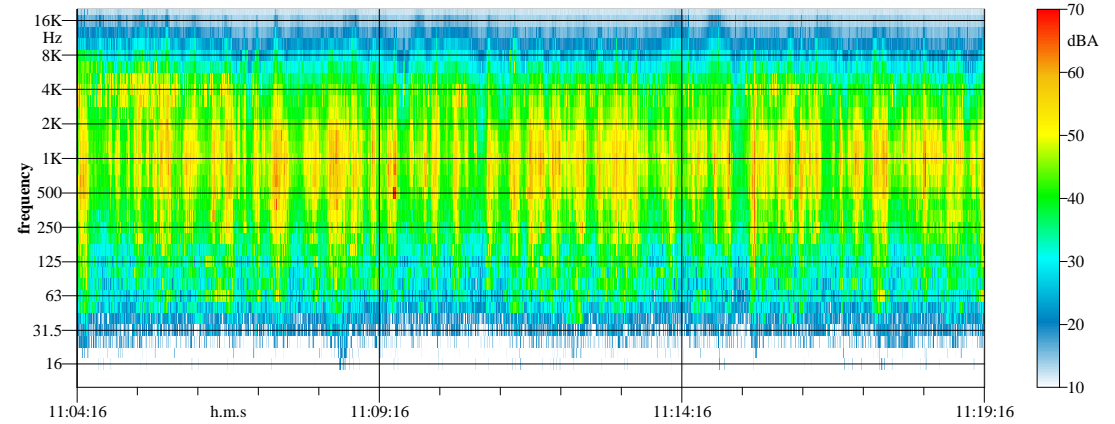
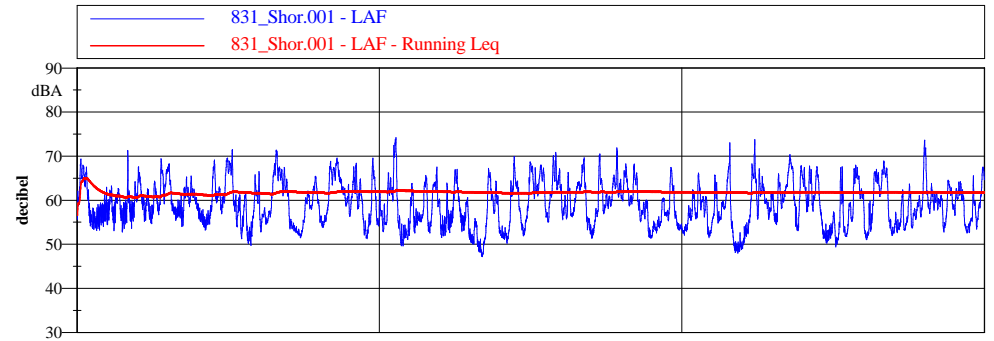
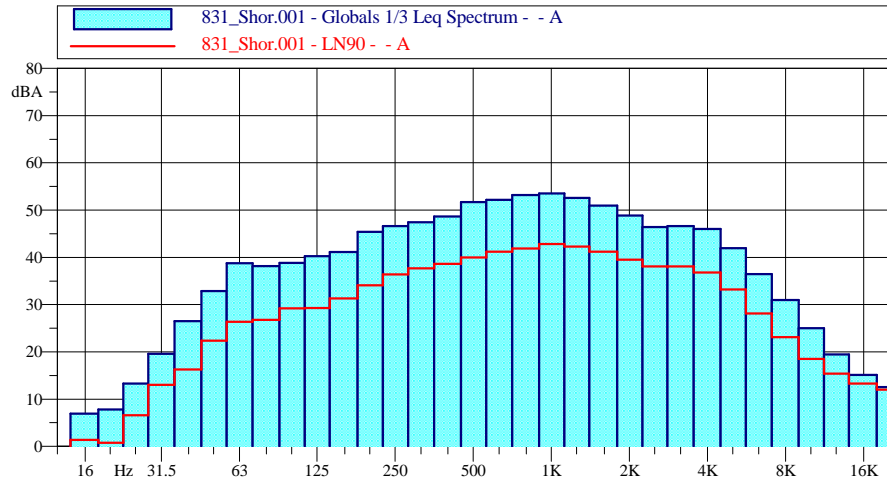
Sintesi dei Risultati dei Rilevamenti Fonometrici

ricettore classe acustica	R1		R2		R3		R4	
	IV		III		VI		V	
indicatore	LAeq	LAF90	LAeq	LAF90	LAeq	LAF90	LAeq	LAF90
1^ diurna	62.0	53.0	54.0	50.0	69.5	65.0	63.0	54.5
2^ diurna	62.0	53.0	54.0	49.5	69.5	63.5	62.5	55.0
livello diurno	62.0	53.0	54.0	50.0	69.5	64.5	63.0	55.0
livello notturno	48.0	42.5	48.0	45.5	64.5	59.5	54.5	52.3

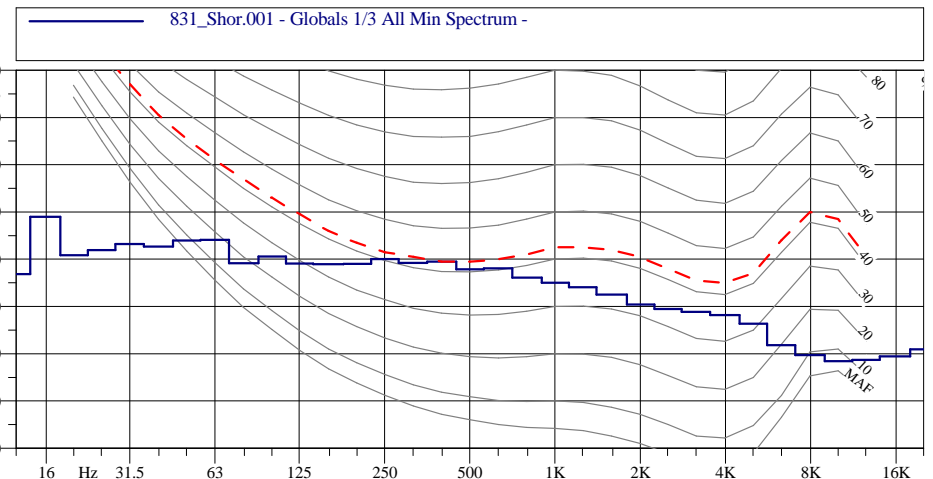
dB project

Studio Tecnico di Ingegneria, Acustica e Vibrazioni

Ricettore R1
Rumore Ante Operam - 1^a misura in Diurno



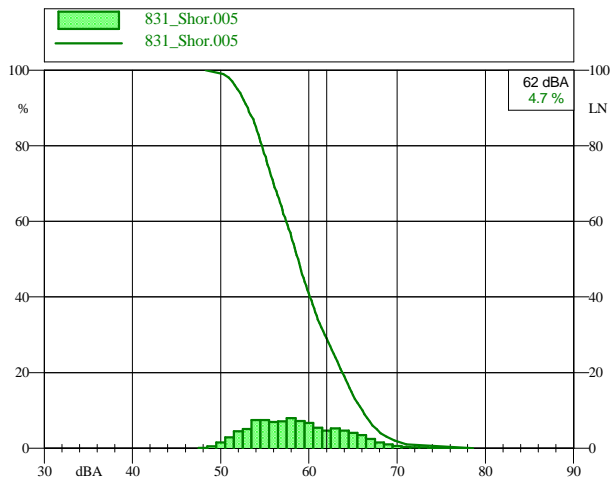
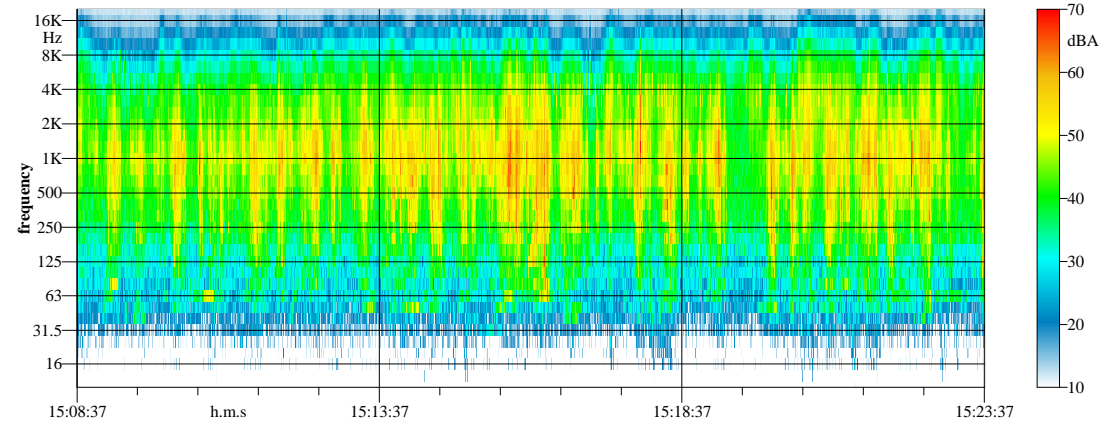
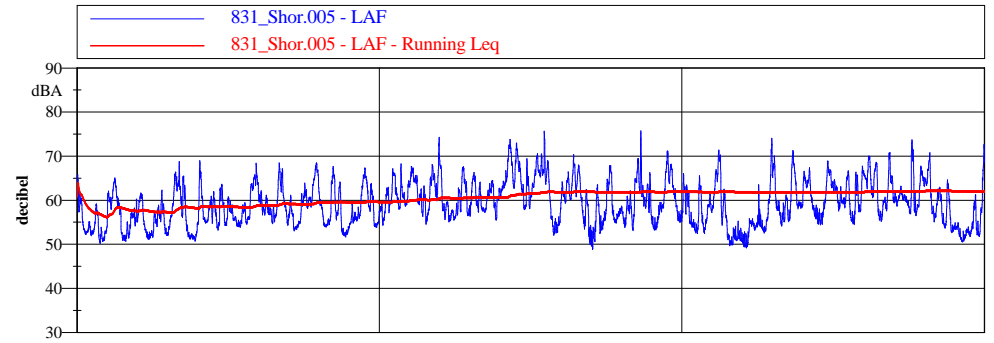
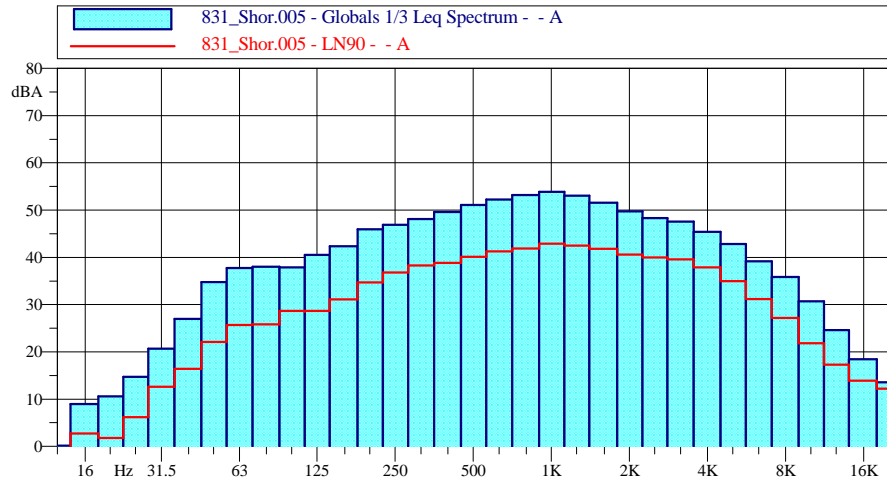
Leq = 61.8 dBA
L90 = 52.9 dBAF
Lmin = 46.9 dBAF



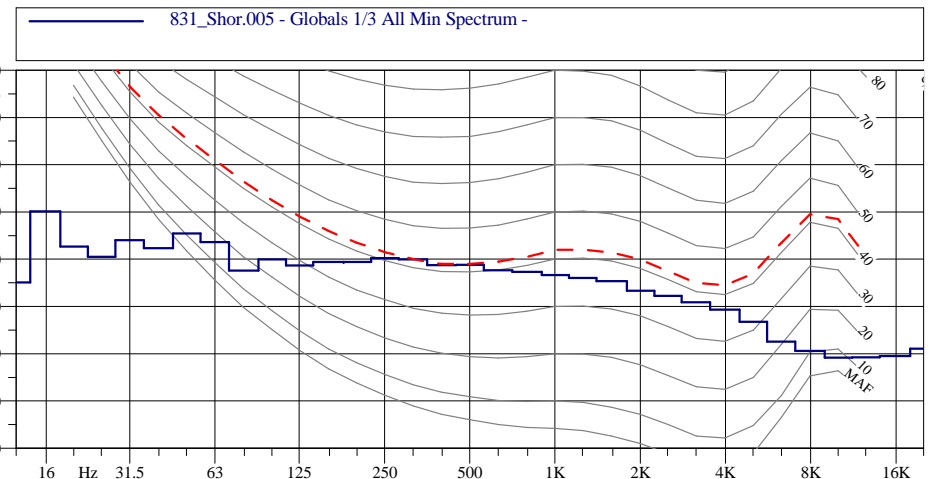
dB project

Studio Tecnico di Ingegneria, Acustica e Vibrazioni

Ricettore R1
Rumore Ante Operam - 2^a misura in Diurno



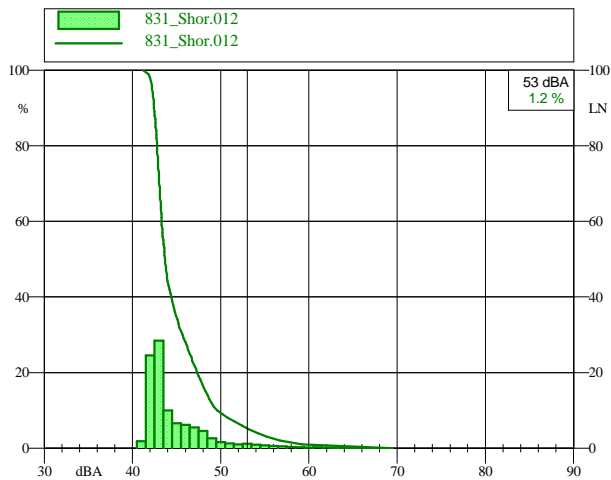
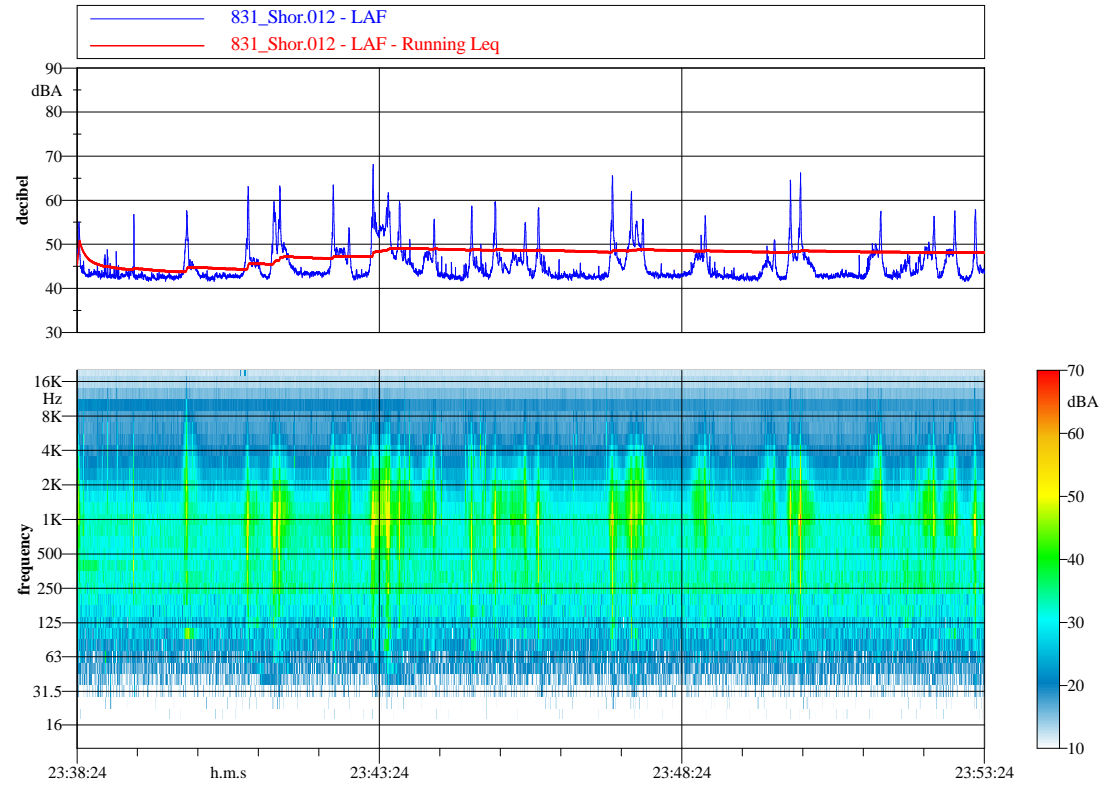
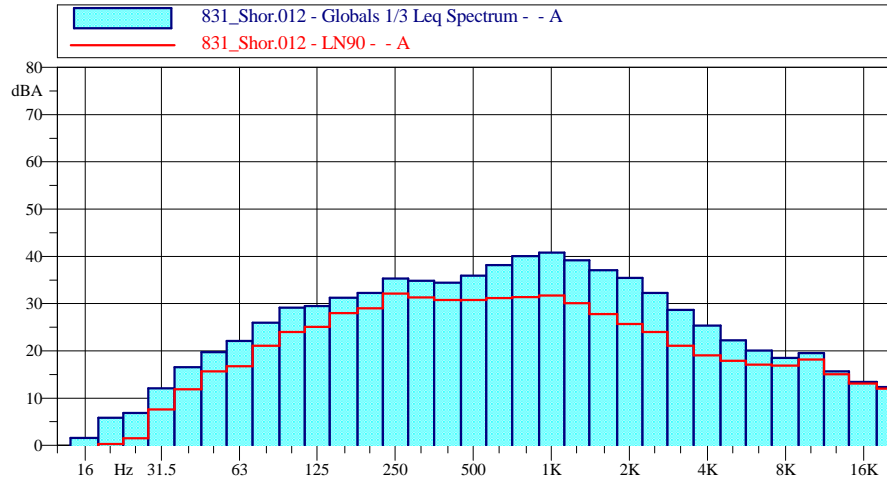
Leq = 62.2 dBA
L90 = 53.1 dBAF
Lmin = 48.7 dBAF



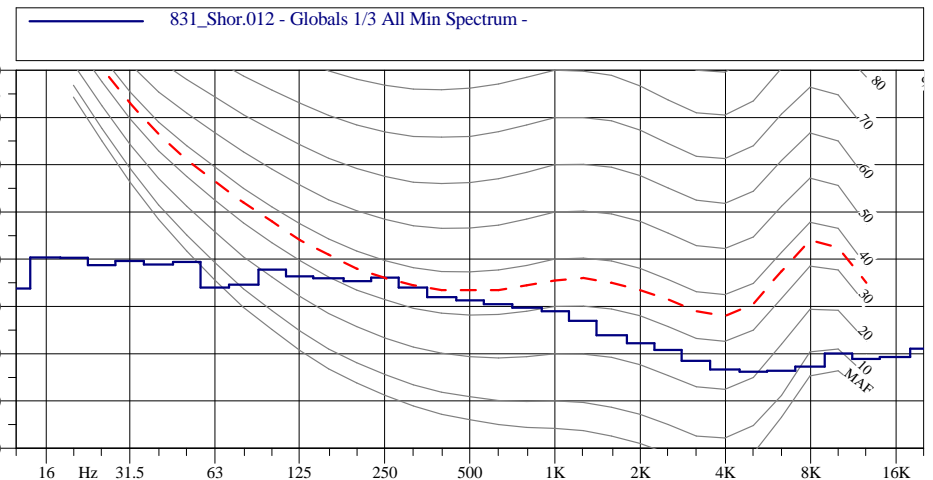
dB project

Studio Tecnico di Ingegneria, Acustica e Vibrazioni

Ricettore R1
Rumore Ante Operam - misura in Notturmo



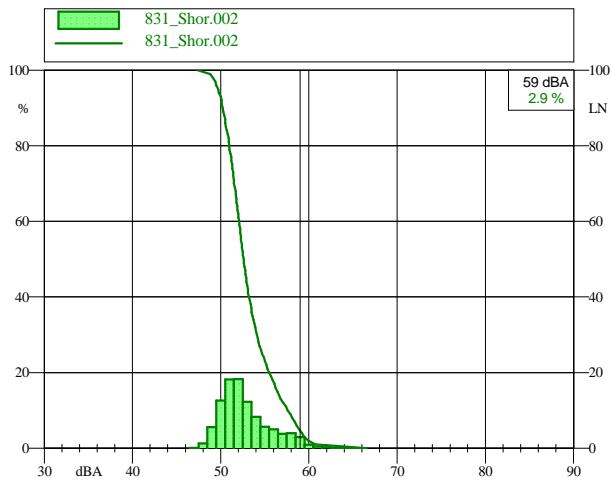
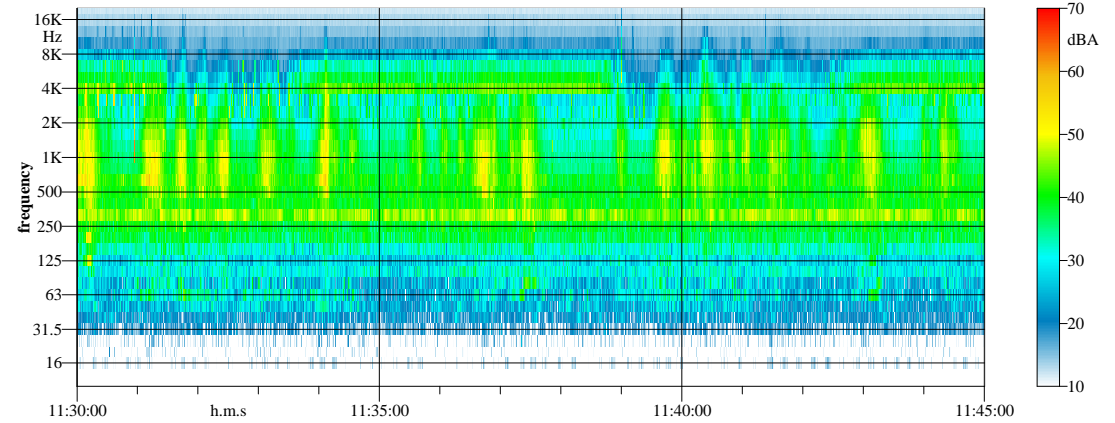
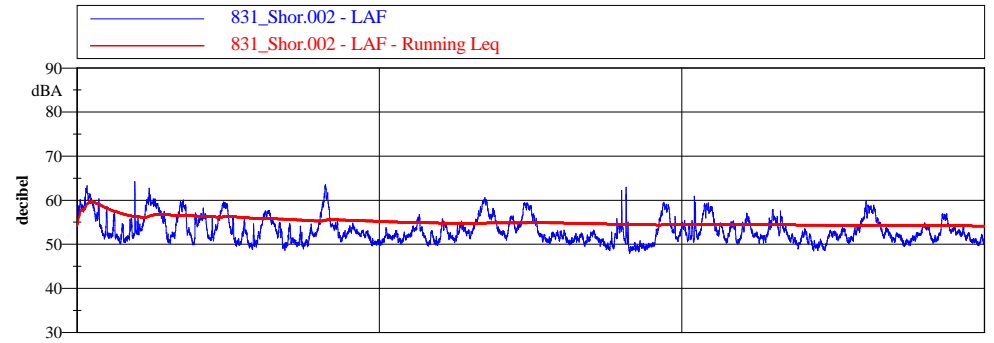
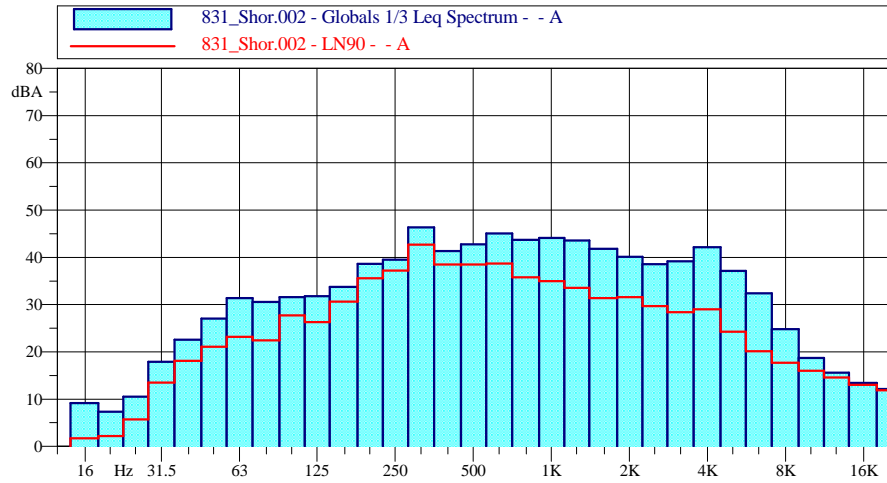
Leq = 48.2 dBA
L90 = 42.5 dBAF
Lmin = 41.3 dBAF



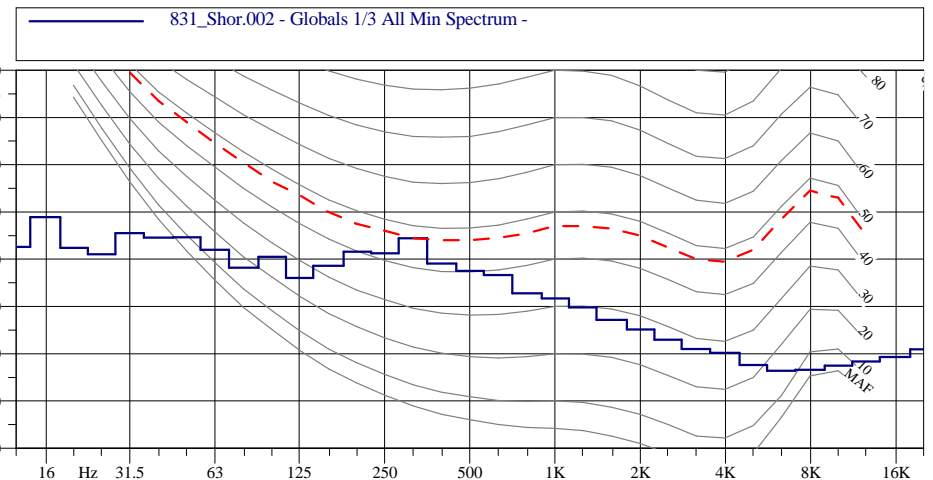
dB project

Studio Tecnico di Ingegneria, Acustica e Vibrazioni

Ricettore R2
Rumore Ante Operam - 1^a misura in Diurno



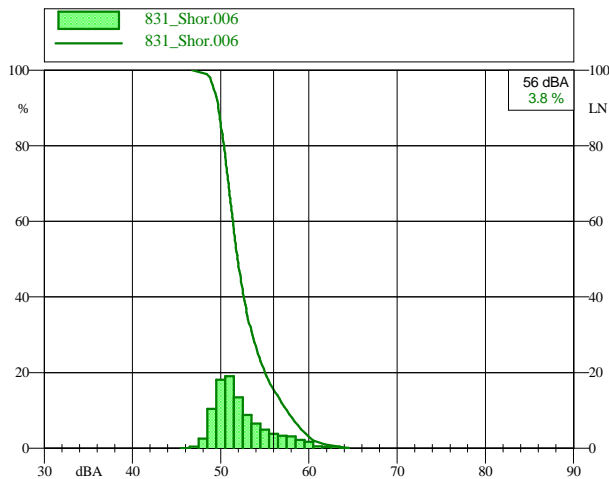
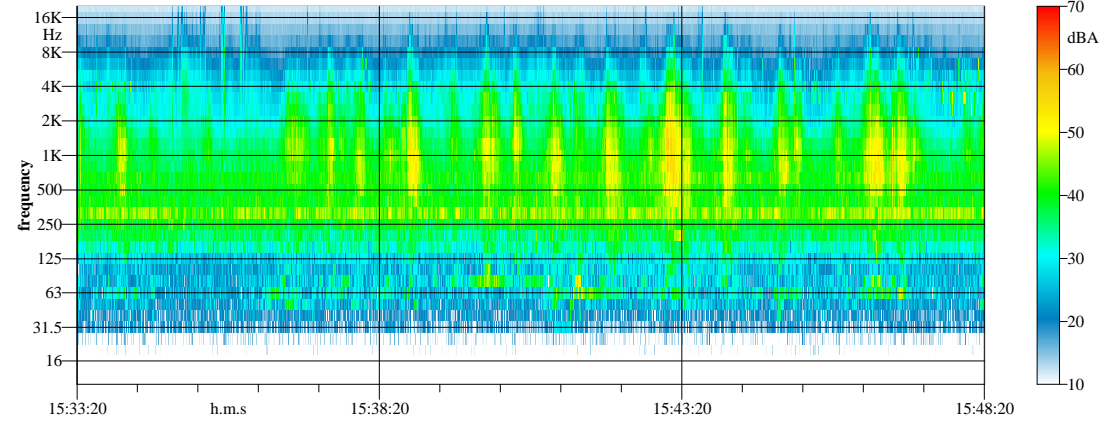
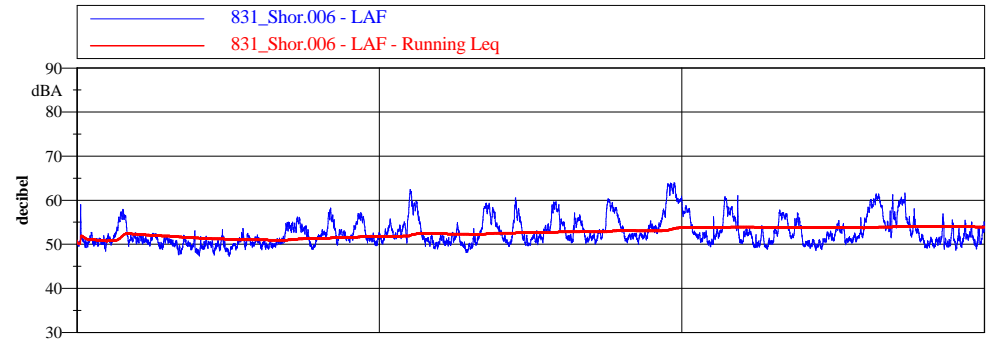
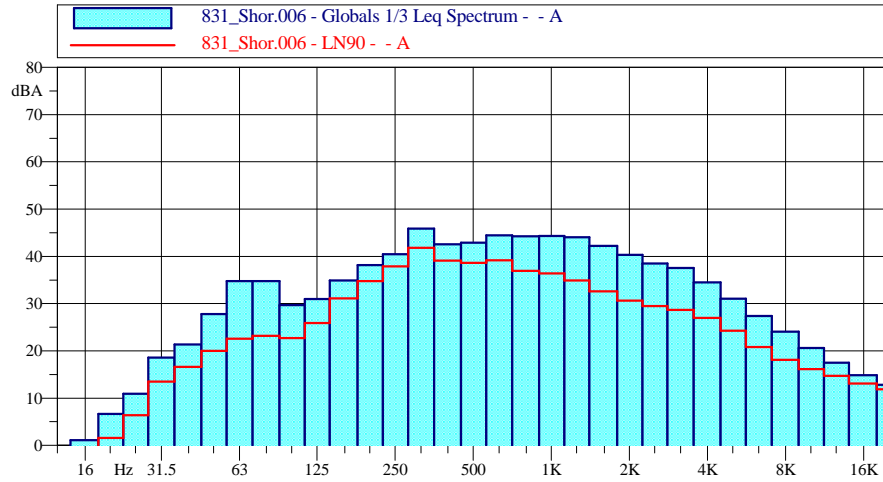
Leq = 54.2 dBA
L90 = 50.2 dBAF
Lmin = 47.7 dBAF



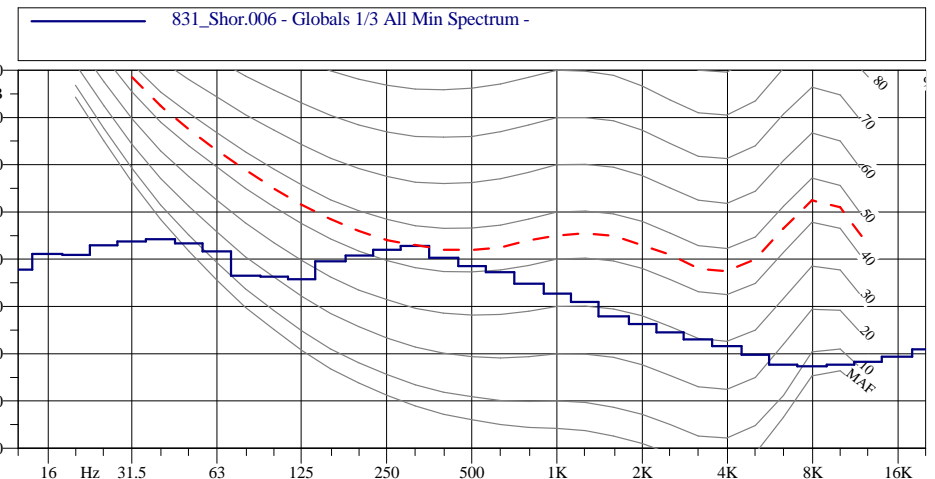
dB project

Studio Tecnico di Ingegneria, Acustica e Vibrazioni

Ricettore R2
Rumore Ante Operam - 2^a misura in Diurno



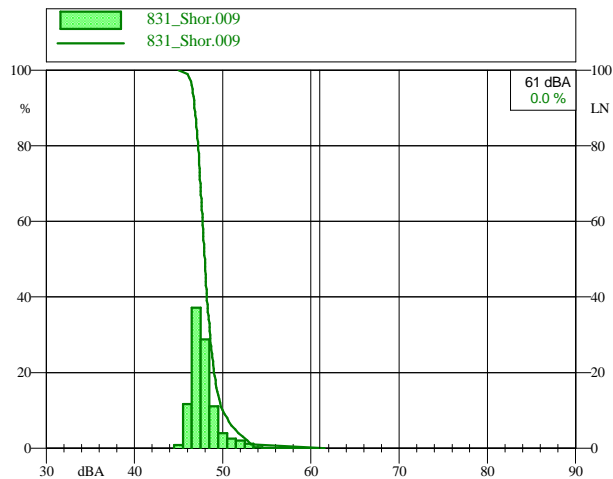
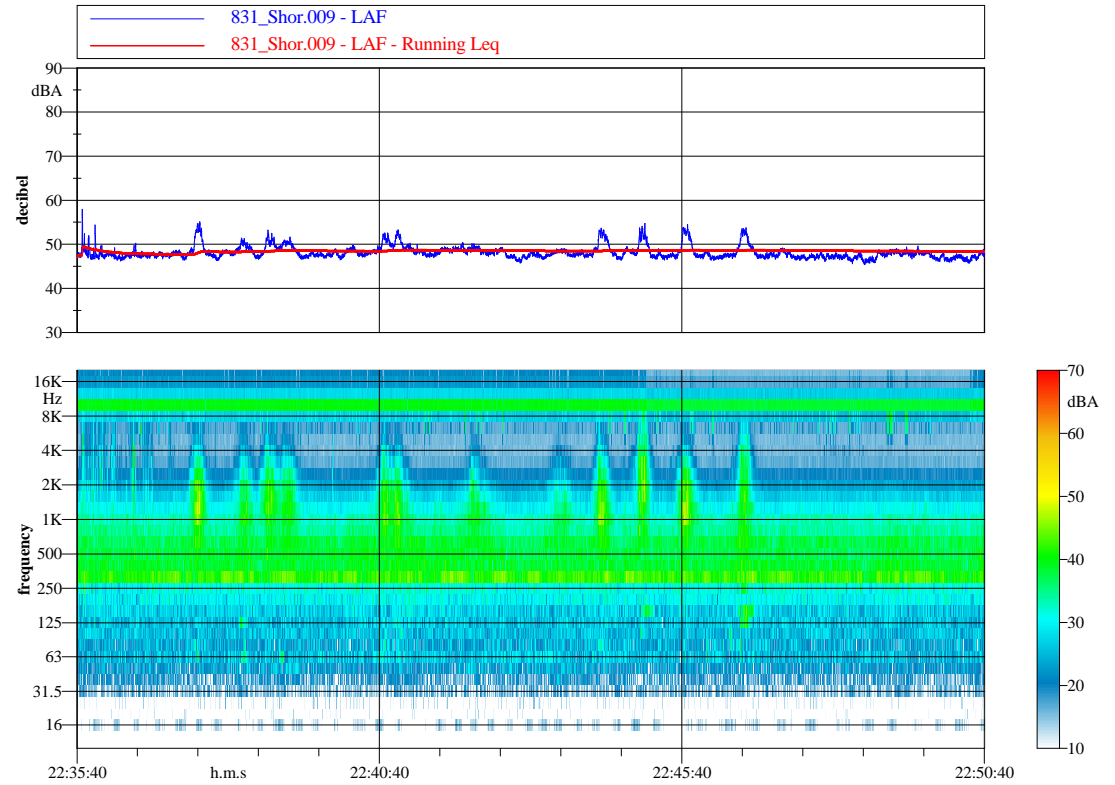
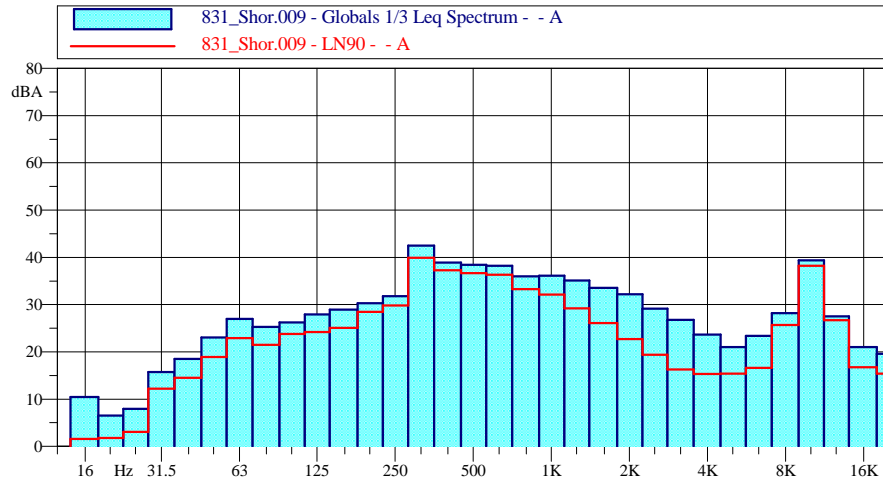
Leq = 54.1 dBA
L90 = 49.7 dBAF
Lmin = 47.0 dBAF



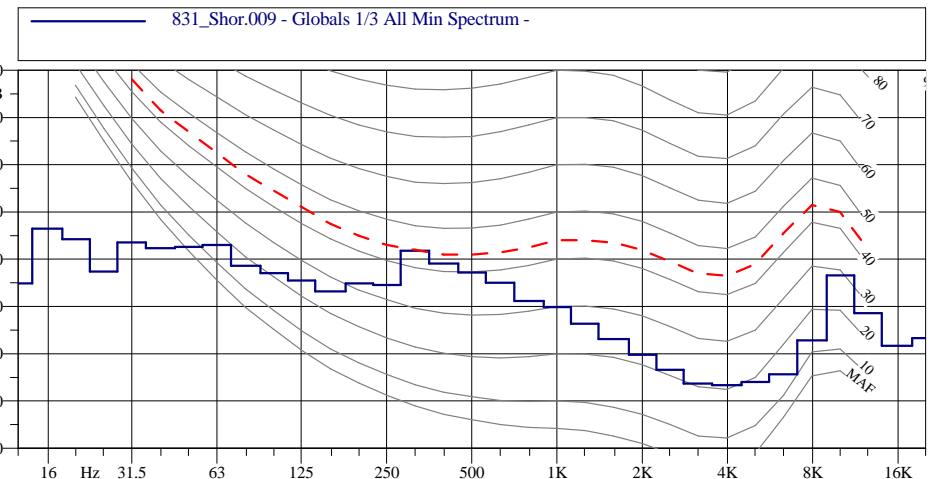
dB project

Studio Tecnico di Ingegneria, Acustica e Vibrazioni

Ricettore R2
Rumore Ante Operam - misura in Notturmo



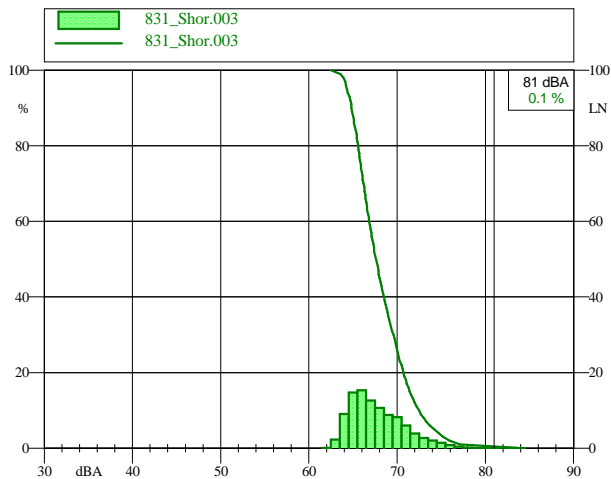
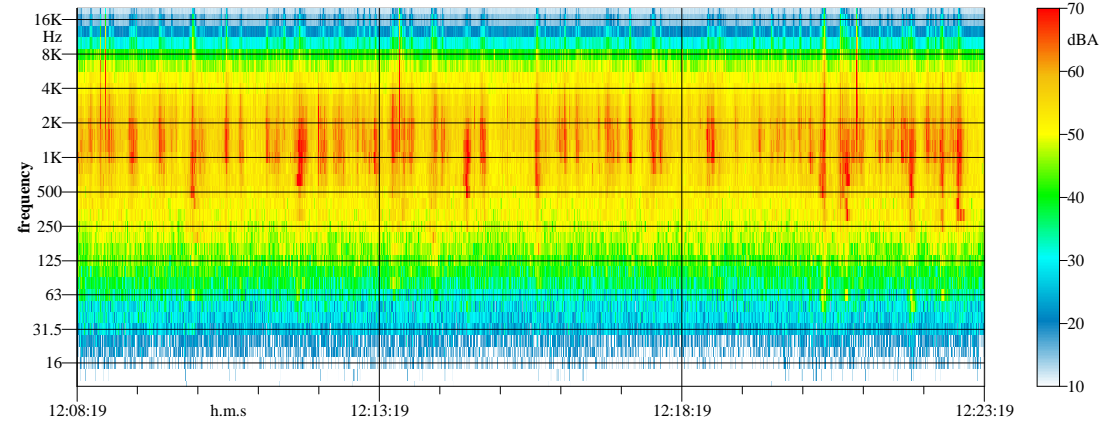
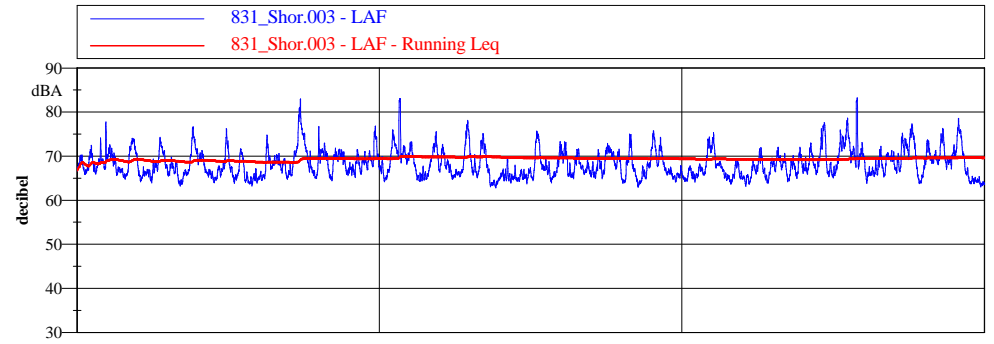
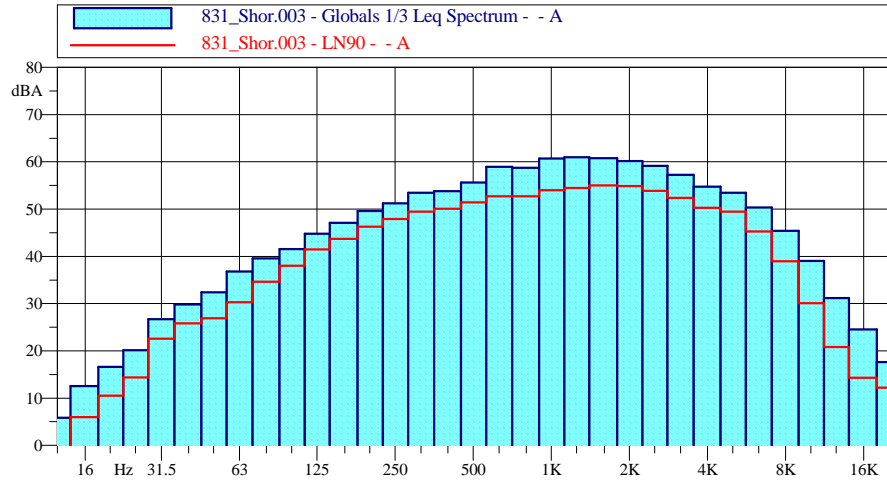
Leq = 48.4 dBA
L90 = 46.9 dBAF
Lmin = 45.3 dBAF



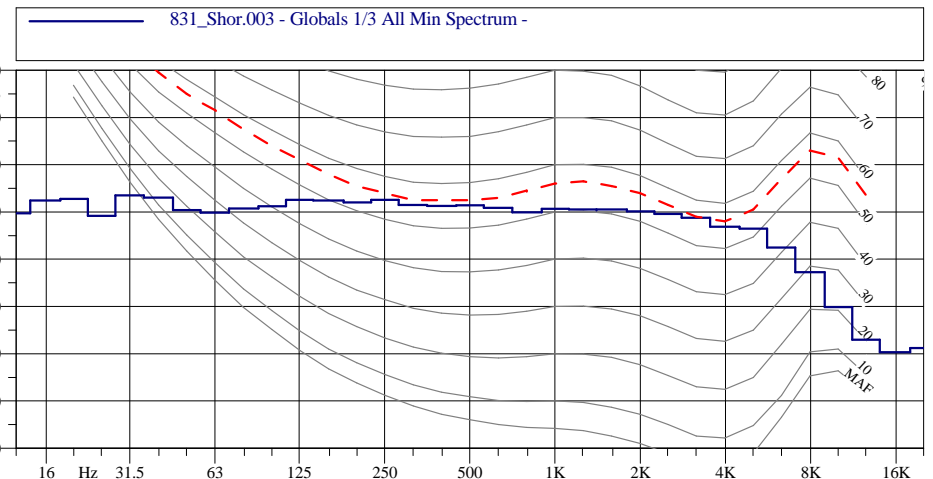
dB project

Studio Tecnico di Ingegneria, Acustica e Vibrazioni

Ricettore R3
Rumore Ante Operam - 1^a misura in Diurno



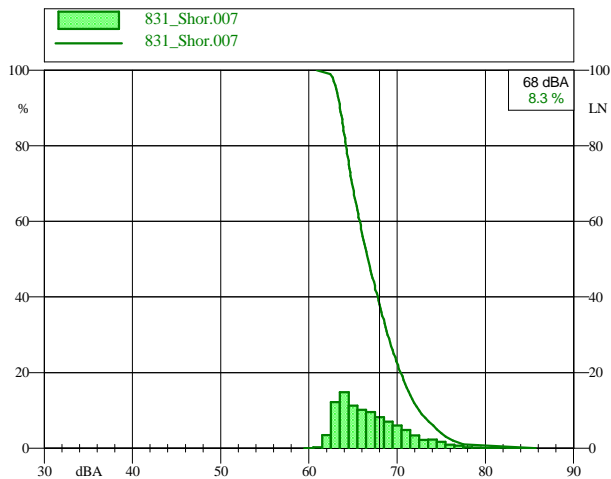
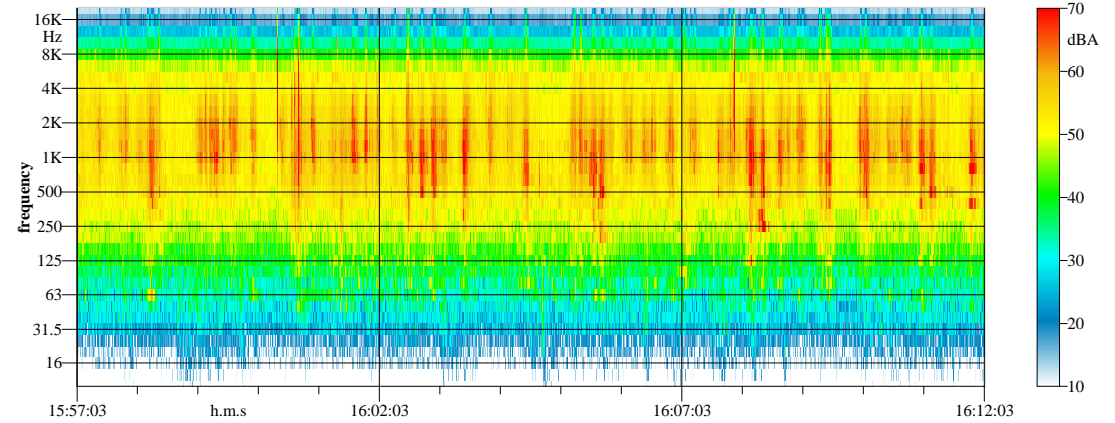
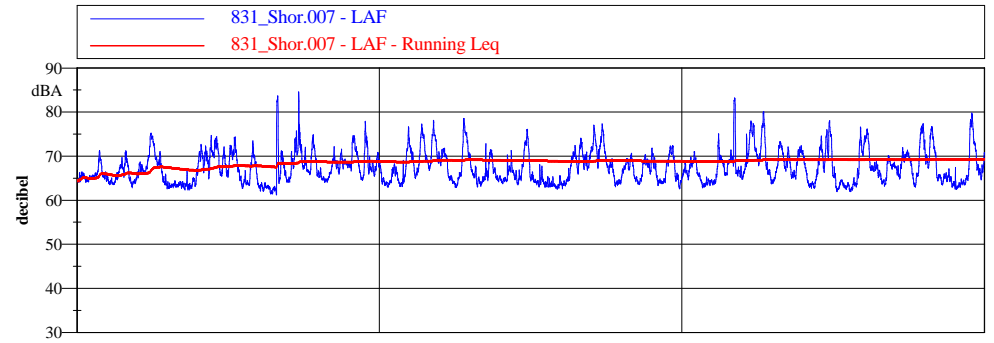
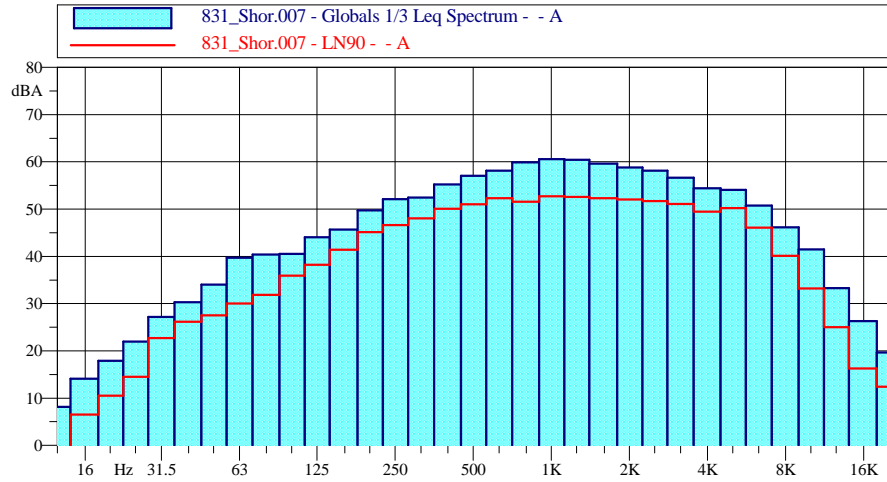
Leq = 69.7 dBA
L90 = 64.9 dBAF
Lmin = 62.9 dBAF



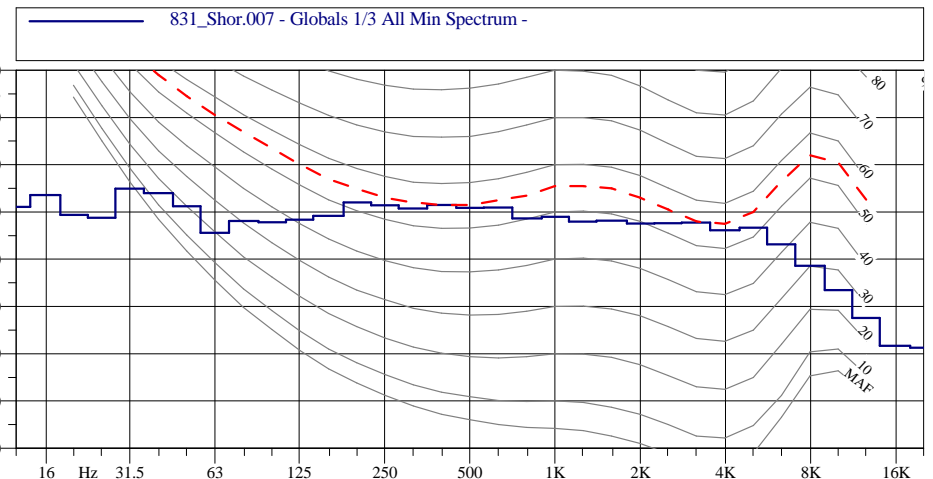
dB project

Studio Tecnico di Ingegneria, Acustica e Vibrazioni

Ricettore R3
Rumore Ante Operam - 2^a misura in Diurno



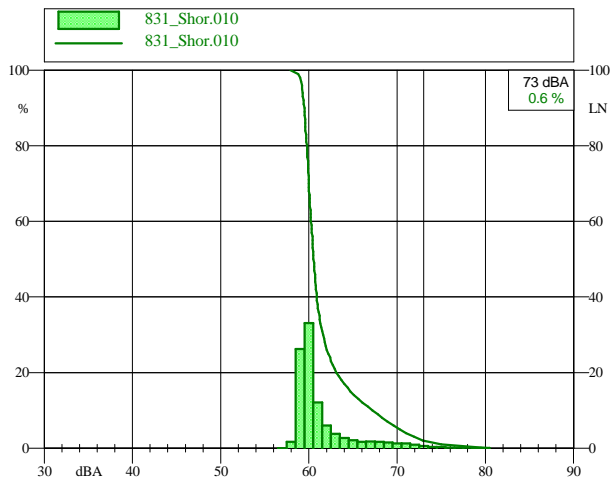
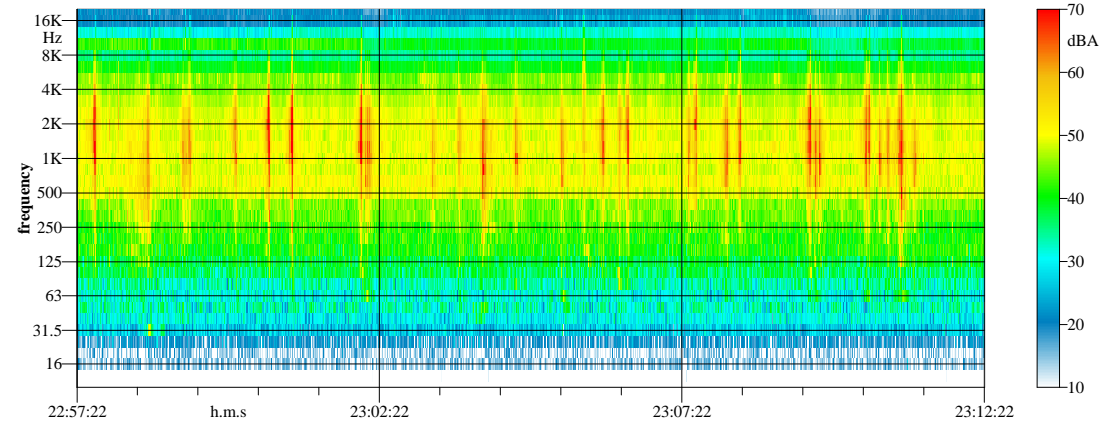
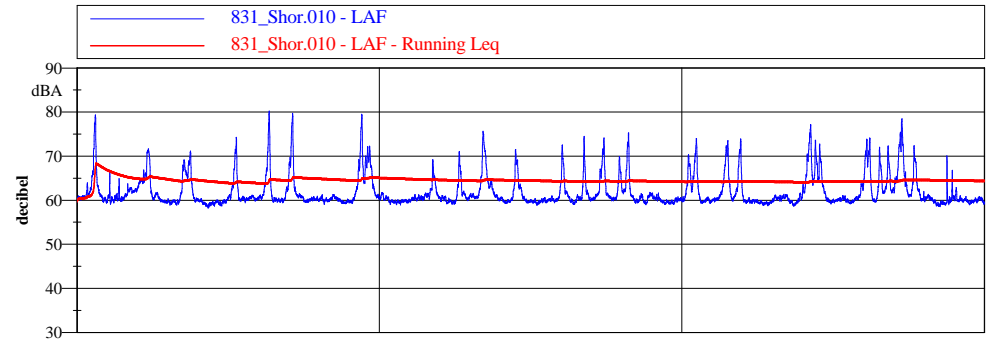
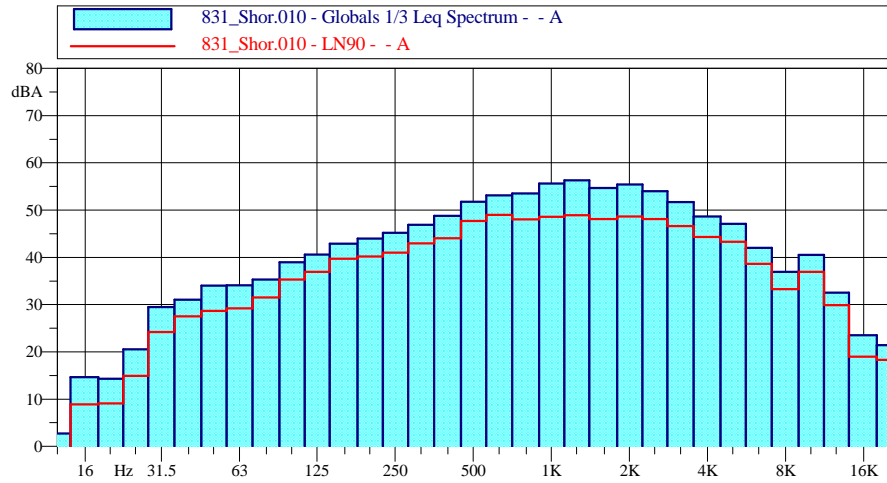
Leq = 69.4 dBA
L90 = 63.6 dBAF
Lmin = 61.1 dBAF



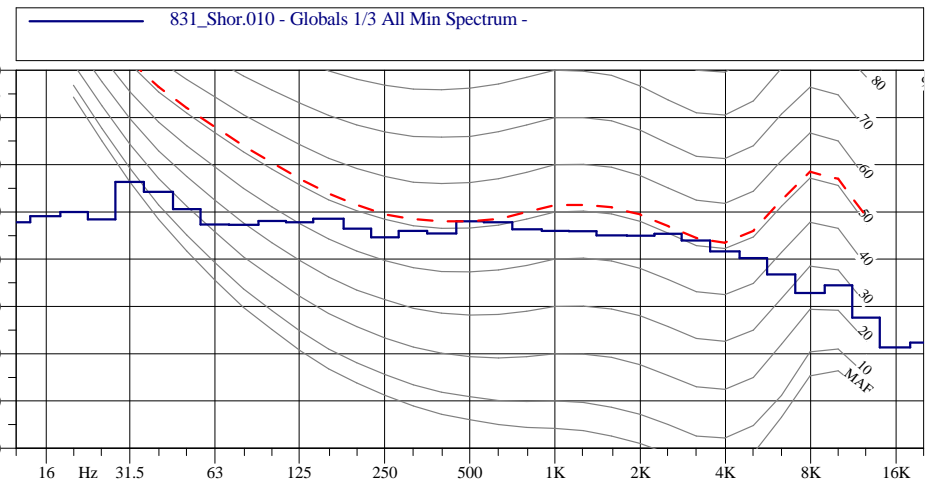
dB project

Studio Tecnico di Ingegneria, Acustica e Vibrazioni

Ricettore R3
Rumore Ante Operam - misura in Notturno



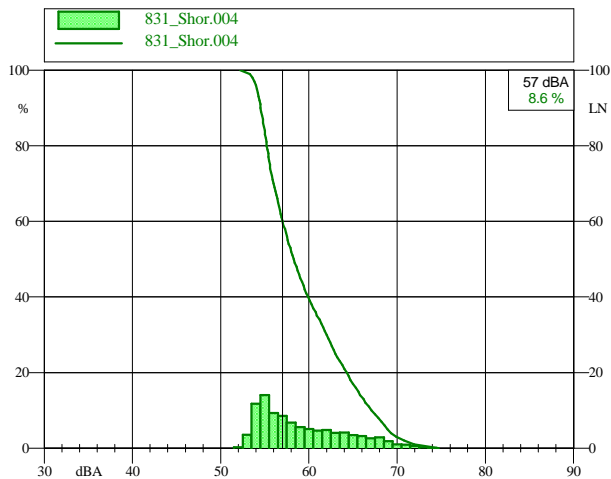
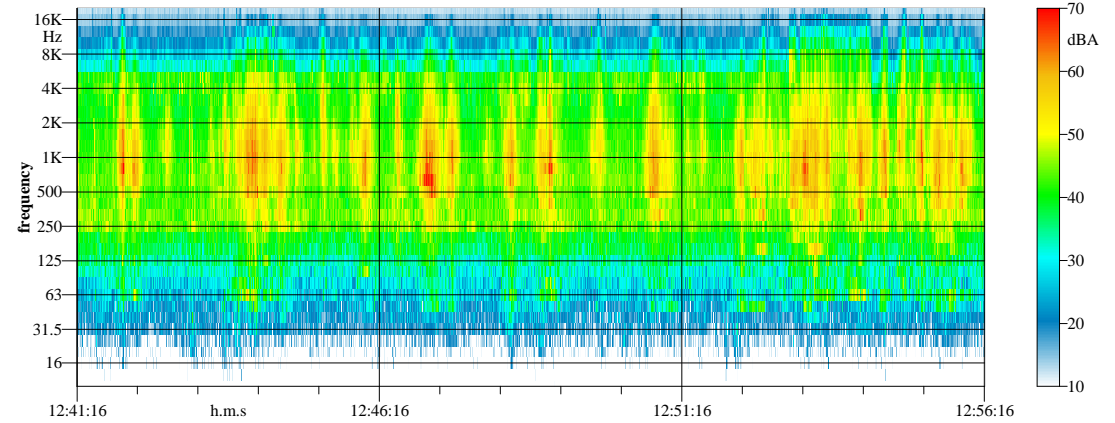
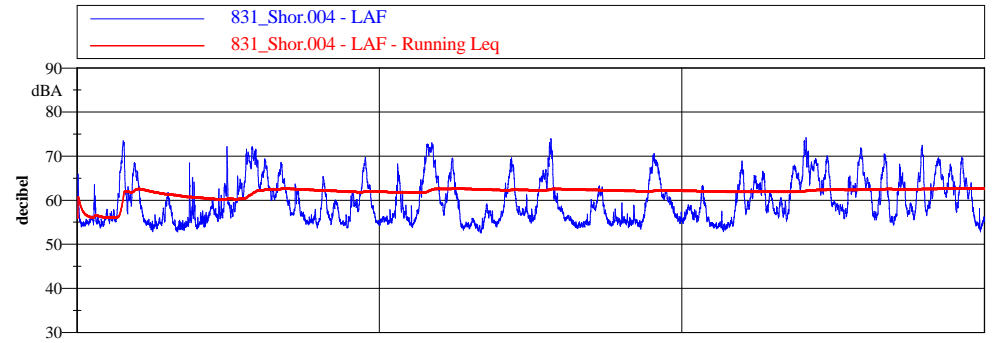
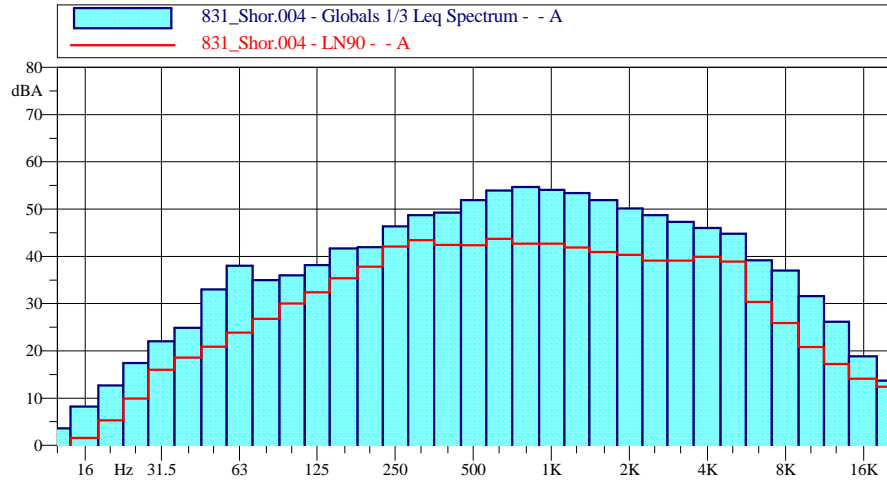
Leq = 64.5 dBA
L90 = 59.5 dBAF
Lmin = 58.2 dBAF



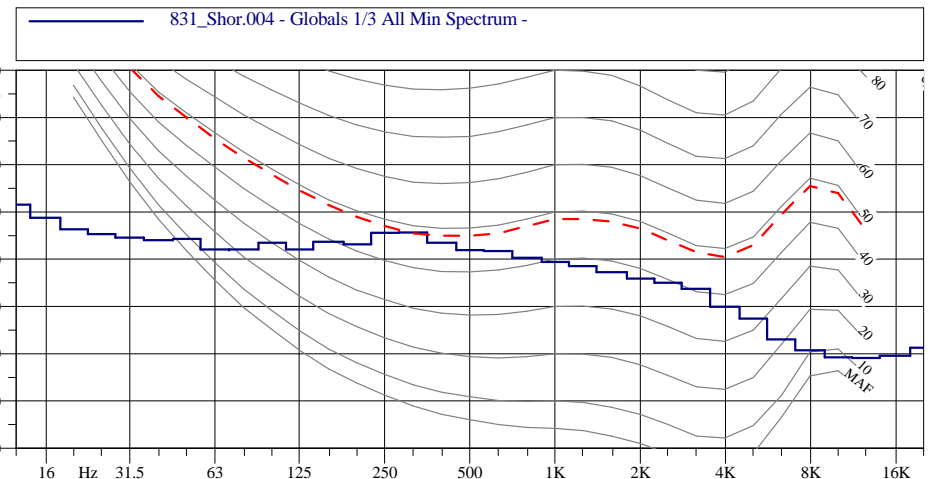
dB project

Studio Tecnico di Ingegneria, Acustica e Vibrazioni

Ricettore R4
Rumore Ante Operam - 1^a misura in Diurno



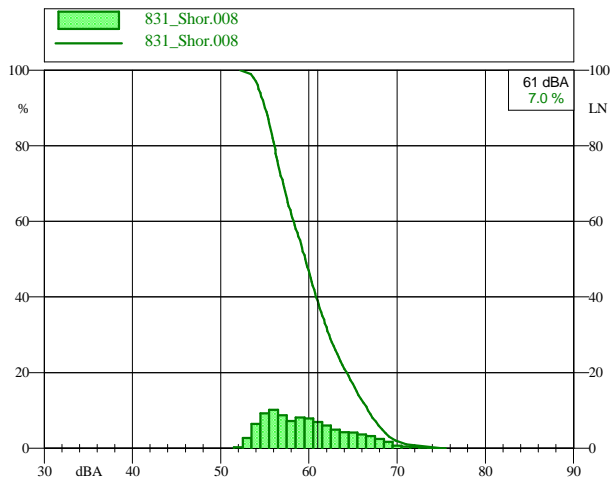
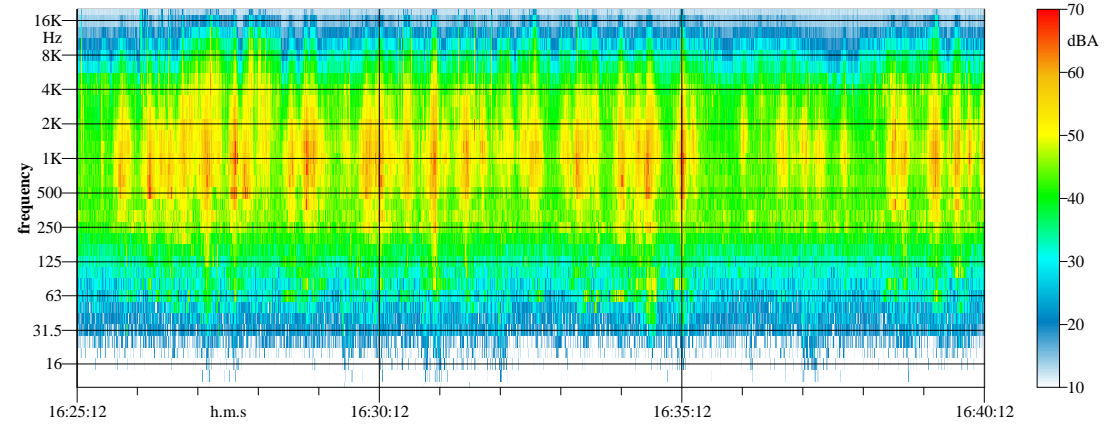
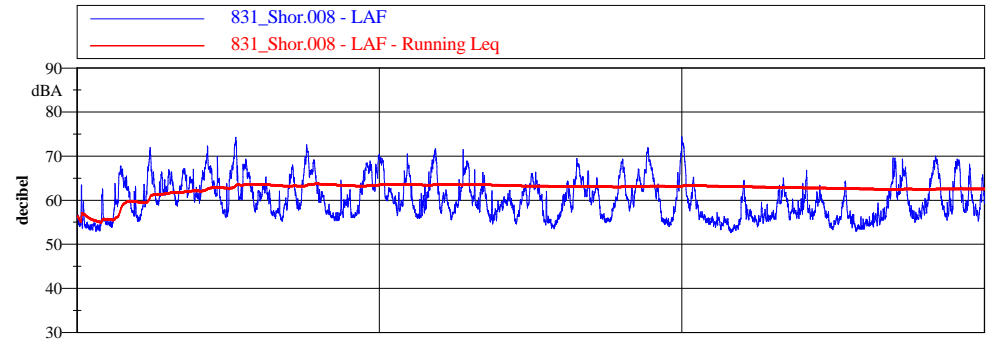
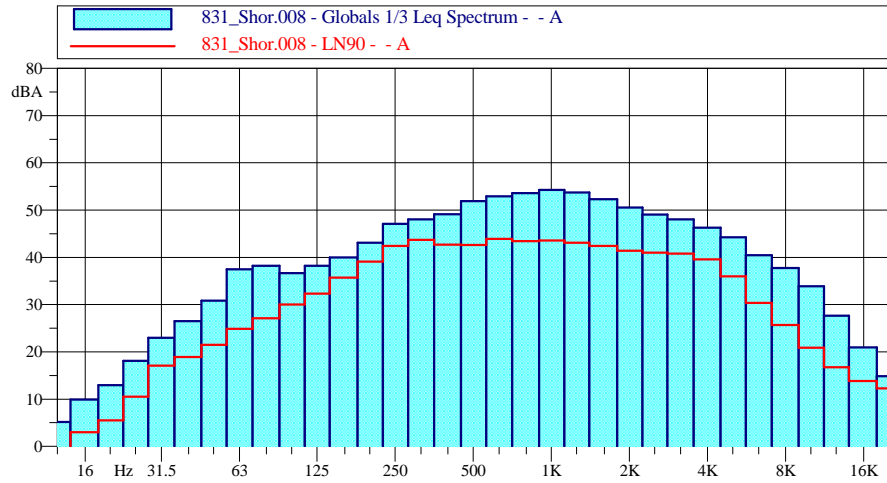
Leq = 62.8 dBA
L90 = 54.6 dBAF
Lmin = 52.5 dBAF



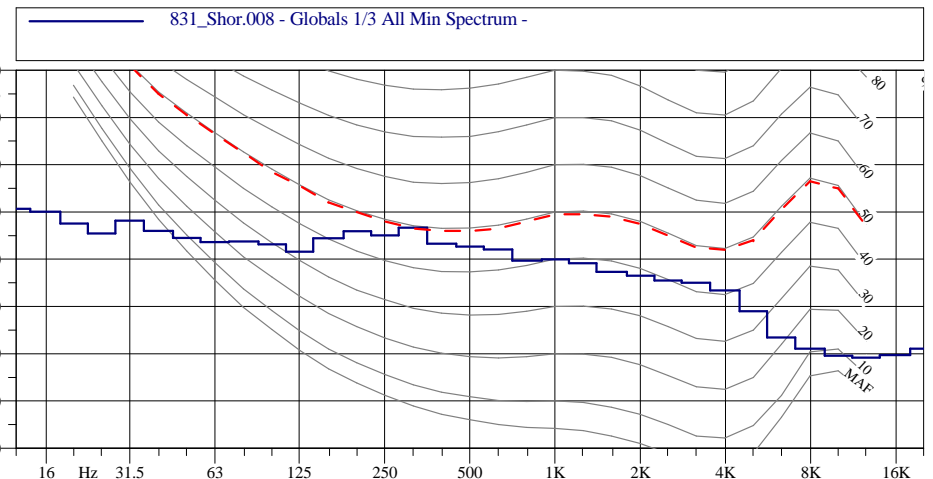
dB project

Studio Tecnico di Ingegneria, Acustica e Vibrazioni

Ricettore R4
Rumore Ante Operam - 2^a misura in Diurno



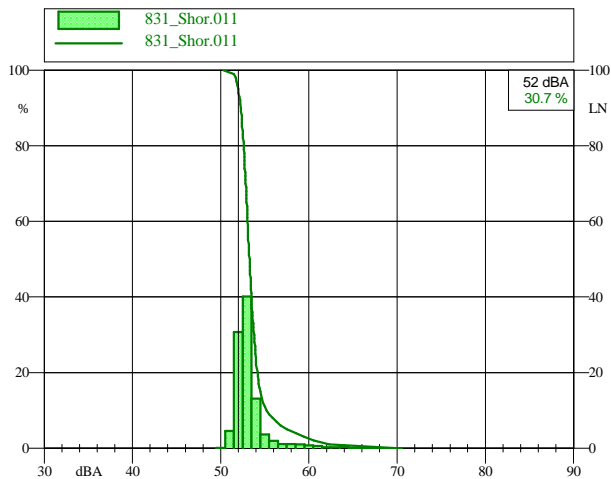
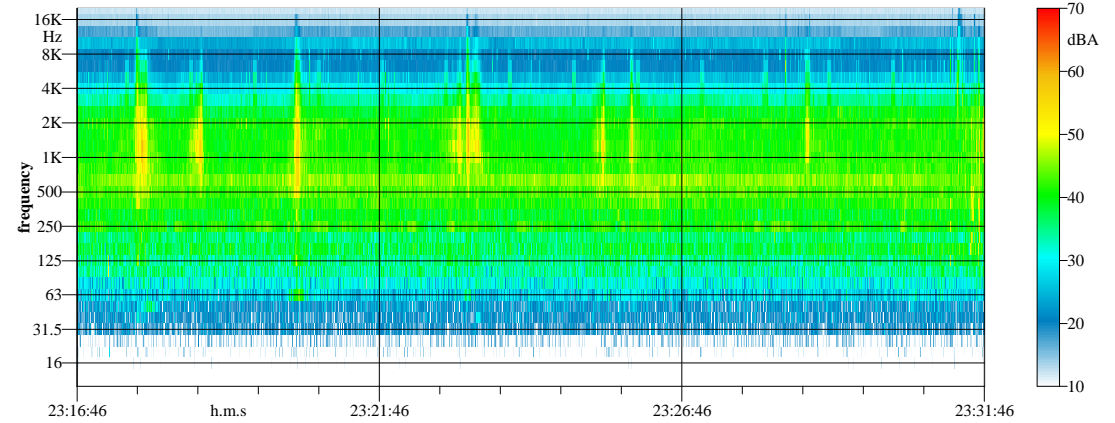
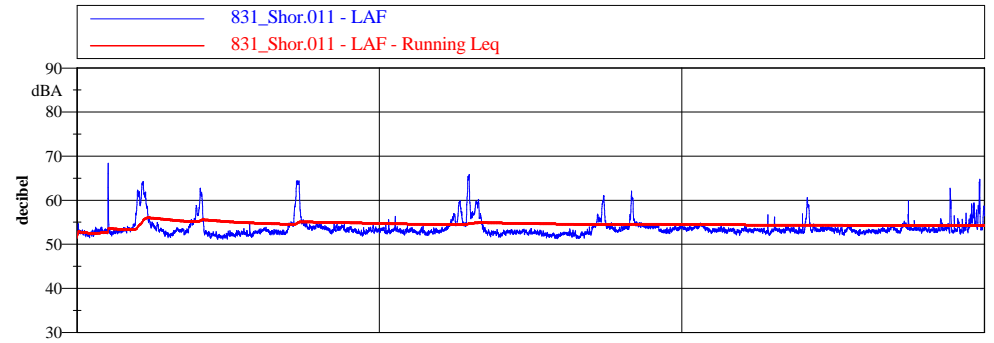
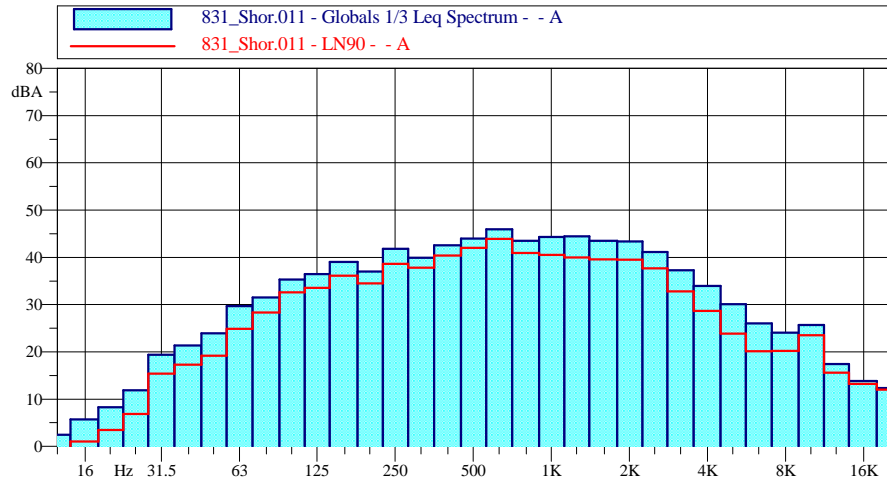
Leq = 62.7 dBA
L90 = 55.1 dBAF
Lmin = 52.5 dBAF



dB project

Studio Tecnico di Ingegneria, Acustica e Vibrazioni

Ricettore R4
Rumore Ante Operam - misura in Notturmo



Leq = 54.4 dBA
L90 = 52.3 dBAF
Lmin = 51.1 dBAF

