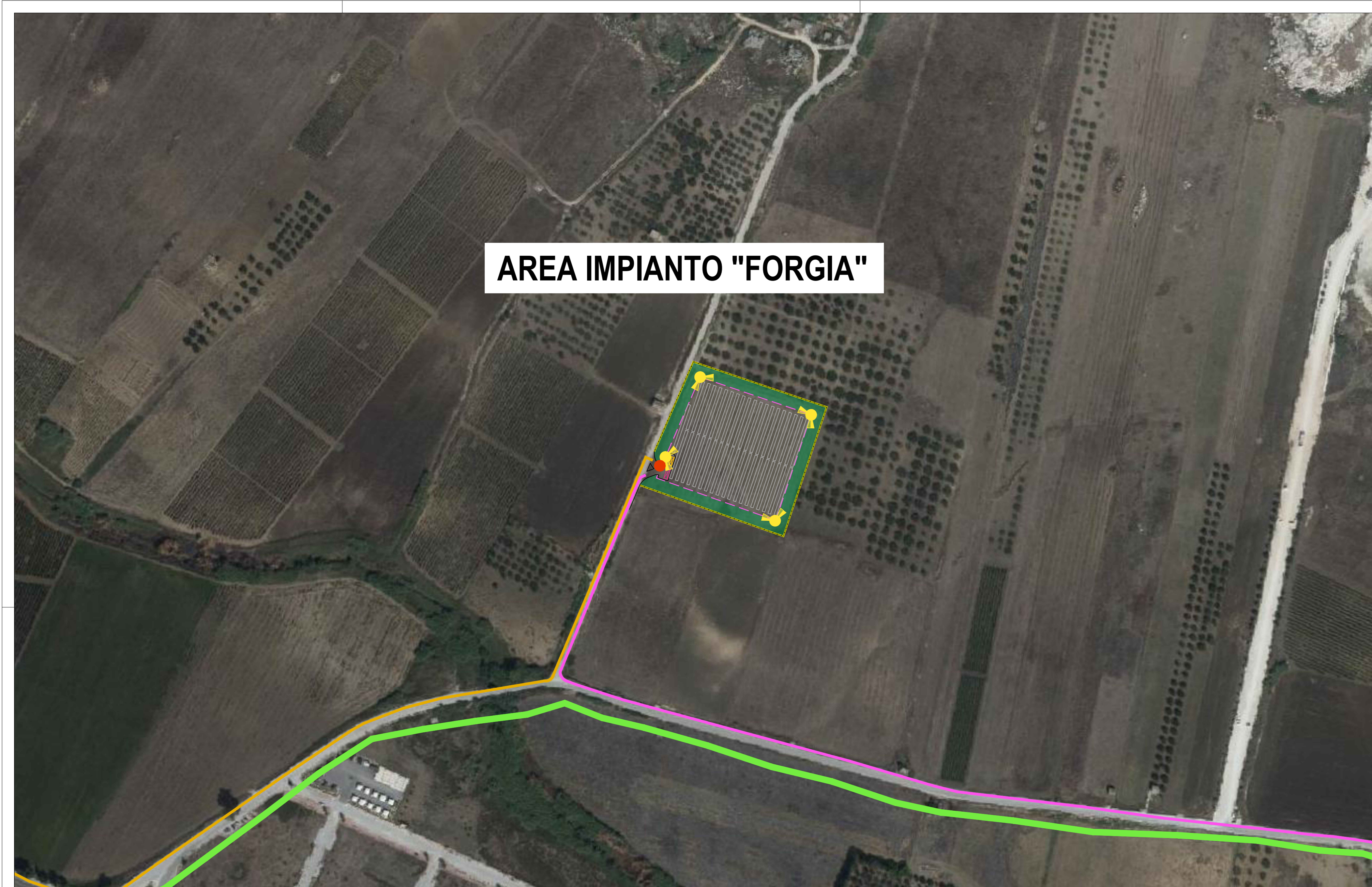
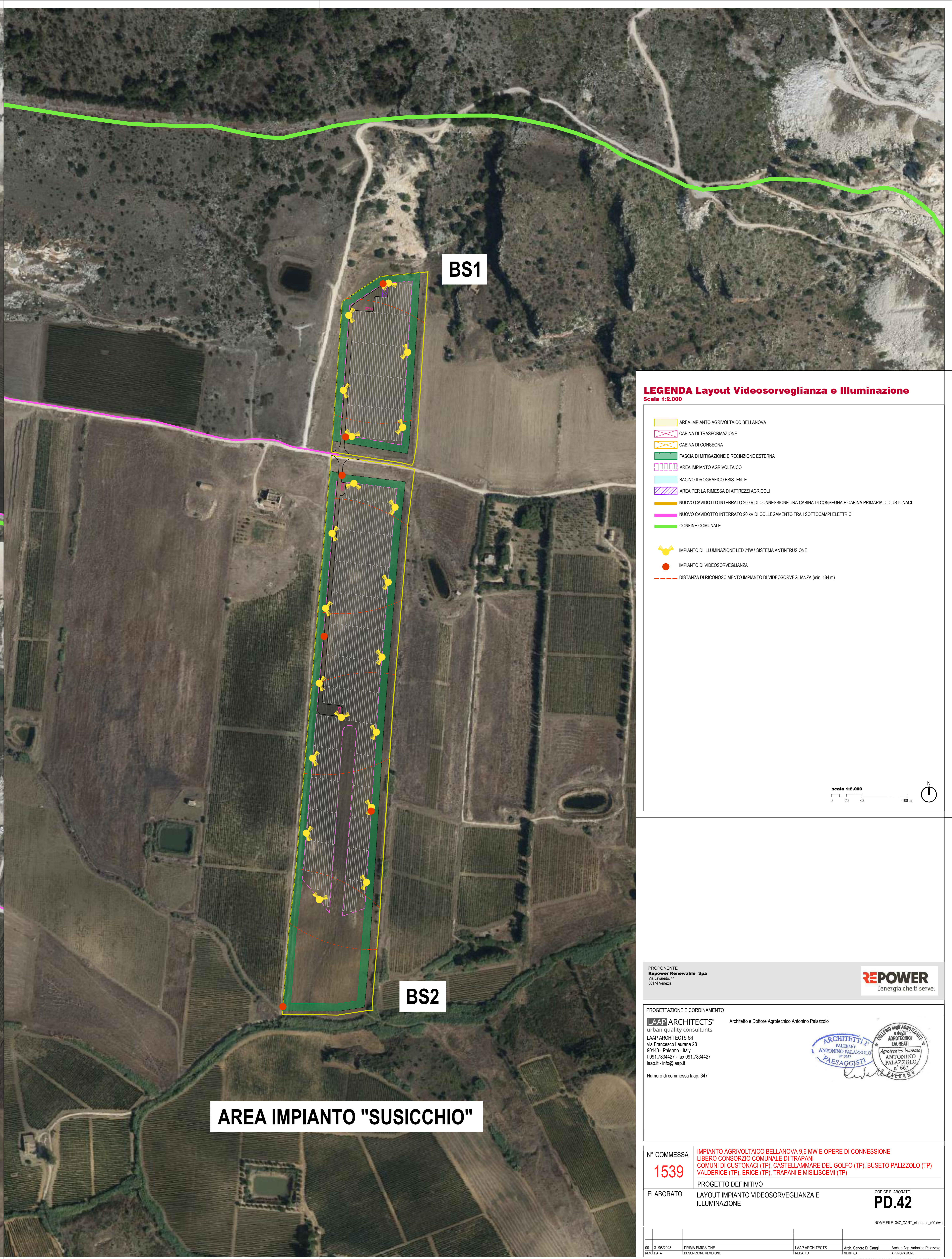


AREA IMPIANTO "FORGIA"

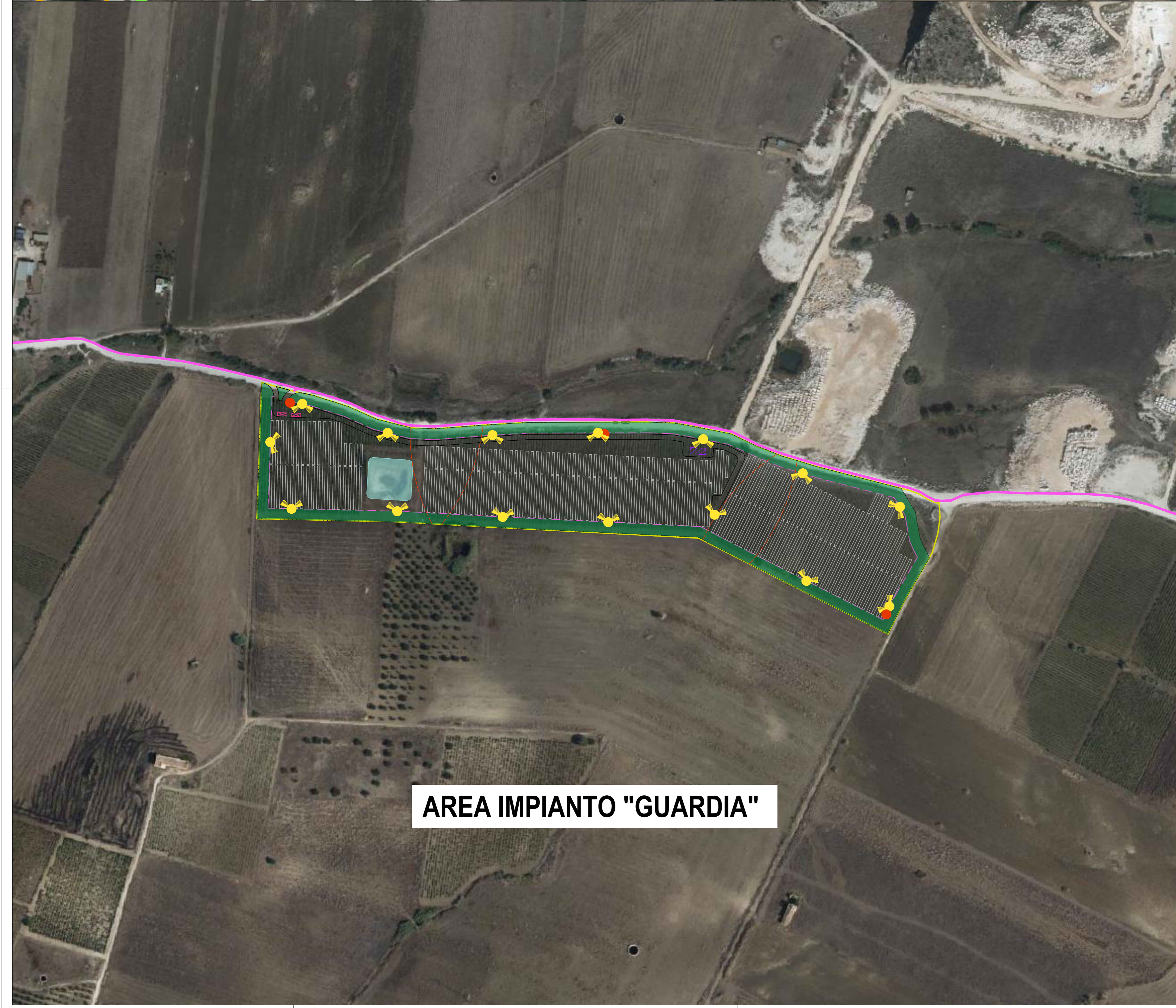


BS1
















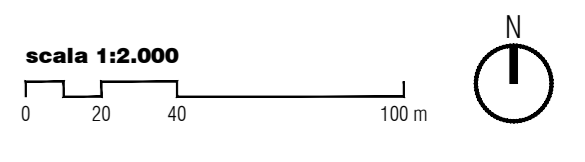
BS2

AREA IMPIANTO "GUARDIA"



LEGENDA Layout Videosorveglianza e Illuminazione
Scala 1:2.000

-  AREA IMPIANTO AGRIVOLTACO BELLANNOVA
-  CABINA DI TRASFORMAZIONE
-  CABINA DI CONSEGNA
-  FASCIA DI MITIGAZIONE E RECINZIONE ESTERNA
-  AREA IMPIANTO AGRIVOLTACO
-  BACINO IDROGRAFICO ESISTENTE
-  AREA PER LA RIMESSA DI ATTREZZI AGRICOLI
-  NUOVO CAVIDOTTO INTERRATO 20 KV DI CONNESSIONE TRA CABINA DI CONSEGNA E CABINA PRIMARIA DI CUSTONACI
-  NUOVO CAVIDOTTO INTERRATO 20 KV DI COLLEGAMENTO TRA I SOTTOCAMPI ELETTRICI
-  CONFINE COMUNALE
-  IMPIANTO DI ILLUMINAZIONE LED 71W | SISTEMA ANTINTRUSIONE
-  IMPIANTO DI VIDEOSORVEGLIANZA
-  DISTANZA DI RICONOSCIMENTO IMPIANTO DI VIDEOSORVEGLIANZA (min. 184 m)



PROponente
Repower Renewable Spa
Via Lomello, 81
30174 Venezia

REPOWER
L'energia che ti serve.

PROGETTAZIONE E CORDINAMENTO
LAAP ARCHITECTS urban quality consultants
Architetto e Dottore Agronomo Antonino Palazzolo

LAAP ARCHITECTS SpA
Via Francesco Lussana 28
90143 - Palermo - Italy
1091.7834427 - fax 091.7834427
laap.it - info@laap.it

Numero di commessa laap: 347

ARCHITETTI
ANTONINO PALAZZOLO
PALAZZOLO
n° 667

AGROTECNICO
ANTONINO PALAZZOLO
n° 667

N° COMMessa
1539

IMPIANTO AGRIVOLTACO BELLANNOVA 9,6 MW E OPERE DI CONNESSIONE LIBERO CONSORZIO COMUNALE DI TRAPANI (COMUNI DI CUSTONACI (TP), CASTELLAMMARE DEL GOLFO (TP), BUSETO PALAZZOLO (TP), VALDERICE (TP), ERICE (TP), TRAPANI E MISLISCEMI (TP))

PROGETTO DEFINITIVO

ELABORATO
LAYOUT IMPIANTO VIDEOSORVEGLIANZA E ILLUMINAZIONE

CODICE ELABORATO
PD.42

Nome FILE: 347_CART_abbasso_00.dwg