



**Progetto di realizzazione del nuovo sealine e del campo boe per lo scarico
di gasolio e benzina da navi petroliere al largo del Porto di Pescara**

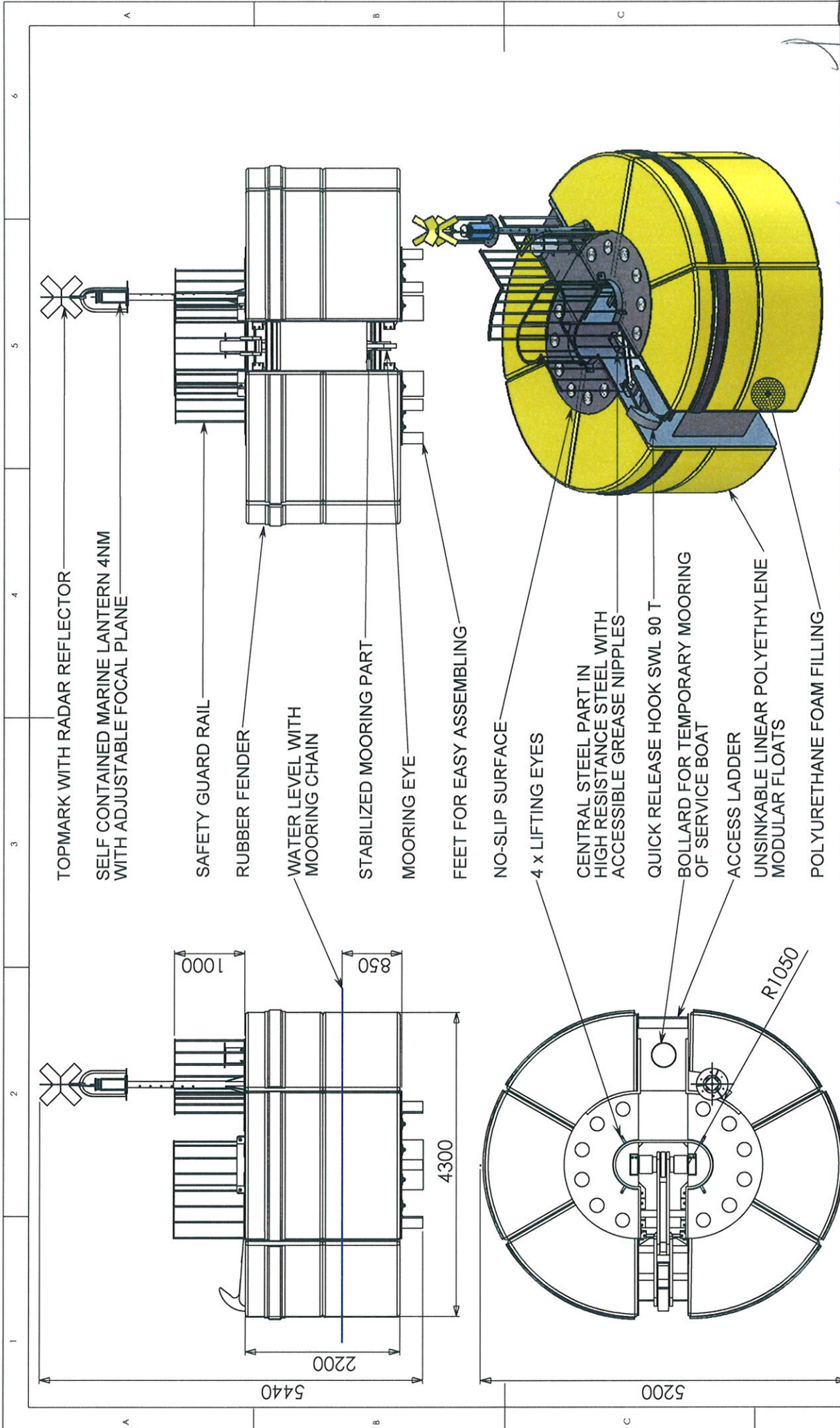
**Relazione tecnica di risposta alle richieste di integrazioni formulate
dalla Commissione Tecnica nell'ambito della Procedura Istruttoria VIA**

(nota prot. CTVA-2013-0002599 del 19/07/2013 trasmessa al proponente mediante
comunicazione prot. DVA-2013-0018148 del 31/07/2013)

ALLEGATO 16 – Schema Boe RESINEX

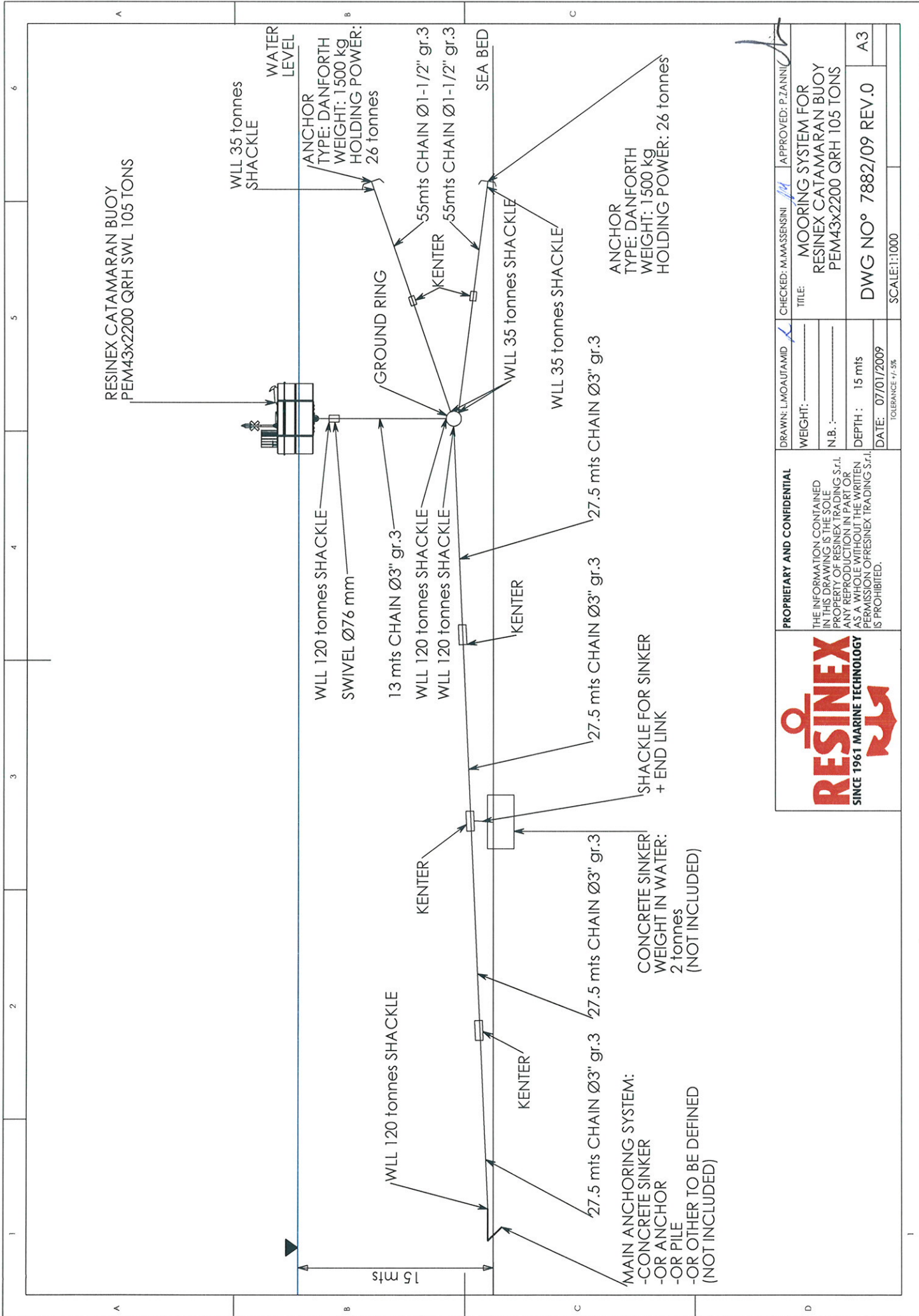
Ottobre 2013
Id: Allegato_16





	PROPRIETARY & CONFIDENTIAL THE INFORMATION CONTAINED IN THIS DRAWING IS THE SOLE PROPERTY OF RESINEX. ANY REPRODUCTION IN ANY FORM OR BY ANY MEANS, AS A WHOLE OR WITHOUT THE WRITTEN PERMISSION OF RESINEX IS PROHIBITED.	DRAWN: M. PEDRETTI CHECKED: M. MASSENSINI APPROVED: P. ZANNI
	TOTAL DRY WEIGHT: 8900 kg NET BUOYANCY: 24500 kg IN SEA WATER	TITLE: RESINEX CATAMARAN BUOY PEM43x2200 QRH90T
	RATED DEPTH: SURFACE DATE: 05/07/2011 TOLERANCE +/- 5%	DWG N° 12242/11 REV.0 A3
	SCALE: 1:50	

TOPMARK WITH RADAR REFLECTOR
 SELF CONTAINED MARINE LANTERN 4NM WITH ADJUSTABLE FOCAL PLANE
 SAFETY GUARD RAIL
 RUBBER FENDER
 WATER LEVEL WITH MOORING CHAIN
 STABILIZED MOORING PART
 MOORING EYE
 FEET FOR EASY ASSEMBLING
 NO-SLIP SURFACE
 4 x LIFTING EYES
 CENTRAL STEEL PART IN HIGH RESISTANCE STEEL WITH ACCESSIBLE GREASE NIPPLES
 QUICK RELEASE HOOK SWL 90 T
 BOLLARD FOR TEMPORARY MOORING OF SERVICE BOAT
 ACCESS LADDER
 UNSINKABLE LINEAR POLYETHYLENE MODULAR FLOATS
 POLYURETHANE FOAM FILLING



RESINEX CATAMARAN BUOY
PEM43x2200 QRH SWL 105 TONS

WLL 35 tonnes SHACKLE
ANCHOR
TYPE: DANFORTH
WEIGHT: 1500 kg
HOLDING POWER:
26 tonnes

WLL 120 tonnes SHACKLE
SWIVEL Ø76 mm

WLL 120 tonnes SHACKLE

15 mts

27.5 mts CHAIN Ø3" gr.3

27.5 mts CHAIN Ø3" gr.3

27.5 mts CHAIN Ø3" gr.3

13 mts CHAIN Ø3" gr.3

KENTER

KENTER

KENTER

KENTER

KENTER

KENTER

WLL 35 tonnes SHACKLE

WLL 35 tonnes SHACKLE

WLL 35 tonnes SHACKLE

WLL 120 tonnes SHACKLE

WLL 120 tonnes SHACKLE

WLL 120 tonnes SHACKLE

WLL 120 tonnes SHACKLE

WLL 120 tonnes SHACKLE

WLL 120 tonnes SHACKLE

CONCRETE SINKER
WEIGHT IN WATER:
2 tonnes
(NOT INCLUDED)

MAIN ANCHORING SYSTEM:
-CONCRETE SINKER
-OR ANCHOR
-OR PILE
-OR OTHER TO BE DEFINED
(NOT INCLUDED)

SHACKLE FOR SINKER
+ END LINK

GROUND RING

SEA BED

WATER LEVEL

WLL 35 tonnes SHACKLE

WLL 35 tonnes SHACKLE

27.5 mts CHAIN Ø3" gr.3

27.5 mts CHAIN Ø3" gr.3

27.5 mts CHAIN Ø3" gr.3

27.5 mts CHAIN Ø3" gr.3

27.5 mts CHAIN Ø3" gr.3

27.5 mts CHAIN Ø3" gr.3

27.5 mts CHAIN Ø3" gr.3

27.5 mts CHAIN Ø3" gr.3

27.5 mts CHAIN Ø3" gr.3

27.5 mts CHAIN Ø3" gr.3

27.5 mts CHAIN Ø3" gr.3

27.5 mts CHAIN Ø3" gr.3

27.5 mts CHAIN Ø3" gr.3

27.5 mts CHAIN Ø3" gr.3

27.5 mts CHAIN Ø3" gr.3

27.5 mts CHAIN Ø3" gr.3

27.5 mts CHAIN Ø3" gr.3

27.5 mts CHAIN Ø3" gr.3

27.5 mts CHAIN Ø3" gr.3

27.5 mts CHAIN Ø3" gr.3

27.5 mts CHAIN Ø3" gr.3

27.5 mts CHAIN Ø3" gr.3

27.5 mts CHAIN Ø3" gr.3

27.5 mts CHAIN Ø3" gr.3

27.5 mts CHAIN Ø3" gr.3

27.5 mts CHAIN Ø3" gr.3

27.5 mts CHAIN Ø3" gr.3

27.5 mts CHAIN Ø3" gr.3

27.5 mts CHAIN Ø3" gr.3

27.5 mts CHAIN Ø3" gr.3

27.5 mts CHAIN Ø3" gr.3

27.5 mts CHAIN Ø3" gr.3

27.5 mts CHAIN Ø3" gr.3

27.5 mts CHAIN Ø3" gr.3

27.5 mts CHAIN Ø3" gr.3

27.5 mts CHAIN Ø3" gr.3

27.5 mts CHAIN Ø3" gr.3

27.5 mts CHAIN Ø3" gr.3

27.5 mts CHAIN Ø3" gr.3

27.5 mts CHAIN Ø3" gr.3

27.5 mts CHAIN Ø3" gr.3

27.5 mts CHAIN Ø3" gr.3

27.5 mts CHAIN Ø3" gr.3

27.5 mts CHAIN Ø3" gr.3

27.5 mts CHAIN Ø3" gr.3

27.5 mts CHAIN Ø3" gr.3

27.5 mts CHAIN Ø3" gr.3

27.5 mts CHAIN Ø3" gr.3

27.5 mts CHAIN Ø3" gr.3

27.5 mts CHAIN Ø3" gr.3

27.5 mts CHAIN Ø3" gr.3

27.5 mts CHAIN Ø3" gr.3

27.5 mts CHAIN Ø3" gr.3

27.5 mts CHAIN Ø3" gr.3

27.5 mts CHAIN Ø3" gr.3

27.5 mts CHAIN Ø3" gr.3

27.5 mts CHAIN Ø3" gr.3

27.5 mts CHAIN Ø3" gr.3

27.5 mts CHAIN Ø3" gr.3

27.5 mts CHAIN Ø3" gr.3

27.5 mts CHAIN Ø3" gr.3

27.5 mts CHAIN Ø3" gr.3

27.5 mts CHAIN Ø3" gr.3

27.5 mts CHAIN Ø3" gr.3

27.5 mts CHAIN Ø3" gr.3

27.5 mts CHAIN Ø3" gr.3

27.5 mts CHAIN Ø3" gr.3

27.5 mts CHAIN Ø3" gr.3

27.5 mts CHAIN Ø3" gr.3

PROPRIETARY AND CONFIDENTIAL THE INFORMATION CONTAINED IN THIS DRAWING IS THE SOLE PROPERTY OF RESINEX TRADING S.r.l. ANY REPRODUCTION IN PART OR AS A WHOLE WITHOUT THE WRITTEN PERMISSION OF RESINEX TRADING S.r.l. IS PROHIBITED.	DRAWN: L.MOAUTAMID CHECKED: M.MASSESSINI APPROVED: P.ZANNI
	TITLE: MOORING SYSTEM FOR RESINEX CATAMARAN BUOY PEM43x2200 QRH 105 TONS
WEIGHT: N.B.: DEPTH: 15 mts DATE: 07/01/2009 TOLERANCE: +/- 5%	DWG NO° 7882/09 REV.0 SCALE: 1:1000
A3	