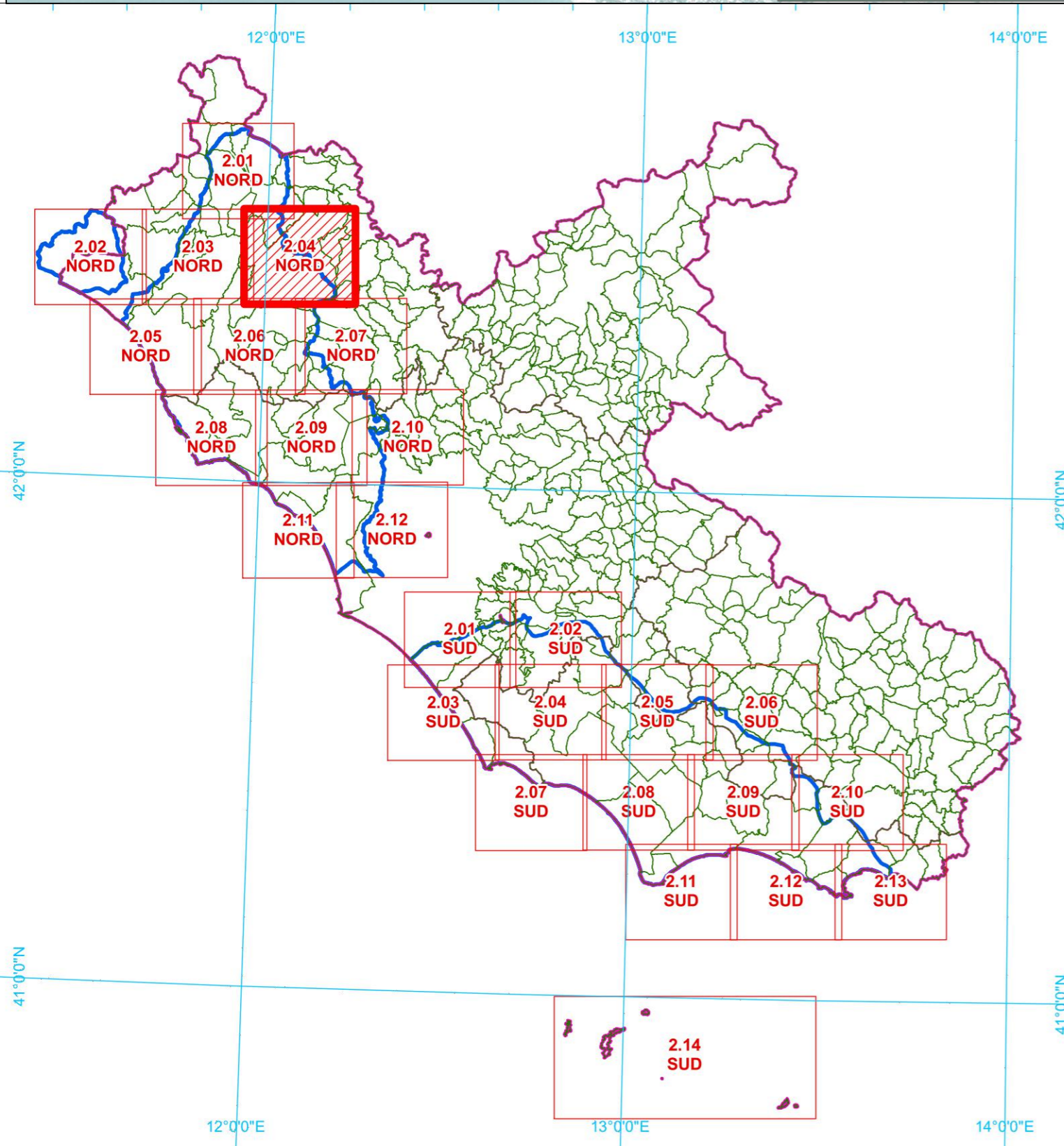
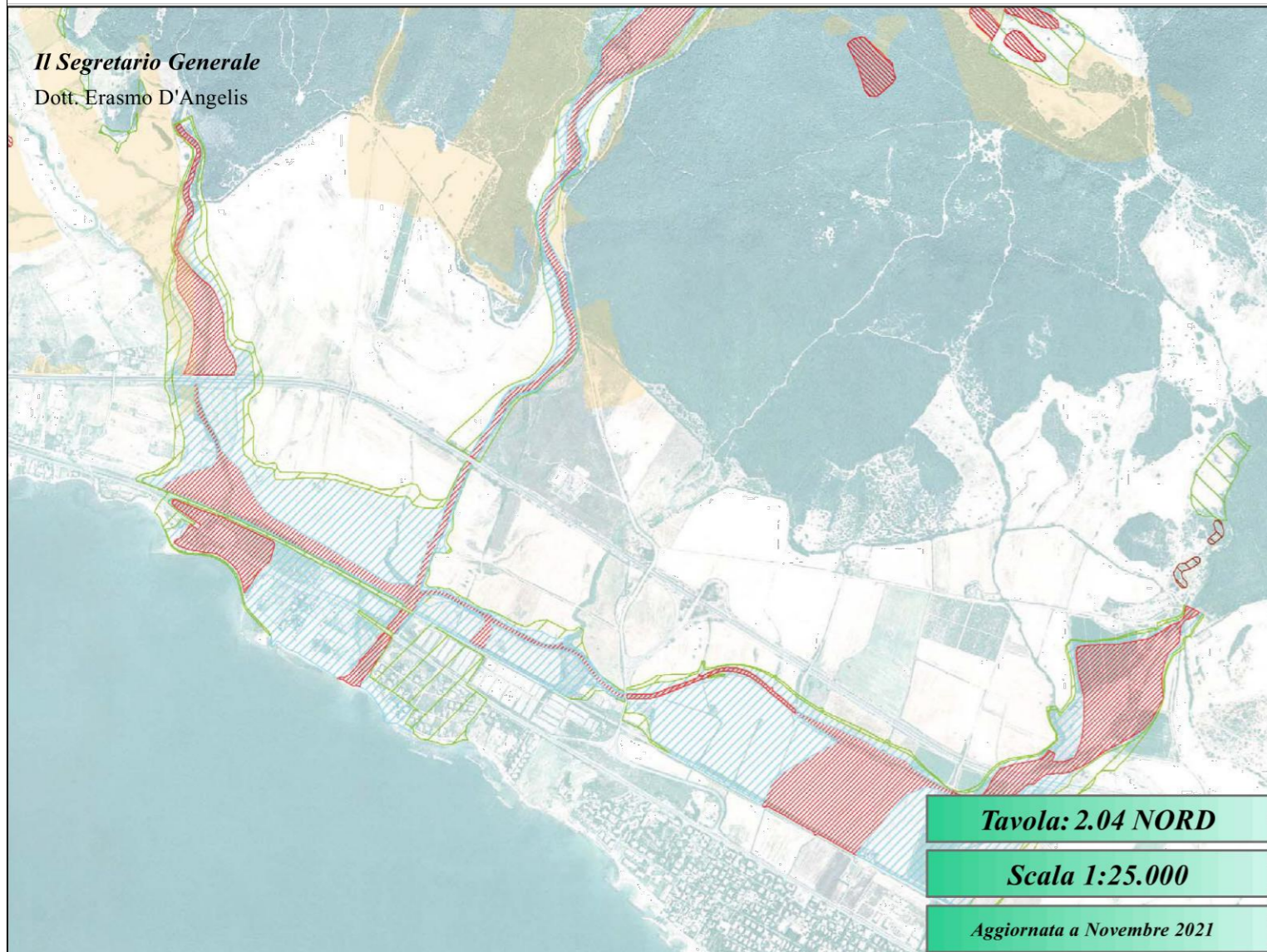




AREE SOTTOPOSTE A TUTELA PER DISSESTO IDROGEOLOGICO

Il Segretario Generale Dott. Erasmo D'Angelis

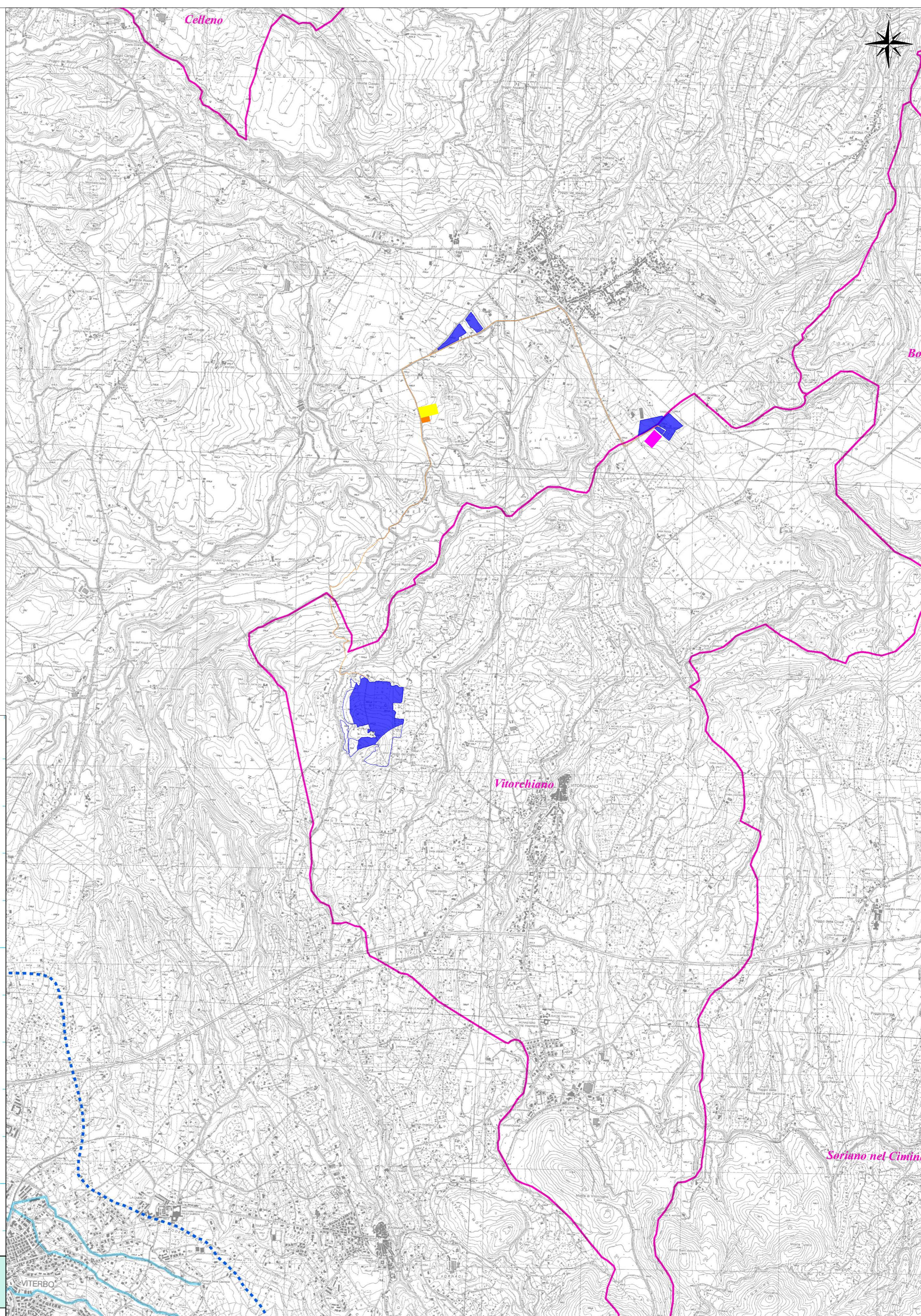


LEGENDA

Table with 2 columns: 'AREE SOTTOPOSTE A TUTELA PER PERICOLO D'INONDAZIONE' and 'AREE DI ATTENZIONE PER PERICOLO DI FRANA D'INONDAZIONE'. Lists various risk and attention areas with corresponding symbols.

Table with 2 columns: 'AREE SOTTOPOSTE A TUTELA PER PERICOLO DI FRANA' and 'LIMITI AMMINISTRATIVI'. Lists landslide risk areas and administrative boundaries.

Table titled 'LIVELLI DI RISCHIO IN FUNZIONE DELLA PERICOLOSITA' E DEL VALORE ESPOSTO'. Shows risk levels (R2, R3, R4) for areal, linear, and punctual elements.



LEGENDA table for the detailed map, defining symbols for photovoltaic generator area, enclosure, external connection line, user electrical station (SEU), 150 kV substation (SSE), and 380 kV station (SE).

Administrative and technical information section. Includes logos of Comune di Vitorchiano, Provincia di Viterbo, and Regione Lazio. Details the project: 'REALIZZAZIONE DI UN IMPIANTO AGROVOLTAICO CONNESSO ALLA R.T.N. DI POTENZA DI PICCO PARI A 33.805,20 kW E POTENZA IN IMMISSIONE PARI A 45.000,00 kW'. Lists the developer, project number (020413), and technical/professional details.