

REGIONE MOLISE
COMUNE DI S.CROCE di MAGLIANO
 Provincia di Campobasso



REALIZZAZIONE E GESTIONE DI UN IMPIANTO FOTOVOLTAICO DELLA POTENZA NOMINALE DI 46.00 MW CON RELATIVE OPERE DI CONNESSIONE ALLA RETE ELETTRICA NAZIONALE

PROGETTISTA PROSPONENTE
Expans
 - Salerno -
 Direttore Tecnico: ing. Teodoro Bottegarelli
 ing. Teodoro Bottegarelli
 1714

STUDIO TECNICO
POWER PROJECT
 Studio Tecnico
 geom. Benedetto Cuioppo

OGGETTO
PROGETTO DEFINITIVO
CAVIDOTTO DI CONNESSIONE

elaborato: febbraio 2023
 data: Maggio 2023
 Varie
 AD
F_3.1.a

Percorso del cavidotto di connessione con relative sezioni

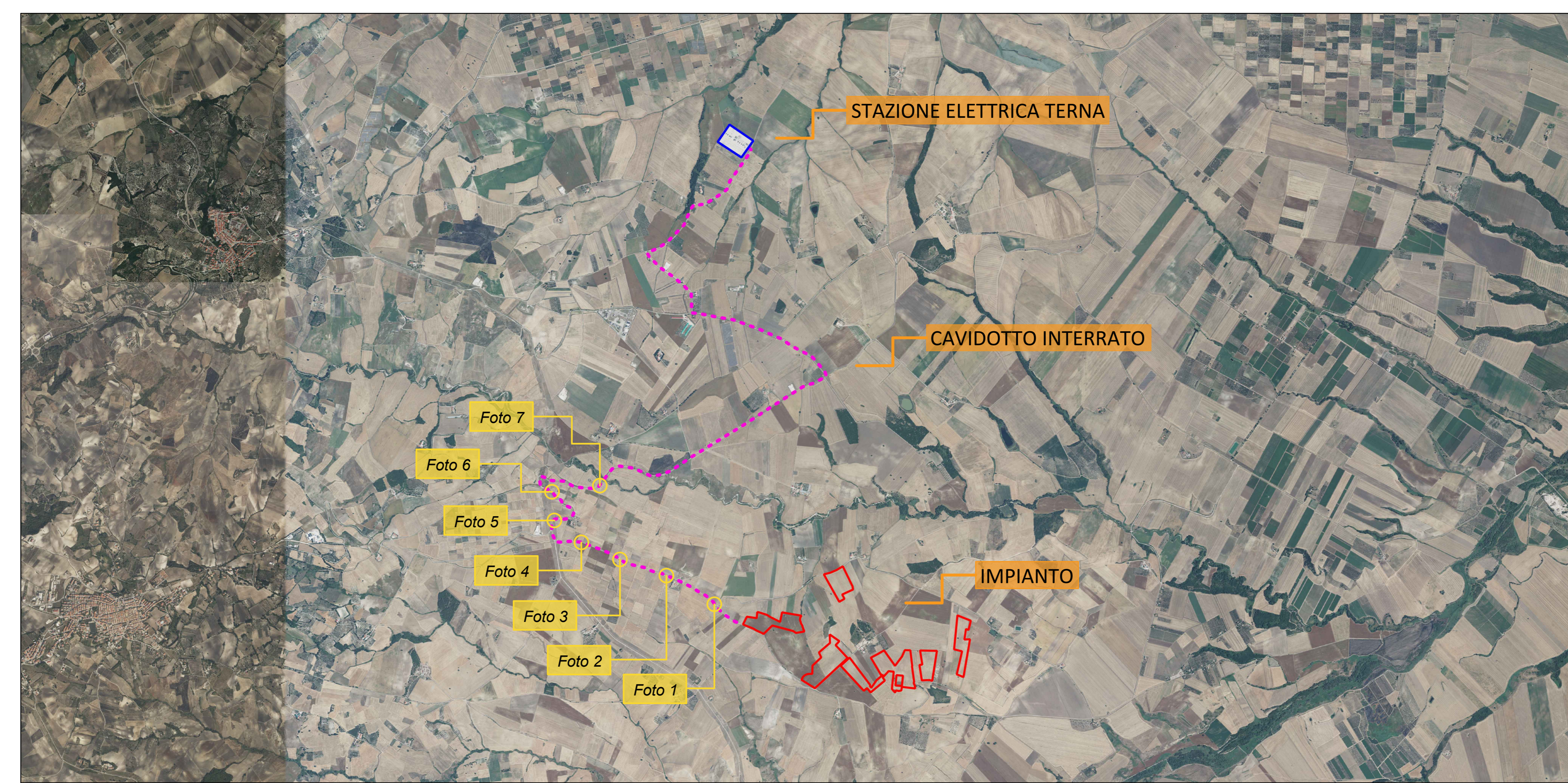
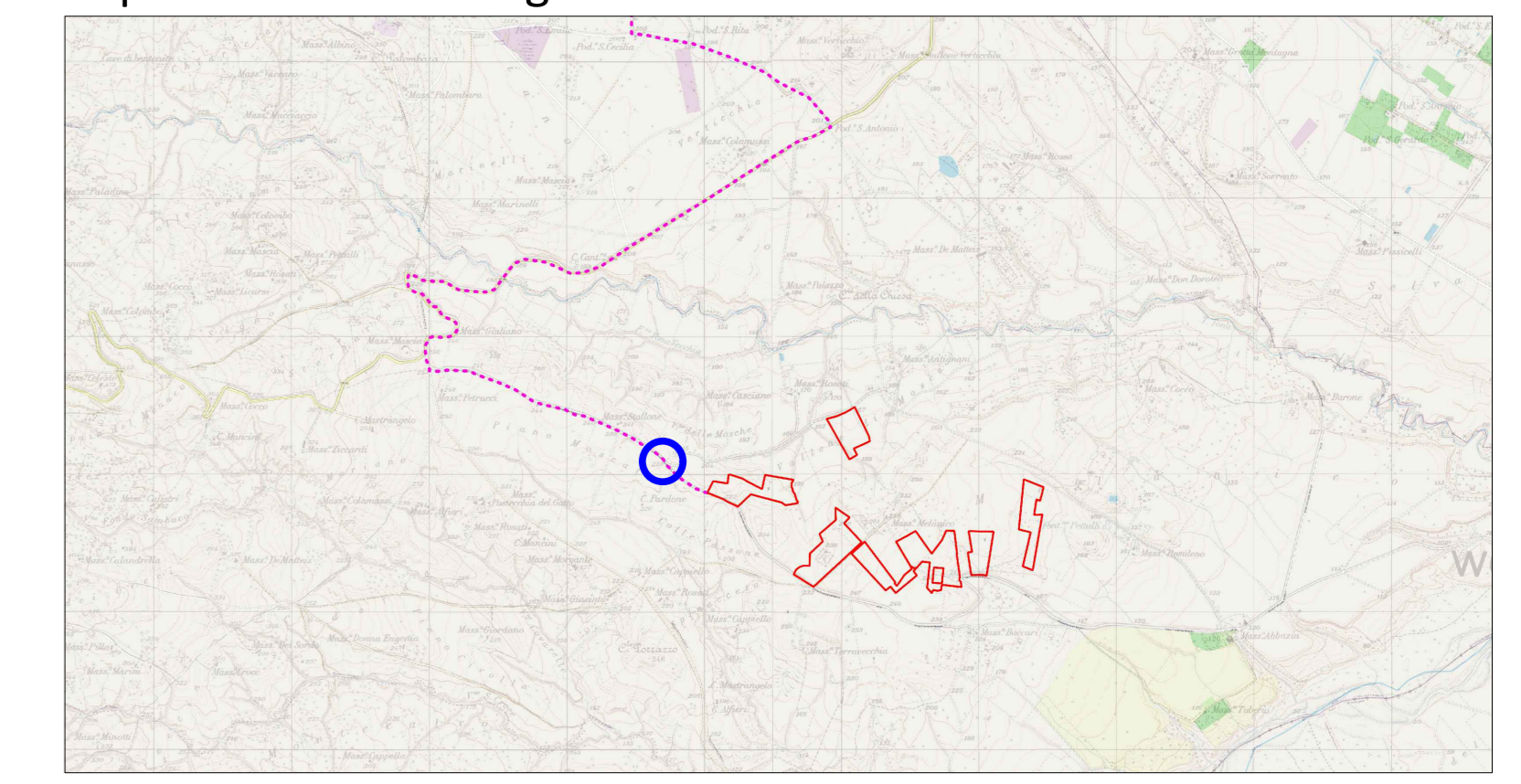


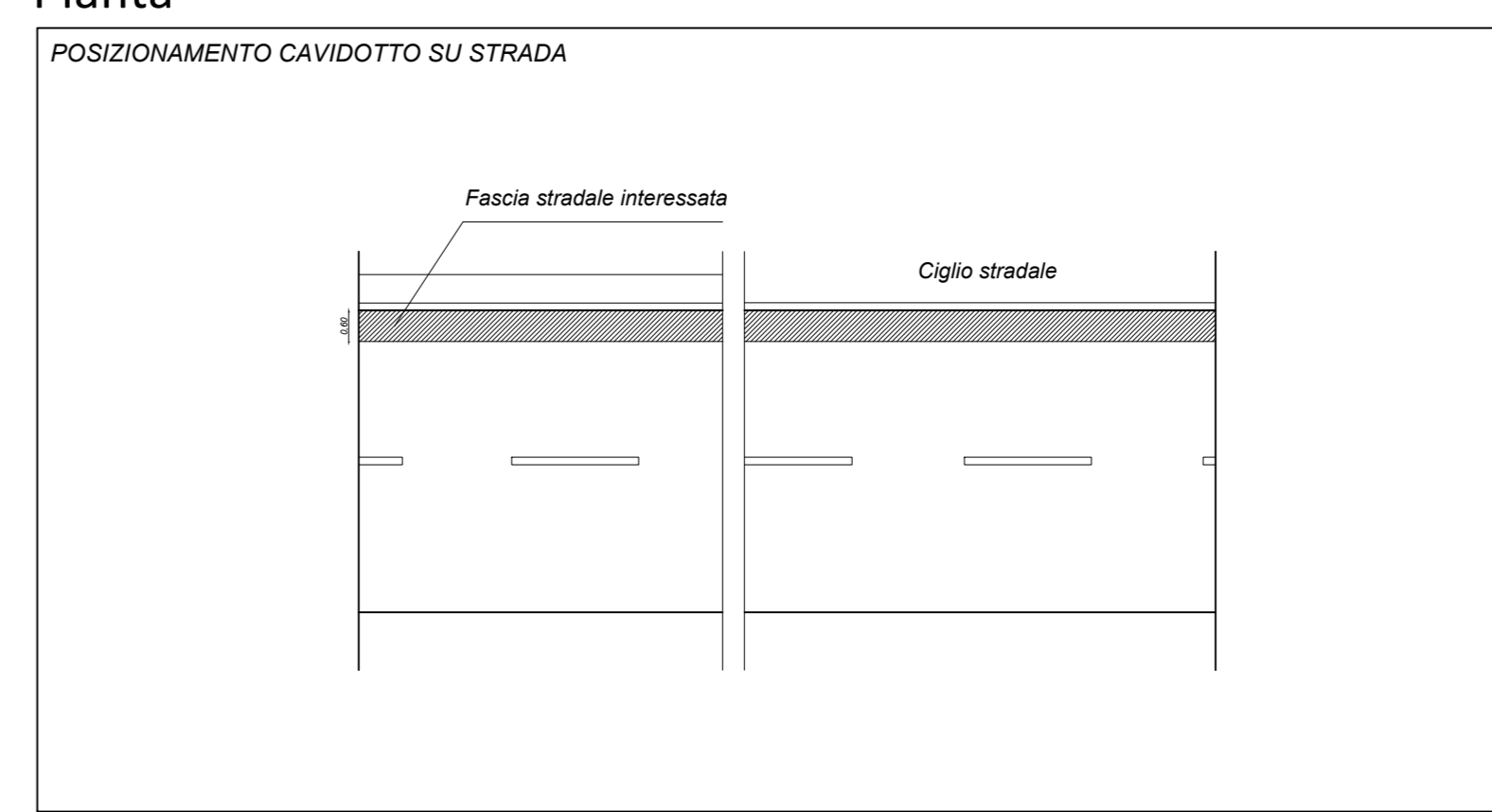
Foto 1



Inquadramento cartografico



Pianta



Sezione

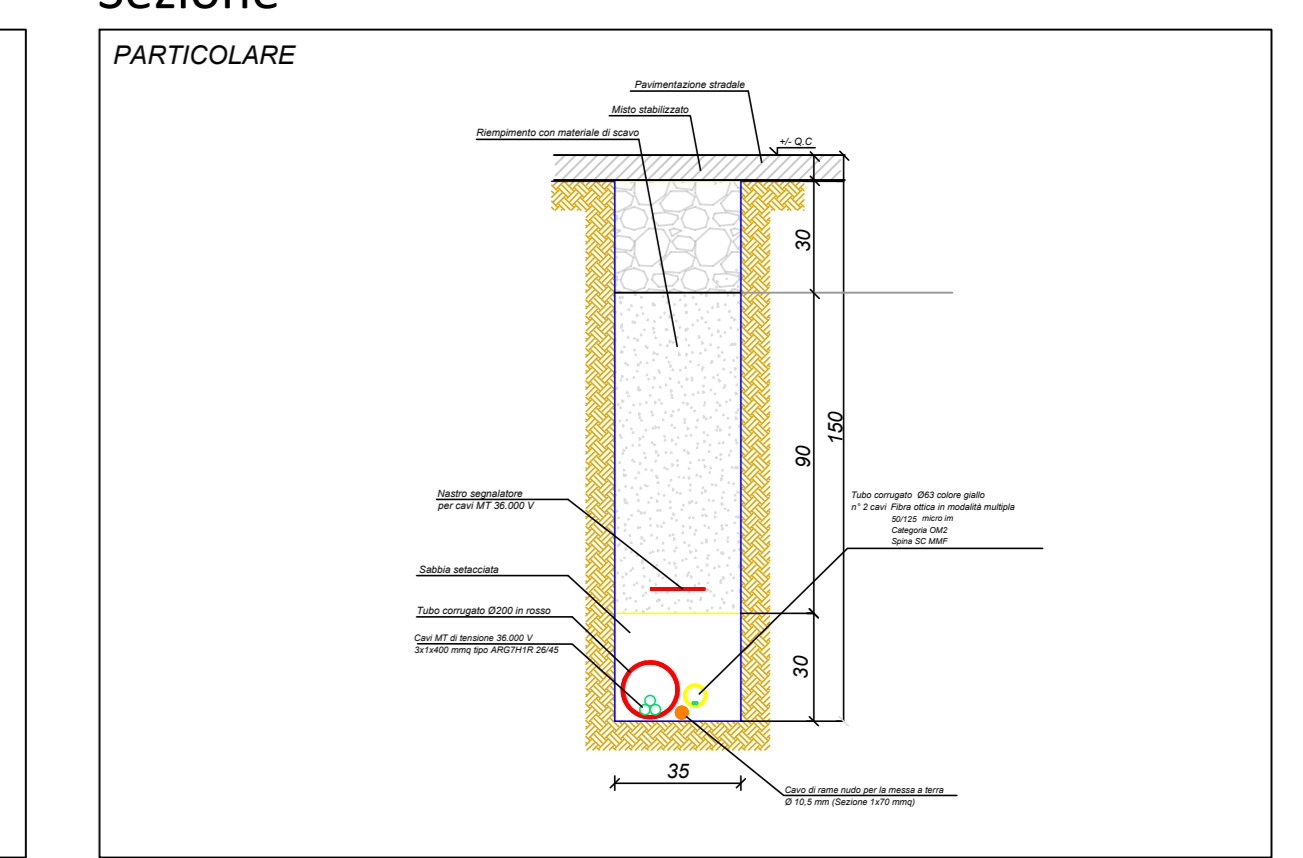
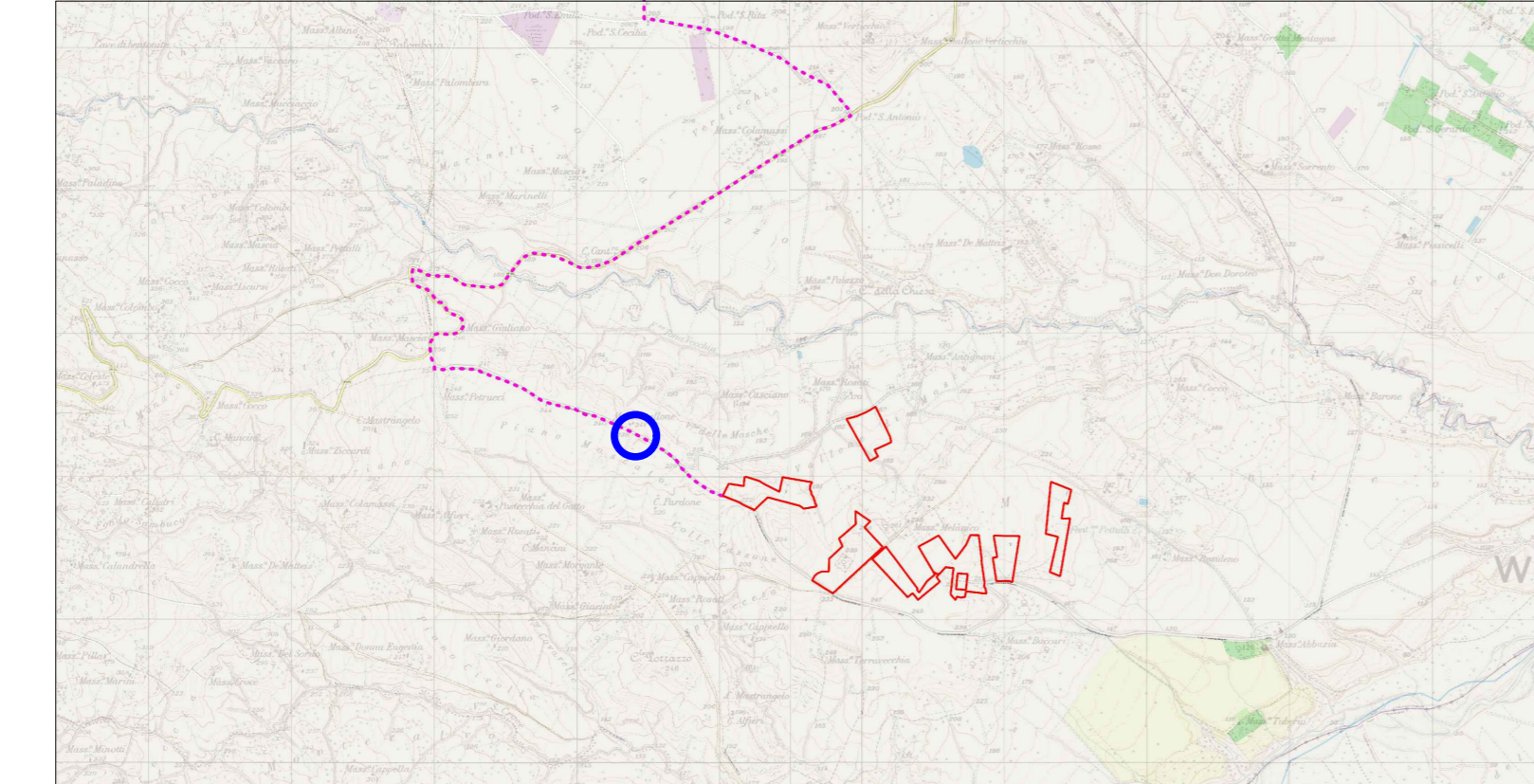


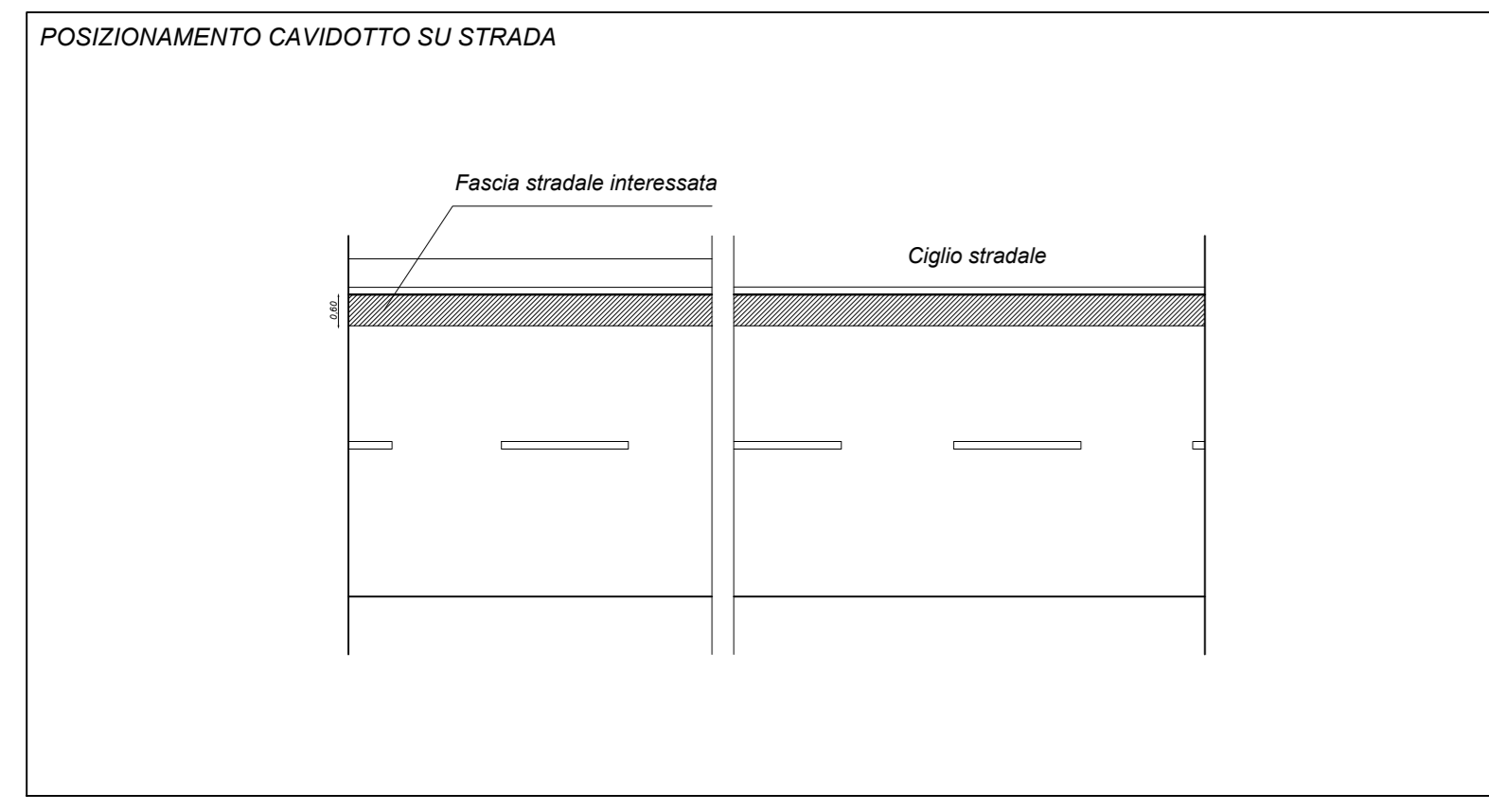
Foto 2



Inquadramento cartografico



Pianta



Sezione

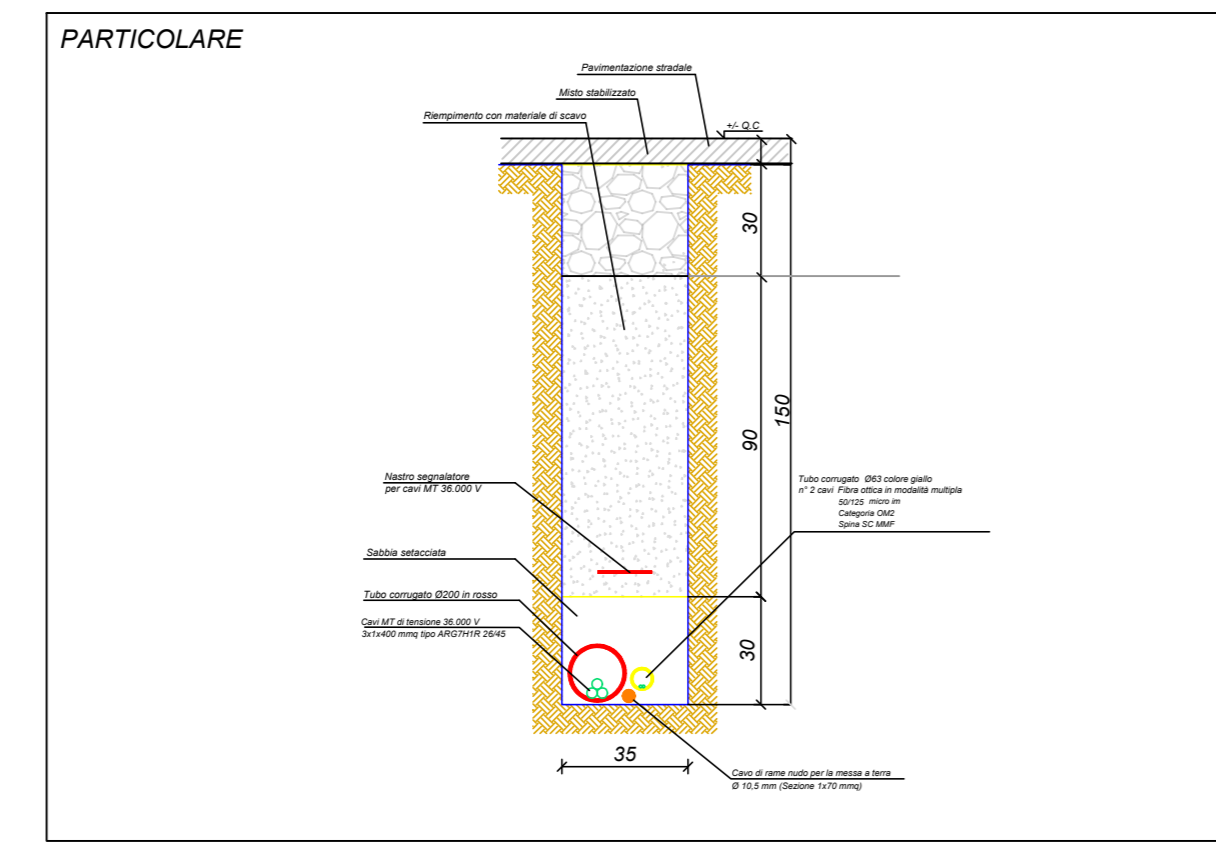
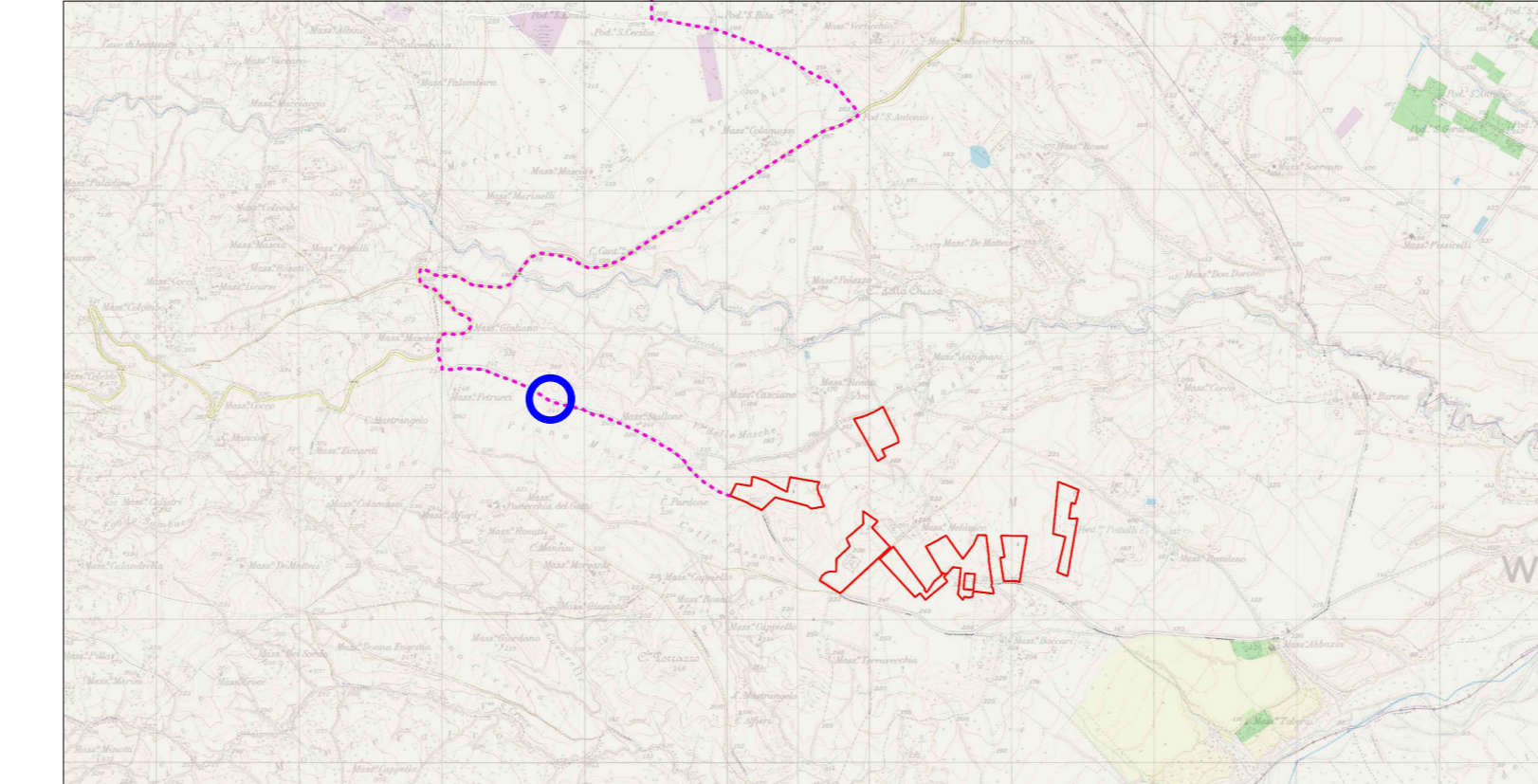


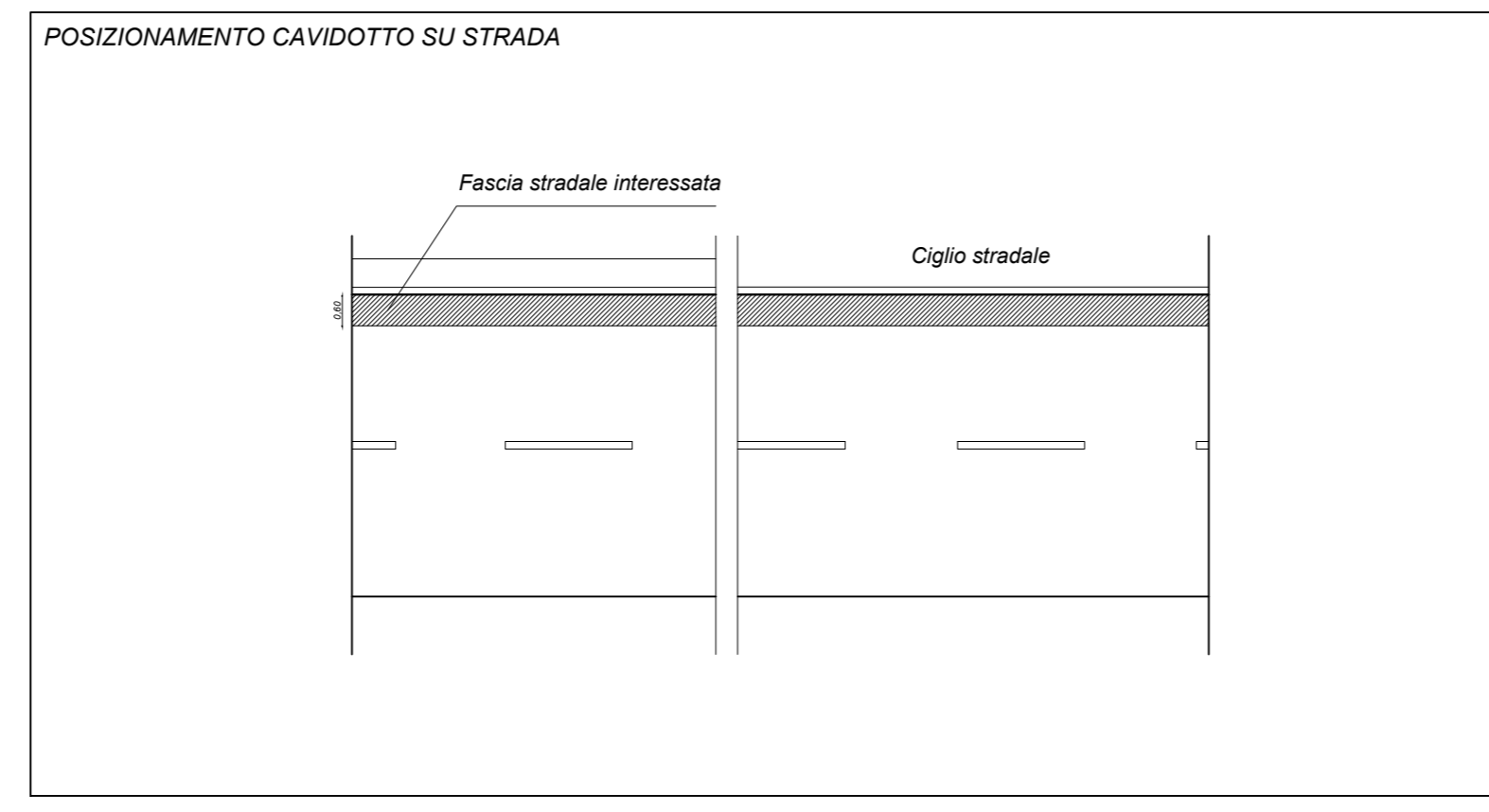
Foto 3



Inquadramento cartografico



Pianta



Sezione

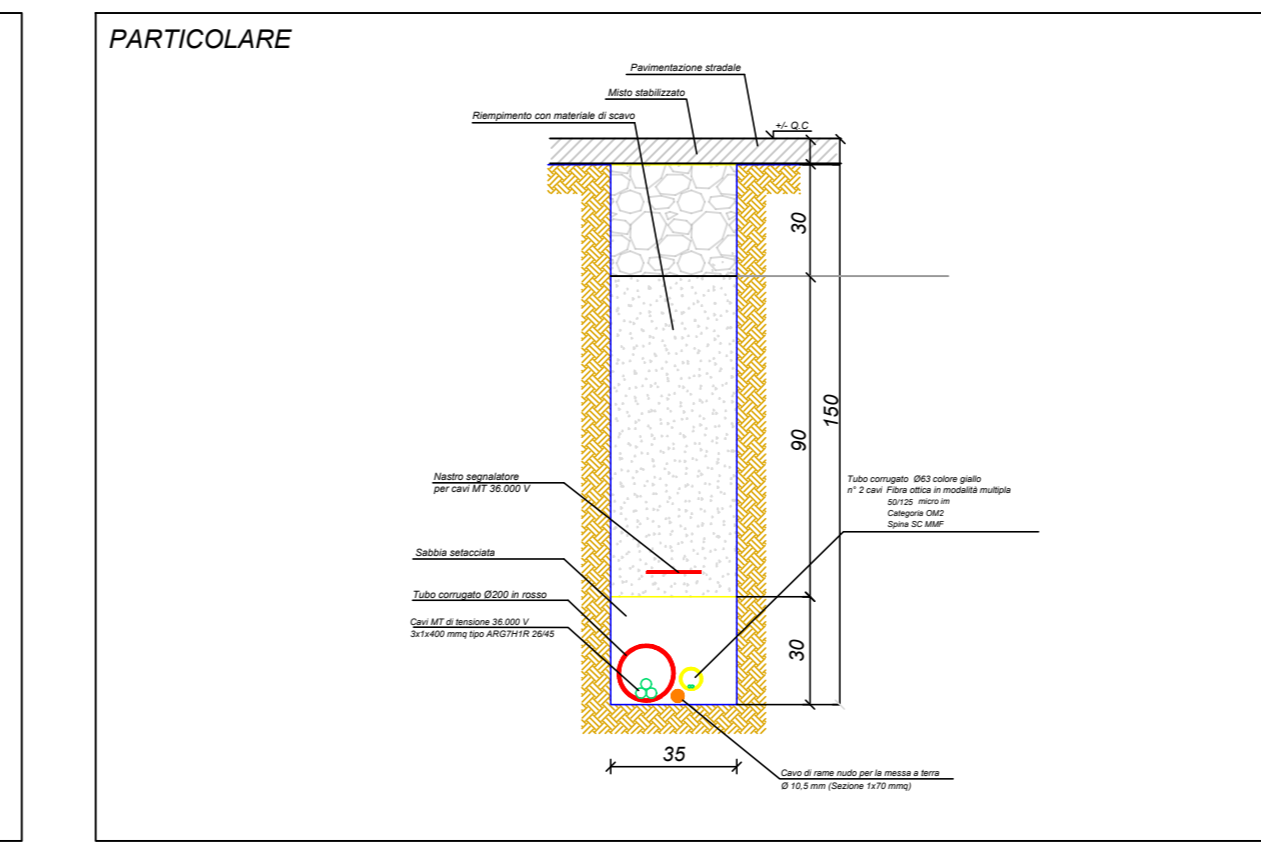
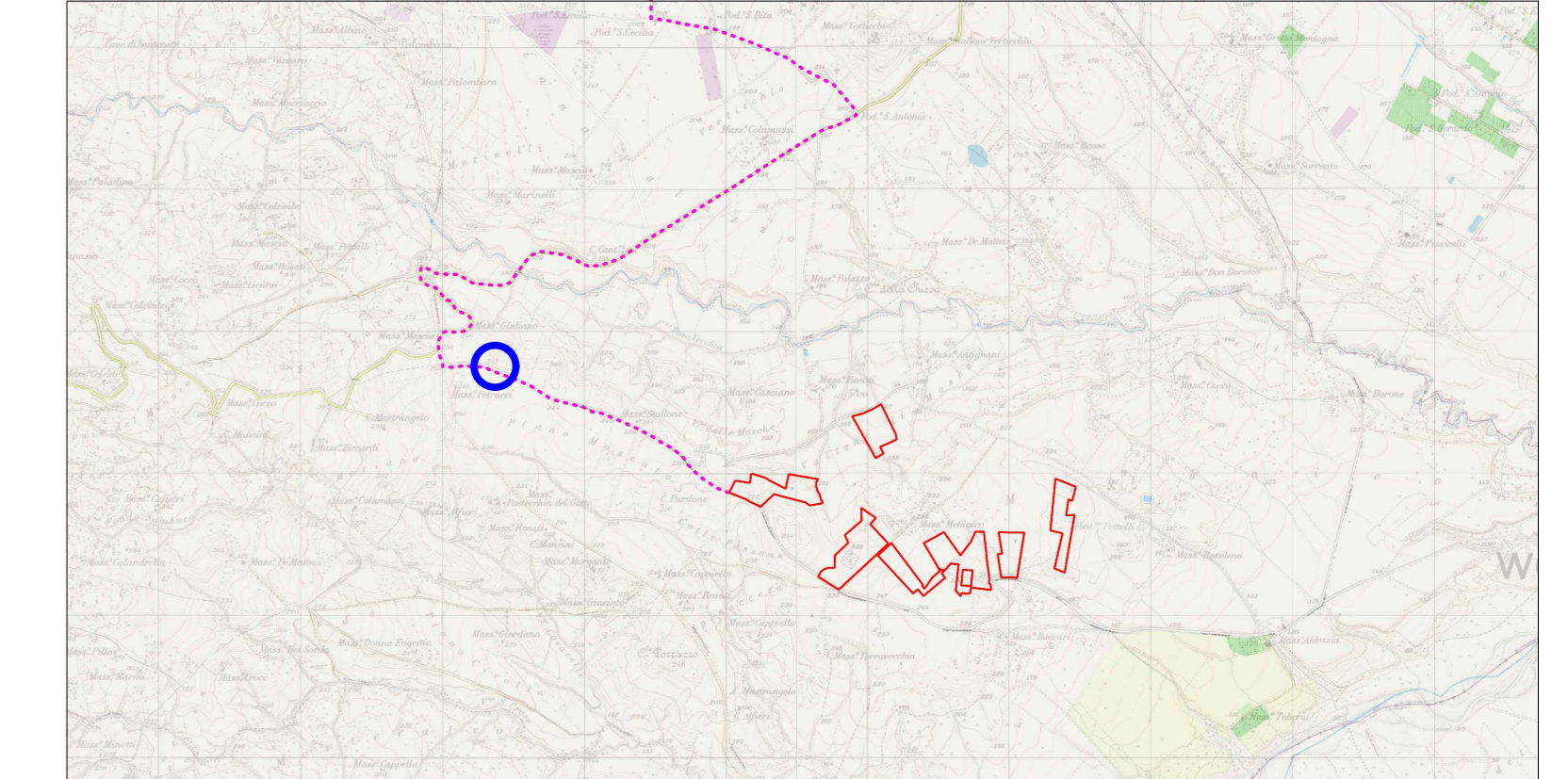


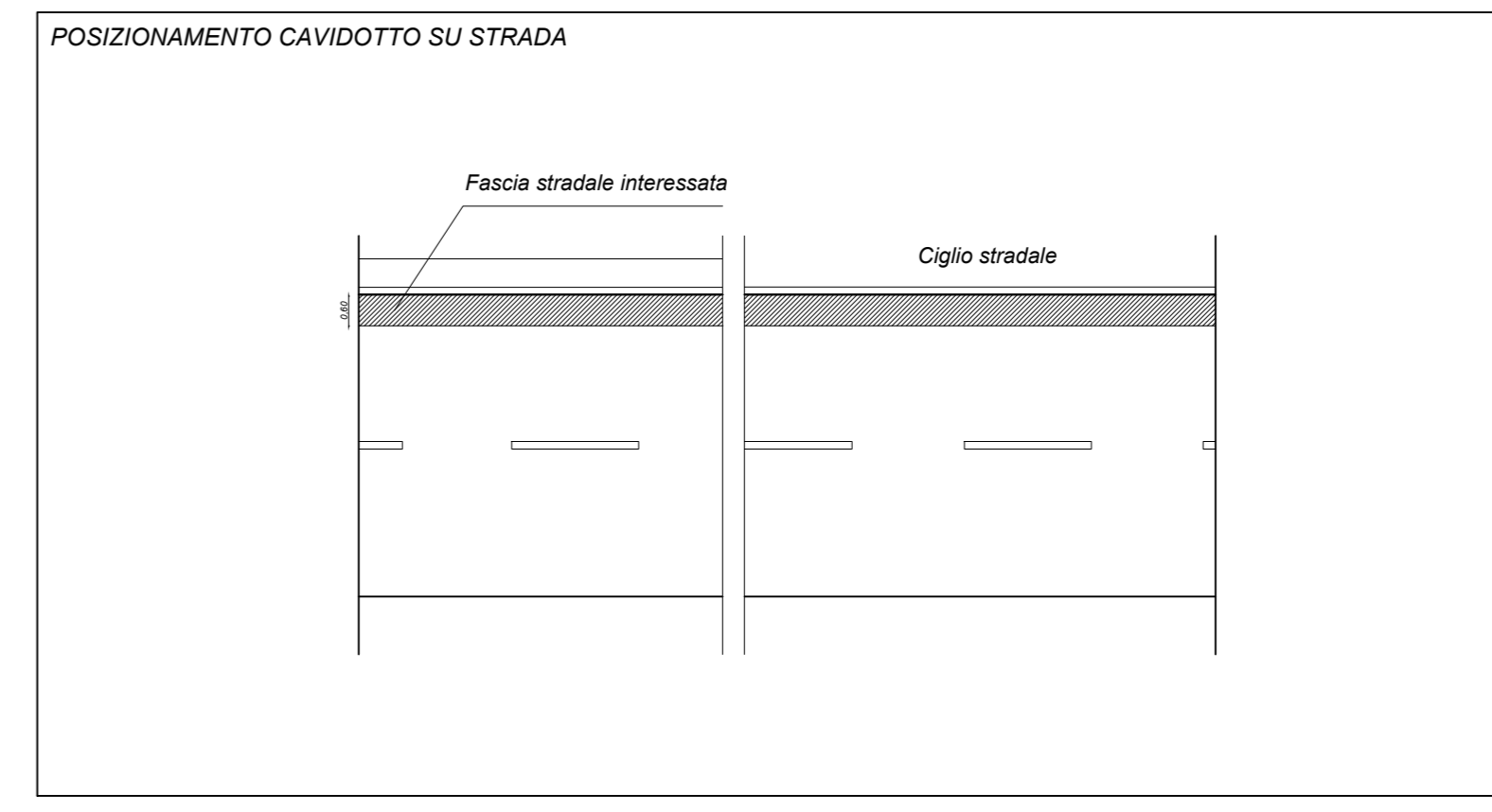
Foto 4



Inquadramento cartografico



Pianta



Sezione

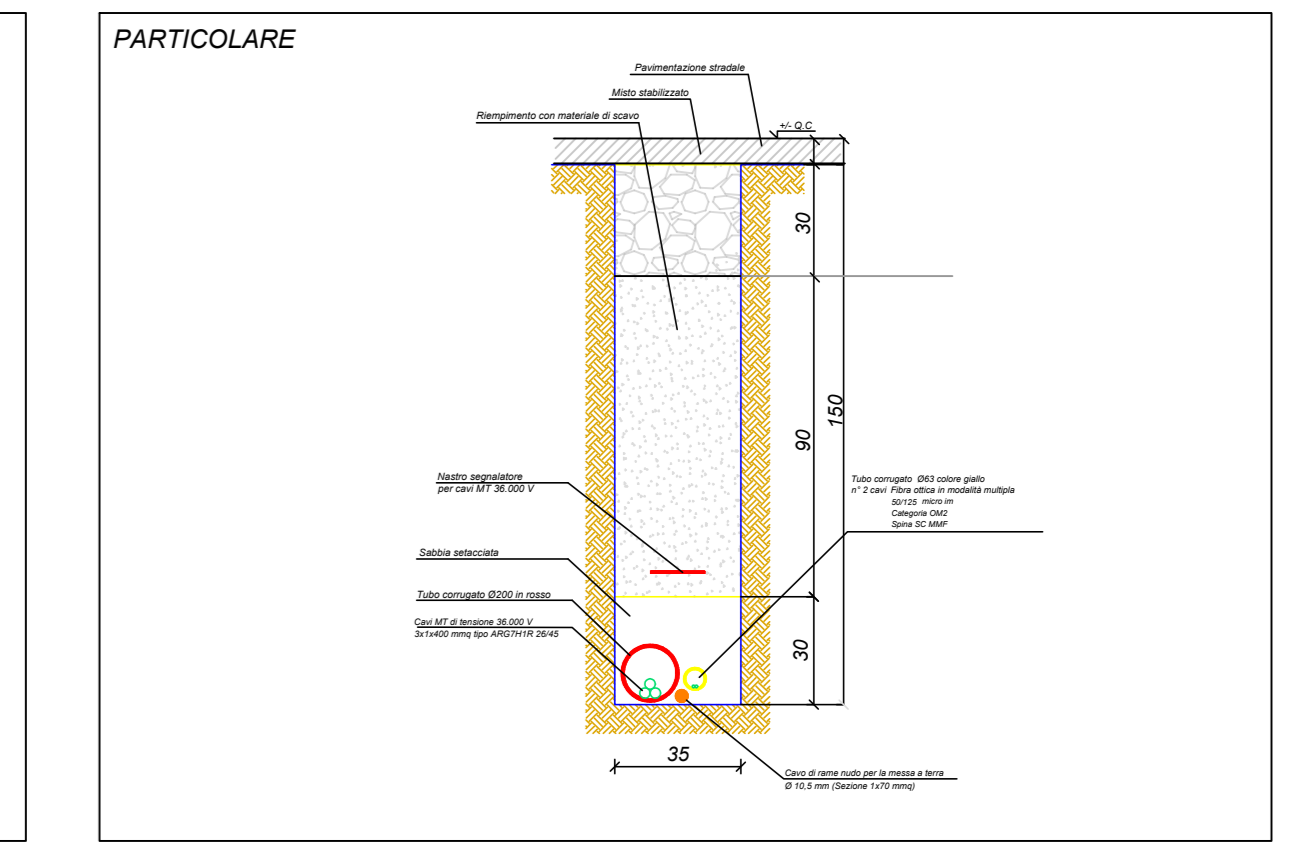
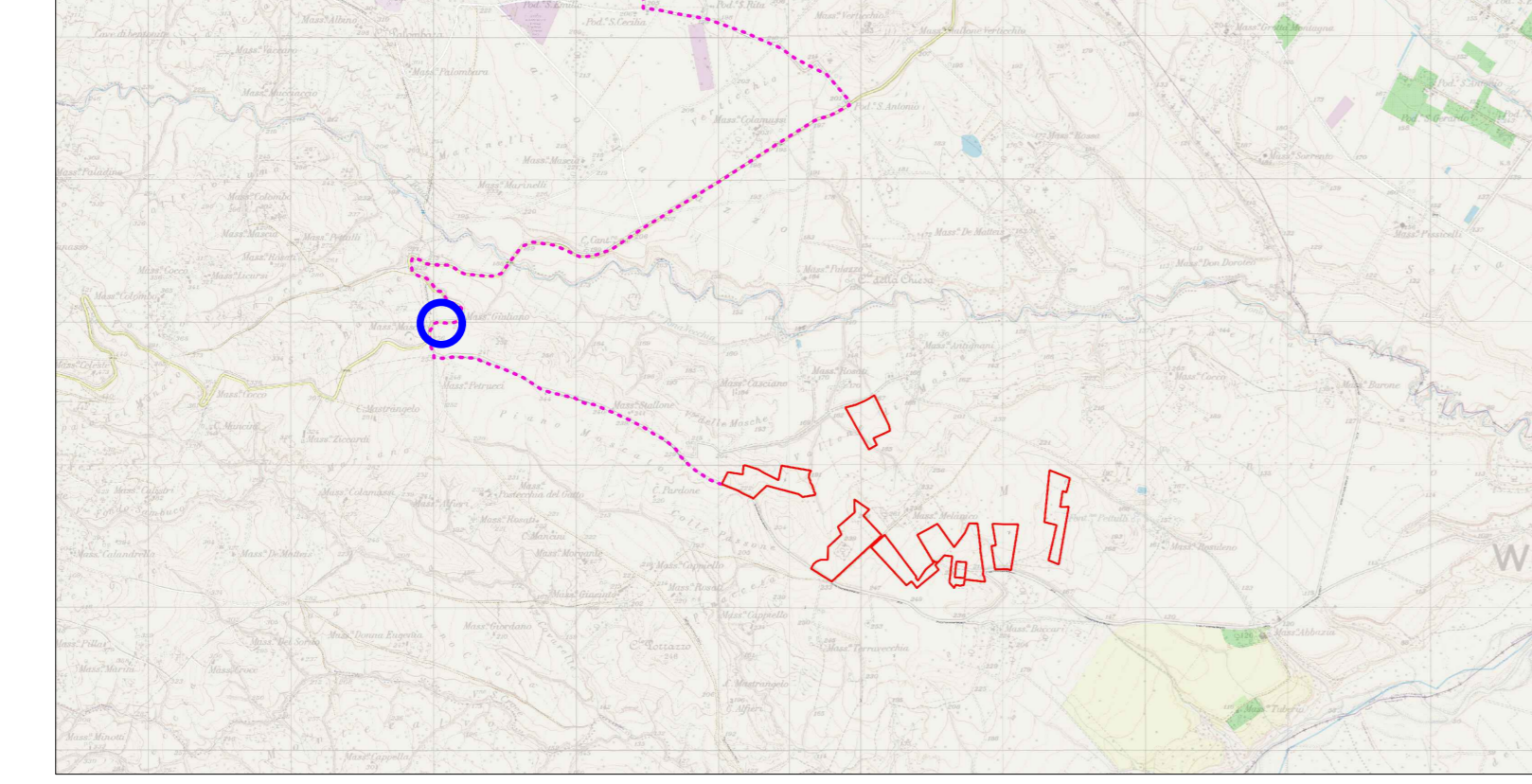


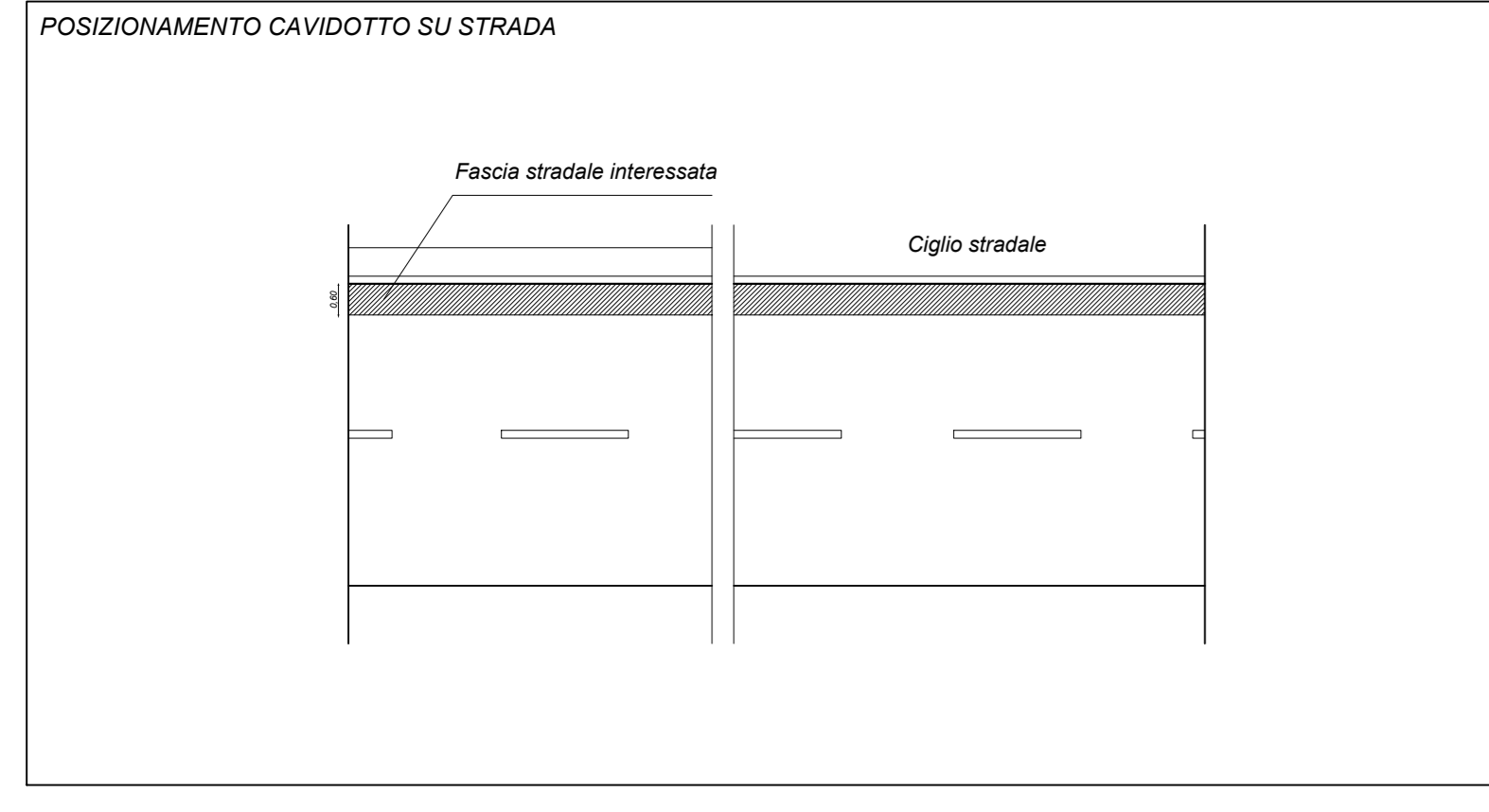
Foto 5



Inquadramento cartografico



Pianta



Sezione

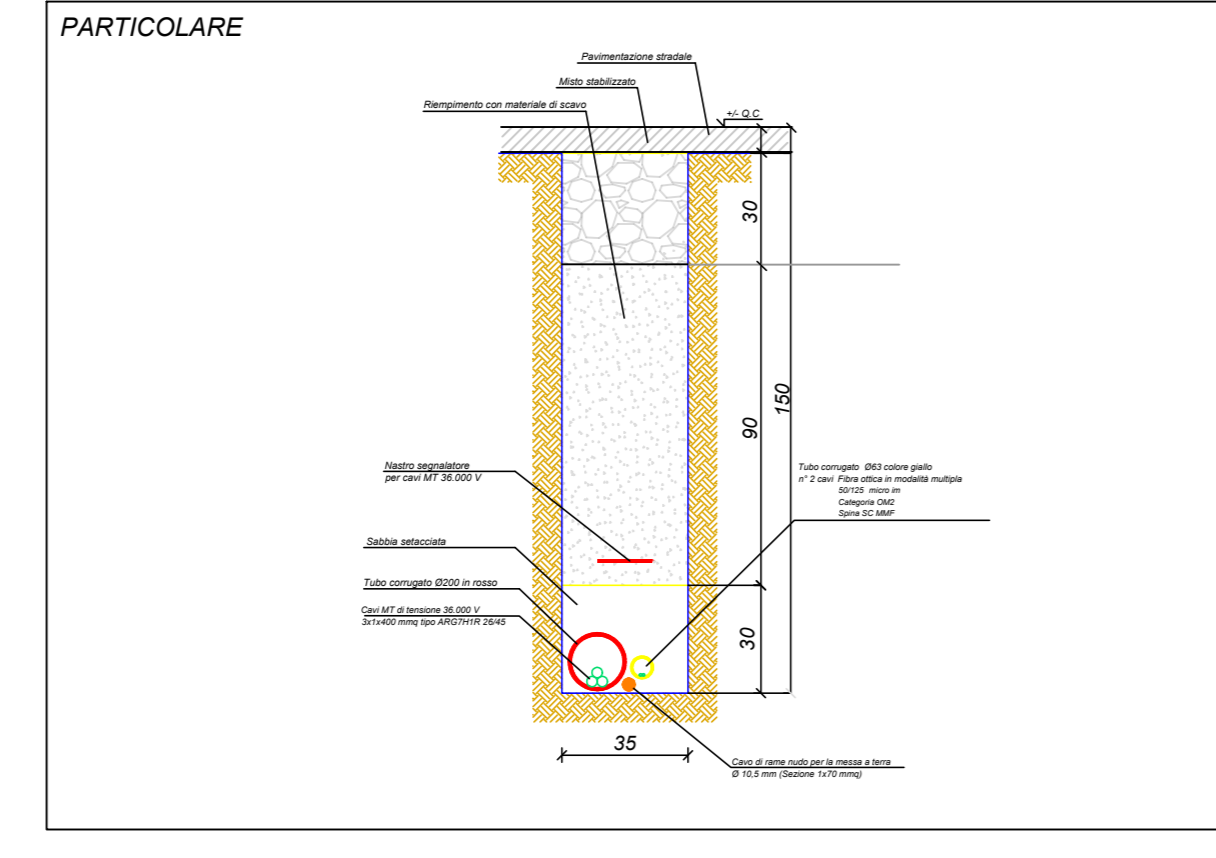
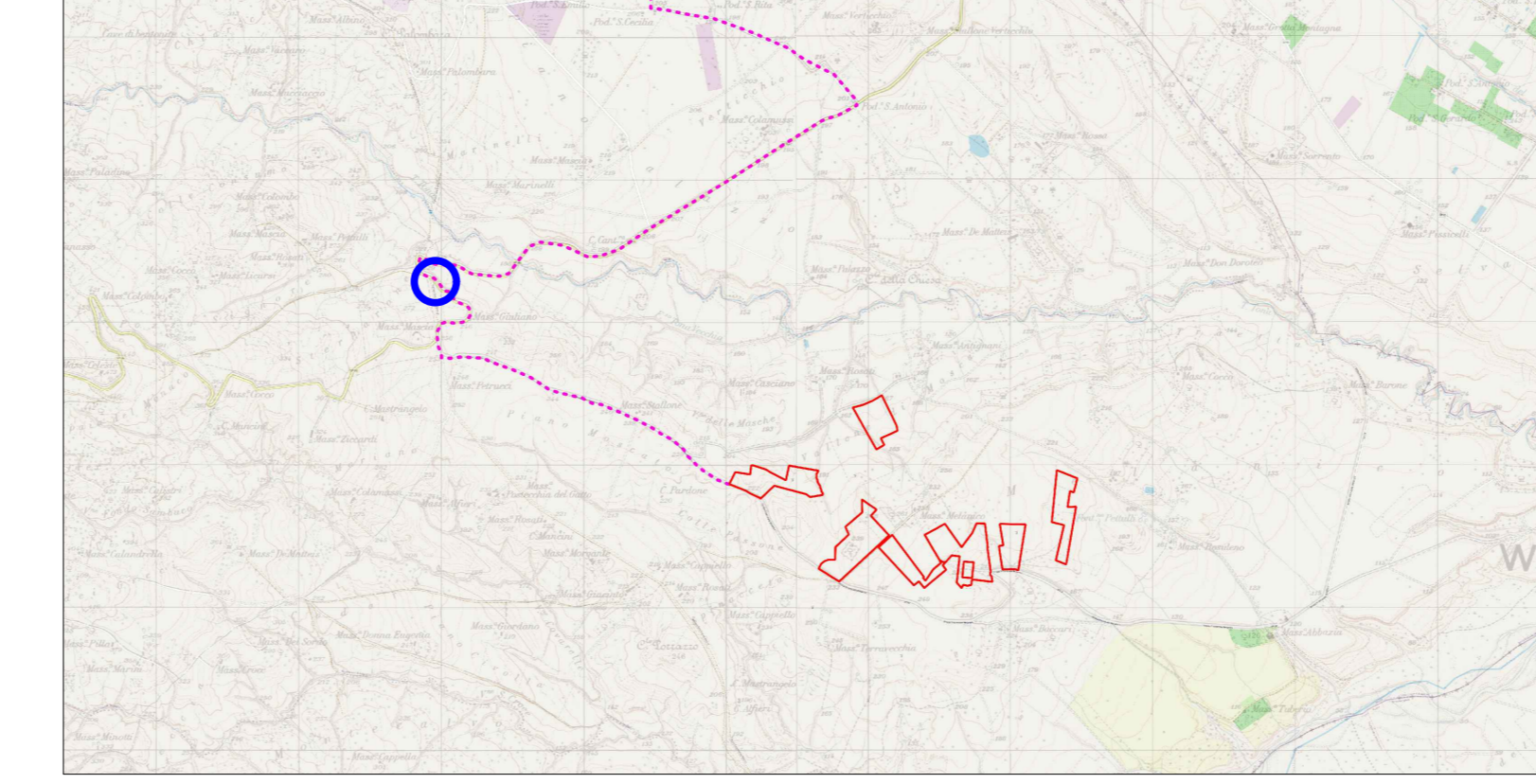


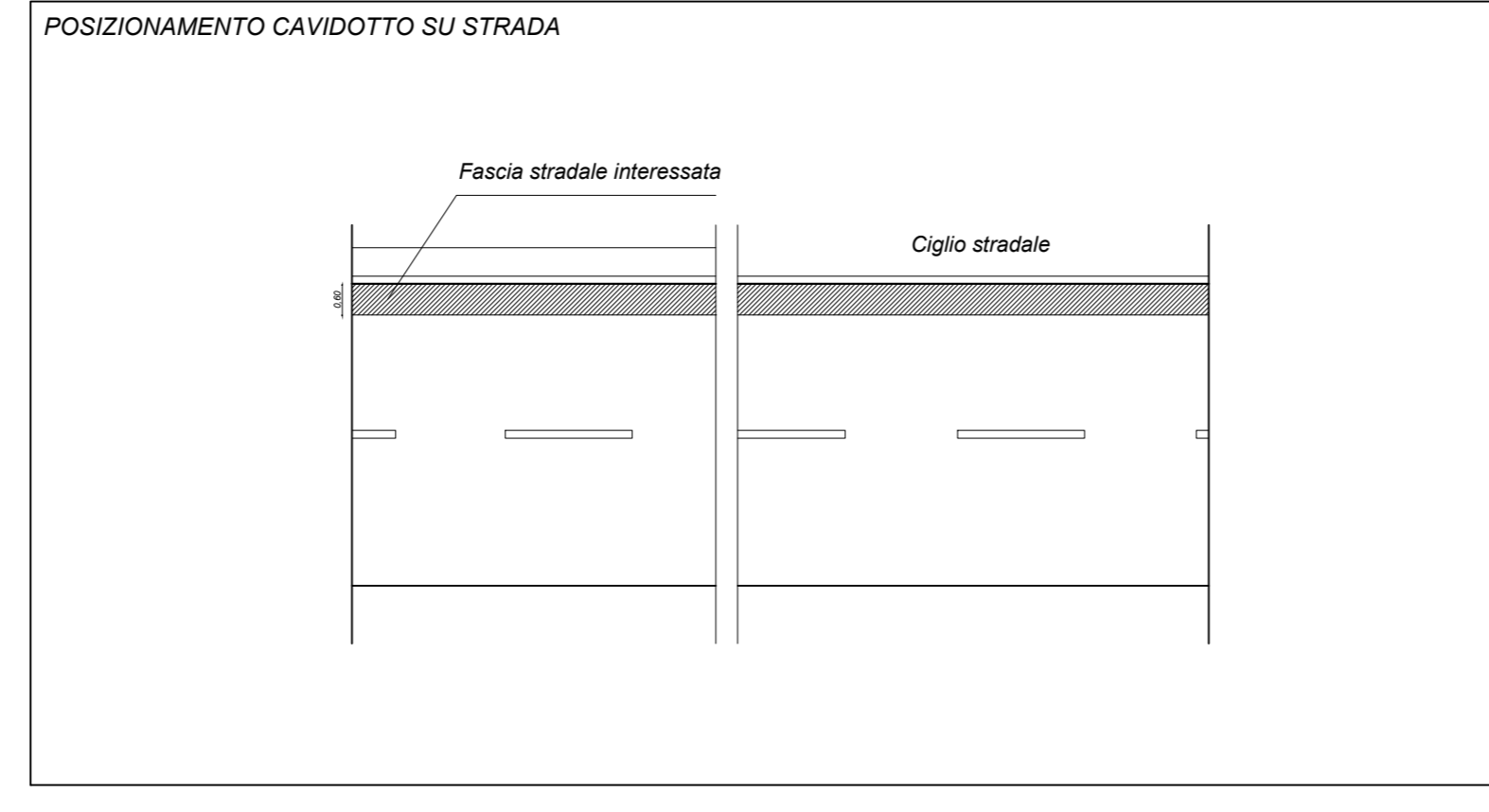
Foto 6



Inquadramento cartografico



Pianta



Sezione

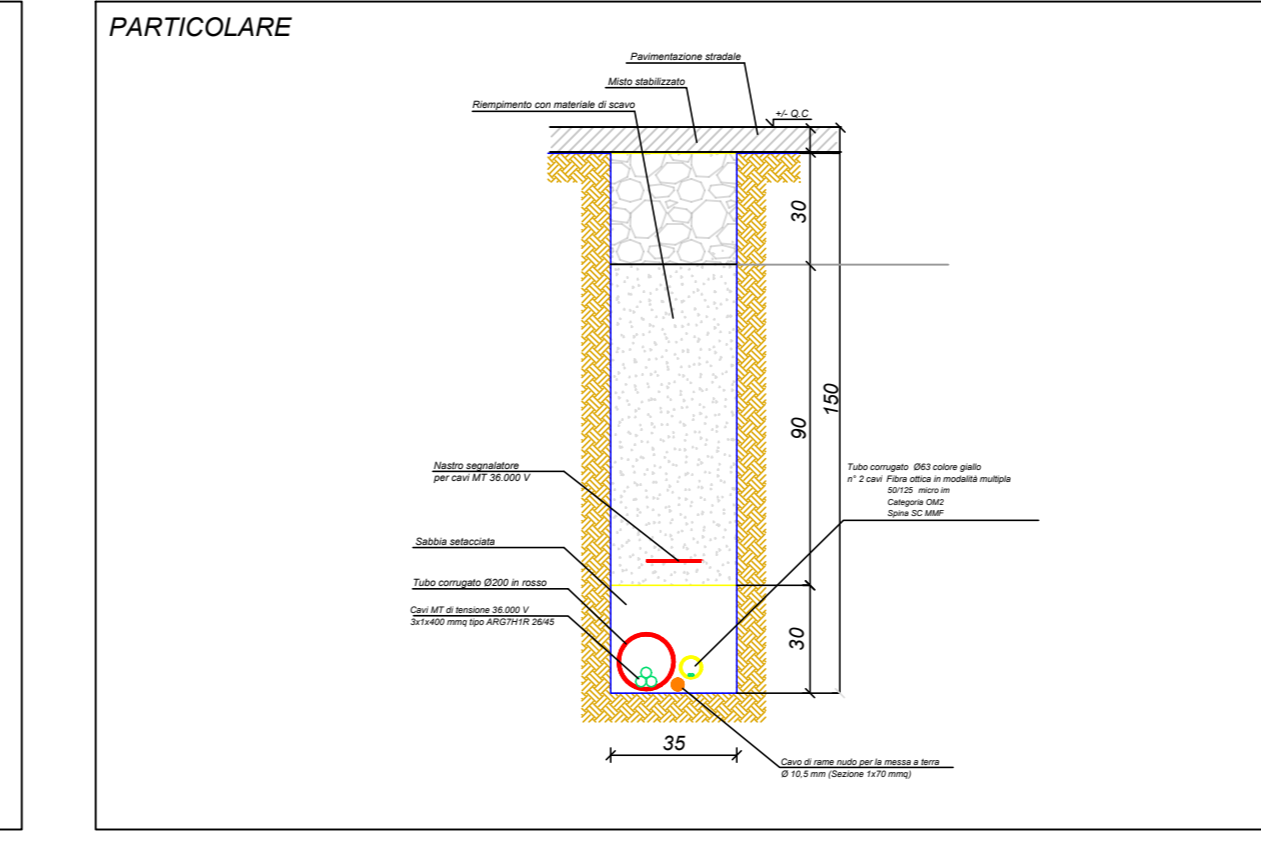
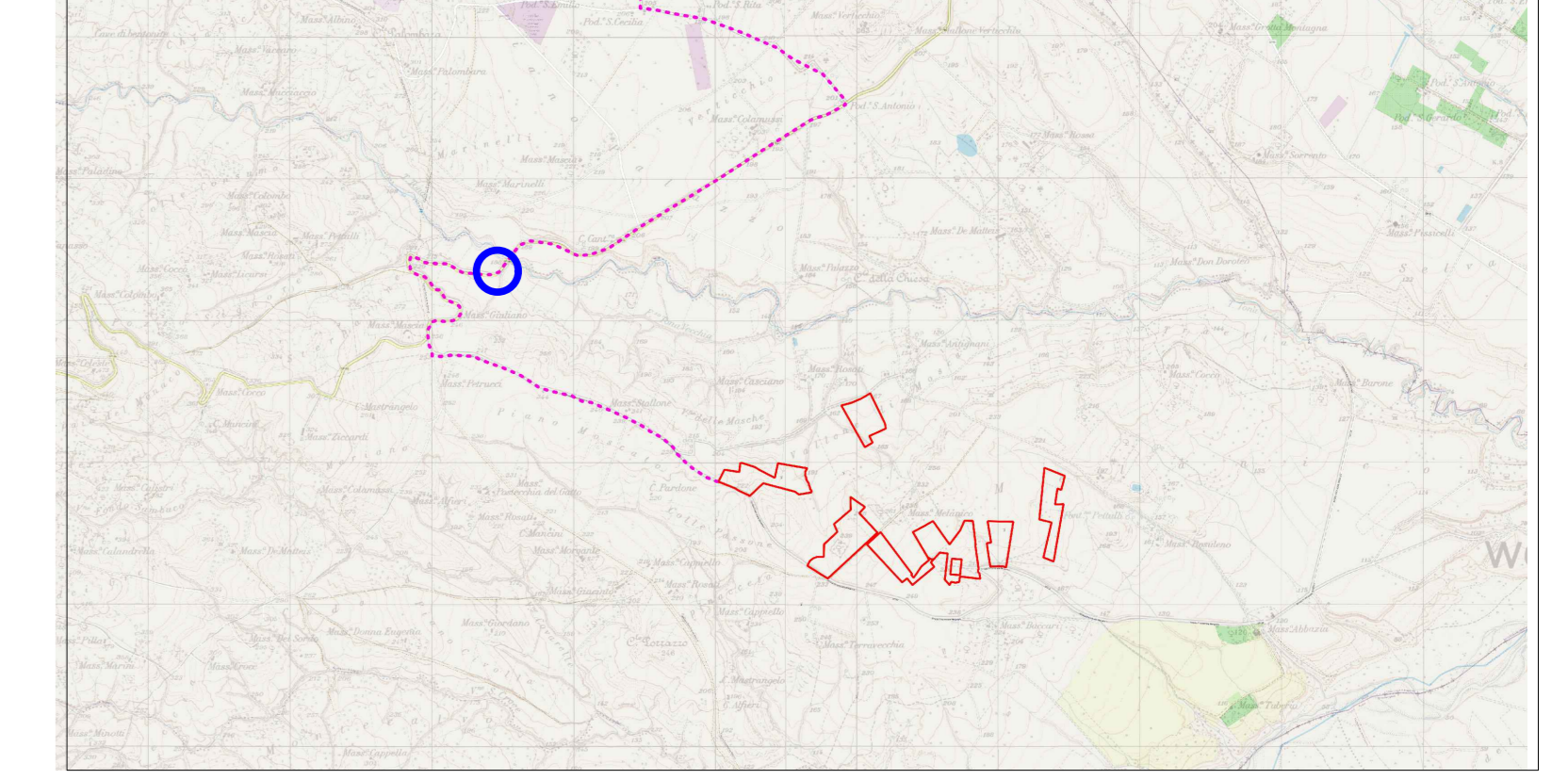


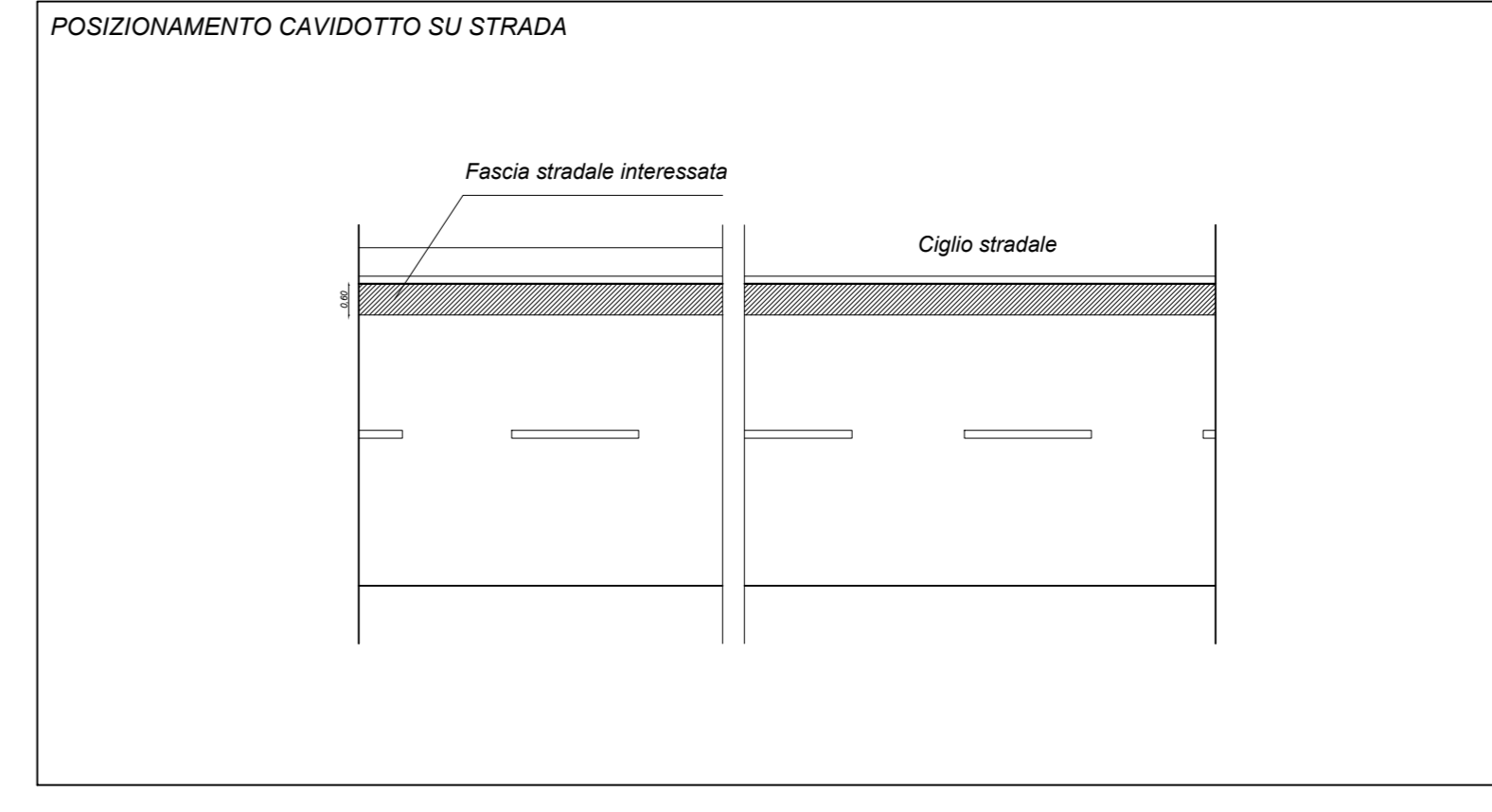
Foto 7



Inquadramento cartografico



Pianta



Sezione

