

REGIONE MOLISE
COMUNE DI S.CROCE di MAGLIANO
 Provincia di Campobasso

REALIZZAZIONE E GESTIONE DI UN IMPIANTO FOTOVOLTAICO DELLA POTENZA NOMINALE DI 46.00 MW CON RELATIVE OPERE DI CONNESSIONE ALLA RETE ELETTRICA NAZIONALE

PROGETTISTA PROSPONENTE
Expand
 - Salerno -
 Direttore Tecnico
 ing. Teodoro Bottegari

PROGETTO
PROGETTO DEFINITIVO
CARTA DELLE INTERFERENZE

via Fratelli Ruspoli 8 00198 Roma

soc. ARAN 2 srl

elaborato: febbraio 2023
 data: Maggio 2023
 Varie
 AD
F_4.1.A

Individuazione delle interferenze lungo il percorso del cavidotto di connessione

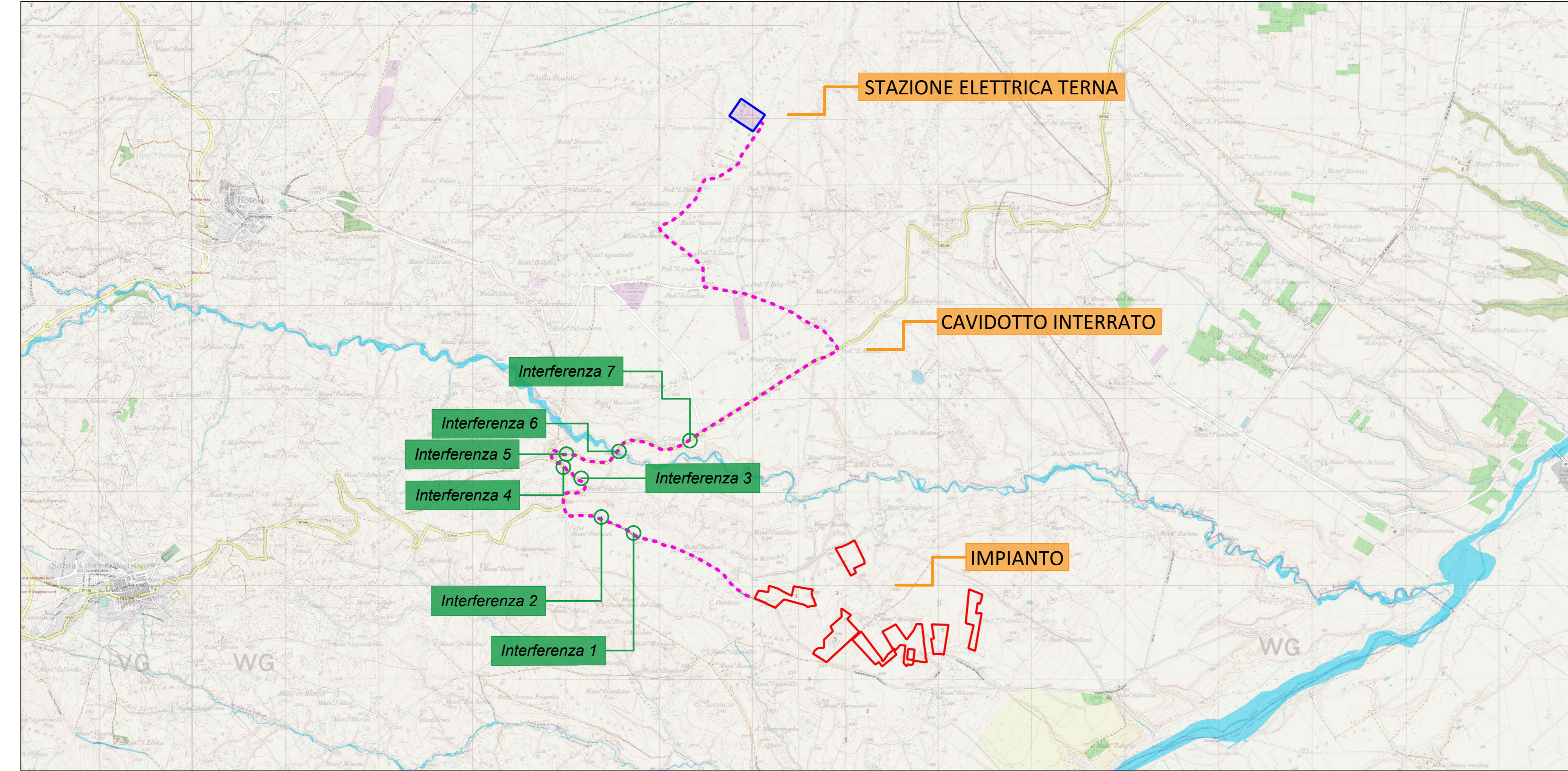
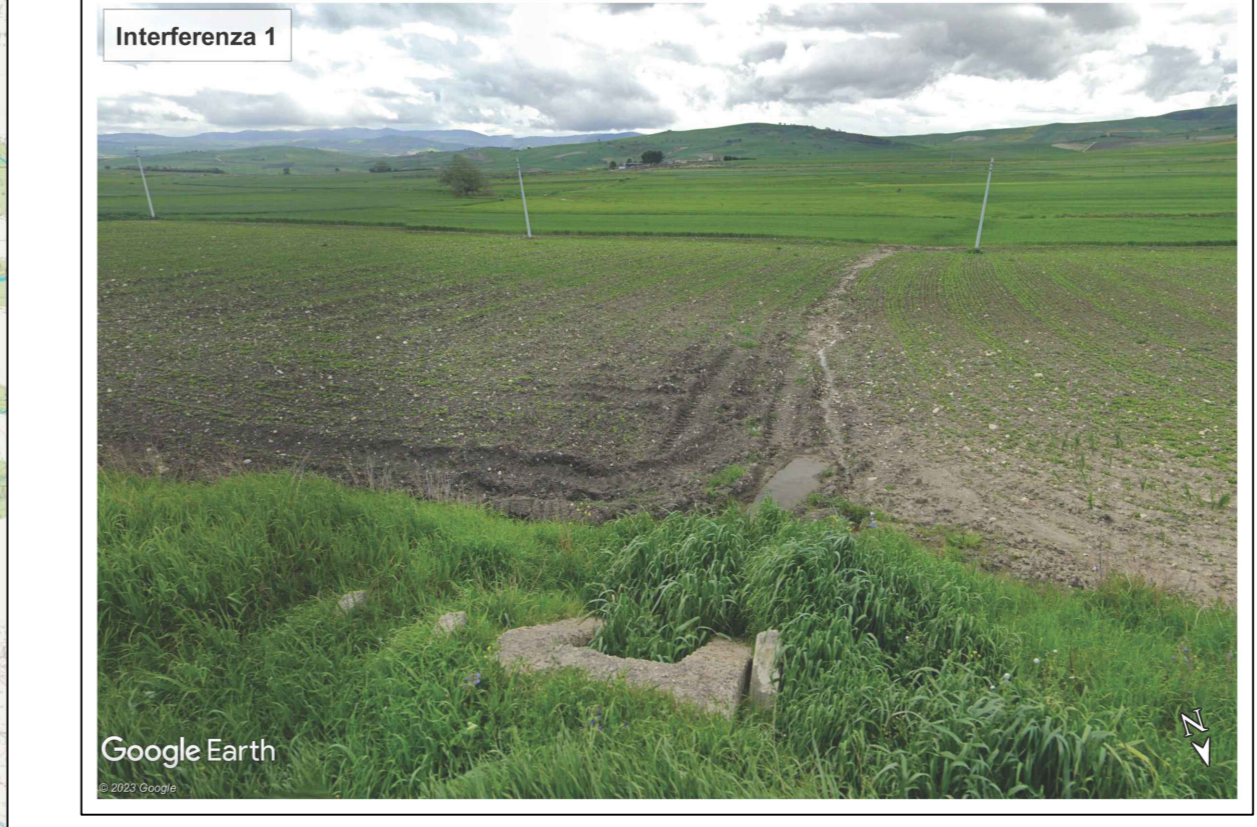
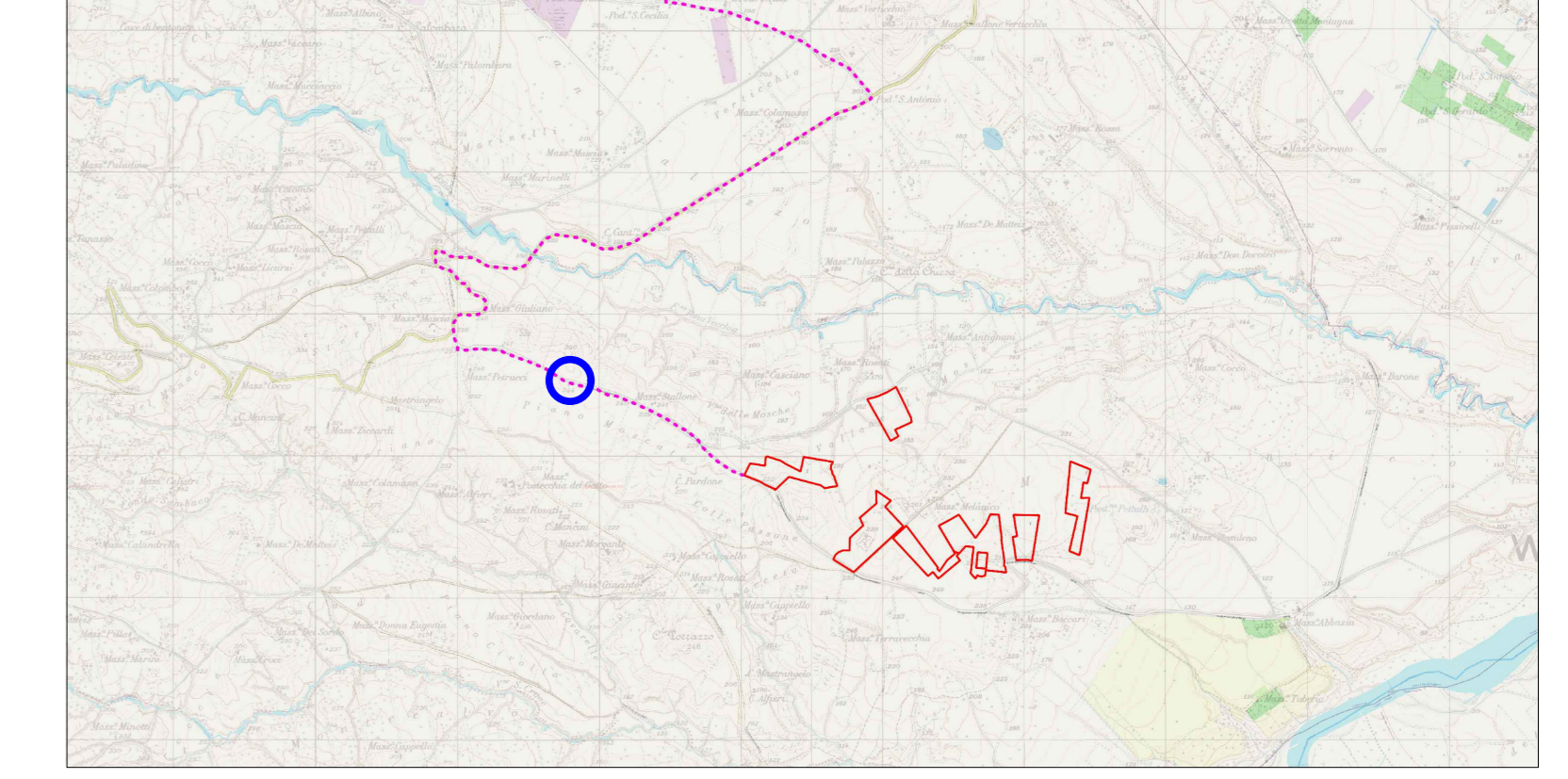


Foto - Interferenza 1



Inquadramento cartografico



Ortofoto



Pianta e sezione

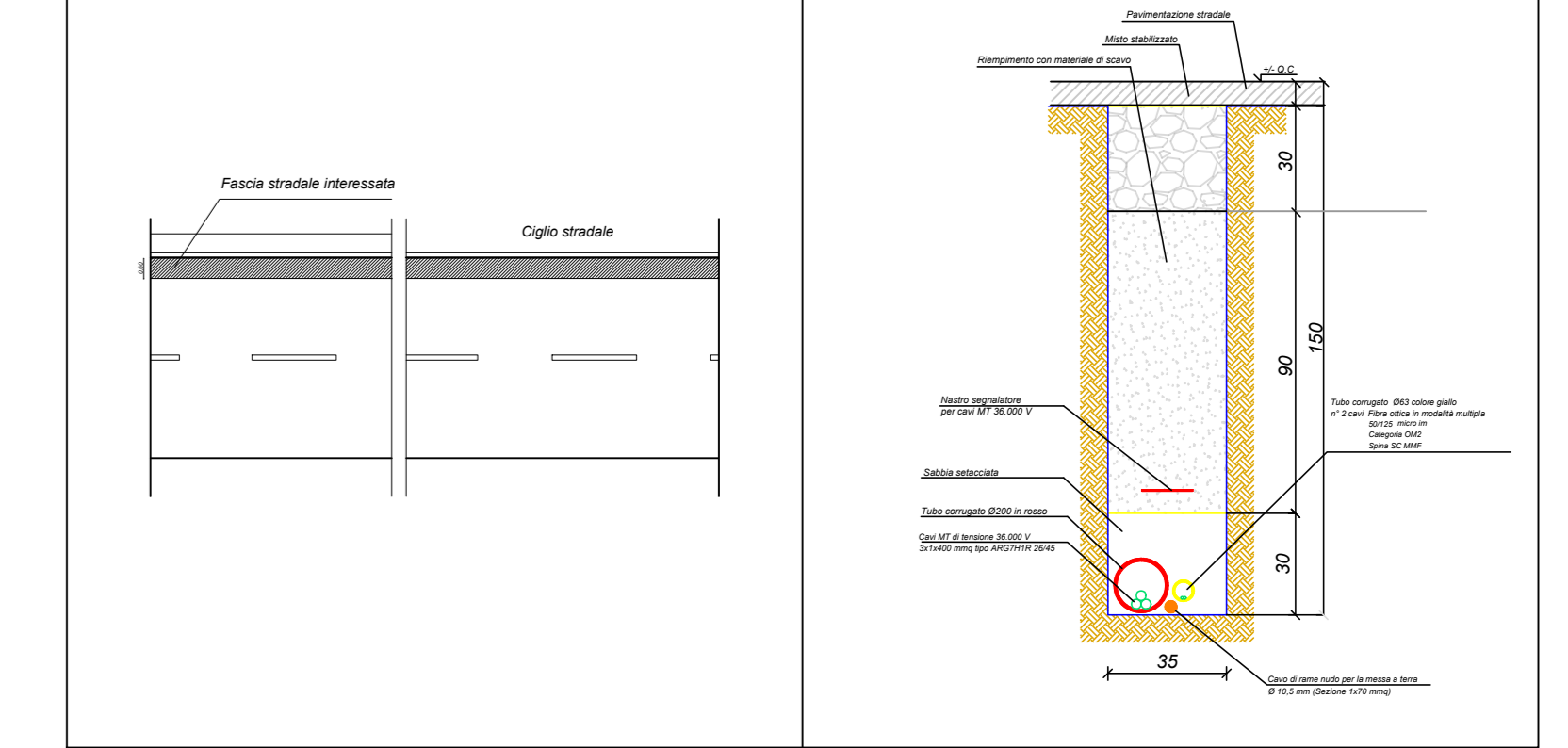
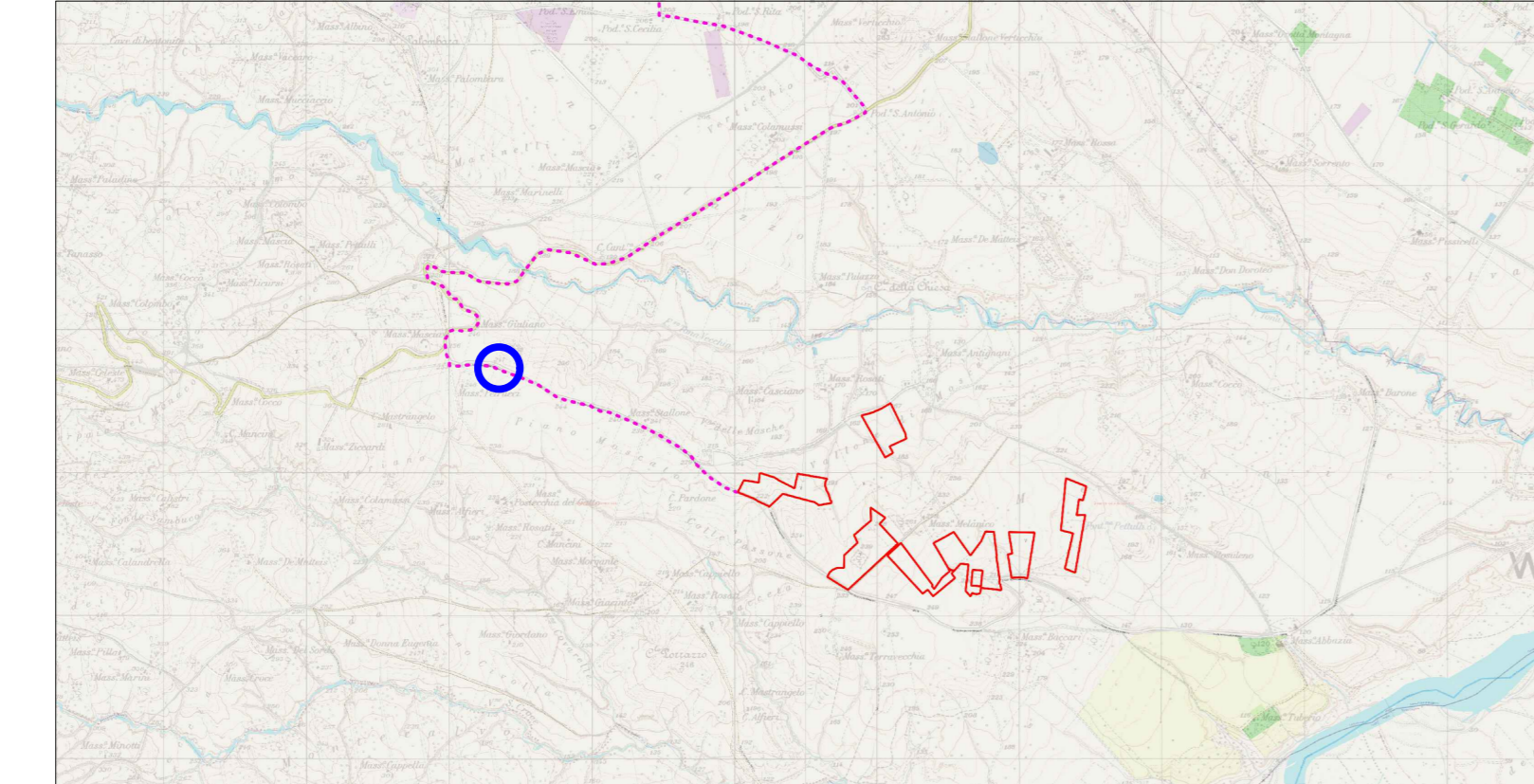


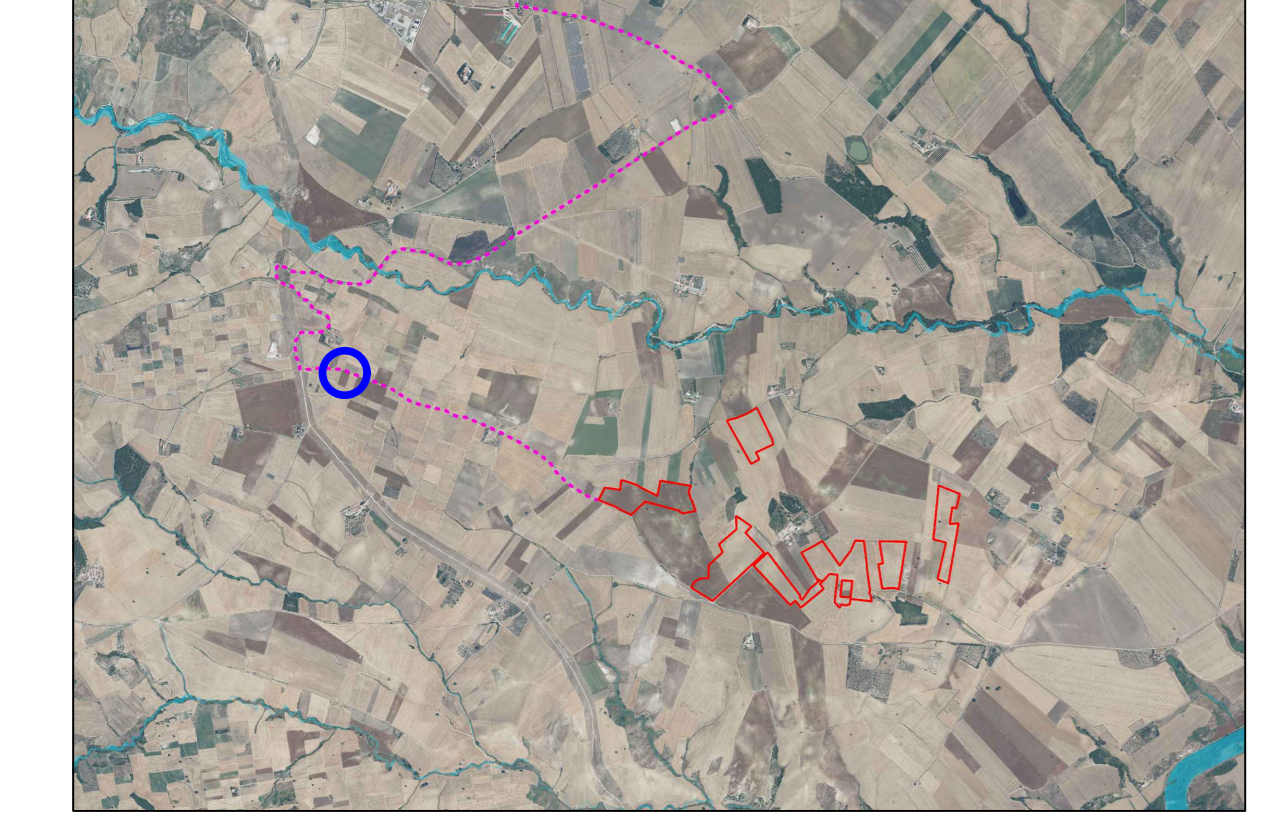
Foto - Interferenza 2



Inquadramento cartografico



Ortofoto



Pianta e sezione

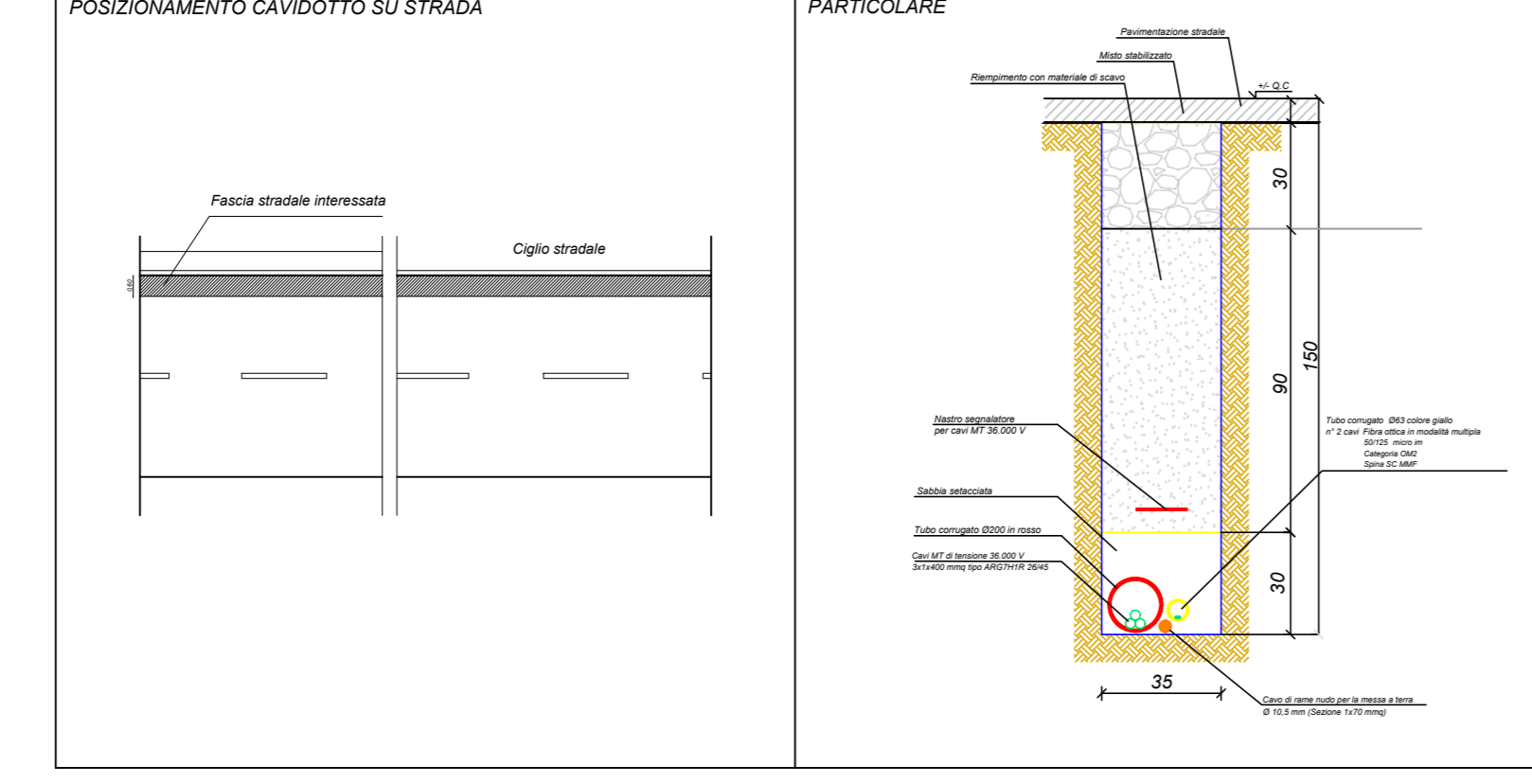
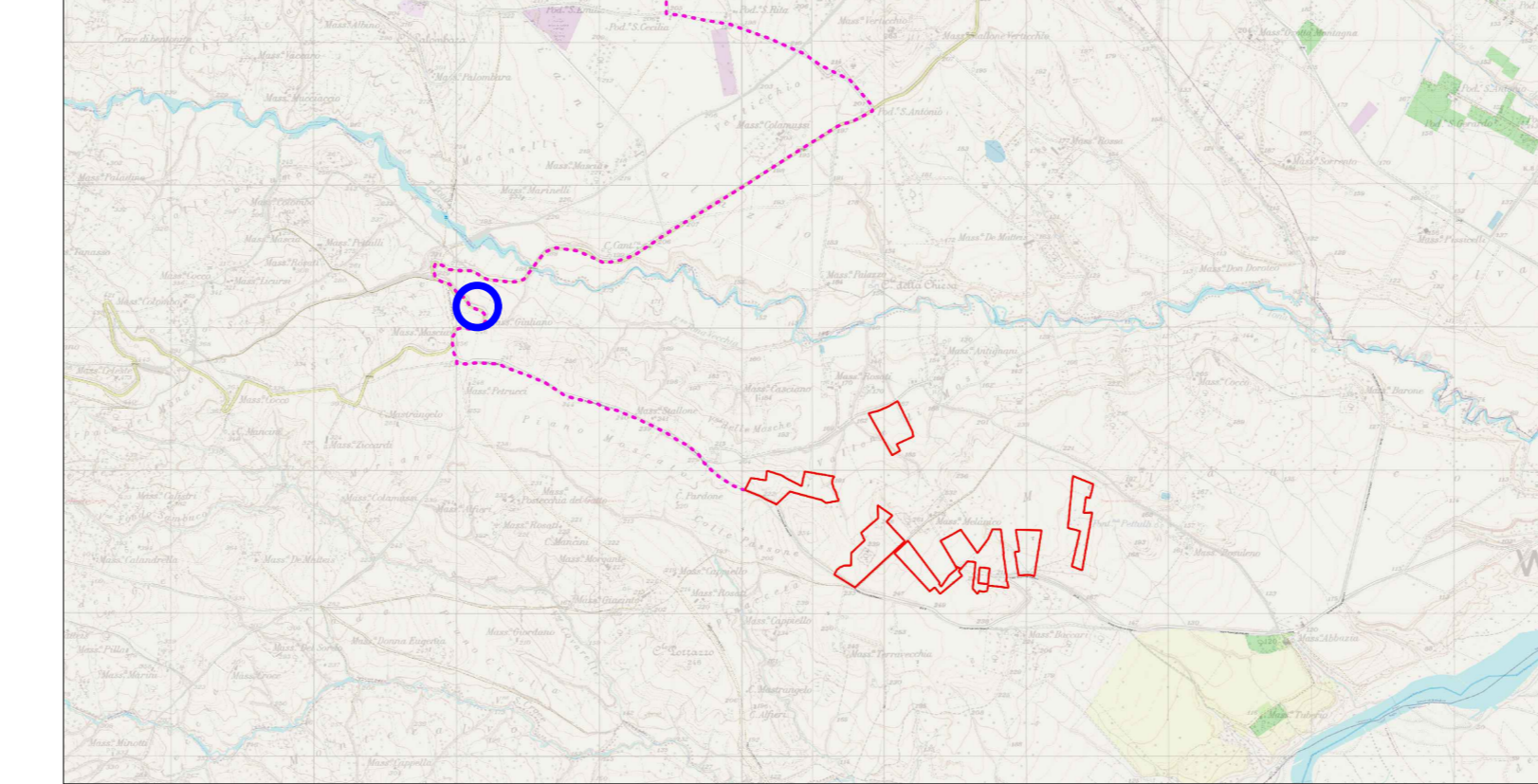


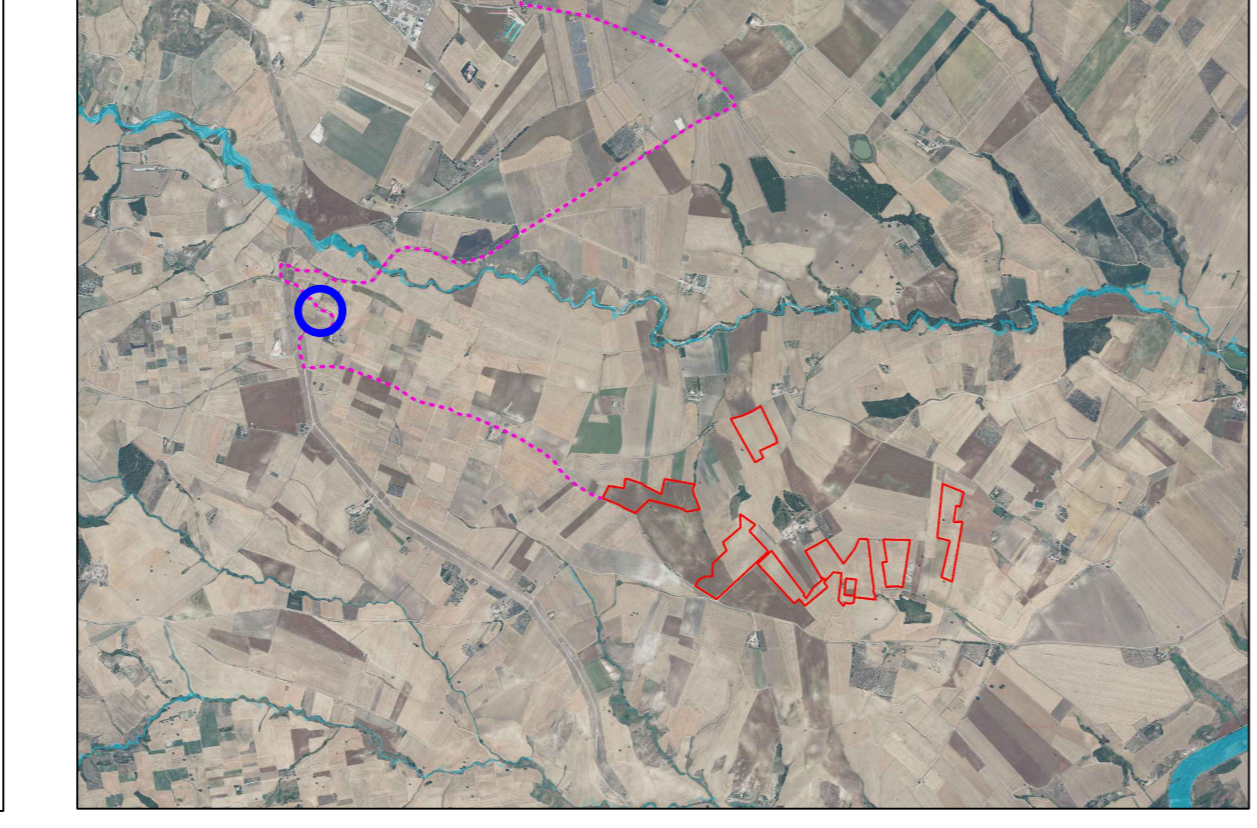
Foto - Interferenza 3



Inquadramento cartografico



Ortofoto



Pianta e sezione

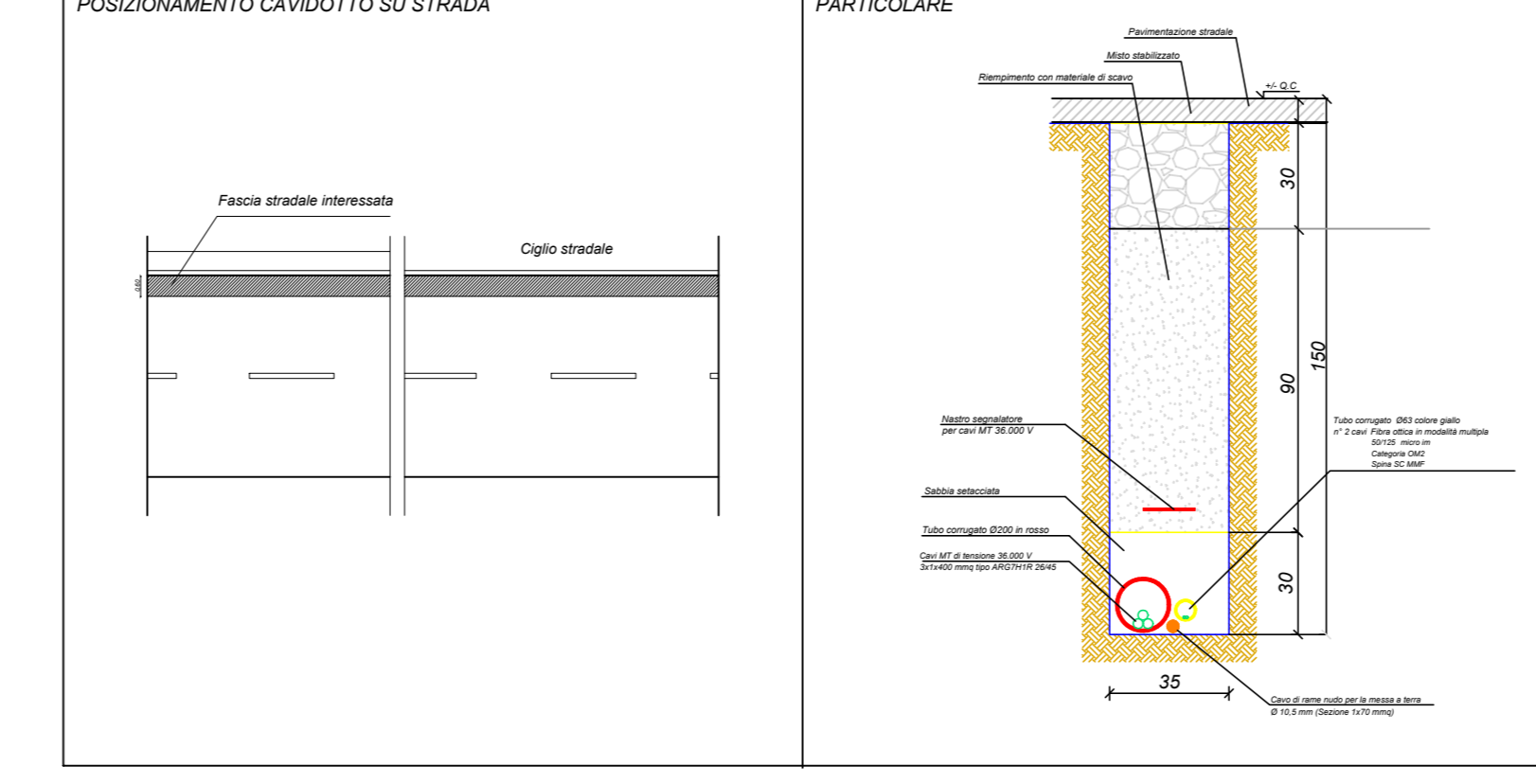
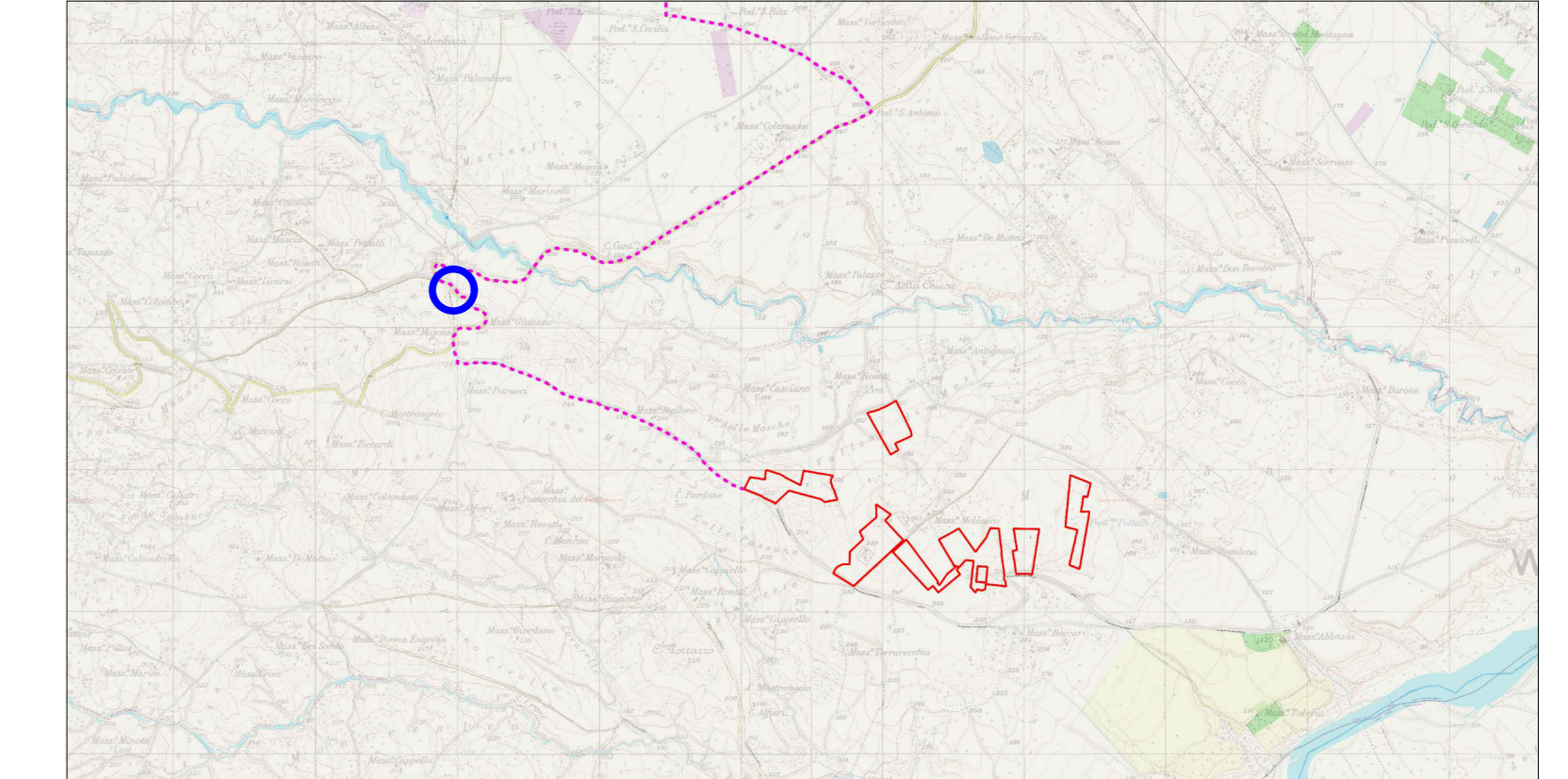


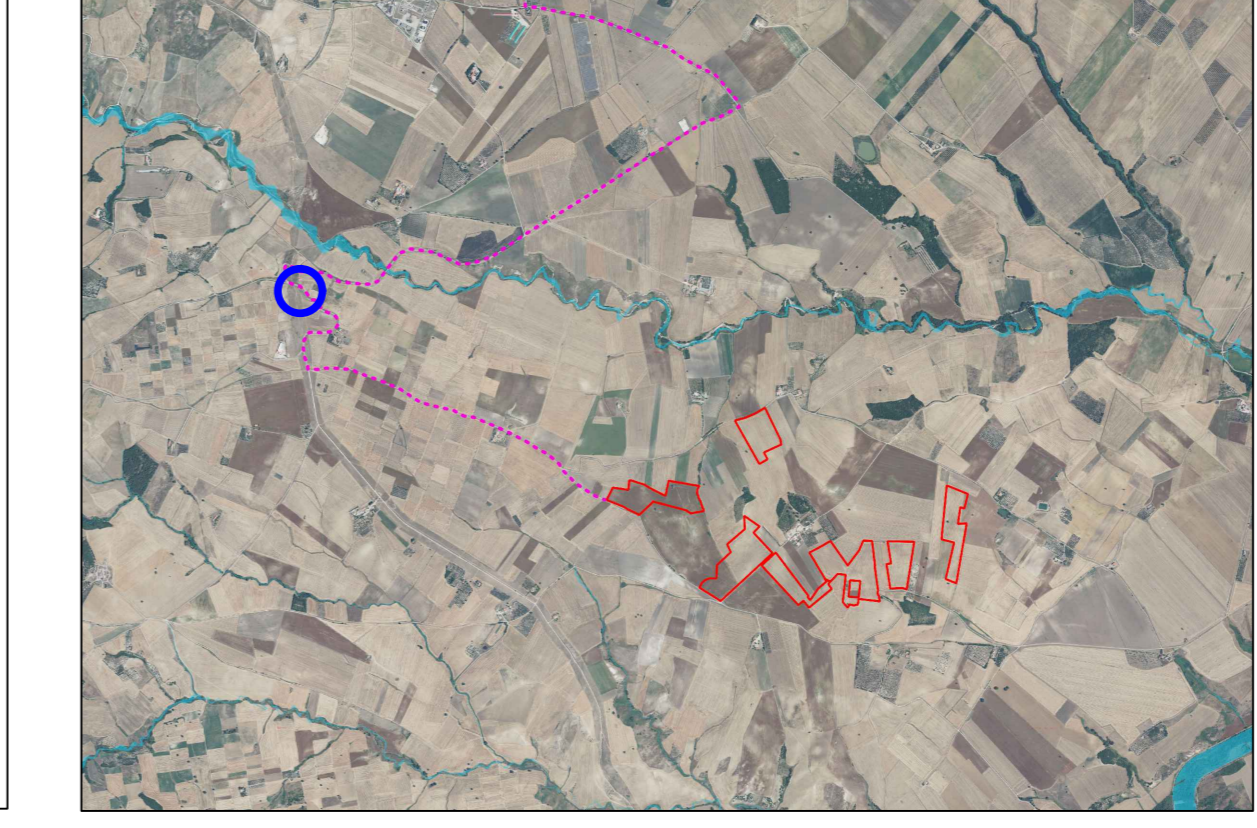
Foto - Interferenza 4



Inquadramento cartografico



Ortofoto



Pianta e sezione

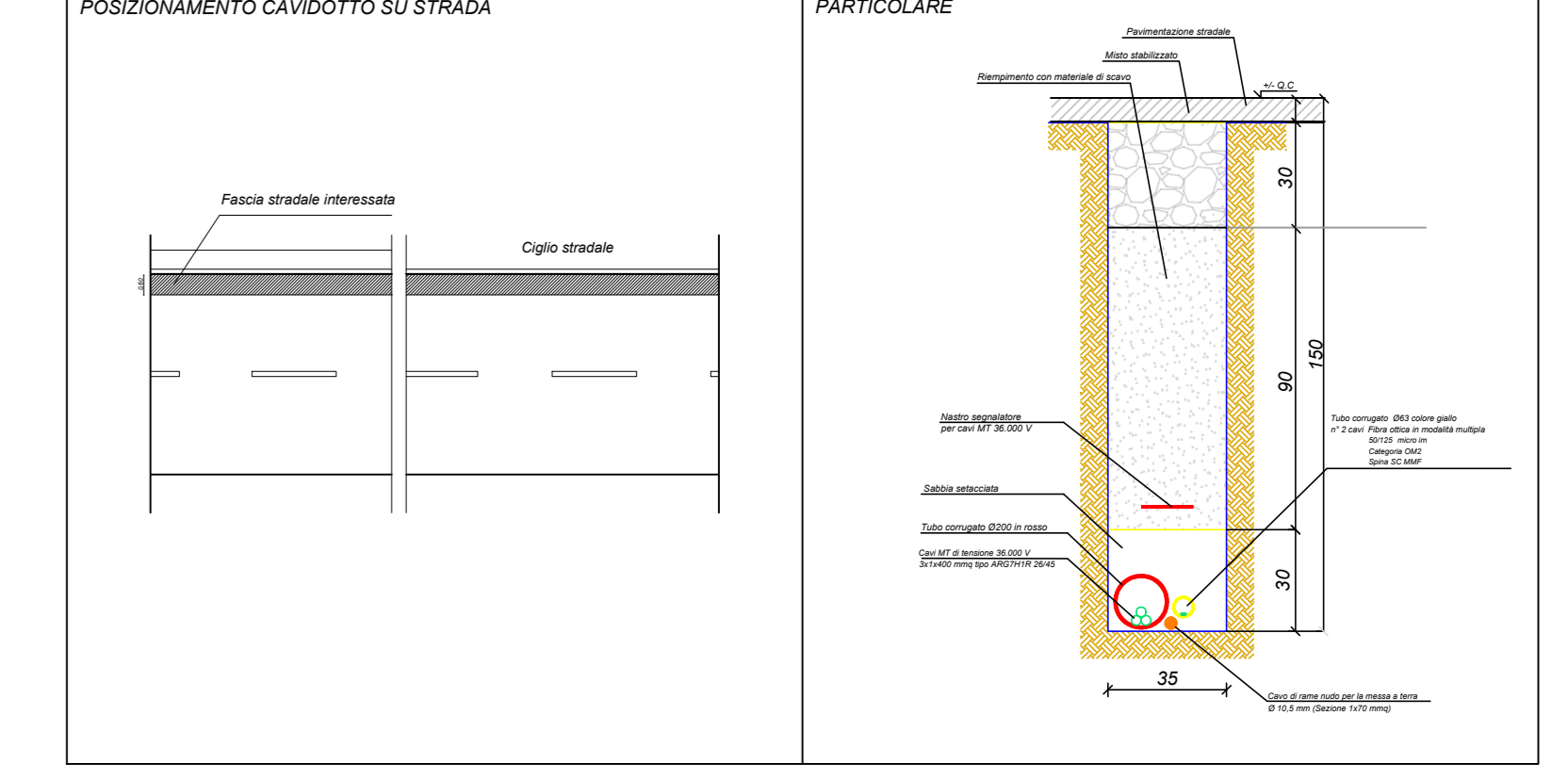
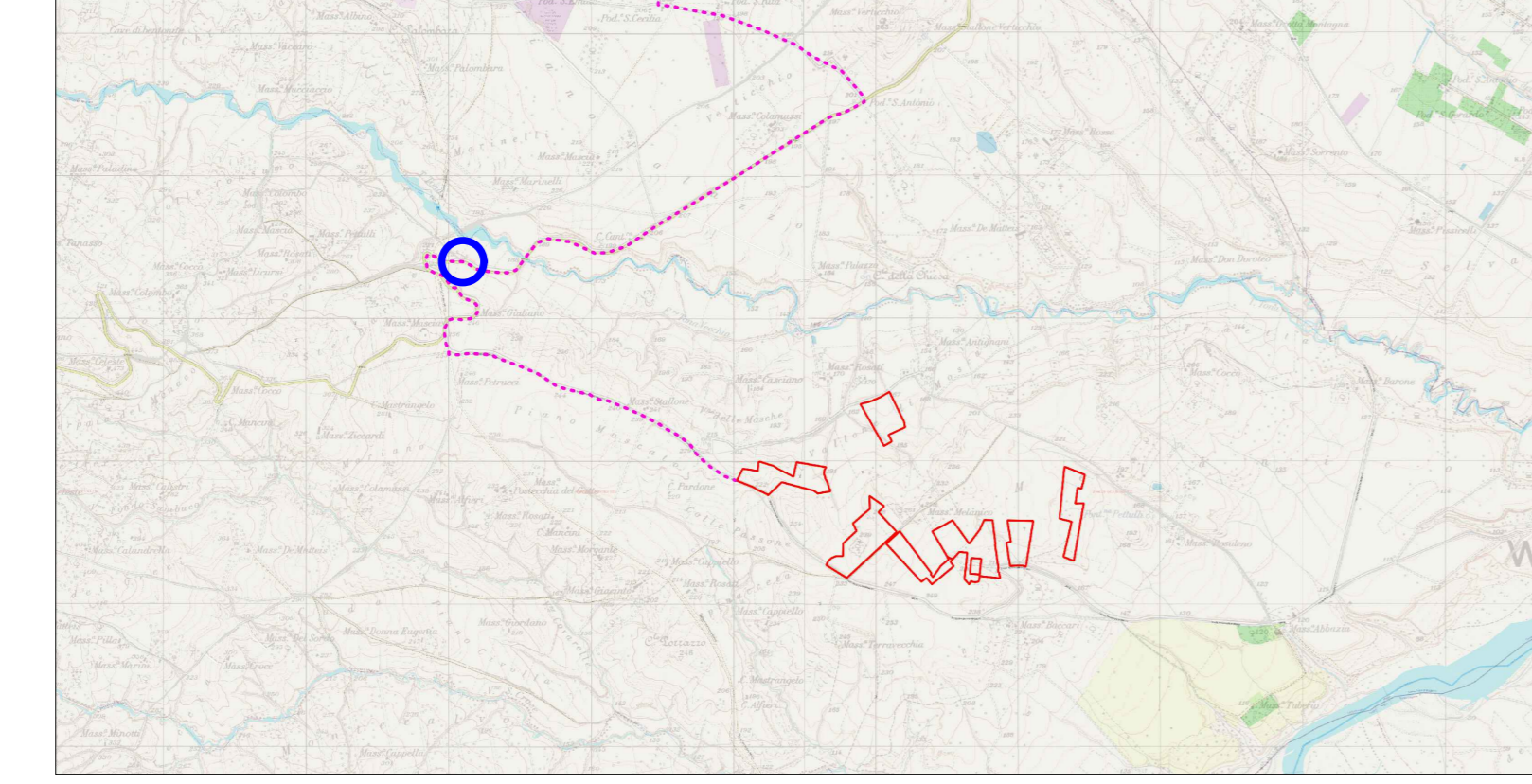


Foto - Interferenza 5



Inquadramento cartografico



Ortofoto



Pianta e sezione

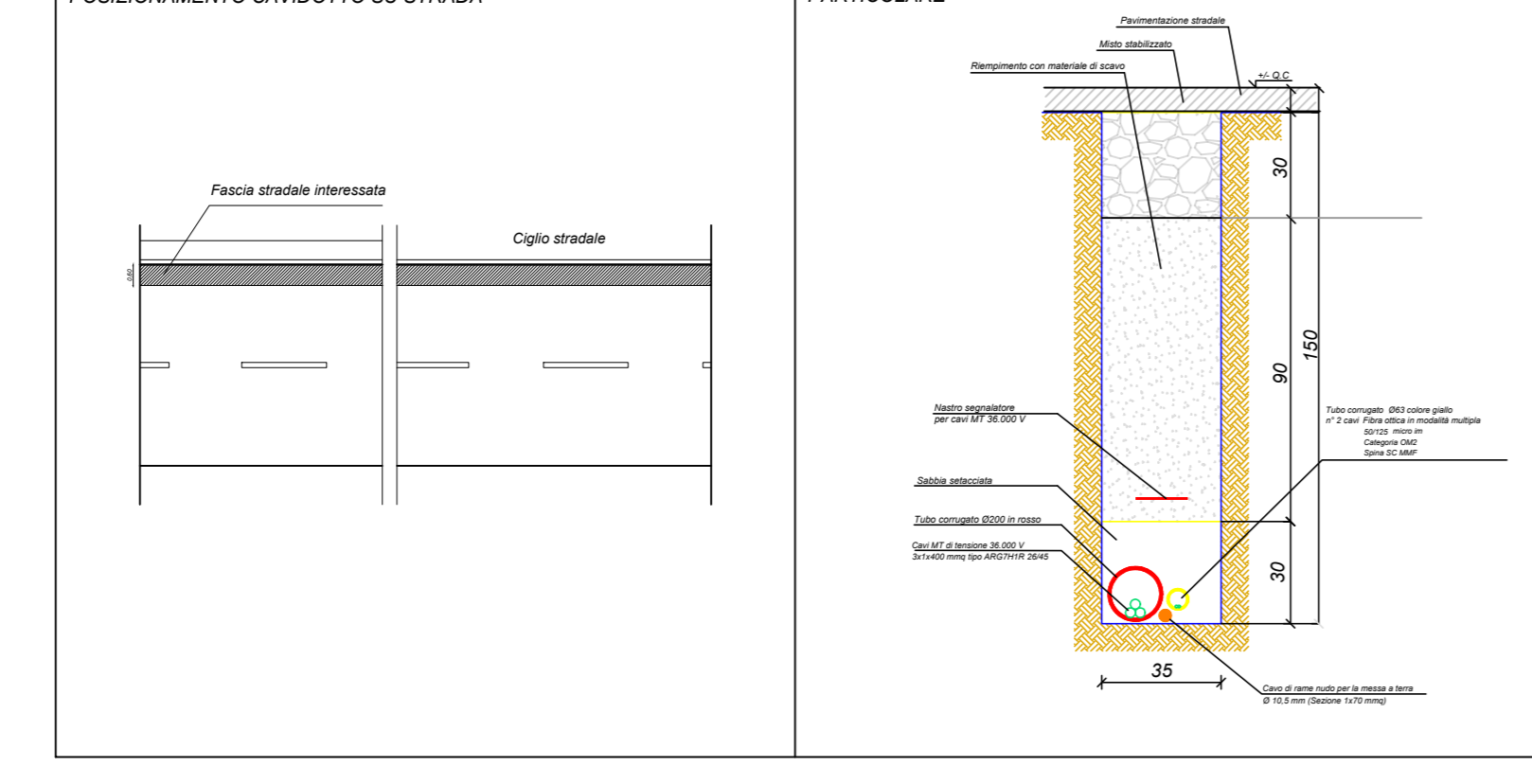
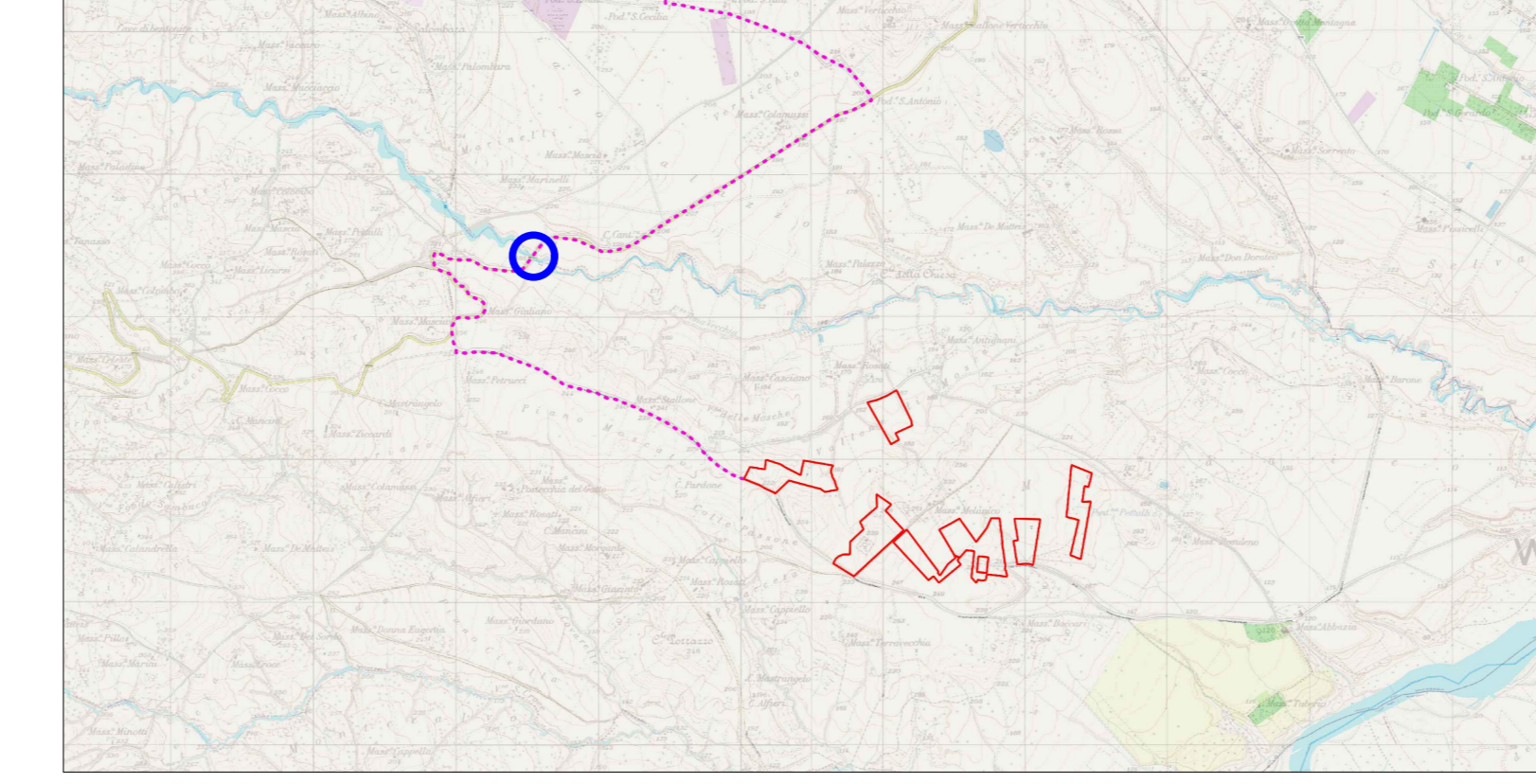


Foto - Interferenza 6



Inquadramento cartografico



Ortofoto



Pianta e sezione

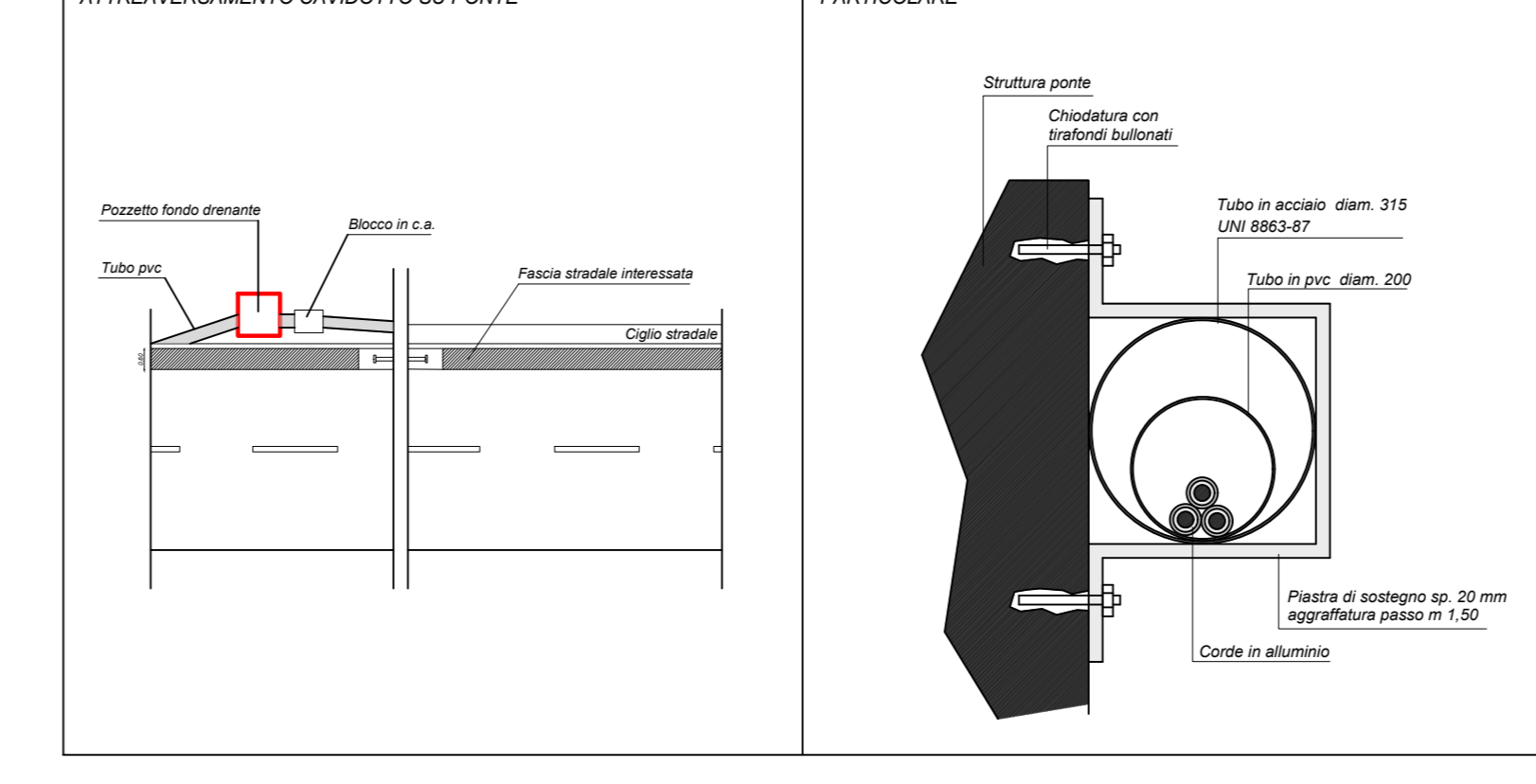
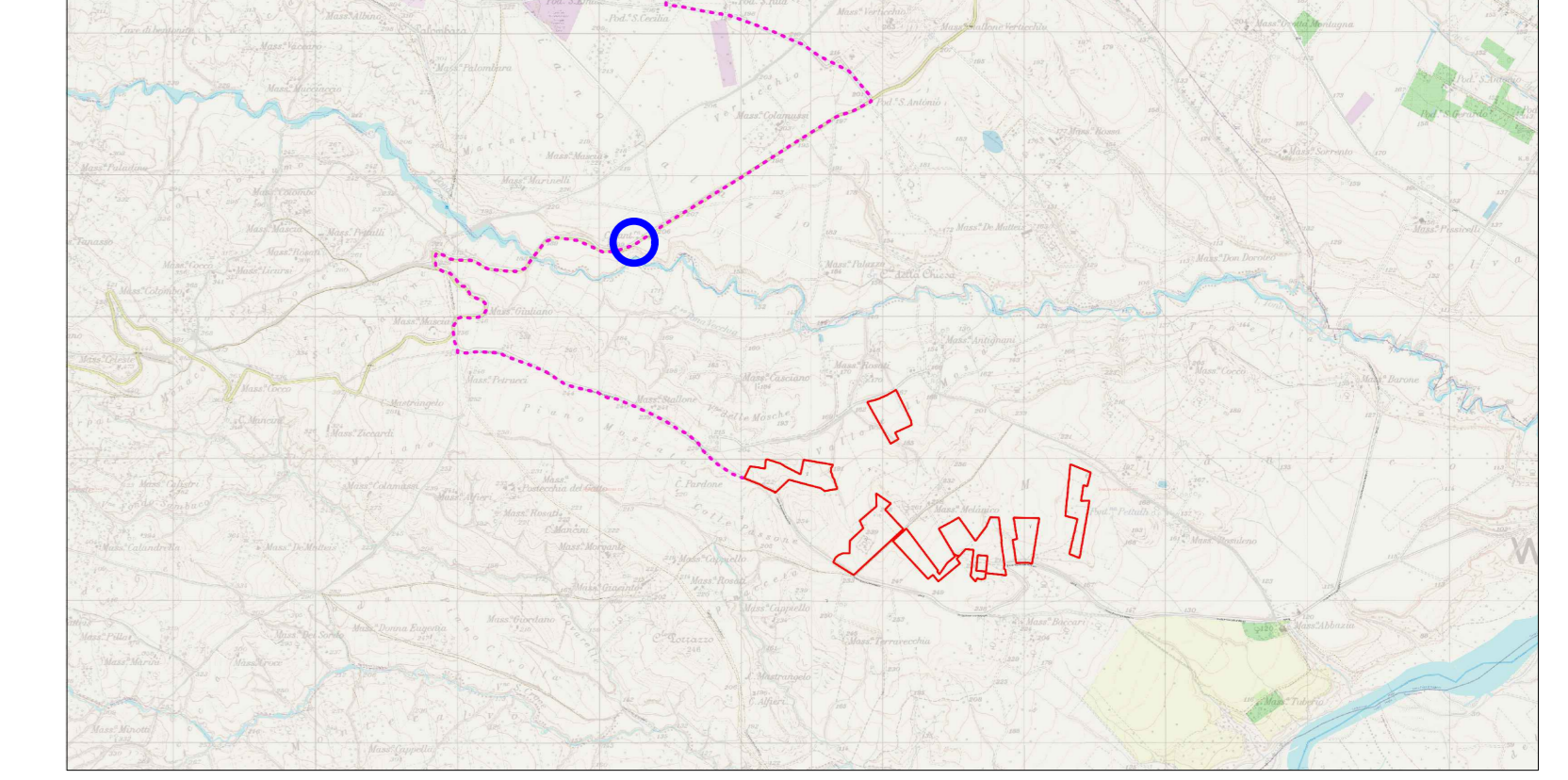


Foto - Interferenza 7



Inquadramento cartografico



Ortofoto



Pianta e sezione

