

**REGIONE MOLISE**  
**COMUNE DI S.CROCE di MAGLIANO**  
 Provincia di Campobasso

**REALIZZAZIONE E GESTIONE DI UN IMPIANTO FOTOVOLTAICO DELLA POTENZA NOMINALE DI 46.00 MW CON RELATIVE OPERE DI CONNESSIONE ALLA RETE ELETTRICA NAZIONALE**

PROGETTISTA: **Expand**  
 - Salerno -  
 Direttore Tecnico: ing. Teodoro Bottegari  
 1914

PROGETTO: **POWER PROJECT**  
 Studio Tecnico  
 geom. Benedetta Guappo

PROGETTO DEFINITIVO  
 CARTA DELLE INTERFERENZE

PROSPETTIVA: **ARAN 2 srl**  
 via Fratelli Ruspoli 8 00198 Roma

elaborato: **F\_4.1.B**  
 maggio 2023

*Individuazione delle interferenze lungo il percorso del cavidotto di connessione*

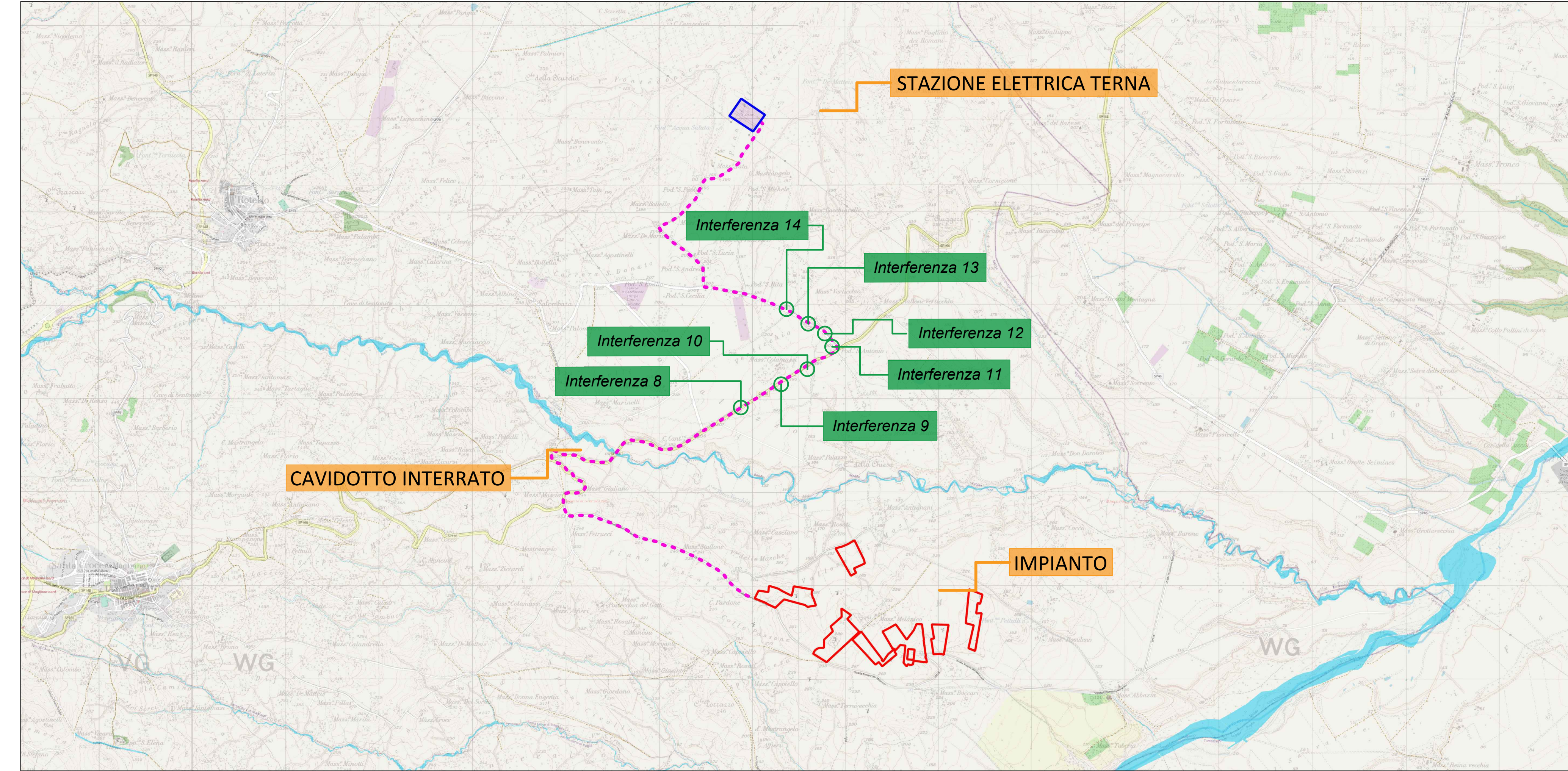
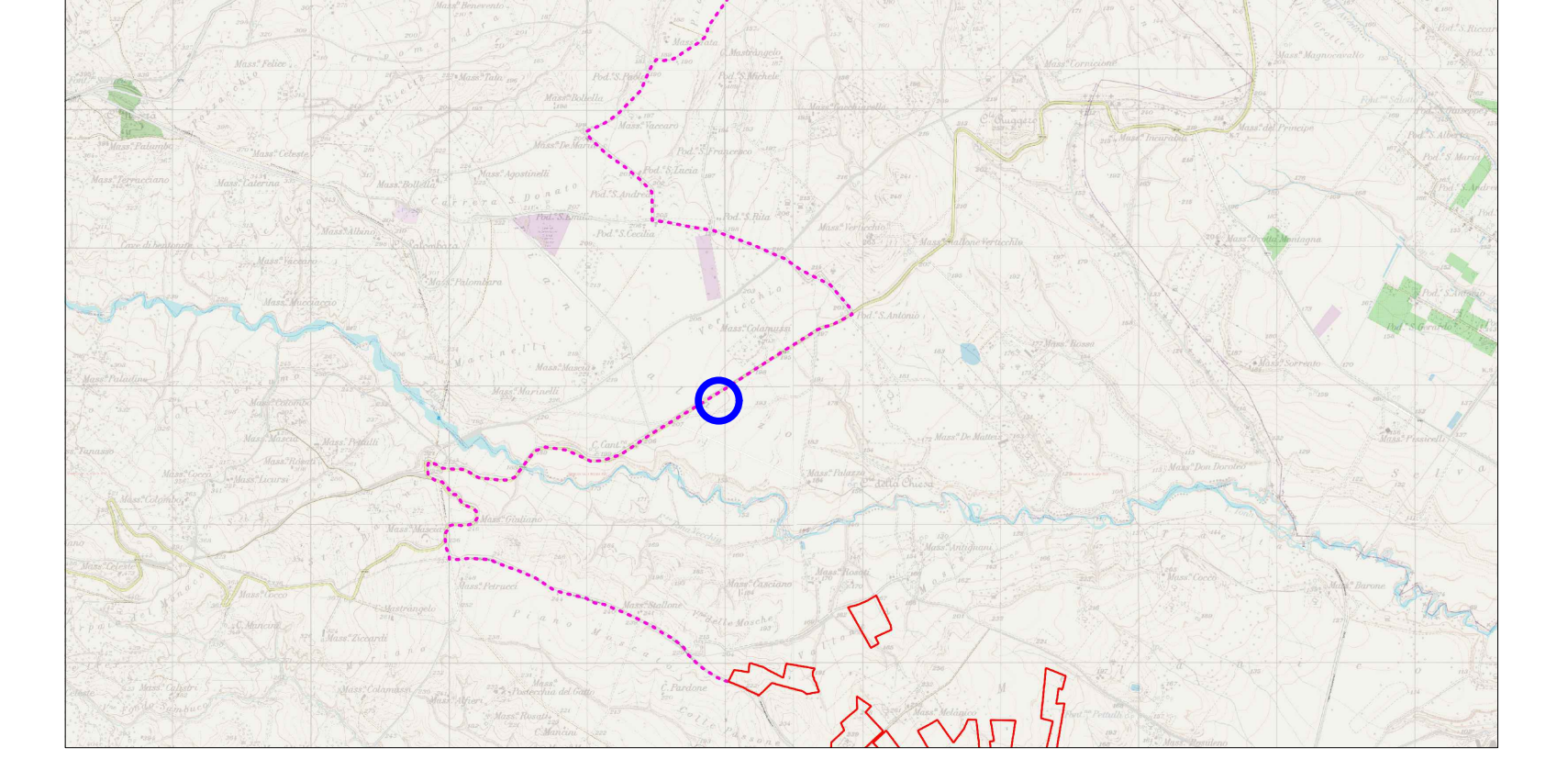


Foto - Interferenza 8



Inquadramento cartografico



Ortofoto



Pianta e sezione

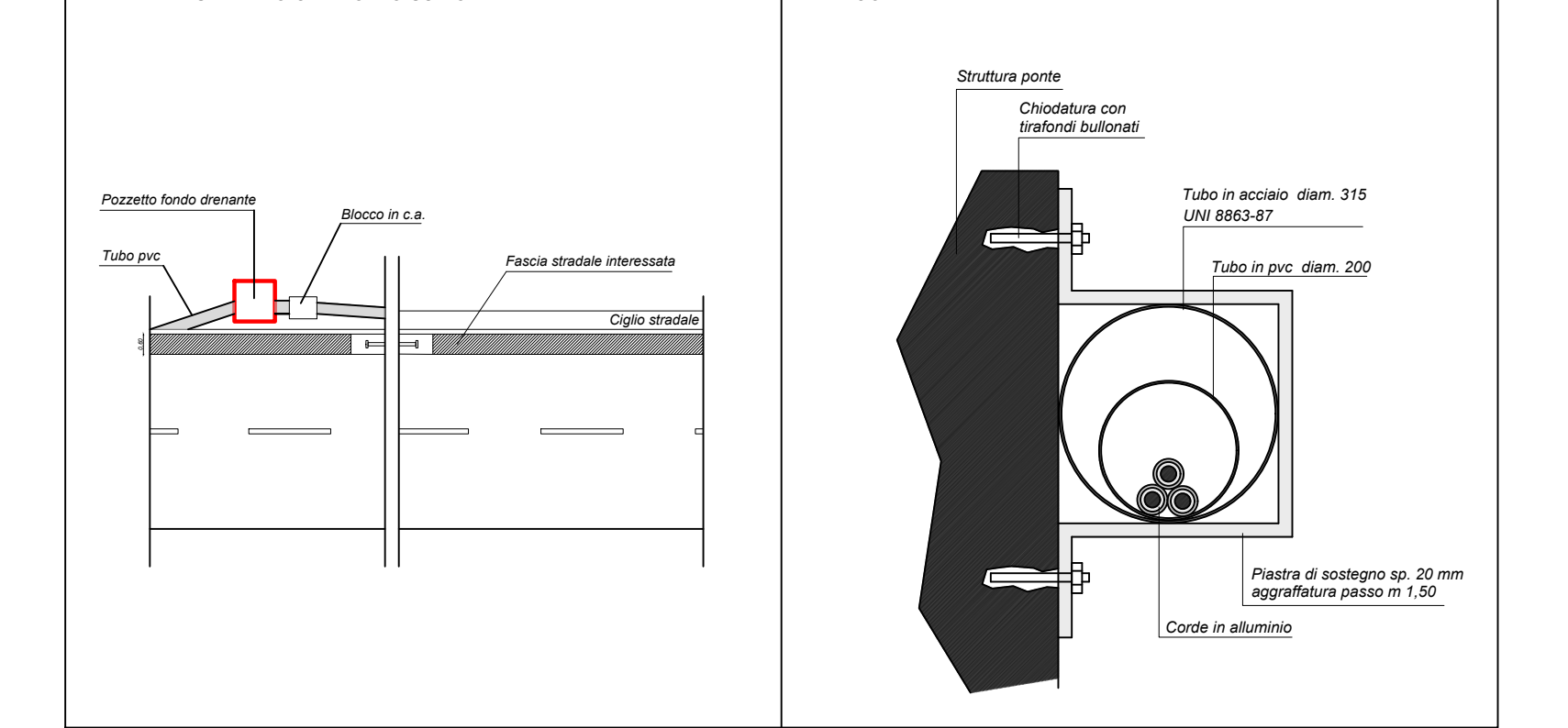
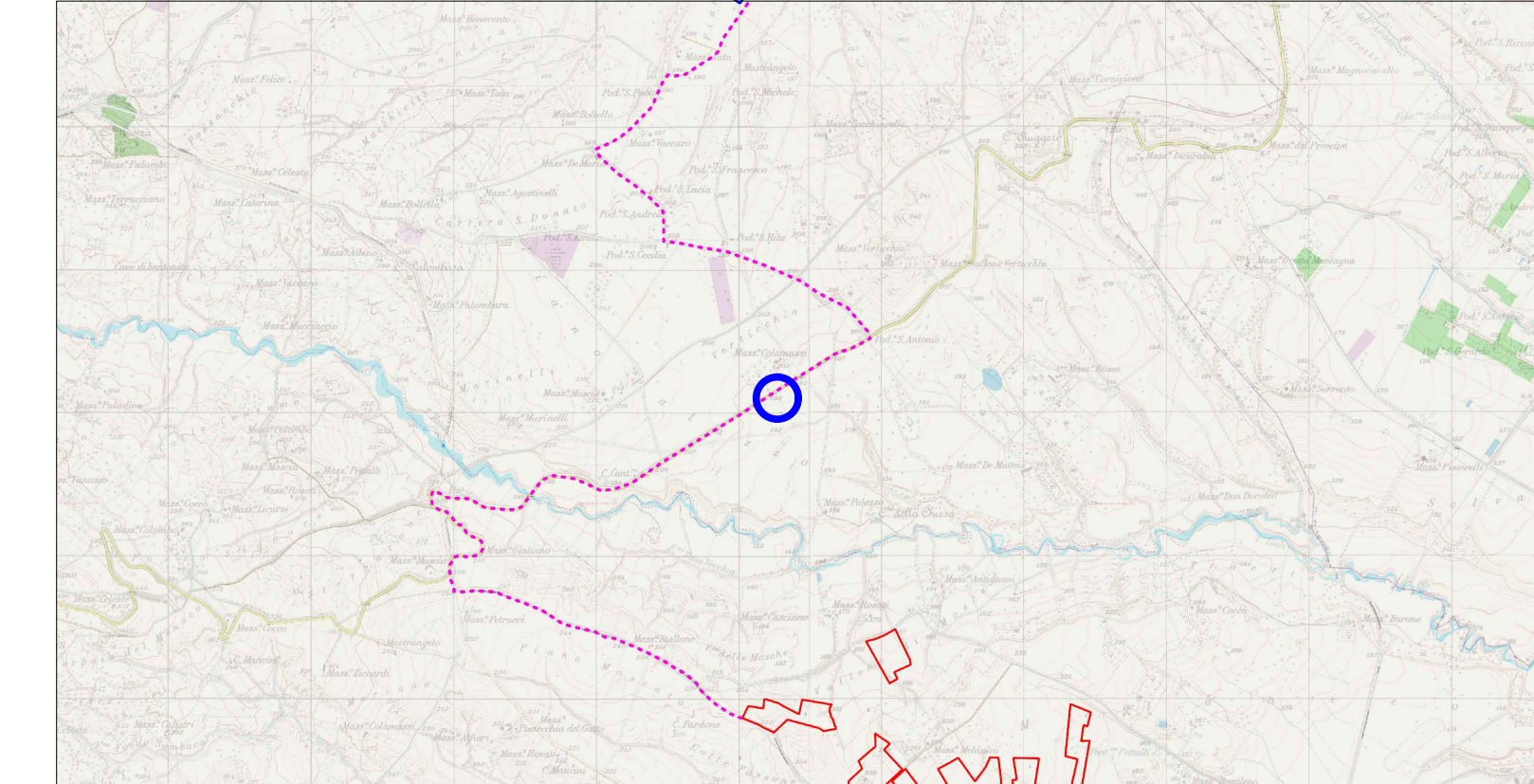


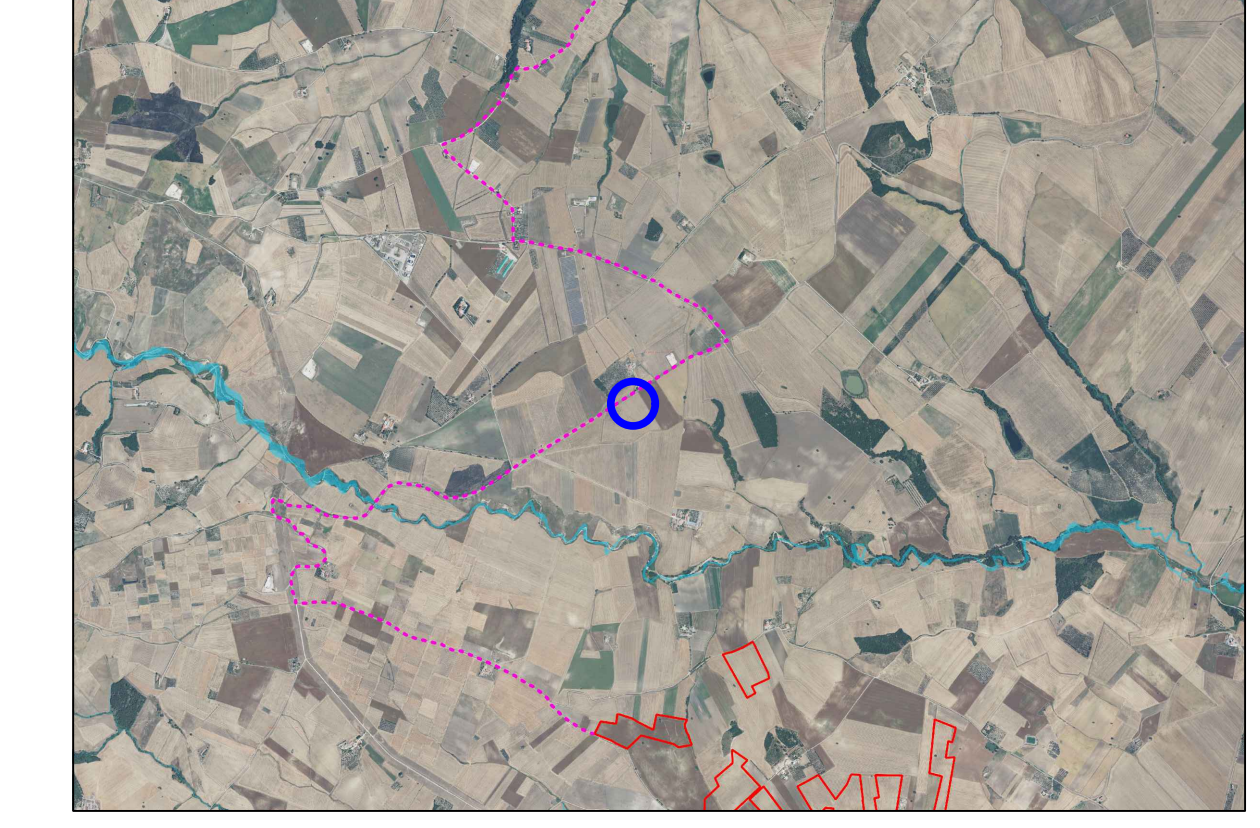
Foto - Interferenza 9



Inquadramento cartografico



Ortofoto



Pianta e sezione

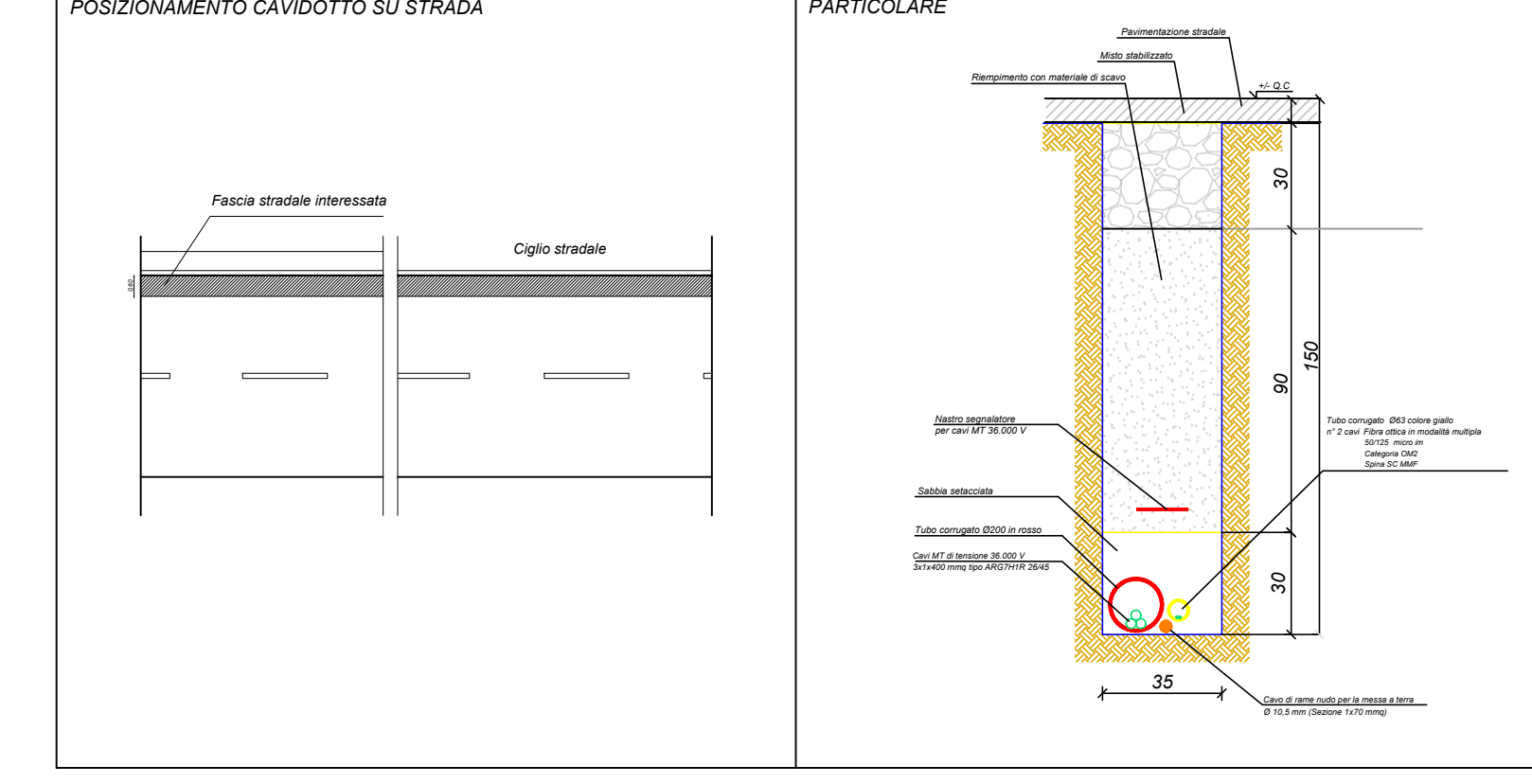
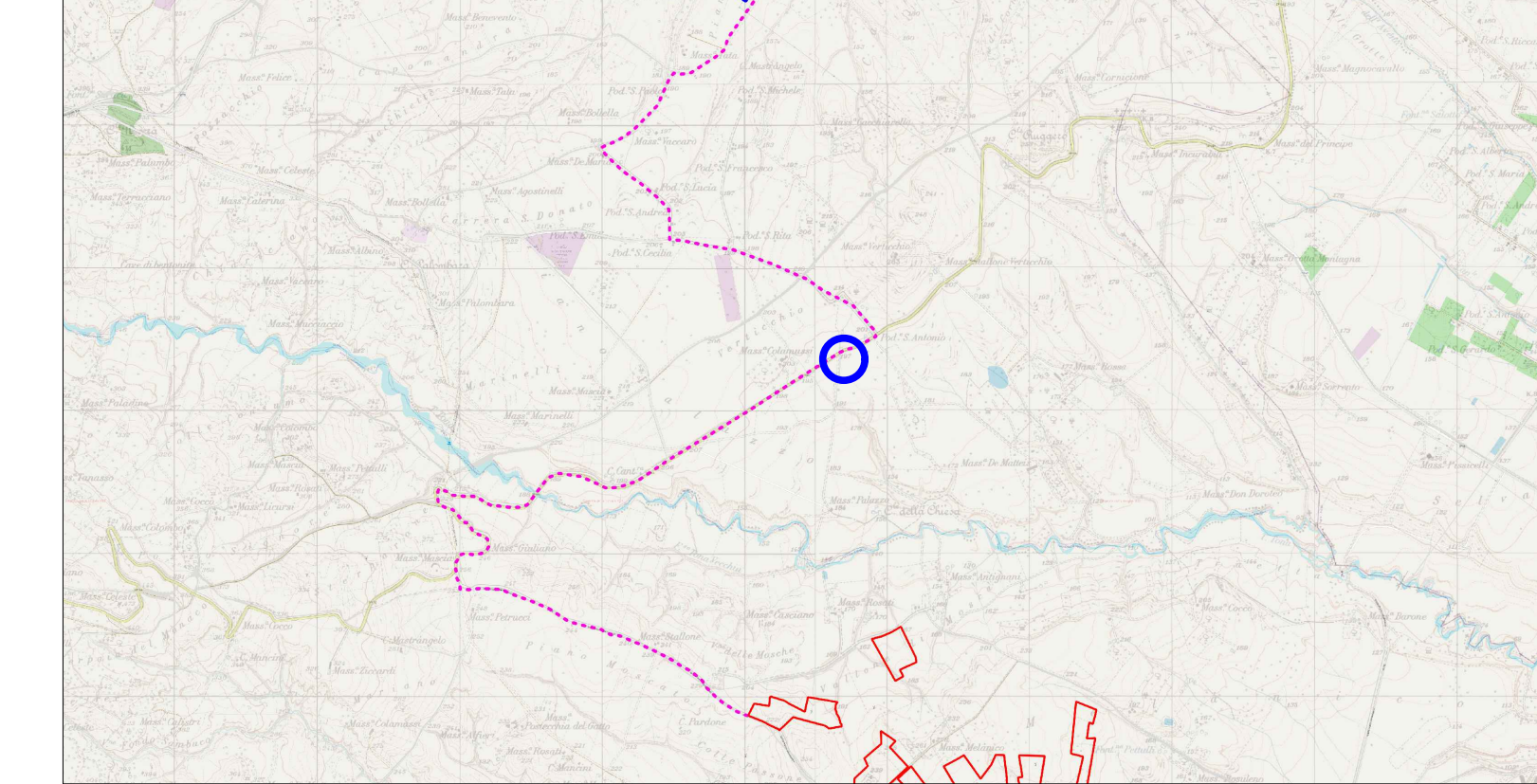


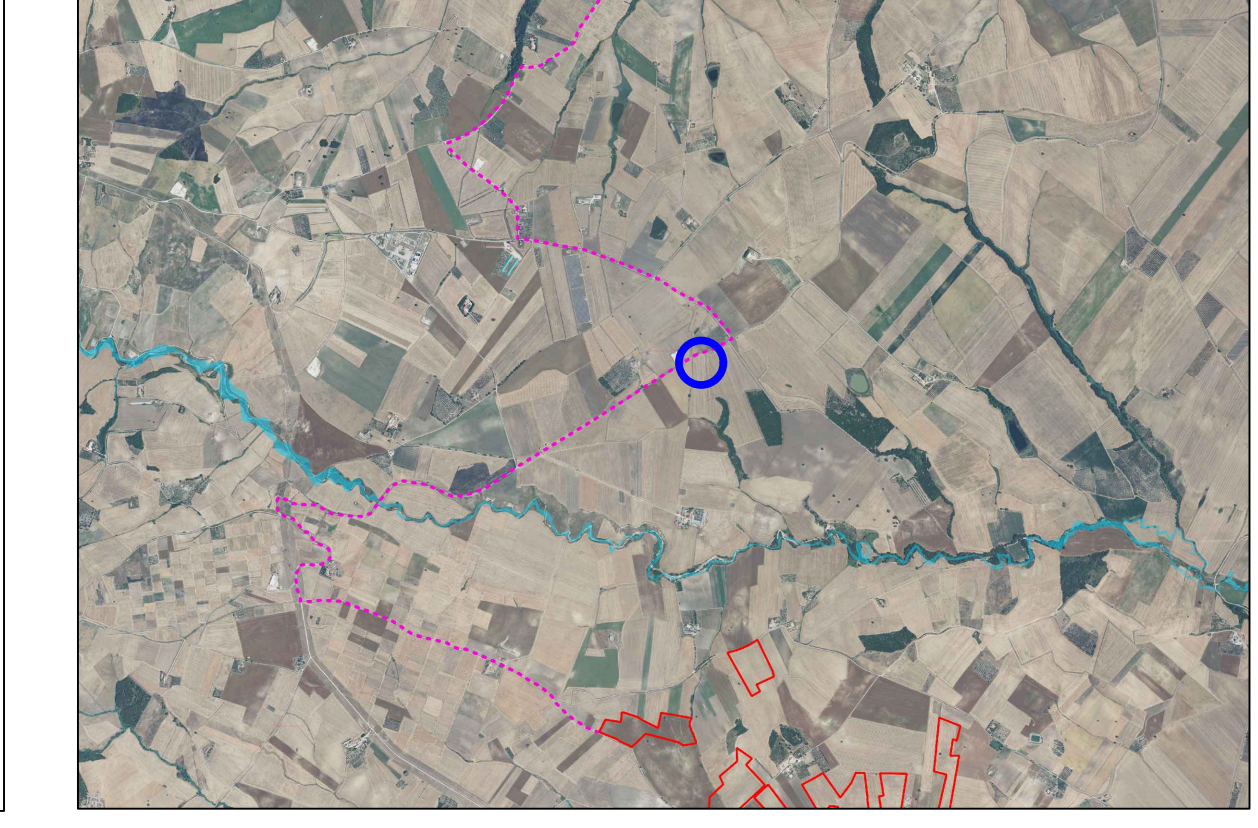
Foto - Interferenza 10



Inquadramento cartografico



Ortofoto



Pianta e sezione

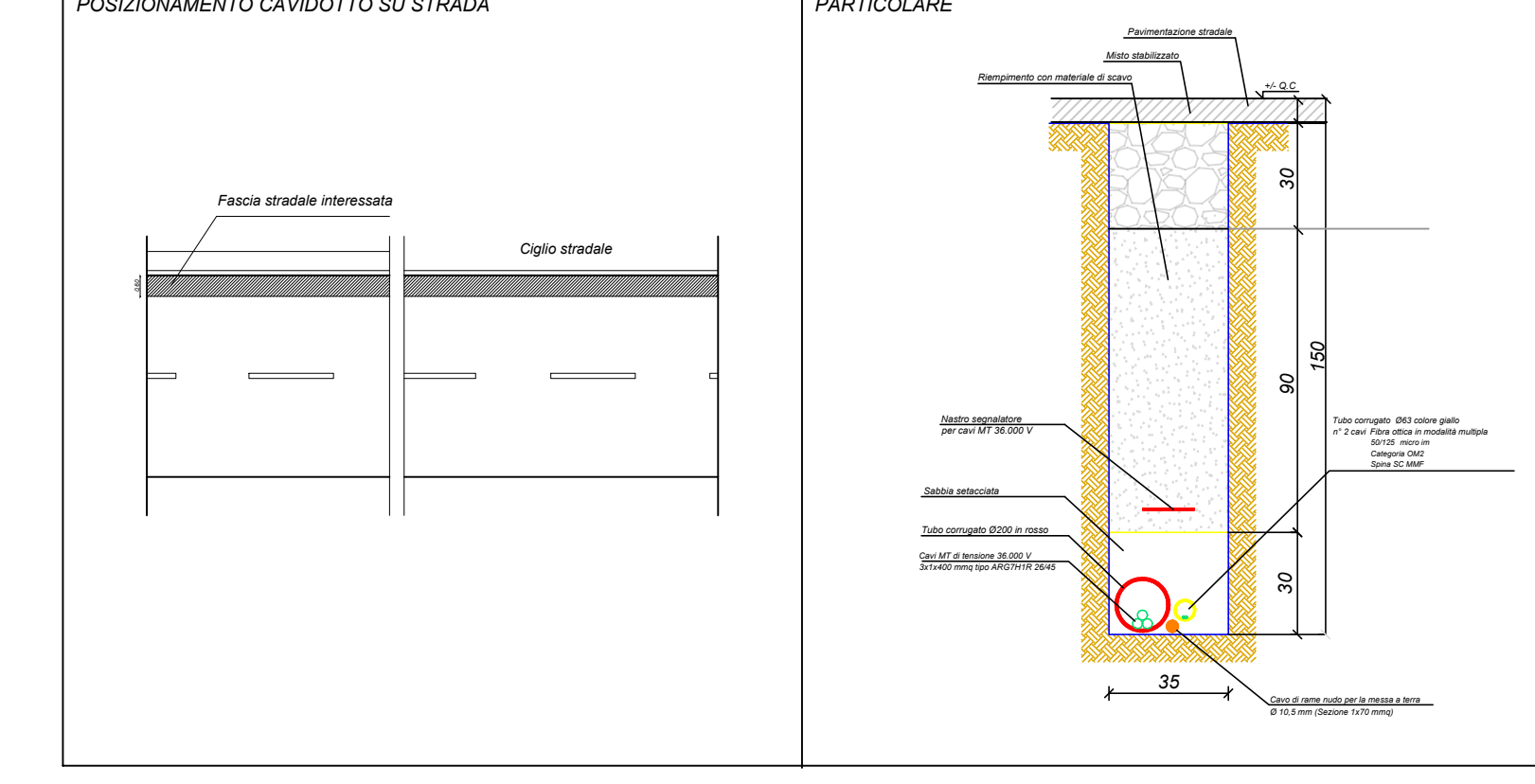
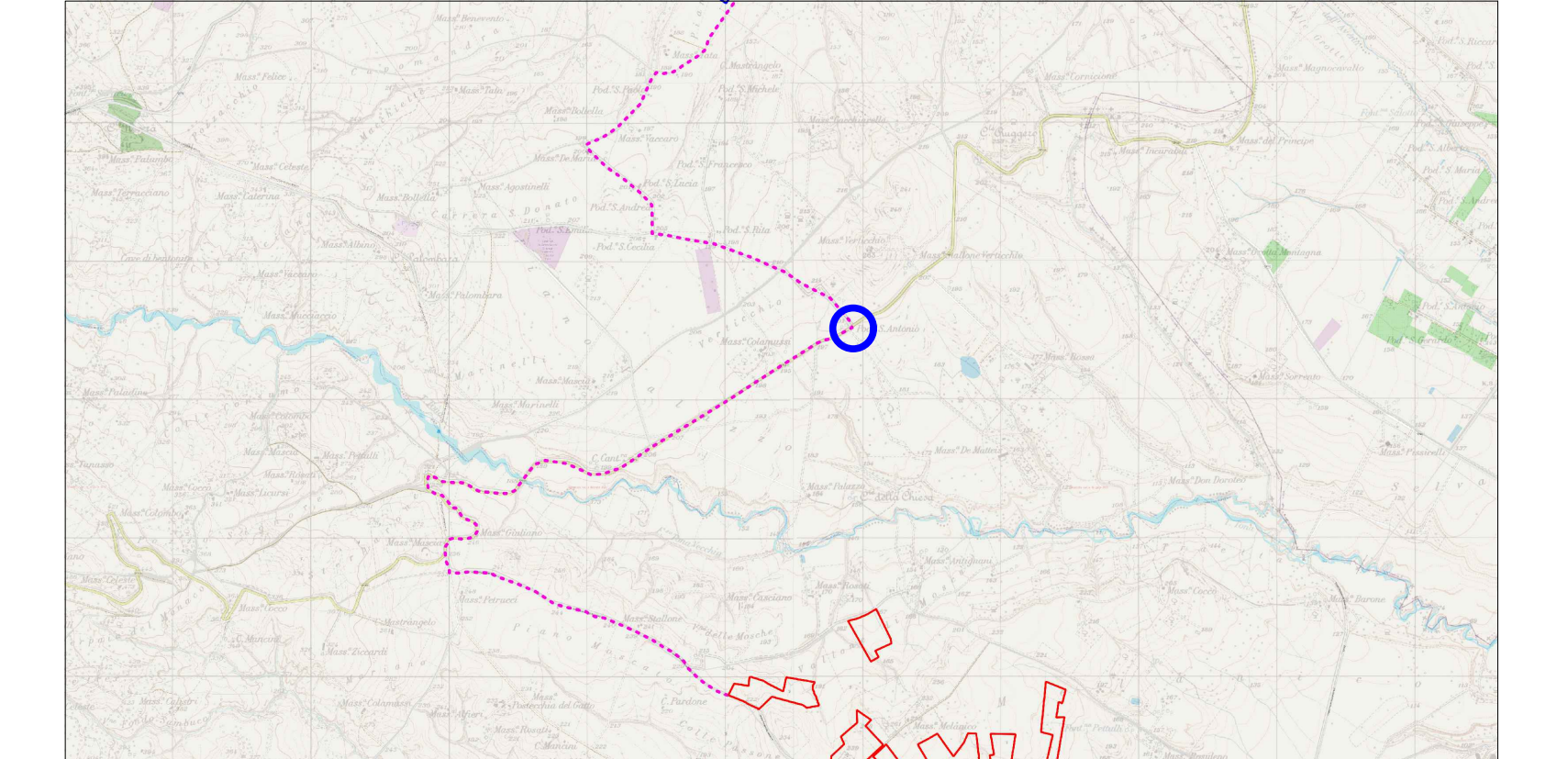


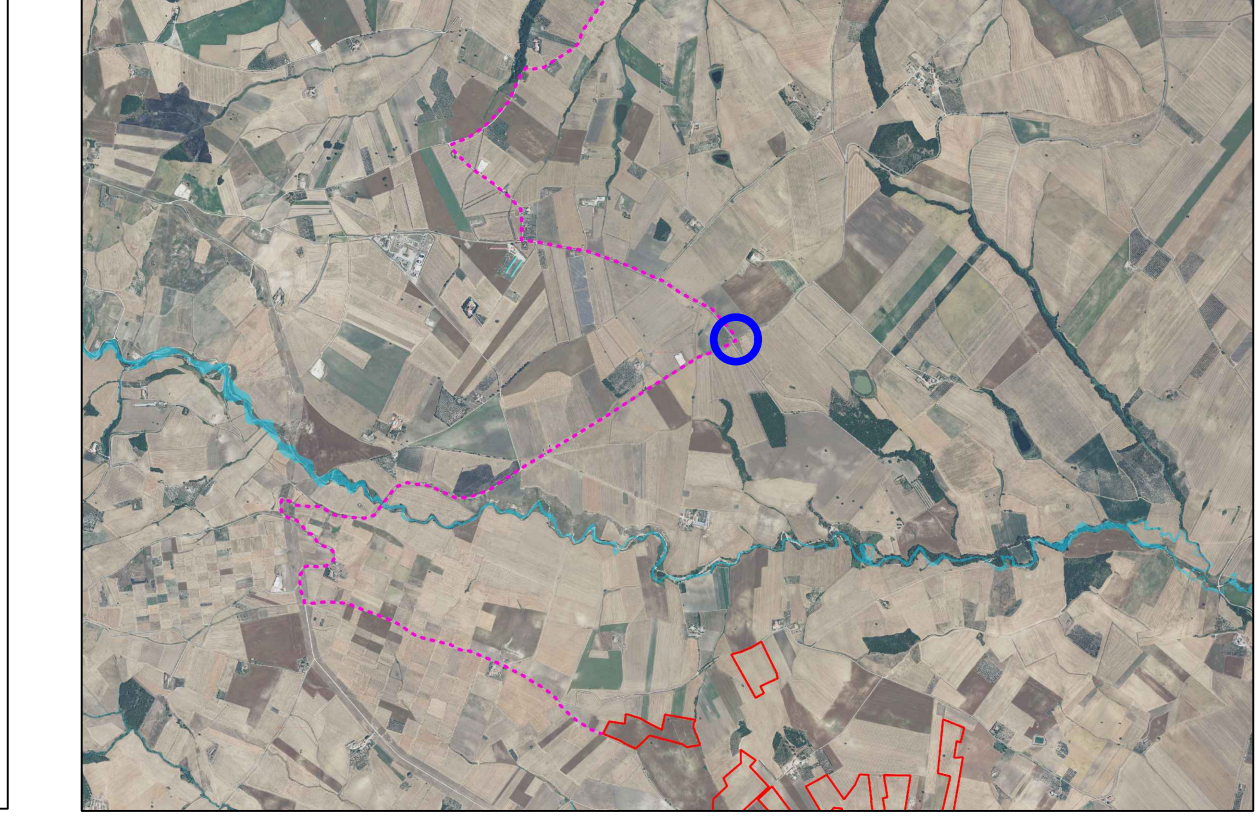
Foto - Interferenza 11



Inquadramento cartografico



Ortofoto



Pianta e sezione

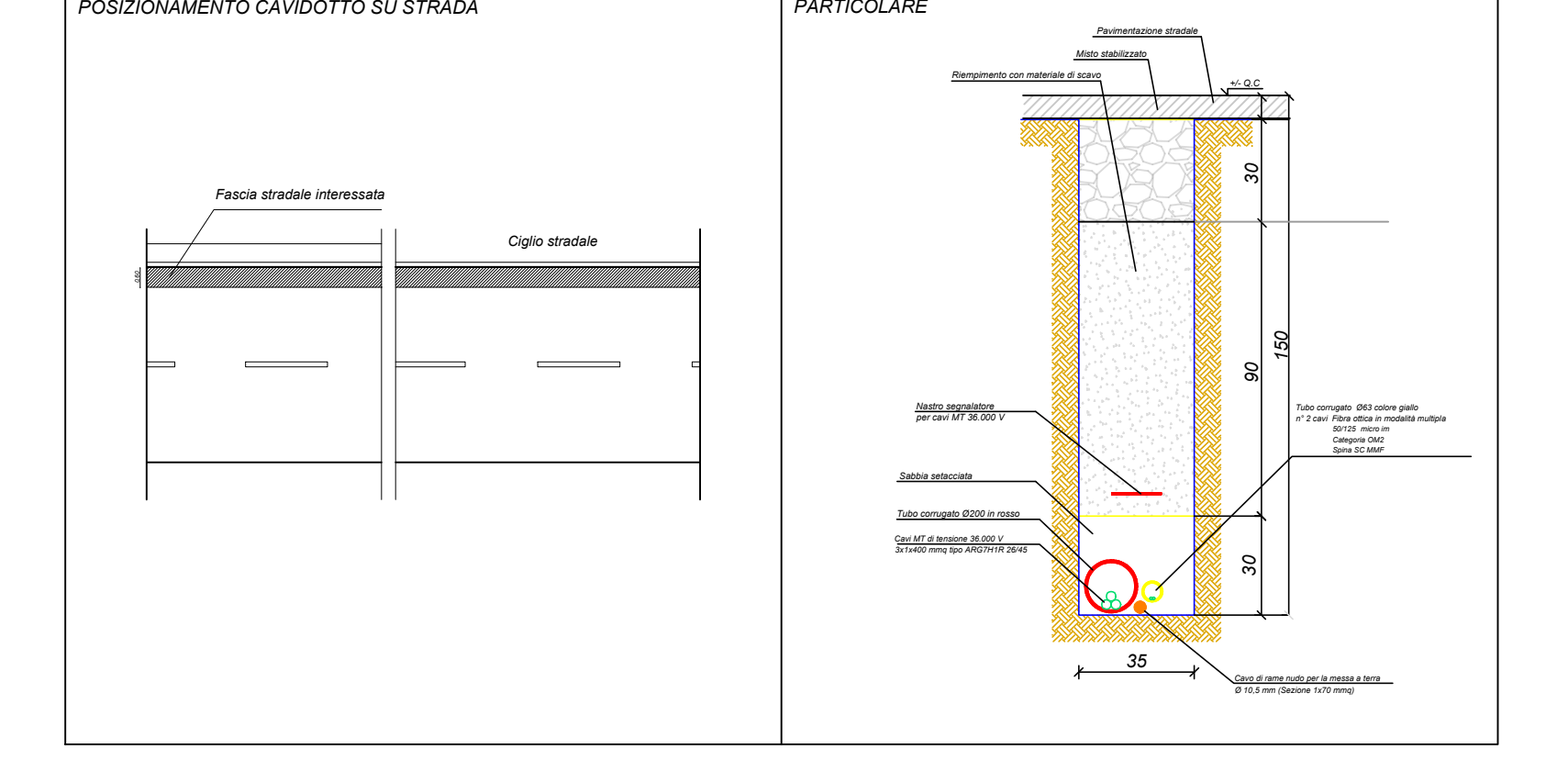
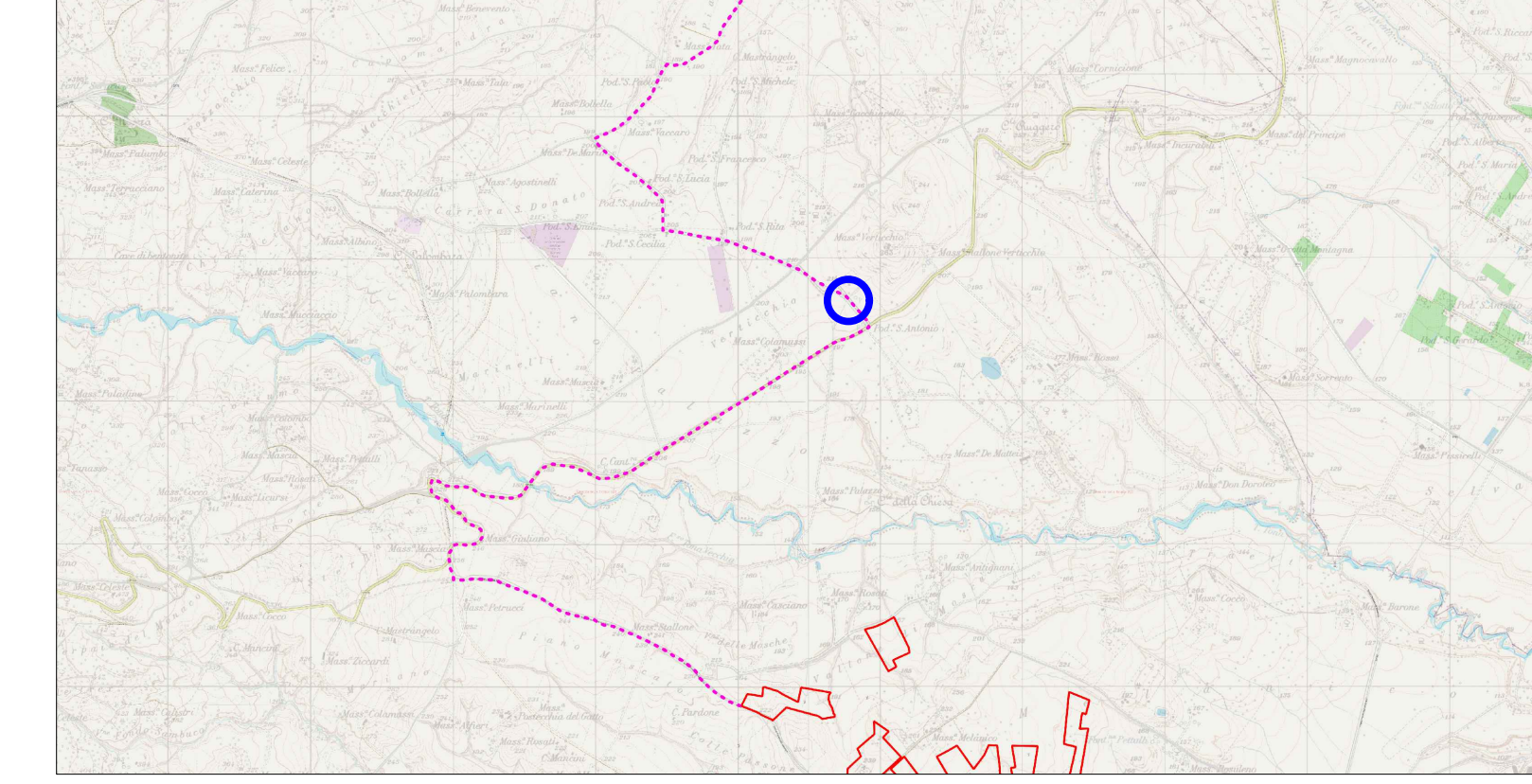


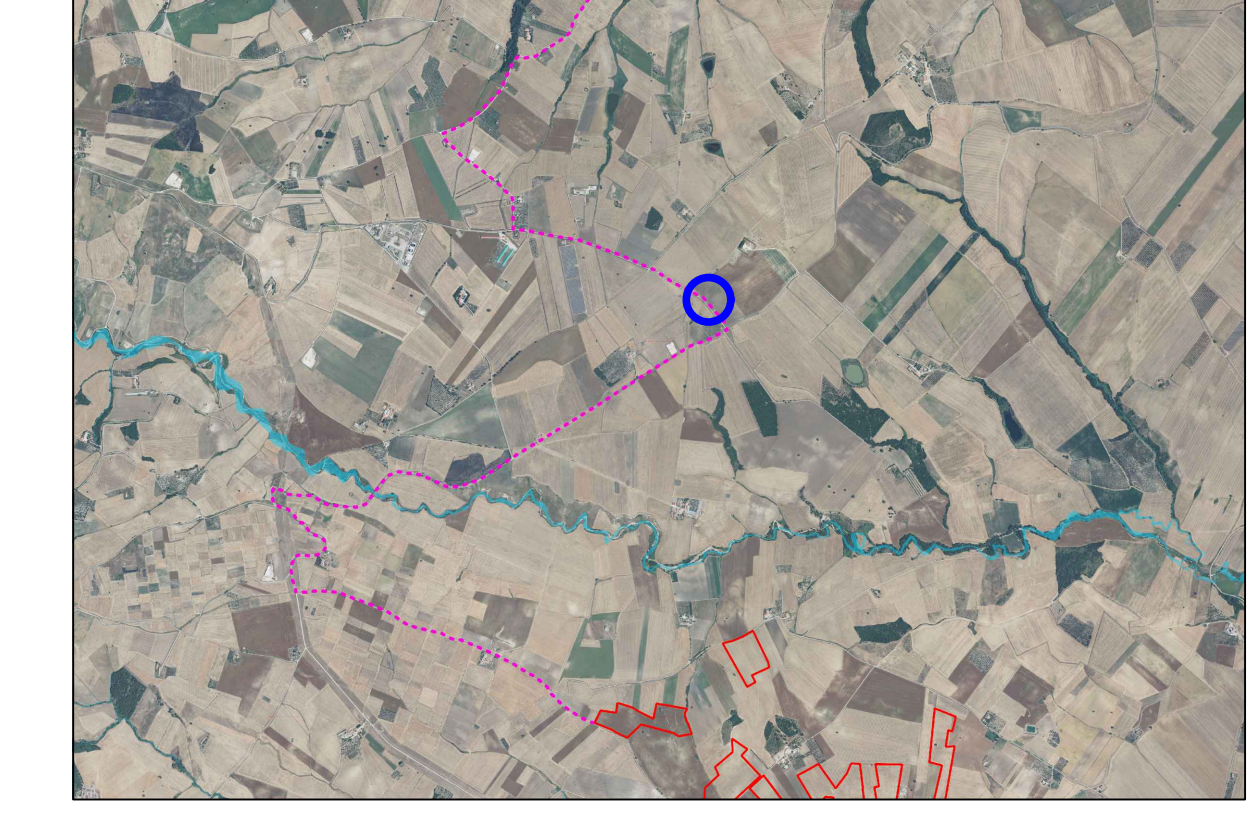
Foto - Interferenza 12



Inquadramento cartografico



Ortofoto



Pianta e sezione

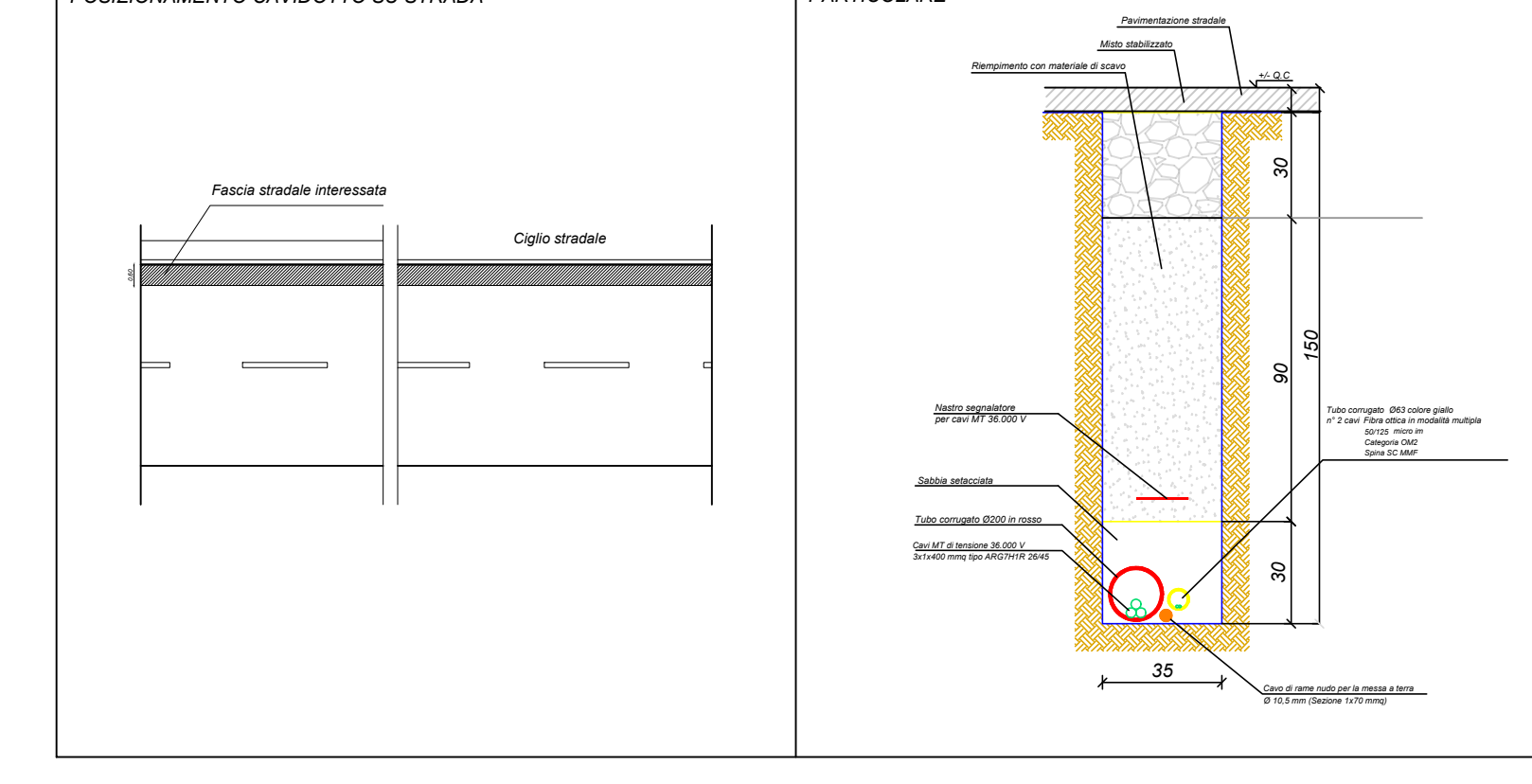
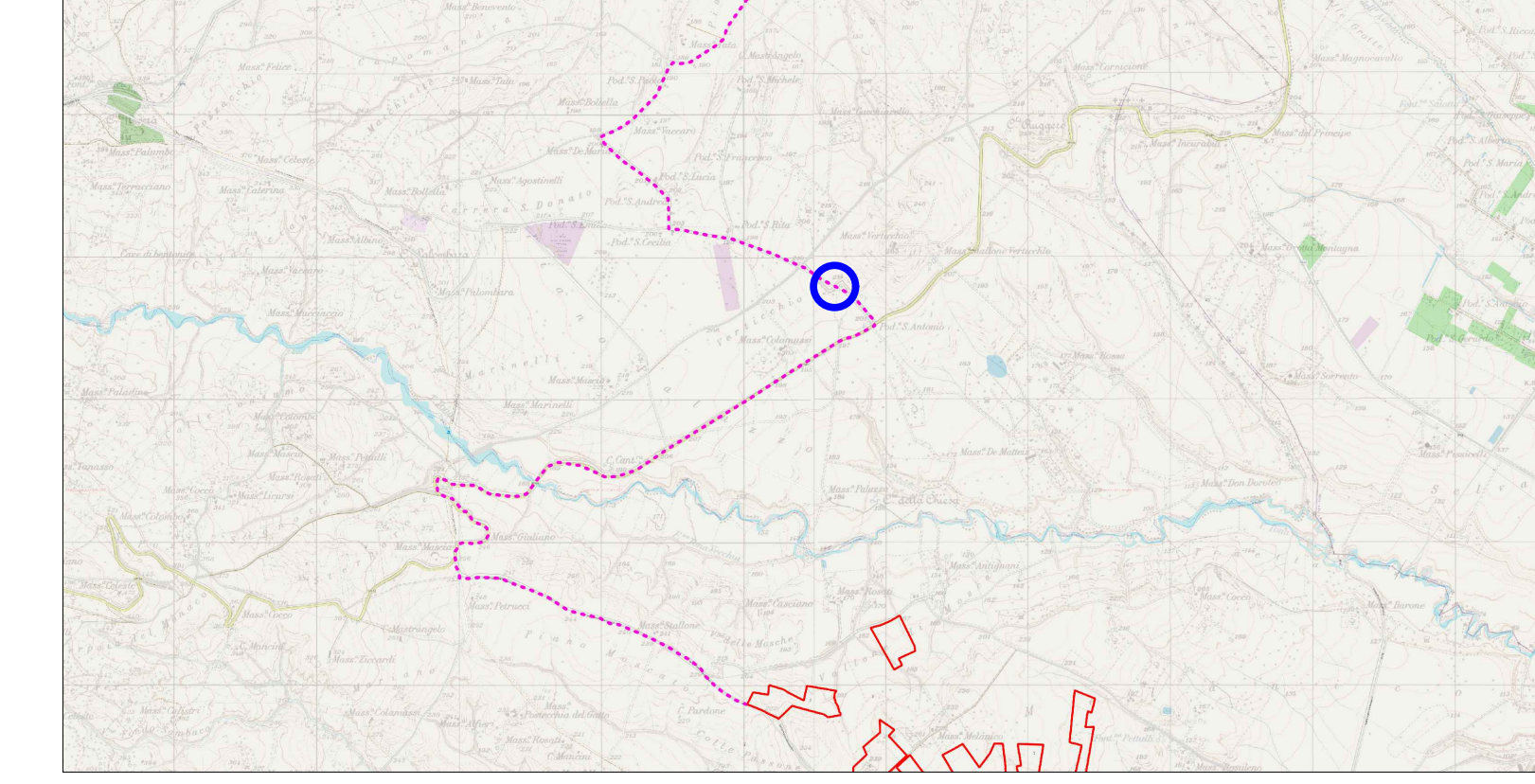


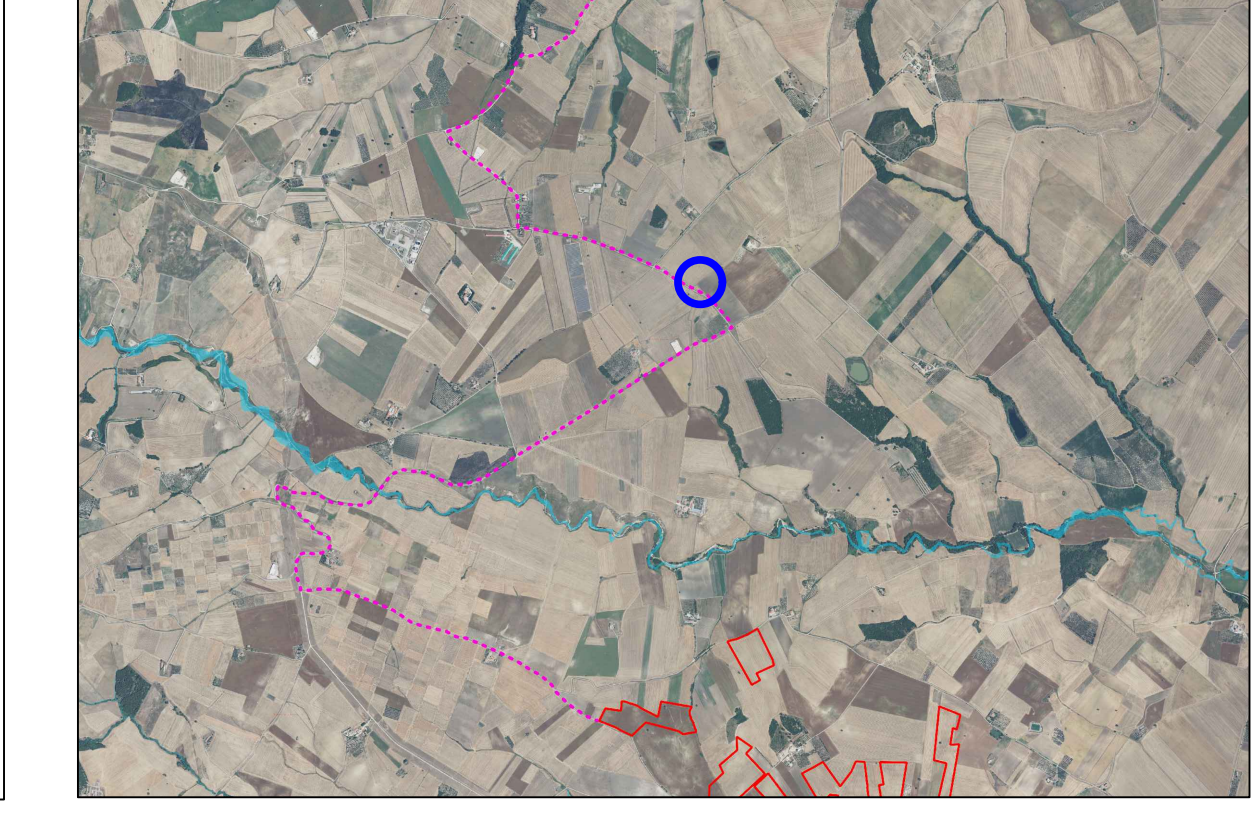
Foto - Interferenza 13



Inquadramento cartografico



Ortofoto



Pianta e sezione

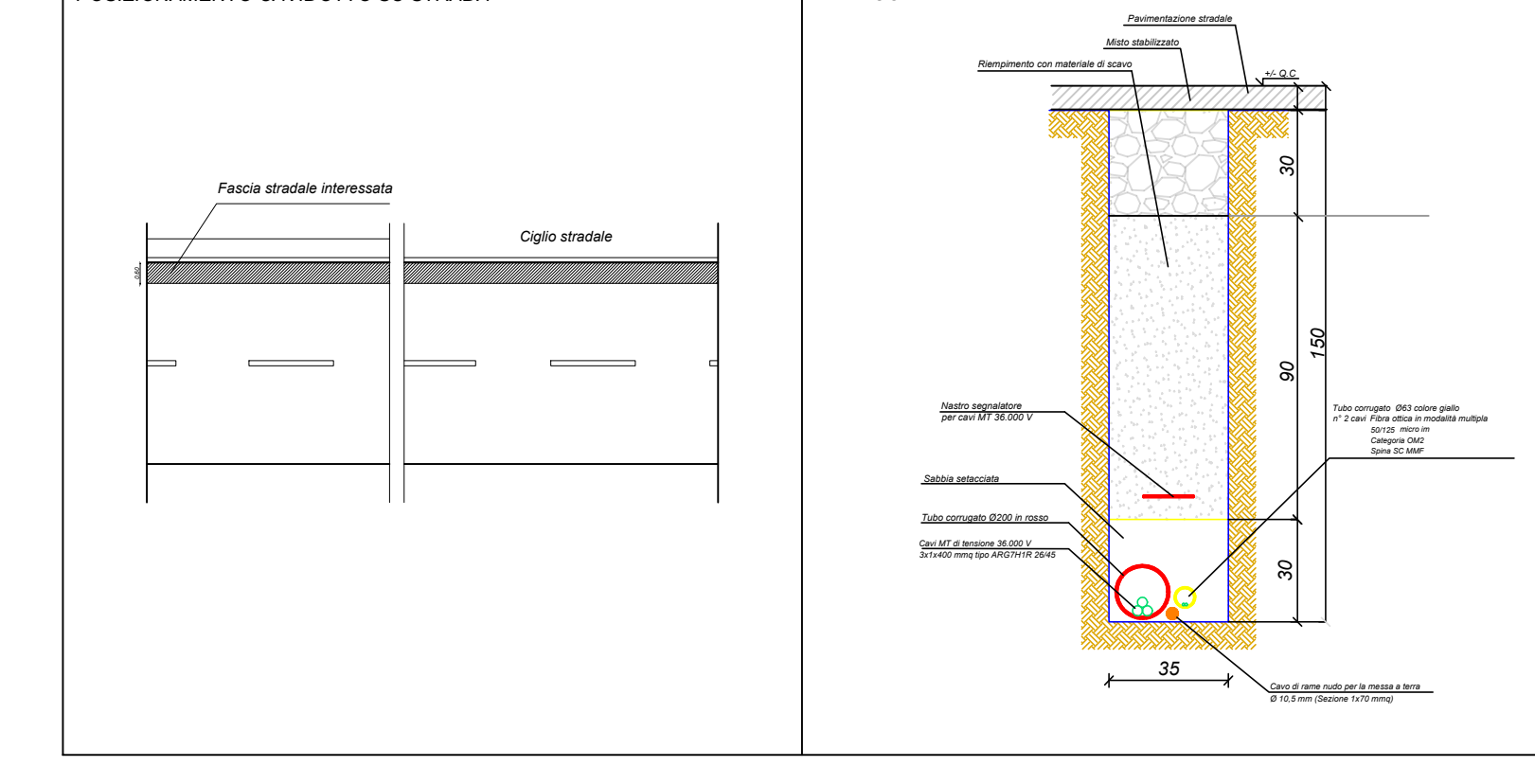
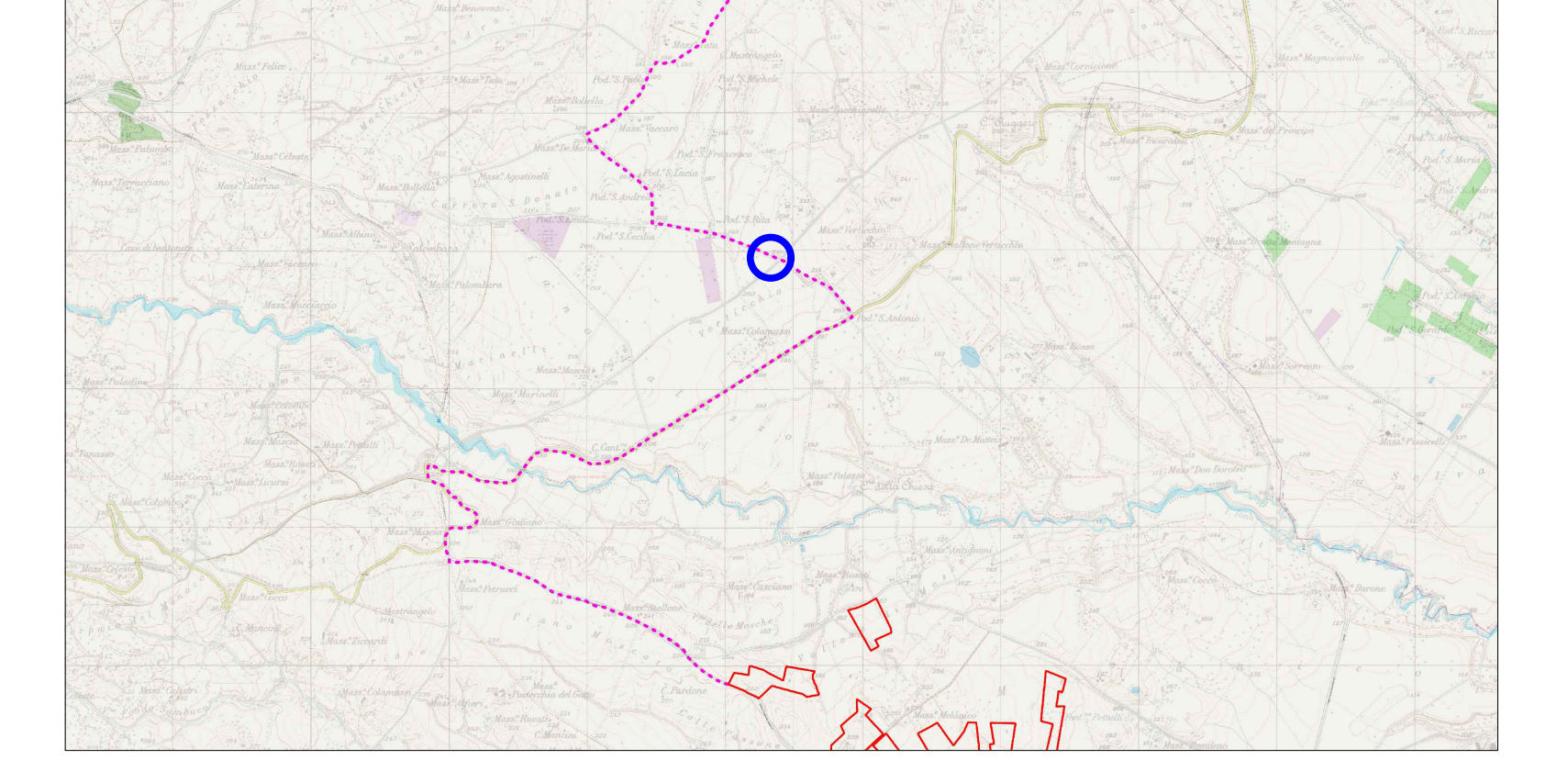


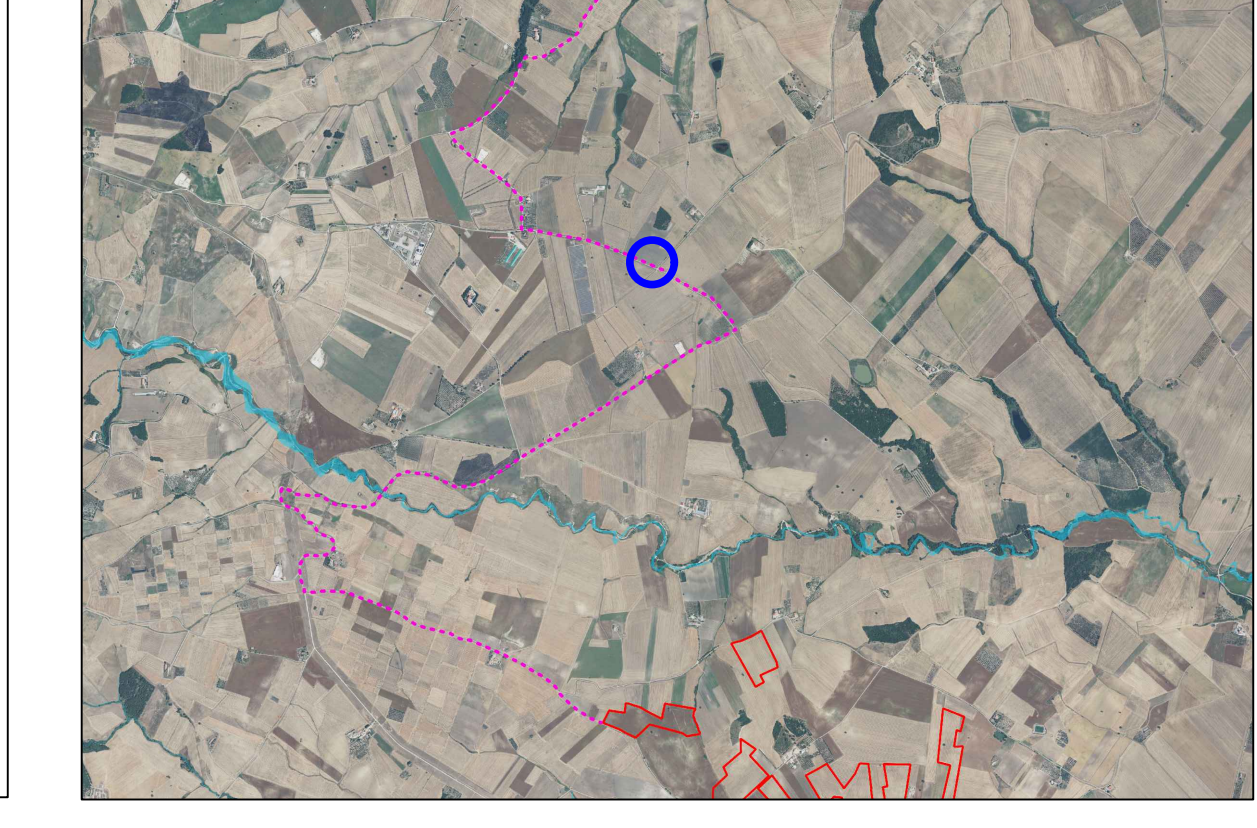
Foto - Interferenza 14



Inquadramento cartografico



Ortofoto



Pianta e sezione

