

**REGIONE MOLISE**  
**COMUNE DI S.CROCE di MAGLIANO**  
 Provincia di Campobasso

**REALIZZAZIONE E GESTIONE DI UN IMPIANTO FOTOVOLTAICO DELLA POTENZA NOMINALE DI 46.00 MW CON RELATIVE OPERE DI CONNESSIONE ALLA RETE ELETTRICA NAZIONALE**

PROGETTISTA: **Expans** - Salerno - Direttore Tecnico: ing. Teodoro Bottegari - 1974

PROponente: **soc. ARAN 2 srl**  
 via Fratelli Ruspoli 8 00198 Roma

Studio Tecnico: **POWER PROJECT** - geom. Benedetto Cuioppo

OGGETTO: **PROGETTO DEFINITIVO**  
**CARTA DELLE INTERFERENZE**

elaborato: **F\_4.1.C**

data: Maggio 2023

Varie: AD

*Individuazione delle interferenze lungo il percorso del cavidotto di connessione*

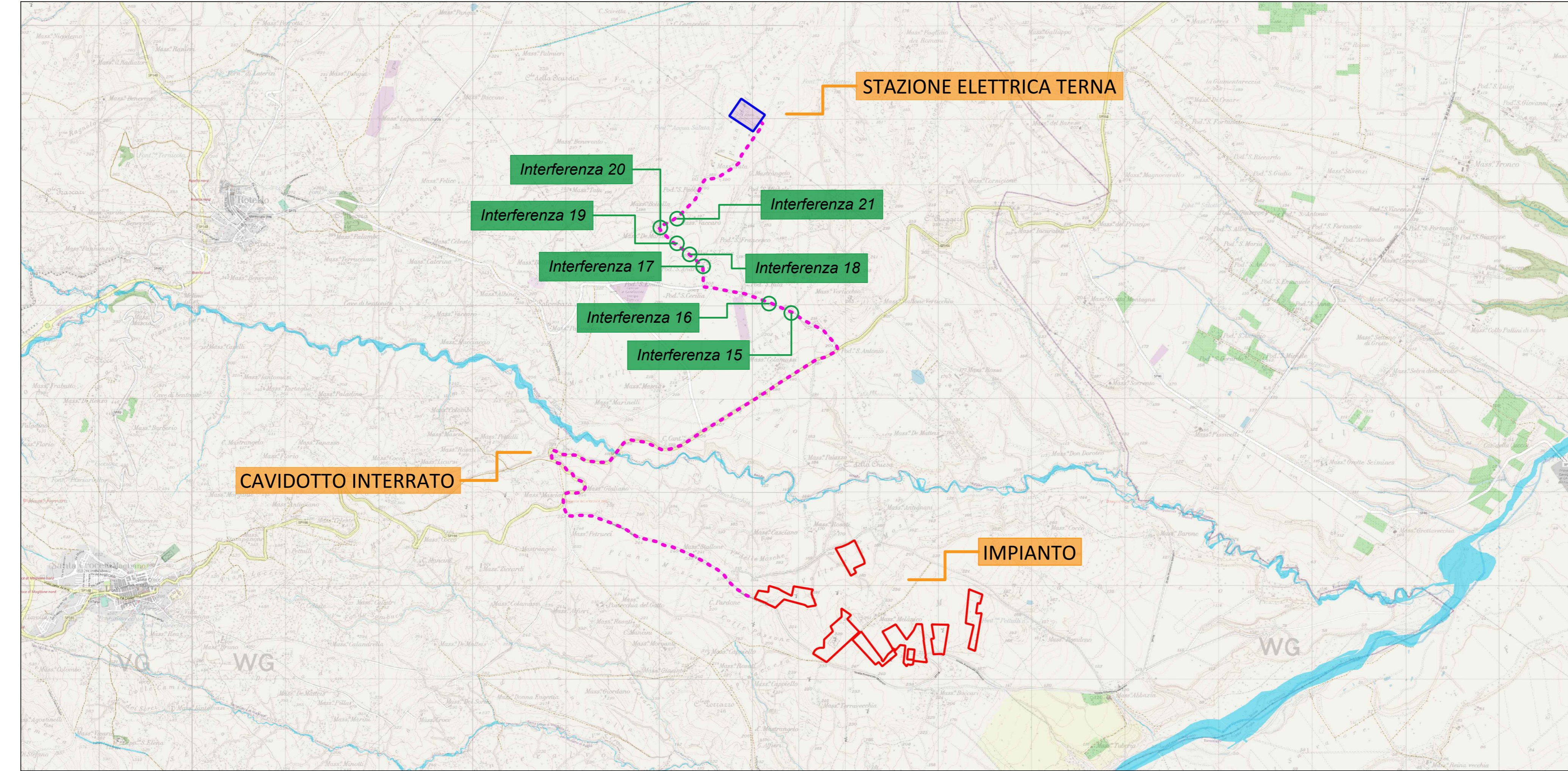
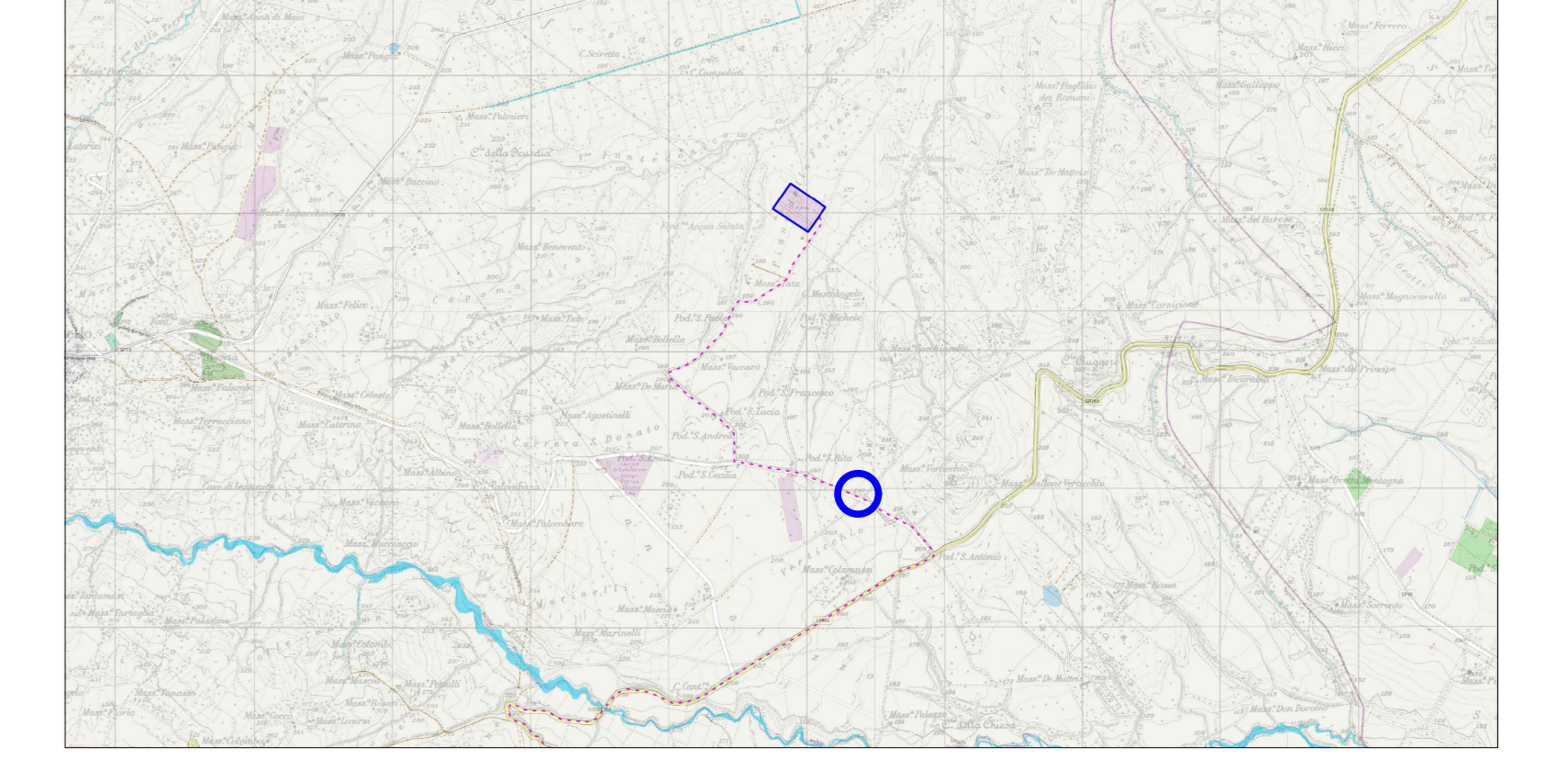


Foto - Interferenza 15



Inquadramento cartografico



Ortofoto



Pianta e sezione

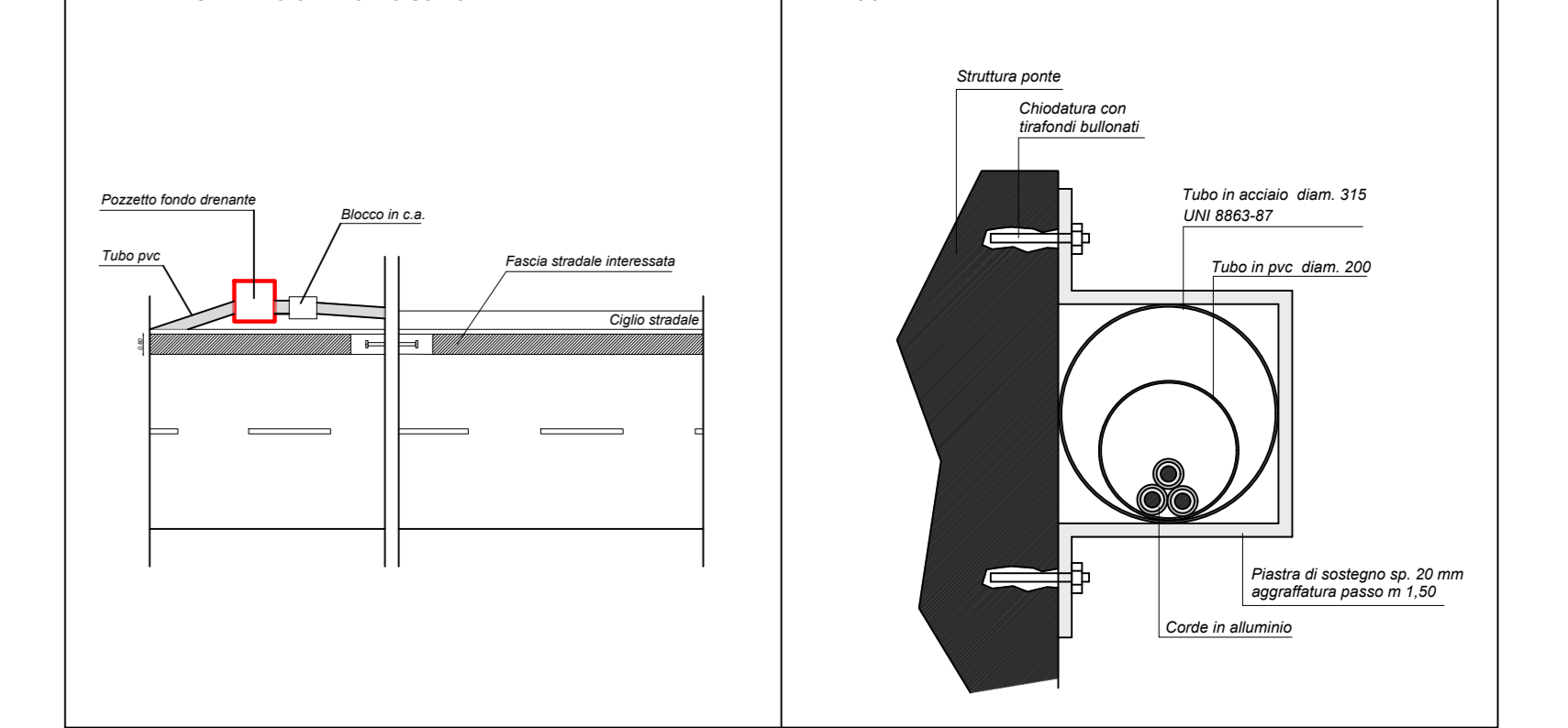
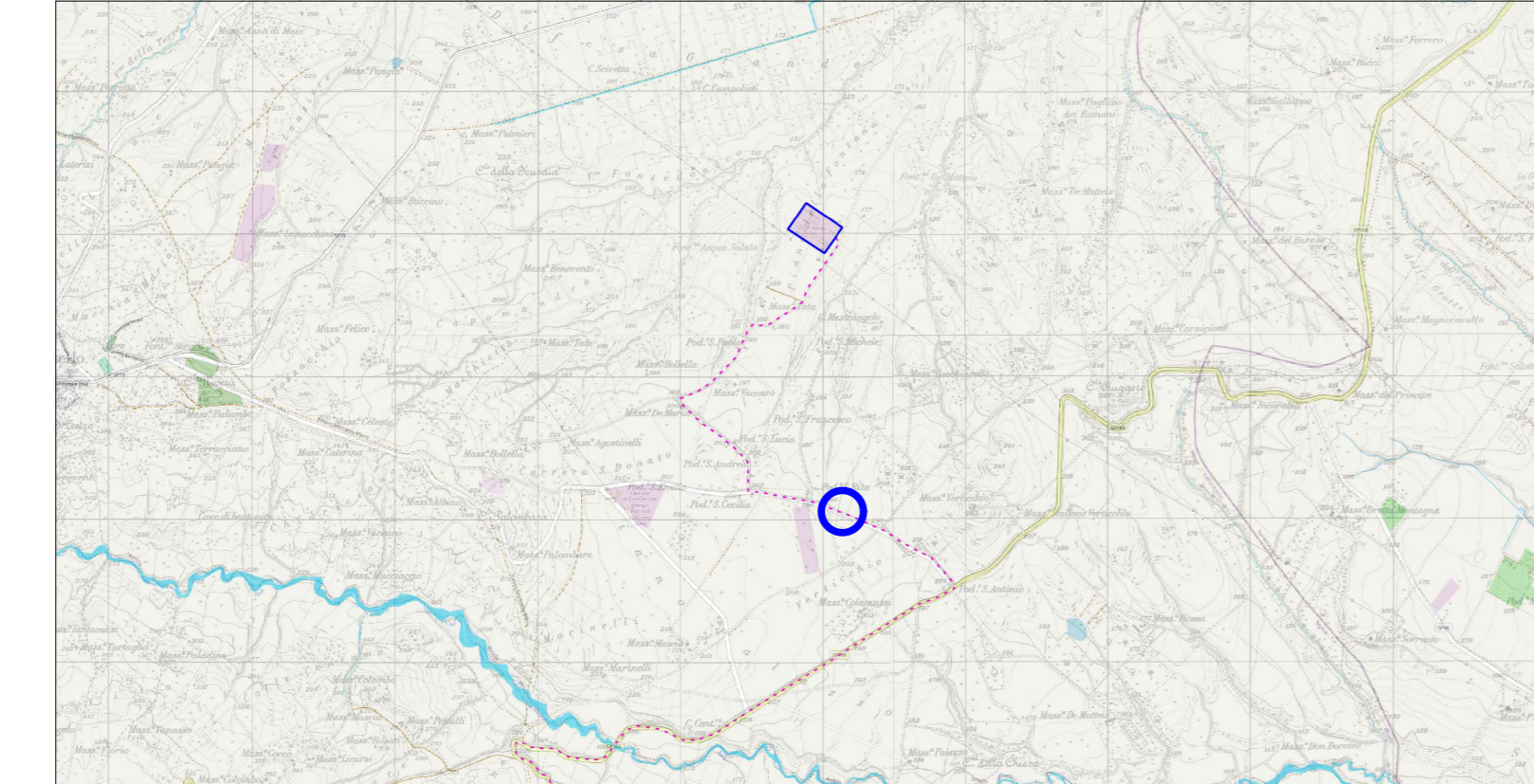


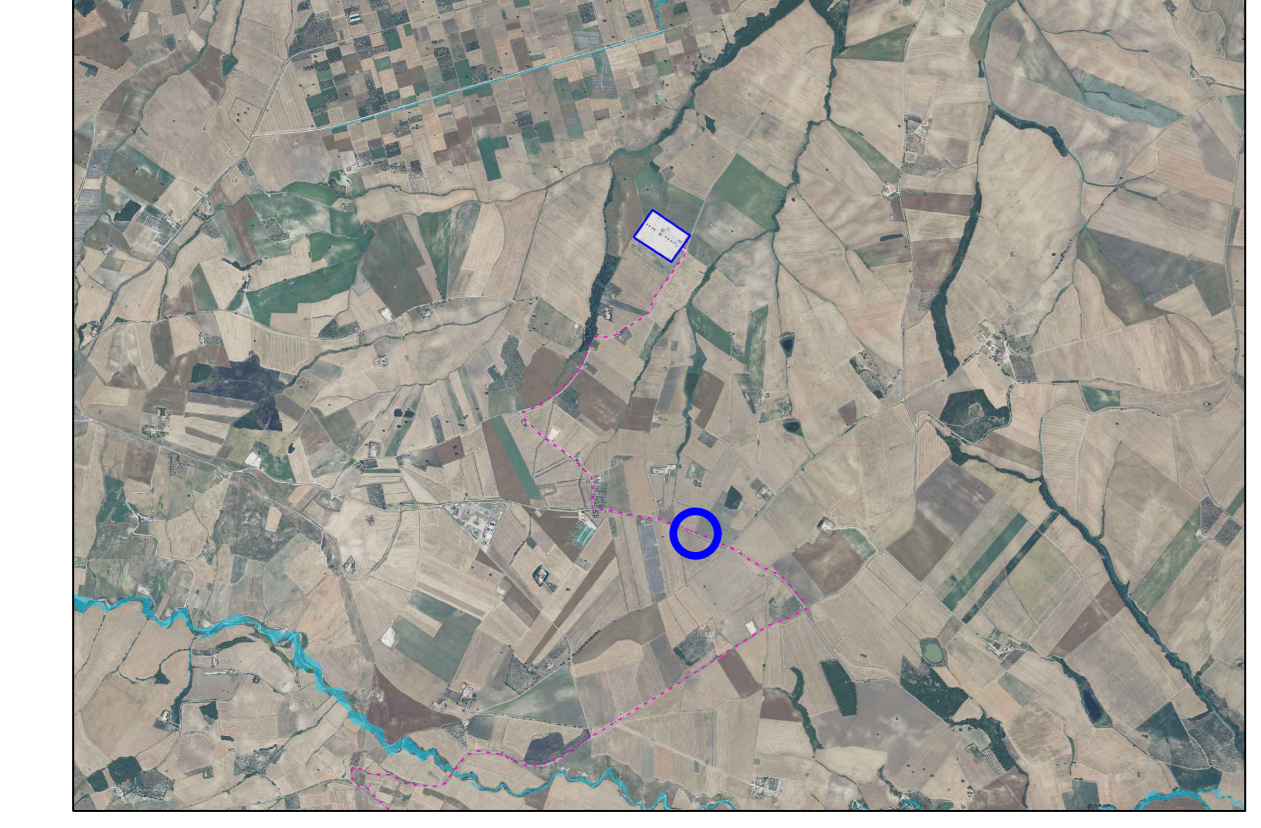
Foto - Interferenza 16



Inquadramento cartografico



Ortofoto



Pianta e sezione

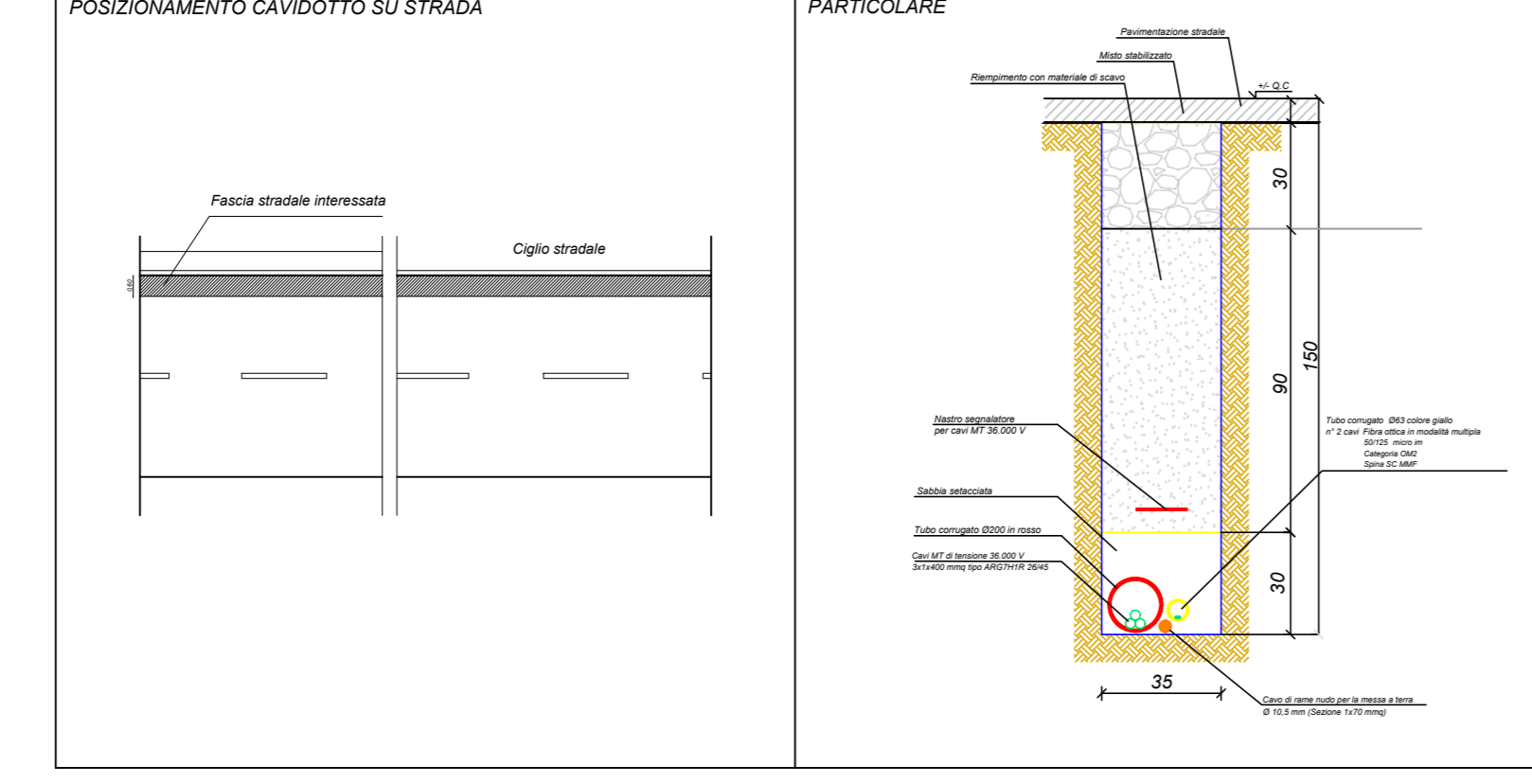
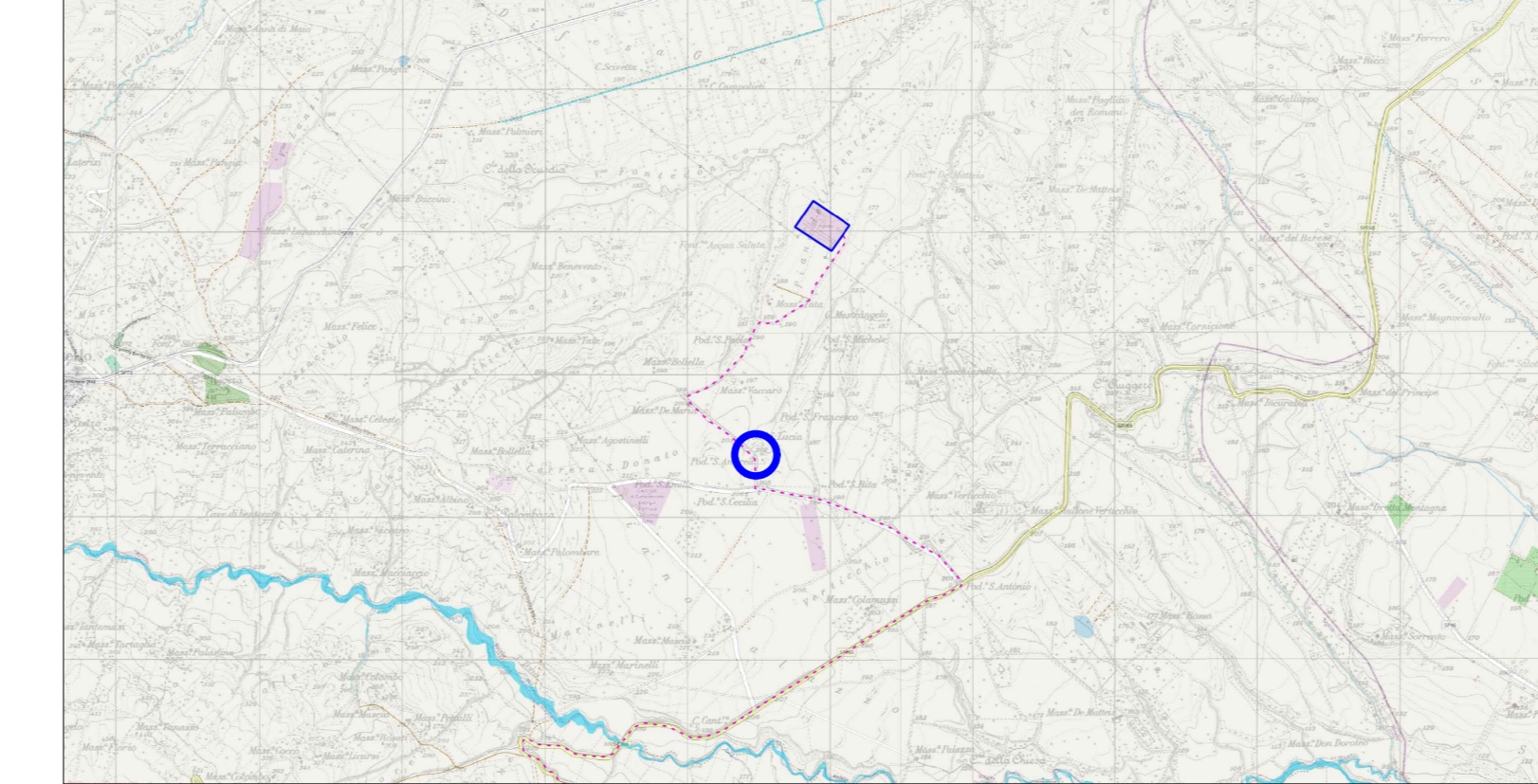


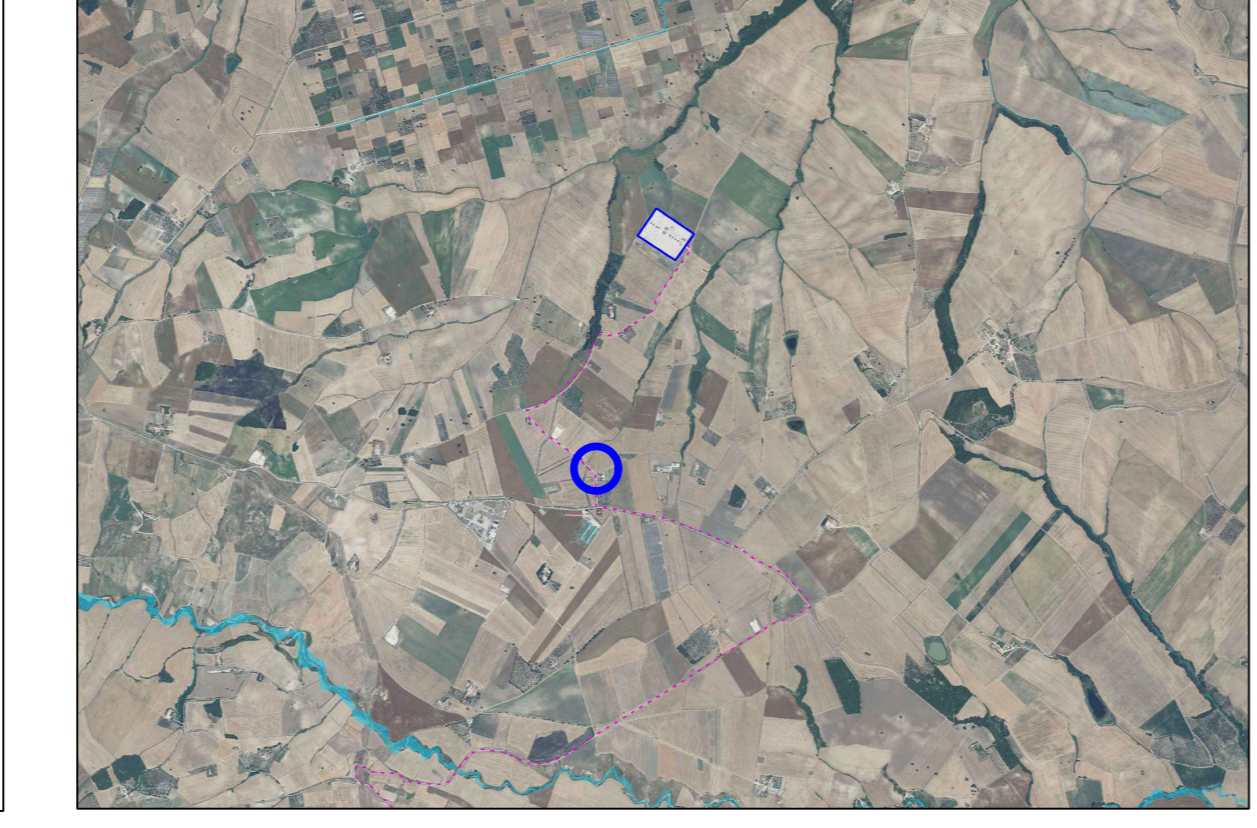
Foto - Interferenza 17



Inquadramento cartografico



Ortofoto



Pianta e sezione

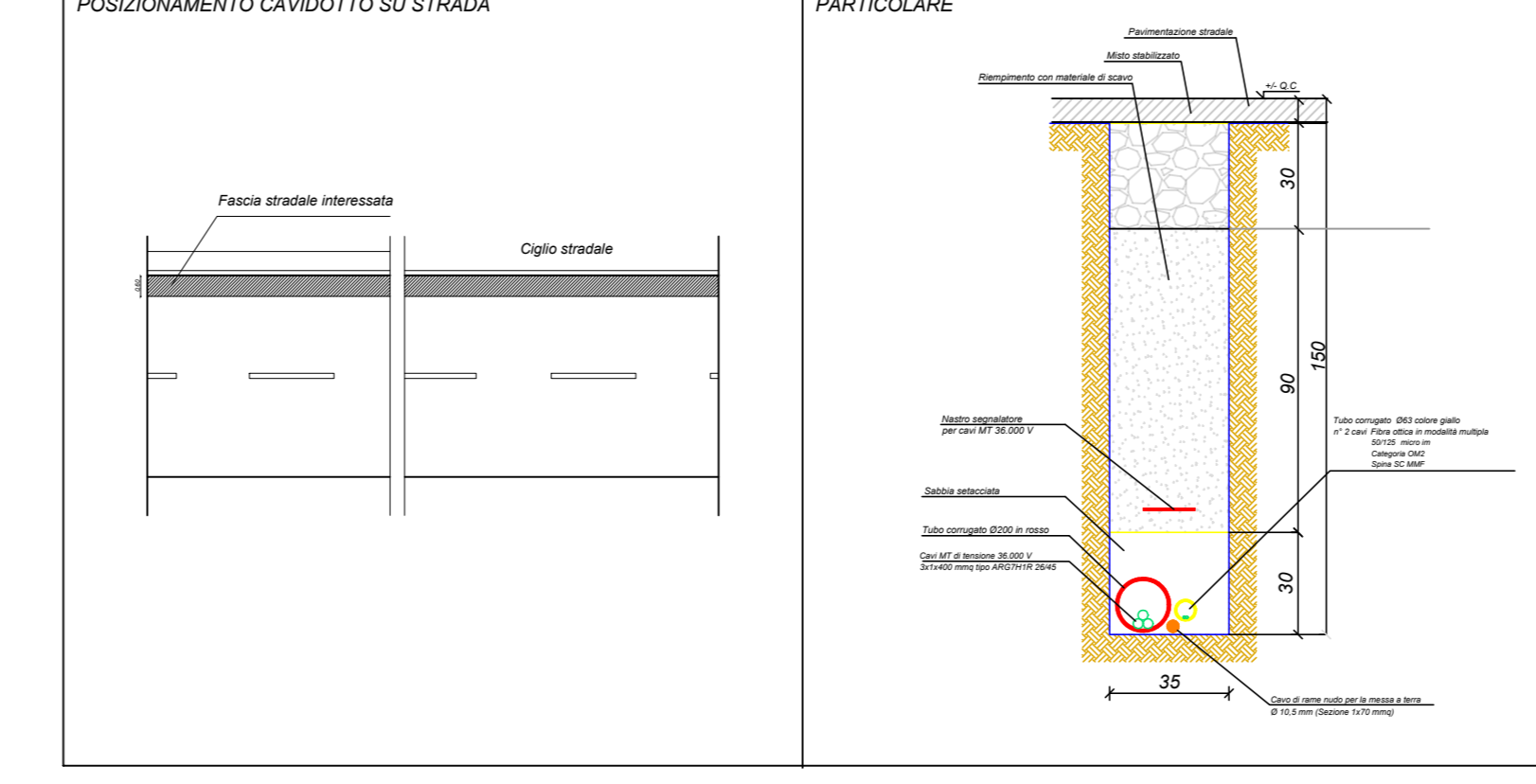
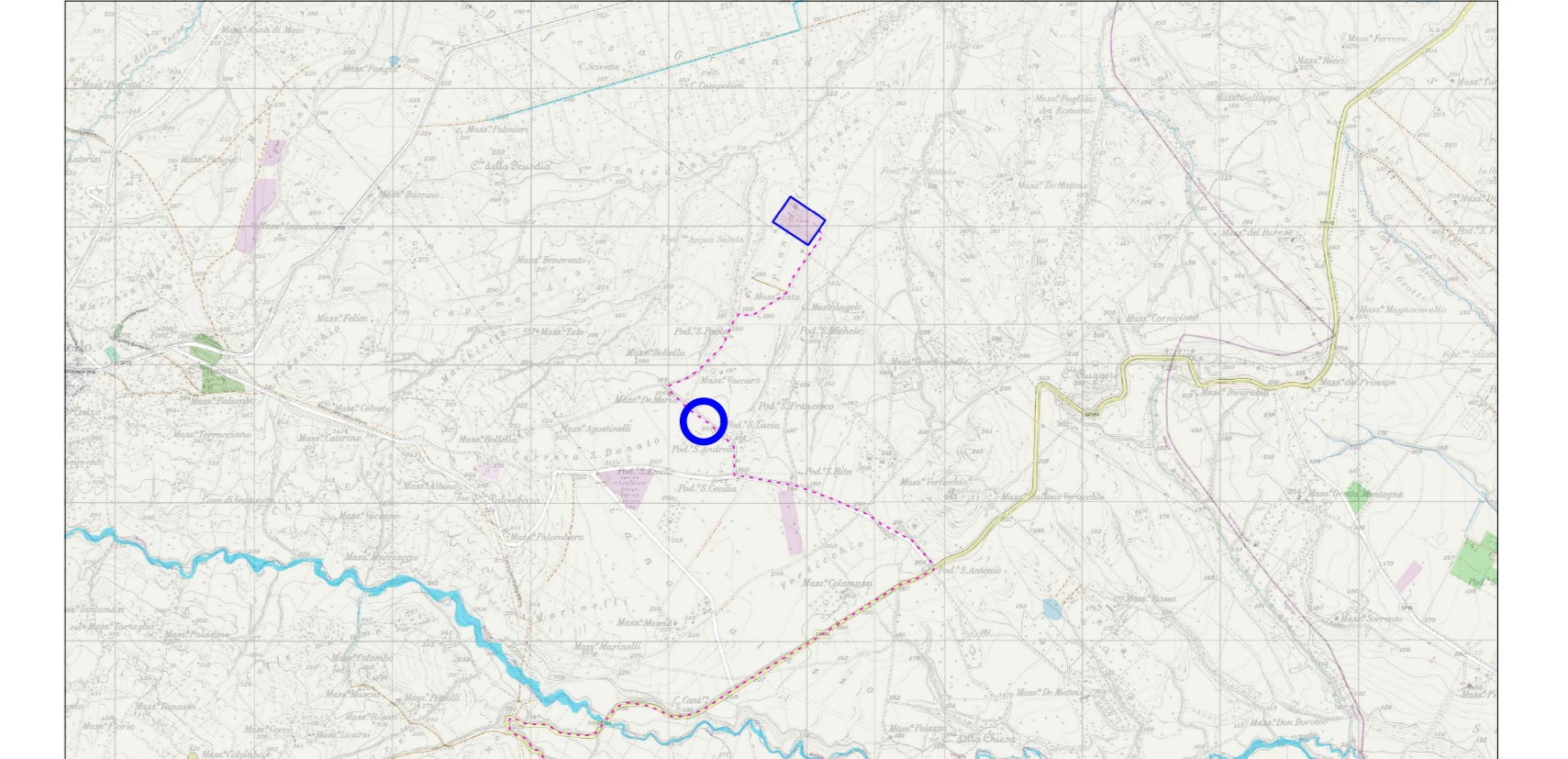


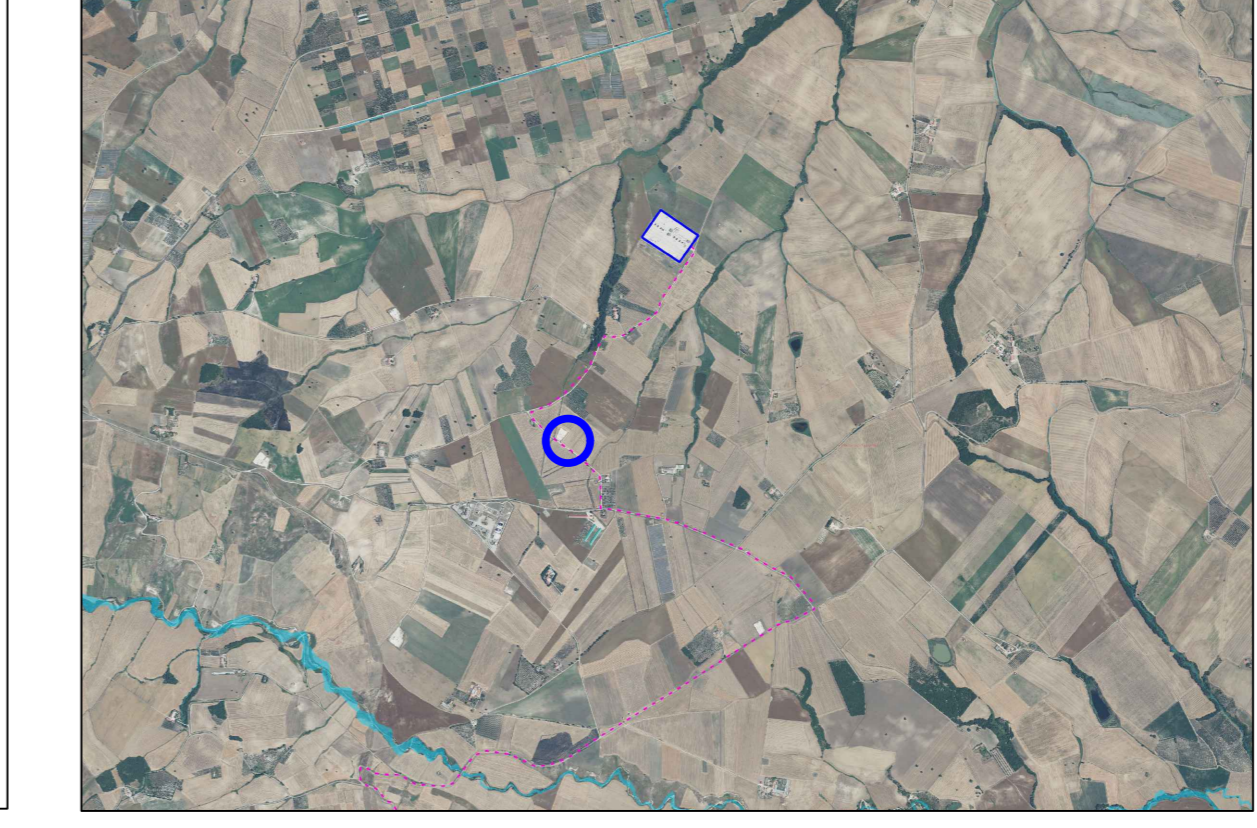
Foto - Interferenza 18



Inquadramento cartografico



Ortofoto



Pianta e sezione

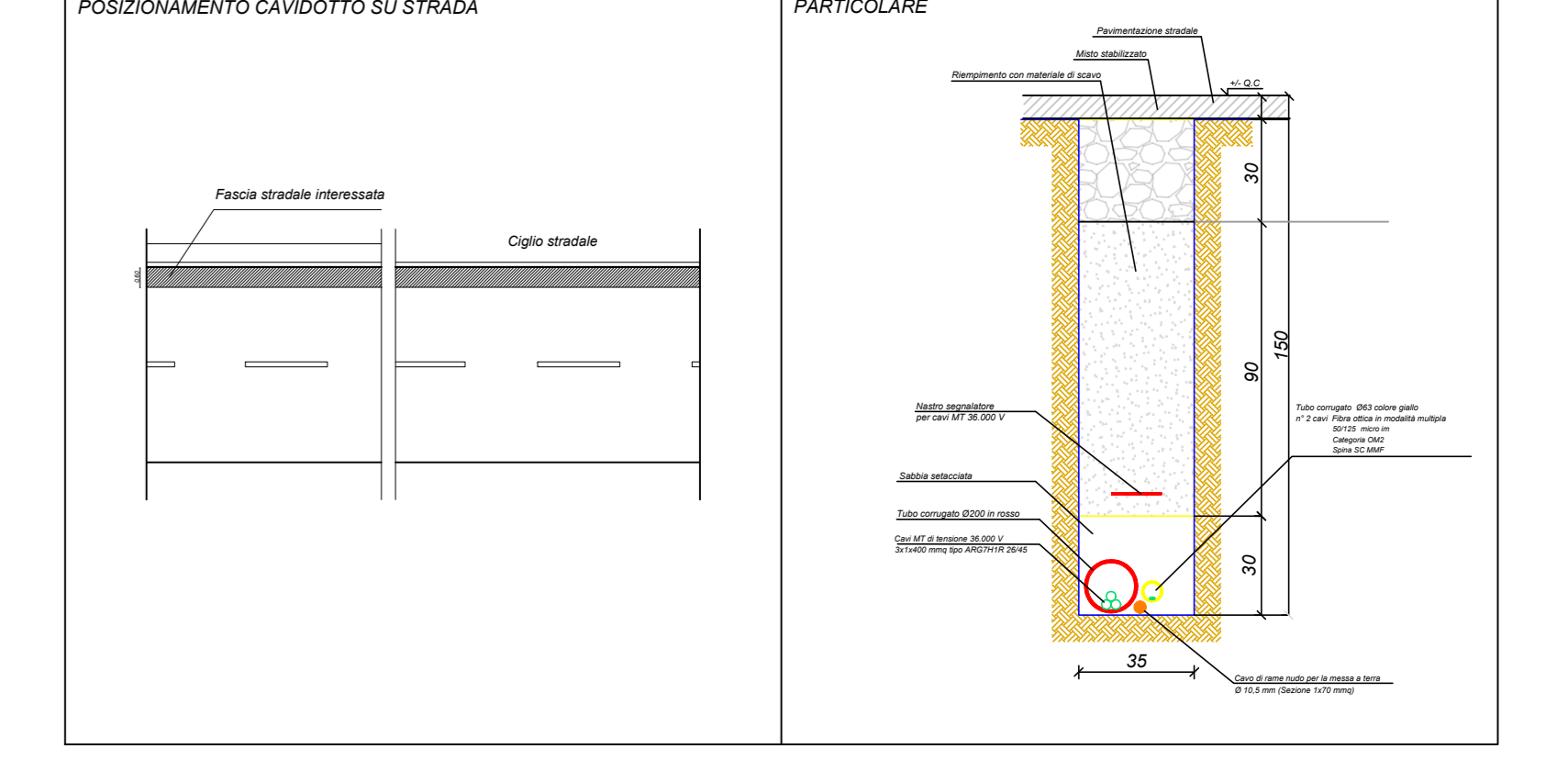
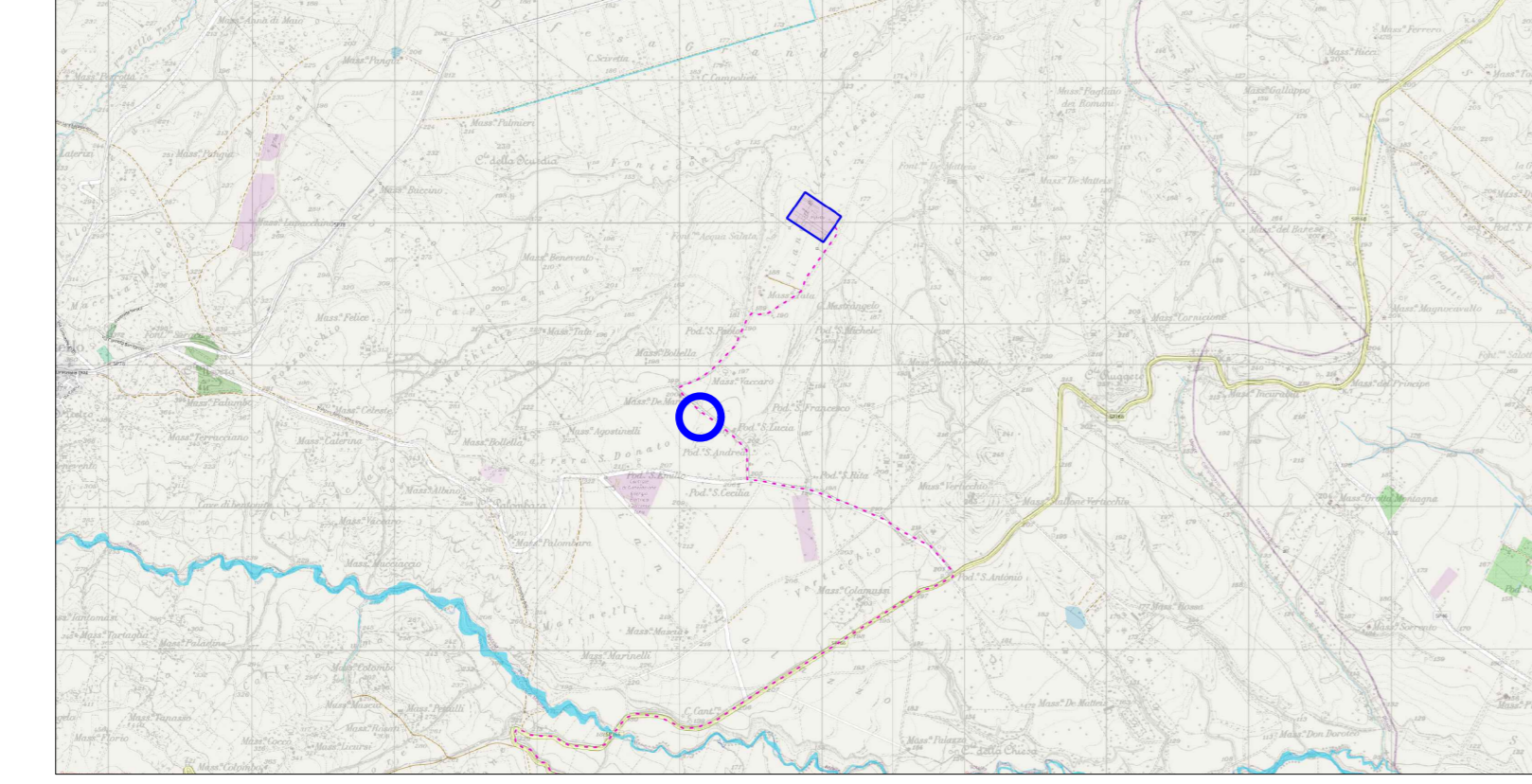


Foto - Interferenza 19



Inquadramento cartografico



Ortofoto



Pianta e sezione

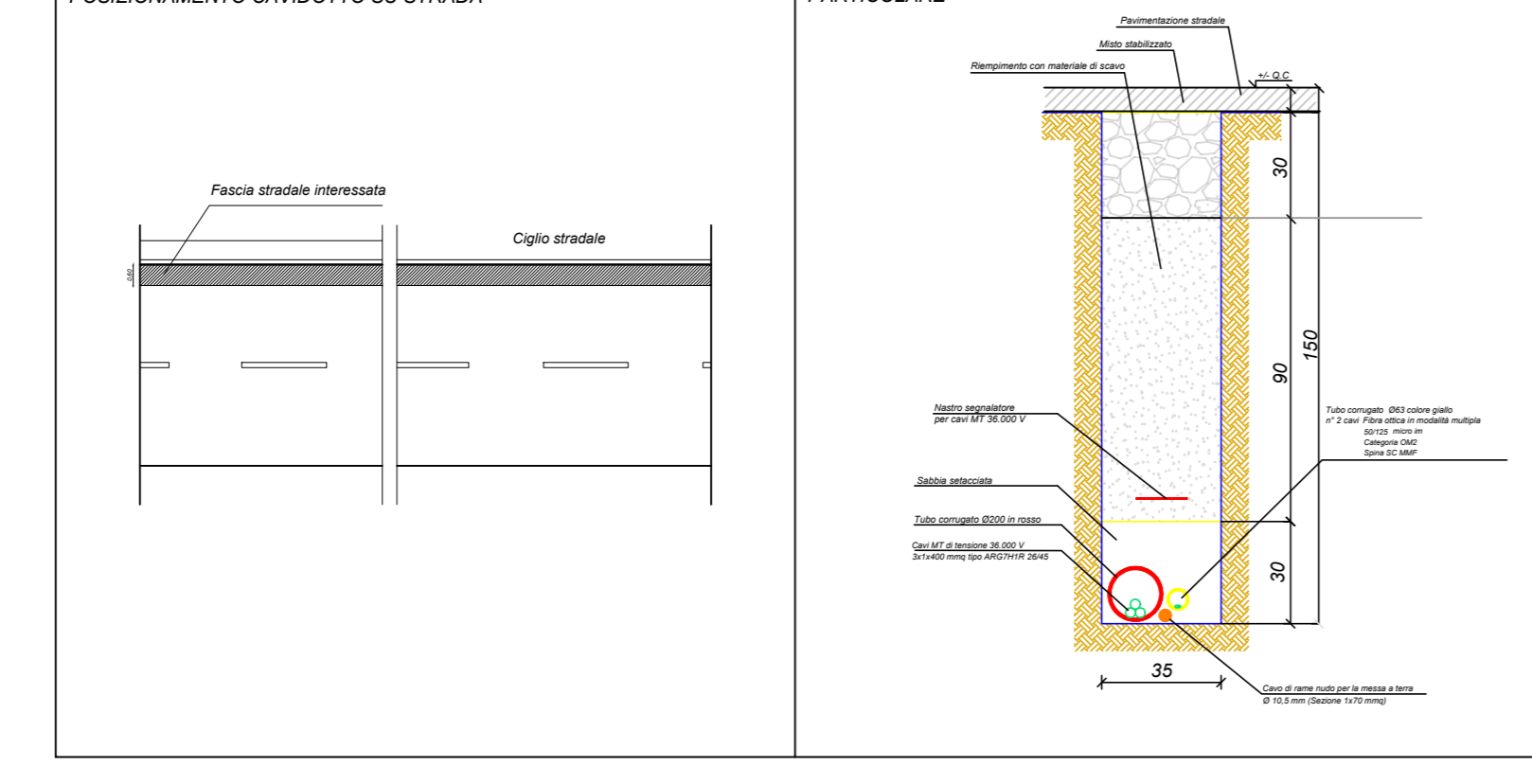
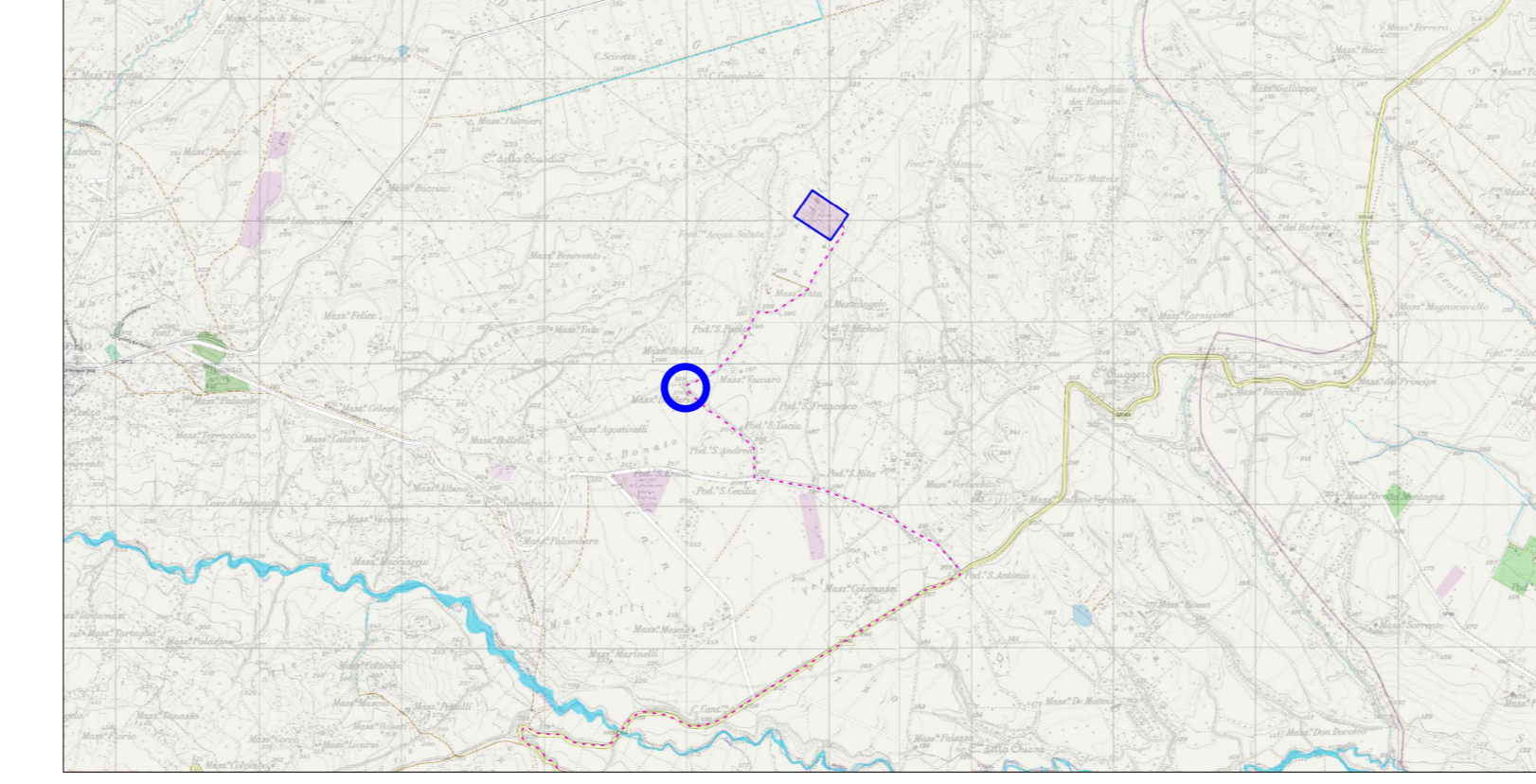


Foto - Interferenza 20



Inquadramento cartografico



Ortofoto



Pianta e sezione

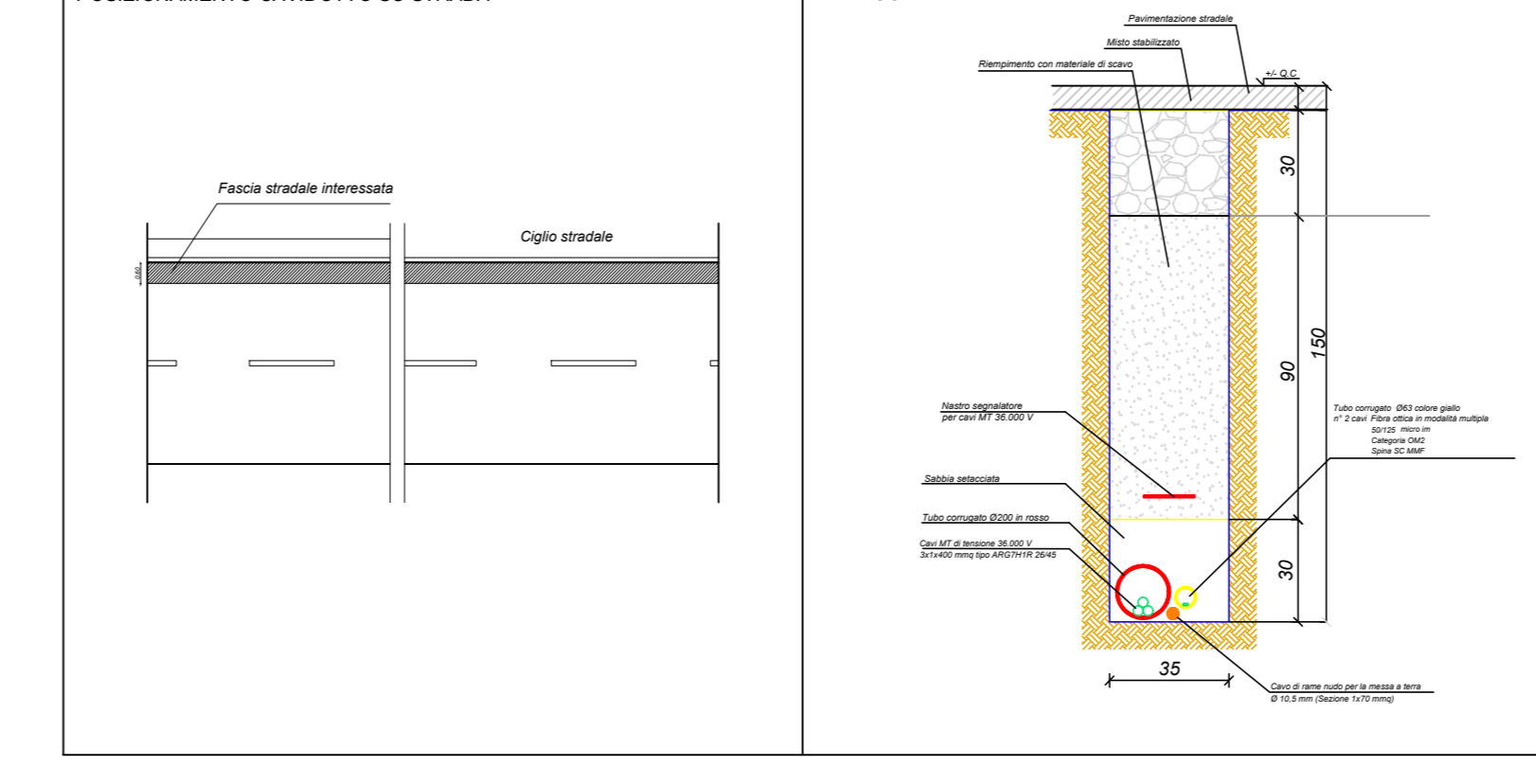
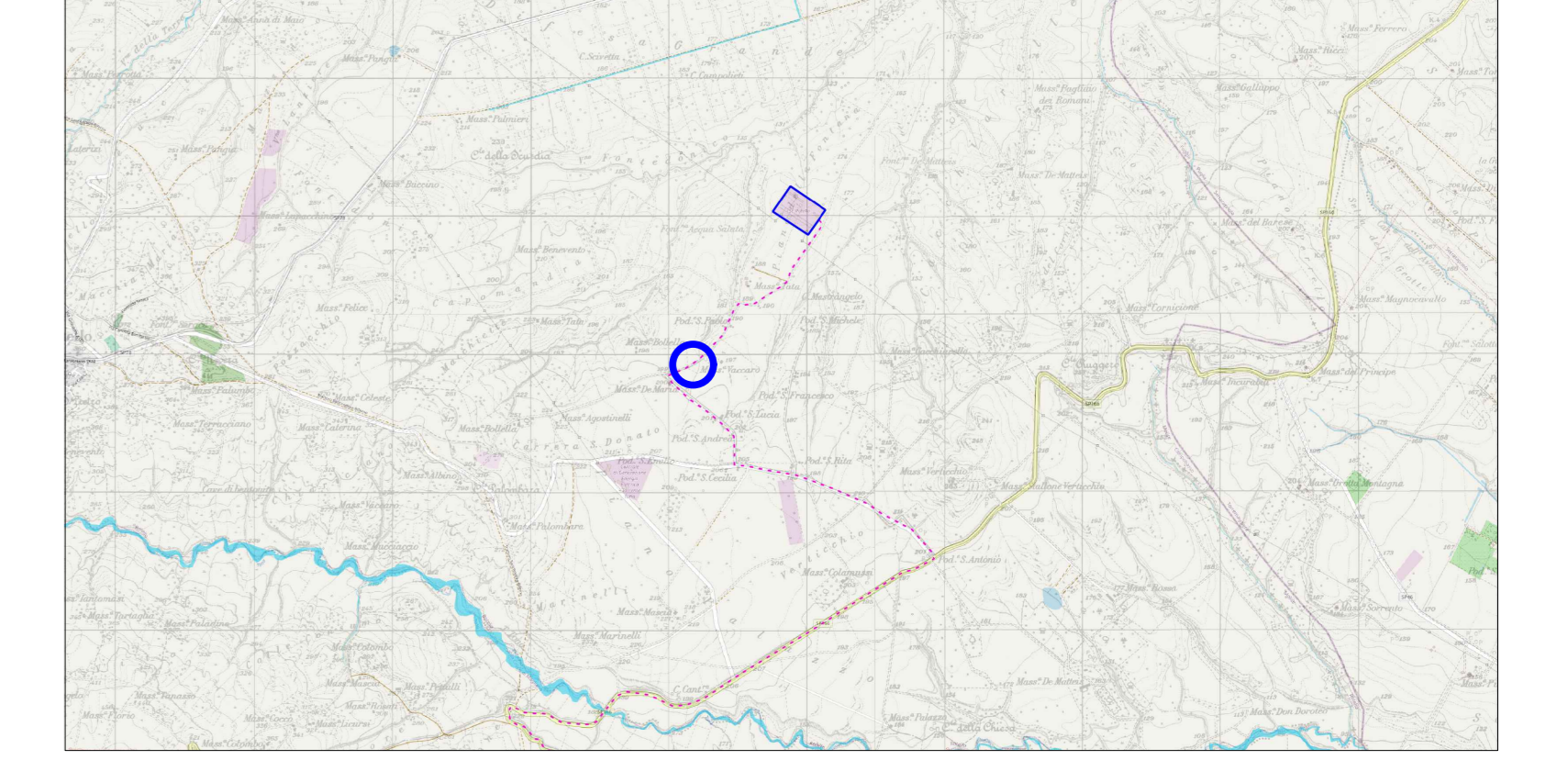


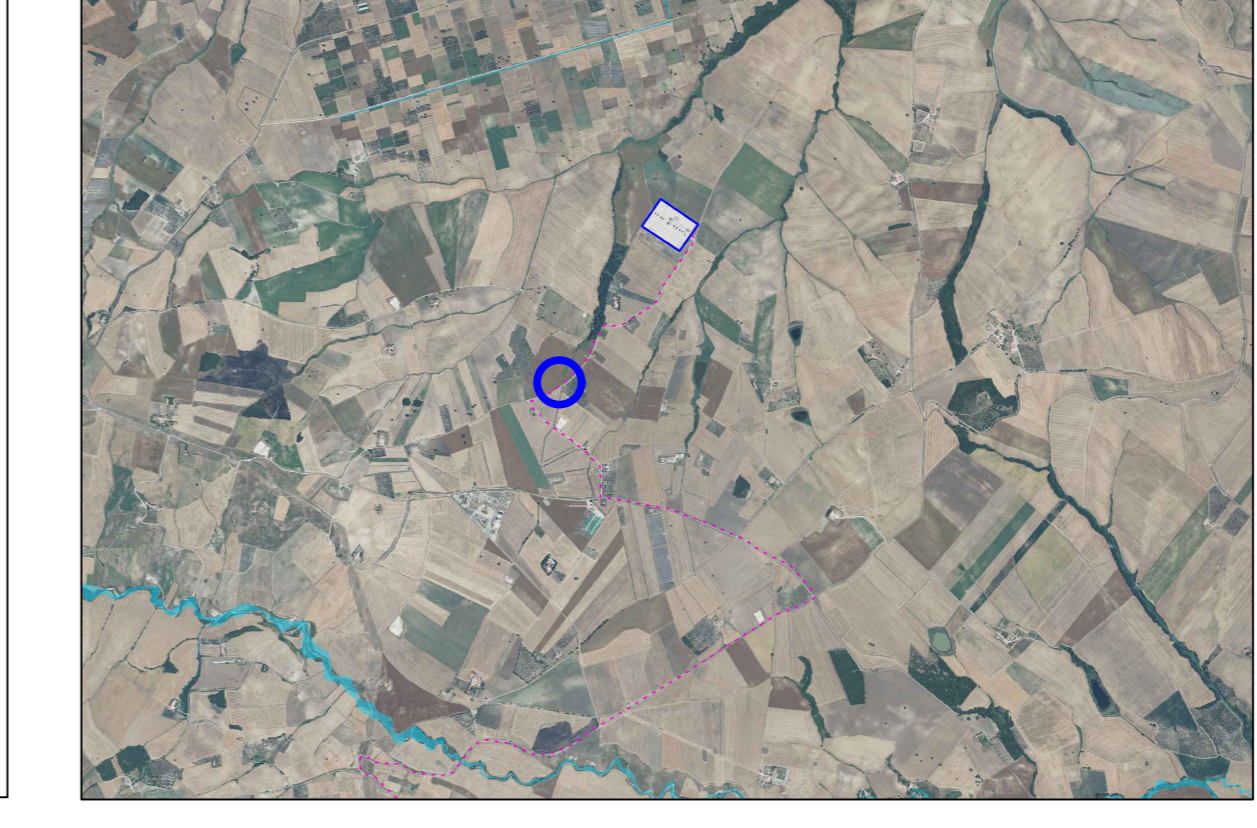
Foto - Interferenza 21



Inquadramento cartografico



Ortofoto



Pianta e sezione

