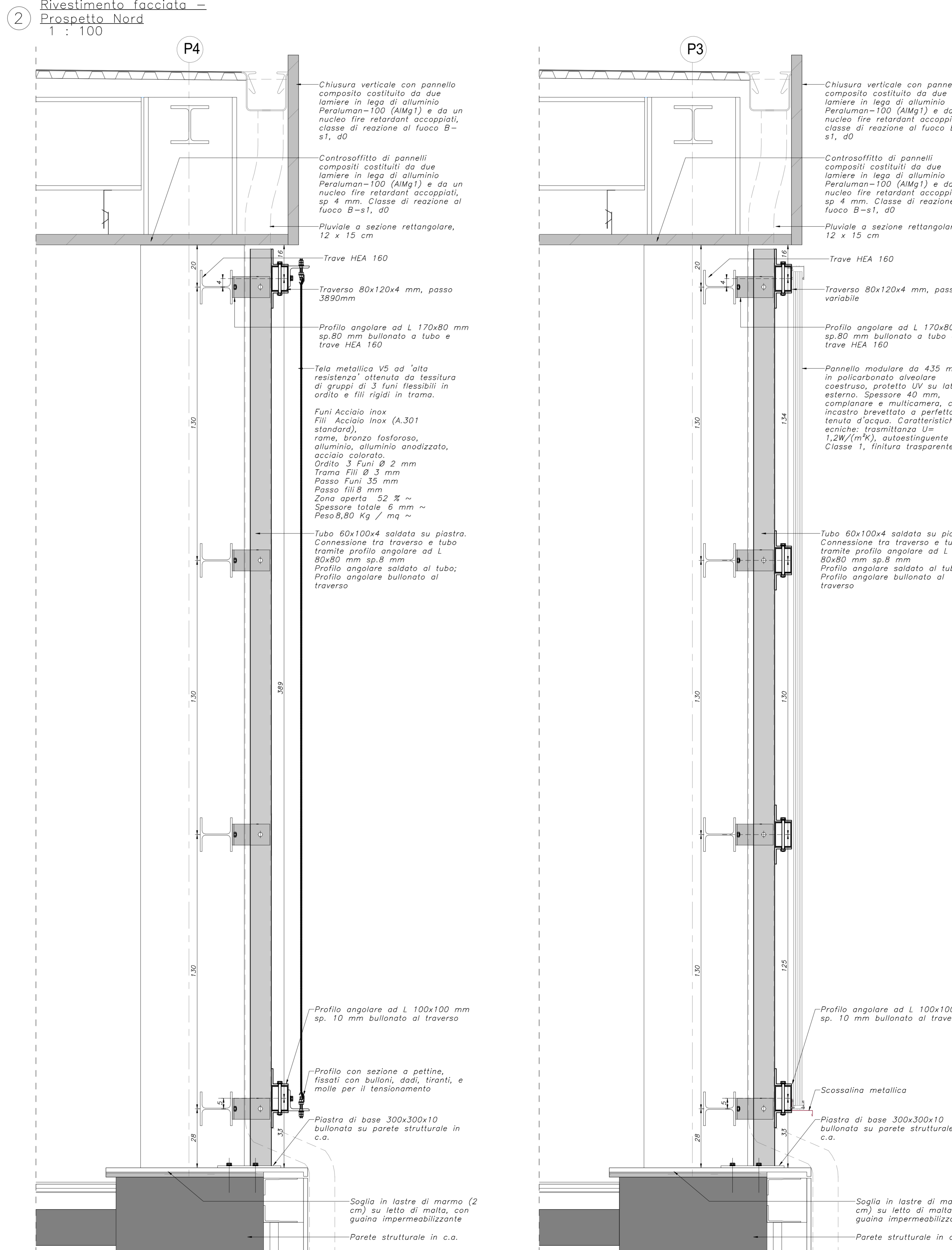
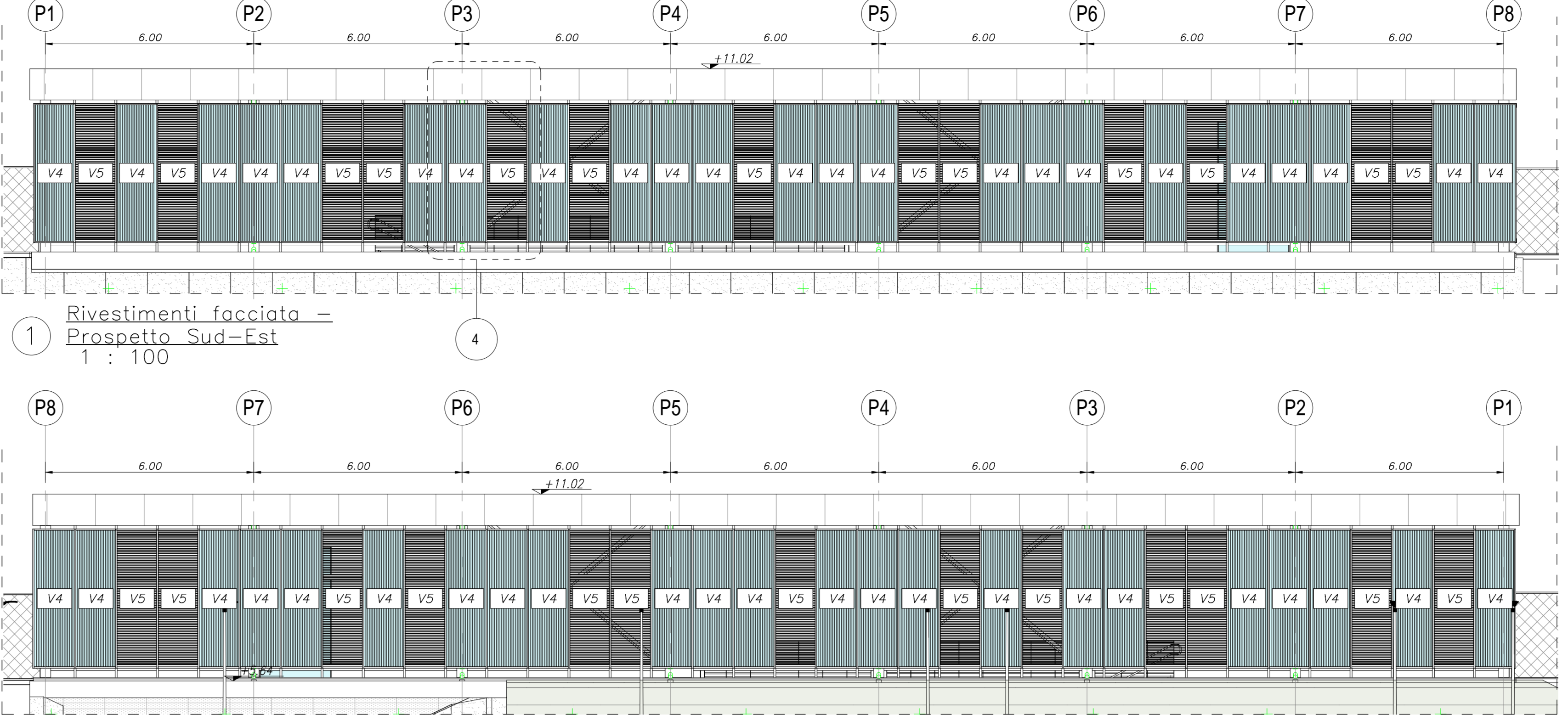
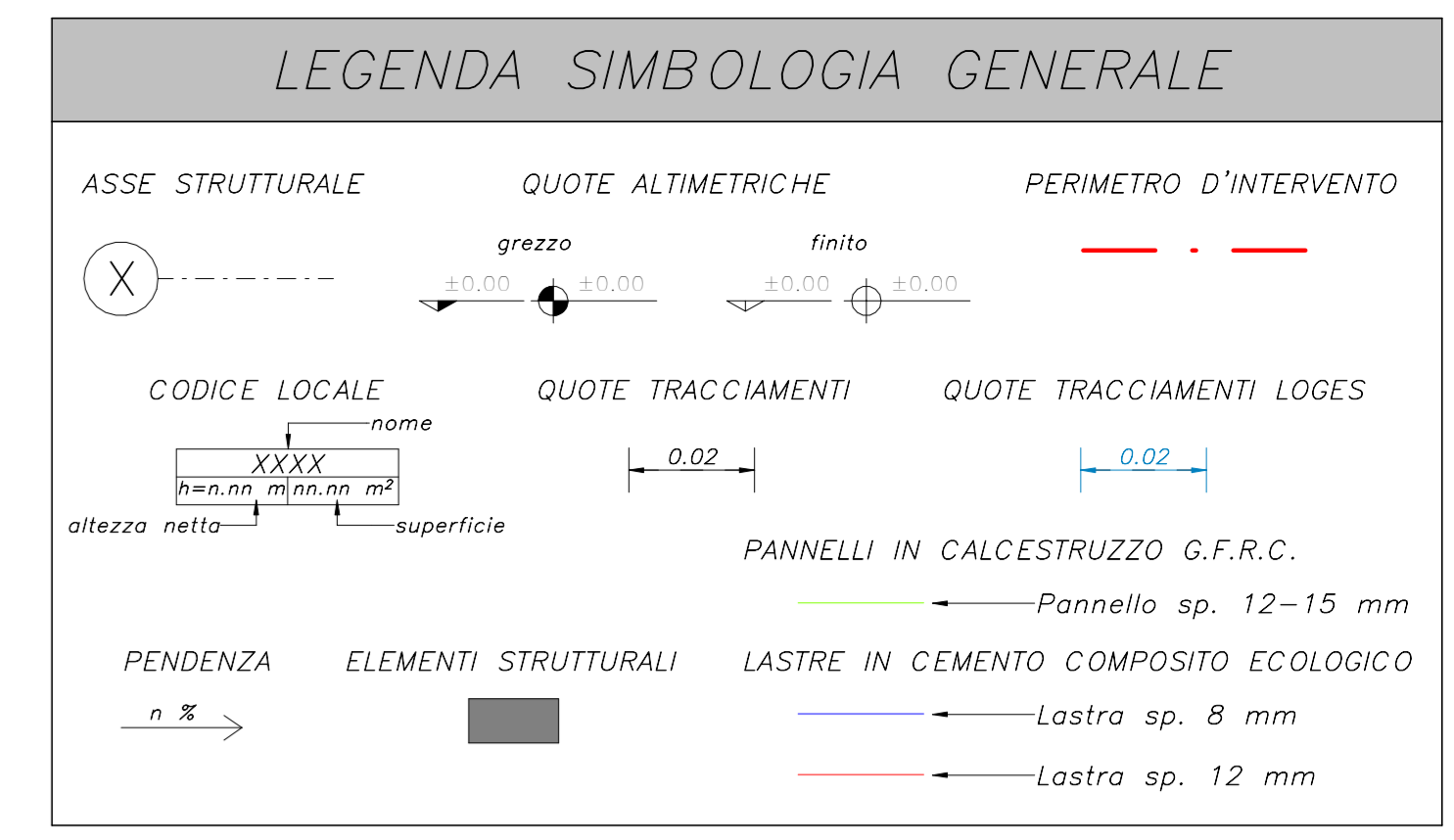


4 Prospetto tele metalliche e pollicarbonato 1 : 10



3 Sezioni Tele metalliche e Pollicarbonato 1 : 10



NOTE GENERALI

1. LA QUOTA RELATIVA A 0,00 DI PROGETTO È RIFERITA ALLA QUOTA DEL PAVIMENTO FINITO DEL FABBRICATO VEICOLI CON LA QUOTA ASSOLUTA CORRISPONDENTE CON 356,85 m s.l.m.

2. LE QUOTE ALTIMETRICHE SONO ESPRESSE IN METRI.

3. LE MISURE SONO ESPRESSE IN METRI PER SCALA DI DETTAGLIO INFERIORE A 1:100, IN CENTIMETRI PER SCALA DI DETTAGLIO COMPRESA TRA 1:50 E 1:10, IN MILIMETRI PER SCALA DI DETTAGLIO DA 1:5 A 1:1.

ELABORATI DI RIFERIMENTO

ELABORATI GRAFICI: Tracciamenti e finiture IF3A02ZBZFV01000008-012B

Sezioni architettoniche IF3A02ZBZFV01000008-007B

Asse di dettaglio IF3A02ZBZFV01000008-009B

IF3A02ZBZFV01000008-000B

IF3A02ZBZFV01000008-001B

IF3A02ZBZFV01000008-002B

IF3A02ZBZFV01000008-003B

IF3A02ZBZFV01000008-004B

IF3A02ZBZFV01000008-005B

IF3A02ZBZFV01000008-006B

IF3A02ZBZFV01000008-008B

IF3A02ZBZFV01000008-009B

IF3A02ZBZFV01000008-010B

IF3A02ZBZFV01000008-011B

IF3A02ZBZFV01000008-012B

IF3A02ZBZFV01000008-013B

IF3A02ZBZFV01000008-014B

IF3A02ZBZFV01000008-015B

IF3A02ZBZFV01000008-016B

IF3A02ZBZFV01000008-017B

IF3A02ZBZFV01000008-018B

IF3A02ZBZFV01000008-019B

IF3A02ZBZFV01000008-020B

IF3A02ZBZFV01000008-021B

IF3A02ZBZFV01000008-022B

IF3A02ZBZFV01000008-023B

IF3A02ZBZFV01000008-024B

IF3A02ZBZFV01000008-025B

IF3A02ZBZFV01000008-026B

IF3A02ZBZFV01000008-027B

IF3A02ZBZFV01000008-028B

IF3A02ZBZFV01000008-029B

IF3A02ZBZFV01000008-030B

IF3A02ZBZFV01000008-031B

IF3A02ZBZFV01000008-032B

IF3A02ZBZFV01000008-033B

IF3A02ZBZFV01000008-034B

IF3A02ZBZFV01000008-035B

IF3A02ZBZFV01000008-036B

IF3A02ZBZFV01000008-037B

IF3A02ZBZFV01000008-038B

IF3A02ZBZFV01000008-039B

IF3A02ZBZFV01000008-040B

IF3A02ZBZFV01000008-041B

IF3A02ZBZFV01000008-042B

IF3A02ZBZFV01000008-043B

IF3A02ZBZFV01000008-044B

IF3A02ZBZFV01000008-045B

IF3A02ZBZFV01000008-046B

IF3A02ZBZFV01000008-047B

IF3A02ZBZFV01000008-048B

IF3A02ZBZFV01000008-049B

IF3A02ZBZFV01000008-050B

IF3A02ZBZFV01000008-051B

IF3A02ZBZFV01000008-052B

IF3A02ZBZFV01000008-053B

IF3A02ZBZFV01000008-054B

IF3A02ZBZFV01000008-055B

IF3A02ZBZFV01000008-056B

IF3A02ZBZFV01000008-057B

IF3A02ZBZFV01000008-058B

IF3A02ZBZFV01000008-059B

IF3A02ZBZFV01000008-060B

IF3A02ZBZFV01000008-061B

IF3A02ZBZFV01000008-062B

IF3A02ZBZFV01000008-063B

IF3A02ZBZFV01000008-064B

IF3A02ZBZFV01000008-065B

IF3A02ZBZFV01000008-066B

IF3A02ZBZFV01000008-067B

IF3A02ZBZFV01000008-068B

IF3A02ZBZFV01000008-069B

IF3A02ZBZFV01000008-070B

IF3A02ZBZFV01000008-071B

IF3A02ZBZFV01000008-072B

IF3A02ZBZFV01000008-073B

IF3A02ZBZFV01000008-074B

IF3A02ZBZFV01000008-075B

IF3A02ZBZFV01000008-076B

IF3A02ZBZFV01000008-077B

IF3A02ZBZFV01000008-078B

IF3A02ZBZFV01000008-079B

IF3A02ZBZFV01000008-080B

IF3A02ZBZFV01000008-081B

IF3A02ZBZFV01000008-082B

IF3A02ZBZFV01000008-083B

IF3A02ZBZFV01000008-084B

IF3A02ZBZFV01000008-085B

IF3A02ZBZFV01000008-086B

IF3A02ZBZFV01000008-087B

IF3A02ZBZFV01000008-088B

IF3A02ZBZFV01000008-089B

IF3A02ZBZFV01000008-090B

IF3A02ZBZFV01000008-091B

IF3A02ZBZFV01000008-092B

IF3A02ZBZFV01000008-093B

IF3A02ZBZFV01000008-094B

IF3A02ZBZFV01000008-095B

IF3A02ZBZFV01000008-096B

IF3A02ZBZFV01000008-097B

IF3A02ZBZFV01000008-098B

IF3A02ZBZFV01000008-099B

IF3A02ZBZFV01000008-100B

IF3A02ZBZFV01000008-101B

IF3A02ZBZFV01000008-102B

IF3A02ZBZFV01000008-103B

IF3A02ZBZFV01000008-104B

IF3A02ZBZFV01000008-105B

IF3A02ZBZFV01000008-106B

IF3A02ZBZFV01000008-107B

IF3A02ZBZFV01000008-108B

IF3A02ZBZFV01000008-109B

IF3A02ZBZFV01000008-110B

IF3A02ZBZFV01000008-111B

IF3A02ZBZFV01000008-112B

IF3A02ZBZFV01000008-113B

IF3A02ZBZFV01000008-114B

IF3A02ZBZFV01000008-115B

IF3A02ZBZFV01000008-116B

IF3A02ZBZFV01000008-117B

IF3A02ZBZFV01000008-118B

IF3A02ZBZFV01000008-119B

IF3A02ZBZFV01000008-120B

IF3A02ZBZFV01000008-121B

IF3A02ZBZFV01000008-122B

IF3A02ZBZFV01000008-123B

IF3A02ZBZFV01000008-124B

IF3A02ZBZFV01000008-125B

IF3A02ZBZFV01000008-126B

IF3A02ZBZFV01000008-127B

IF3A02ZBZFV01000008-128B

IF3A02ZBZFV01000008-129B

IF3A02ZBZFV01000008-130B

IF3A02ZBZFV01000008-131B

IF3A02ZBZFV01000008-132B

IF3A02ZBZFV01000008-133B

IF3A02ZBZFV01000008-134B

IF3A02ZBZFV01000008-135B

IF3A02ZBZFV01000008-136B

IF3A02ZBZFV01000008-137B

IF3A02ZBZFV01000008-138B

IF3A02ZBZFV01000008-139B

IF3A02ZBZFV01000008-140B

IF3A02ZBZFV01000008-141B

IF3A02ZBZFV01000008-142B

IF3A02ZBZFV01000008-143B

IF3A02ZBZFV01000008-144B

IF3A02ZBZFV01000008-145B

IF3A02ZBZFV01000008-146B

IF3A02ZBZFV01000008-147B

IF3A02ZBZFV01000008-148B

IF3A02ZBZFV01000008-149B

IF3A02ZBZFV01000008-150B

IF3A02ZBZFV01000008-151B

IF3A02ZBZFV01000008-152B

IF3A02ZBZFV01000008-153B

IF3A02ZBZFV01000008-154B

IF3A02ZBZFV01000008-155B

IF3A02ZBZFV01000008-156B

IF3A02ZBZFV01000008-157B

IF3A02ZBZFV01000008-158B

IF3A02ZBZFV01000008-159B

IF3A02ZBZFV01000008-160B

IF3A02ZBZFV01000008-161B

IF3A02ZBZFV01000008-162B

IF3A02ZBZFV01000008-163B

IF3A02ZBZFV01000008-164B

IF3A02ZBZFV01000008-165B

IF3A02ZBZFV01000008-166B

IF3A02ZBZFV01000008-167B

IF3A02ZBZFV01000008-168B

IF3A02ZBZFV01000008-169B

IF3A02ZBZFV01000008-170B

IF3A02ZBZFV01000008-171B

IF3A02ZBZFV01000008-172B

IF3A02ZBZFV01000008-173B

IF3A02ZBZFV01000008-174B

IF3A02ZBZFV01000008-175B

IF3A02ZBZFV01000008-176B

IF3A02ZBZFV01000008-177B

IF3A02ZBZFV01000008-178B

IF3A02ZBZFV01000008-179B

IF3A02ZBZFV01000008-180B

IF3A02ZBZFV01000008-181B

IF3A02ZBZFV01000008-182B

IF3A02ZBZFV01000008-183B

IF3A02ZBZFV01000008-184B

IF3A02ZBZFV01000008-185B

IF3A02ZBZFV01000008-186B

IF3A02ZBZFV01000008-187B

IF3A02ZBZFV01000008-188B

IF3A02ZBZFV01000008-189B

IF3A02ZBZFV01000008-190B

IF3A02ZBZFV01000008-191B

IF3A02ZBZFV01000008-192B

IF3A02ZBZFV01000008-193B

IF3A02ZBZFV01000008-194B

IF3A02ZBZFV01000008-195B

IF3A02ZBZFV01000008-196B

IF3A02ZBZFV01000008-197B

IF3A02ZBZFV01000008-198B

IF3A02ZBZFV01000008-199B

IF3A02ZBZFV01000008-200B

COMMITTENTE: RFI RETE FERROVIARIA ITALIANA GRUPPO FERROVIE DELLO STATO ITALIANE

DIREZIONE LAVORI: ITALFERR GRUPPO FERROVIE DELLO STATO ITALIANE

APPALTATORE: SOCI: webuild Italia PIZZAROTTI SINCE 1910

HIRPINIA-ORSARA AV

PROGETTAZIONE: MANDATARIA: ROCKSOUL NETENGINEERING PINI GCF ELETTRON-PEK

PROGETTO ESECUTIVO

ITINERARIO NAPOLI - BARI RADDOPPIO TRATTA APICE - ORSARA IL LOTTO FUNZIONALE HIRPINIA - ORSARA FV - STAZIONI E FERMATE FV01 - STAZIONE ORSARA ELABORATI ARCHITETTONICI

Abaco di dettaglio - Rivestimento in tele metalliche e pollicarbonato

APPALTATORE	DIRETTORE DELLA PROGETTAZIONE	PROGETTISTA
Consorzio HIRPINIA - ORSARA AV	Il Responsabile integrazione fra le varie prestazioni specialistiche Ing. G. Casarini	NETENGINEERING Ing. R. Zanoni

COMMESSA	LOTTO	FASE	ENTE	TIPO DOC.	OPERADISCIPLINA	PROGR.	REV.	SCALA:
IF3A	02	E	ZZ	BZ	FV0109	001	B	VARIE

Rev.	Descrizione	Redatto	Data	Verificato	Data	Approvato	Data	Autorizzato	Data
A	C 08.00 - Emissione 18gg	M. Mizzoni	08/03/22	R. Gallo	08/03/22	C. Vianali	08/03/22	Ing. R. Zanoni	08/03/22
B	C 08.01 - A valle del contraddittorio	M. Mizzoni	08/03/22	C. Castagna	08/03/22	C. Vianali	08/03/22		08/03/22

File: IF3A02ZBZFV01000008-118.dwg r. Elab.: