

BARI

NAPOLI

GN01 (BD) HIRPINIA L. TOTALE=27093,78m

GN01 (BD) HIRPINIA L. TOTALE=2705

GN01 (BD) HIRPINIA L=14869,94m  
TRATTO CON SCAVO MECCANIZZATO  
LATO BARI

CAMERONE  
SMONTAGGIO TBM  
L=16,26

AREA SICUREZZA - GN01 (BD)  
L=145,95m

GN01 (BD) HIRPINIA L=11662,30  
TRATTO CON SCAVO MECCANIZZATO  
LATO NAPOLI

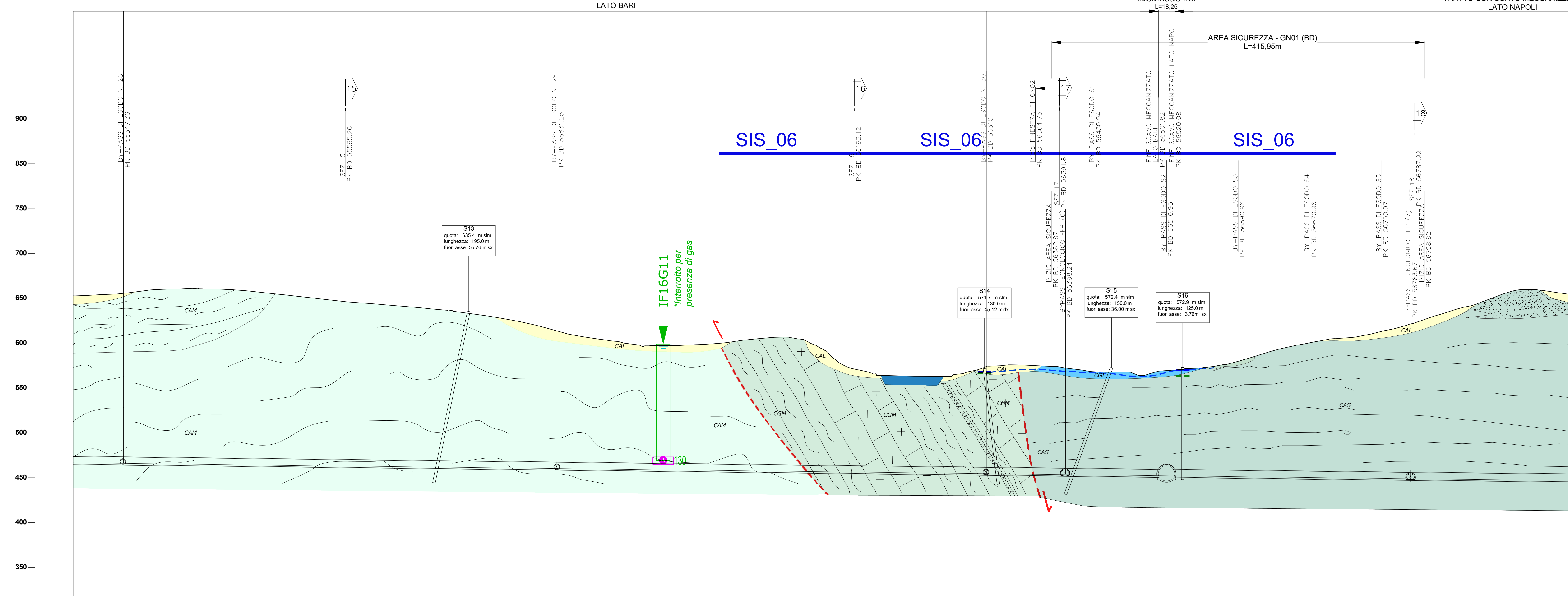


Table with 2 columns: 'N. Sezione' and 'Quota' (m). It lists elevation data for various points along the profile.

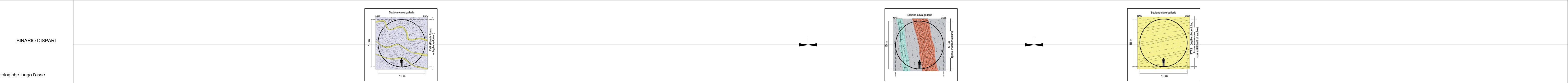


Table titled 'INTERFERENZE COPERTURE (m)'. It shows the vertical distribution of different geological layers and their thicknesses.

Table titled 'FASE CONOSCITIVA IDROGEOLOGICA'. It provides a detailed classification of geological units based on lithology and hydrogeological characteristics.

LEGENDA

Table defining symbols for 'COMPLESSO IDROGEOLOGICO', 'TIPO DI PERMEABILITÀ', and 'GRADO DI PERMEABILITÀ'. It includes descriptions of geological units and their permeability characteristics.

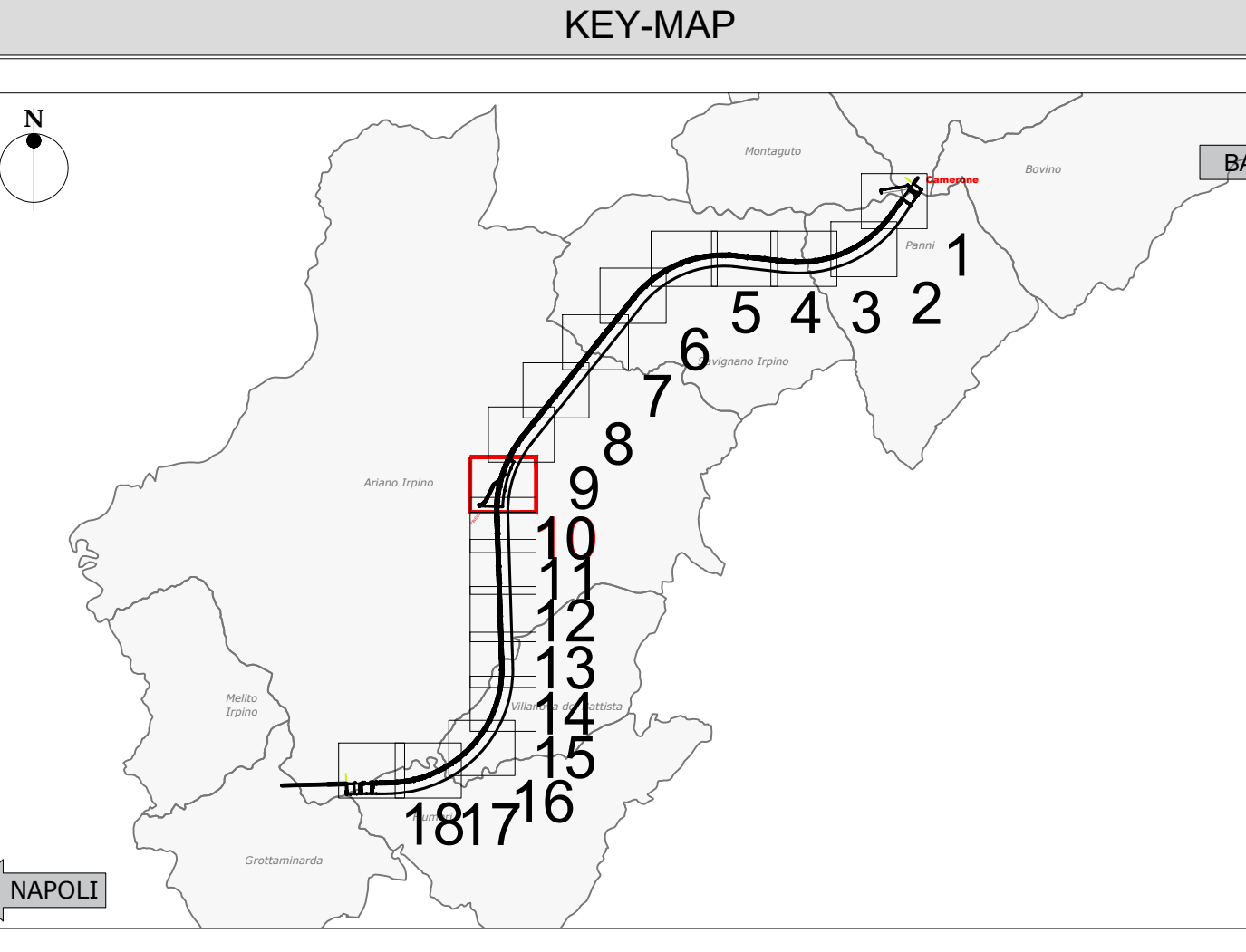
Table defining symbols for 'COMPLESSI DELLE UNITÀ DEL SUBSTRATO'. It lists various geological units and their corresponding symbols.

Table defining symbols for 'COMPLESSO calcareo', 'COMPLESSO calcareo-marnoso', and 'COMPLESSO calcareo-marnoso argilloso'. It describes the characteristics of these geological units.

Table defining symbols for 'COMPLESSO argilloso-sabbioso', 'COMPLESSO argilloso-marnoso e marnoso-argilloso', and 'COMPLESSO gessoso-marnoso'. It describes the characteristics of these geological units.

LEGENDA INDAGINI GEOGNOSTICHE

Table defining symbols for 'INDAGINI PREGRESSE' and 'INDAGINI GEOGNOSTICHE PE'. It lists various types of geotechnical investigations and their symbols.



Administrative and project information section. It includes the name of the project, the client, the contractor, and the project manager. It also includes a table with project milestones and a table with the names of the project team members.