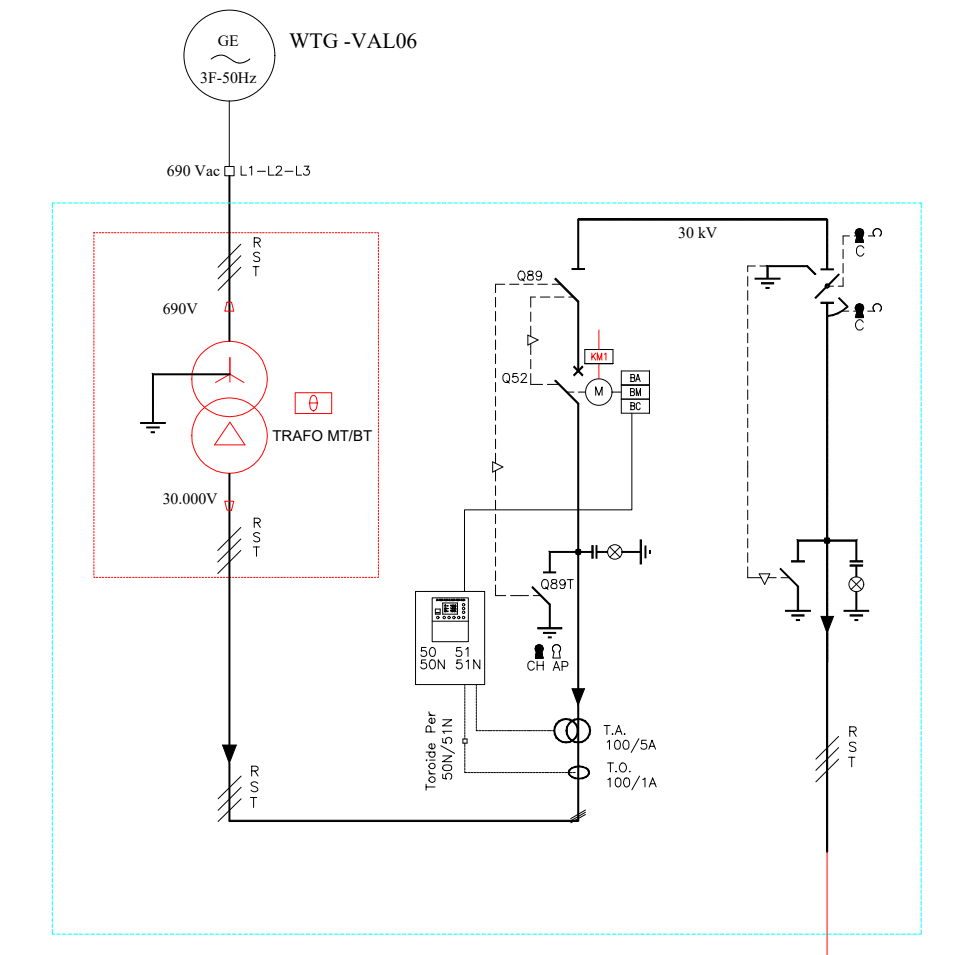


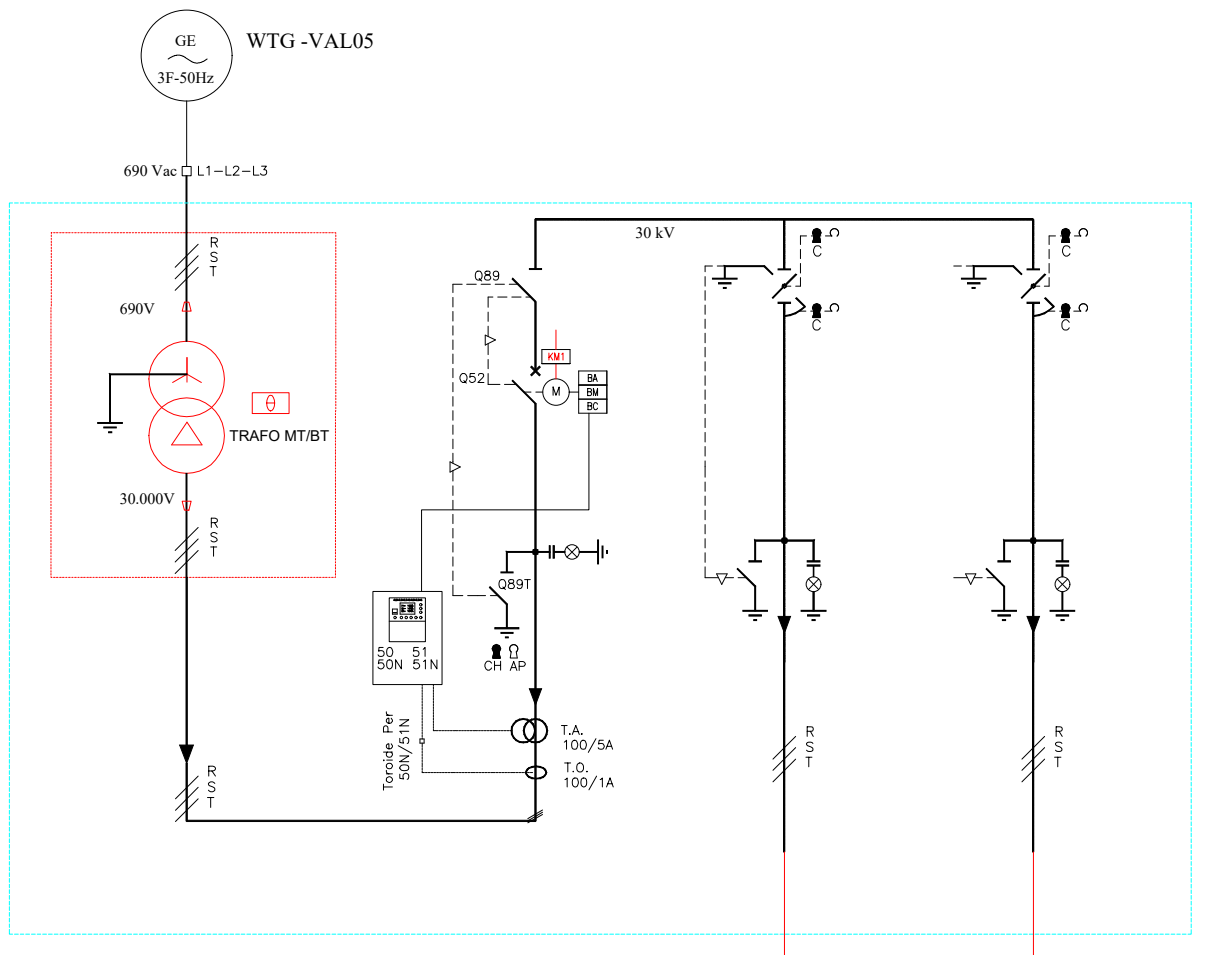
WTG 01

WTG 07

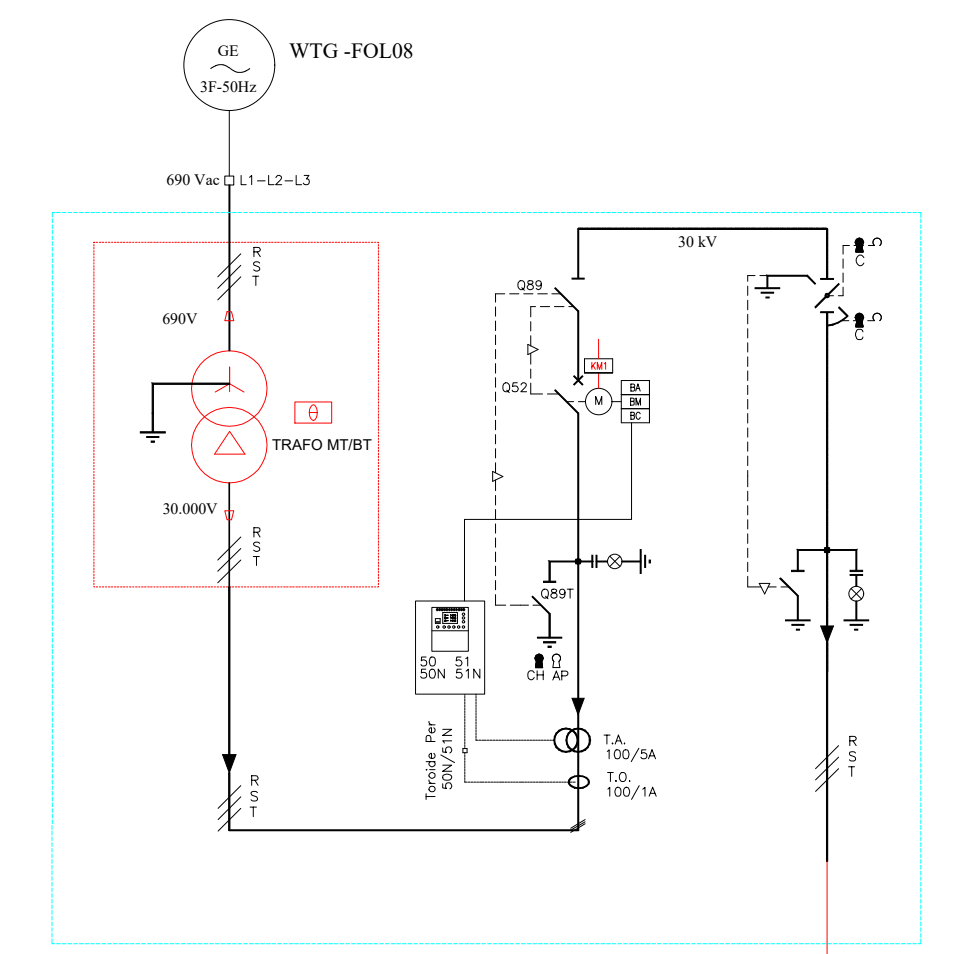
WTG 02



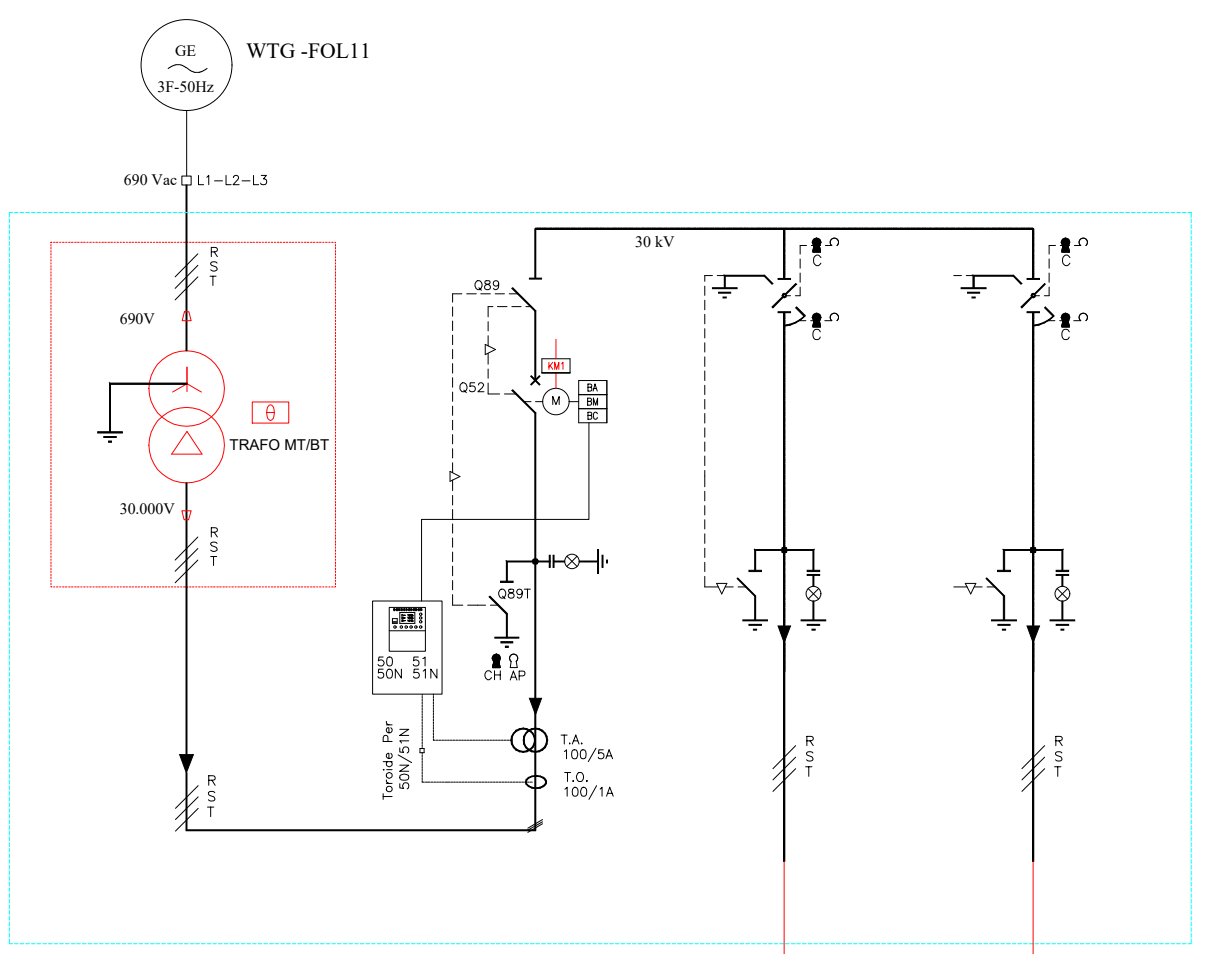
WTG 06



WTG 03



WTG 04



WTG 05

CAVO 18/3kV ARE4H1RX
Intorno 1,5 m - L. 1400 m - 1x(3x240)
DV=0,68%

CAVO 18/3kV ARE4H1RX
Intorno 1,5 m - L. 4750 m - 2x(3x300)
DV=1,60%

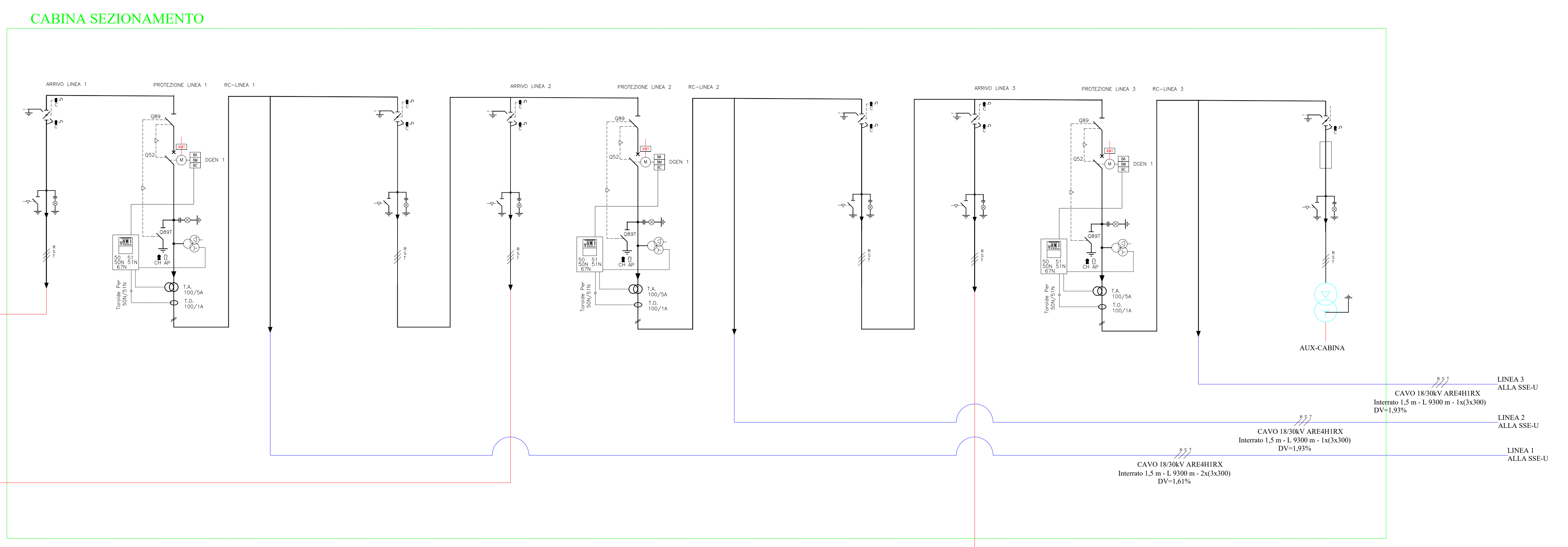
CAVO 18/3kV ARE4H1RX
Intorno 1,5 m - L. 4150 m - 2x(3x300)
DV=1,60%

CAVO 18/3kV ARE4H1RX
Intorno 1,5 m - L. 4250 m - 1x(3x240)
DV=0,68%

CAVO 18/3kV ARE4H1RX
Intorno 1,5 m - L. 1200 m - 1x(3x300)
DV=0,74%

CAVO 18/3kV ARE4H1RX
Intorno 1,5 m - L. 1400 m - 1x(3x240)
DV=0,68%

CAVO 18/3kV ARE4H1RX
Intorno 1,5 m - L. 4000 m - 1x(3x300)
DV=0,64%



CABINA SEZIONAMENTO

CAVO 18/3kV ARE4H1RX
Intorno 1,5 m - L. 9000 m - 1x(3x300)
DV=1,93%

CAVO 18/3kV ARE4H1RX
Intorno 1,5 m - L. 9000 m - 1x(3x300)
DV=1,93%

CAVO 18/3kV ARE4H1RX
Intorno 1,5 m - L. 9000 m - 2x(3x300)
DV=1,61%



COMUNI DI MAFALDA E MONTENERO DI BISACCIA (CB)

PROGETTO PER LA REALIZZAZIONE DI
IMPIANTO EOLICO
"MAFALDA"


 Via Trani, 1
63014 - San Benedetto del Tronto (AP) - Italy
Tel: +39 0735 41138
Mail: cube@cube.it

STUDIO ELABORATO			
SCHEMI UNIFILARI			
CODICE ELABORATO	FORMATO	N. TEL.	FASE
PD019		42	PROGETTO DEFINITIVO

REV.	DESCRIZIONE	DATA	REDAATTO	VERIFICATO	APPROVATO
01	Primo Emissione	31/07/2019	SC	SC	MS
02					
03					
04					