

LEGGENDA

- Inverter di pertinenza Smart Transformer Station - PS1
- Inverter di pertinenza Smart Transformer Station - PS2
- Inverter di pertinenza Smart Transformer Station - PS3
- Inverter di pertinenza Smart Transformer Station - PS4
- Inverter di pertinenza Smart Transformer Station - PS5
- Inverter di pertinenza Smart Transformer Station - PS6
- Inverter di pertinenza Smart Transformer Station - PS7
- Inverter di pertinenza Smart Transformer Station - PS8
- Inverter di pertinenza Smart Transformer Station - PS9
- Inverter di pertinenza Smart Transformer Station - PS10
- Inverter di pertinenza Smart Transformer Station - PS11
- Inverter di pertinenza Smart Transformer Station - PS12
- Inverter di pertinenza Smart Transformer Station - PS13
- Inverter di pertinenza Smart Transformer Station - PS14
- Inverter di pertinenza Smart Transformer Station - PS15
- Recinzione perimetrale
- Viabilità Interna
- Cabina Power Station
- Area mitigazione perimetrale
- Cabina Elettrica Generale MT
- O&M - Area di servizio
- Tubazione in PVC rigido per cavidotti interni - Linee Fibra Ottica interne al campo

SmartLogger3000B

- Smart:** Connecting up to 150 inverters. One-click commissioning.
- Simple:** Deployment wizard allowed, including parameter configuration, device connection.
- Reliable:** Safety improvement by lightning protection module.

Technical Specifications	SmartLogger3000B	SmartLogger3000B with SmartModule1000A
Device Management		
Max. Number of Manageable Devices	300	150
Max. Number of Manageable Inverters	150	75
Communication Interface		
WAN	WAN x 1, 10 / 100 / 1,000 Mbps	WAN x 1, 10 / 100 / 1,000 Mbps
LAN	LAN x 1, 10 / 100 / 1,000 Mbps	LAN x 1, 10 / 100 / 1,000 Mbps
Optical Ethernet	SFP x 2, 100 / 1,000 Mbps	SFP x 2, 100 / 1,000 Mbps
MBUS	MBUS x 1, 115.2 Kbps, Compatible with PLC	MBUS x 1, 115.2 Kbps, Compatible with PLC
RS485	COM x 3, 1,200 / 2,400 / 4,800 / 9,600 / 19,200 / 115,200 bps	COM x 6, 1,200 / 2,400 / 4,800 / 9,600 / 19,200 / 115,200 bps
Digital Analog Input / Output	DI x 4, DO x 2, AI x 4	DI x 8, DO x 2, AI x 7
PT100 / PT1000	0	2
Active DC	12 V, 100 mA (connection with relay, sensor)	
Communication Protocol		
Ethernet	Modbus-TCP, IEC 60870-5-104	Modbus-TCP, IEC 60870-5-104
RS485	Modbus-RTU (IEC 60870-5-103) (standard), DL / 175G	Modbus-RTU (IEC 60870-5-103) (standard), DL / 175G
Interaction		
LED	LED indicator x 5	LED indicator x 5
WEB	Embedded Web	Embedded Web
USB	USB 2.0 x 1	USB 2.0 x 1
APP	Communication by WLAN for commissioning	Communication by WLAN for commissioning
Environment		
Operating Temperature Range	-40°C ~ 60°C	-40°C ~ 60°C
Storage Temperature Range	-40°C ~ 70°C	-40°C ~ 70°C
Relative Humidity (non-condensing)	5% ~ 95%	5% ~ 95%
Max. Operating Altitude	4,000 m	4,000 m
Electrical		
Power Adapter	AC Input: 100 V ~ 240 V, 50 Hz / 60 Hz DC output: 12 V, 2 A	AC Input: 100 V ~ 240 V, 50 Hz / 60 Hz DC output: 12 V, 2 A
DC Power Supply	Typical 0 W, Max. 15 W	24 V, 0.8 A
Power Consumption	Typical 10 W, Max. 18 W	Typical 10 W, Max. 18 W
Mechanical		
Dimensions (W x H x D, without mounting ears)	225 x 160 x 44 mm	350 x 160 x 44 mm
Weight	2 kg	3 kg
Protection Degree	IP20	IP20
Installation Options	Wall Mounting, DIN Rail Mounting, Tabletop Mounting	Wall Mounting, DIN Rail Mounting, Tabletop Mounting

PROGETTO DELL'IMPIANTO AGRIVOLTAICO E DELLE RELATIVE OPERE DI CONNESSIONE DA REALIZZARE NEL COMUNE DI MARTIS e CHIARAMONTI (SS) CON POTENZA IN IMMISSIONE PARI A 39.2MW. DENOMINAZIONE IMPIANTO "19185 - MARTIS"

PROPOSTORE
 LUCE MARTIS S.R.L.
 Via N. Saruto, 22
 42017 Novellara (RE)

PROGETTISTI
 P.I. Luca Castellani
 Collegio Periti RE n. 1101

PROGETTAZIONE DELL'IMPIANTO
 P.I. Luca Castellani
 Collegio Periti RE n. 1101

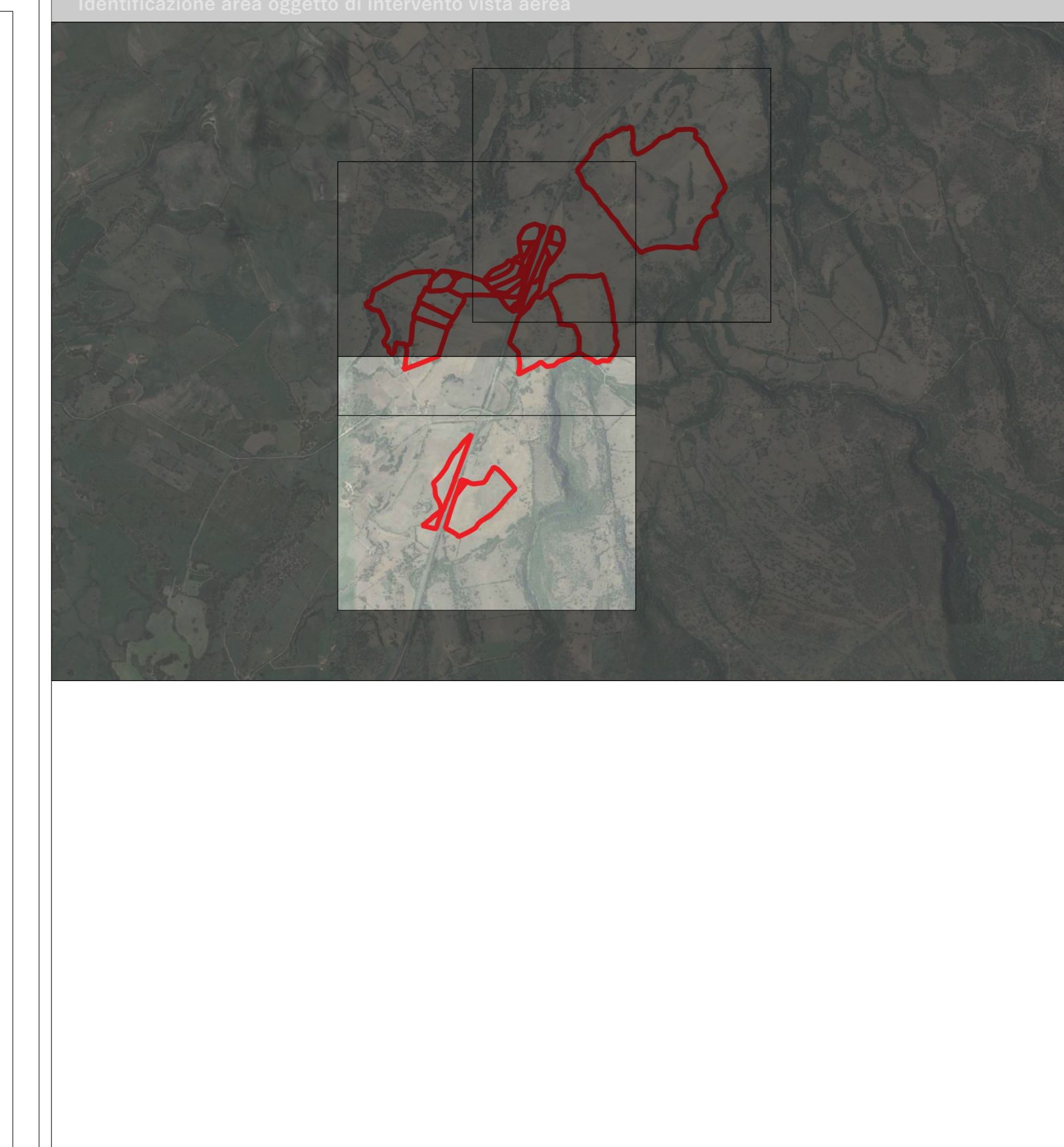
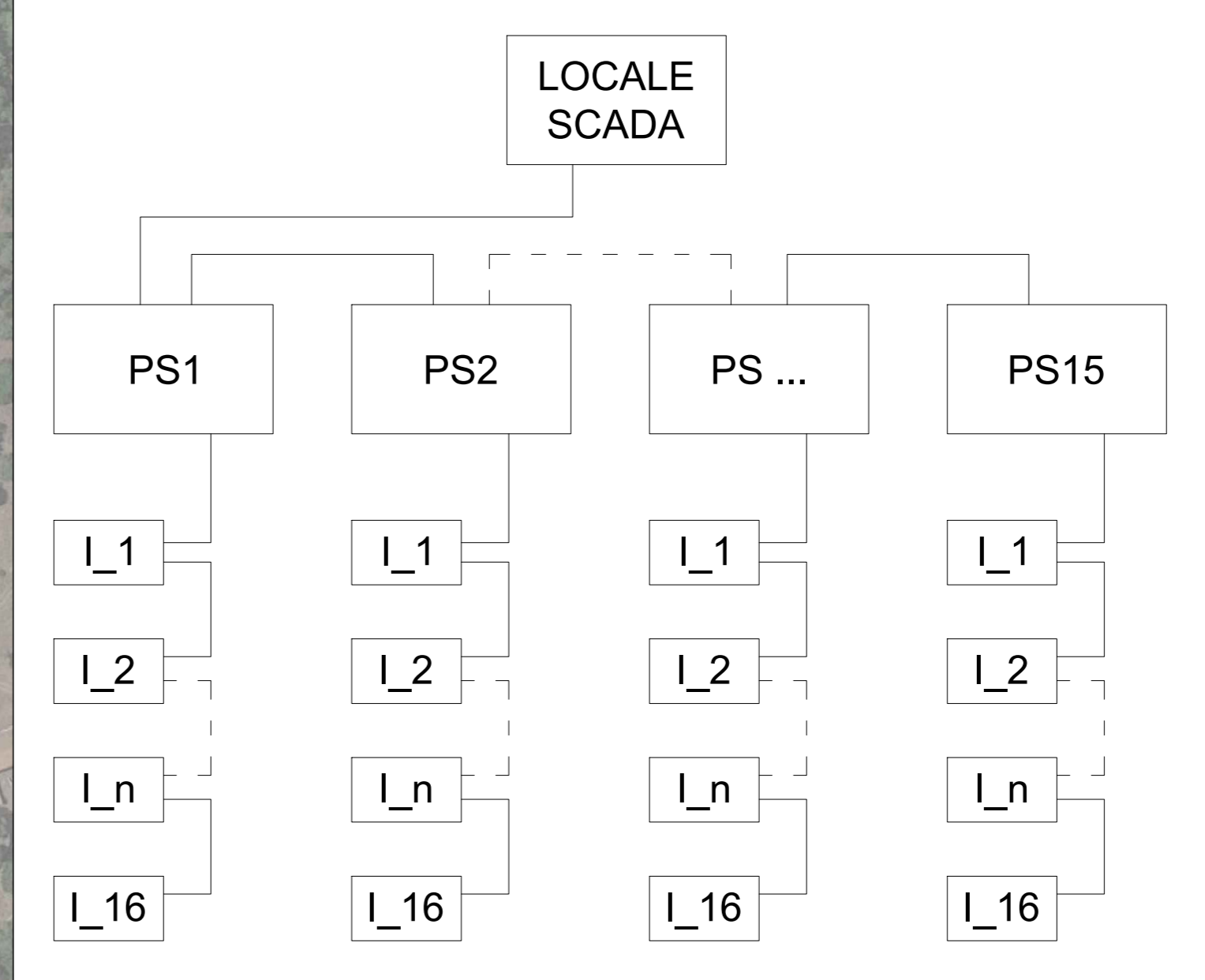
Procedura di Valutazione Impatto Ambientale ai sensi dell'art. 23 del D.Lgs 152 / 2006 e ss. mm. ii.

Autorità competente
 Ministero dell'Ambiente e della Sicurezza Energetica

Tabella revisioni	Tabella N°
03	
02	
01	
00	
REV. DATA	PRIMA EMISSIONE DESCRIZIONE FIORI F. CASACCIO S. REDATTO CONTROLLATO

Fase di Progetto	Elaborato	Tabella N°
DEFINITIVO	LAYOUT CANALIZZAZIONI SPECIALI	PDD12_T1

File: 00_Layout_Quadri_Campo_Canalizzazioni_Speciali_A0_T1 Scala: 1:2000



LEGENDA

- Inverter di pertinenza Smart Transformer Station - PS1
- Inverter di pertinenza Smart Transformer Station - PS2
- Inverter di pertinenza Smart Transformer Station - PS3
- Inverter di pertinenza Smart Transformer Station - PS4
- Inverter di pertinenza Smart Transformer Station - PS5
- Inverter di pertinenza Smart Transformer Station - PS6
- Inverter di pertinenza Smart Transformer Station - PS7
- Inverter di pertinenza Smart Transformer Station - PS8
- Inverter di pertinenza Smart Transformer Station - PS9
- Inverter di pertinenza Smart Transformer Station - PS10
- Inverter di pertinenza Smart Transformer Station - PS11
- Inverter di pertinenza Smart Transformer Station - PS12
- Inverter di pertinenza Smart Transformer Station - PS13
- Inverter di pertinenza Smart Transformer Station - PS14
- Inverter di pertinenza Smart Transformer Station - PS15
- Recinzione perimetrale
- Viabilità Interna
- Cabina Power Station
- Area mitigazione perimetrale
- Cabina Elettrica Generale MT
- O&M - Area di servizio
- Tubazione in PVC rigido per caviddoti interni - Linee Fibra Ottica interne al campo

SmartLogger3000B

Smart
Connecting up to 150 inverters, One-click commissioning

Simple
Deployment wizard allowed, including parameter configuration, device connection

Reliable
Safety improvement by lightning protection module

Technical Specifications	SmartLogger3000B	SmartLogger3000B with SmartModule1000A
Device Management		
Max. Number of Manageable Devices	300	150
Communication Interface		
WAN	WAN x 1, 10 / 100 / 1,000 Mbps	WAN x 1, 10 / 100 / 1,000 Mbps
LAN	LAN x 1, 10 / 100 / 1,000 Mbps	LAN x 1, 10 / 100 / 1,000 Mbps
Optical Ethernet	Optical Ethernet	Optical Ethernet
MBUS	MBUS x 1, 115.2 Kbps, Compatible with PLC	MBUS x 1, 115.2 Kbps, Compatible with PLC
RS485	COM x 3, 1,200 / 2,400 / 4,800 / 9,600 / 19,200 / 115,200 bps	COM x 6, 1,200 / 2,400 / 4,800 / 9,600 / 19,200 / 115,200 bps
Digital Analog Input / Output	DI x 4, DO x 2, AI x 4	DI x 8, DO x 2, AI x 2
PT100 / PT1000	0	2
Active DC	12 V, 100 mA (connection with relay, sensor)	
Communication Protocol		
Modbus	Modbus-RTU, IEC 60870-5-103	Modbus-RTU, IEC 60870-5-103
RS485	Modbus-RTU, IEC 60870-5-103	Modbus-RTU, IEC 60870-5-103
Interaction		
LED	LED indicator x 3 - RUN, ALM, AG	LED indicator x 5 - RUN, ALM, AG, SmartLogger3000B) & 100% ALM (SmartModule1000A)
WEB	Embedded Web	Embedded Web
USB	USB 2.0 x 1	USB 2.0 x 1
APP	Communication by WLAN for commissioning	Communication by WLAN for commissioning
Environment		
Operating Temperature Range	-40°C ~ 60°C	-40°C ~ 60°C
Storage Temperature Range	-40°C ~ 70°C	-40°C ~ 70°C
Relative Humidity (Non-condensing)	5% ~ 95%	5% ~ 95%
Max. Operating Altitude	4000 m	4000 m
Electrical		
Power Adapter	AC input: 100 V ~ 240 V, 50 Hz / 60 Hz, DC output: 12 V, 2 A	AC input: 100 V ~ 240 V, 50 Hz / 60 Hz, DC output: 12 V, 2 A
DC Power Supply	Typical 0 W, Max. 15 W	Typical 10 W, Max. 18 W
Mechanical		
Dimensions (W x H x D, without mounting ears)	225 x 160 x 44 mm	350 x 160 x 44 mm
Weight	2 kg	3 kg
Protection Degree	IP20	IP20
Installation Options	Wall Mounting, DIN Rail Mounting, Tablet Mounting	Wall Mounting, DIN Rail Mounting, Tablet Mounting

PROGETTO DELL'IMPIANTO AGRIVOLTAICO E DELLE RELATIVE OPERE DI CONNESSIONE DA REALIZZARE NEL COMUNE DI MARTIS e CHIARAMONTI (SS) CON POTENZA IN IMMISSIONE PARI A 39.2MW. DENOMINAZIONE IMPIANTO "19185 - MARTIS"

PROPOSTA
LUCE MARTIS S.R.L.
Via N. Saraco, 22
42017 Novellara (RE)

PROGETTISTA
P.I. Luca Cattellani
Colegio Periti RE n. 1101

PROGETTAZIONE DELL'IMPIANTO
P.I. Luca Cattellani
Colegio Periti RE n. 1101

PROCEDURA DI VALUTAZIONE IMPATTO AMBIENTALE ai sensi dell'art. 23 del D.Lgs 152 / 2006 e ss. mm. ii.

Autorità competente
Ministero dell'Ambiente e della Sicurezza Energetica

Tabella revisioni	Tabella N°
03	
02	
01	
00	
REV. DATA	PRIMA EMISSIONE DESCRIZIONE FIORI F. CASACCIO S. REDATTO CONTROLLO

Fase di Progetto **Elaborato** **Tabella N°**

DEFINITIVO **LAYOUT CANALIZZAZIONI SPECIALI** **PDD12_T3**

File **00_Layout_Quadri_Campo_Canalizzazioni_Speciali_A0_T3** **Scala** **1:2000**