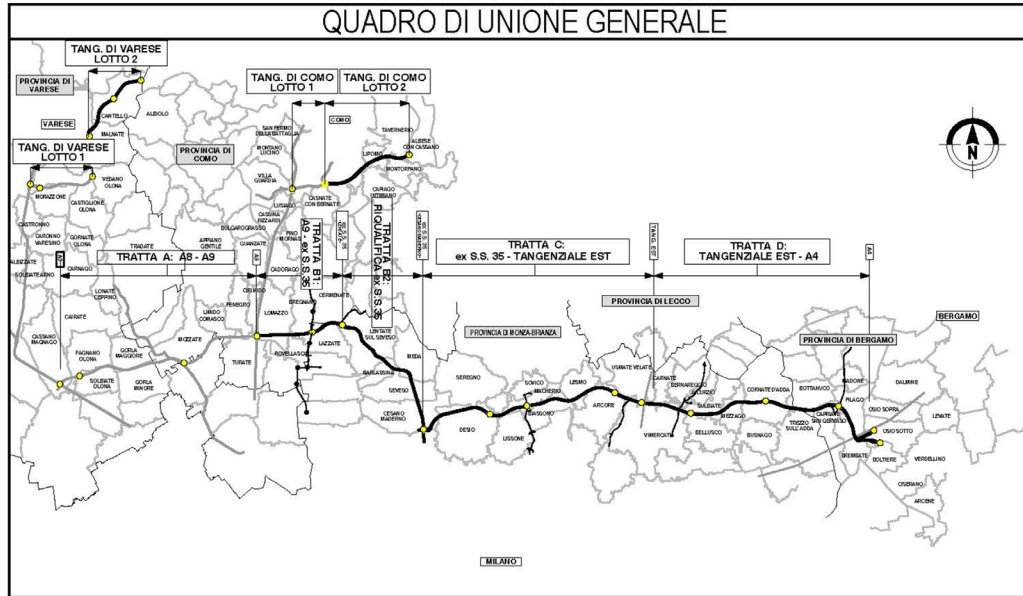


QUADRO DI UNIONE GENERALE



COLLEGAMENTO AUTOSTRADALE DALMINE-COMO-VARESE-VALICO DEL GAGGIOLO E OPERE AD ESSO CONNESSE

CODICE C.U.P. F11B0600270007

PROGETTO ESECUTIVO GENERALE DI PROGETTO FASCICOLO DELLE TIPOLOGIE DI MITIGAZIONE DELLE OPERE STRADALI

IDENTIFICAZIONE ELABORATO

FASE PROGETTUALE	AMBITO	TRATTA	CATEGORIA	OPERA	PARTI DI OPERA	TIPO ELABORATO	PROGRESSIVA	REVISIONE ESTERNA
E	AM	CC	000	AT00	120	FA	003	A

DATA Giugno 2023
SCALA

CONCEDENTE



CONTRAENTE GENERALE

PEDELOMBARDA NUOVA S.c.p.A.

DATA REVISIONE

18 Aprile 2023	Bozza	A01
Giugno 2023	Emissione	A02

ELABORAZIONE PROGETTUALE

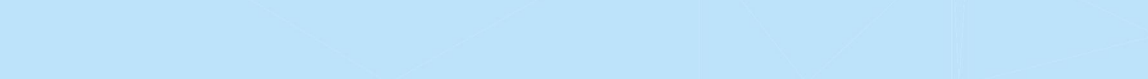
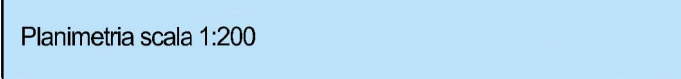
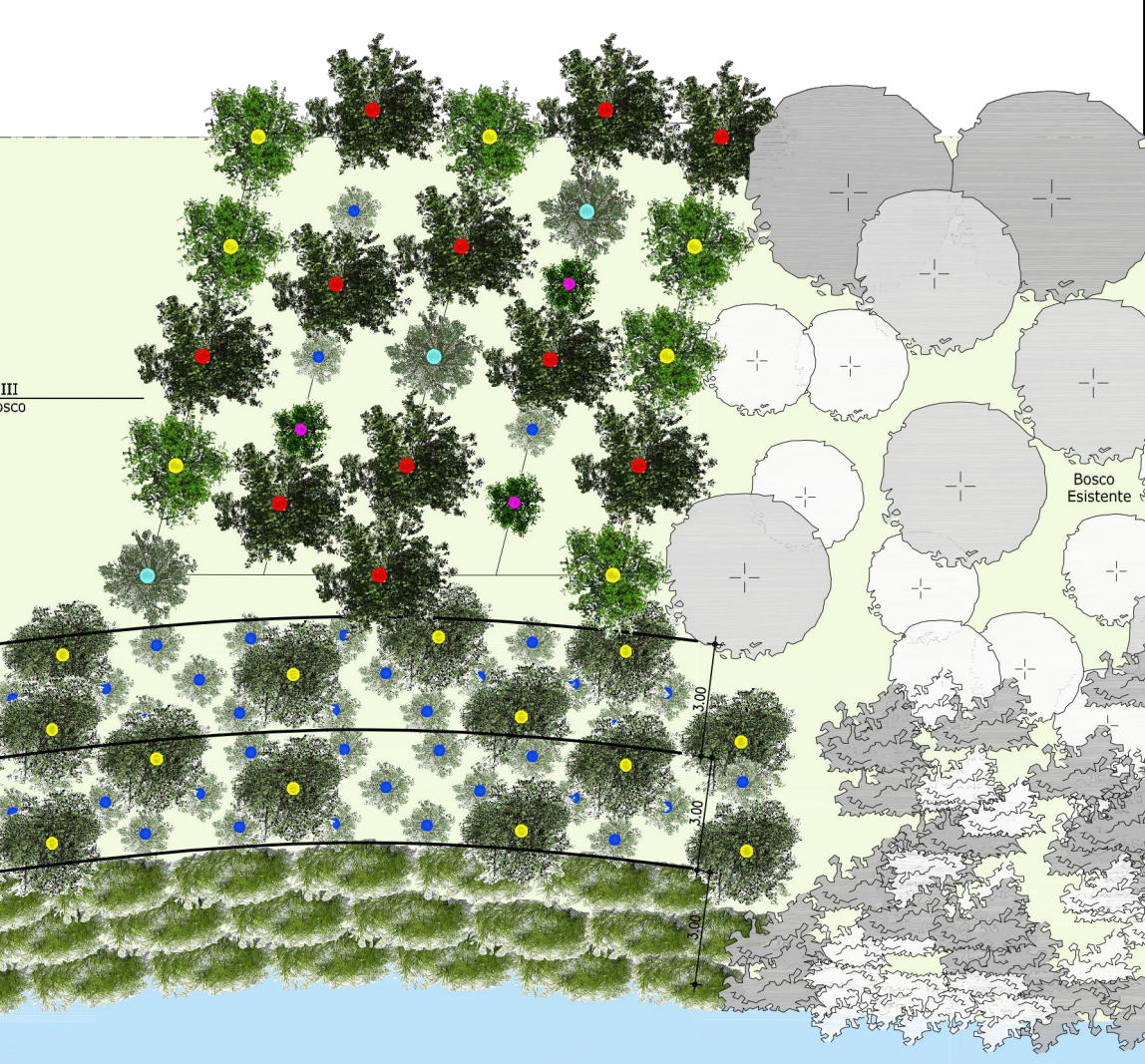
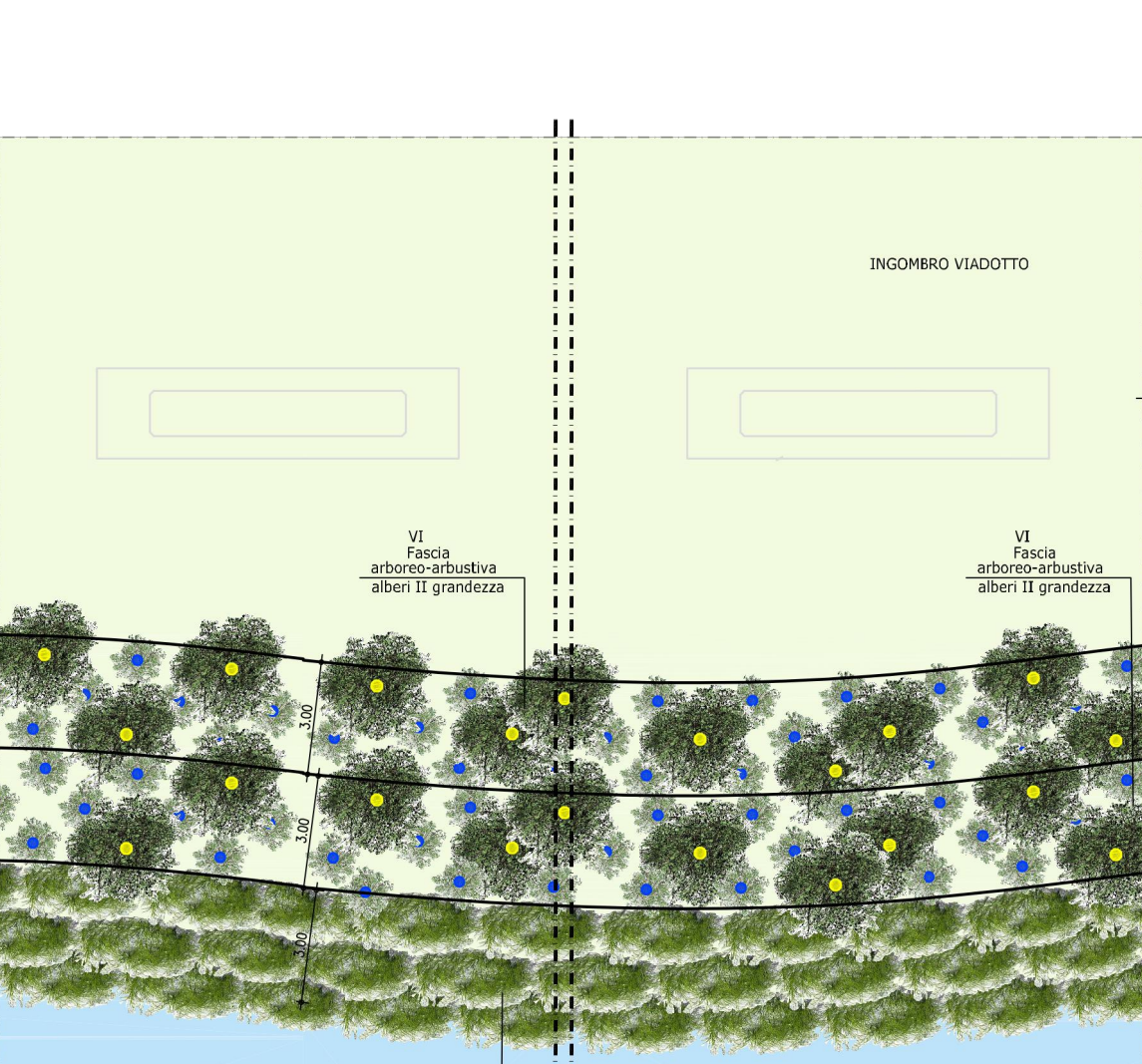
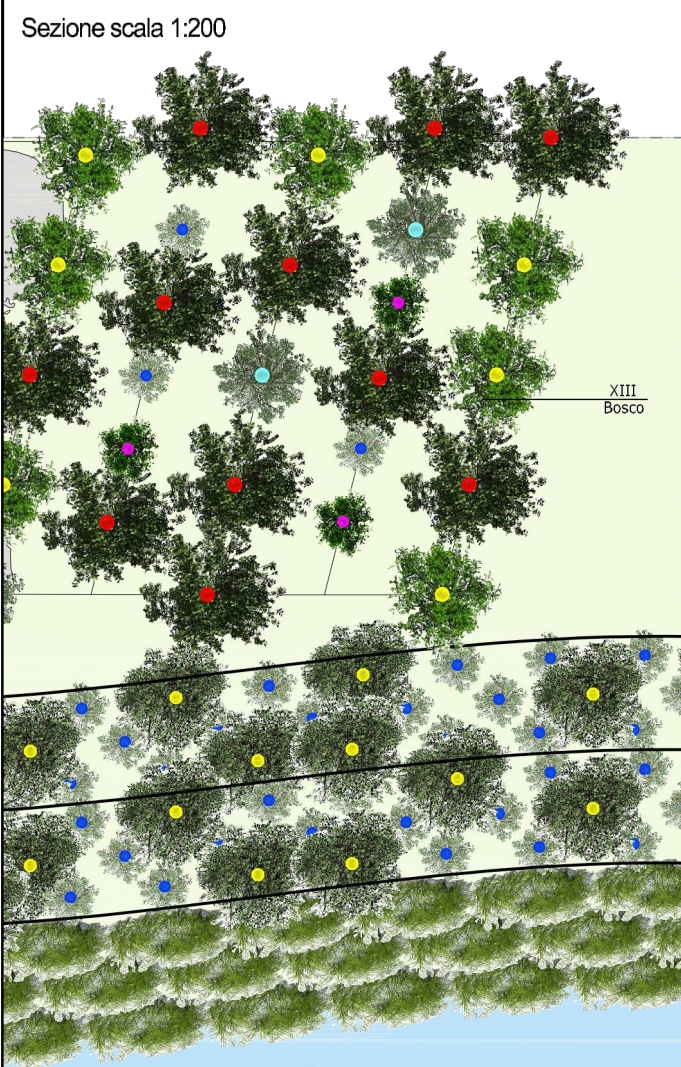
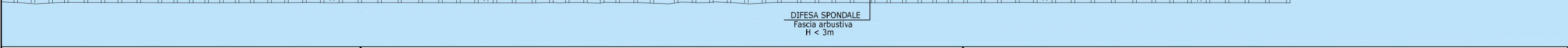
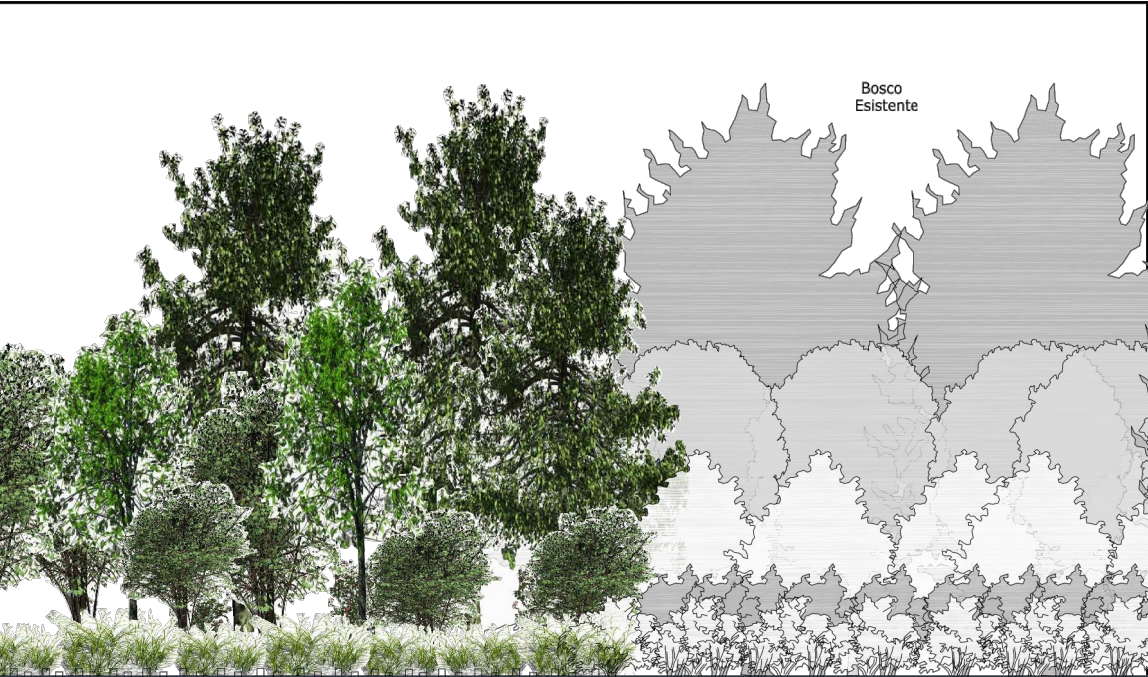
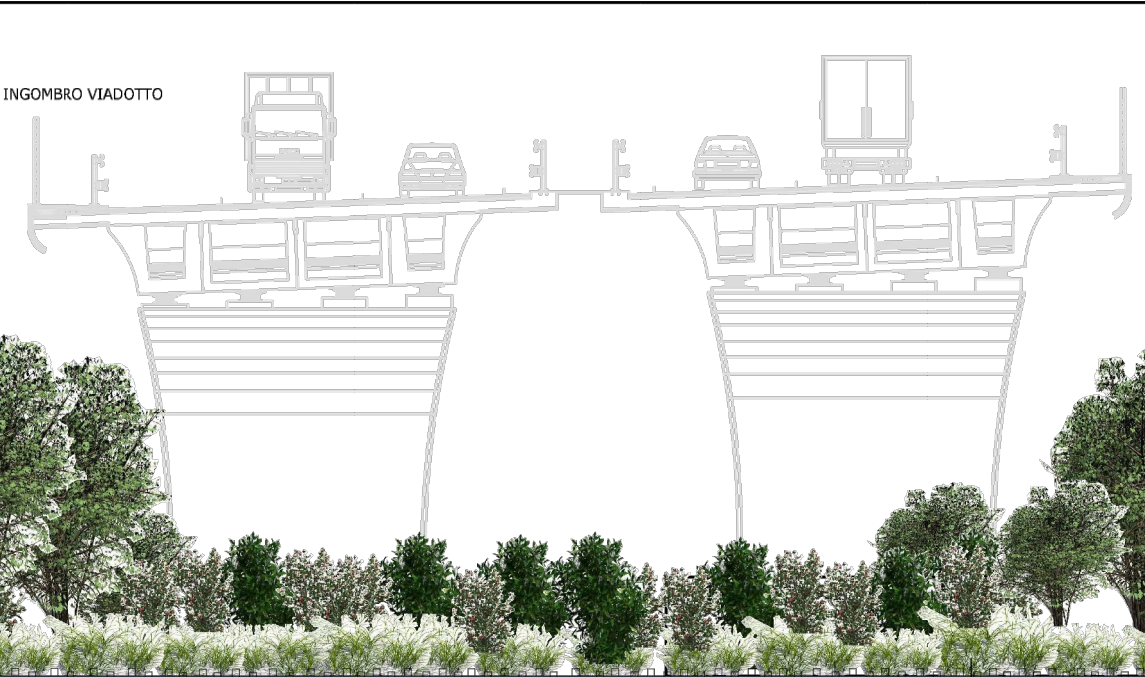
PROGETTISTI Proger s.p.a.	RESPONSABILE INTEGRAZIONE PRESTAZIONI SPECIALISTICHE Ing. Carlo Lisotti
PROGER	
Redatto Arch. A. Kipar	Verificato Ing. M. Larosa
	Approvato Ing. M. Sandrucci

CONCESSIONARIO



PROGETTISTA



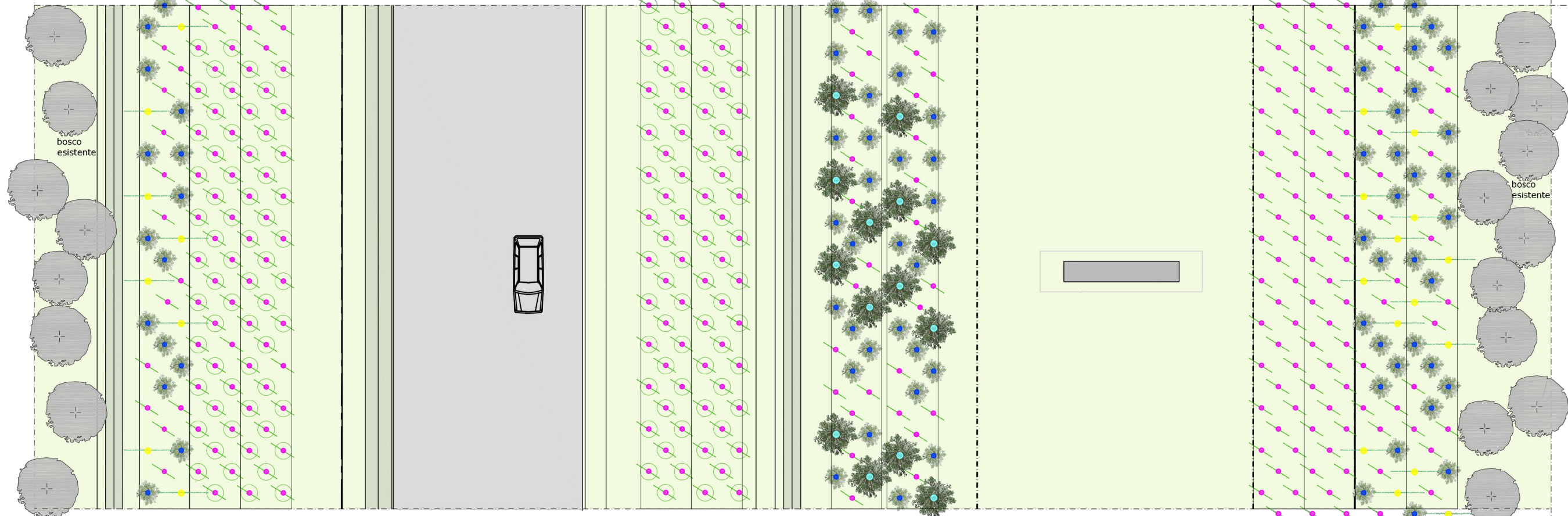


VIADOTTO: RIFORESTAZIONE SU COMPLANARE A MEZZA COSTA
scala 1:250



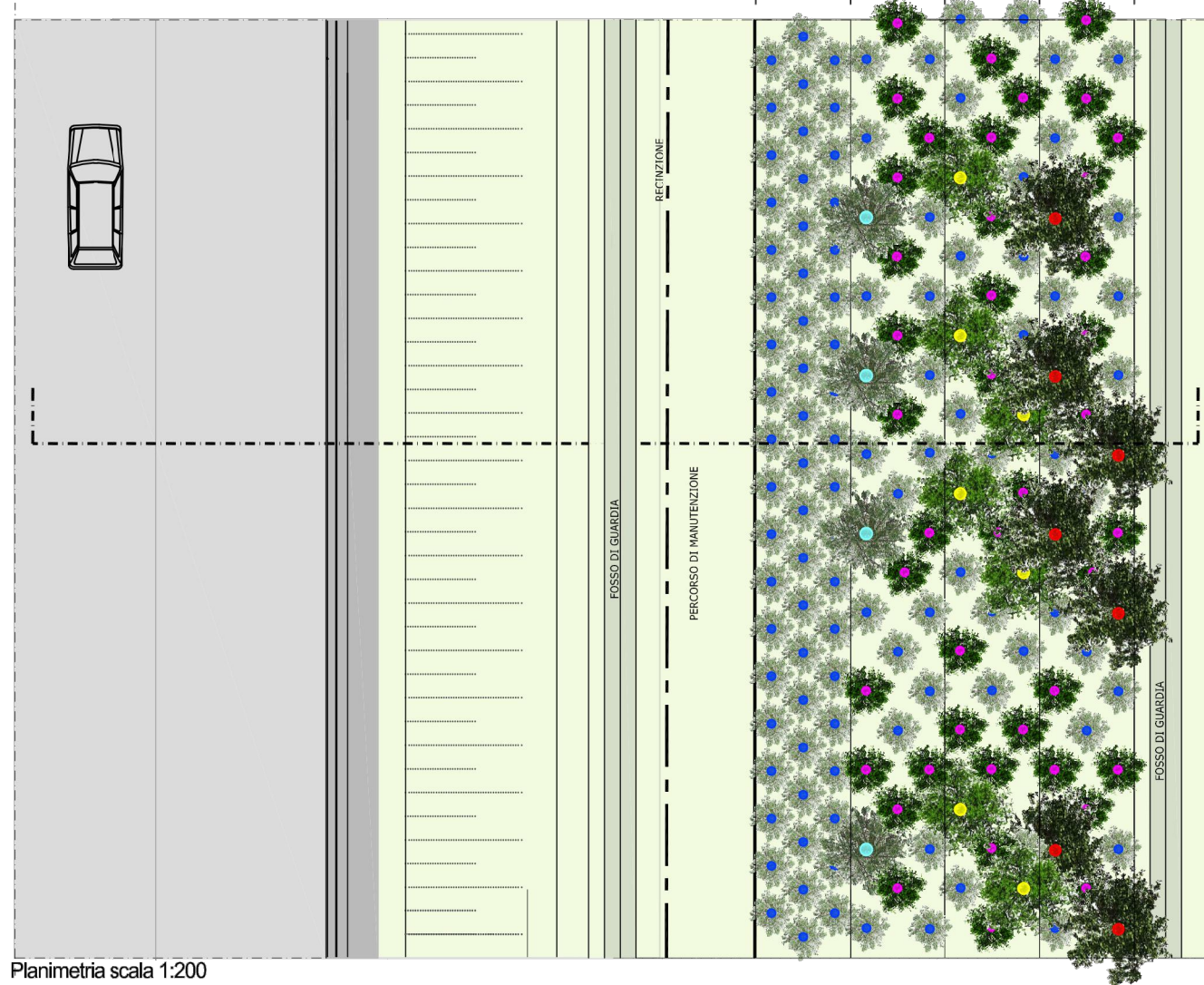
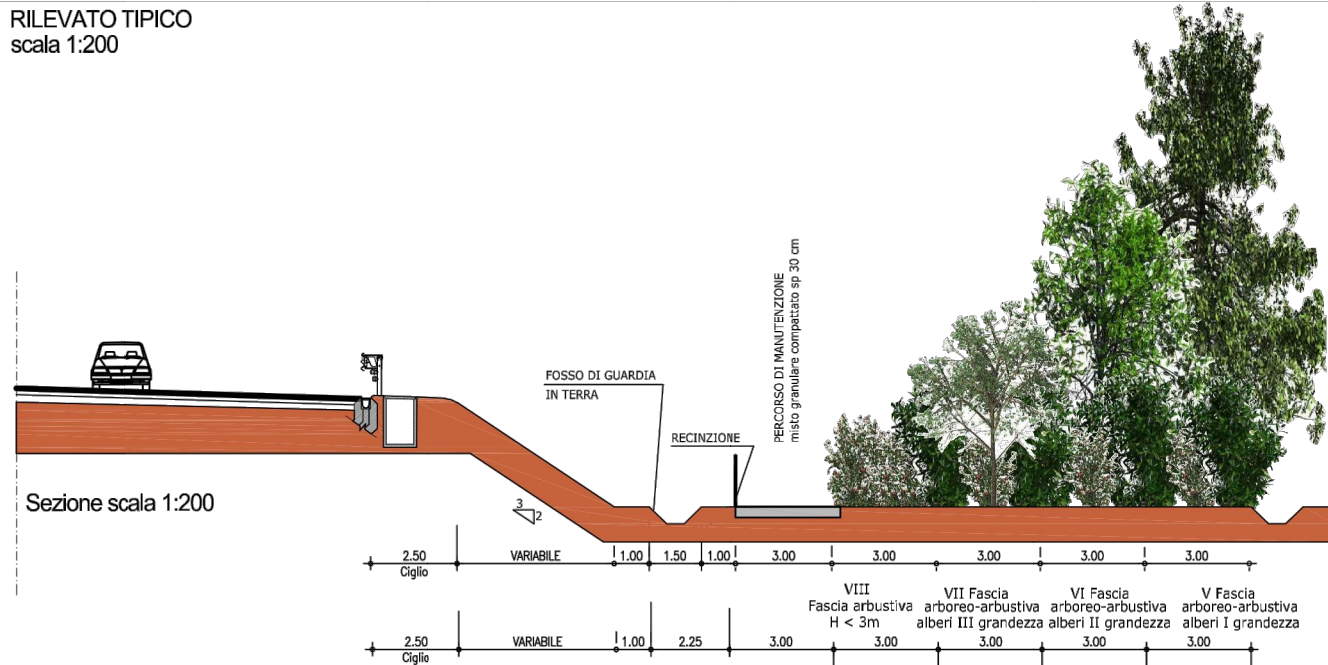
Sezione scala 1:250

VI Fascia arboreo-arbustiva alberi II grandezza 3.00
 IX Fascia arbustiva H>3 m 3.00
 IX Fascia arbustiva H>3 m 3.00
 2.50
 IX Fascia arbustiva H>3 m 3.00
 IX Fascia arbustiva H>3 m 3.00
 VII Fascia arboreo-arbustiva alberi III grandezza 3.00
 VII Fascia arboreo-arbustiva alberi III grandezza 3.00
 IX Fascia arbustiva H>3 m 3.00
 IX Fascia arbustiva H>3 m 3.00
 VI Fascia arboreo-arbustiva alberi II grandezza 3.00
 VI Fascia arboreo-arbustiva alberi II grandezza 3.00

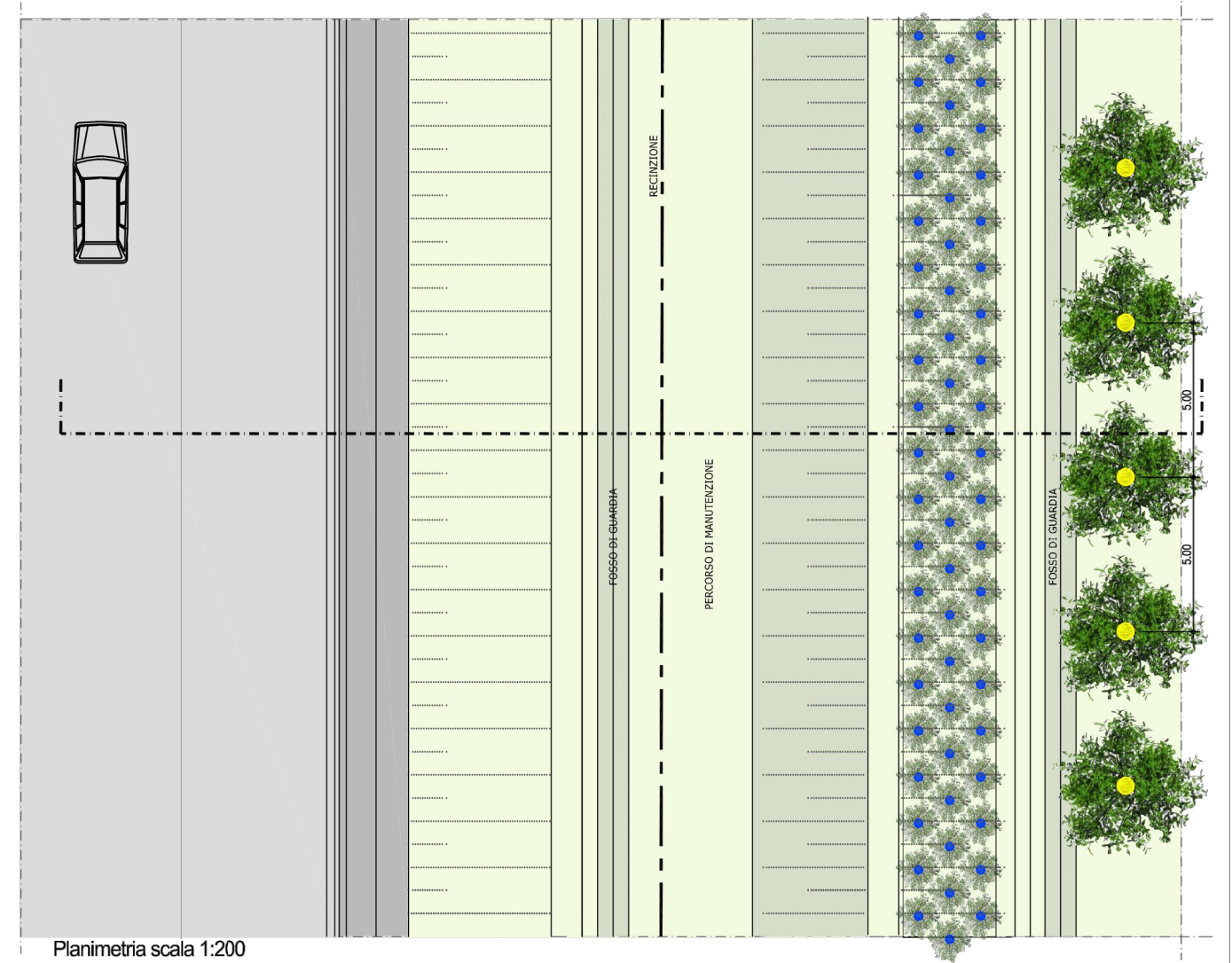
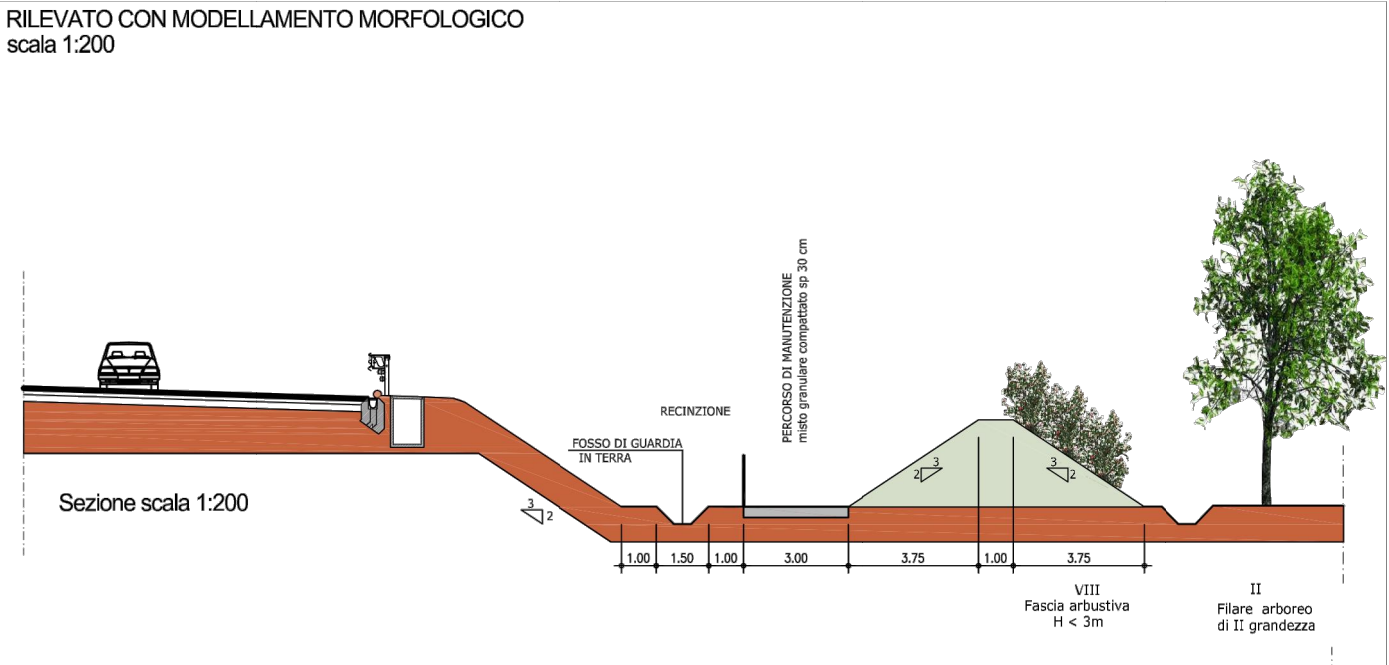


Planimetria scala 1:250

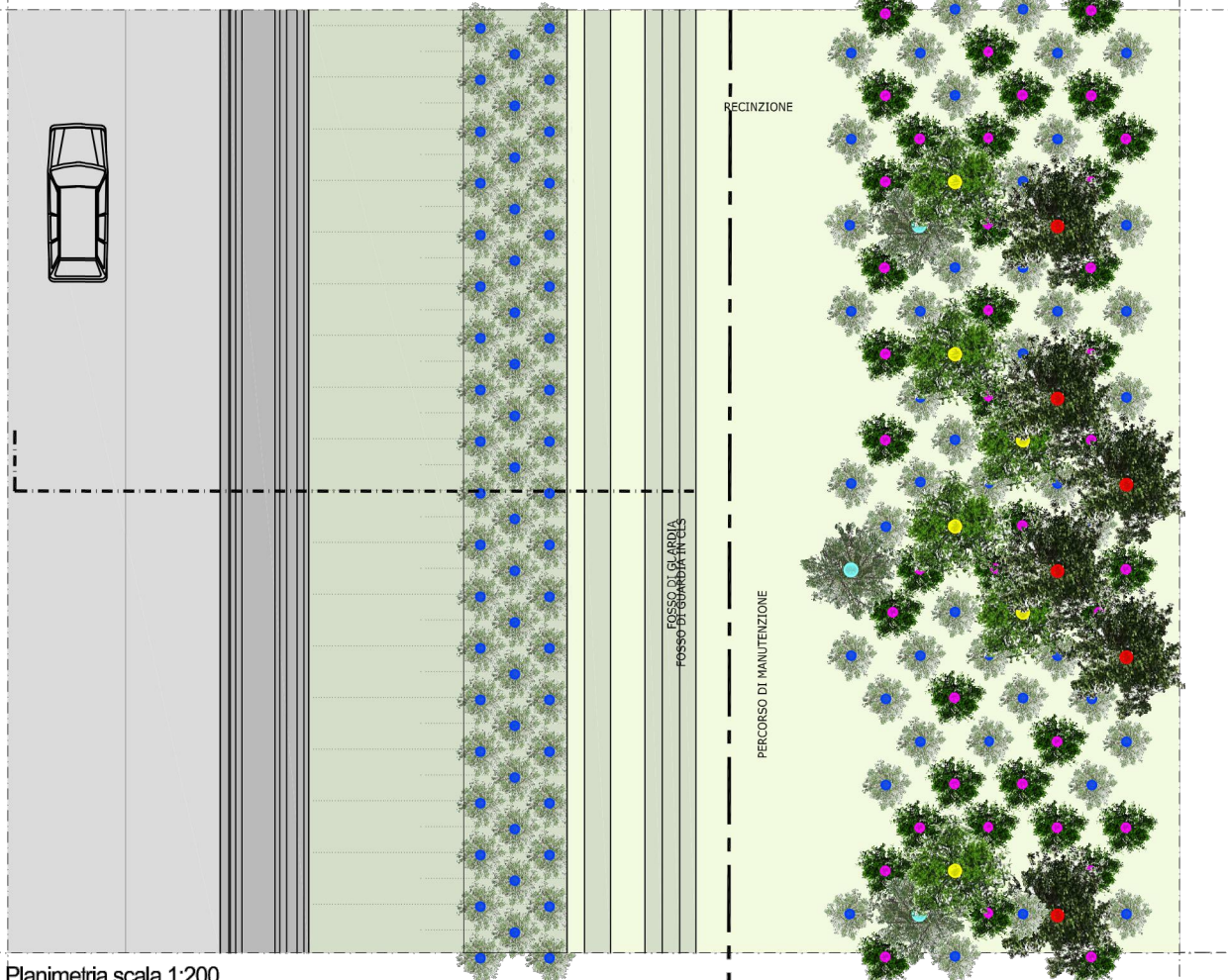
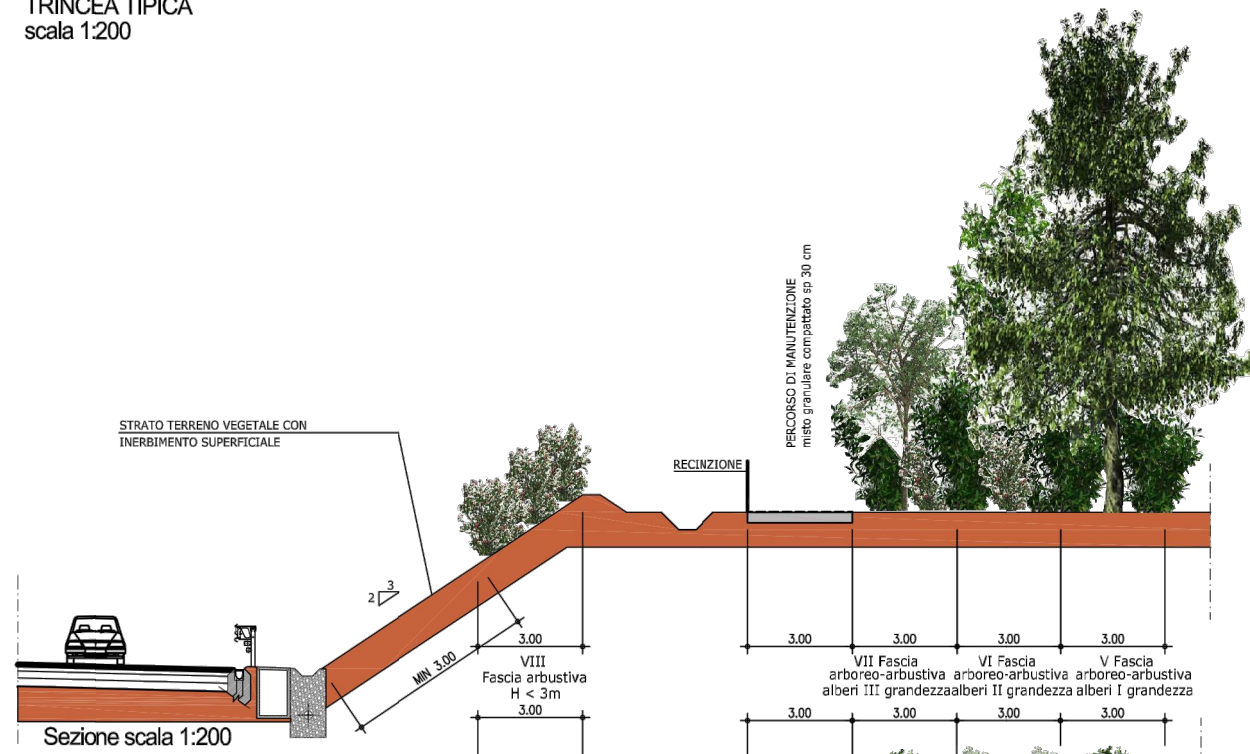
RILEVATO TIPICO
scala 1:200



RILEVATO CON MODELLAMENTO MORFOLOGICO
scala 1:200

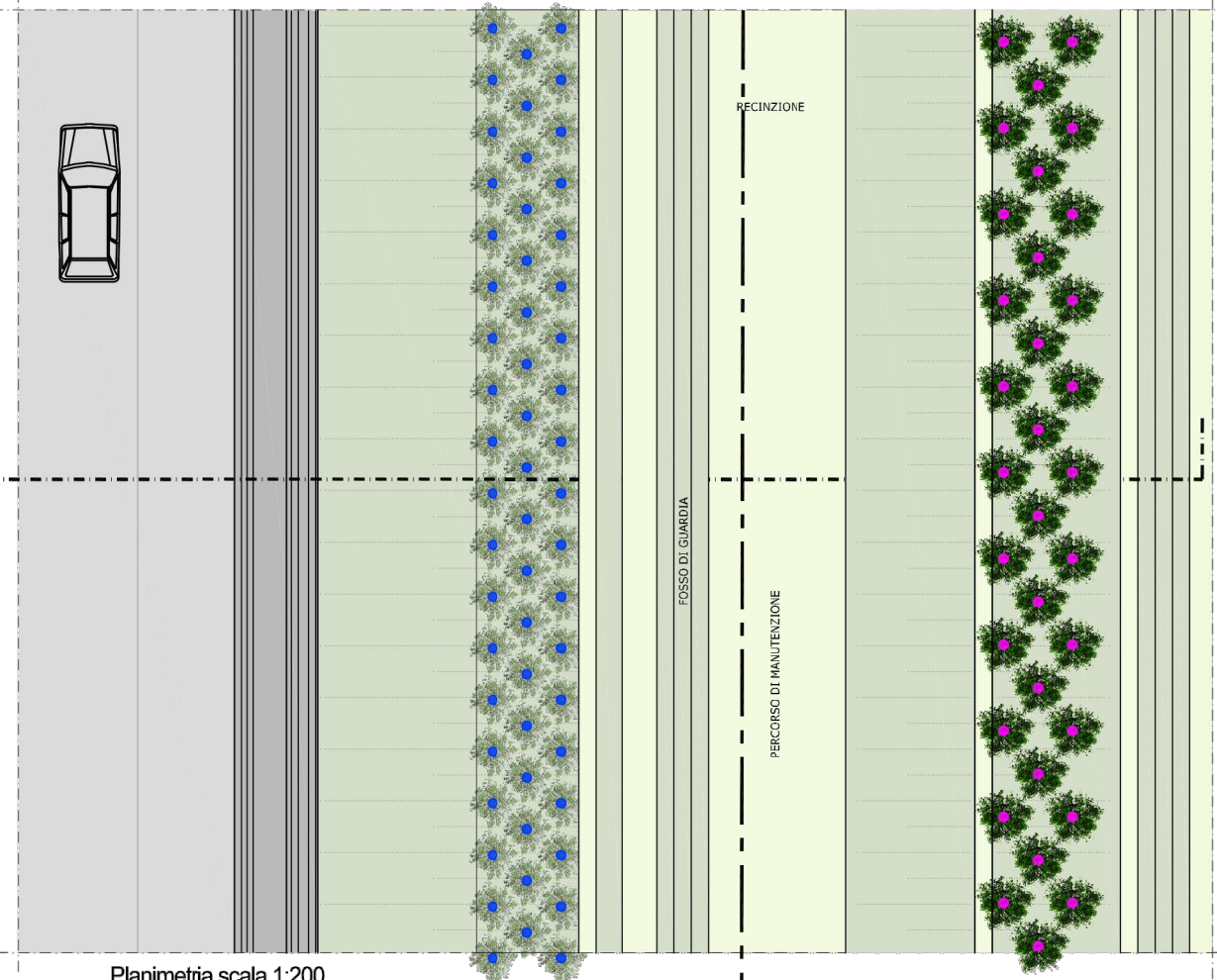
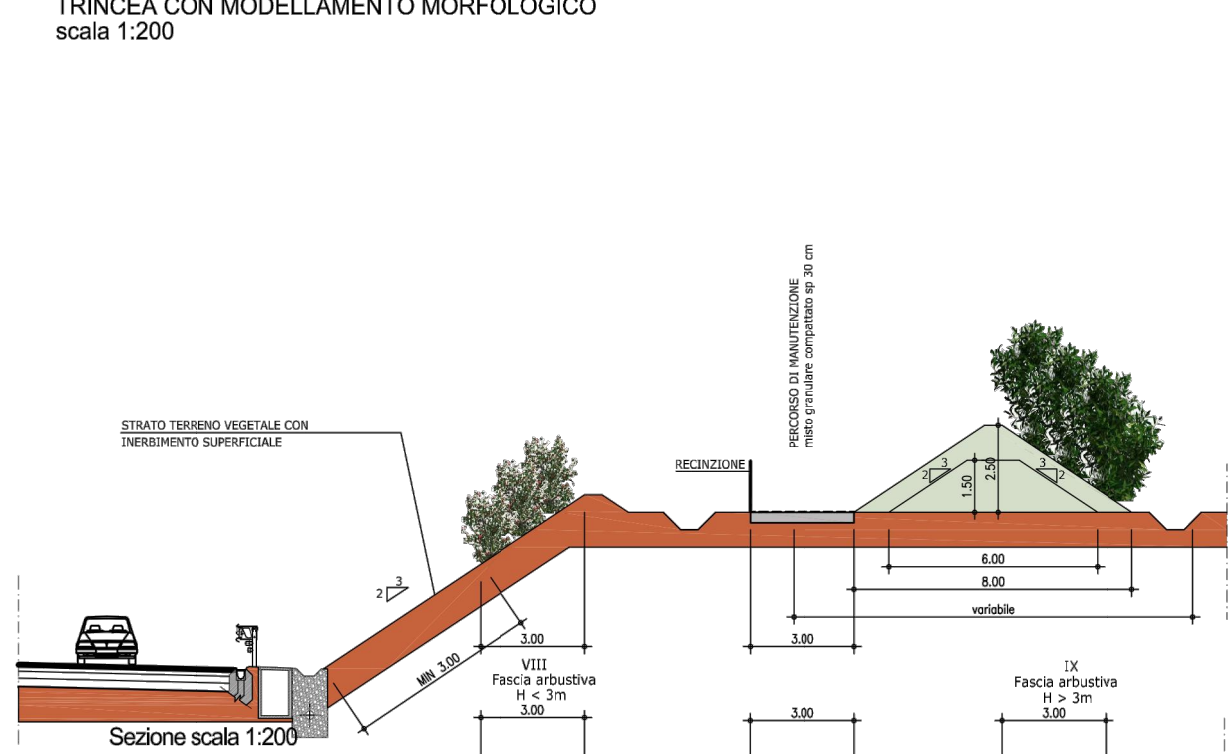


TRINCEA TIPICA
scala 1:200



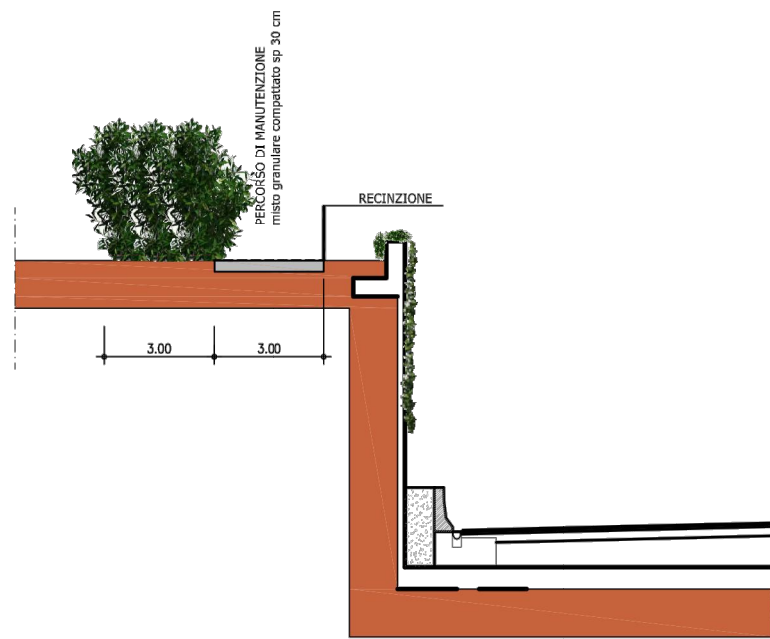
Planimetria scala 1:200

TRINCEA CON MODELLAMENTO MORFOLOGICO
scala 1:200

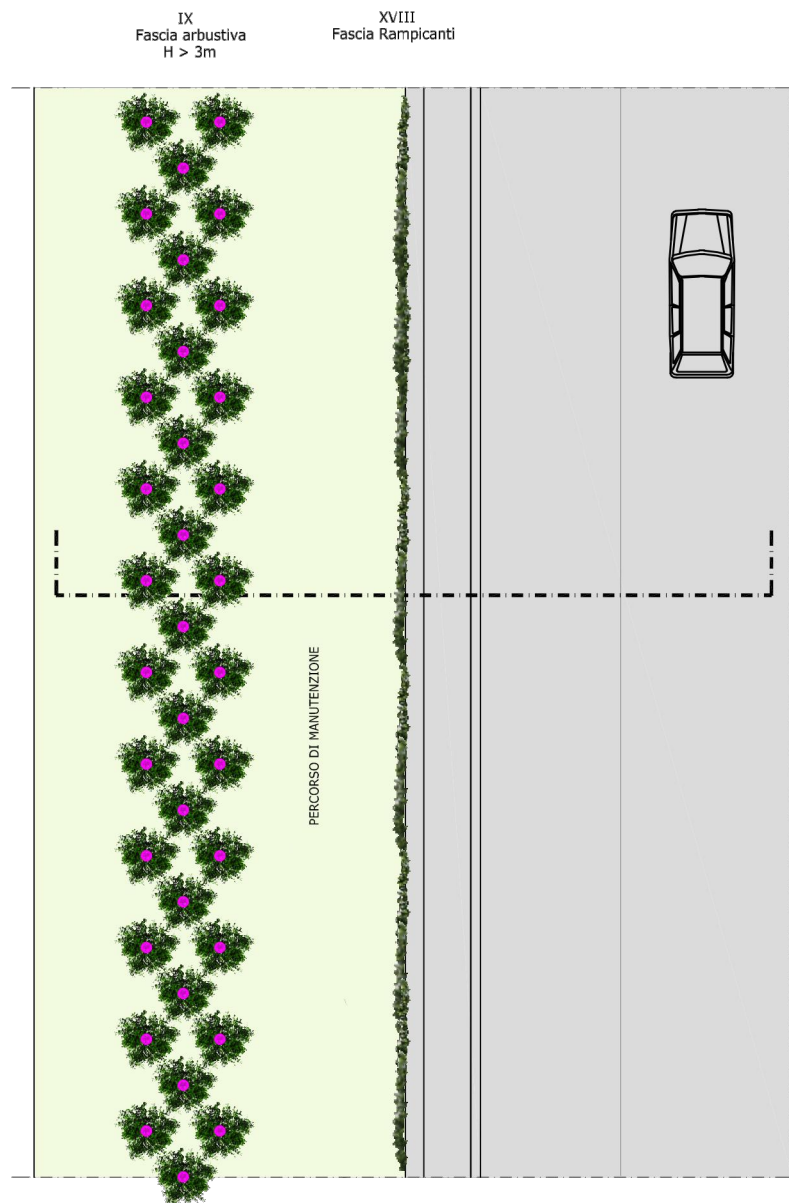


Planimetria scala 1:200

TRINCEA TRA MURI TIPICA
scala 1:200

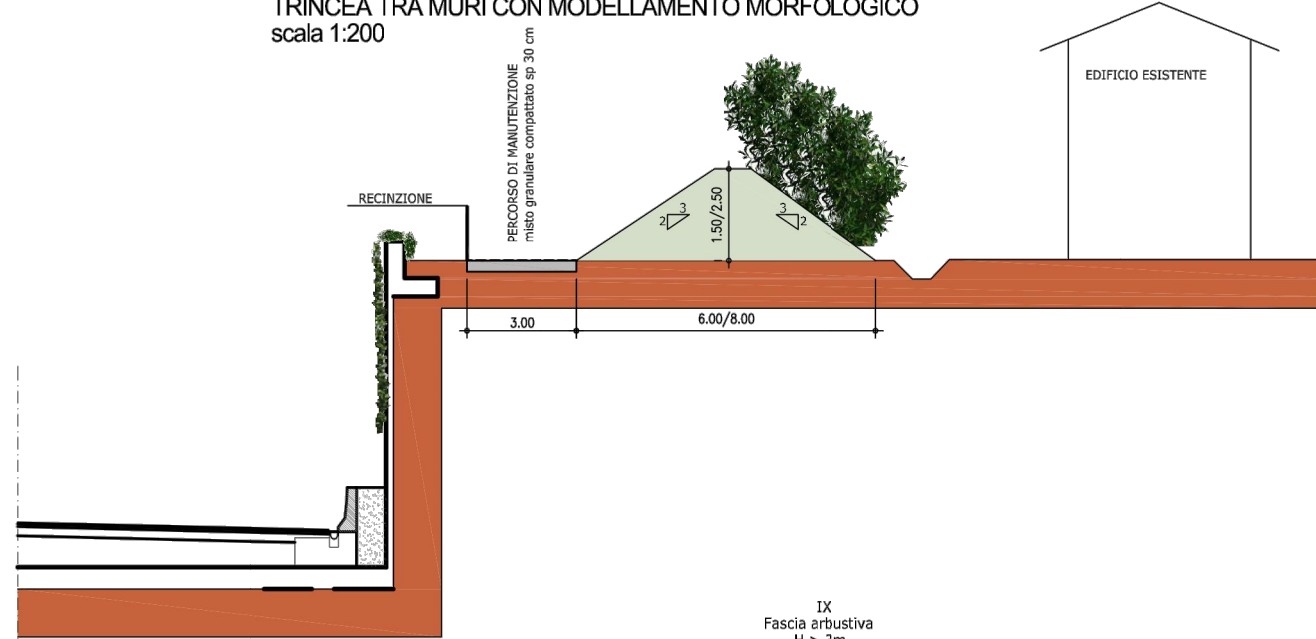


Sezione scala 1:200

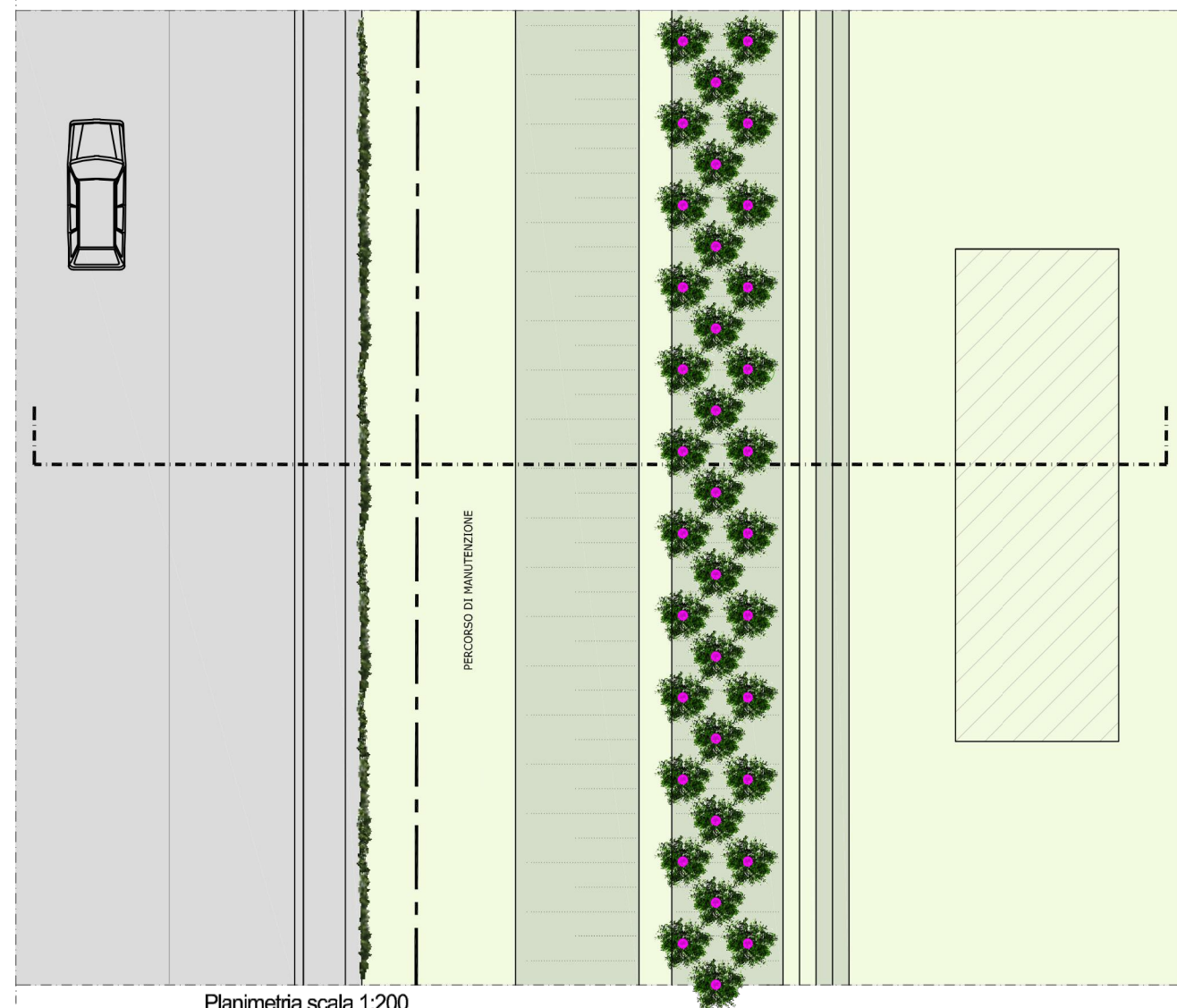


Planimetria scala 1:200

TRINCEA TRA MURI CON MODELLAMENTO MORFOLOGICO
scala 1:200



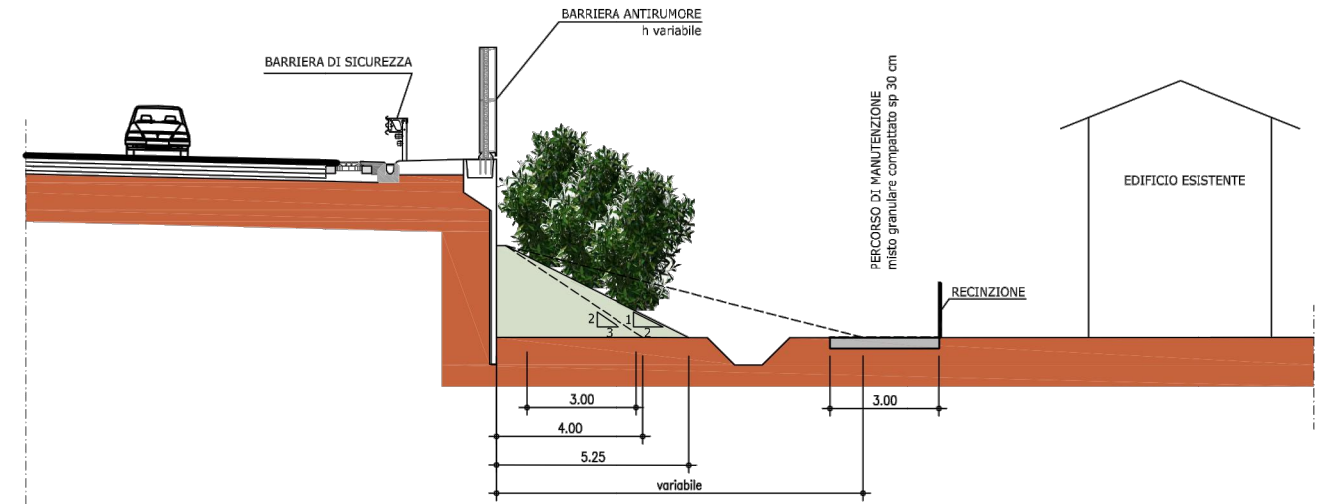
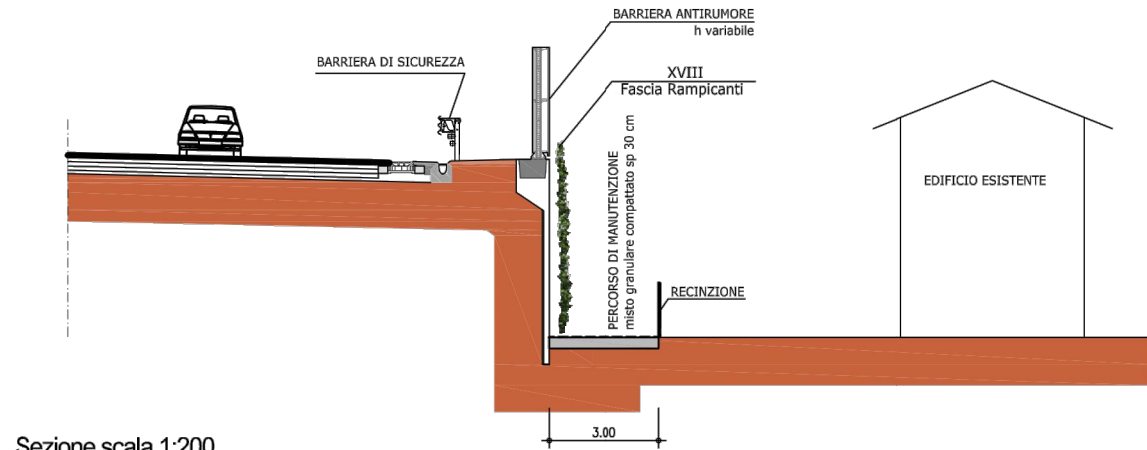
Sezione scala 1:200



Planimetria scala 1:200

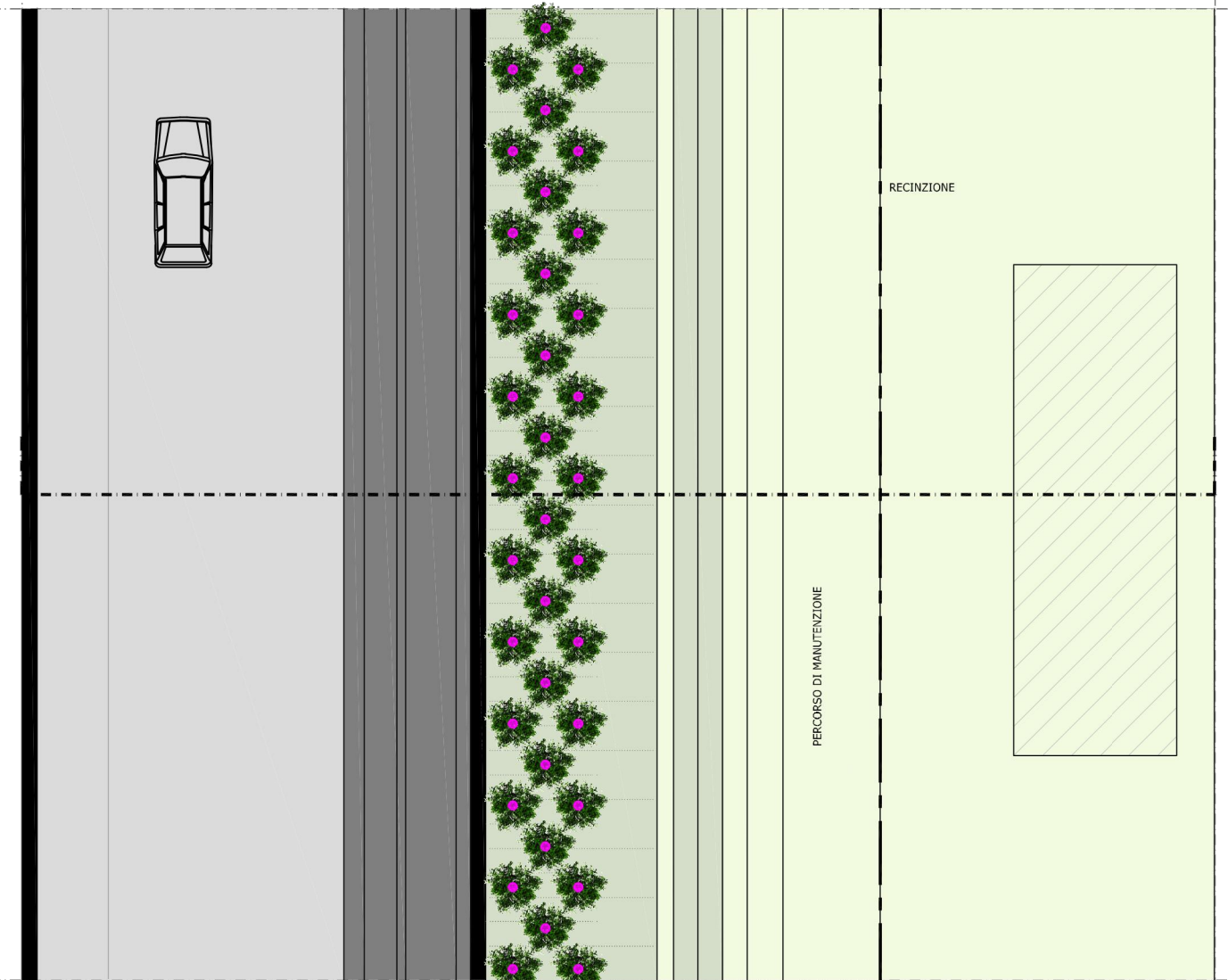
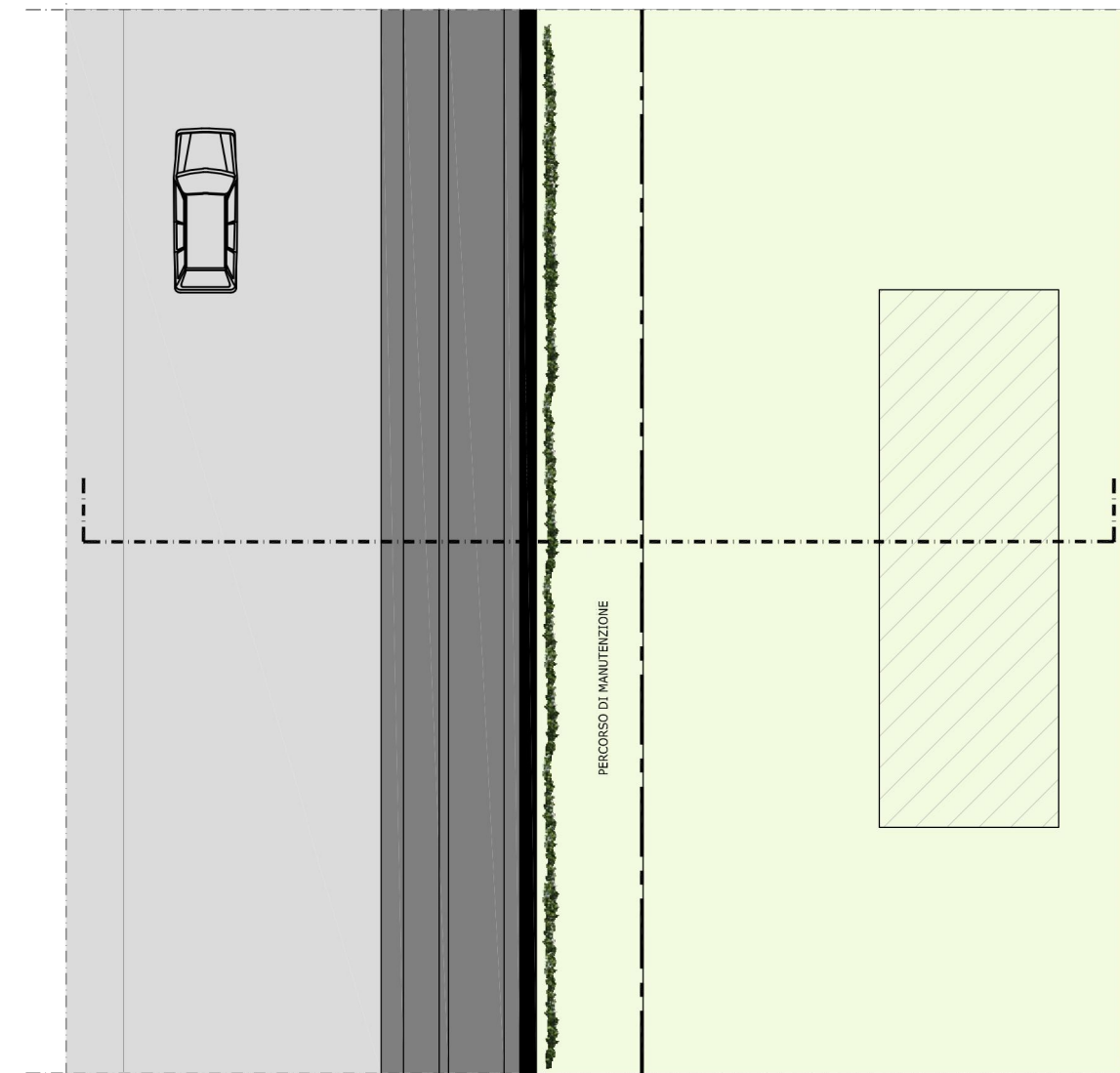
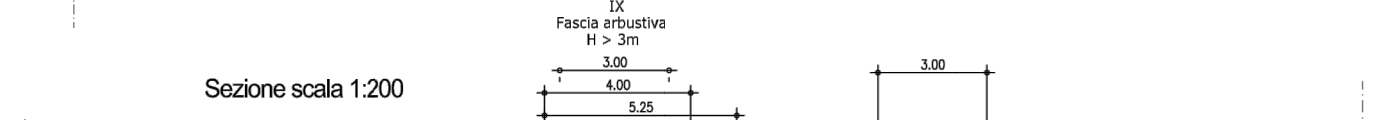
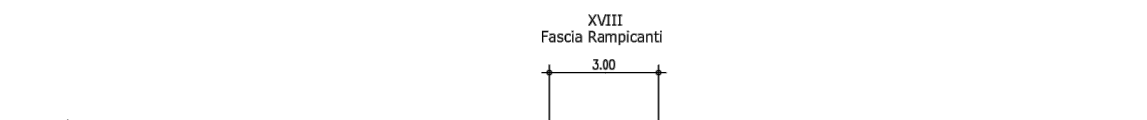
RILEVATO SU MURI CON BARRIERA ANTIRUMORE TIPICO
scala 1:200

RILEVATO SU MURI CON BARRIERA ANTIRUMORE CON MODELLAMENTO
scala 1:200



Sezione scala 1:200

Sezione scala 1:200

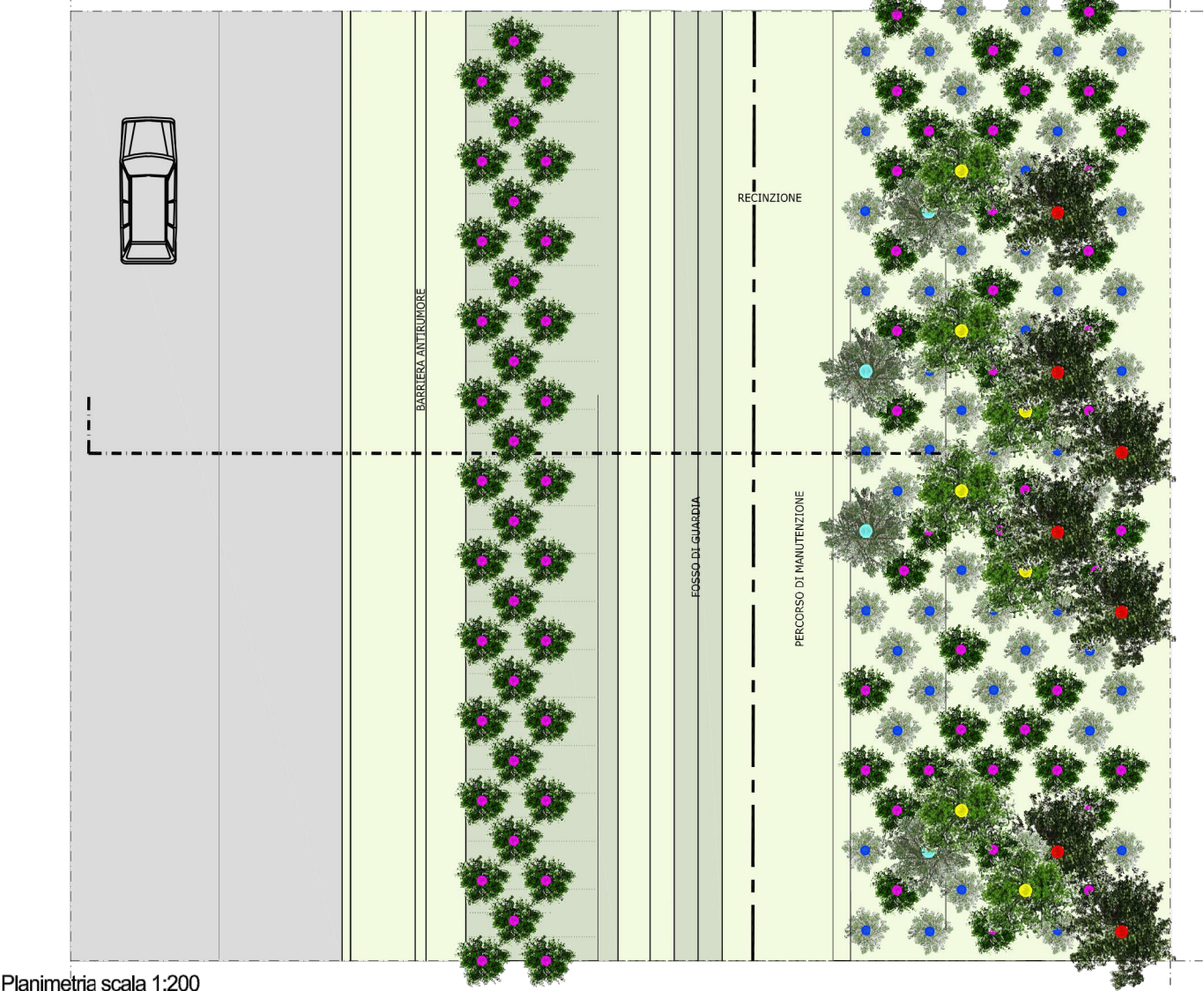
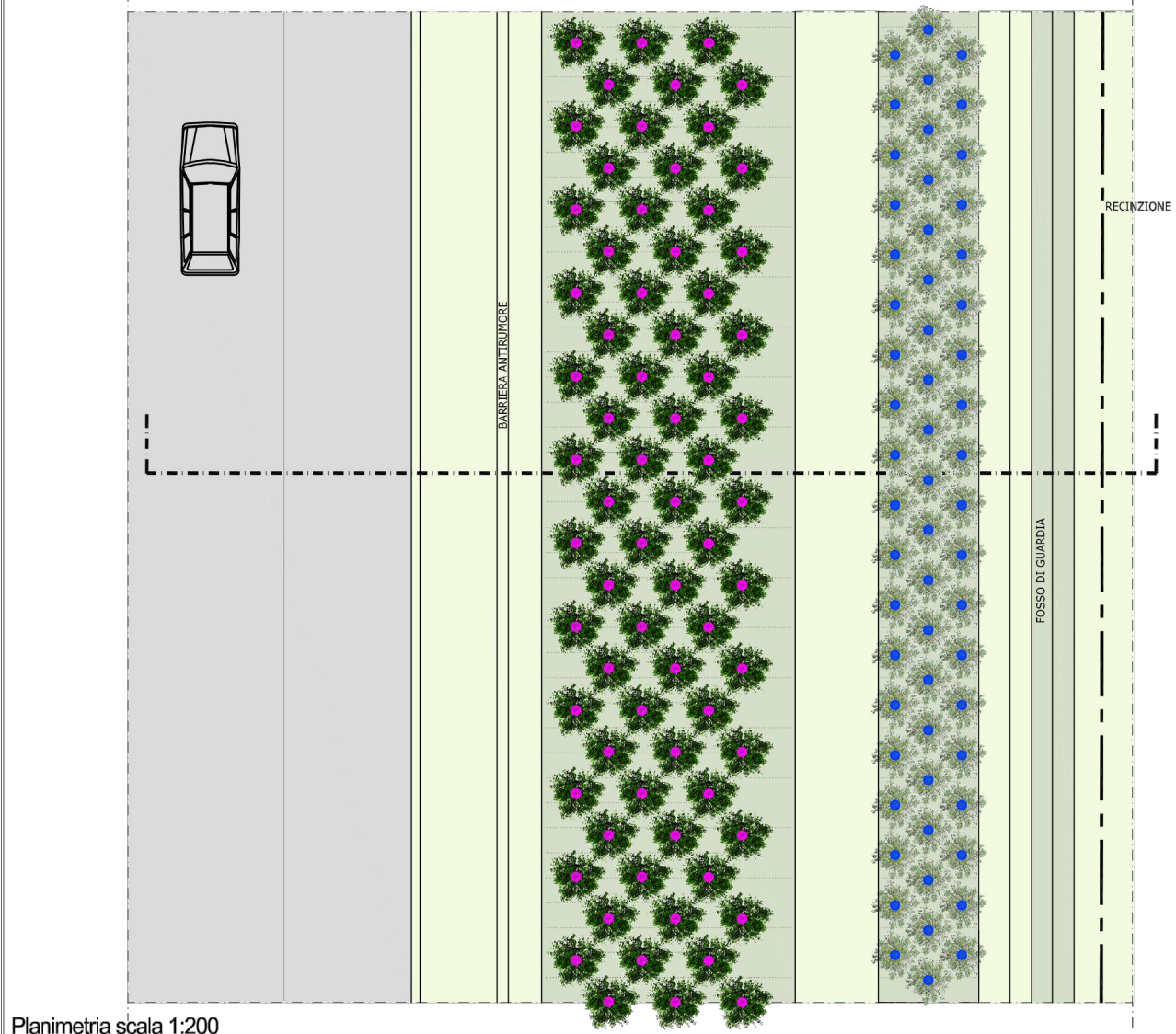
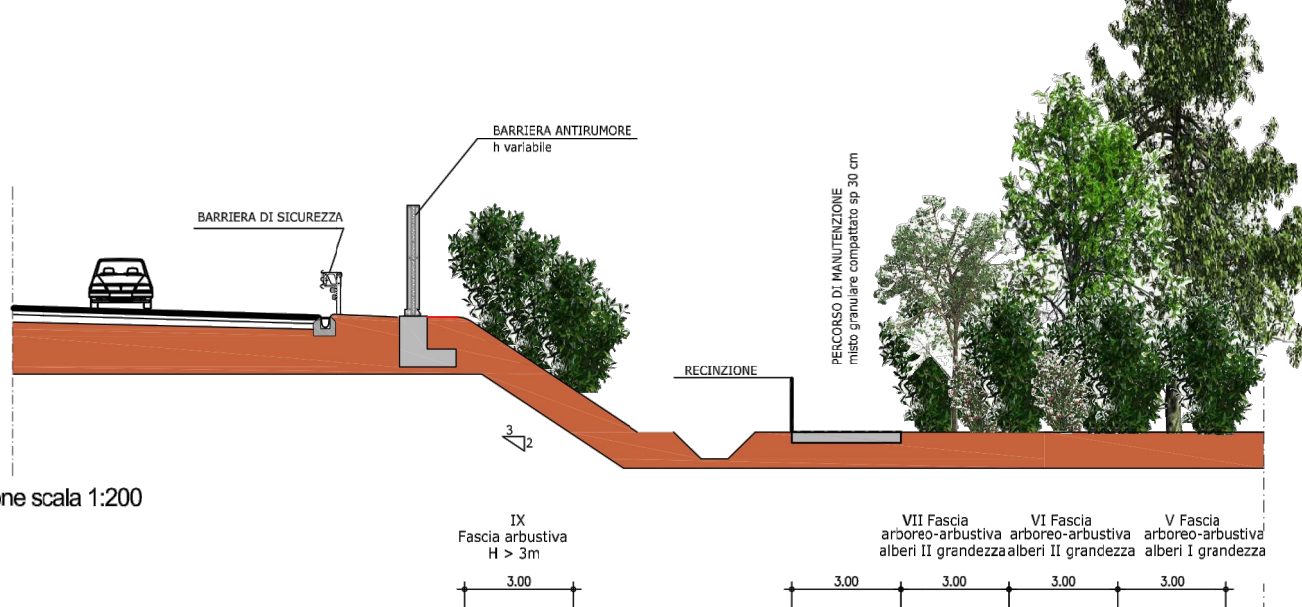
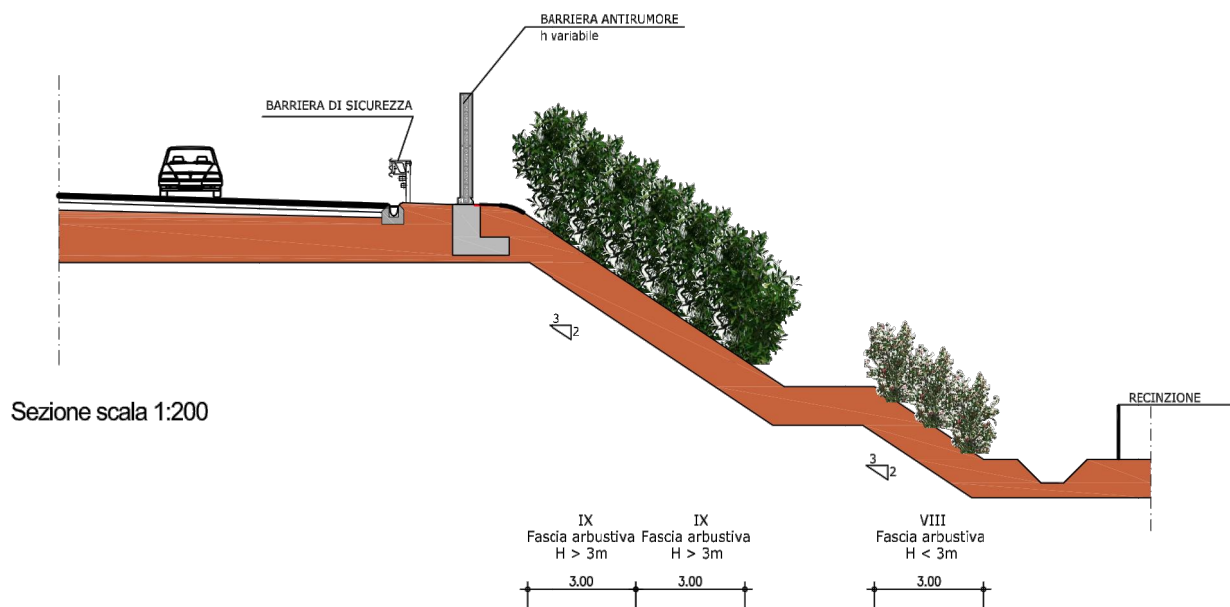


Planimetria scala 1:200

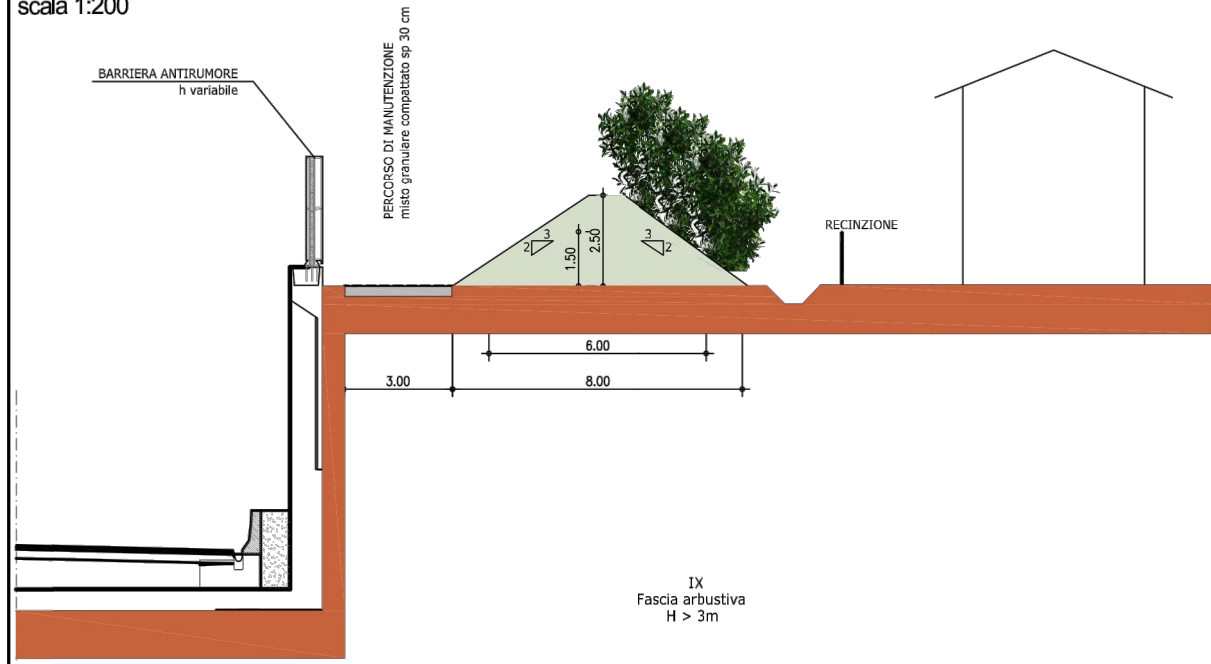
Planimetria scala 1:200

RILEVATO CON BARRIERA ANTIRUMORE
scala 1:200

RILEVATO CON BARRIERA ANTIRUMORE
scala 1:200

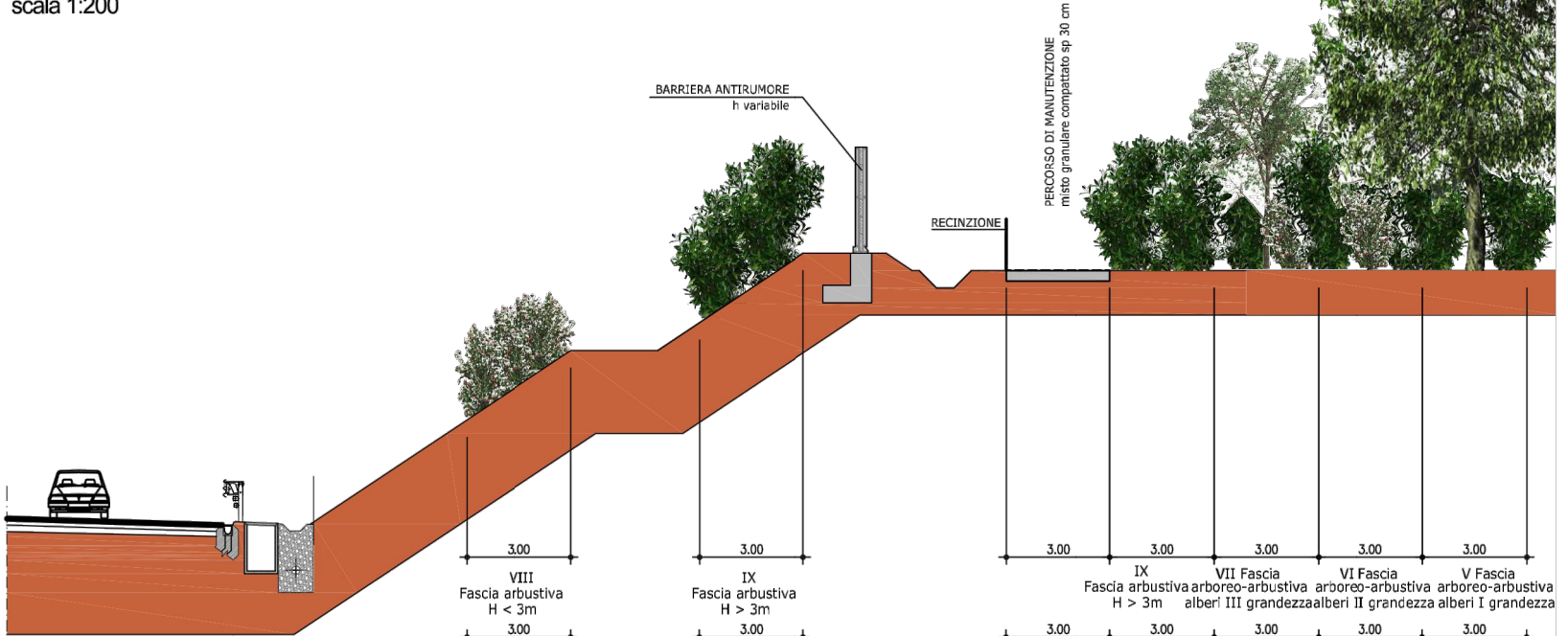


TRINCEA TRA MURI CON BARRIERA ANTIRUMORE
scala 1:200

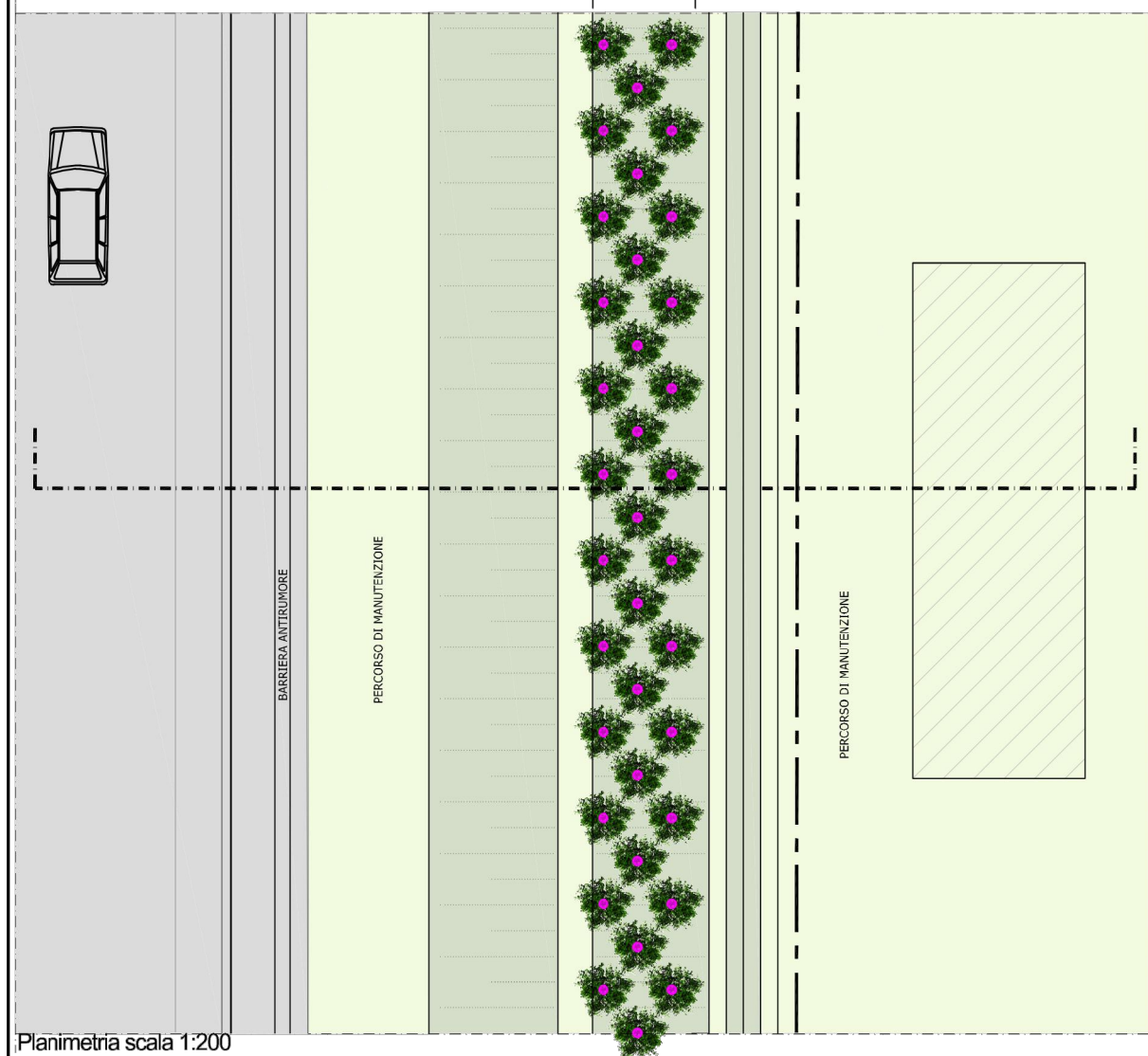


Sezione scala 1:200

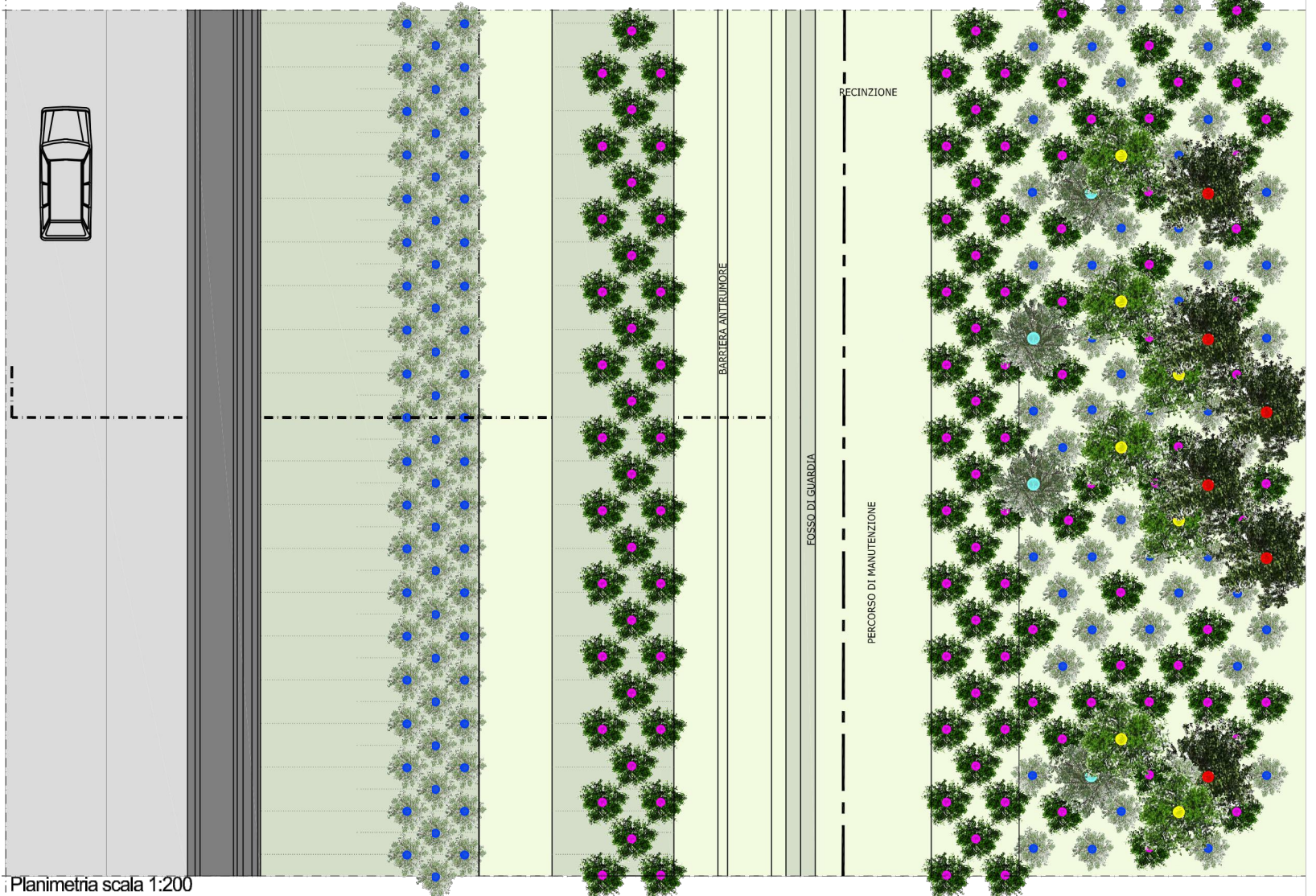
TRINCEA CON BARRIERA ANTIRUMORE
scala 1:200



Sezione scala 1:200



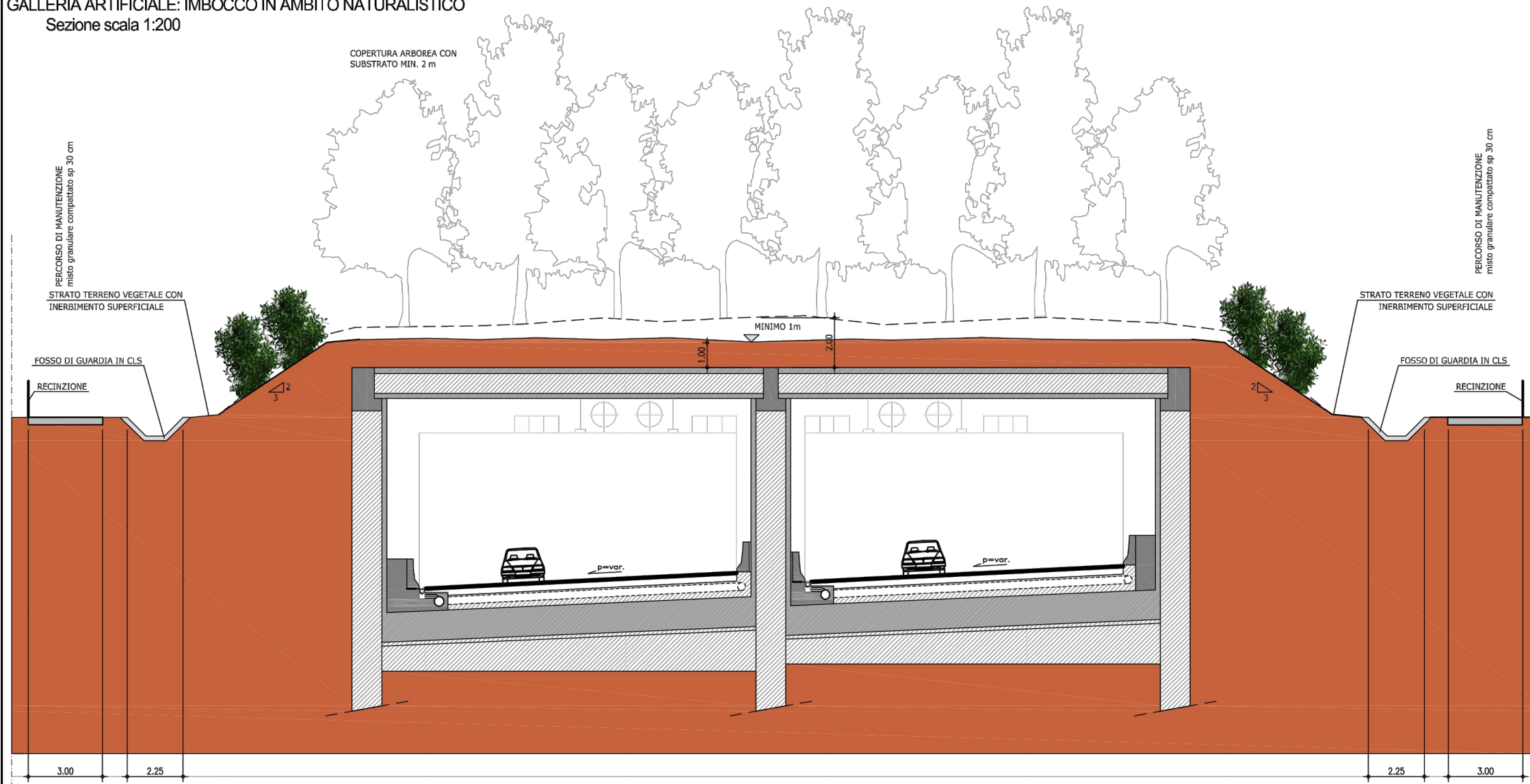
Planimetria scala 1:200



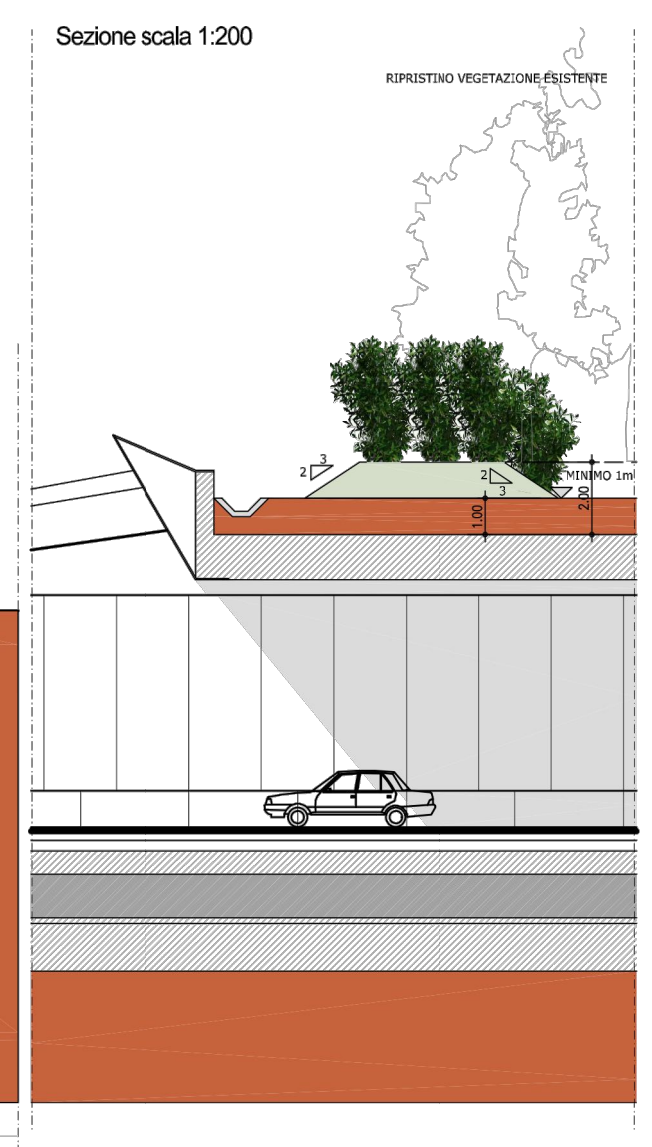
Planimetria scala 1:200

GALLERIA ARTIFICIALE: IMBOCCO IN AMBITO NATURALISTICO

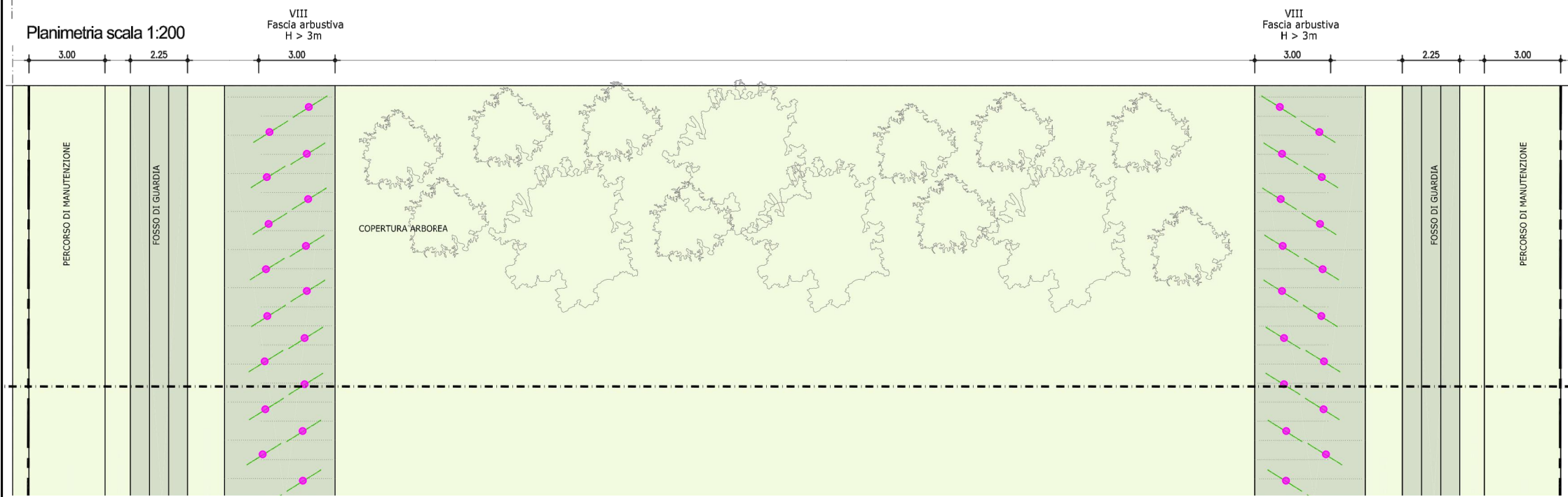
Sezione scala 1:200



Sezione scala 1:200



Planimetria scala 1:200

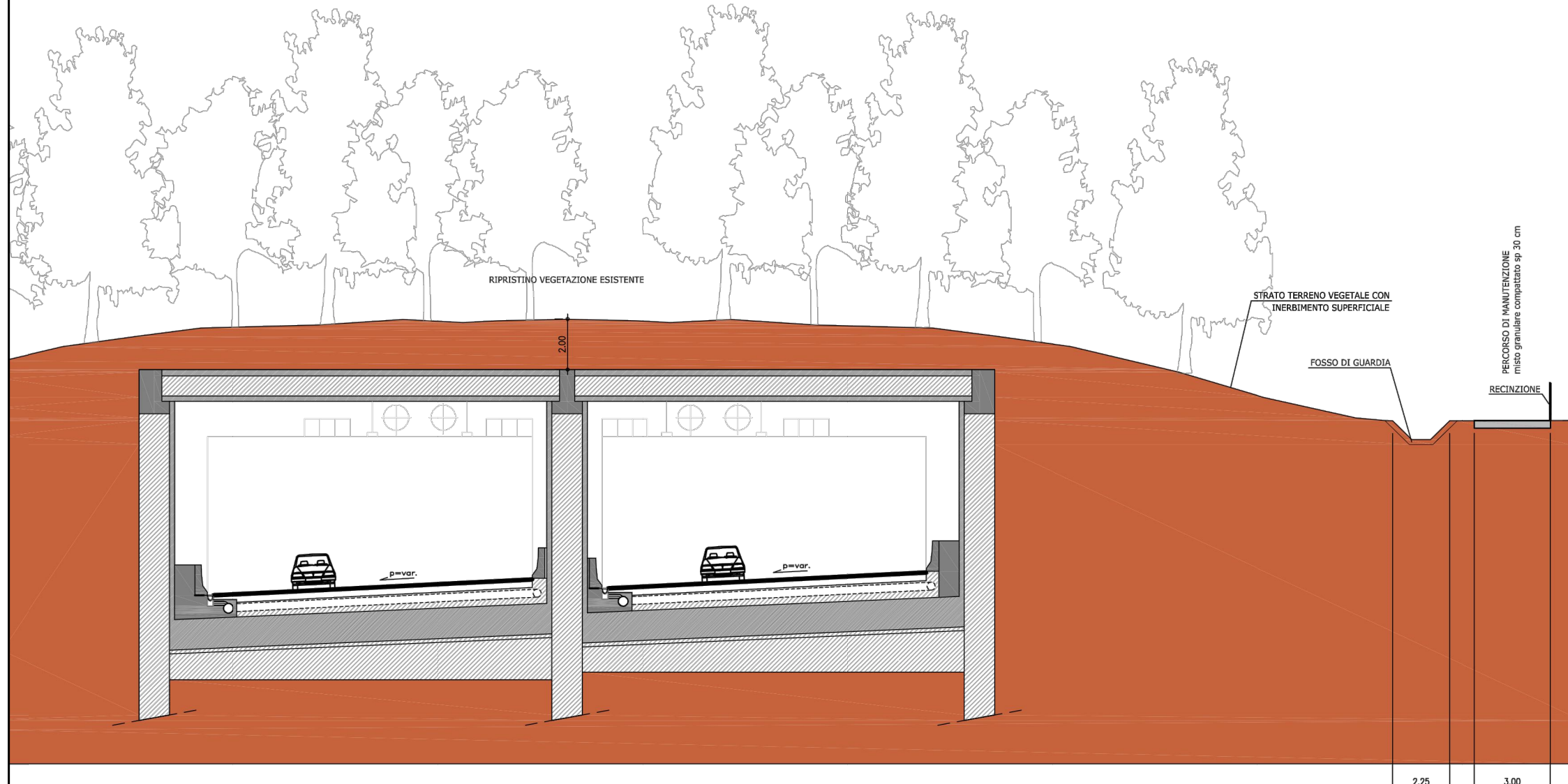


Esempio galleria artificiale in ambito naturalistico

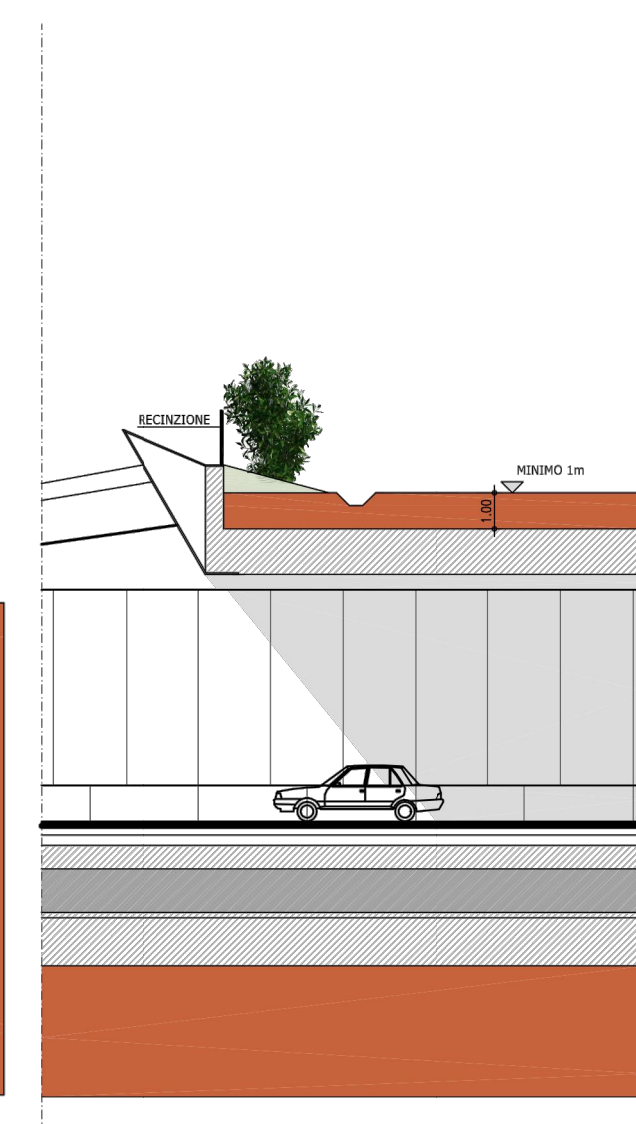


GALLERIA ARTIFICIALE: IMBOCCO IN AMBITO AGRICOLO

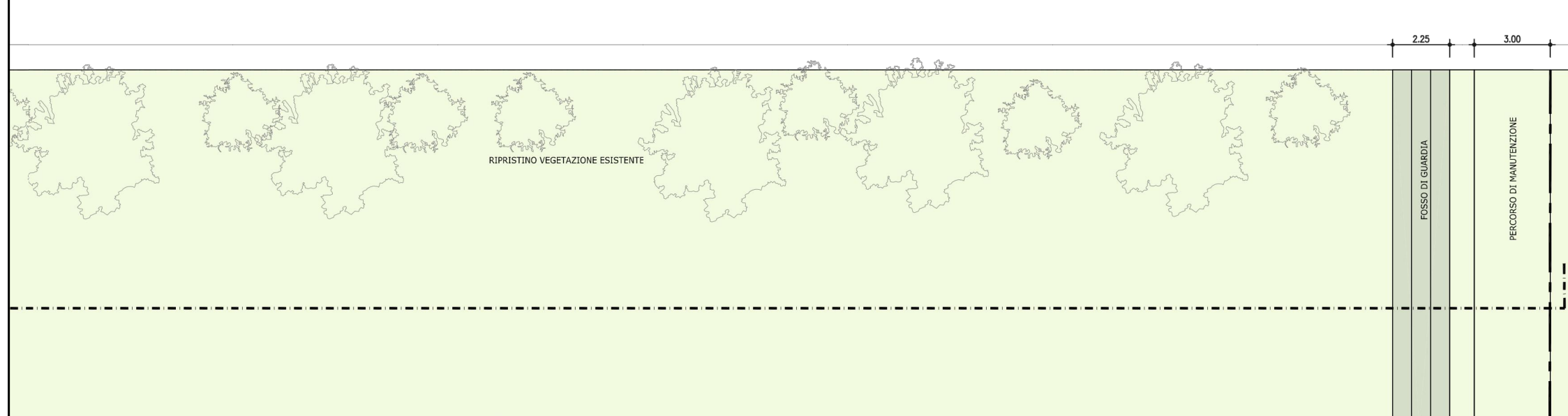
Sezione scala 1:200



Sezione imbocco scala 1:200



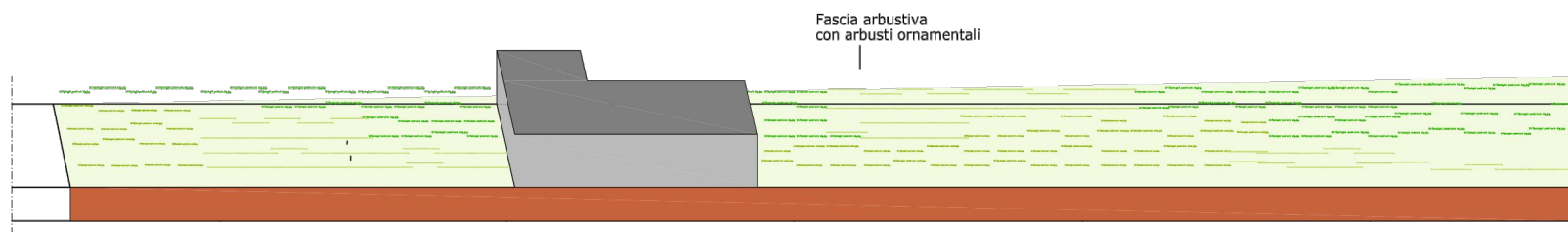
Planimetria scala 1:200



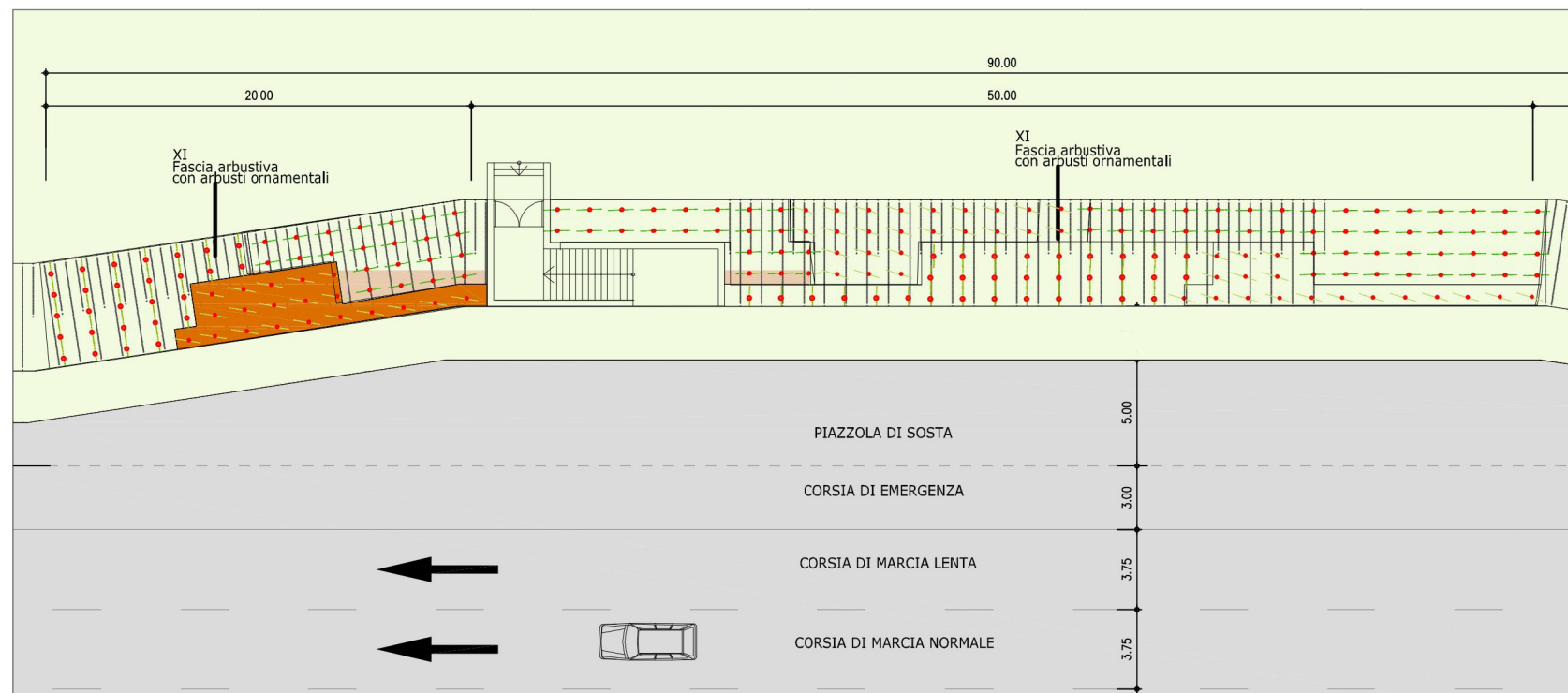
Esempio galleria artificiale in ambito agricolo



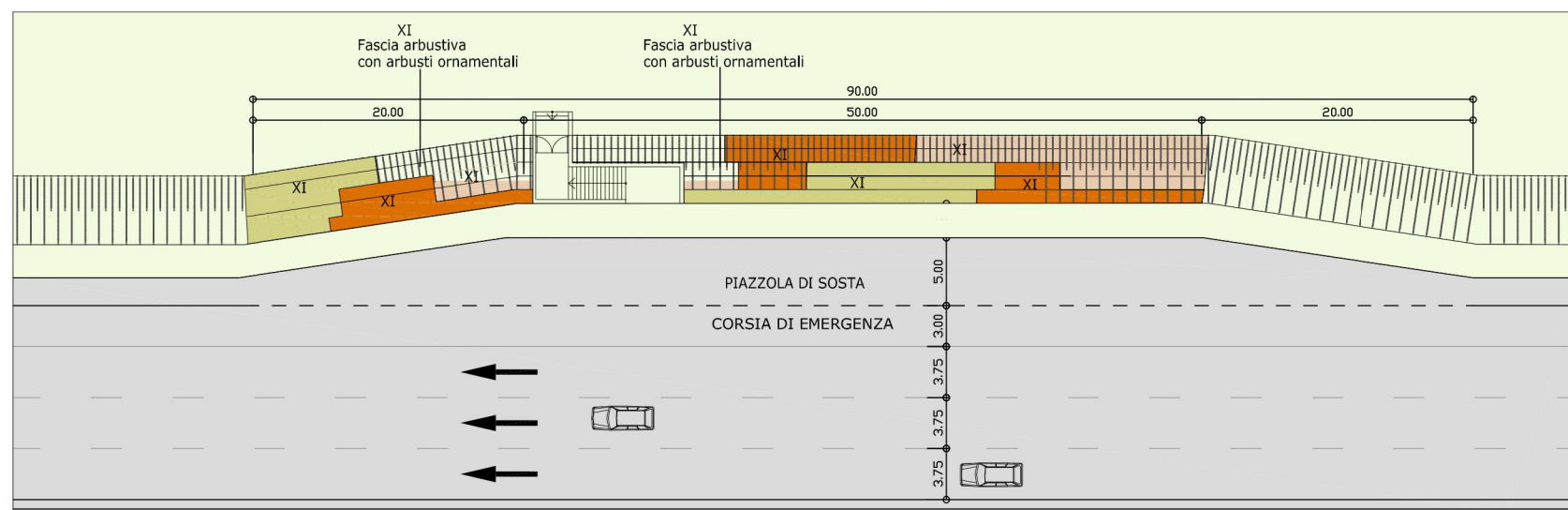
TRINCEA PIAZZOLA DI SOSTA scala 1:500/200



Sezione scala 1:200



Planimetria scala 1:200

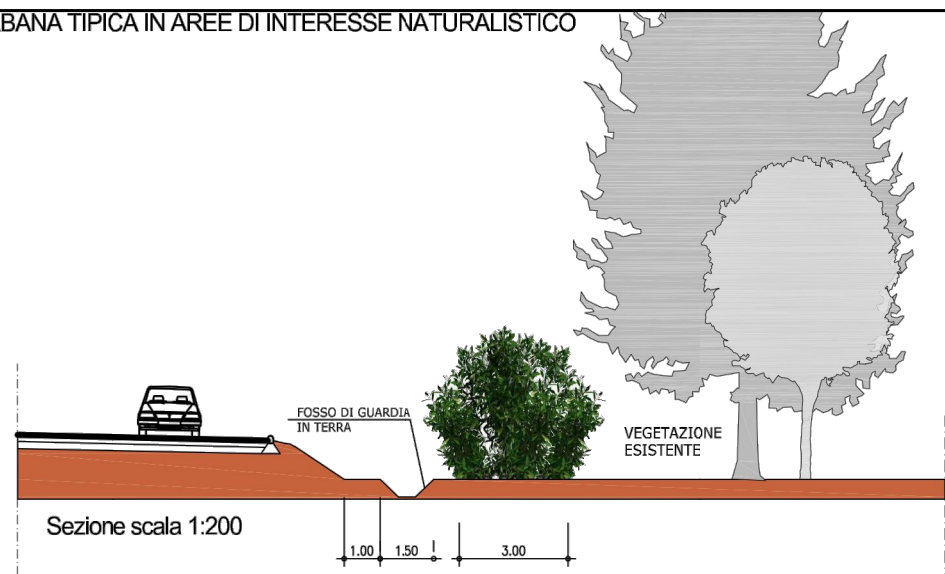


Planimetria scala 1:500



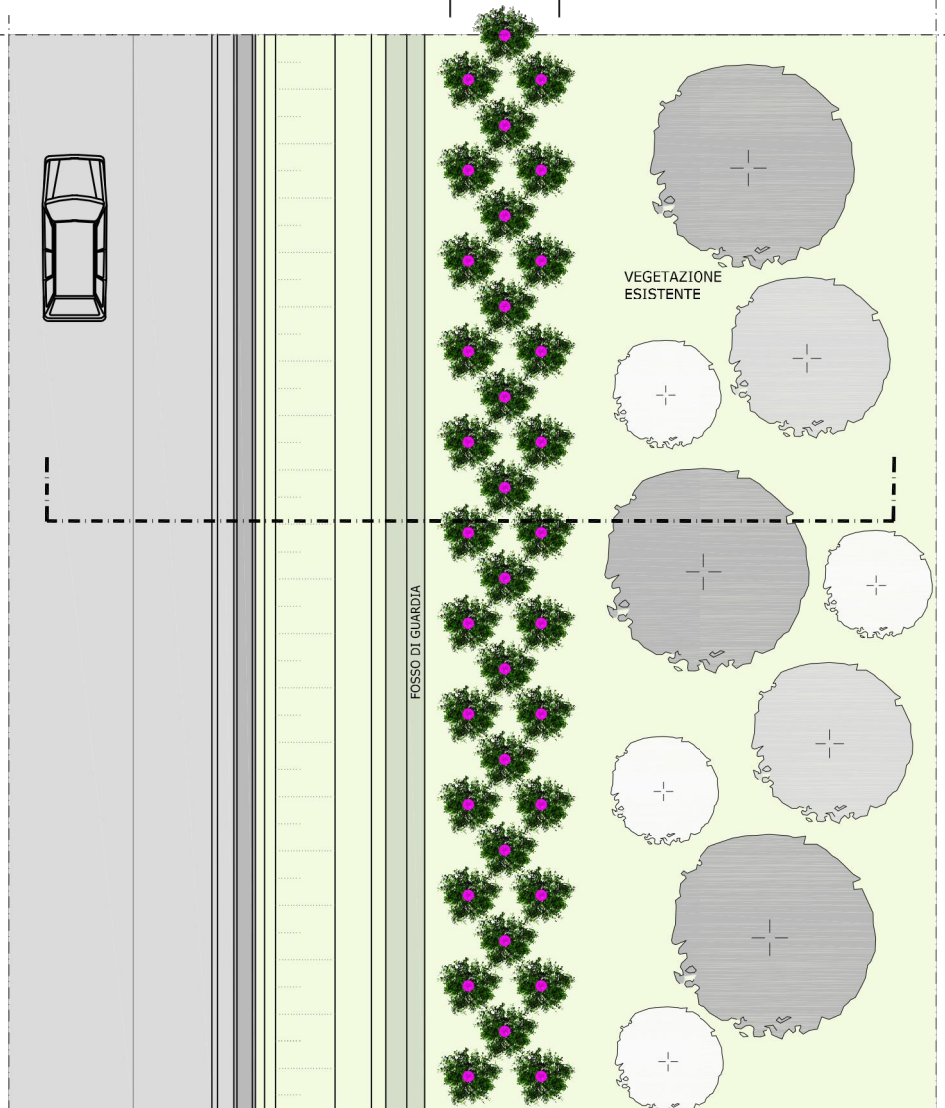
Particolari impianto specie ornamentali su scarpata

STRADA EXTRAURBANA TIPICA IN AREE DI INTERESSE NATURALISTICO
scala 1:200



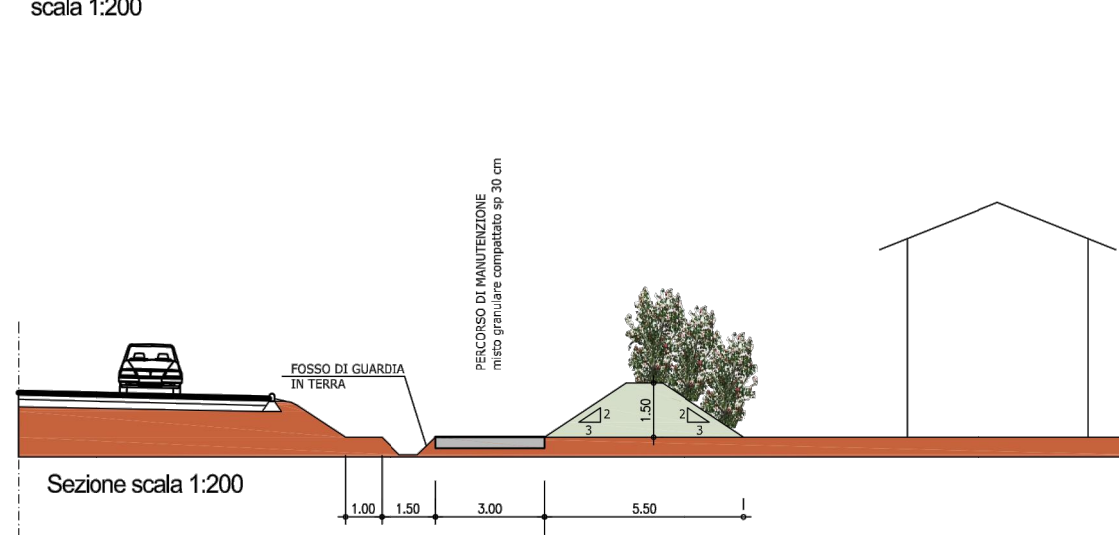
IX
Fascia arbustiva
H > 3m

3.00



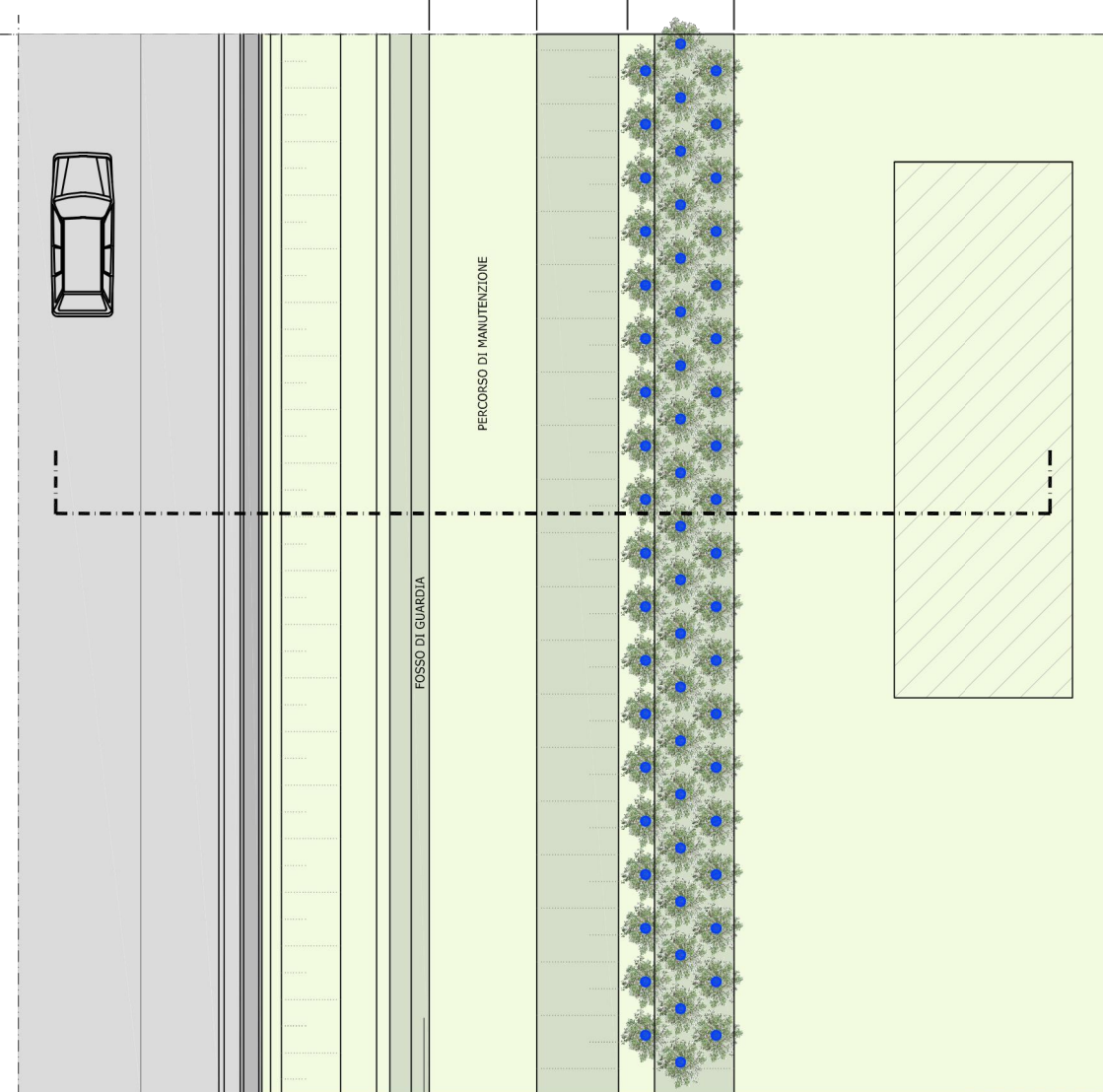
Planimetria scala 1:200

STRADA EXTRAURBANA CON MODELLAMENTO MORFOLOGICO
scala 1:200



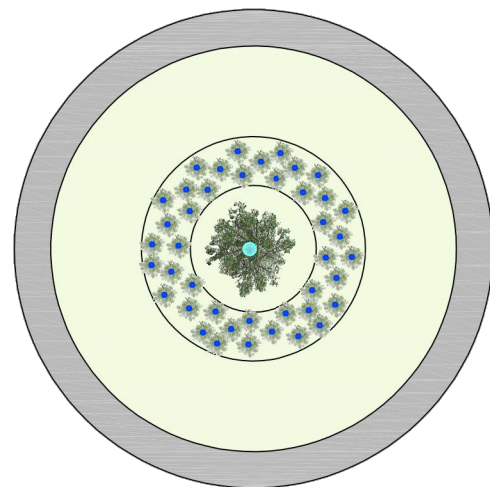
VIII
Fascia arbustiva
H < 3m

3.00

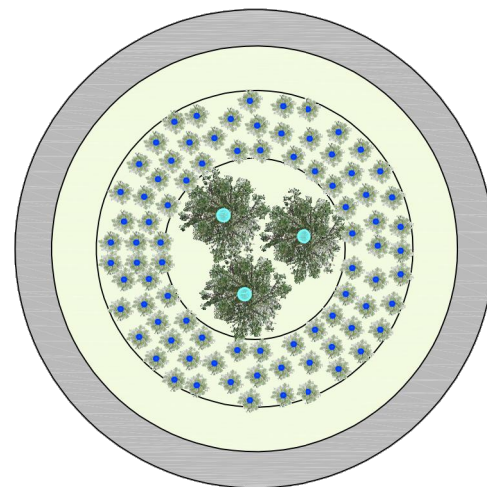


Planimetria scala 1:200

ROTONDA R1



ROTONDA R2



LEGENDA



Albero di seconda o terza grandezza



Arbusto h<3m

Esempi di abbinamento di materiali per la finitura dell'aiuola centrale



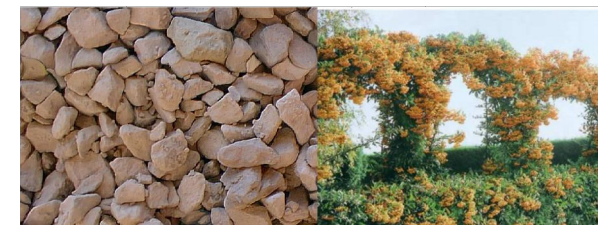
Prato fiorito

Graminacee



Arbusti ornamentali

Alberi III grandezza



Ghiaia colorata

Arbusti ornamentali



Rocce

Sempreverdi



Comunicazione

Informazione

ROTATORIA				
n°	CONSO CIAZIONI VEGETALI	Alberi II grandezza	Alberi III grandezza	
1	Alberi e arbusti ornamentali	<i>Acer platanoides</i>	<i>Acer campestre</i> 'Elsrijii'	
		<i>Acer platanoides</i> 'Crimson King'	<i>Acer platanoides</i> 'Globosum'	
		<i>Acer platanoides</i> 'Drummondii'	<i>Crataegus x caryerei</i> 'Lavallei'	
		<i>Acer platanoides</i> 'Fassen's Black'	<i>Crataegus oxyacantha</i> 'Paul's Scarlet'	
		<i>Acer pseudoplatanus</i> 'Spaethii'	<i>Fraxinus ornus</i>	
		<i>Acer pseudoplatanus</i> 'Leopoldii'	<i>Ligustrum lucidum</i> 'Exoelsum Superbum'	
		<i>Acer pseudoplatanus</i> 'Atrorubrum'	<i>Malus x robusta</i> 'Red Sentinel'	
		<i>Carpinus betulus</i>	<i>Morus alba</i>	
		<i>Celtis australis</i>	<i>Morus nigra</i>	
		<i>Corylus colurna</i>	<i>Prunus serrulata</i> 'Kanzan'	
		<i>Fraxinus oxycarpa</i>	<i>Prunus serrulata</i> 'Amanogawa'	
		<i>Quercus robur</i> 'Koster'	<i>Prunus subhirtella</i> 'Pendula Rosea'	
			<i>Pyrus calleryana</i> 'Chanticleer'	
			Arbusti < 3m	Arbusti > 3m
			<i>Berberis thunbergii</i> 'Atrorubra'	<i>Cornus mas</i>
			<i>Berberis julianae</i>	<i>Corylus maxima</i> 'Purpurea'
			<i>Cornus alba</i> 'Elegantissima'	<i>Cotinus coggygria</i>
			<i>Cornus stolonifera</i> 'Flaviramea'	<i>Cotinus coggygria</i> 'Royal Purple'
			<i>Cornus sanguinea</i>	<i>Ilex aquifolium</i>
			<i>Euonymus alatus</i>	
	<i>Lonicera pileata</i>			
	<i>Rosa paeae-gallica</i>			
	<i>Viburnum lantana</i>			
	<i>Viburnum opulus</i>			
	<i>Viburnum tinus</i>			
	<i>Viburnum davidii</i>			
	ROTATORIA TIPO 1	Dimensione	100mq (10% alberi; 20% arbusti; 70% prato)	
		Quantità e dimensioni d'impianto:	1 albero (h.300-350cm o circ.18-18cm)	
			42 arbusti (vaso 24cm)	
		TOTALE	43 (1 albero e 80 arbusti)	
	ROTATORIA TIPO 2	Dimensione	100mq (20% alberi; 40% arbusti; 40% prato)	
		Quantità e dimensioni d'impianto:	3 alberi (h.300-350cm o circ.18-18cm)	
			84 arbusti (vaso 24cm)	
		TOTALE	87 (3 alberi e 80 arbusti)	