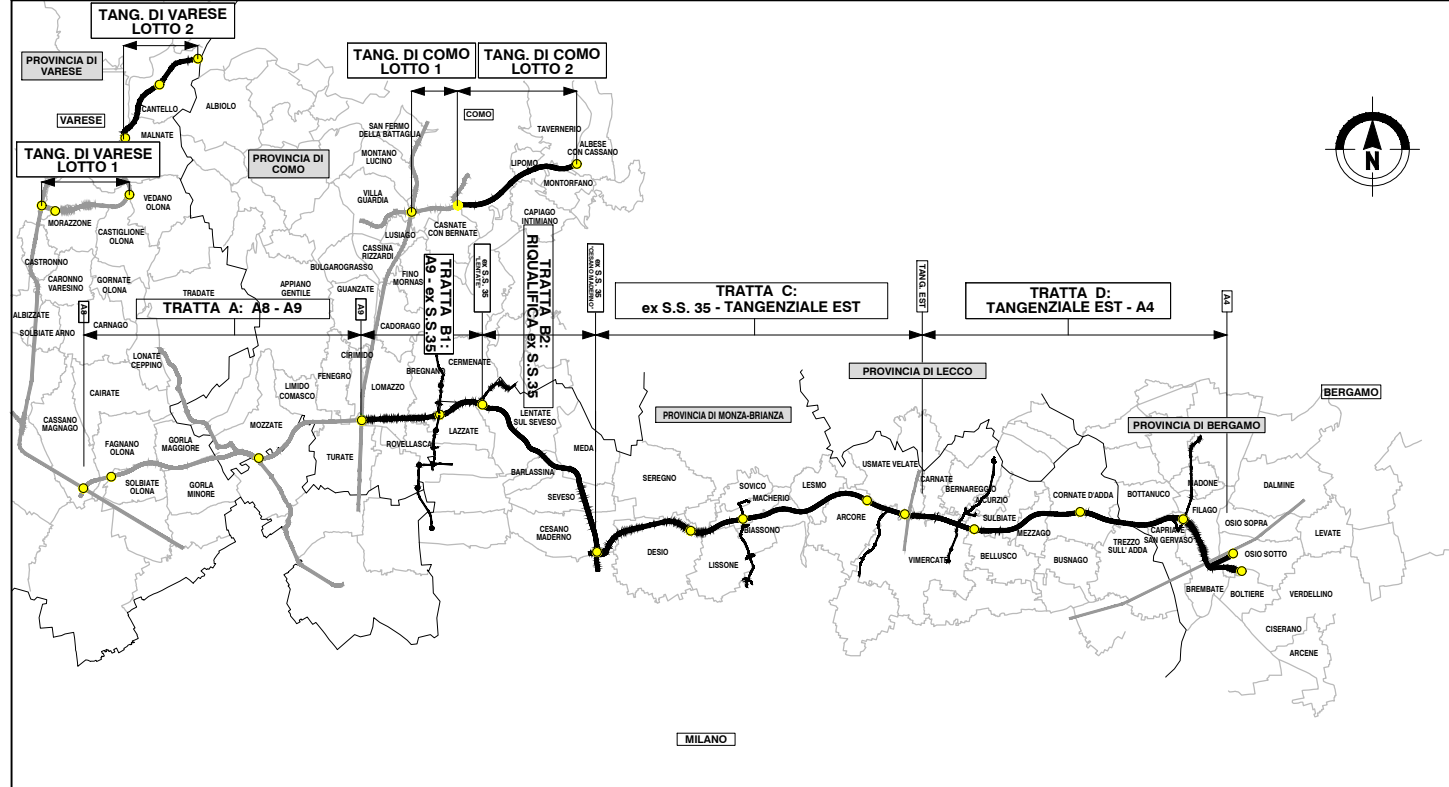


QUADRO DI UNIONE GENERALE



COLLEGAMENTO AUTOSTRADALE DALMINE-COMO-VARESE-VALICO DEL GAGGIOLO E OPERE AD ESSO CONNESSE

CODICE C.U.P. F11B06000270007

PROGETTO ESECUTIVO TRATTA B2

CANTIERIZZAZIONE FASI DI LAVORO TRATTA 4 QUADERNO DELLE TRANSIZIONI

IDENTIFICAZIONE ELABORATO

FASE PROGETTUALE	WBS				PARTE DI OPERA	TIPO ELABORATO	PROGRESSIVA	REVISIONE ESTERNA
	AMBITO	TRATTA	CATEGORIA	OPERA				
E	CN	B2	A00	CN00	999	FS	071	A

DATA 31 Luglio 2023
SCALA -

CONCEDENTE



CONTRAENTE GENERALE

PEDELOMBARDA NUOVA S.c.p.A.

DATA REVISIONE

DATA	REVISIONE	
Aprile 2023	Bozza	A01
31 Luglio 2023	Consegna	A02

ELABORAZIONE PROGETTUALE

PROGETTISTI	RESPONSABILE INTEGRAZIONE PRESTAZIONI SPECIALISTICHE
Ing. Alberto Rinaldi	Ing. Carlo Listorti
Redatto Ing. Procopio Francesco	Visto Ing. Andrea Molteni
	Approvato Ing. Enrico Moretti

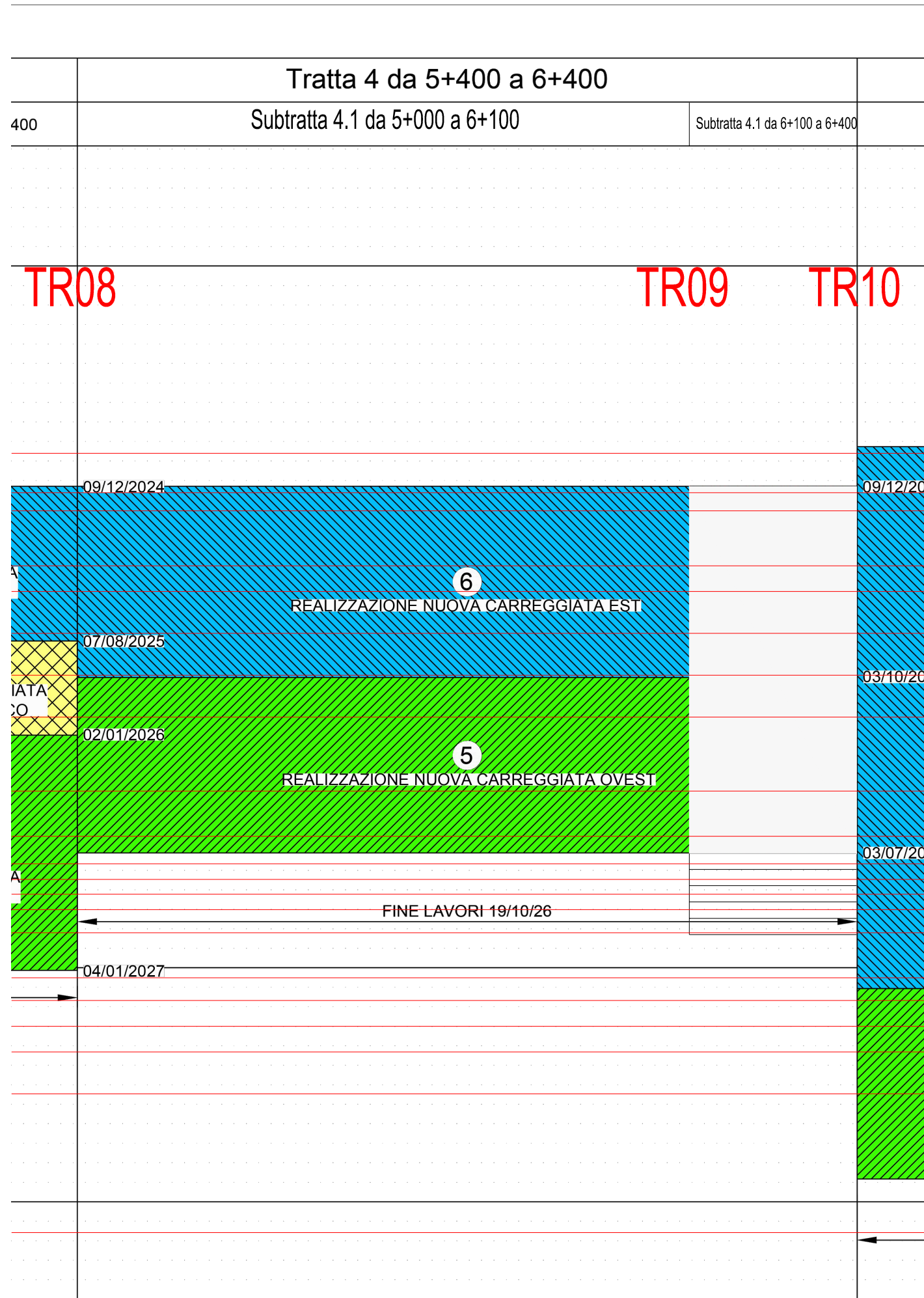
CONCESSIONARIO

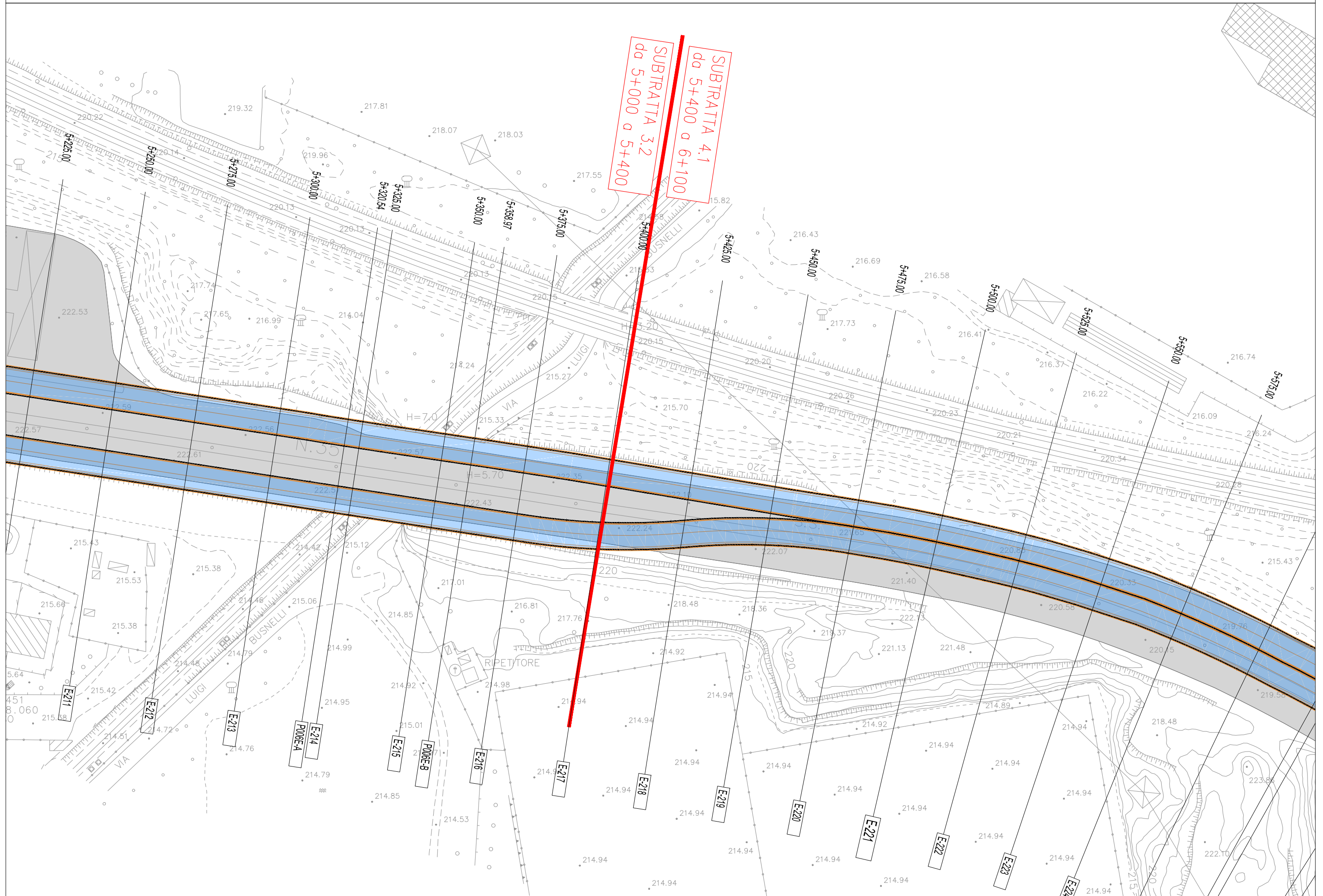


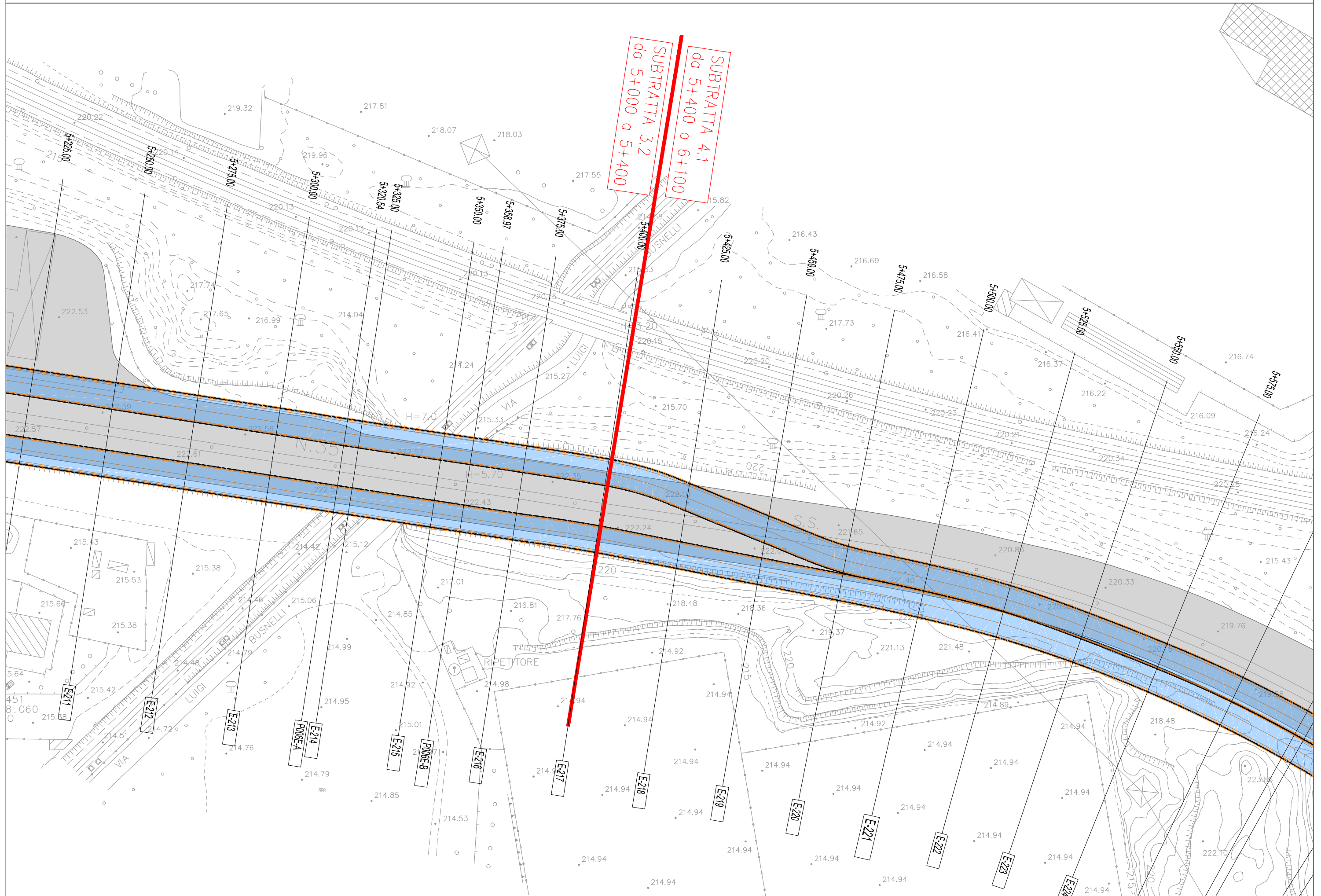
PROGETTISTA

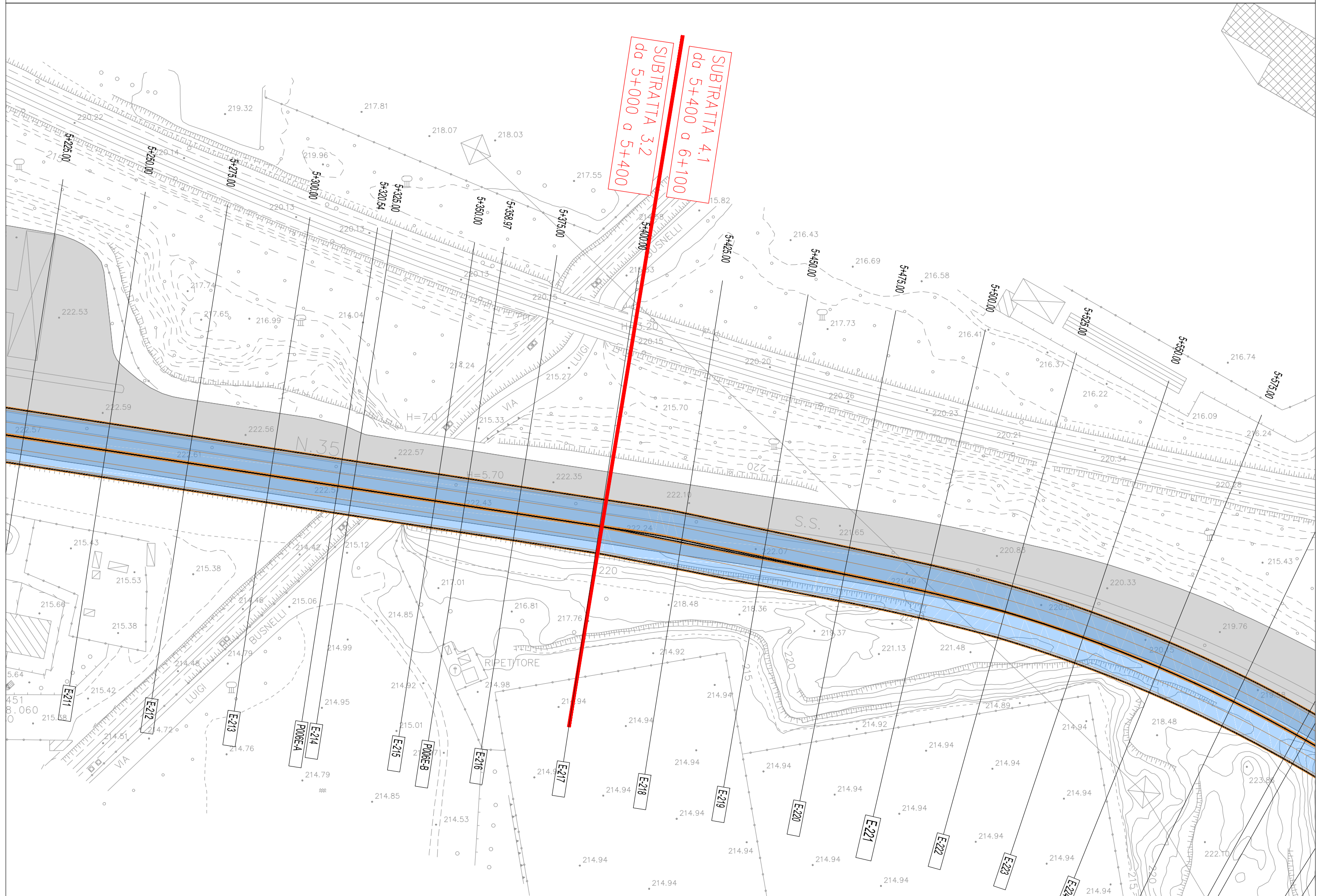


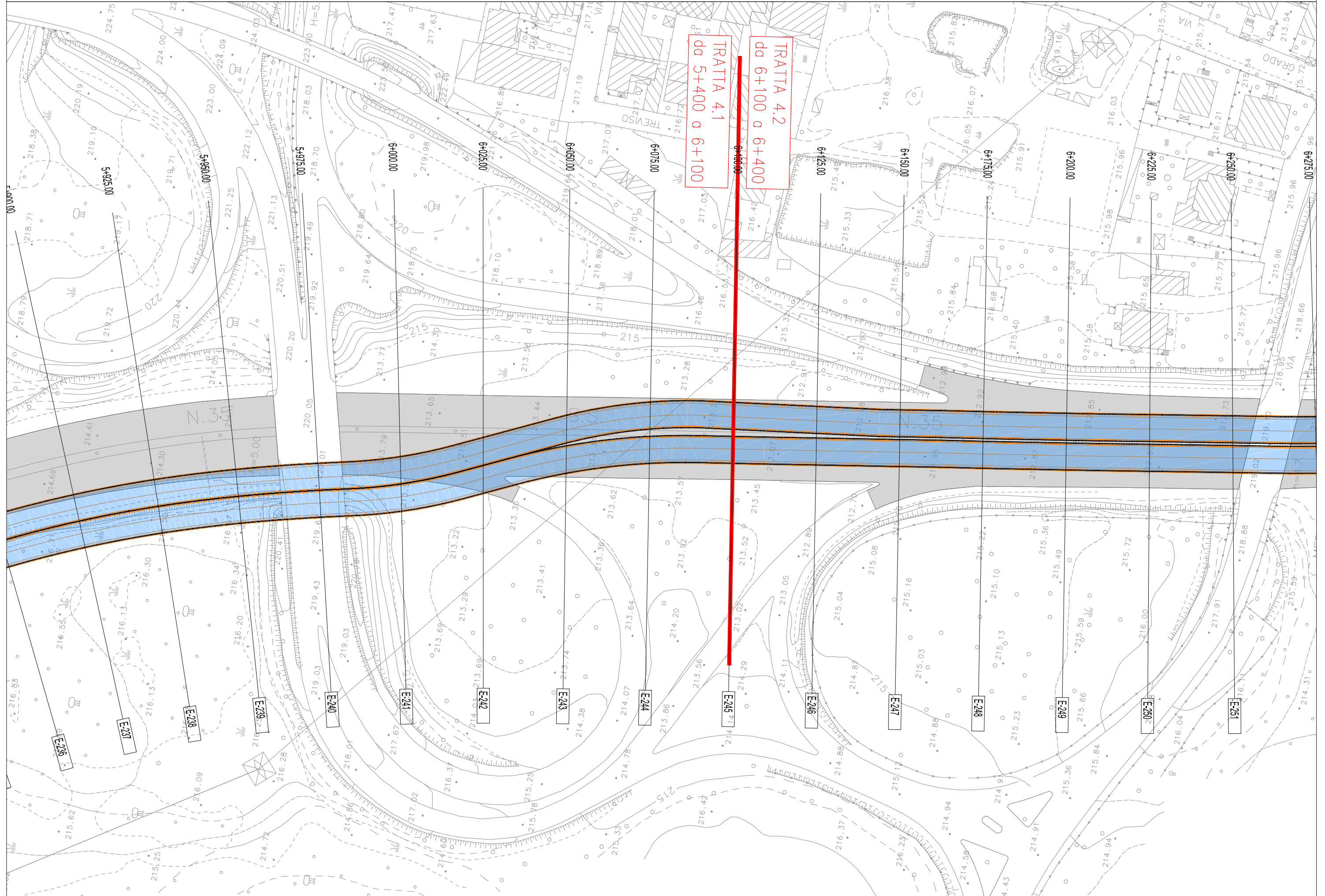
Il presente documento non potrà essere copiato, riprodotto o altrimenti pubblicato in tutto o in parte senza il consenso scritto di Autostrada Pedemontana Lombarda S. p. A. Ogni utilizzo non autorizzato sarà perseguito a norma di legge.
This document may not be copied, reproduced or published either in part or entirely without the written permission of Autostrada Pedemontana Lombarda S. p. A. Unauthorized use will be persecuted by law.

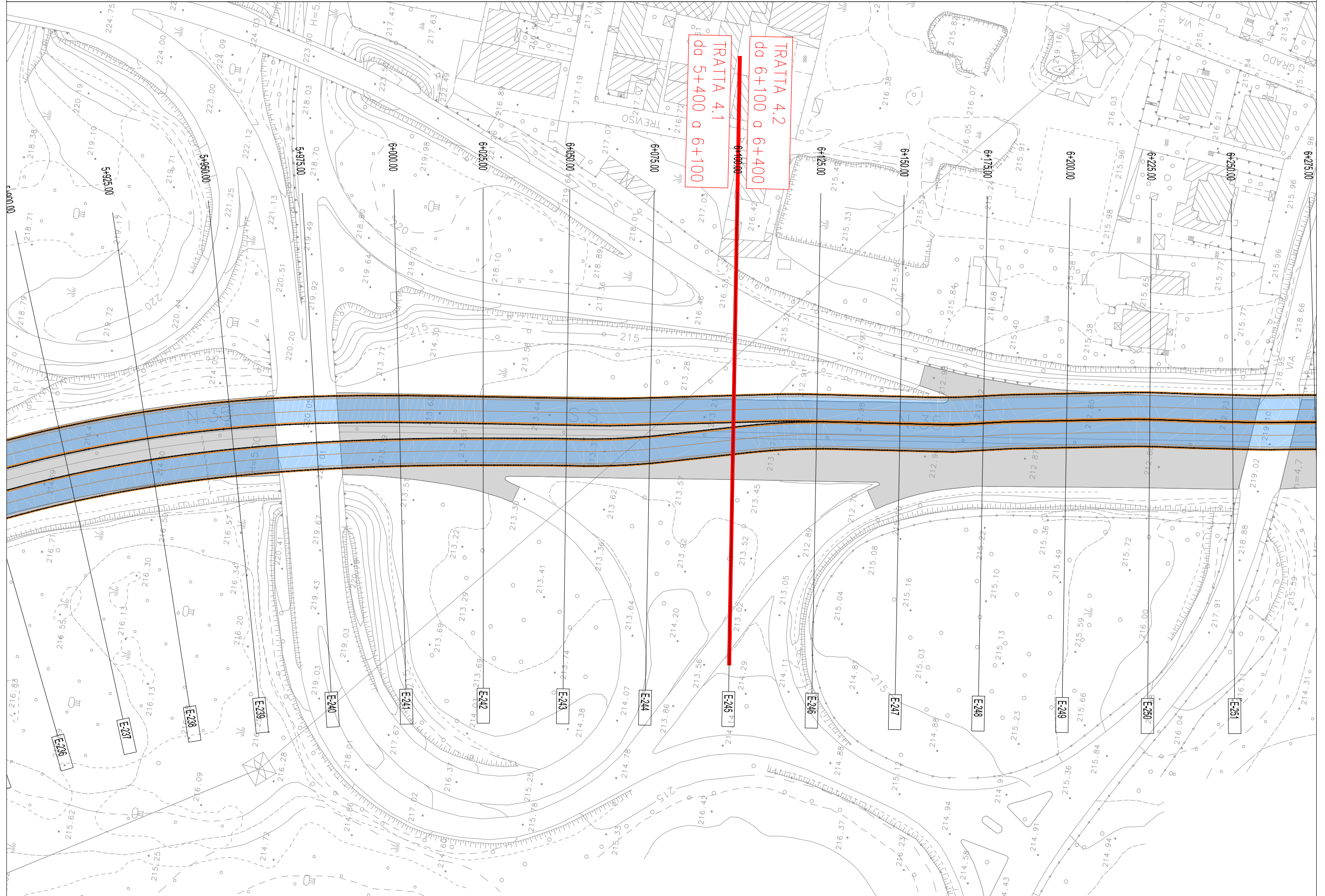


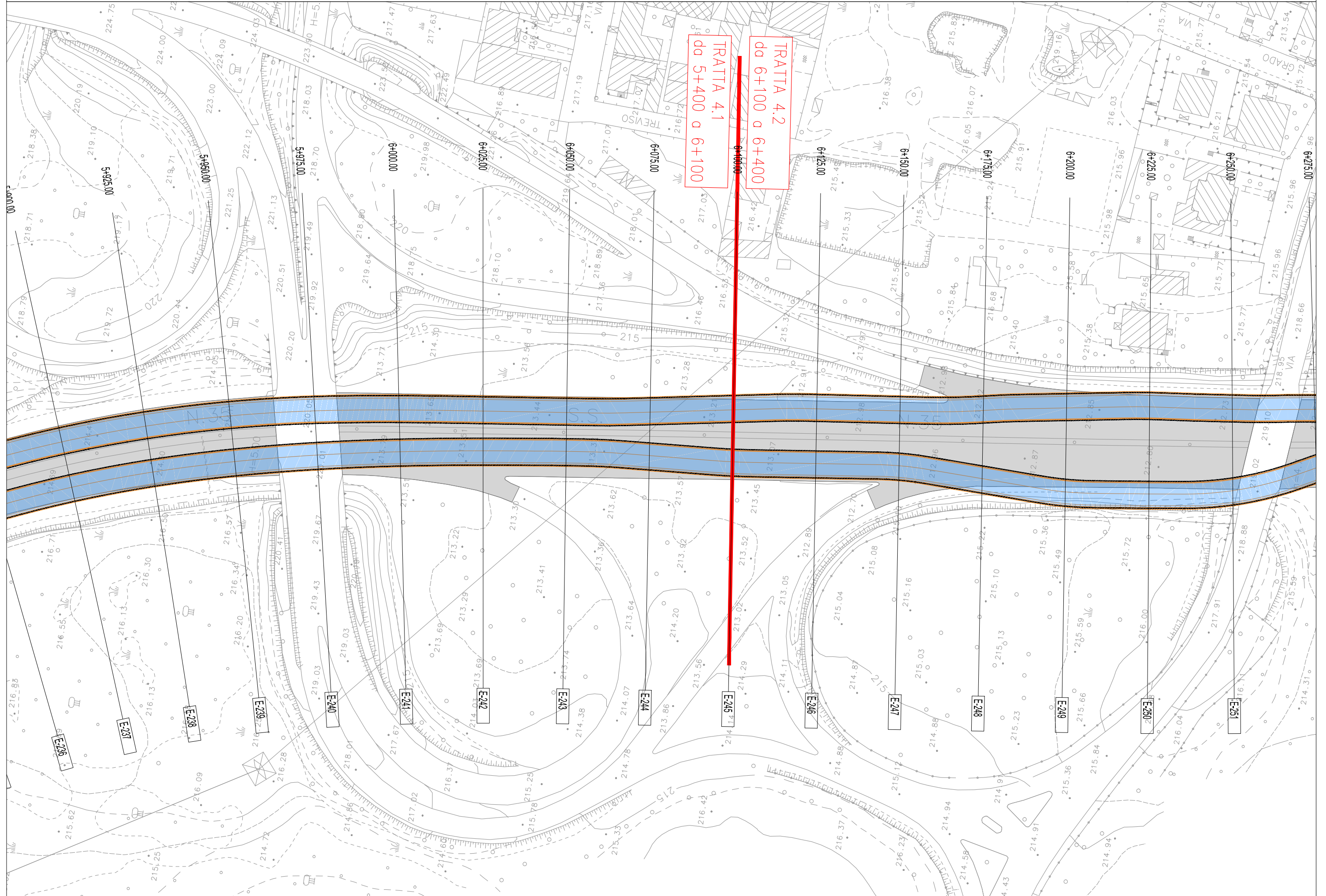


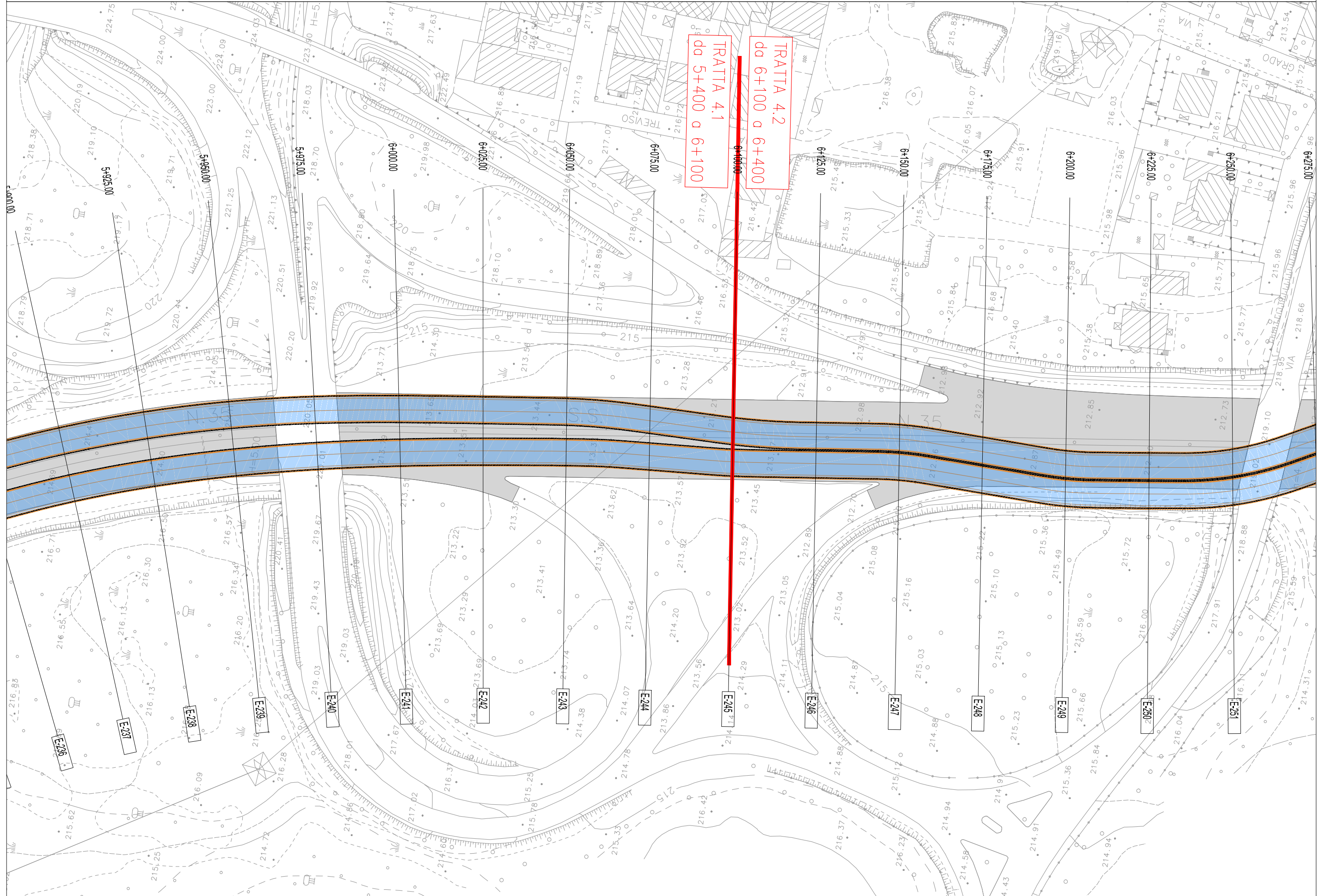


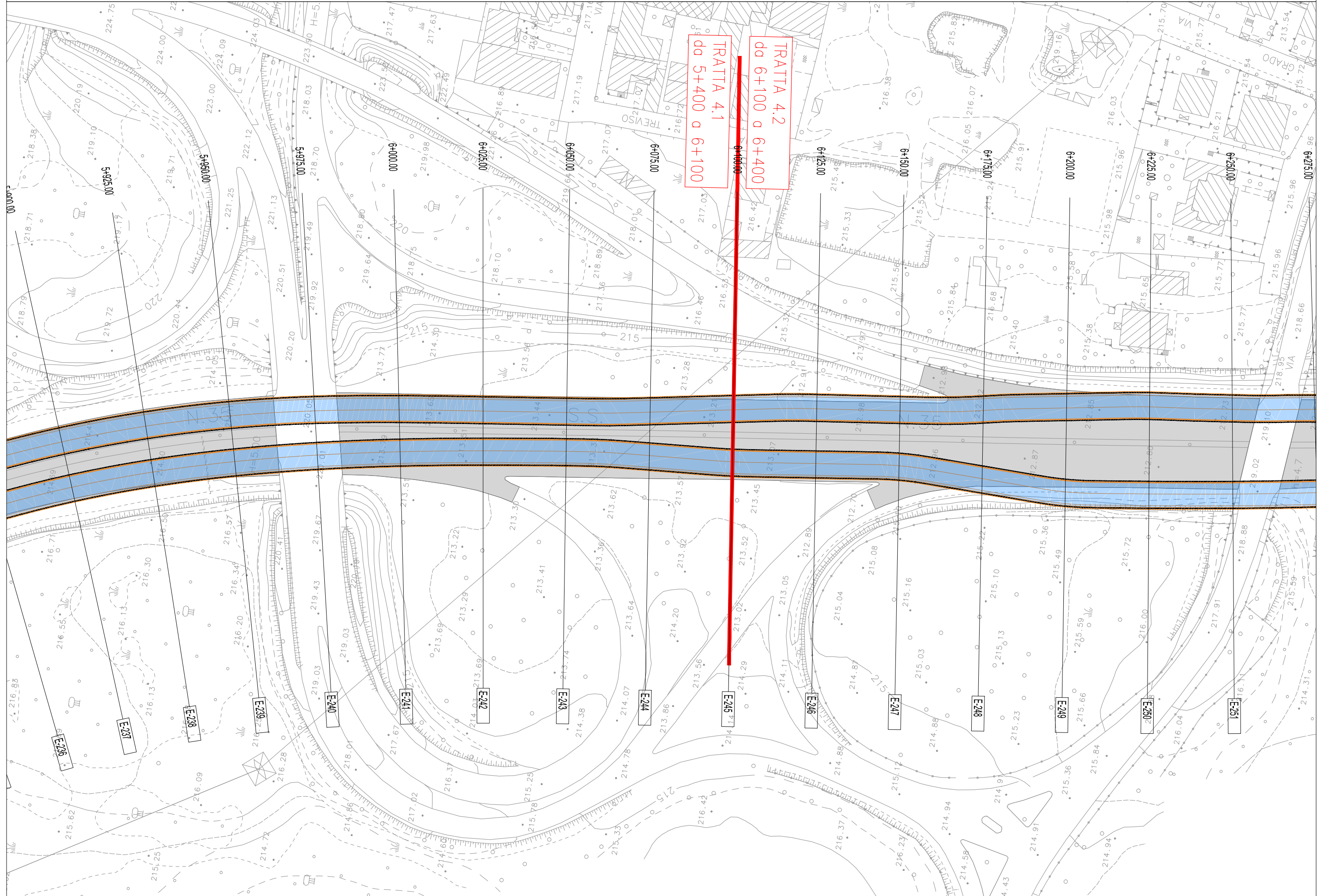


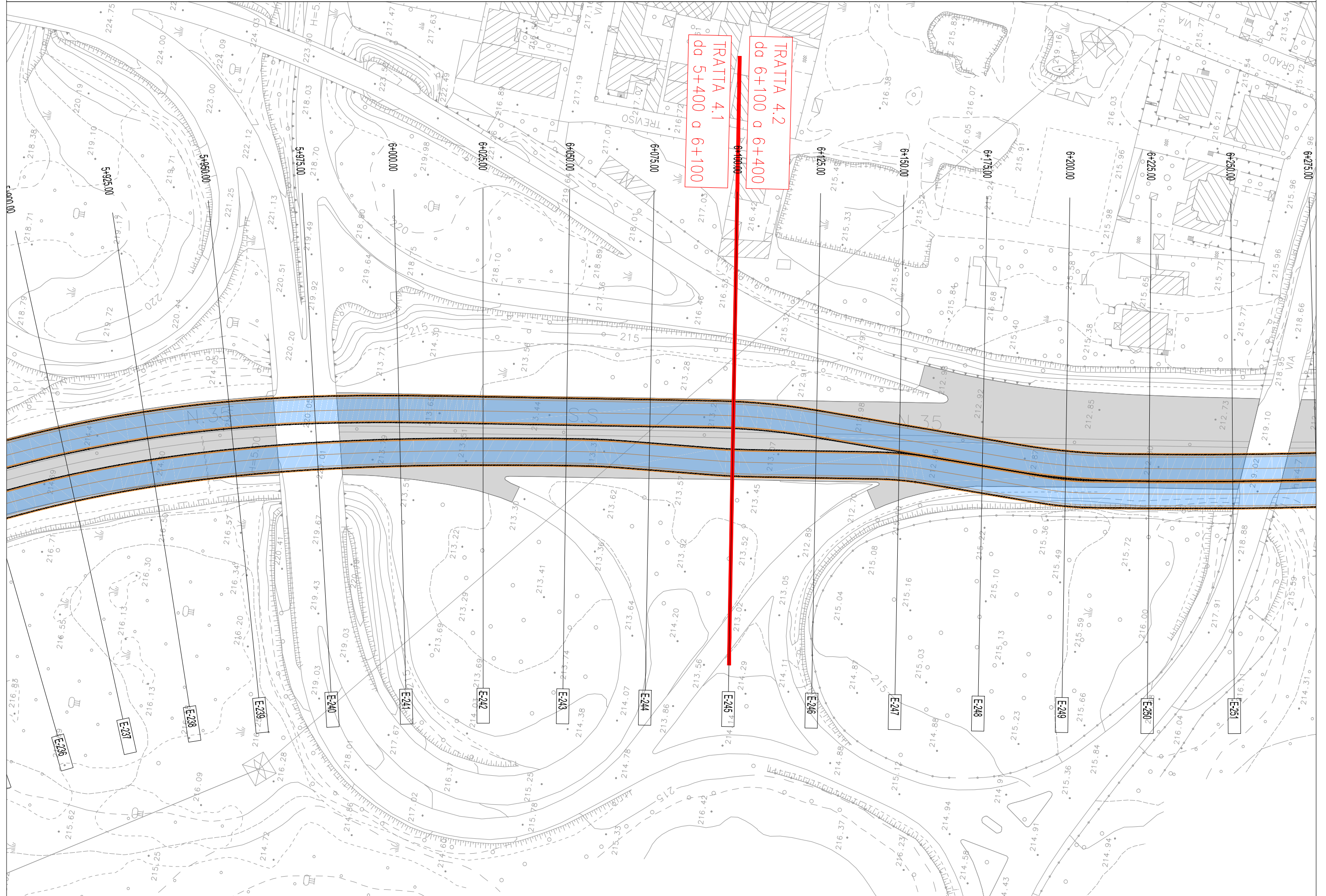




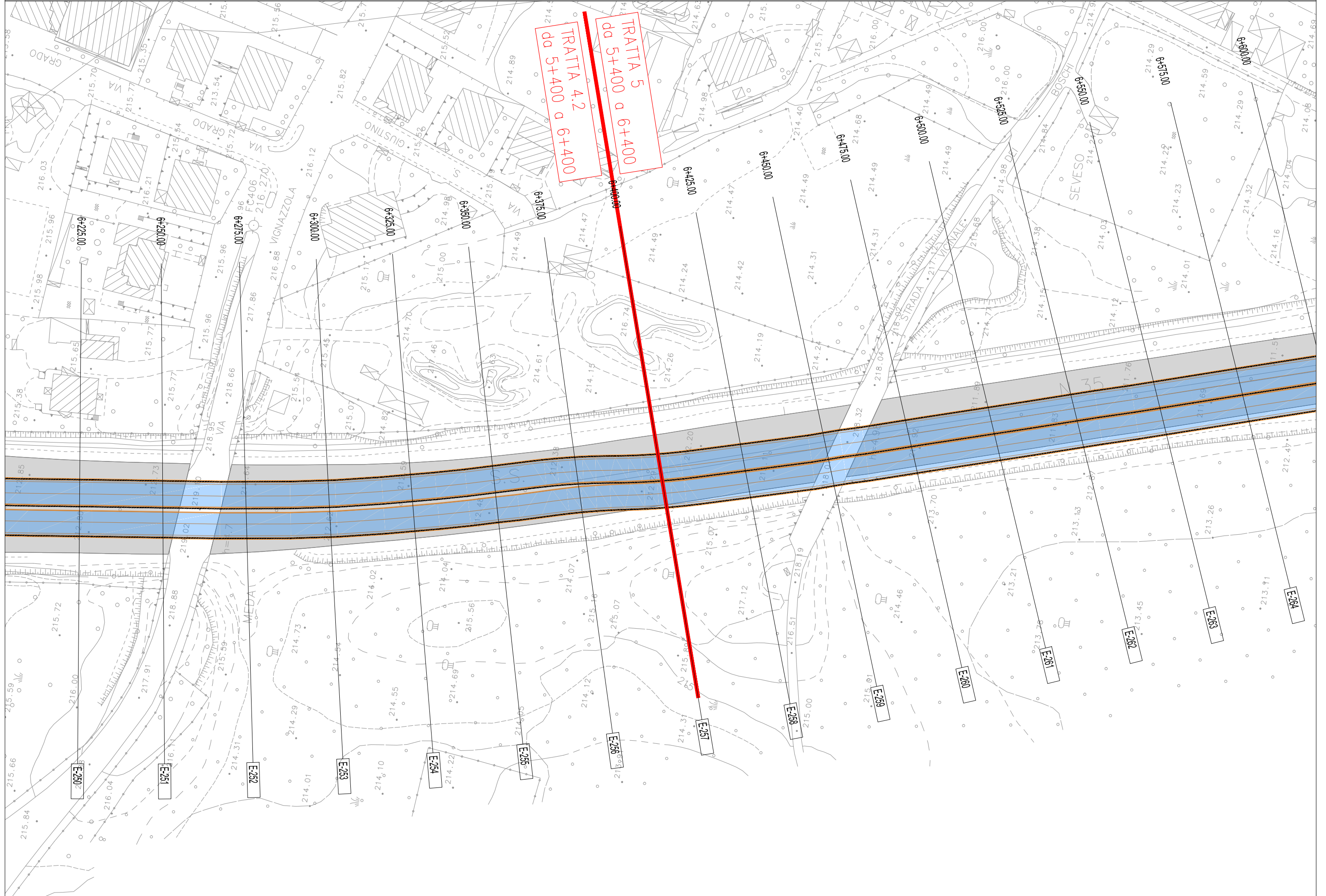




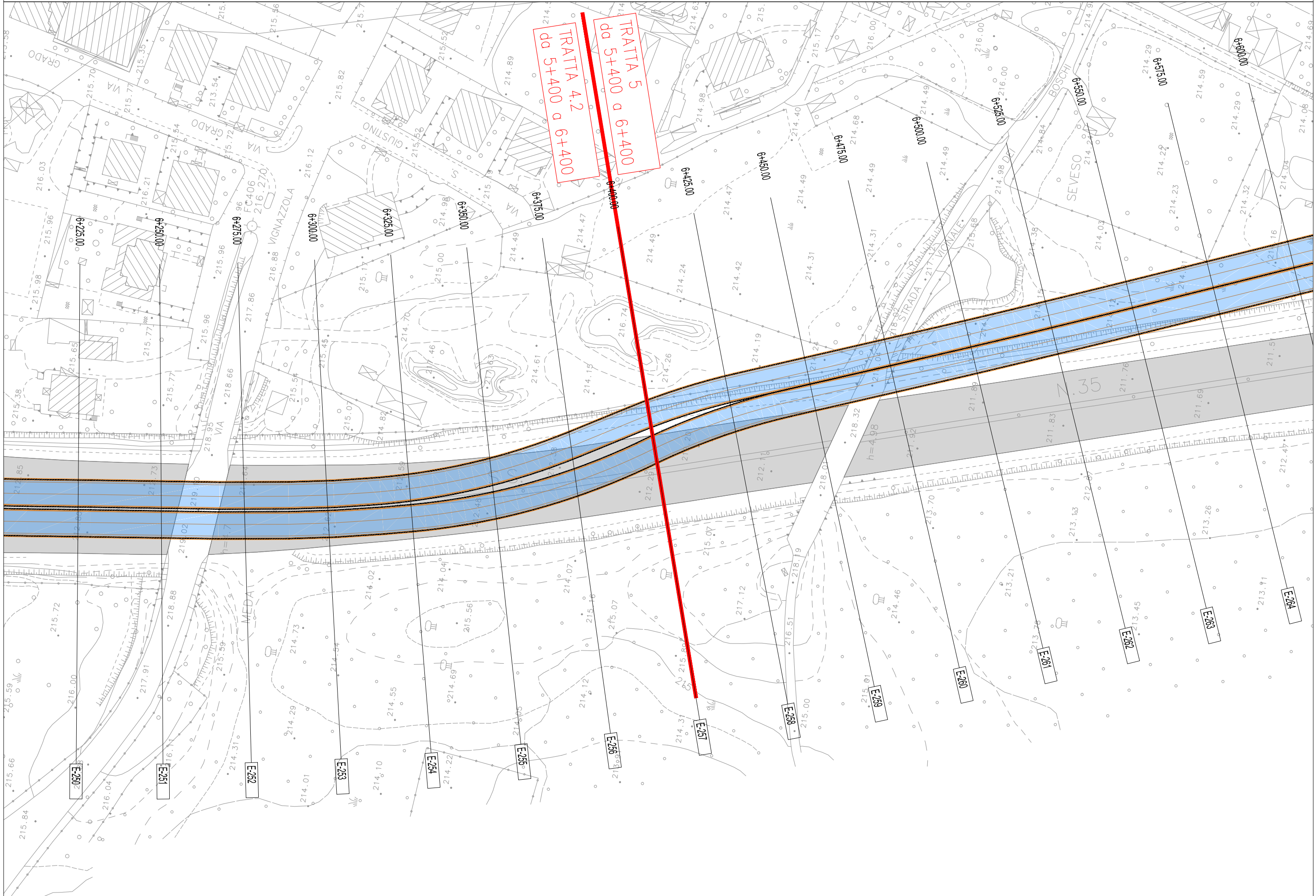




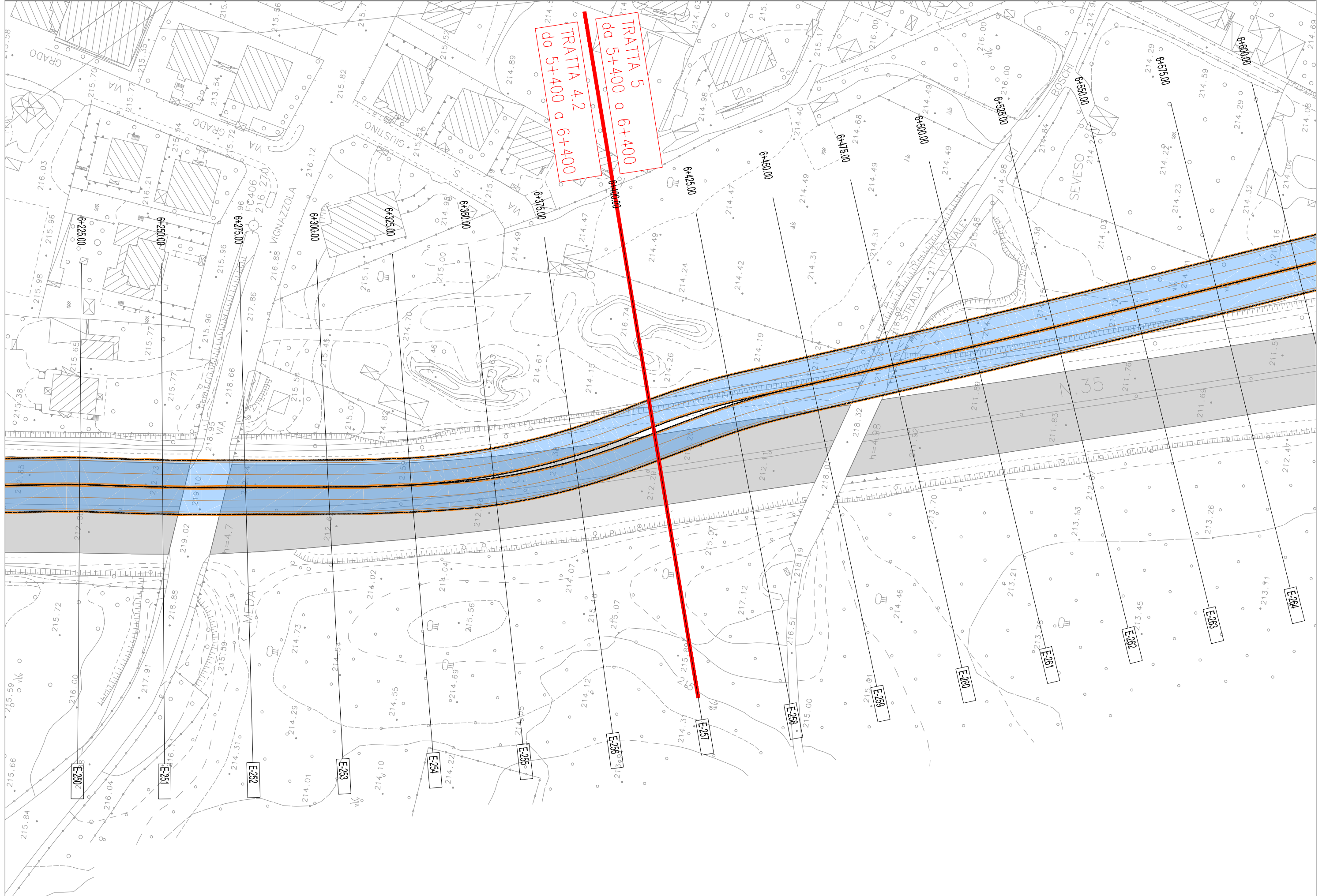
TR10 - SCENARIO 1-2-3-4-5-6-7 - scala 1:1000



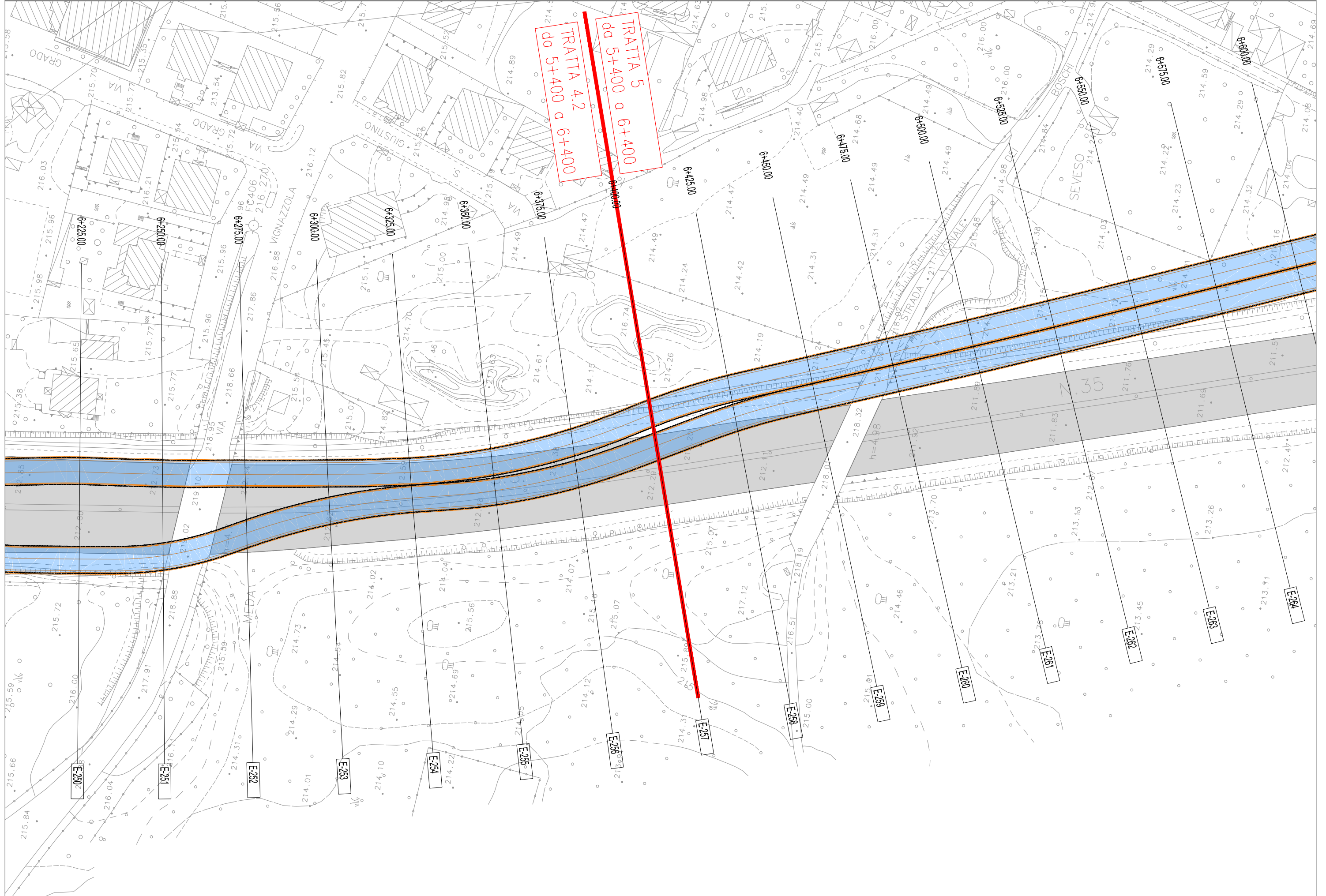
TR10 - SCENARIO 8-9-10 - scala 1:1000



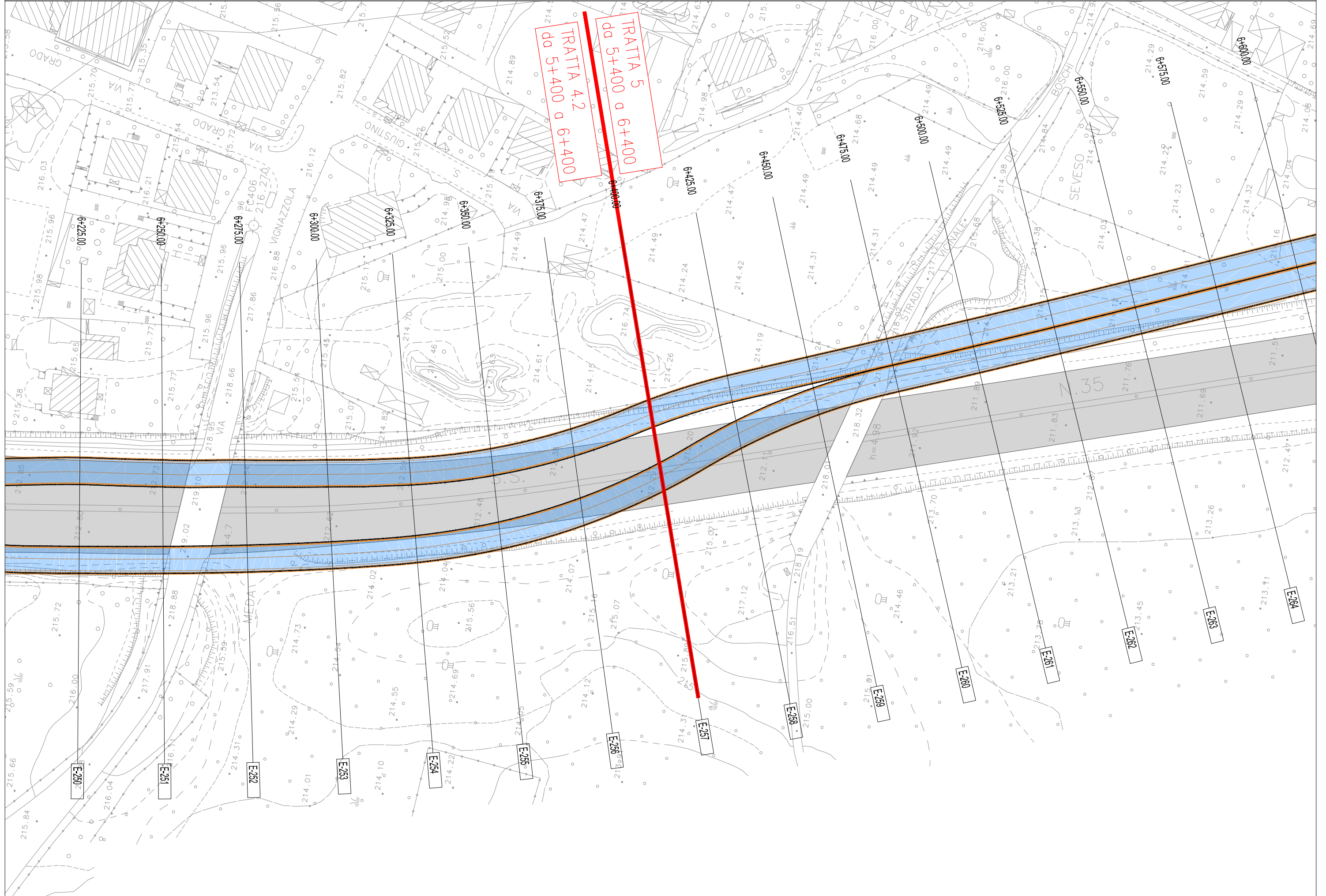
TR10 - SCENARIO 11 - scala 1:1000



TR10 - SCENARIO 12 - scala 1:1000



TR10 - SCENARIO 14 - scala 1:1000



TR10 - SCENARIO 15 - scala 1:1000

