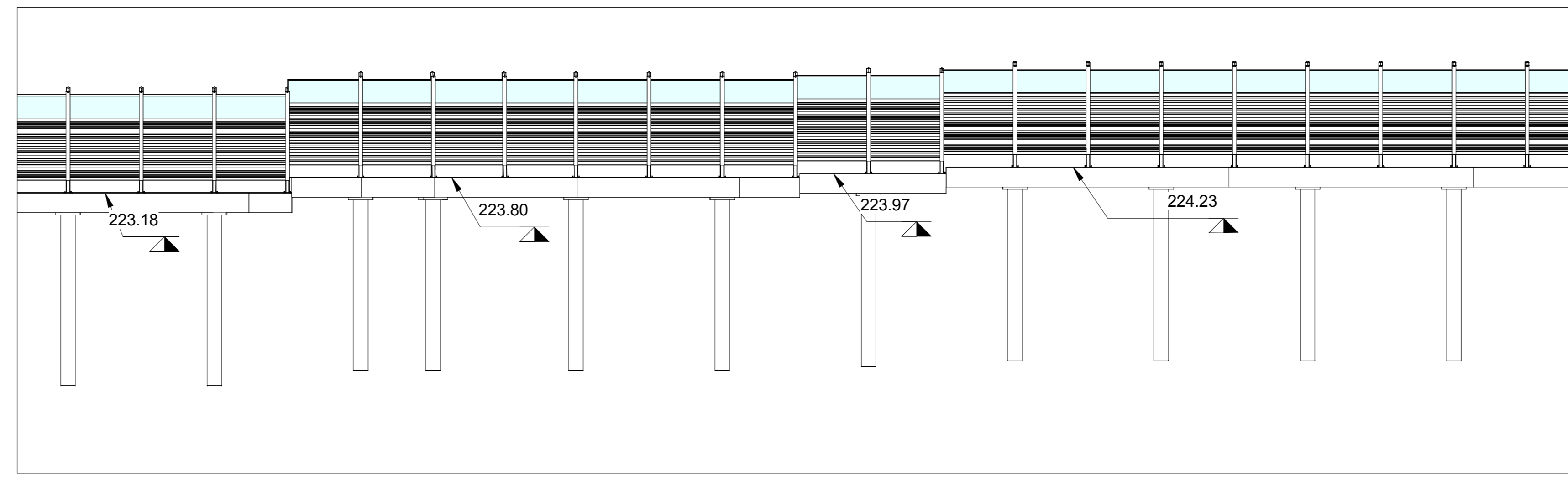


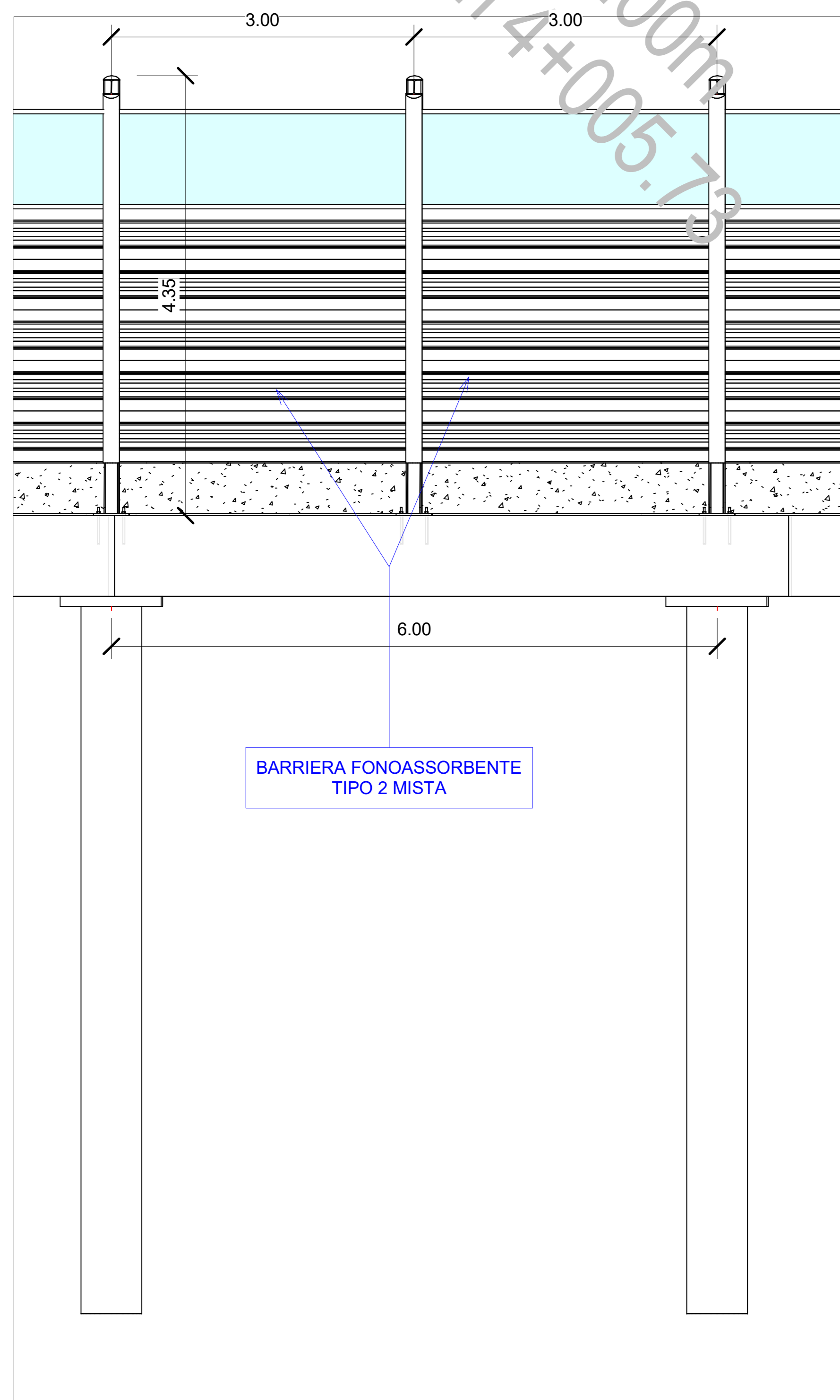
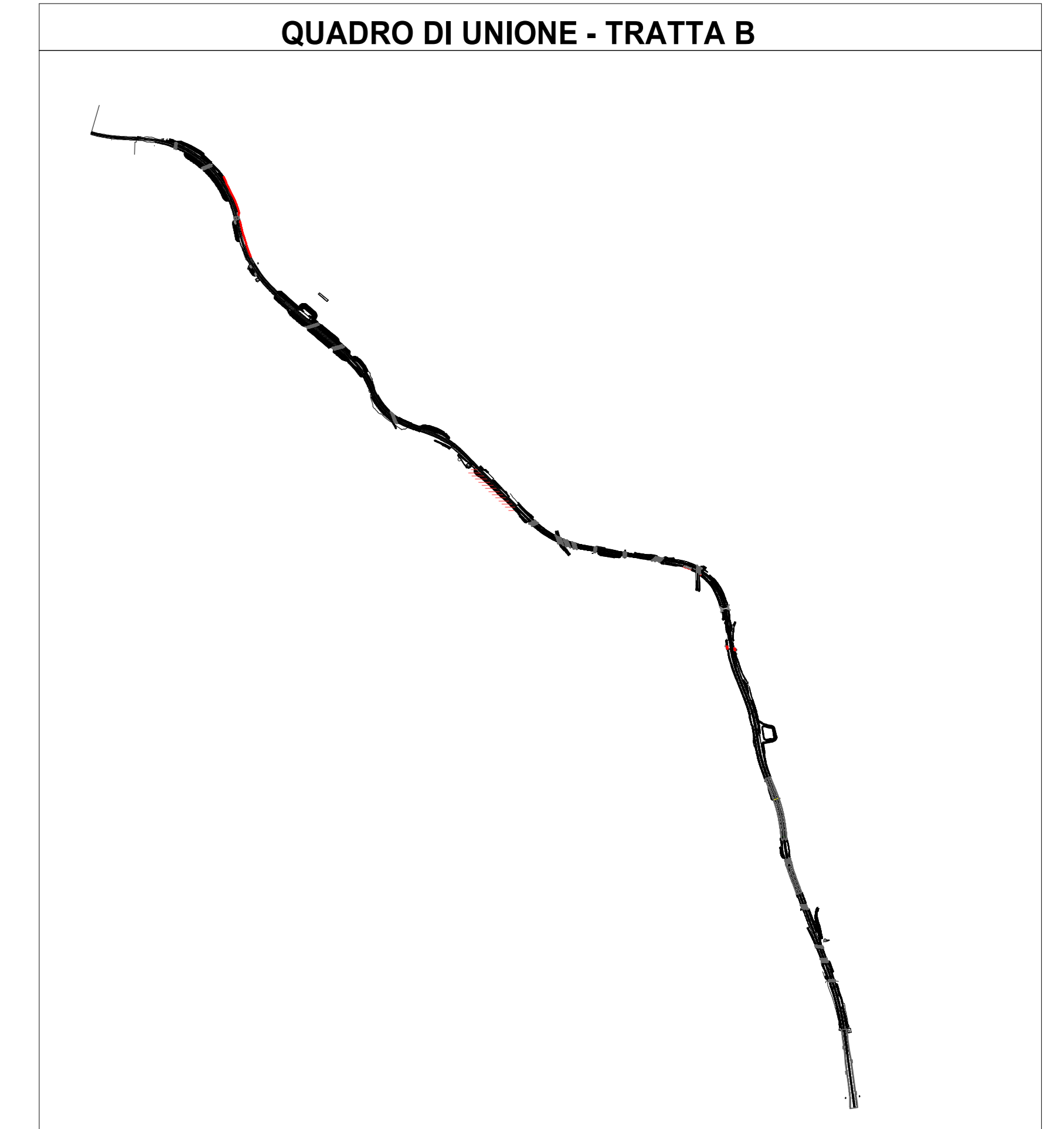
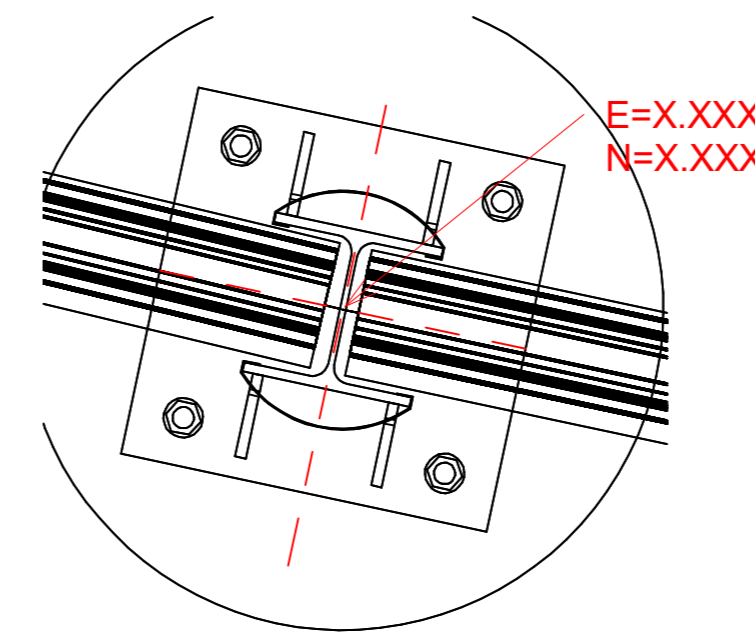
1 Stralcio Planimetrico 28a pt3
1 : 200



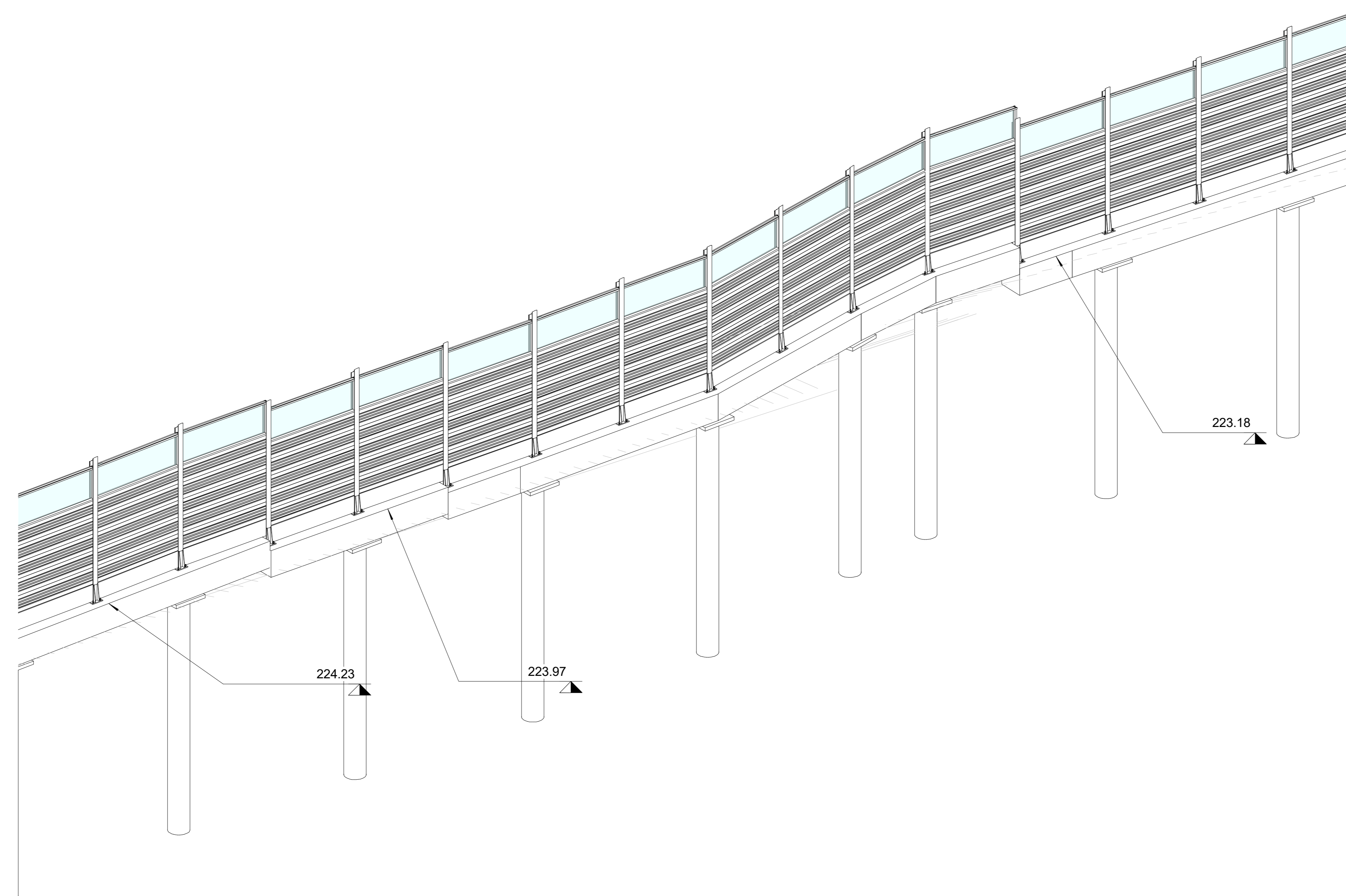
2 Sezione WBS 28 pt3
1 : 200

WBS 28a - Abaco Coordinate di Tracciamento - Opere...

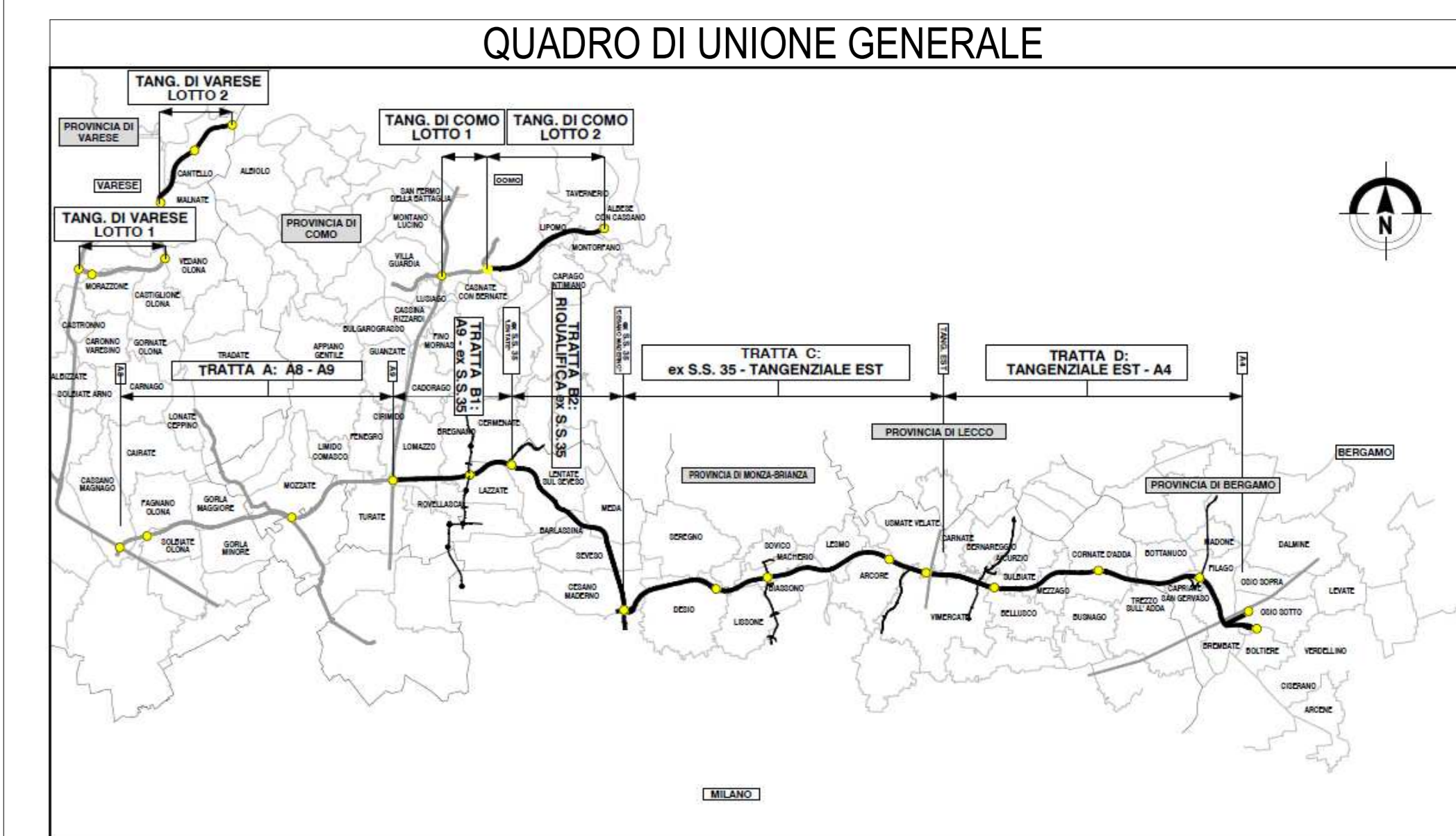
PUNTO n.	E	N
M.179	144679.760251	243401.571535
M.180	144681.965726	243399.537836
M.181	144684.175072	243397.508364
M.182	144686.430317	243395.530071
M.183	144688.672319	243393.536618
M.184	144691.279463	243392.052435
M.185	144693.886607	243390.568252
M.186	144696.406129	243388.939753
M.187	144698.575249	243386.867334
M.188	144700.744368	243384.794914
M.189	144702.887154	243382.695277
M.190	144705.034504	243380.600307



3 Sezione tipologica su palo
1 : 50



4 Assonometria WBS 28a pt3



CONCESSIONI AUTOSTRADALI LOMBARDE
Autosstrada Padovese
CONCESSIONI AUTOSTRADALI LOMBARDE

**COLLEGAMENTO AUTOSTRADALE
DALMINE-COMO-VARESE-VALICO DEL GAGGIOLO E OPERE AD ESSO CONNESSE**
CODICE C.U.P. F11B06027007

**PROGETTO ESECUTIVO
TRATTA B2**
Pianta WBS. 28-a PT3

IDENTIFICAZIONE ELABORATO				CONTRAENTE GENERALE			
FASE PROGETTUALE	WBS	TRATTA	OPERA	PEDELOMBARDA NUOVA S.c.p.A.			
AMBITO	AMB B2	CATEGORIA	OPERA	DATA	REVISIONE	ELABORAZIONE PROGETTUALE	
PROGETTISTI	RESPONSABILE		PROGETTISTA	31/08/2023	31/08/2023	A00	Ena Via A. S.r.l.
REDAZIONE	VISTO		APPROVATO	Ing. Marco Mangano			
CONCEDENTE	CONCESSIONARIO		PROGETTISTA	PROGER			