

2 Sezione WBS 47 PT3

1 : 200

Abaco Coordinate di Tracciamento - Opere...		
PUNTO n.	E	N

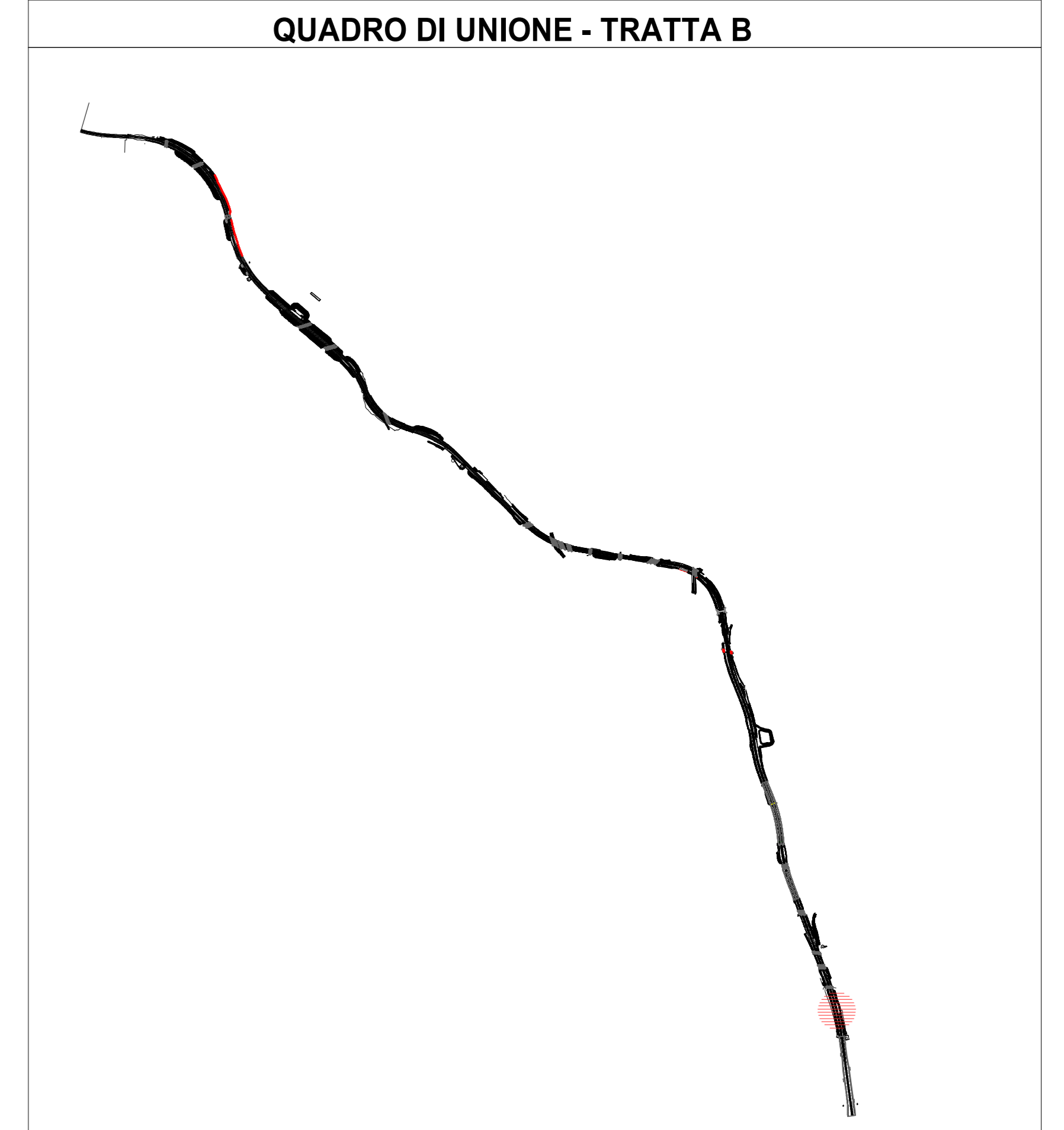
M.01	147191.269813	239760.117191
M.02	147192.573615	239757.415321
M.03	147188.675201	239765.527161
M.04	147189.966011	239762.819061
M.05	147185.781038	239774.014399
M.06	147186.582672	239771.125170
M.07	147187.384809	239768.234396
M.08	147184.057337	239779.763169
M.09	147184.918936	239776.889557
M.10	147182.311449	239785.503542
M.11	147183.184393	239782.633355
M.12	147180.447588	239791.206700
M.13	147181.379519	239788.355121
M.14	147178.704458	239796.947911
M.15	147179.576023	239794.077306
M.16	147176.950228	239802.685739
M.17	147177.827343	239799.816825
M.18	147175.094217	239808.397864
M.19	147176.021268	239805.544694
M.20	147173.240115	239814.104203
M.21	147174.167166	239811.251033
M.22	147171.386013	239819.810542
M.23	147172.313064	239816.957372
M.24	147169.531911	239825.516881
M.25	147170.458962	239822.663711
M.26	147167.578502	239831.189992
M.27	147168.555206	239828.353437
M.28	147165.625093	239836.863104
M.29	147166.601797	239834.026548
M.30	147100.835371	240022.764397
M.31	147101.892699	240019.956898
M.32	147102.950027	240017.149398

Abaco Coordinate di Tracciamento - Opere...		
PUNTO n.	E	N

M.33	147104.007355	240014.341898
M.34	147105.064683	240011.534399
M.35	147106.122011	240008.726899
M.36	147107.172012	240005.916645
M.37	147108.227666	240003.108505
M.38	147109.283317	240000.327177
M.39	147110.338967	239997.492242
M.40	147111.394618	239994.684111
M.41	147112.450268	239991.875979
M.42	147113.505919	239989.067848
M.43	147114.561569	239986.259716
M.44	147115.617220	239983.451585
M.45	147116.672870	239980.643454
M.46	147117.728520	239977.835322
M.47	147118.784171	239975.027191
M.48	147119.839821	239972.219059
M.49	147120.895472	239969.410928
M.50	147121.951122	239966.602796
M.51	147123.006773	239963.794665
M.52	147124.065018	239960.979631
M.53	147125.123451	239958.164097
M.54	147126.179441	239955.356093
M.55	147127.234665	239952.547802
M.56	147128.290655	239949.739798
M.57	147129.345113	239946.931218
M.58	147130.399571	239944.122639
M.59	147131.455441	239941.314590
M.60	147132.509278	239938.505777
M.61	147133.562970	239935.696910
M.62	147134.600770	239932.882548
M.63	147135.650145	239930.020817
M.64	147136.401321	239927.159086

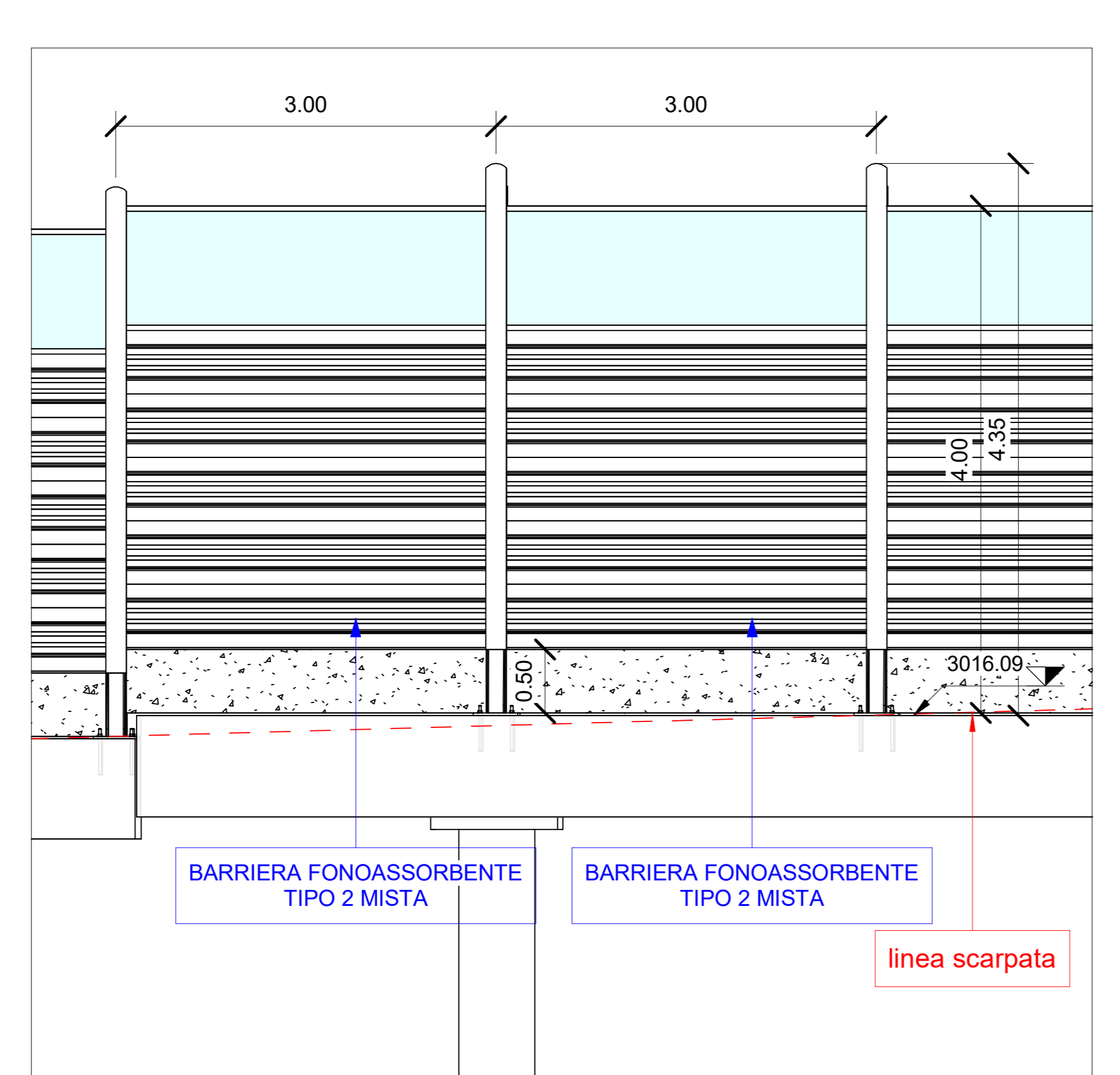
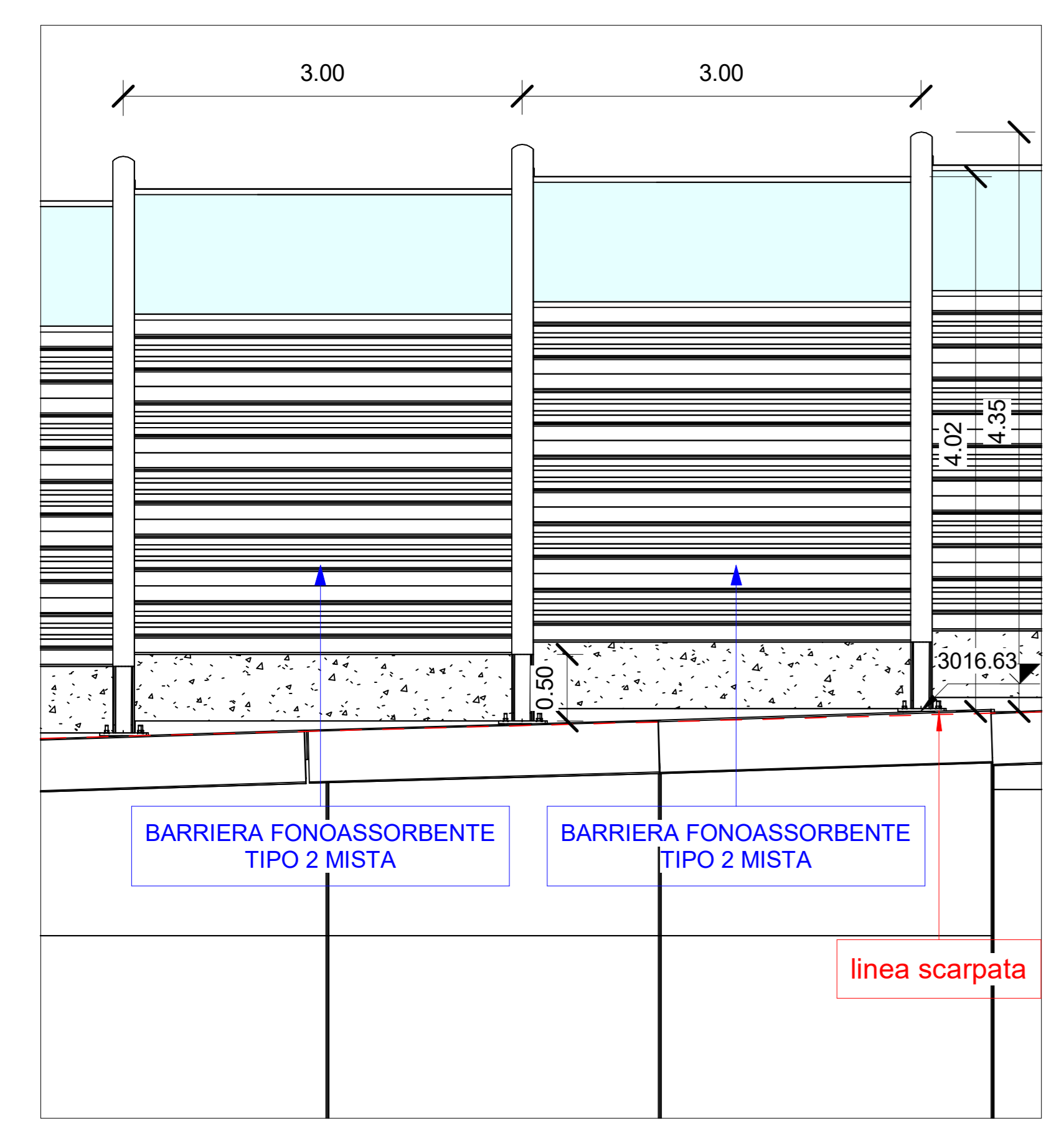
Abaco Coordinate di Tracciamento - Opere...		
PUNTO n.	E	N

M.65	147137.301597	239924.297355
M.66	147138.201873	239921.435625
M.67	147139.102149	239918.573894
M.68	147140.002425	239915.712163
M.69	147140.902701	239912.787692
M.70	147141.802977	239909.988701
M.71	147142.703252	239907.126970
M.72	147143.603528	239904.265240
M.73	147144.503804	239901.403509
M.74	147145.404080	239898.541778
M.75	147146.304356	239895.680047
M.76	147147.204632	239892.818316
M.77	147148.104908	239889.956586
M.78	147149.005184	239887.094855
M.79	147149.905460	239884.233124
M.80	147150.805735	239881.371393
M.81	147151.706011	239878.509662
M.82	147152.606287	239875.647931
M.83	147153.506563	239872.786201
M.84	147154.406839	239869.924470
M.85	147155.307115	239867.062739
M.86	147156.207391	239864.201008
M.87	147157.107667	239861.339277
M.88	147158.111085	239858.512017
M.89	147159.109008	239855.683175
M.90	147160.099621	239852.851125
M.91	147161.090599	239850.019528
M.92	147162.076539	239847.186171
M.93	147163.058662	239844.351489
M.94	147164.045010	239841.518290
M.95	147165.011039	239838.678029



1 LPF - 01 WBS 47 - Callout 3

1 : 200

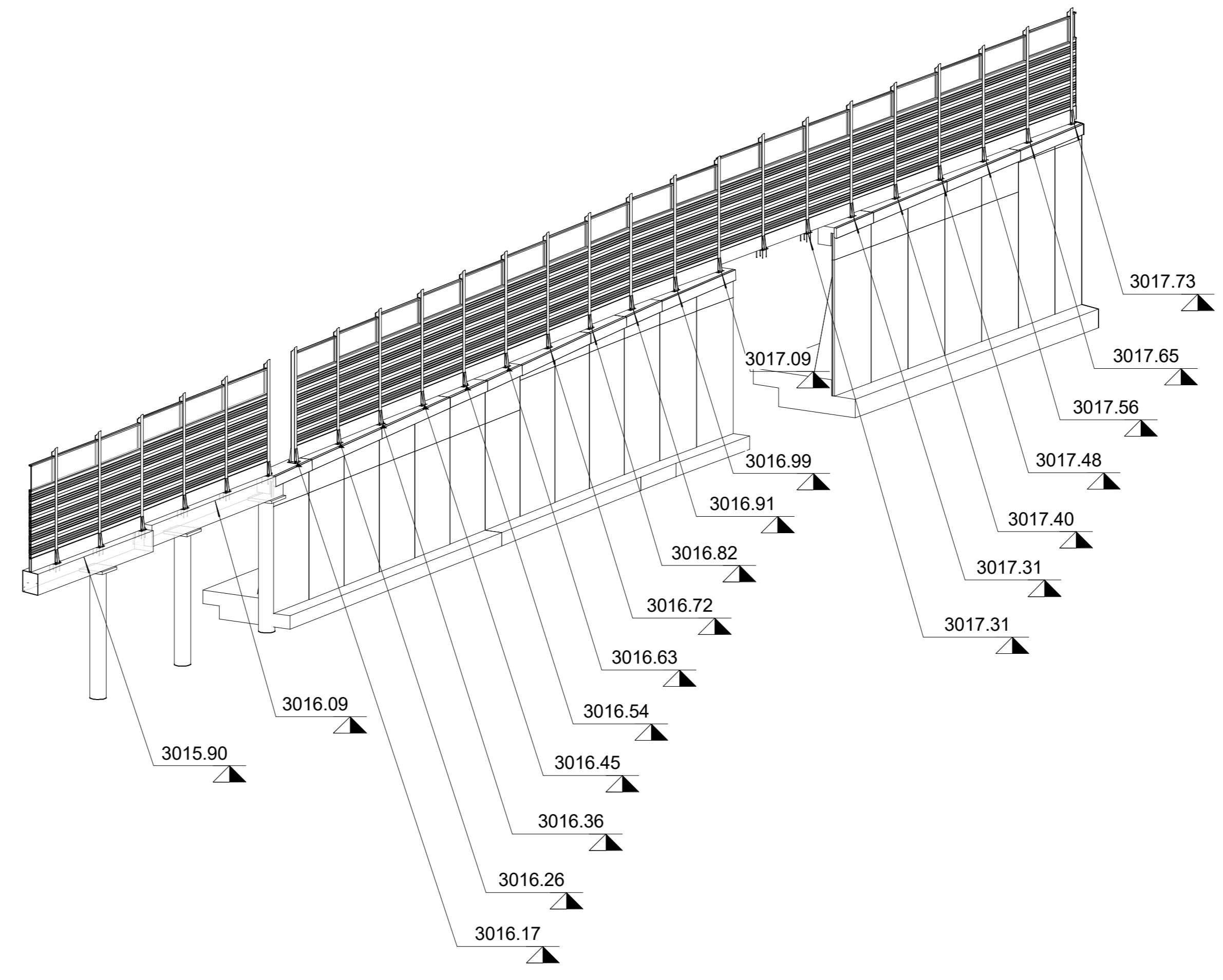


3 Sezione WBS 47 PT3

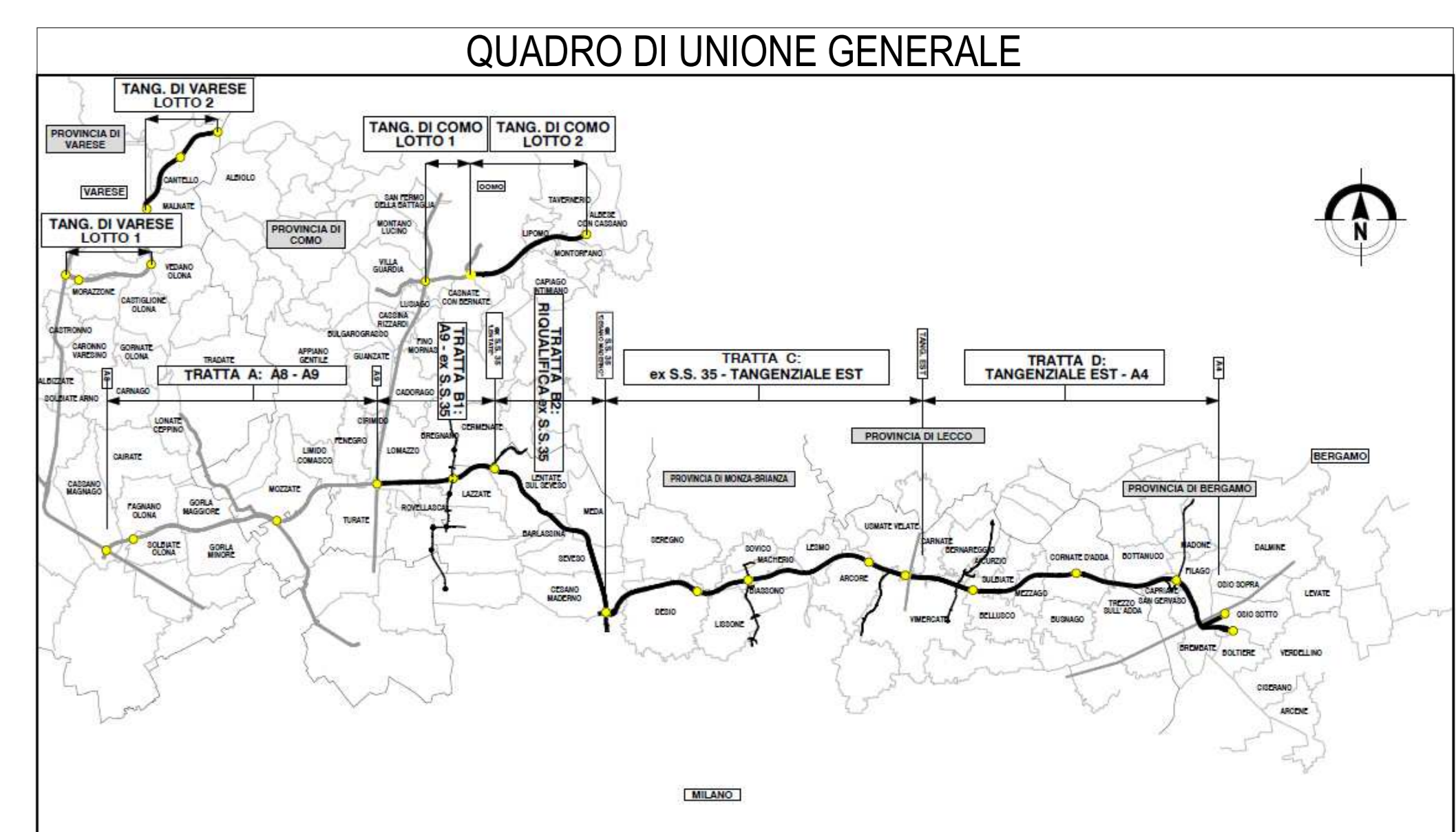
1 : 50

4 Sezione WBS 47 PT3

1 : 50



5 Assonometria WBS 47



**COLLEGAMENTO AUTOSTRADALE
DALMINE-COMO-VARESE-VALICO DEL GAGGIOLE E OPERE AD ESSO CONNESSE**
CODICE C.U.P. F11806027001

**PROGETTO ESECUTIVO
TRATTA C**

IDENTIFICAZIONE ELABORATO		CONTRAENTE GENERALE	
FASE PROGETTUALE	WBS	PEDELOMBARDA NUOVA S.p.A.	
AMBITO	TRATTA	DATA	REVISIONE
CATEGORIA	OPERA	PROGETTISTI: RESPONSABILE Ena.Via A. S.r.l. INTEGRAZIONE PRESTAZIONI SPECIALISTICHE Ing. Carlo Listori	
PARTE DI OPERA	TIPO ELABORATO	CONCESSIONARIO	PROGETTISTA
PROGRESSIVA	REVISIONE ESTERNA	CONCESSIONARI	PROGETTISTI
DATA SCALA CONCEDENTE		CONCESSIONARIO PROGETTISTA	

Il presente documento non potrà essere copiato, riprodotto o altrimenti pubblicato in tutto o in parte senza il consenso scritto di Autostrada Pademontana Lombarda S.p.A. Ogni utilizzo non autorizzato sarà perseguito a norma di legge. This document may not be copied, reproduced or published either in part or entirely without the written permission of Autostrada Pademontana Lombarda S.p.A. Unauthorized use will be prosecuted by law.