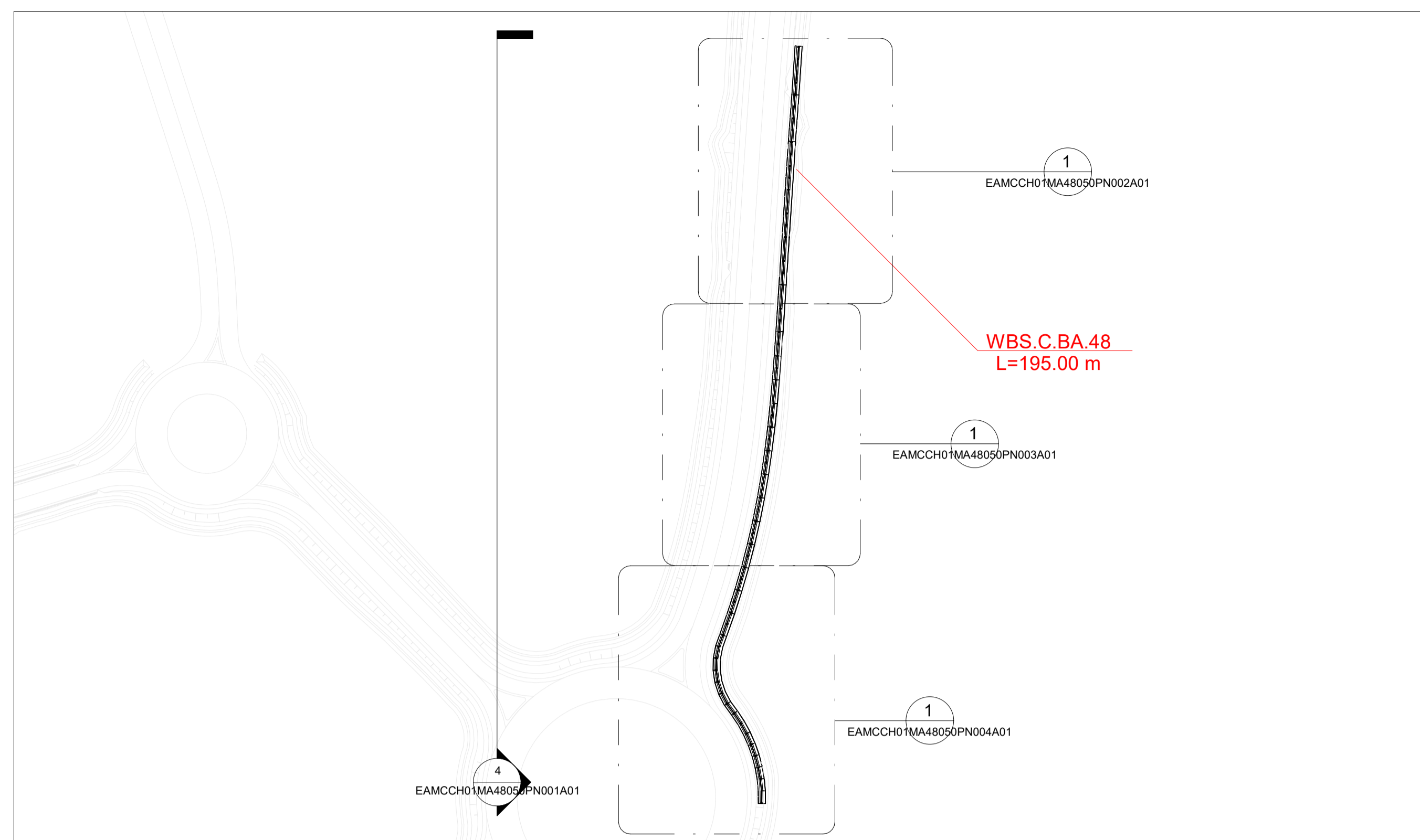
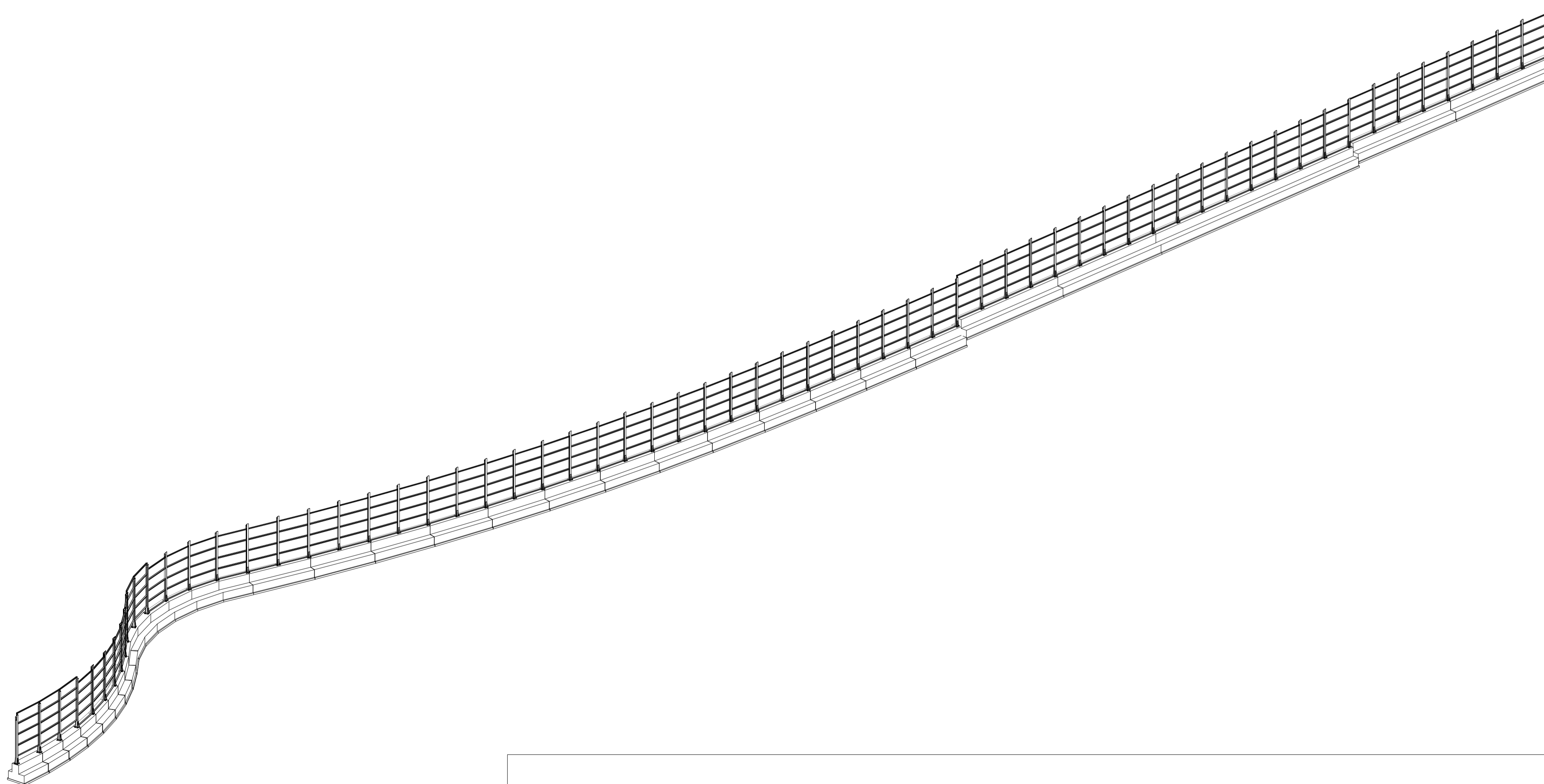


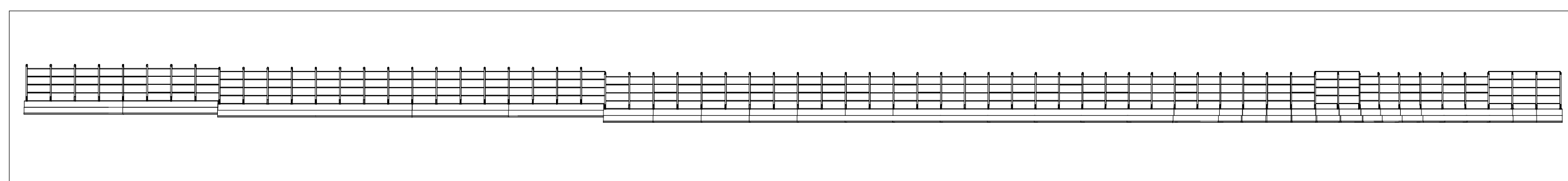
1 Stralcio planimetrico WBS 48
1 : 5000



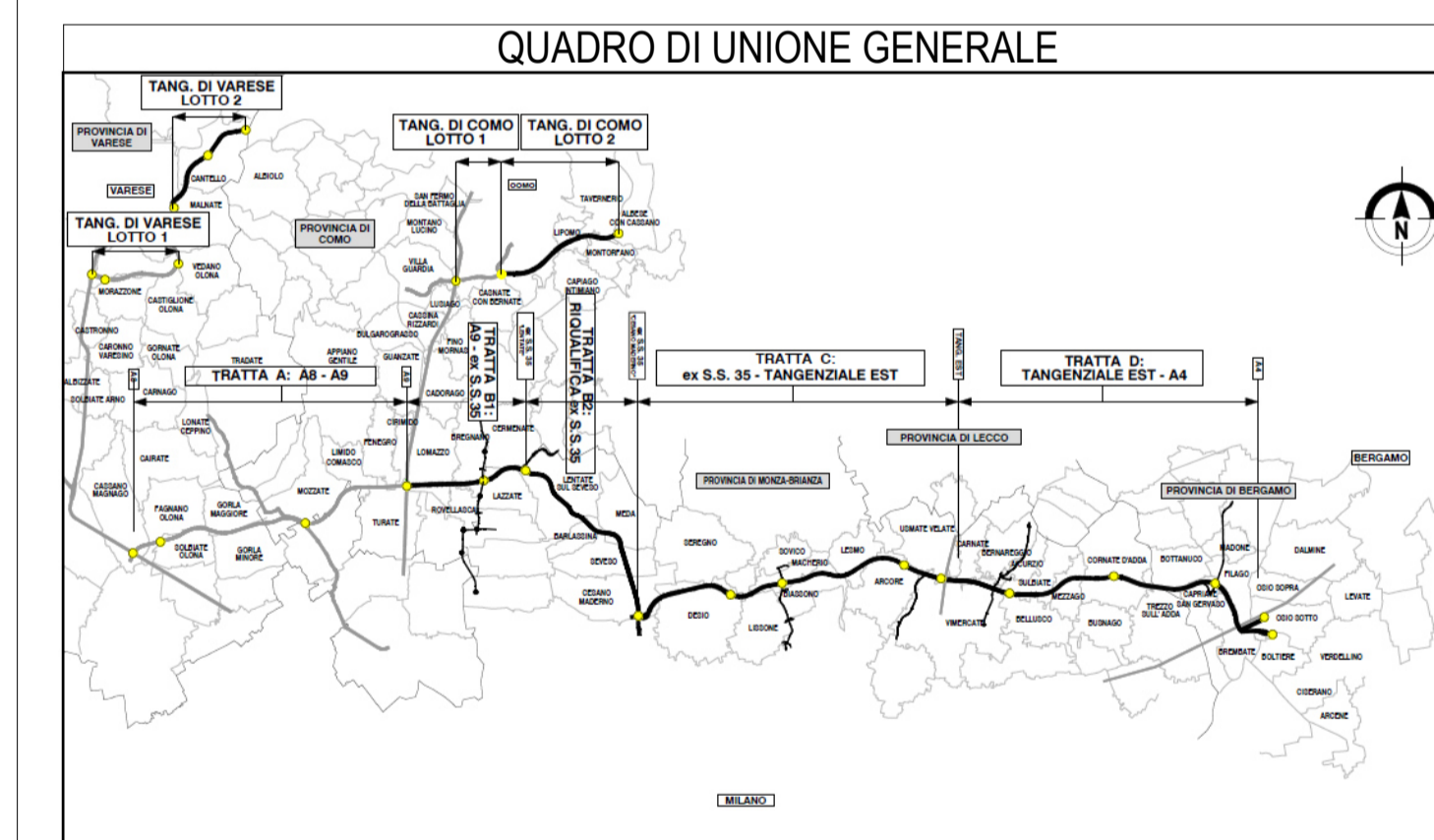
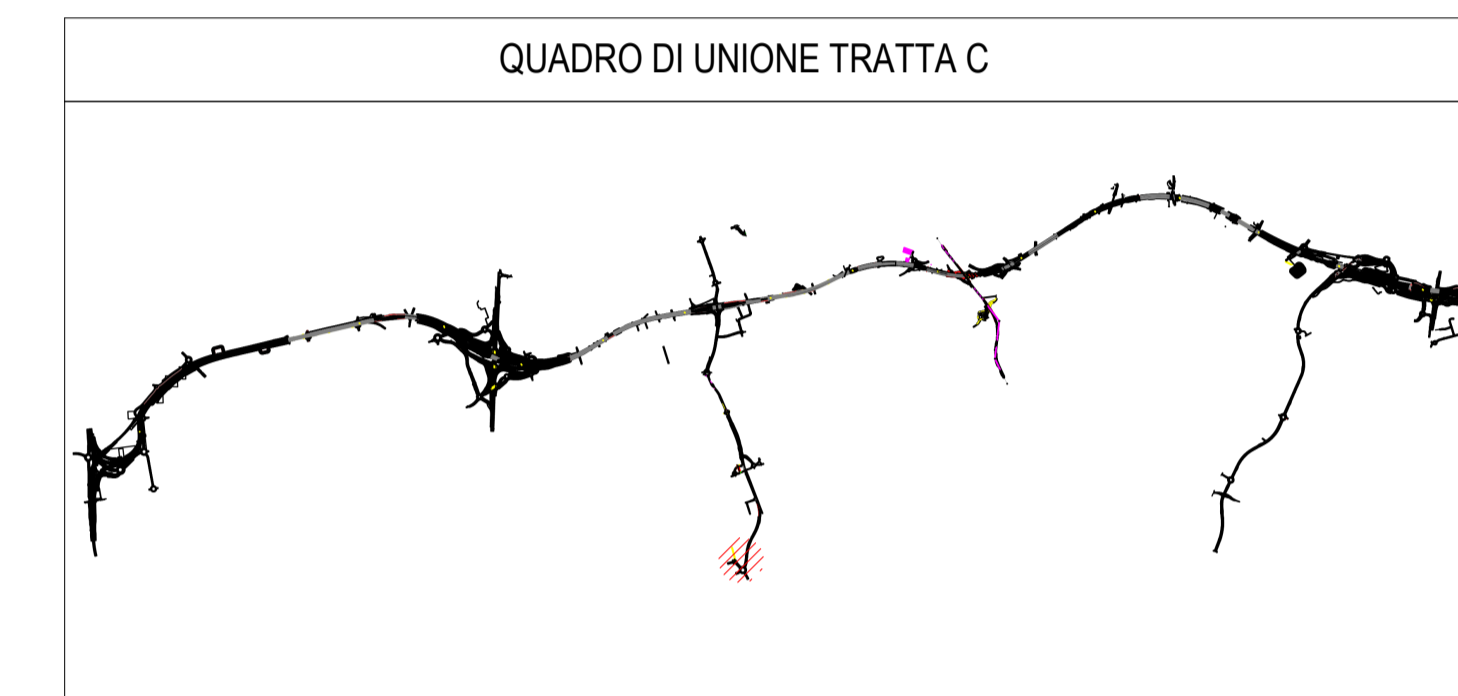
2 Stralcio planimetrico WBS 49
1 : 1000



3 Assonometria WBS 49



4 Sezione WBS 48
1 : 500





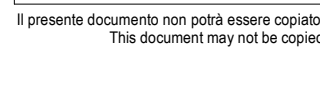
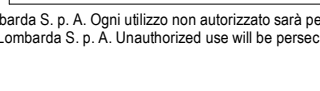



**COLLEGAMENTO AUTOSTRADALE
DALMINE-COMO-VARESE-VALICO DEL GAGGIOLO E OPERE AD ESSO CONNESSE**

CODICE C.U.P. F118060027001

**PROGETTO ESECUTIVO
TRATTA C**

Pianta WBS.C.BA.48

IDENTIFICAZIONE ELABORATO		CONTRAENTE GENERALE	
WBS		PEDELOMBARDA NUOVA S.c.p.A.	
DATA	15/09/2023	REVISIONE	A01
SCALA	As indicated	ELABORAZIONE PROGETTUALE	
CONCEDENTE		PROGETTISTA	
			
			

Il presente documento non potrà essere copiato, riprodotto o altrimenti pubblicato in tutto o in parte senza il consenso scritto di Autorisposta Pedemontana Lombarda S.p.A. Ogni utilizzo non autorizzato sarà perseguito a norma di legge. This document may not be copied, reproduced or published either in part or entirely without the written permission of Autorisposta Pedemontana Lombarda S.p.A. Unauthorized use will be persecuted by law.