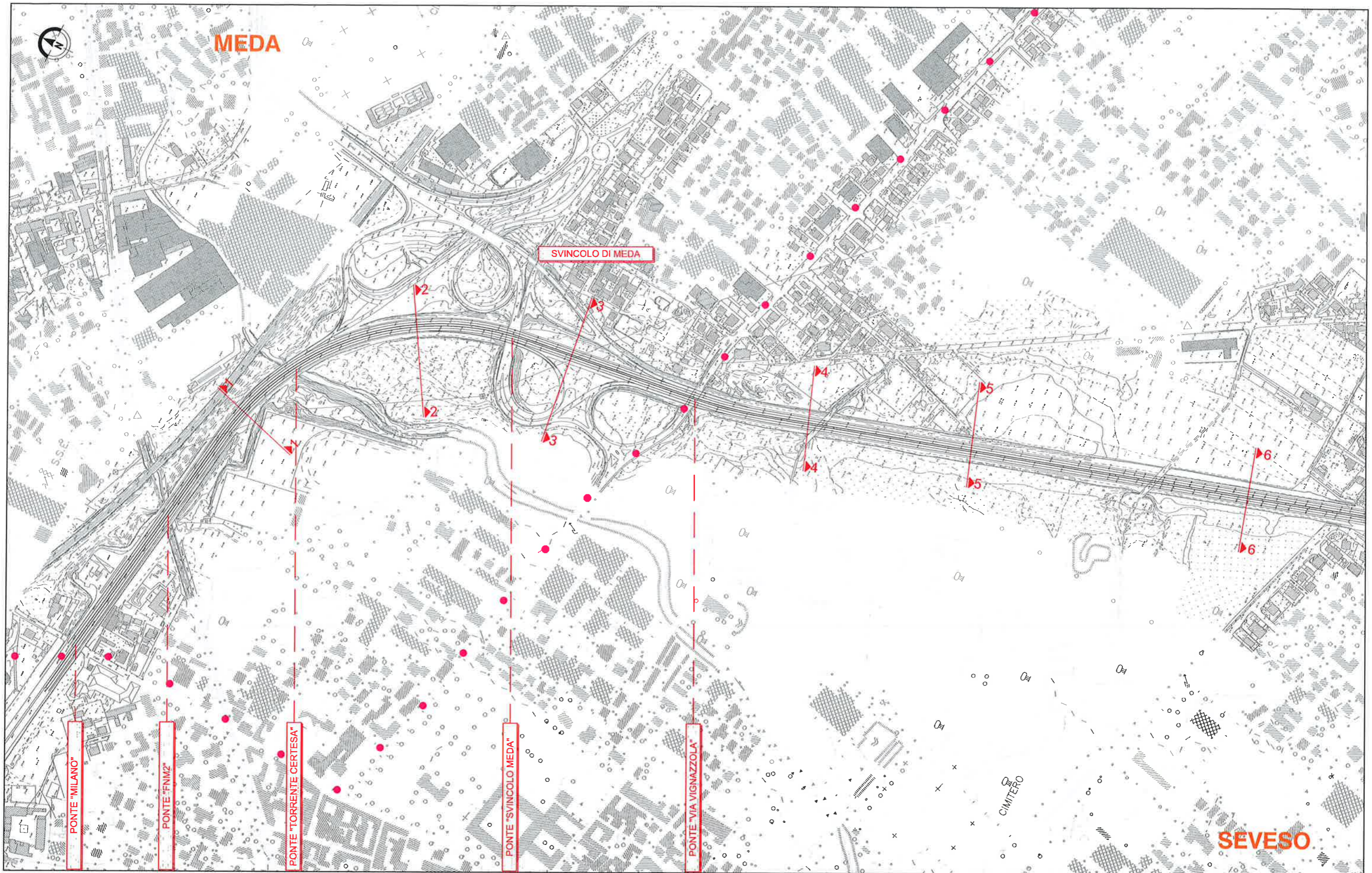


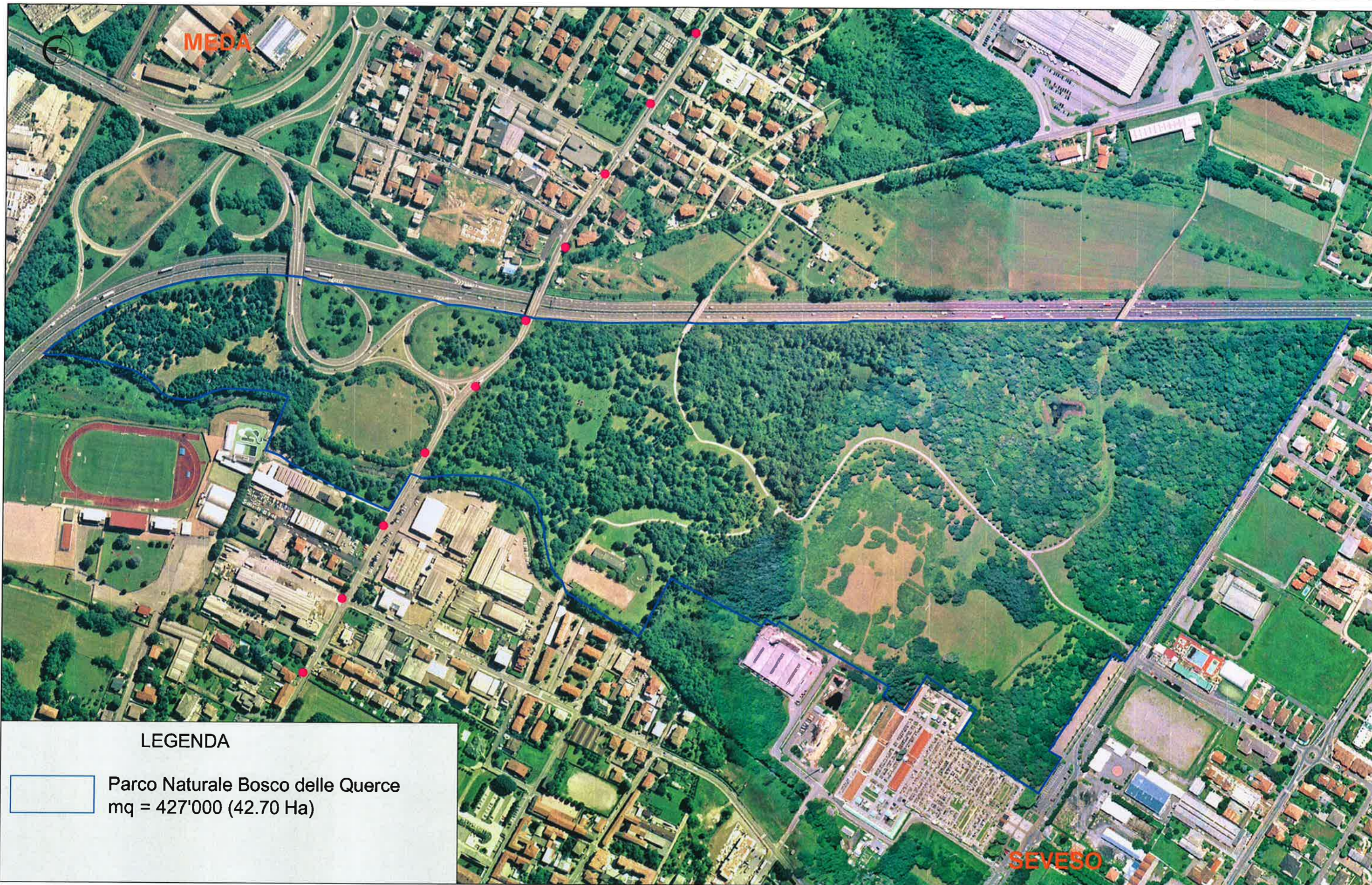


**TRATTA B2**  
**VARIANTE PROGETTO DEFINITIVO REVISIONATO**  
**ALLARGAMENTO IN SEDE**  
**DA PK 5+105,91 A PK 6+887,27**







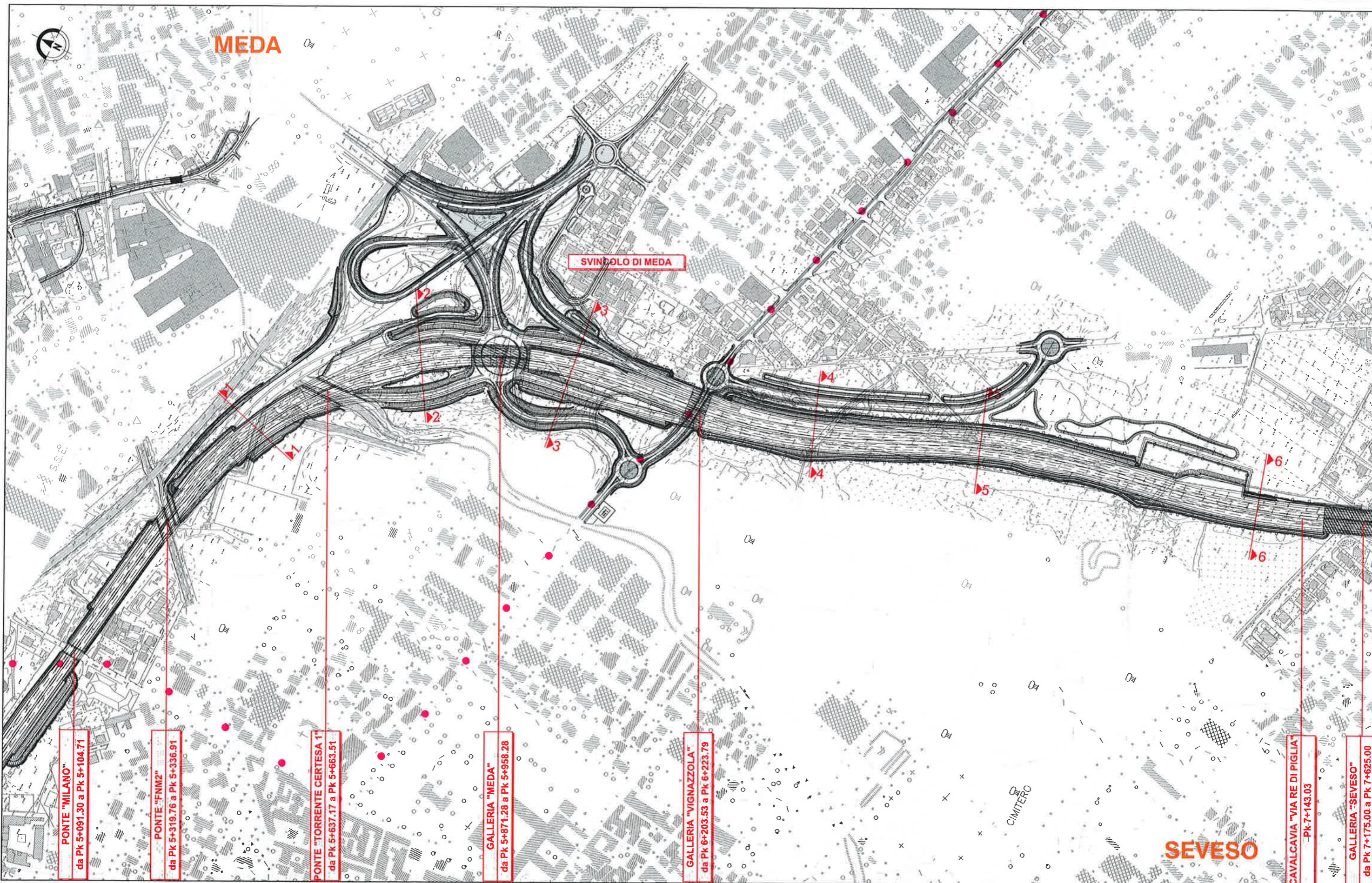


LEGENDA

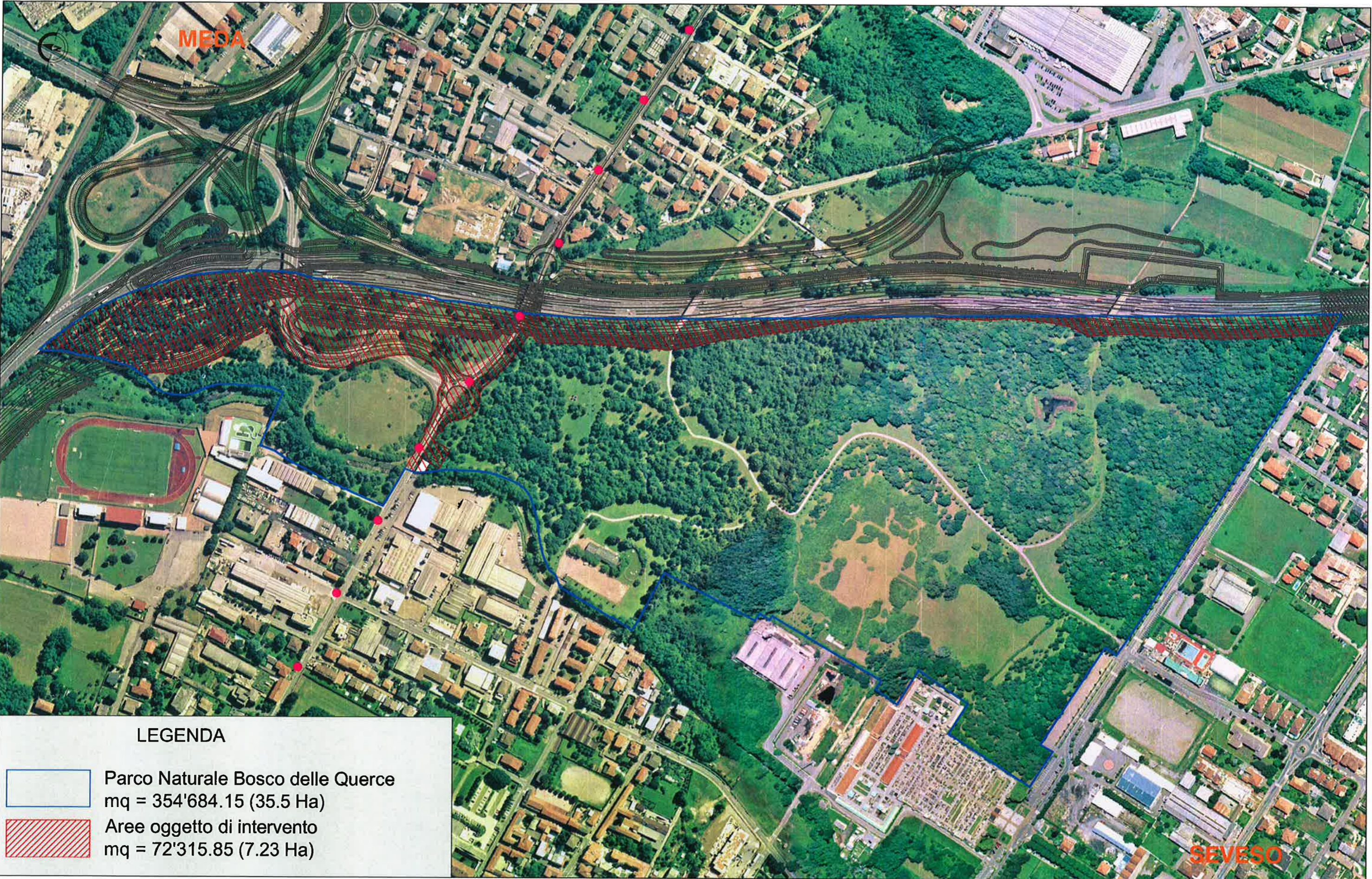


Parco Naturale Bosco delle Querce  
mq = 427'000 (42.70 Ha)







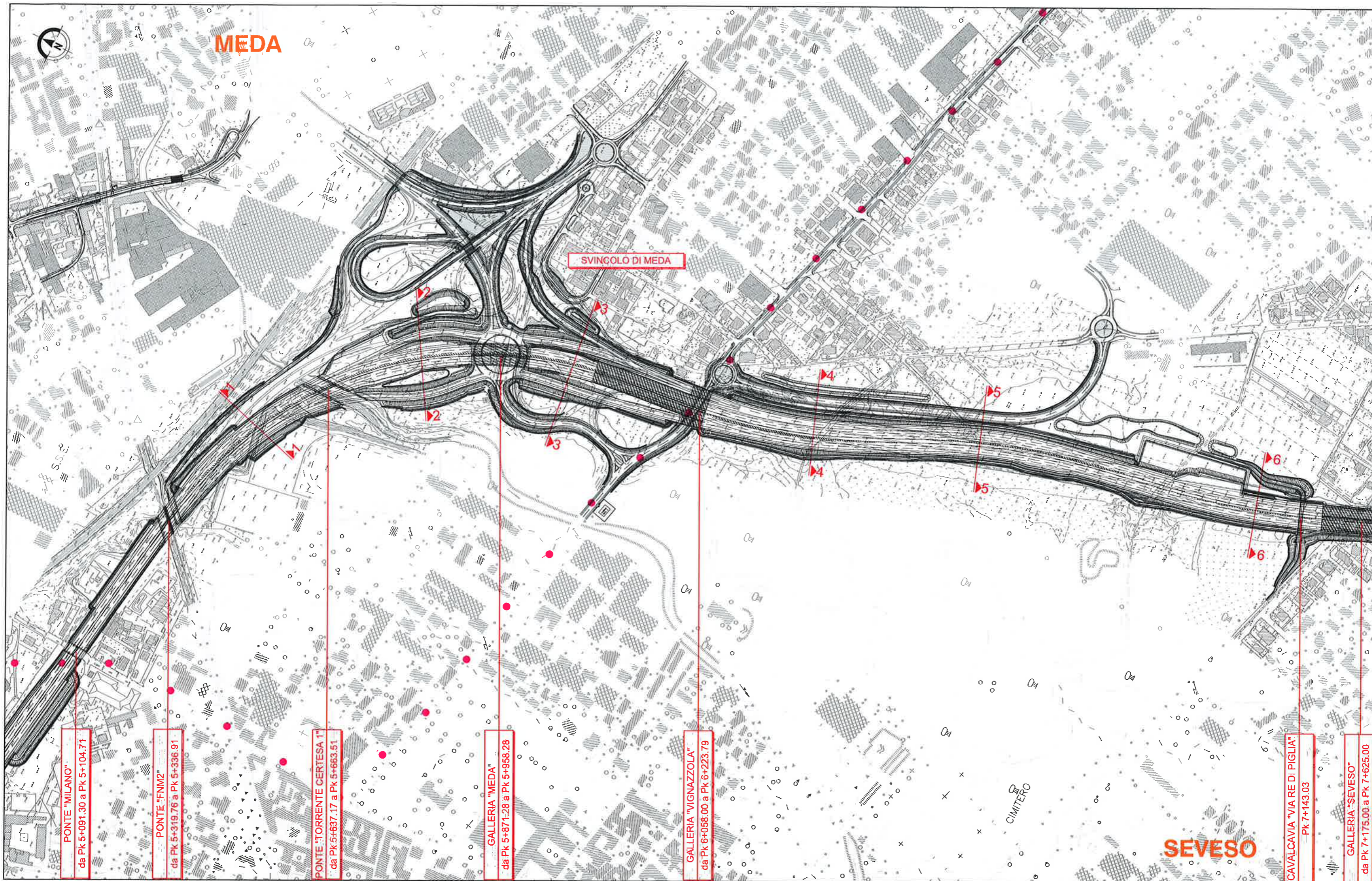


LEGENDA

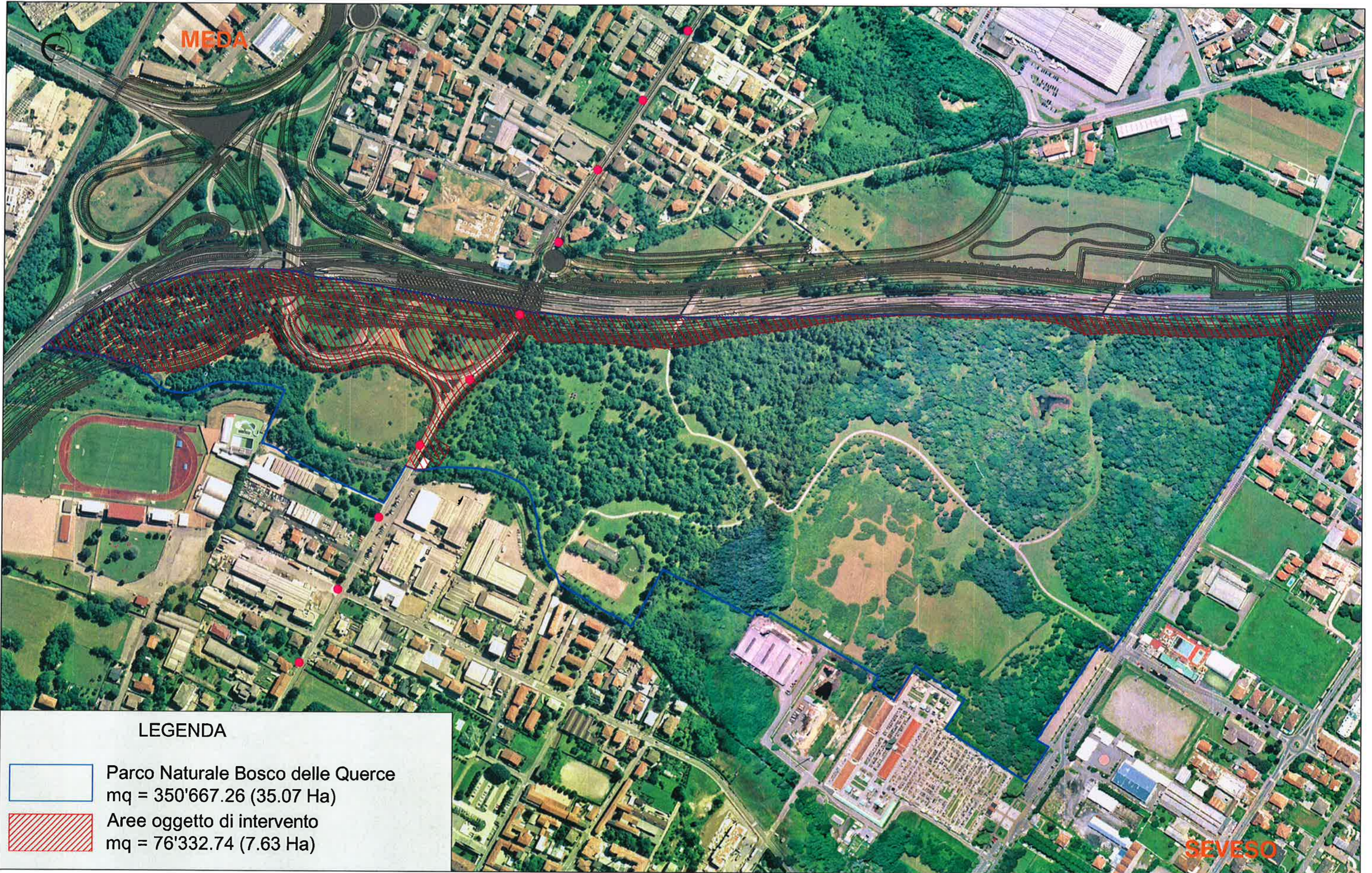


Parco Naturale Bosco delle Querce  
mq = 354'684.15 (35.5 Ha)  
Aree oggetto di intervento  
mq = 72'315.85 (7.23 Ha)

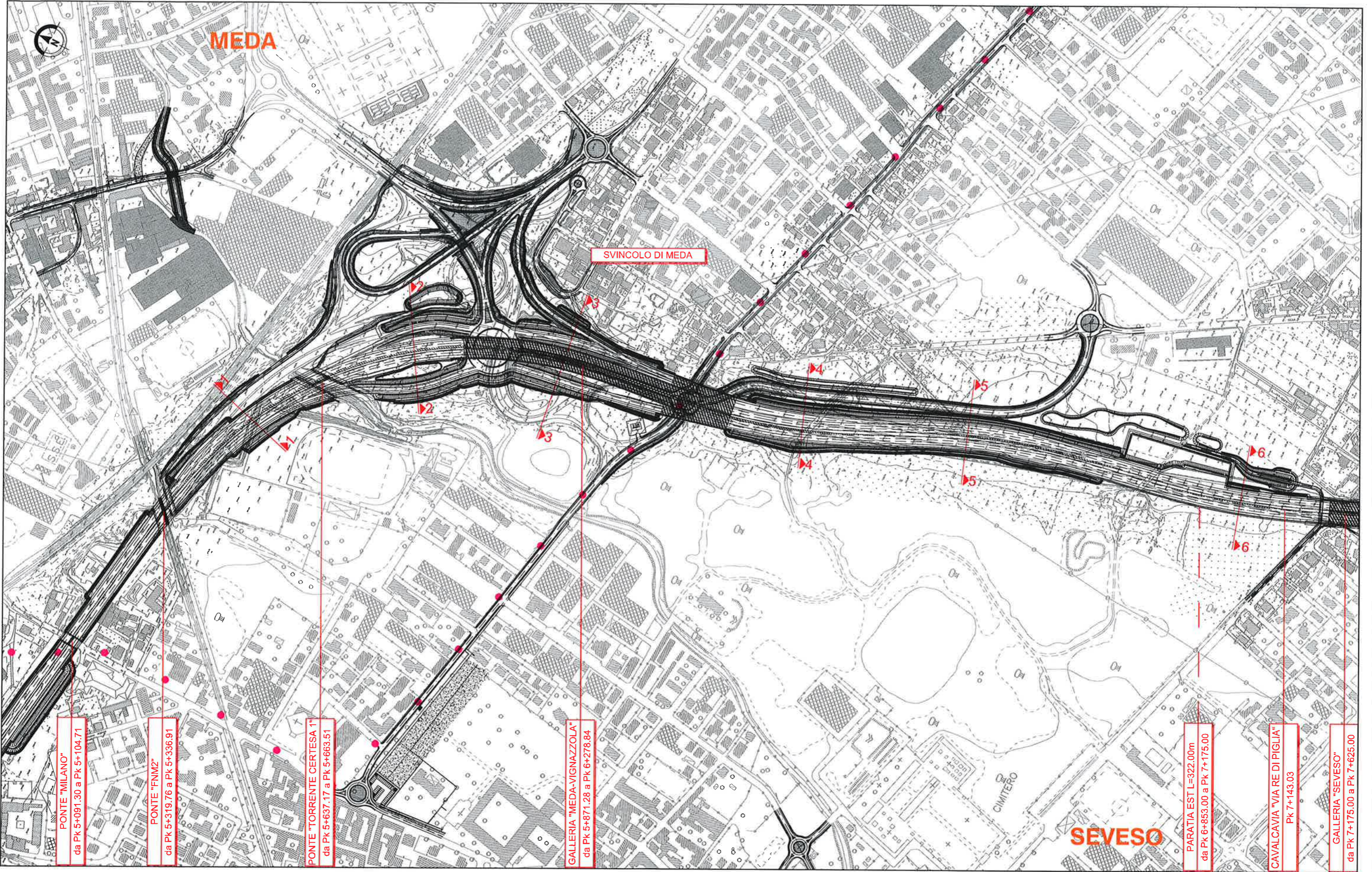












PONTE "MILANO"  
da Pk 5+091.30 a Pk 5+104.71

PONTE "FNM2"  
da Pk 5+319.76 a Pk 5+336.91

PONTE "TORRENTE CERTESA 1"  
da Pk 5+637.17 a Pk 5+663.51

GALLERIA "MEDA-VIGNAZZOLA"  
da Pk 5+871.28 a Pk 6+278.84

PARATIA EST L=322.00m  
da Pk 6+853.00 a Pk 7+175.00



CAVALCAVIA "VIA RE DI PIGLIA"  
Pk 7+143.03

GALLERIA "SEVESO"  
da Pk 7+175.00 a Pk 7+625.00

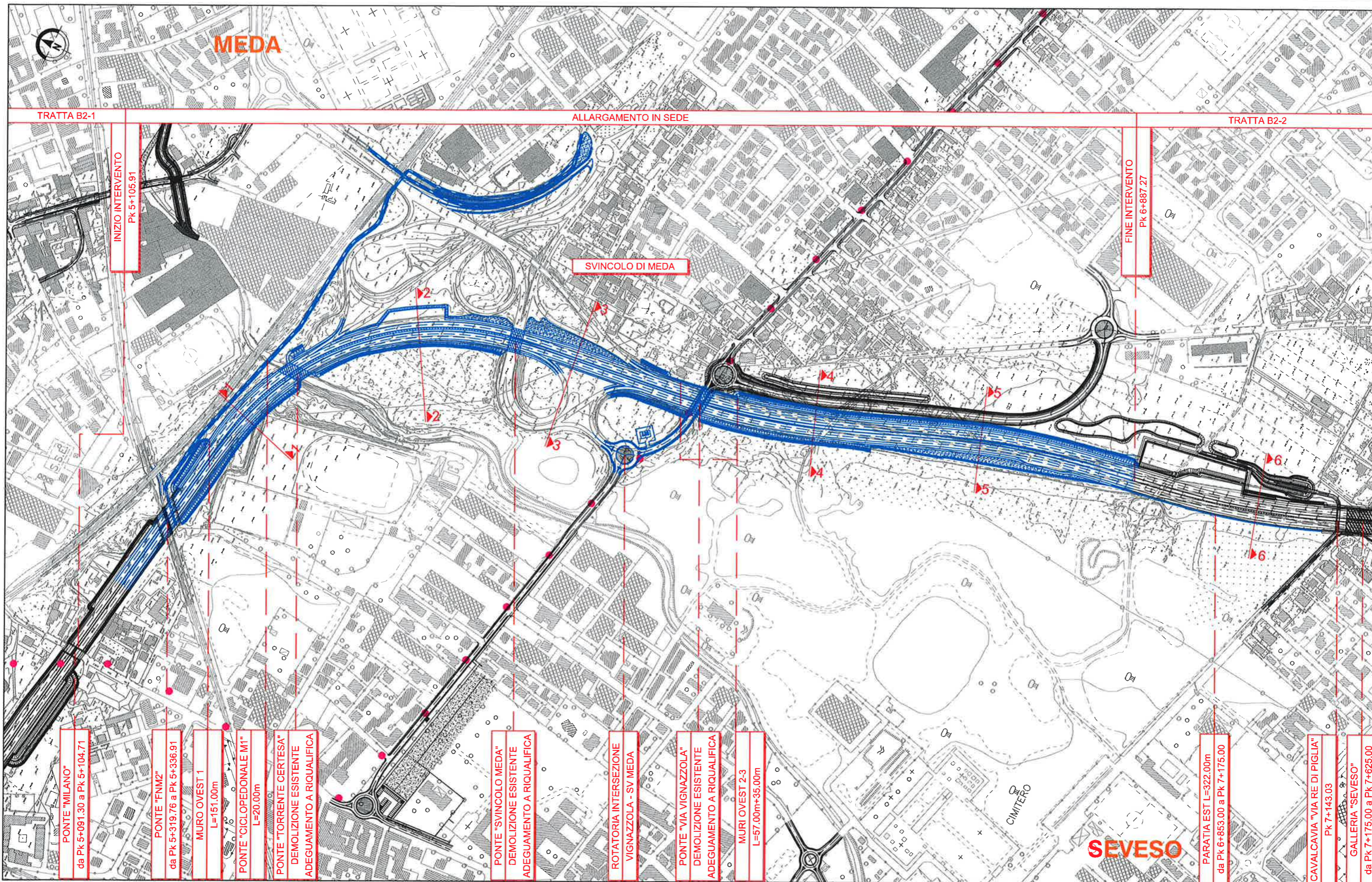




**LEGENDA**

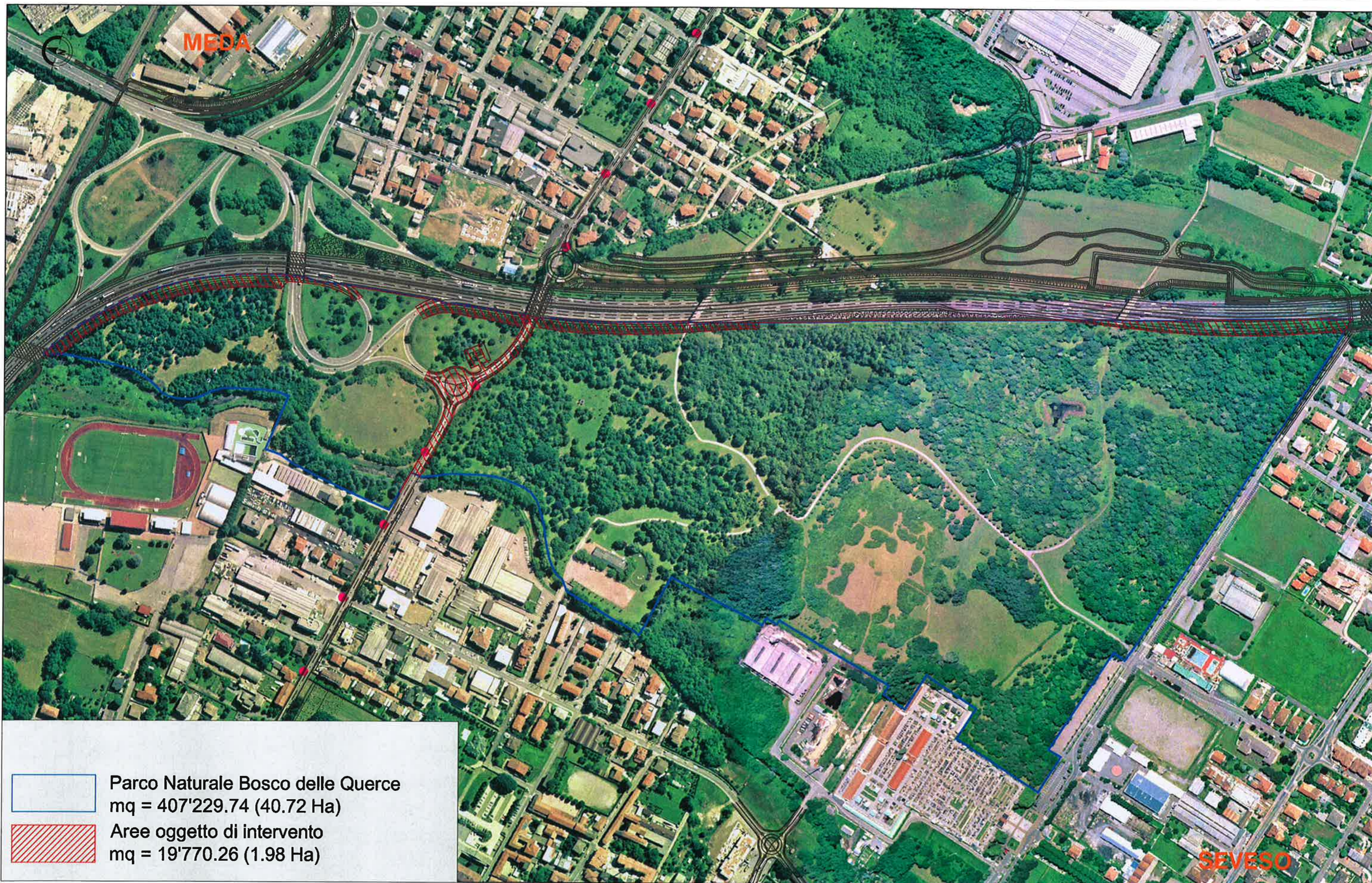
-  Parco Naturale Bosco delle Querce  
mq = 371'275.00 (37.12 Ha)
-  Aree oggetto di intervento  
mq = 55'725.00 (5.57 Ha)



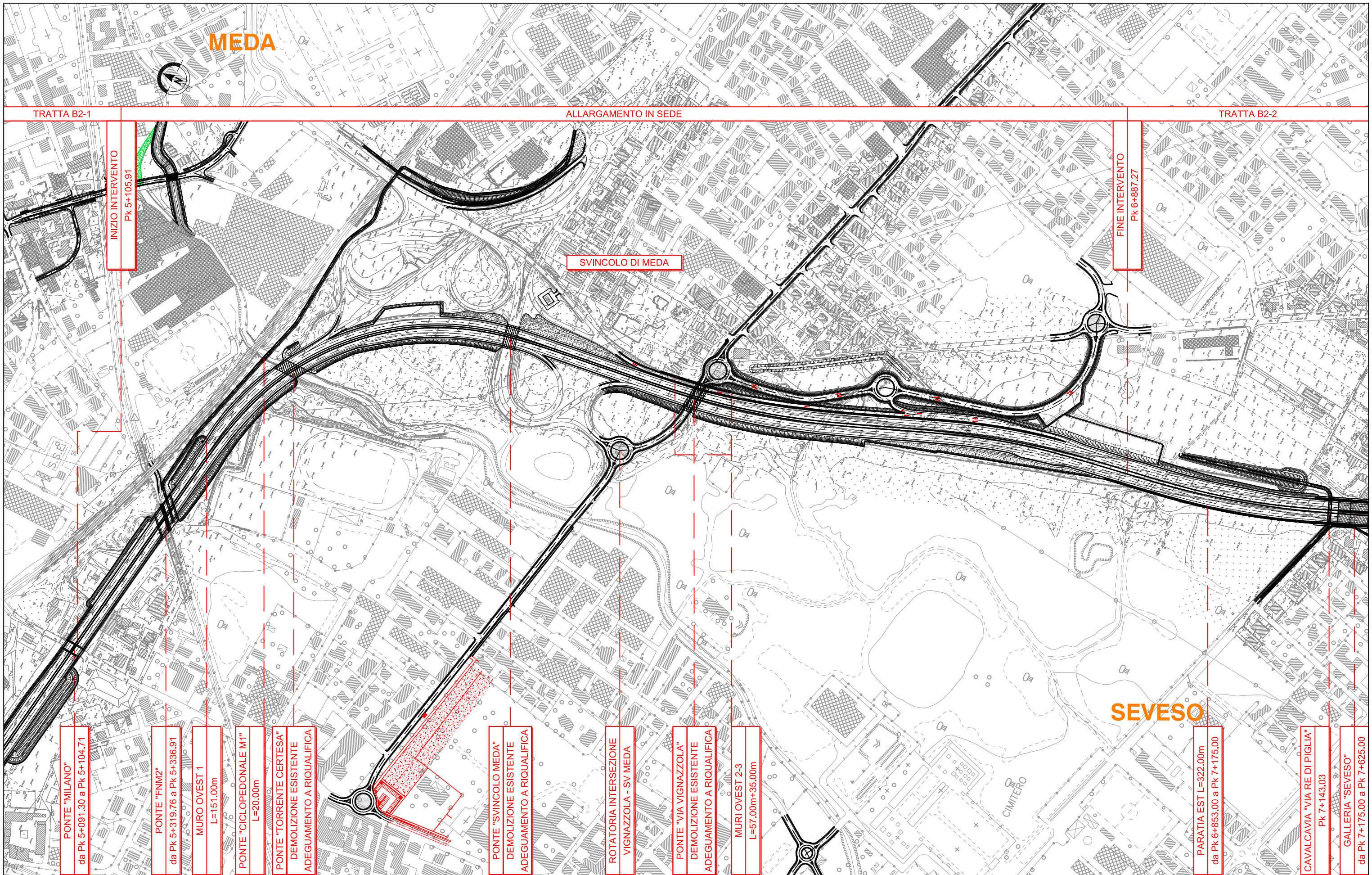




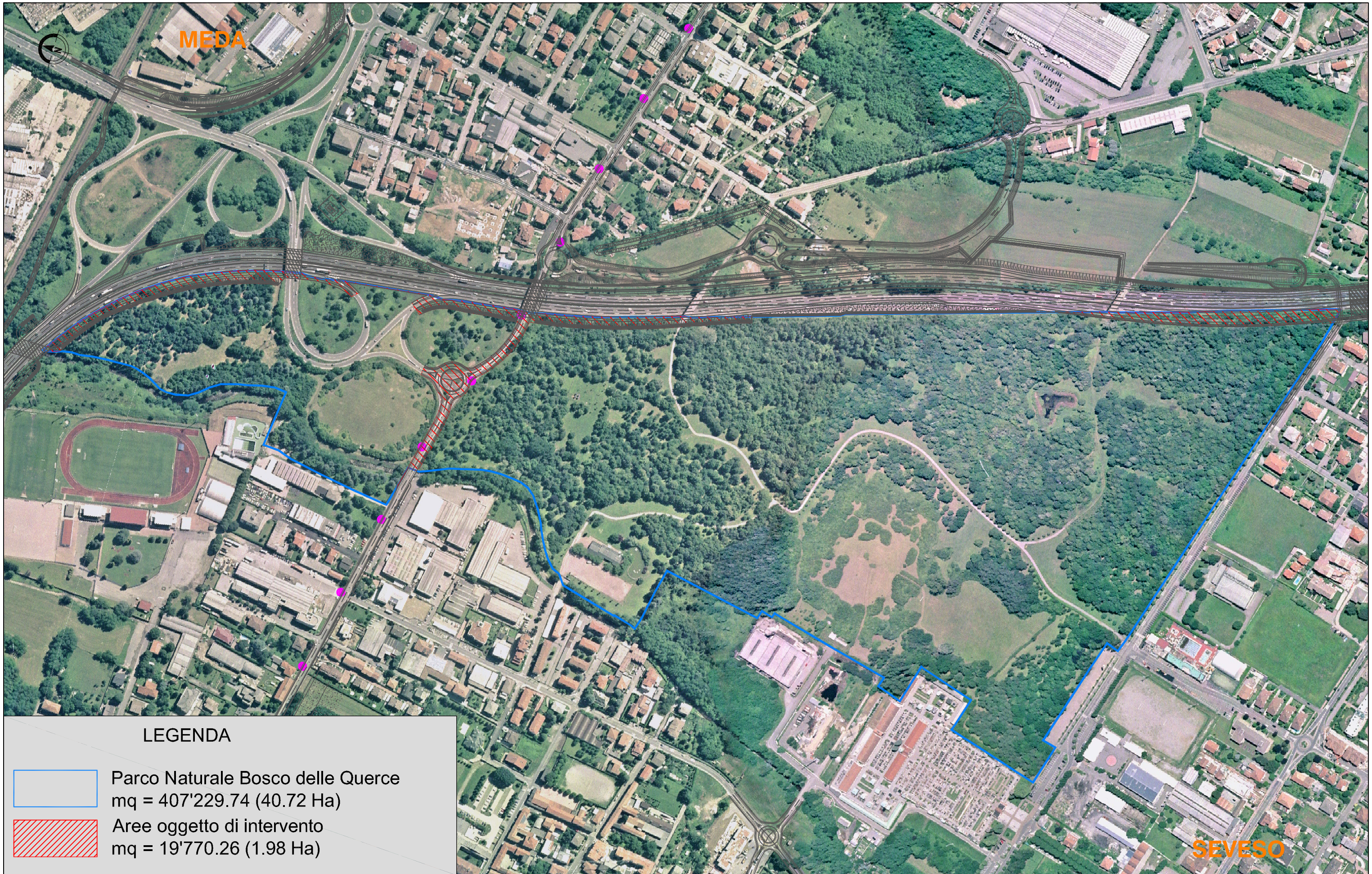
**TRATTA B2**  
**VARIANTE PROGETTO DEFINITIVO REVISIONATO - ALLARGAMENTO IN SEDE DA Pk 5+105,91 A Pk 6+887,27**  
**Fotopiano**



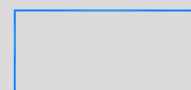





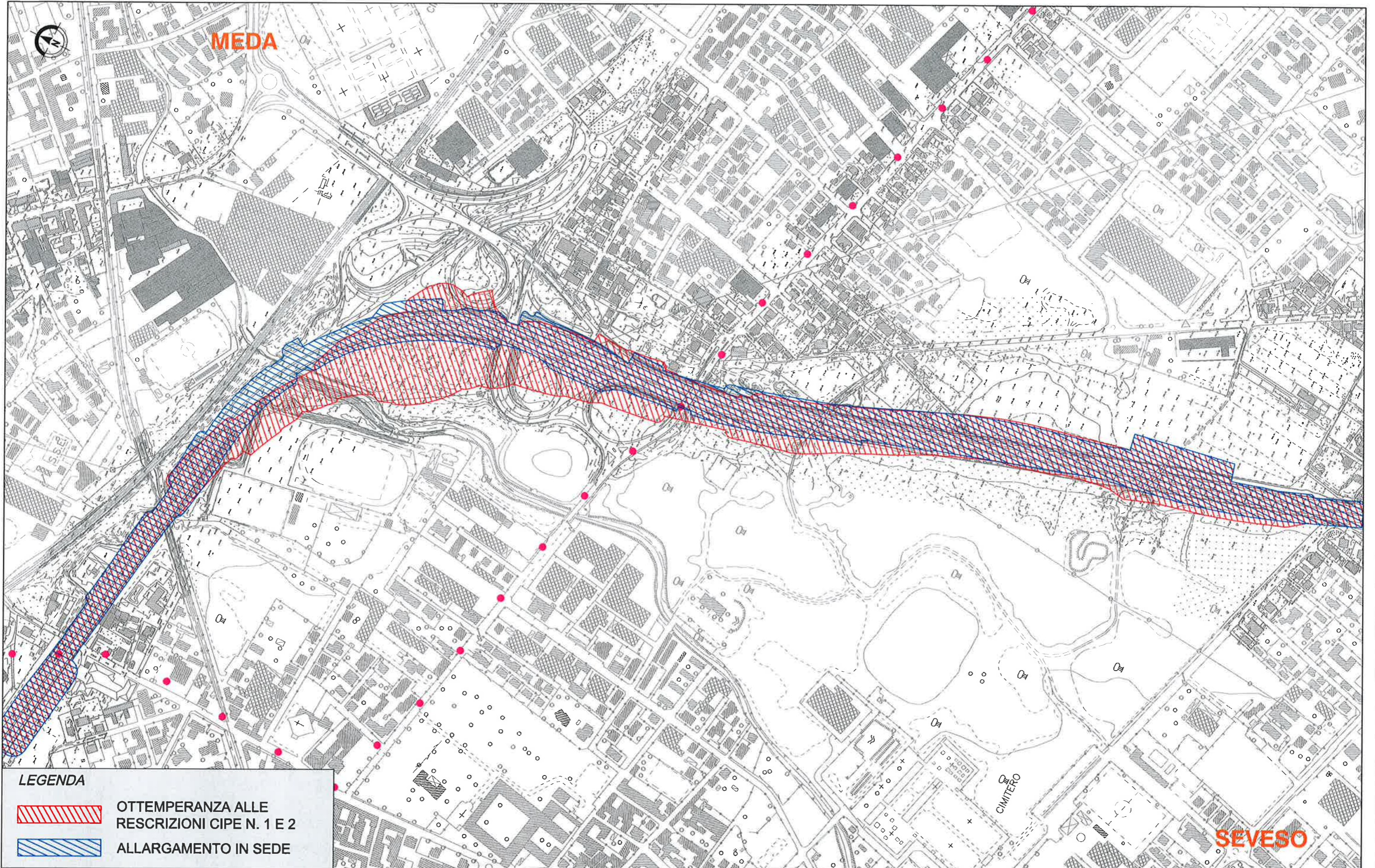




LEGENDA

-  Parco Naturale Bosco delle Querce  
mq = 407'229.74 (40.72 Ha)
-  Aree oggetto di intervento  
mq = 19'770.26 (1.98 Ha)





**LEGENDA**

-  OTTEMPERANZA ALLE RESCRIZIONI CIPE N. 1 E 2
-  ALLARGAMENTO IN SEDE

**SEVESO**