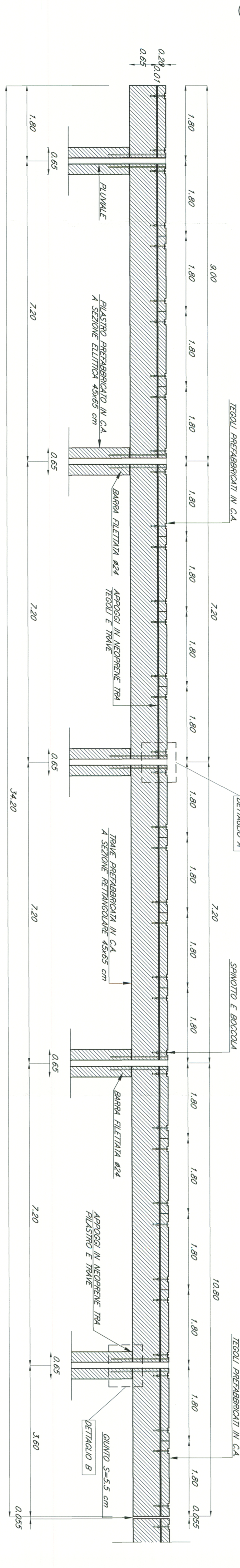
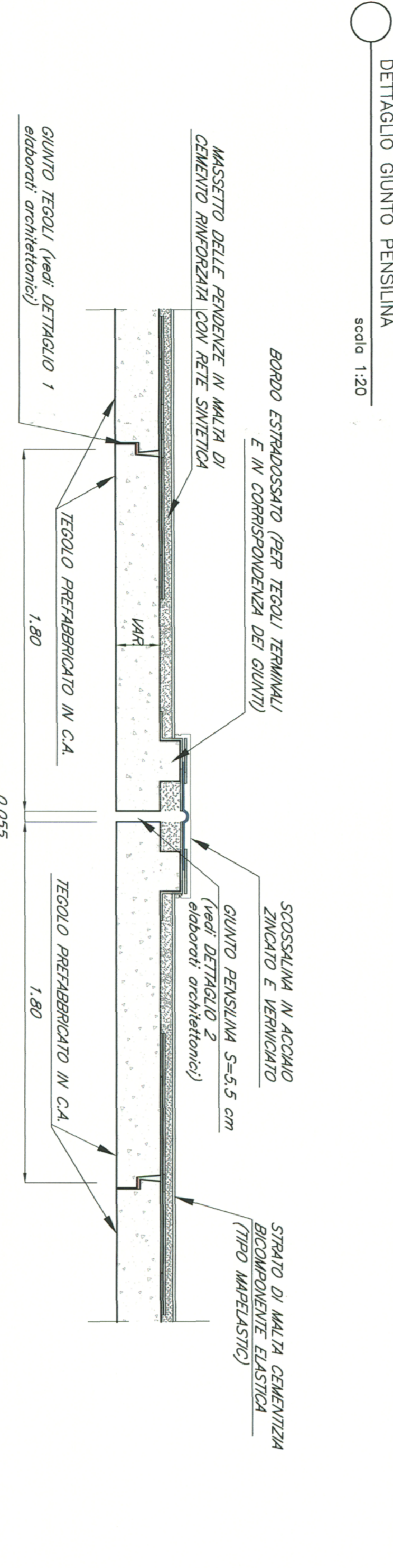


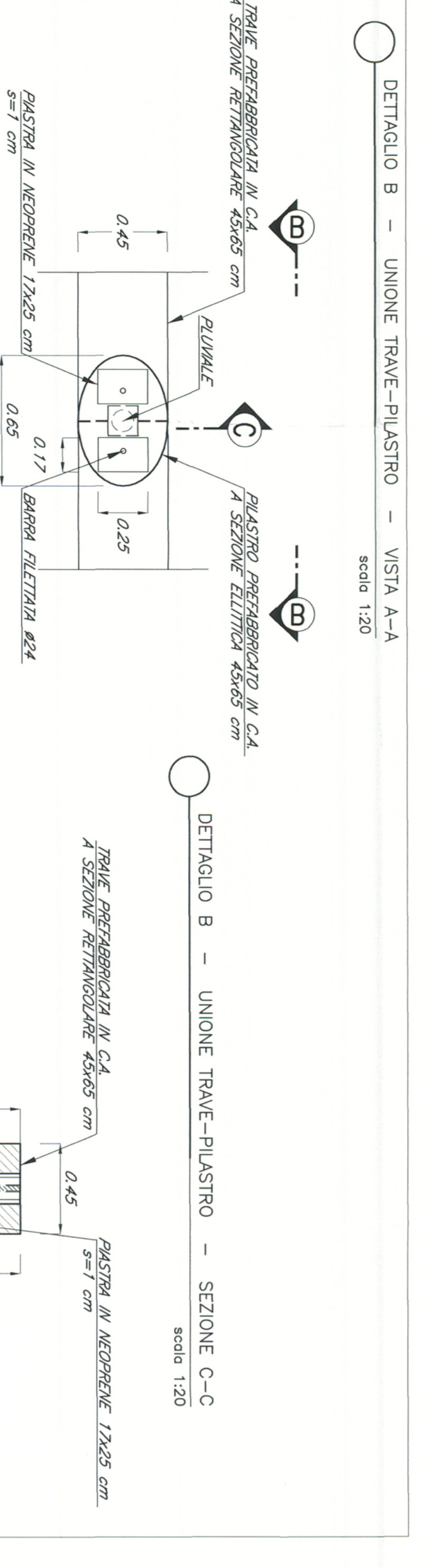
SEZIONE E-E



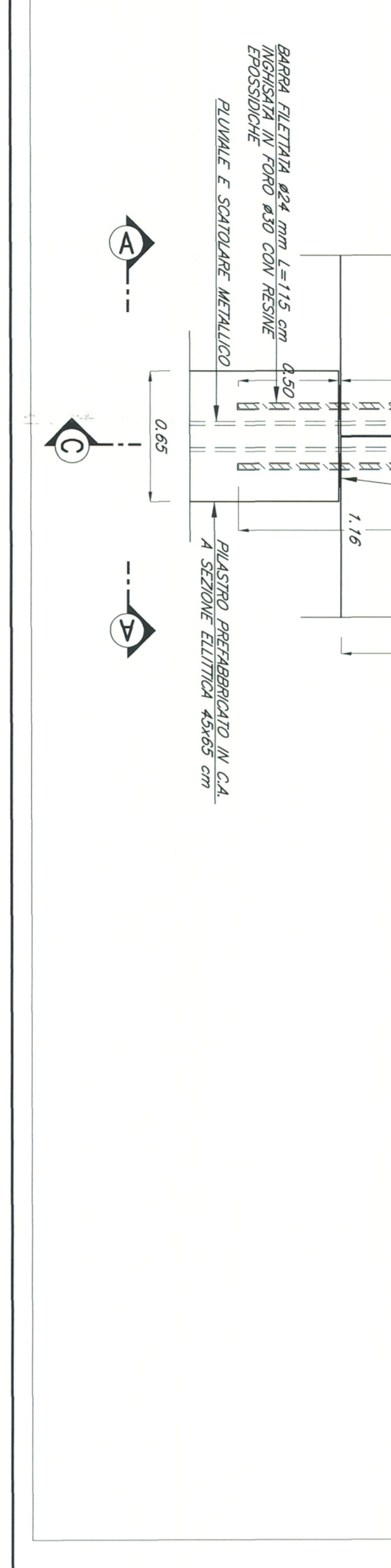
DETAGLIO B - UNIONE TRAVE-PILASTRO



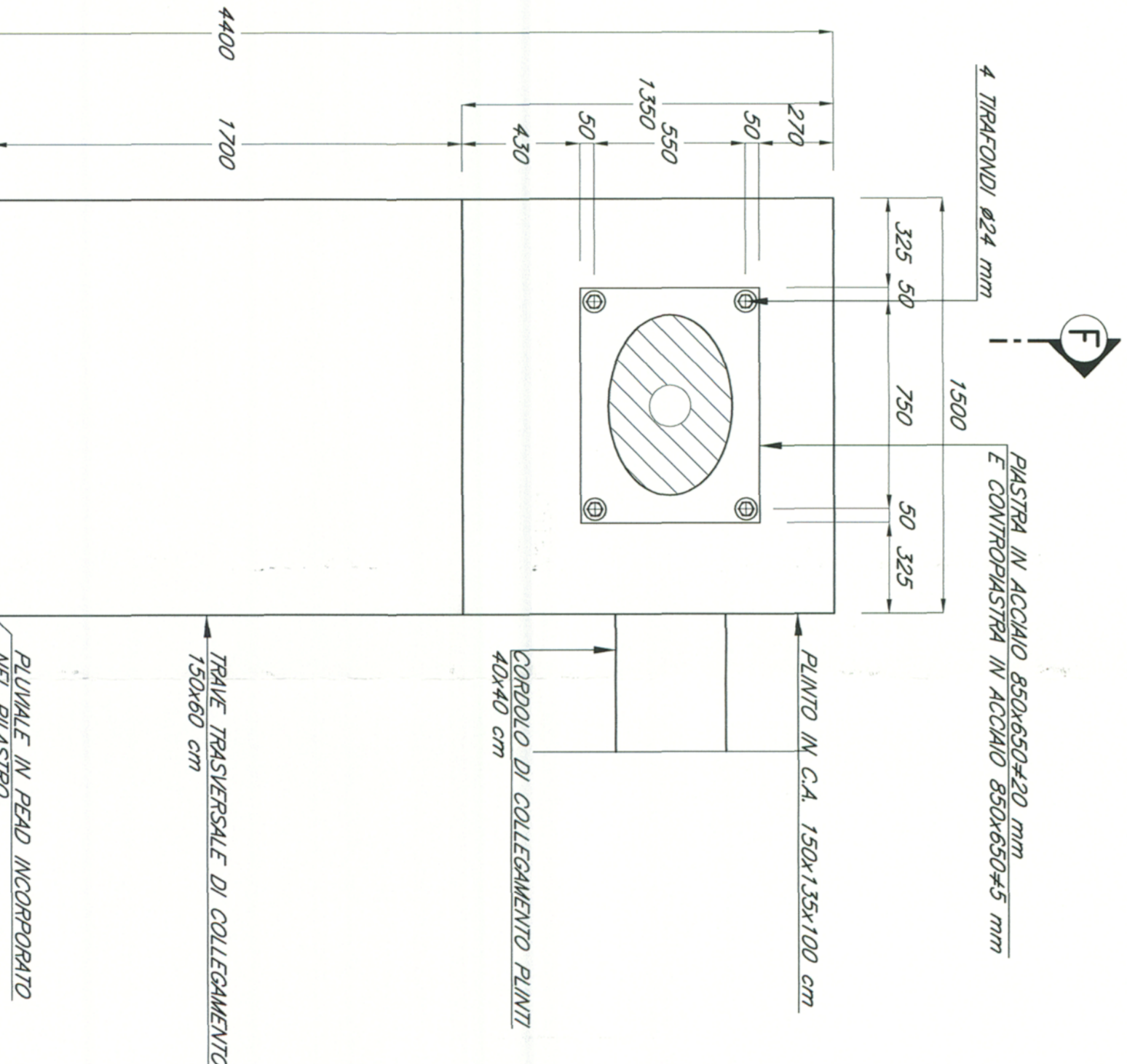
DETAGLIO B - UNIONE TRAVE-PILASTRO - VISTA A-A



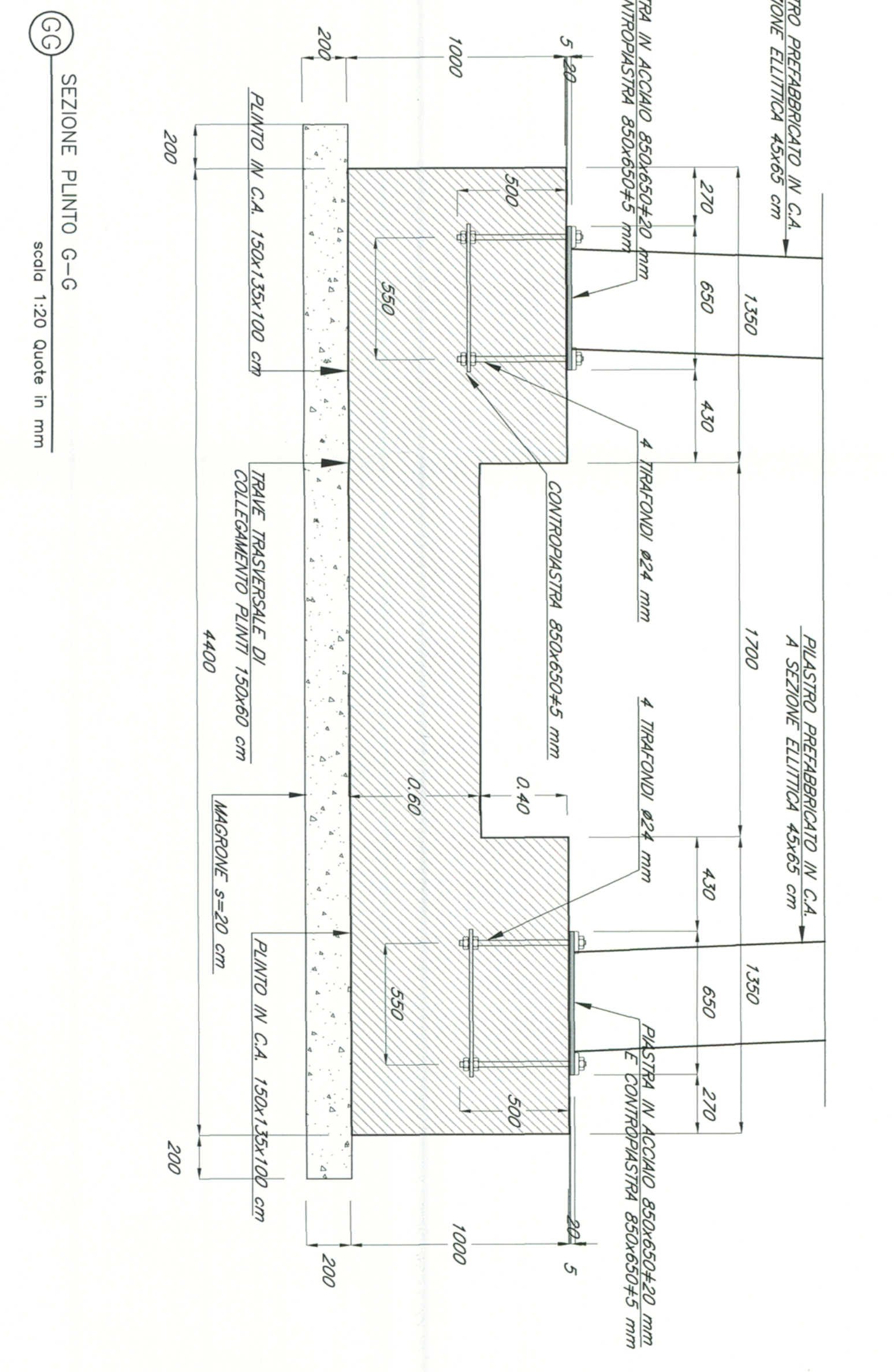
DETAGLIO B - UNIONE TRAVE-PILASTRO - SEZIONE C-C



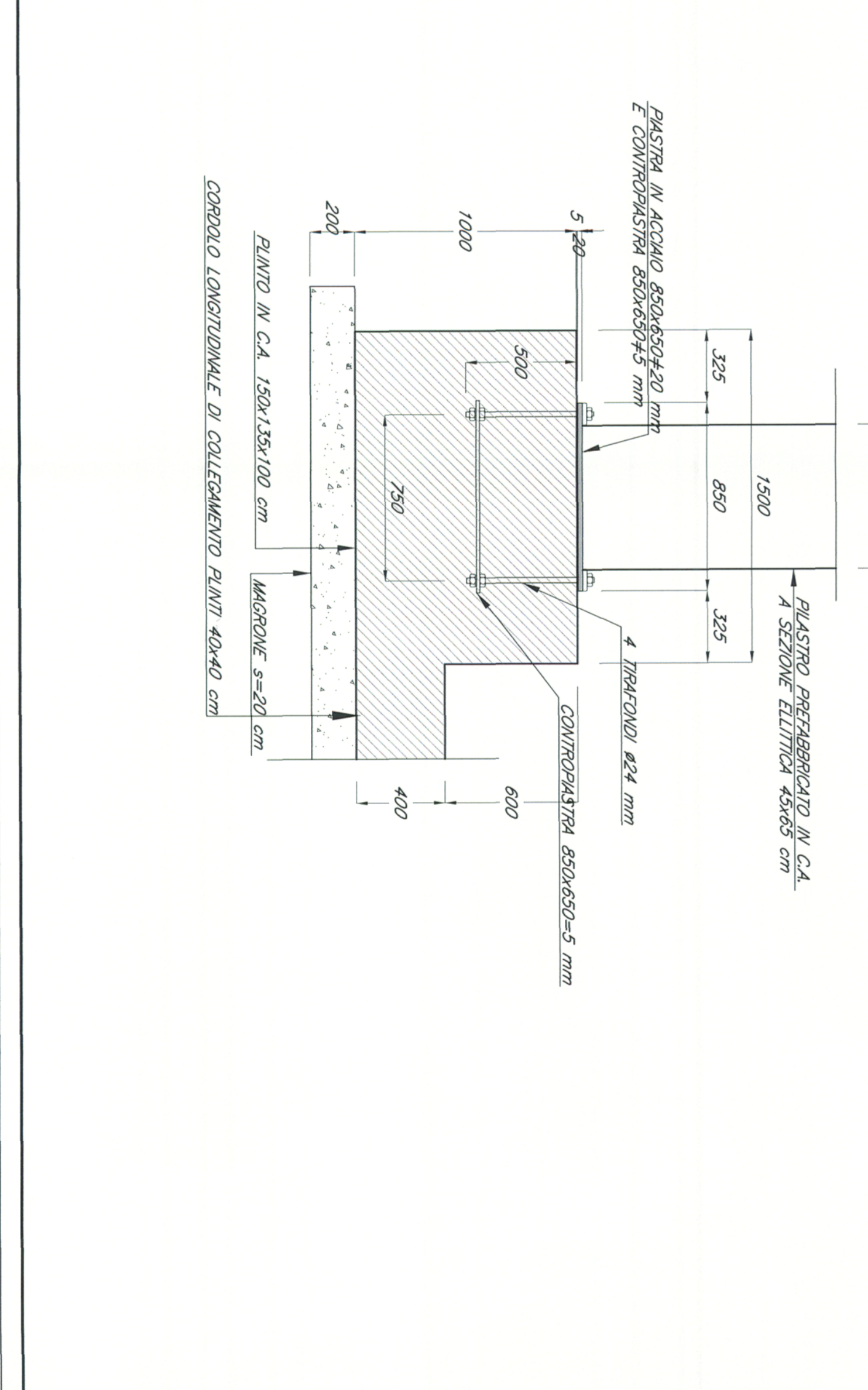
PIANTA PUNTO



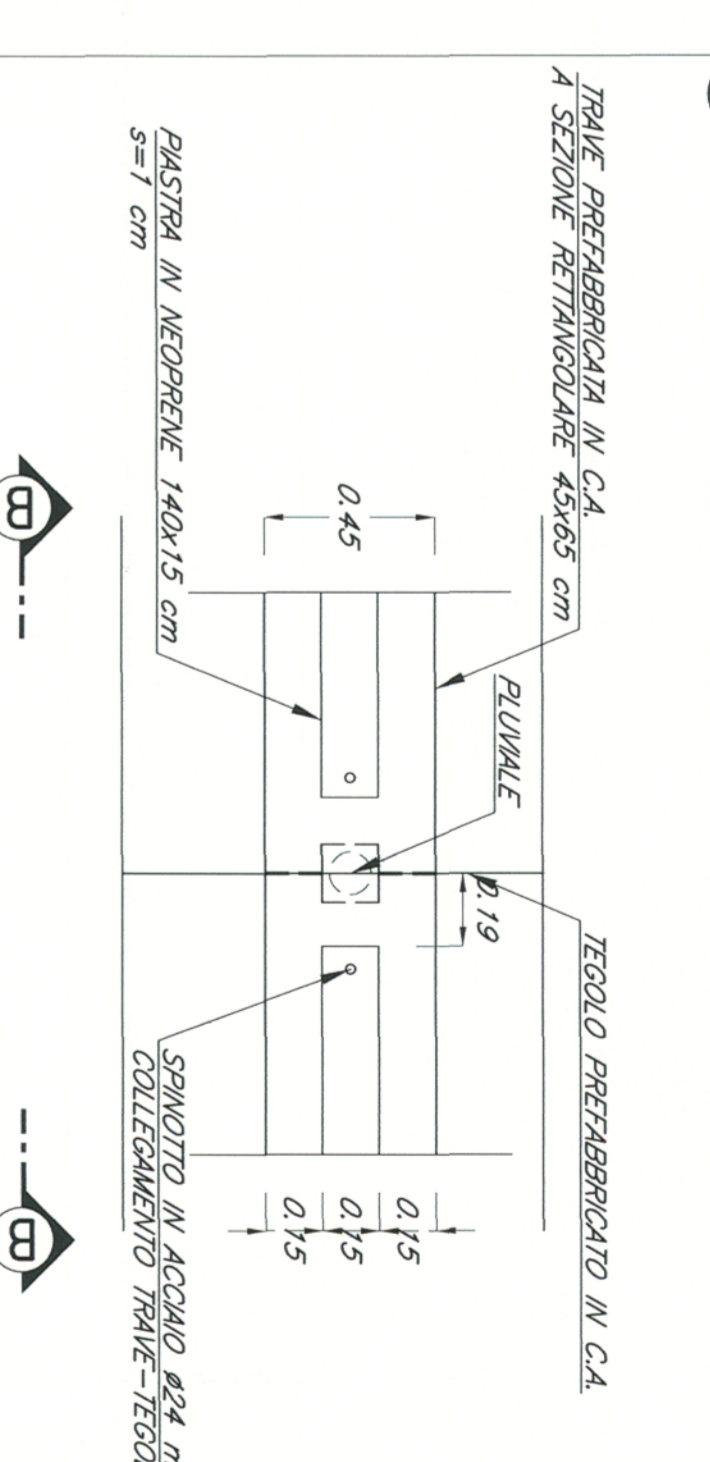
SEZIONE PUNTO F-F



SEZIONE PUNTO G-G



DETAGLIO A - UNIONE TRAVE-TEOLO



DETAGLIO A - UNIONE TRAVE-TEOLO - VISTA B-B

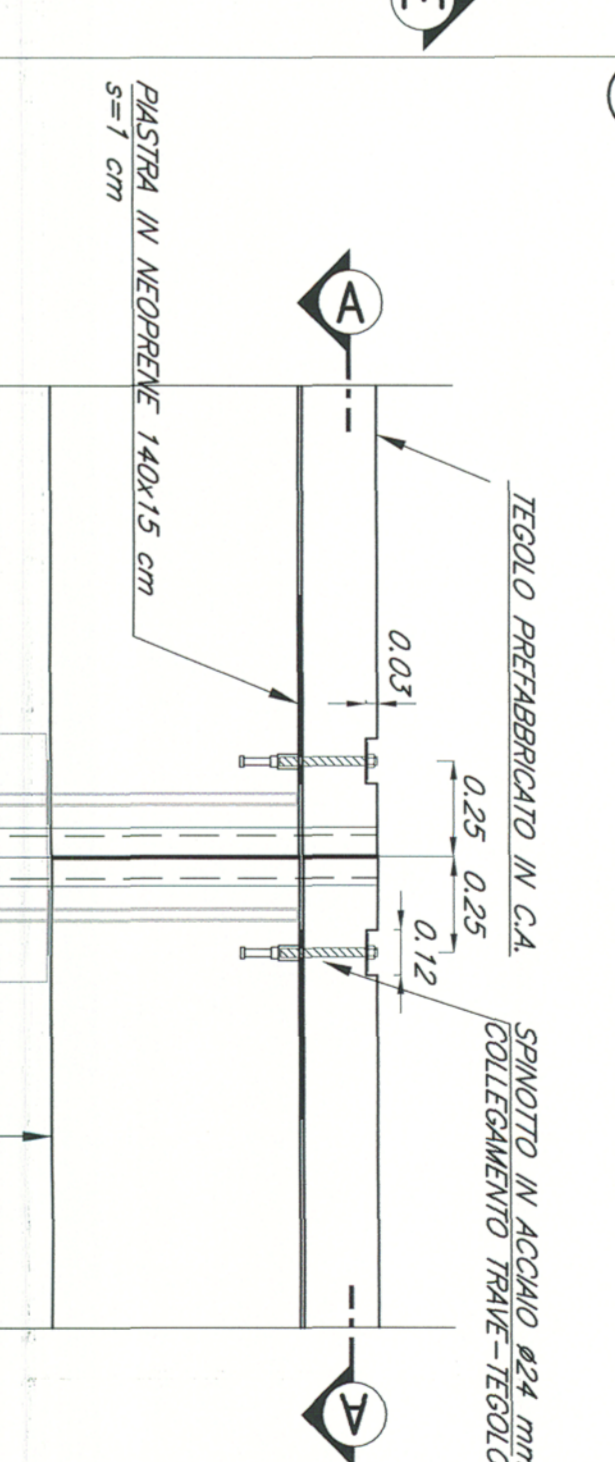


TABELLA MATERIALI

Table with 5 columns: Description, Quantity, Unit, Price, Total. Includes sections for concrete (ACCIAIO), steel (CANTIERISTI), and reinforcement (INCIDENZE ARMATURE).

NOTE GENERALI

- List of general notes and specifications for the construction project, including references to standards and specific requirements.

INCIDENZE ARMATURE

Table showing reinforcement load requirements in kg/m² for different structural elements.

SEZ.

Table listing section types (A, B, C) and their corresponding reinforcement specifications.

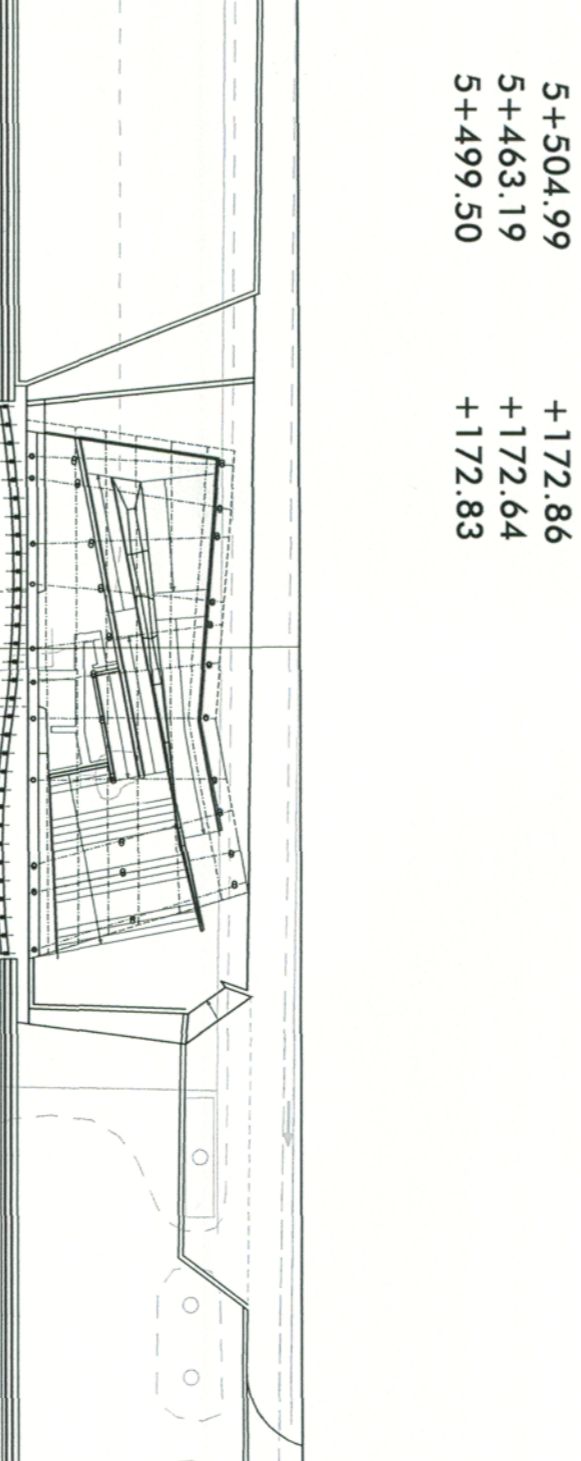


Table listing project participants: COMMITTEE (COMITTEE), PROJECTOR (PROGETTATORE), and CLIENT (COMITENTE).

Text block providing project details, including the name of the project and the client.

Text block detailing the project's technical and design aspects, including the project name and location.

Text block providing information about the project's approval and execution dates.

Table with columns for 'Revis' (Revision) and 'Data' (Date), detailing the project's review and approval process.