






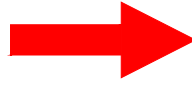
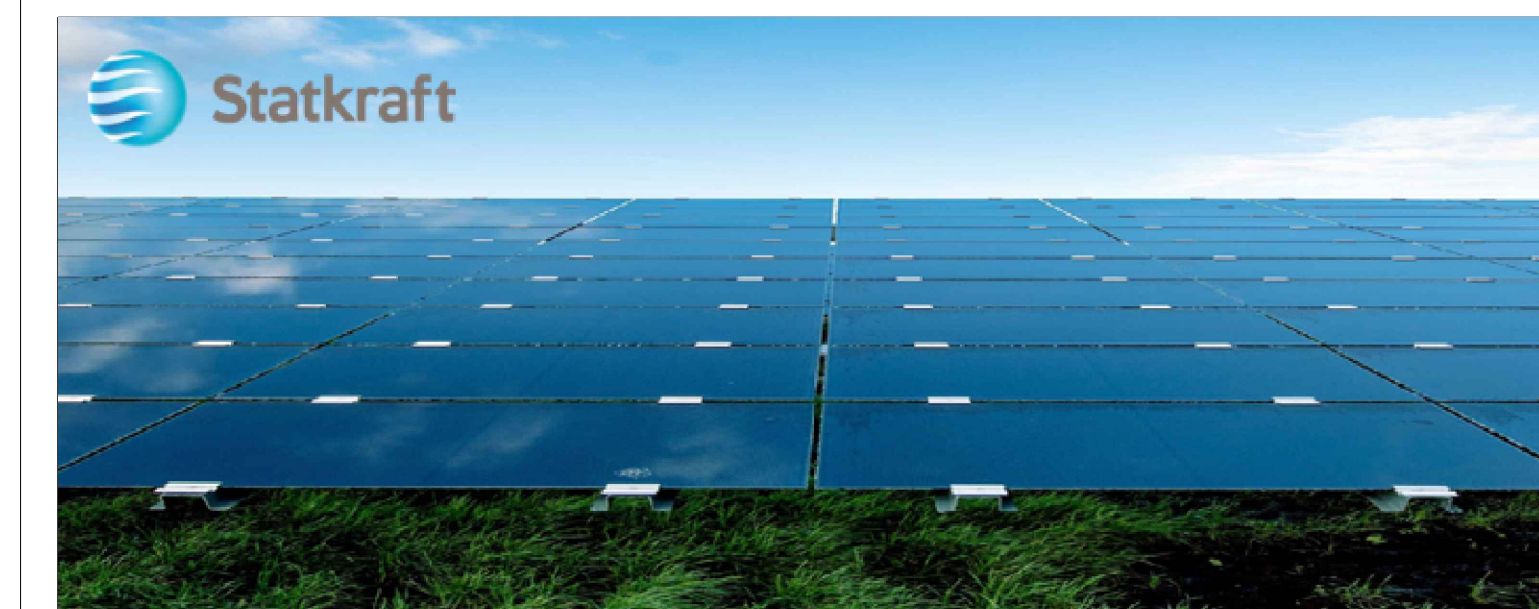


Legenda

	Viabilità
	Pannelli Fotovoltaici
	Fascia strada panoramica
	Fascia linea MT
	Recinzione
	Cabina di trasformazione
	Cabina di interfaccia
	Zona di accesso



IMPIANTO AGRIVOLTAICO E OPERE DI CONNESSIONE LA VALENTA

POTENZA IMPIANTO 22,66 MW - COMUNE DI PREDOSA (AL)

Proponente

SKI 26 S.R.L.
VIA CARADOSSO 9 - 20123 MILANO - P.IVA: 11412940964 - PEC: ski26@pec.it

Progettazione

Ing. Antonello Rutilio
VIA R. ZANDONAI 4 - 44124 - FERRARA (FE) - P.IVA: 00522150382 - PEC: inclico@pec.it
Tel.: +39 0532 202613 - email: a.rutilio@inclico.com

Collaboratori

Ing. Lorenzo Stocchino
VIA R. ZANDONAI 4 - 44124 - FERRARA (FE) - P.IVA: 00522150382 - PEC: inclico@pec.it
Tel.: +39 0532 202613 - email: l.stocchino@inclico.com

Coordinamento progettuale

Envidev Consulting S.R.L.
CORSO VITTORIO EMANUELE II 287 - 00186 - ROMA (RM) - P.IVA: 01653460558 - PEC: envidev_csrl@pec.it
Tel.: +39 3666 376 932 - email: francesco@envidevconsulting.com

Titolo Elaborato

Piano Quotato

LIVELLO PROGETTAZIONE	COD. ELABORATO	FILE NAME	DATA	SCALA
DEFINITIVO	PD_TAV03	23ENV04_PD_TAV03_00-PIANO QUOTATO.DWG	31/07/23	1:2.000

Revisioni

REV.	DATA	DESCRIZIONE	ESEGUITO	VERIFICATO	APPROVATO
0	31/07/23	EMISSIONE PERMITTING	LBO	LST	ARU



COMUNE DI PREDOSA (AL)
REGIONE PIEMONTE

