




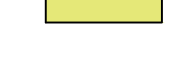


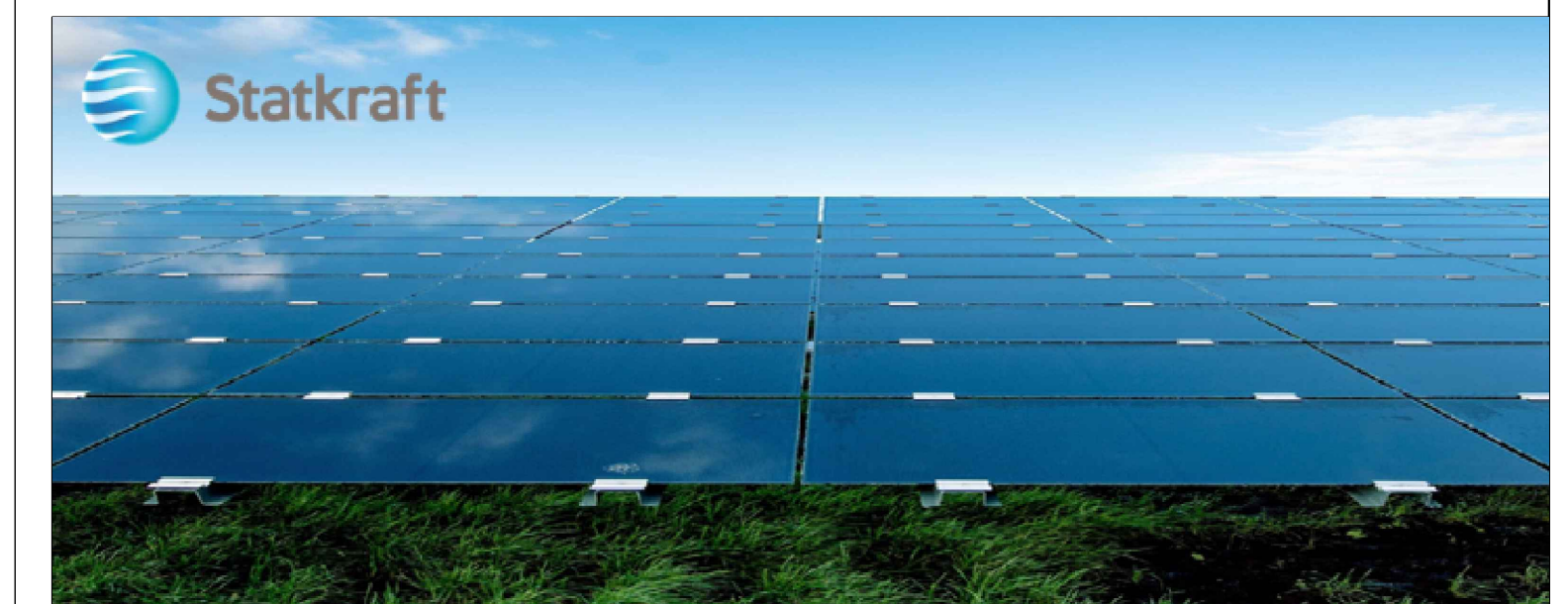
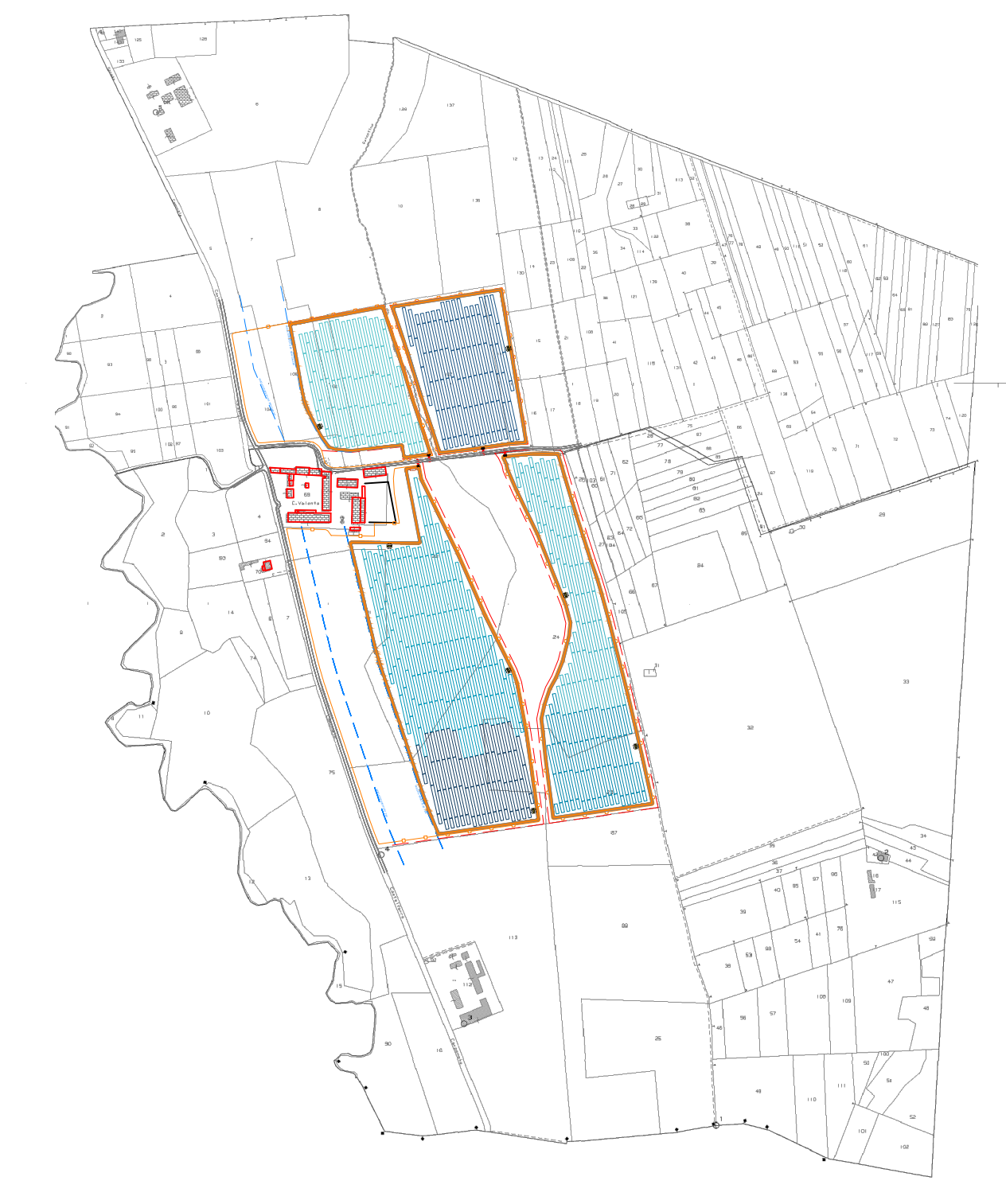


Legenda

-  Viabilità
-  Pannelli Fotovoltaici
-  Fascia strada panoramica
-  Fascia linea MT
-  Recinzione
-  Cabina di trasformazione
-  Cabina di interfaccia
-  Zona di accesso

Scala 1:10.000



IMPIANTO AGRIVOLTAICO E OPERE DI CONNESSIONE LA VALENTA

POTENZA IMPIANTO 22,7 MW - COMUNE DI PREDOSA (AL)

Proponente
SKI 26 S.R.L.
VIA CARADOSSO 9 - 20123 MILANO - P.IVA: 11412940664 - PEC: ski26@pec.it

Progettazione 
Ing. Antonello Rutilio
VIA R. ZANDONAI 4 - 44124 - FERRARA (FE) - P.IVA: 00522150382 - PEC: incoco@pec.it
Tel. +39 0532 202913 - email: a.rutilio@incoo.com

Collaboratori 
Ing. Lorenzo Stocchino
VIA R. ZANDONAI 4 - 44124 - FERRARA (FE) - P.IVA: 00522150382 - PEC: incoco@pec.it
Tel. +39 0532 202913 - email: l.stocchino@incoo.com

Coordinamento progettuale 
Envidev Consulting S.R.L.
CORSO VITTORIO EMANUELE II 287 - 00188 - ROMA (RM) - P.IVA: 0165340558 - PEC: envidev_csr@pec.it
Tel. +39 0666 376 932 - email: francesco@envidevconsulting.com

Titolo Elaborato

Layout impianto - Catastale				
LIVELLO PROGETTAZIONE	COD. ELABORATO	FILE NAME	DATA	SCALA
DEFINITIVO	PD_TAV06	IMPIANTO_DATAFILE.DWG	31/07/23	1:1.500

Revisioni					
REV.	DATA	DESCRIZIONE	ESEGUITO	VERIFICATO	APPROVATO
0	31/07/23	EMISSIONE PERMITTING	LBO	LST	ARU