



Engineering & Construction



GRE CODE

GRE.EEC.K.99.IT.W.09317.05.028.00

PAGE

1 di/of 1

TITLE:

AVAILABLE LANGUAGE: IT

# INTEGRALE RICOSTRUZIONE DELL' IMPIANTO EOLICO "GANGI", UBICATO NEL COMUNE DI GANGI (PA)

## PROGETTO DEFINITIVO

### Allegato 2

di

### Relazione studio vibrazionale

GRE.EEC.K.99.IT.W.09317.05.028.00

File: GRE.EEC.K.99.IT.W.09317.05.028.00- Rel vibrazionale Allegato 2 Mappe.docx

REV.	DATE	DESCRIPTION	PREPARED	VERIFIED	APPROVED
00	06/12/2023	Prima emissione (Recepimento integrazioni MASE (richiesta 5.3))	L. Magni D.Irto	M. Sergenti	M. Sergenti

#### GRE VALIDATION

	<i>F. Lenci</i>	<i>L. Iacofano</i>
COLLABORATORS	VERIFIED BY	VALIDATED BY

PROJECT / PLANT

Gangi

#### GRE CODE

GROUP	FUNCTION	TYPE	ISSUER	COUNTRY	TEC	PLANT	SYSTEM	PROGRESSIVE	REVISION										
GRE	EEC	K	9	9	I	T	W	0	9	3	1	7	0	5	0	2	8	0	0

CLASSIFICATION

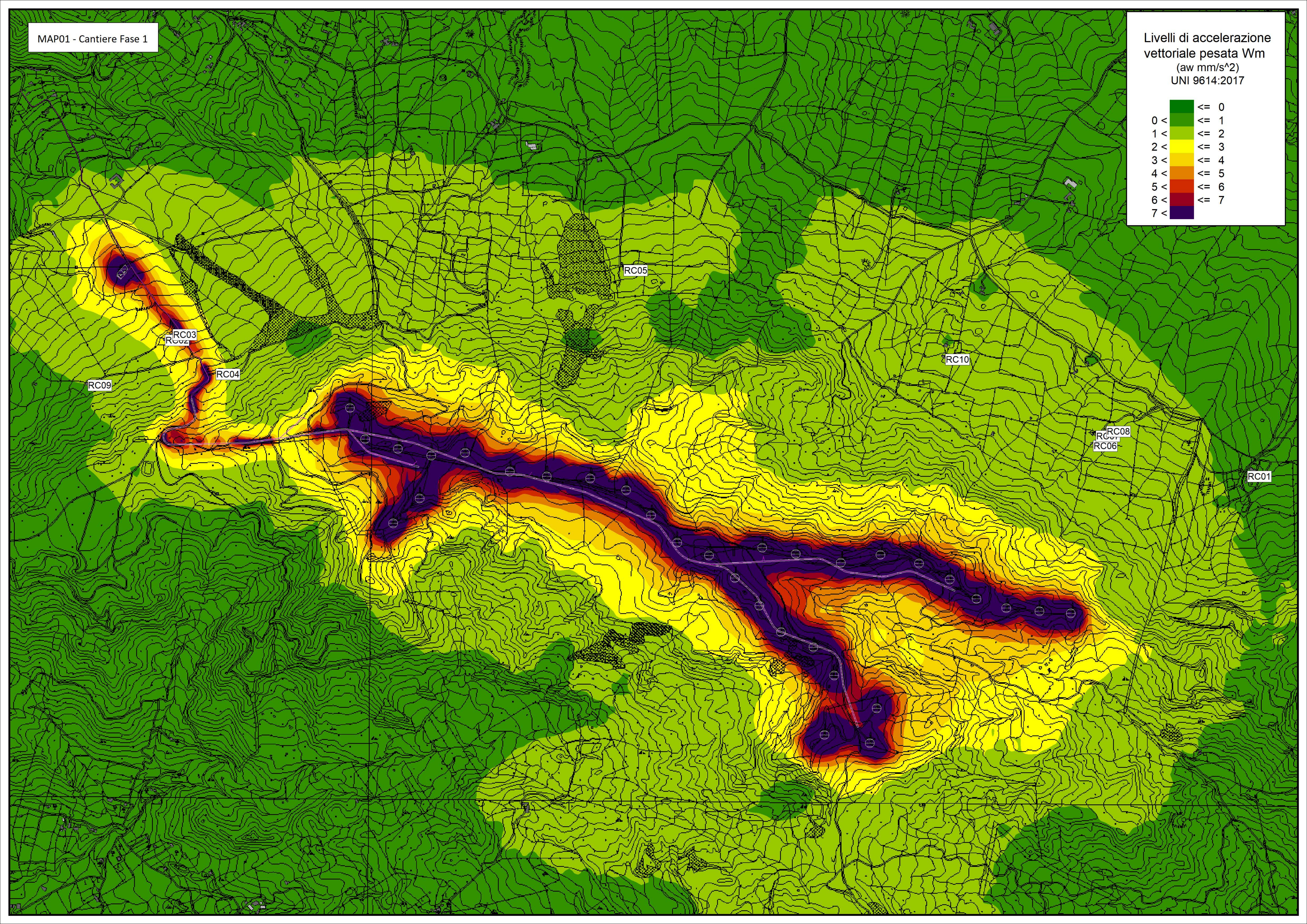
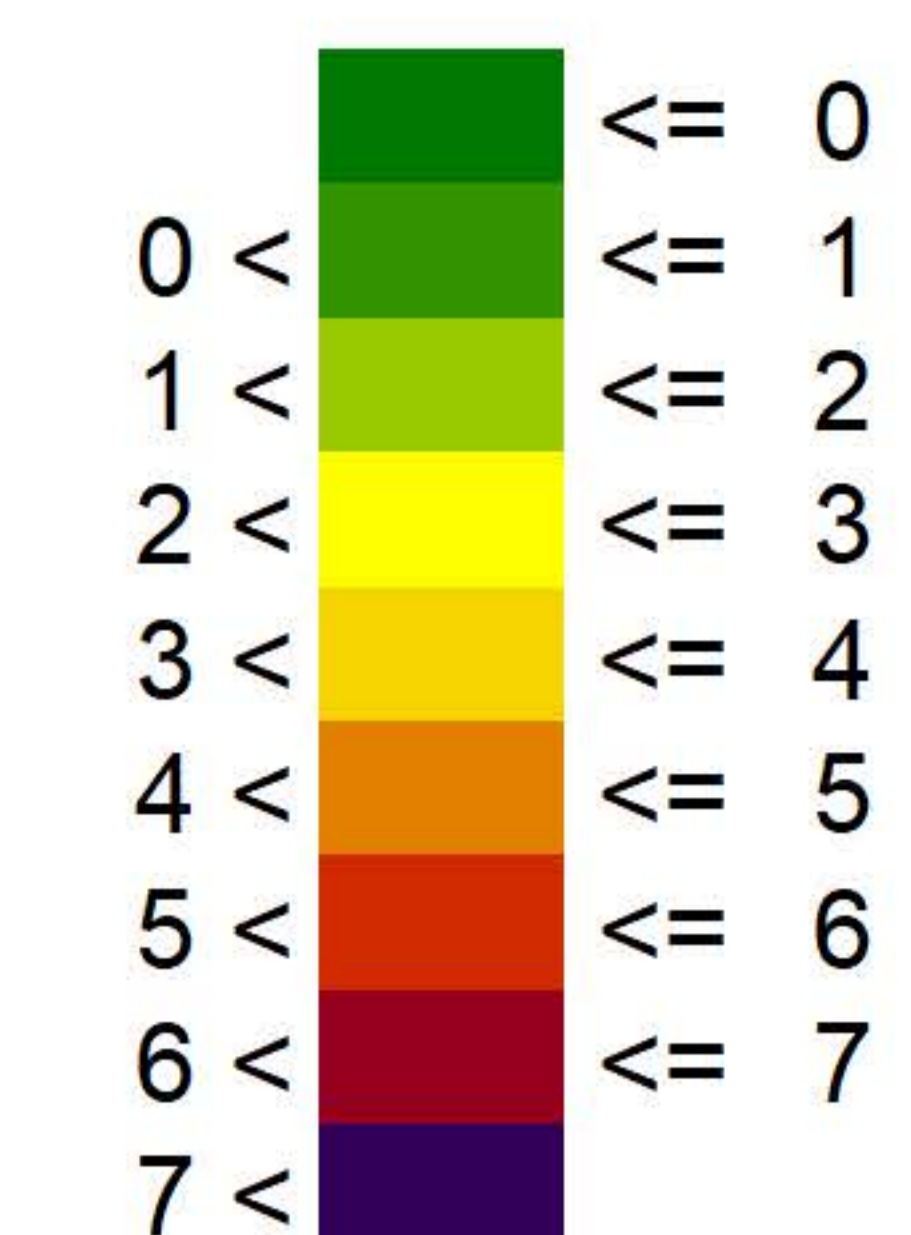
**PUBLIC**

UTILIZATION SCOPE

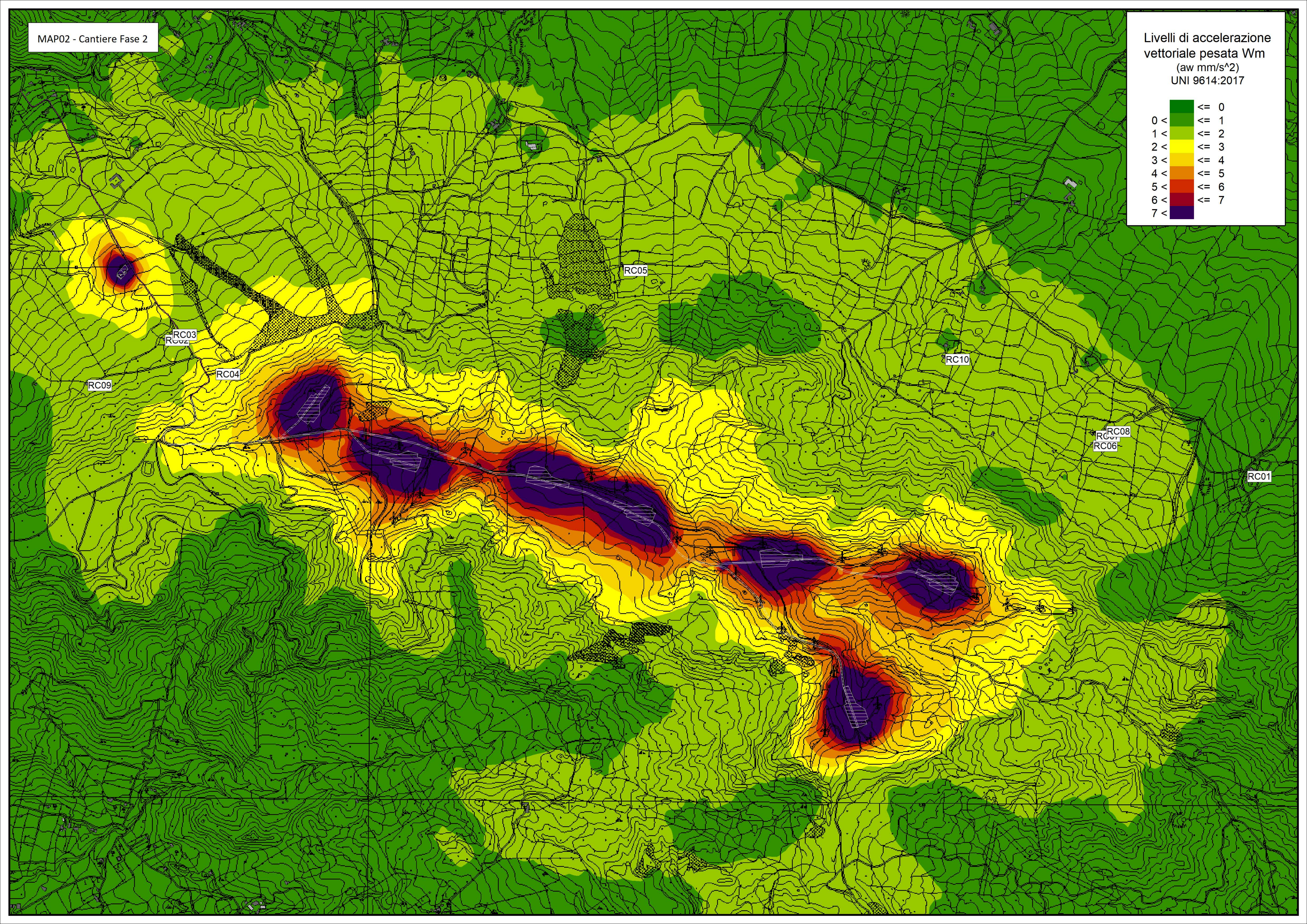
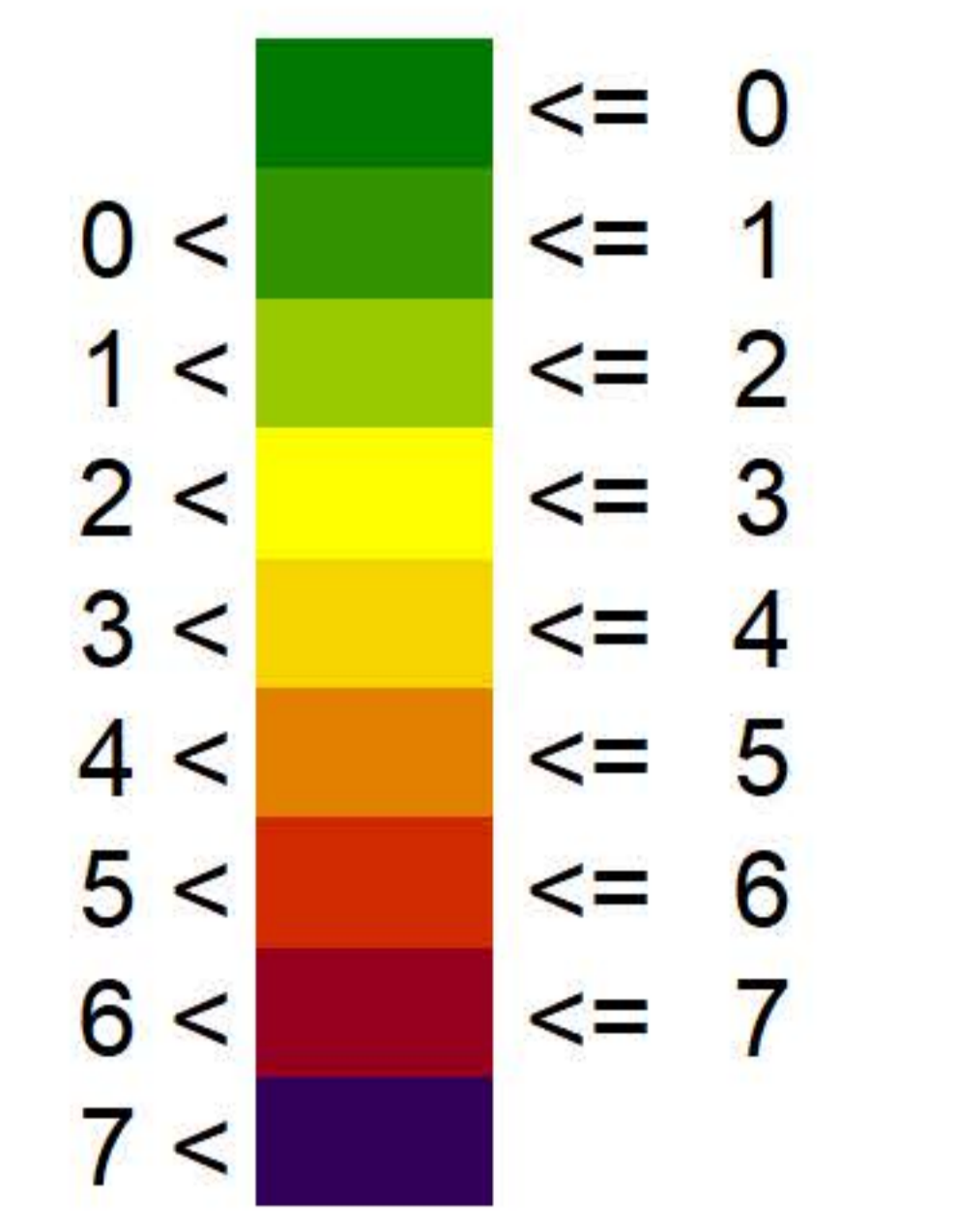
**BASIC DESIGN**

This document is property of Enel Green Power Italia s.r.l. It is strictly forbidden to reproduce this document, in whole or in part, and to provide to others any related information without the previous written consent by Enel Green Power Italia s.r.l.

Livelli di accelerazione  
vettoriale pesata  $W_m$   
( $a_w$  mm/s<sup>2</sup>)  
UNI 9614:2017



Livelli di accelerazione  
vettoriale pesata  $W_m$   
( $a_w$  mm/s<sup>2</sup>)  
UNI 9614:2017



Livelli di accelerazione  
vettoriale pesata  $W_m$   
( $a_w$  mm/s<sup>2</sup>)  
UNI 9614:2017

