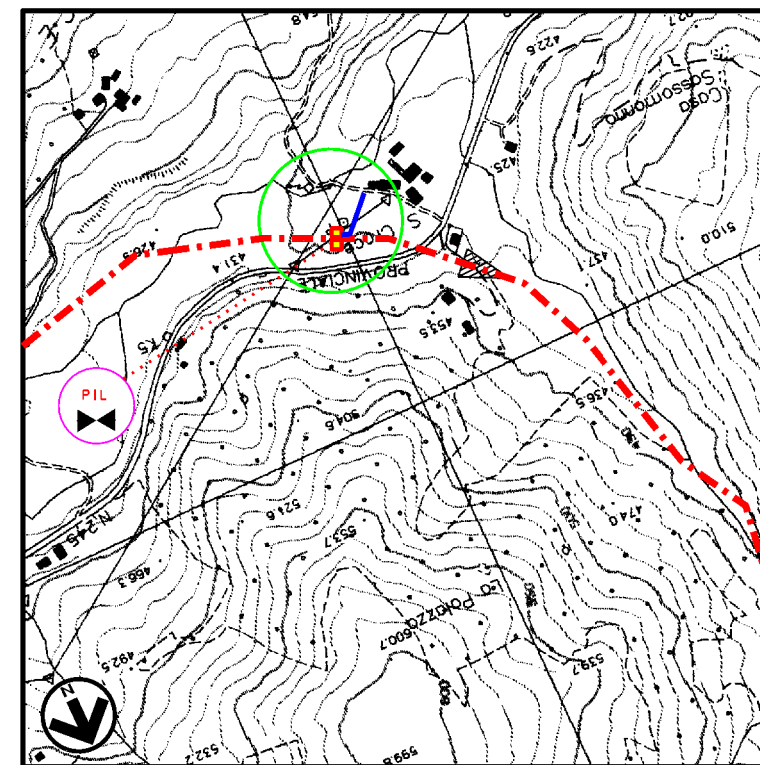




PLANIMETRIA 1:2000
COMUNE DI GUALDO TADINO F.52 - 58 - 59









COROGRAFIA Scala 1:10.000
CTR 301130

| 1 | 14/12/2023 | EMISSIONE PER PERMESSI | L FALCETELLI | F VITALI | A BRUNI G BRIA |
|--|------------|---|-----------------|-----------------|-------------------|
| 0 | 14/11/2023 | EMISSIONE PER COMMENTI | L FALCETELLI | F VITALI | A BRUNI G BRIA |
| REV | DATA | DESCRIZIONE | ELABORATO | VERIFICATO | APPROVATO |
| PROPRIETARIO | | PROGETTISTA | Disegno | | |
|  | |   Rif.: 2295-203-DW-1424-03 T.EN ITALY SOLUTIONS S.p.A. | 10-ZB-D-81303 | | |
| METANODOTTO: FOLIGNO - SESTINO DN 1200 mm (48"), DP 75 bar | | | Revisione | 1 | |
| 3° TRONCO: NOCERA UMBRA - GUALDO TADINO PUNTO DI INTERCETTAZIONE DI LINEA PIL LOC SANTA CROCE - PROGETTO DI MASCHERAMENTO IMPIANTO | | | Comm | NQ/R22357/R-L01 | |
| | | | Cod tec | | |
| | | | Scala 1:200/100 | Fg 1 di 3 | |

| | | | | | |
|--------------|------------|---|--------------|----------------------|----------------------|
| 1 | 14/12/2023 | EMISSIONE PER PERMESSI | L FALCETELLI | F VITALI | A. BRUNI G. BRINA |
| 0 | 14/11/2023 | EMISSIONE PER COMMENTI | L FALCETELLI | F VITALI | A. BRUNI G. BRINA |
| REV | DATA | DESCRIZIONE | ELABORATO | VERIFICATO | APPROVATO |
| PROPRIETARIO | | PROGETTISTA | | Disegno | |
| snam | | TEN TECHNIP ENERGIES techfem | | 10-ZB-D-81303 | |
| | | Rif.: 2295-203-DW-1424-03 TEN ITALY SOLUTIONS S.p.A. | | Comm NQ/R22357/R-L01 | |

LEGENDA MASCHERAMENTO

-  AREA DI INTERVENTO
-  Populus nigra (Pioppo nero) h. 1,25 m - 1,50 m
-  Ulmus minor (Olmo campestre) h. 1,25 m - 1,50 m
-  Corylus avellana (Nocciolo) h. 0,60 m - 0,80 m
-  Cornus mas (Corniolo) h. 0,60 m - 0,80 m
-  Sambucus nigra (Sambuco comune) h. 0,60 m - 0,80 m

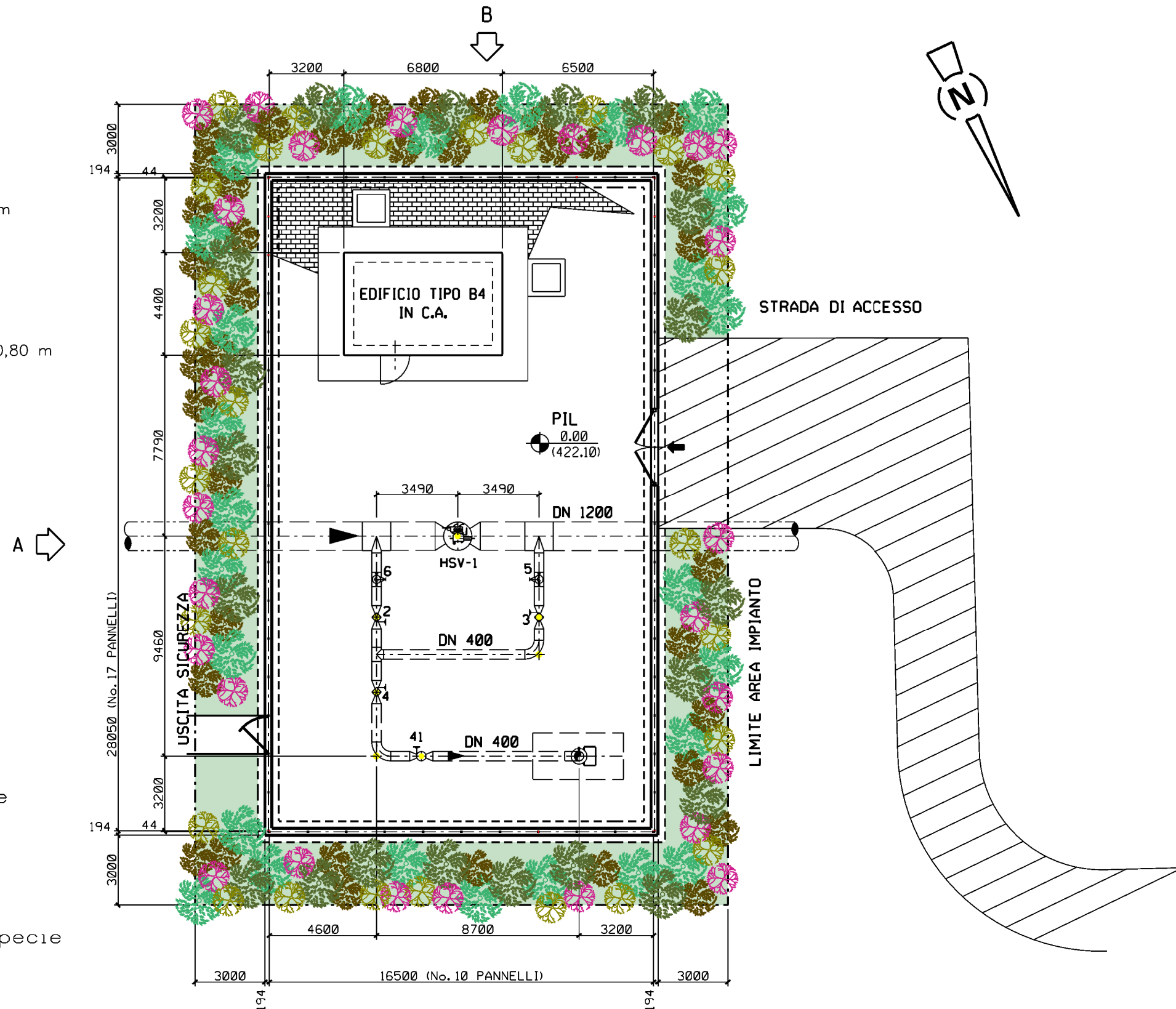
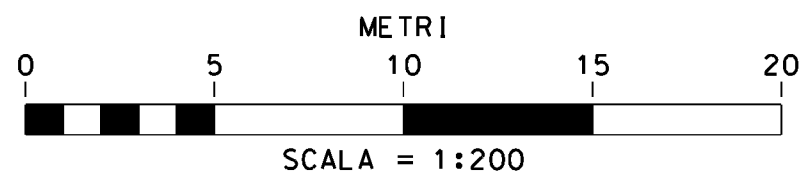
MASCHERAMENTO LATI IMPIANTO:

| SPECIE: | PIANTE N°: |
|------------------|------------|
| Populus nigra | 21 |
| Ulmus minor | 25 |
| Corylus avellana | 40 |
| Cornus mas | 28 |
| Sambucus nigra | 29 |

NOTE




La distribuzione delle specie deve avvenire in modo casuale sullo spazio (senza uno schema predefinito)

Le distanze tra le specie arbustive non devono essere inferiori a 0,80 m.
 Le distanze tra le specie arboree e le altre specie non devono essere inferiori a 1,00 m.

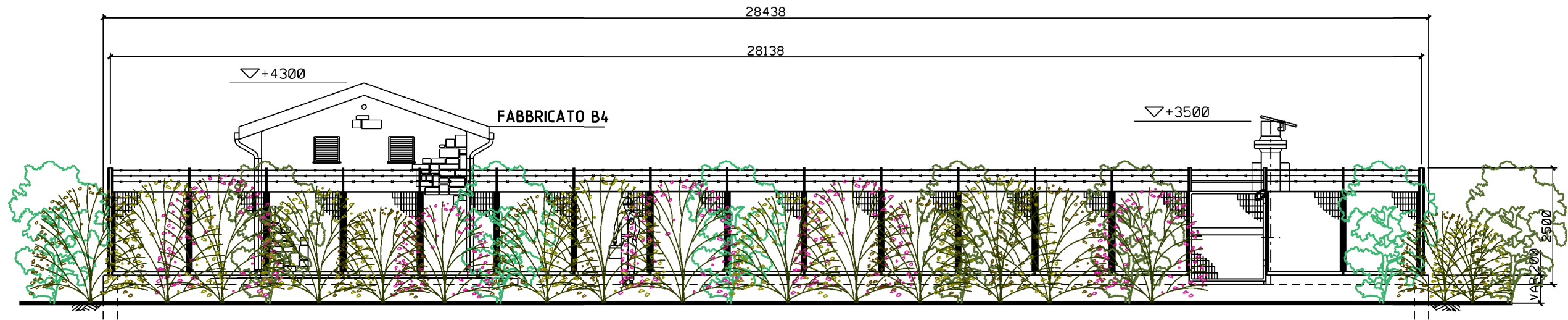


METANODOTTO: FOLIGNO - SESTINO - DN 1200 mm (48"), DP 75 bar
 3° TRONCO: NOCERA UMBRA - GUALDO TADINO

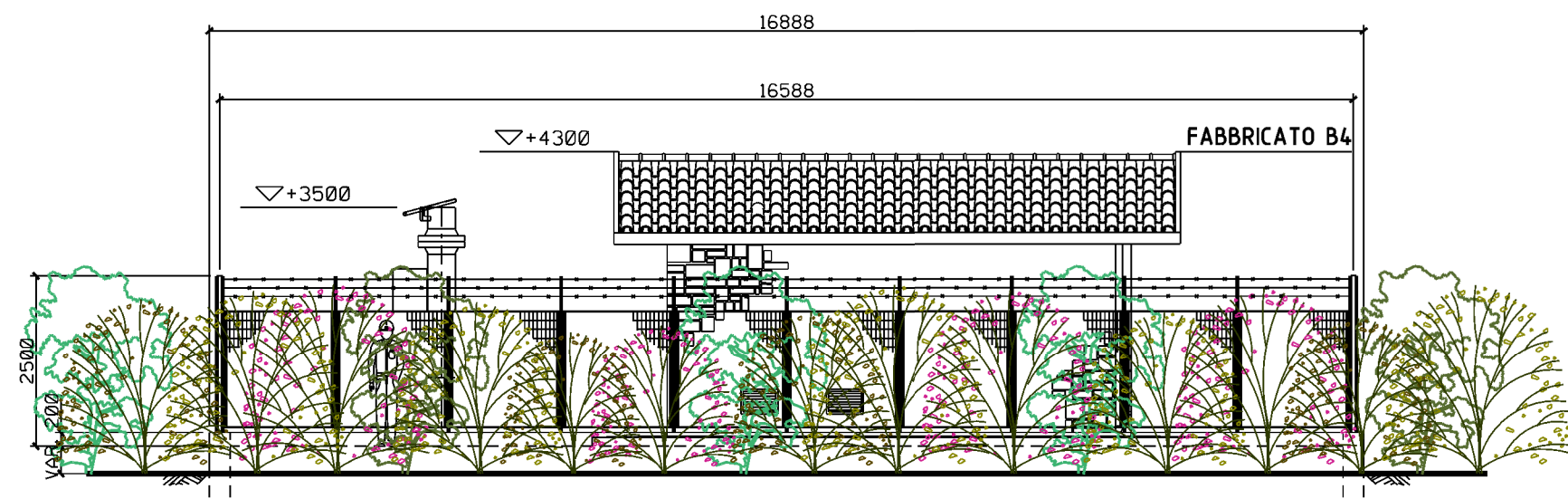
PUNTO DI INTERCETTAZIONE DI LINEA PIL - LOC. SANTA CROCE
 PROGETTO DI MASCHERAMENTO IMPIANTO - PROSPETTI

| | | | | | |
|---|------------|---|----------------------|------------|---------------------|
| 1 | 14/12/2023 | EMISSIONE PER PERMESSI | L FALCETELLI | F VITALI | A. BRUNI G. BRIA |
| 0 | 14/11/2023 | EMISSIONE PER COMMENTI | L FALCETELLI | F VITALI | A. BRUNI G. BRIA |
| REV | DATA | DESCRIZIONE | ELABORATO | VERIFICATO | APPROVATO |
| PROPRIETARIO | | PROGETTISTA | Disegno | | |
|  | |   | 10-ZB-D-81303 | | |
| | | Rif.: 2295-203-DW-1424-03 TEN ITALY SOLUTIONS S.p.A. | Comm NQ/R22357/R-L01 | | |

Foglio
3
 di 3
 Scala
1:100













PROSPETTO A



PROSPETTO B

LEGENDA MASCHERAMENTO

| | | | | | |
|---|---|----------------------|---|---|----------------------|
|  |  | Pioppo nero n. 21 |  |  | Corniolo n. 28 |
|  |  | Olmo campestre n. 25 |  |  | Sambuco comune n. 29 |
|  |  | Nocciolo n. 40 | | | |

