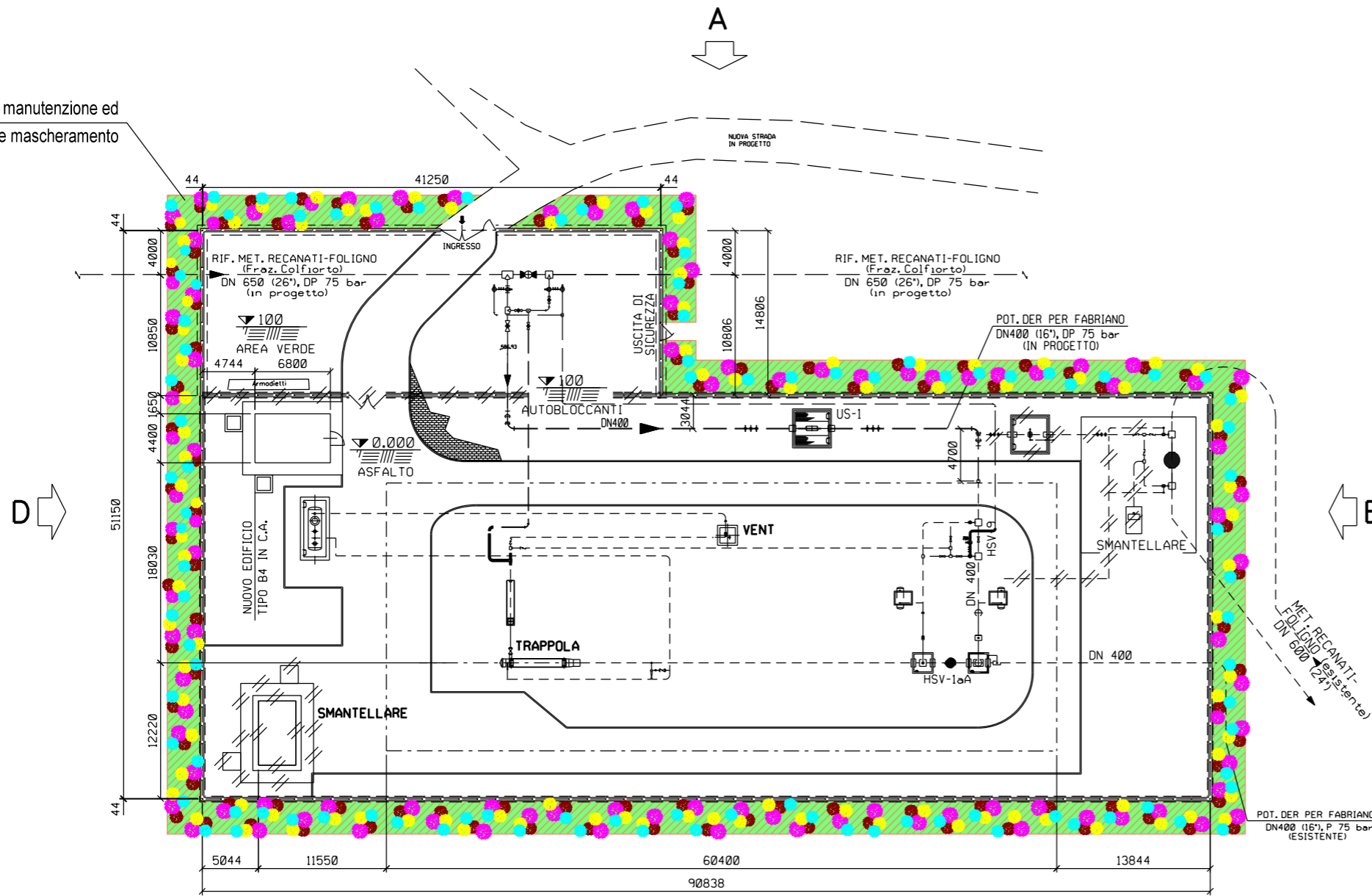


Area per manutenzione ed eventuale mascheramento



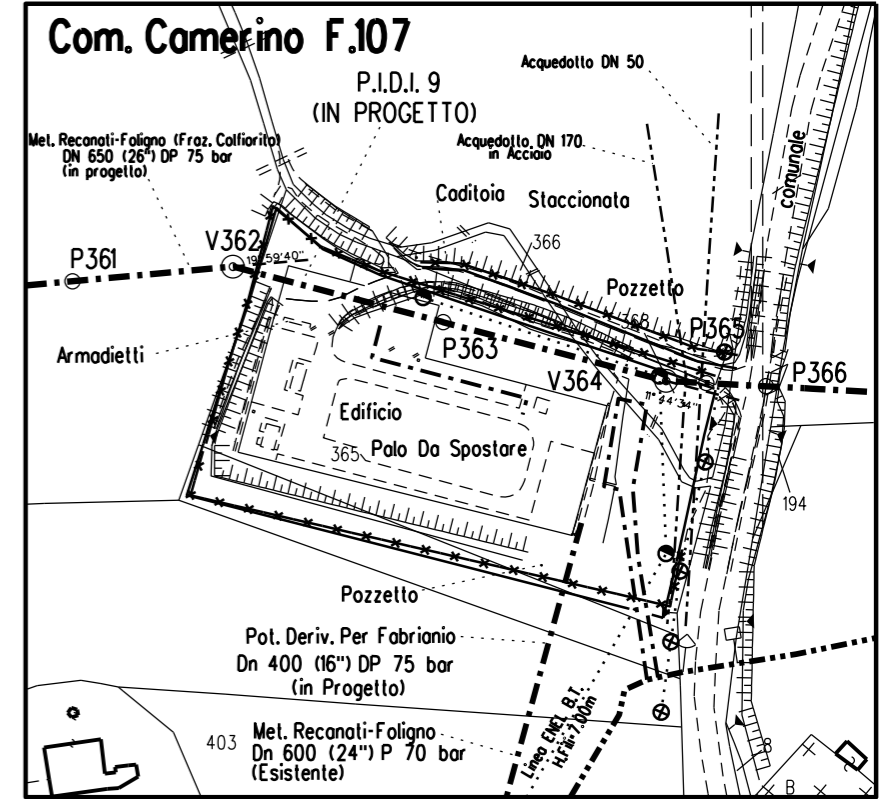
D

A

B

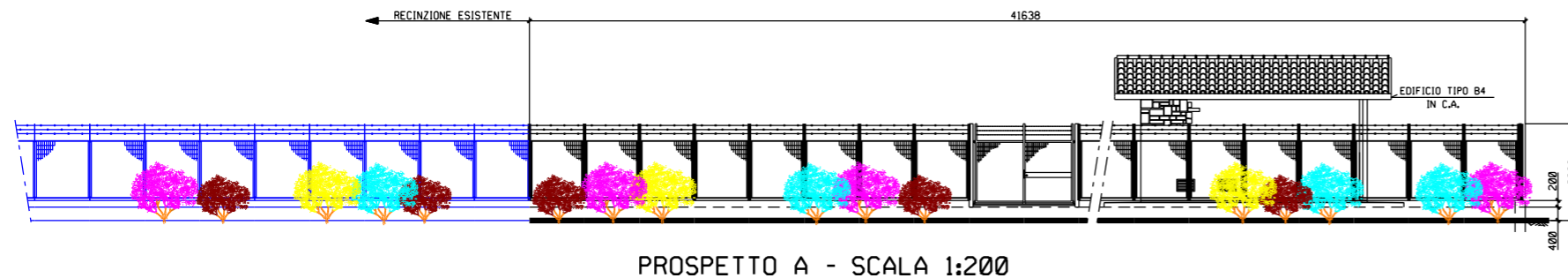
C

 AREE PER MANUTENZIONE ED EVENTUALE MASCHERAMENTO

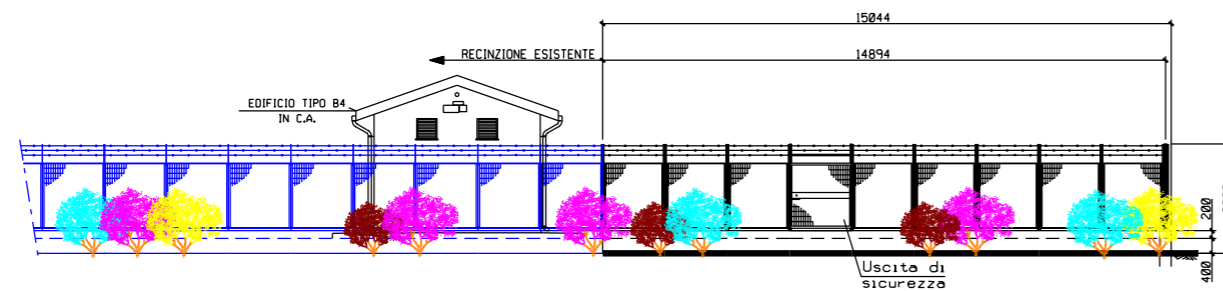


STRALCIO PLANIMETRICO - Scala 1:2000
COMUNE DI CAMERINO F.107

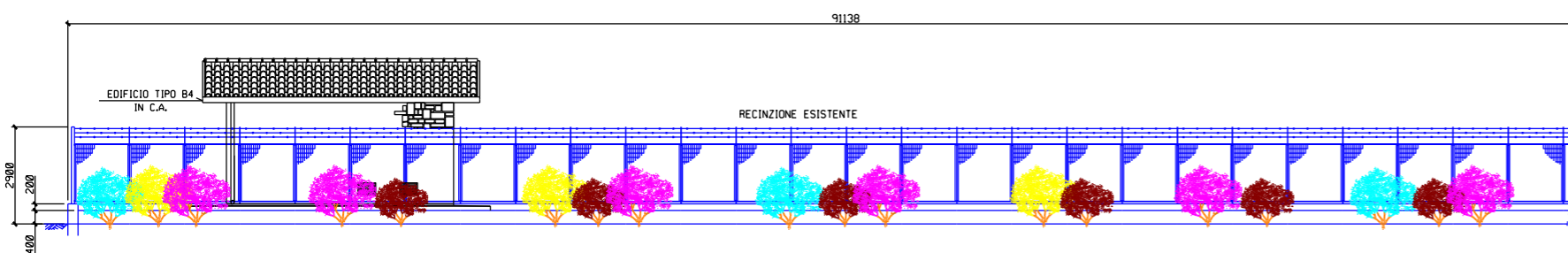
0	APRILE 2022	EMISSIONE	TARINI	RAGGI	STEFANI
Rev.	DATA	DESCRIZIONE	ELABORATO	VERIFICATO	APPROVATO
CLIENTE		PROGETTISTA			
Metanodotto: RECANATI-FOLIGNO (Frazione-Colfiorito) DN650 (26"), DP 75 bar			WBS CLIENTE WBS NR/19136/R-L01 COD. TEC. 20645 COMM. SAIPEM 023087-185		
			DISEGNO LC-D-81742		
PUNTO DI INTERCETTAZIONE DI DERIVAZIONE IMPORTANTE PIDI n.9 Loc. "CASE COL MORRONE" PROGETTO DI RIPRISTINO VEGETAZIONALE MASCHERAMENTO IMPIANTI DI LINEA SCHEDA n.9			REVISIONE 0		
			SCALA 1:500	FG 1	DI 2



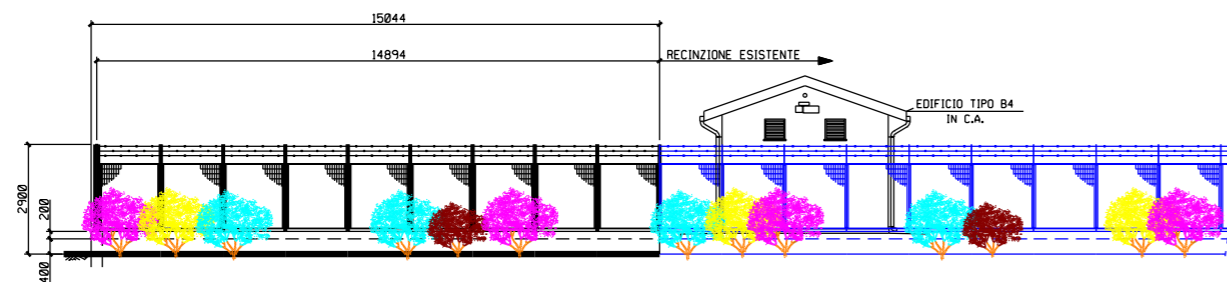
PROSPETTO A - SCALA 1:200



PROSPETTO B - SCALA 1:200







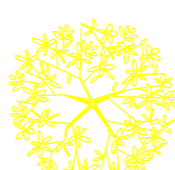



PROSPETTO C - SCALA 1:200



PROSPETTO D - SCALA 1:200

LEGENDA

		Crataegus monogyna (Biancospino)	(n.96 p.te)
		Ligustrum vulgare (Ligustro)	(n.96 p.te)
		Colutea arborescens (Vescicaria)	(n.96 p.te)
		Emerus majus (Cornetta dondolina)	(n.96 p.te)
			Totale (n.384 arbusti)

Arbusti:sesto impianto 1,5 x 1,5 m piante di
 h.0,60-0,80 m in contenitore;
 dischi pacciamanti in fibre vegetali.
 shelter per la protezione individuale e pali tutori
 per le piante arboree