


**REGIONE ABRUZZO**  
**COMUNE DI FURCI**  
 Provincia di Chieti



loc. Morge

**REALIZZAZIONE E GESTIONE DI UN IMPIANTO FOTOVOLTAICO DELLA POTENZA NOMINALE DI 53.69 MW CON RELATIVE OPERE DI CONNESSIONE ALLA RETE ELETTRICA NAZIONALE**

PROGETTISTA: **Expand** - Salerno  
 Studio Tecnico: **ING. TOSCANI**  
 Studio Tecnico: **ING. DI GIACOMO**

PROGETTO DEFINITIVO  
 CARTA DELLE INTERFERENZE

DATA: Febbraio 2023  
 VARIANTE: AD  
 ELABORAZIONE: **F\_4.1.d**

Individuazione delle interferenze lungo il percorso del cavidotto di connessione

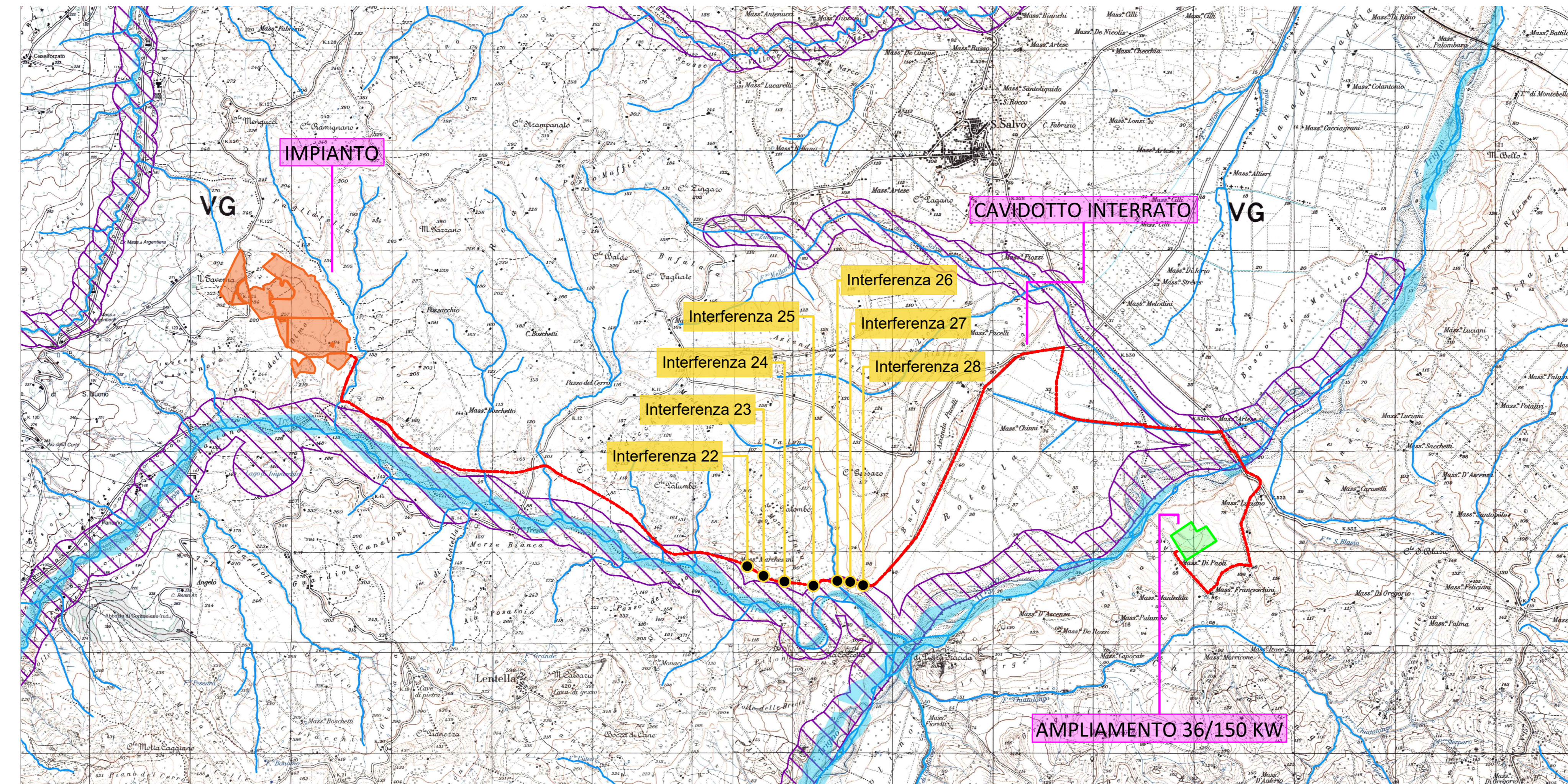
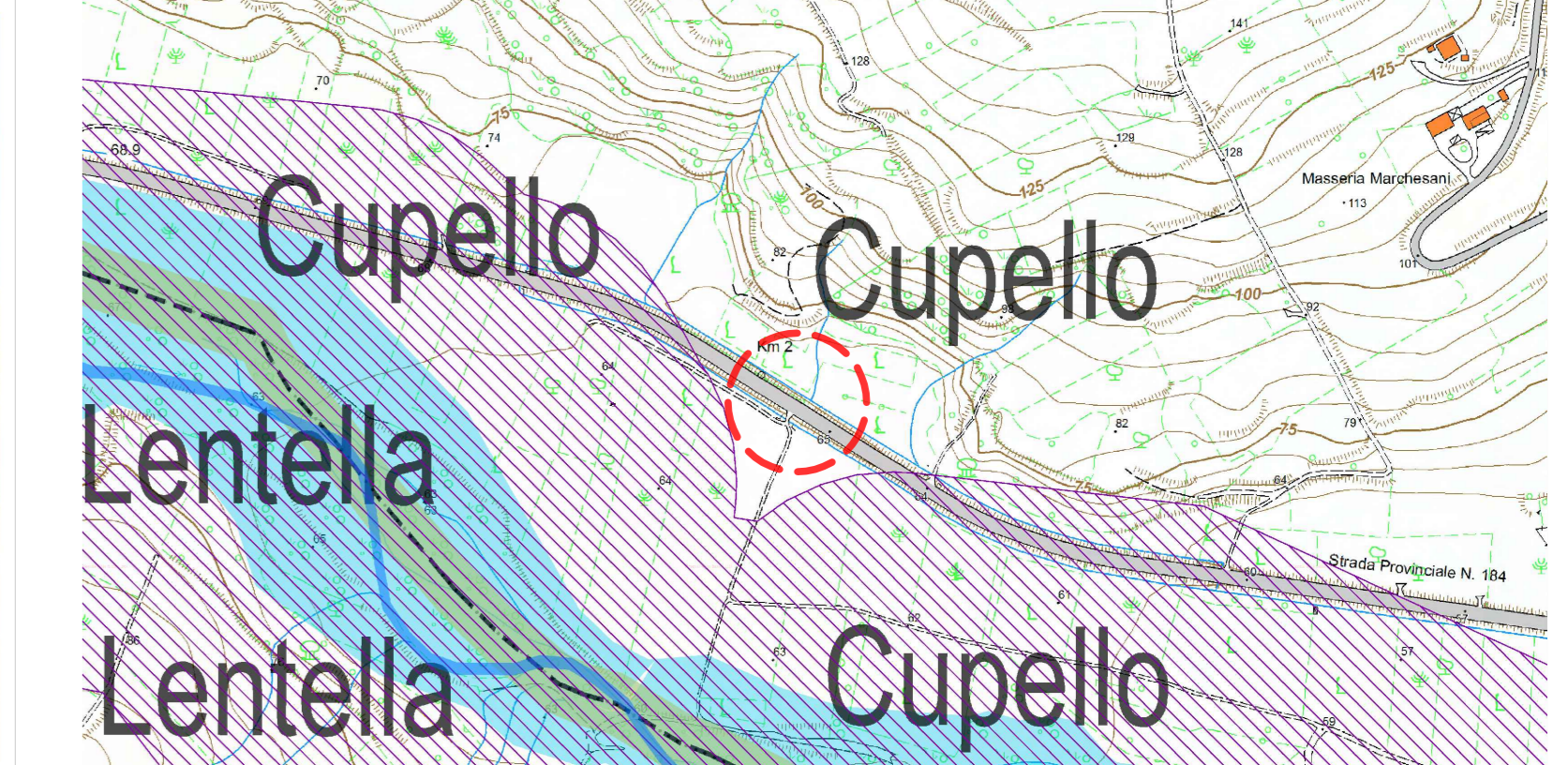


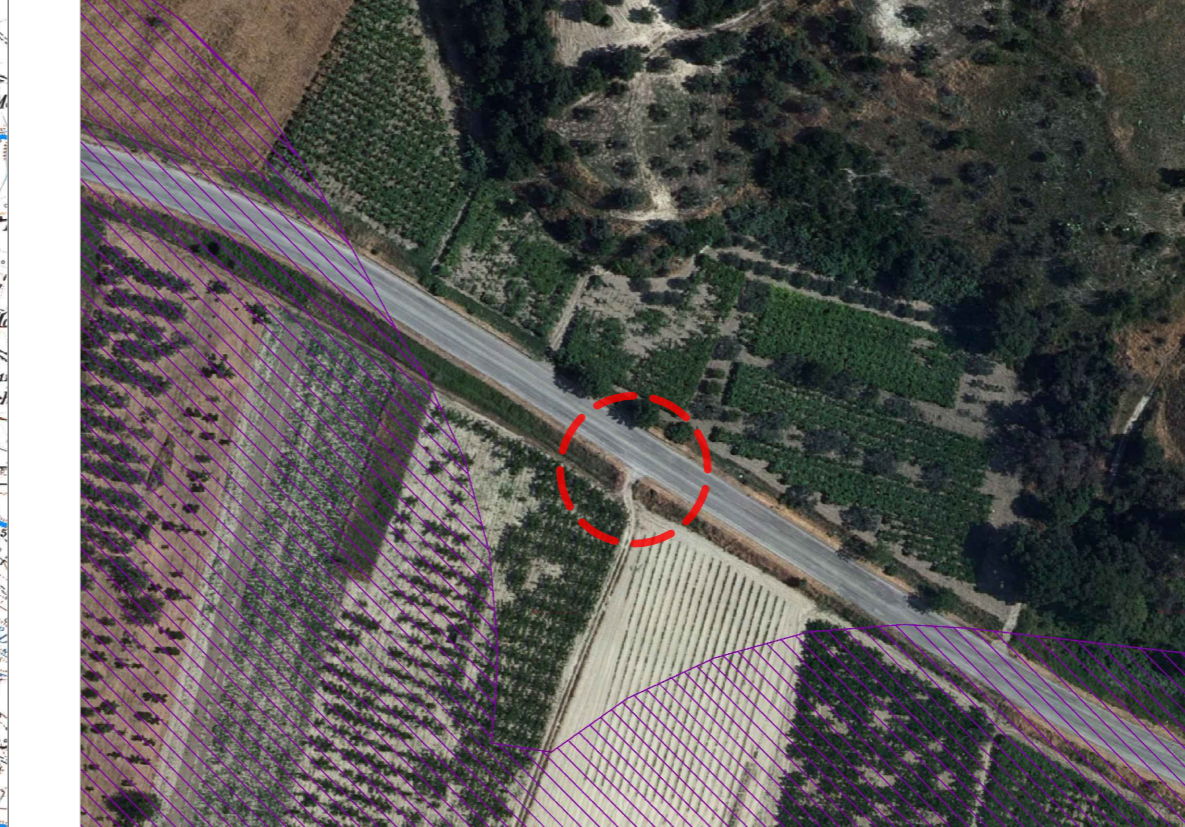
Foto - Interferenza 22



Inquadramento su CTR



Ortofoto con vincolo



Pianta e sezione X - Interferenza 22

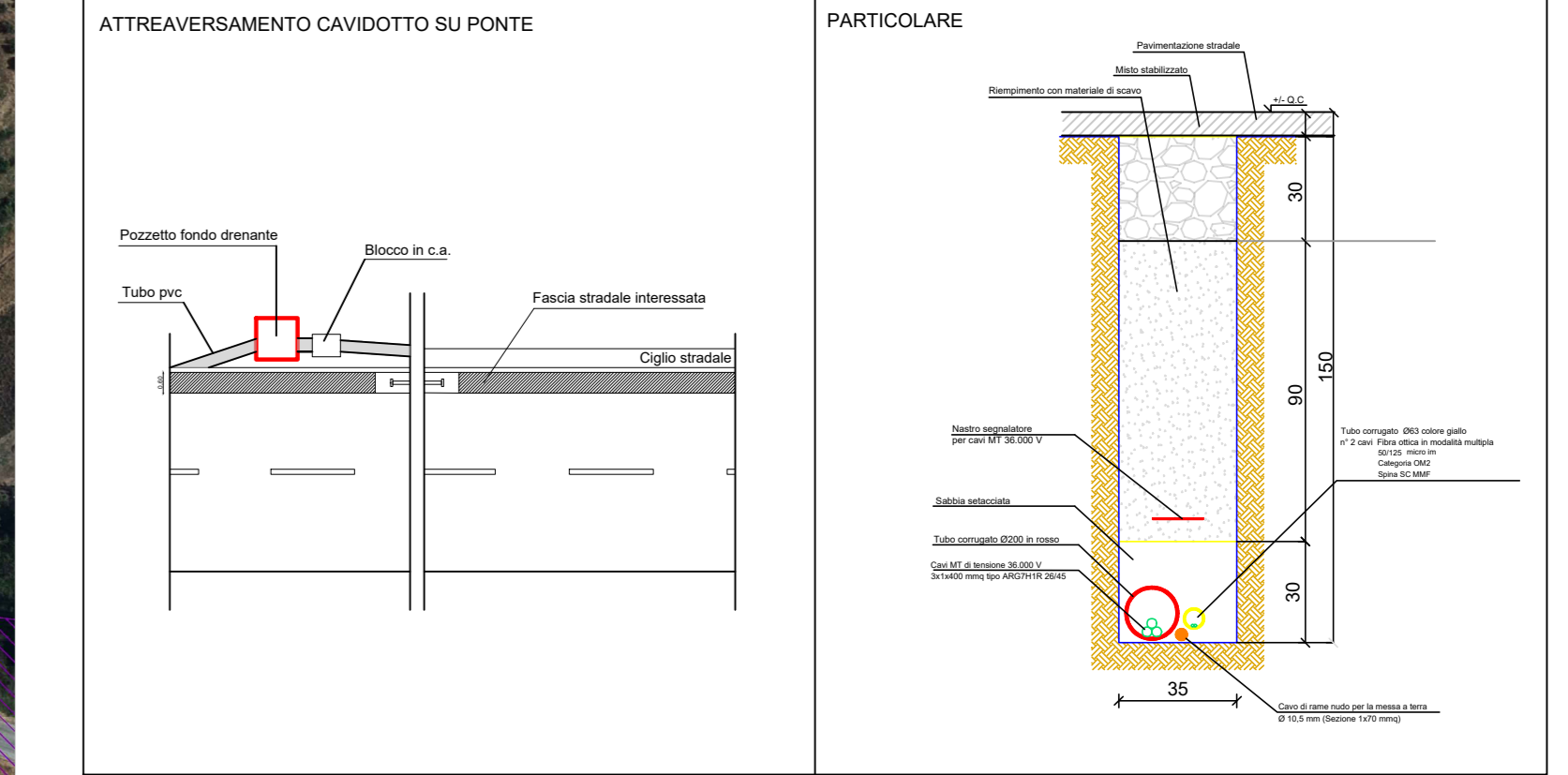
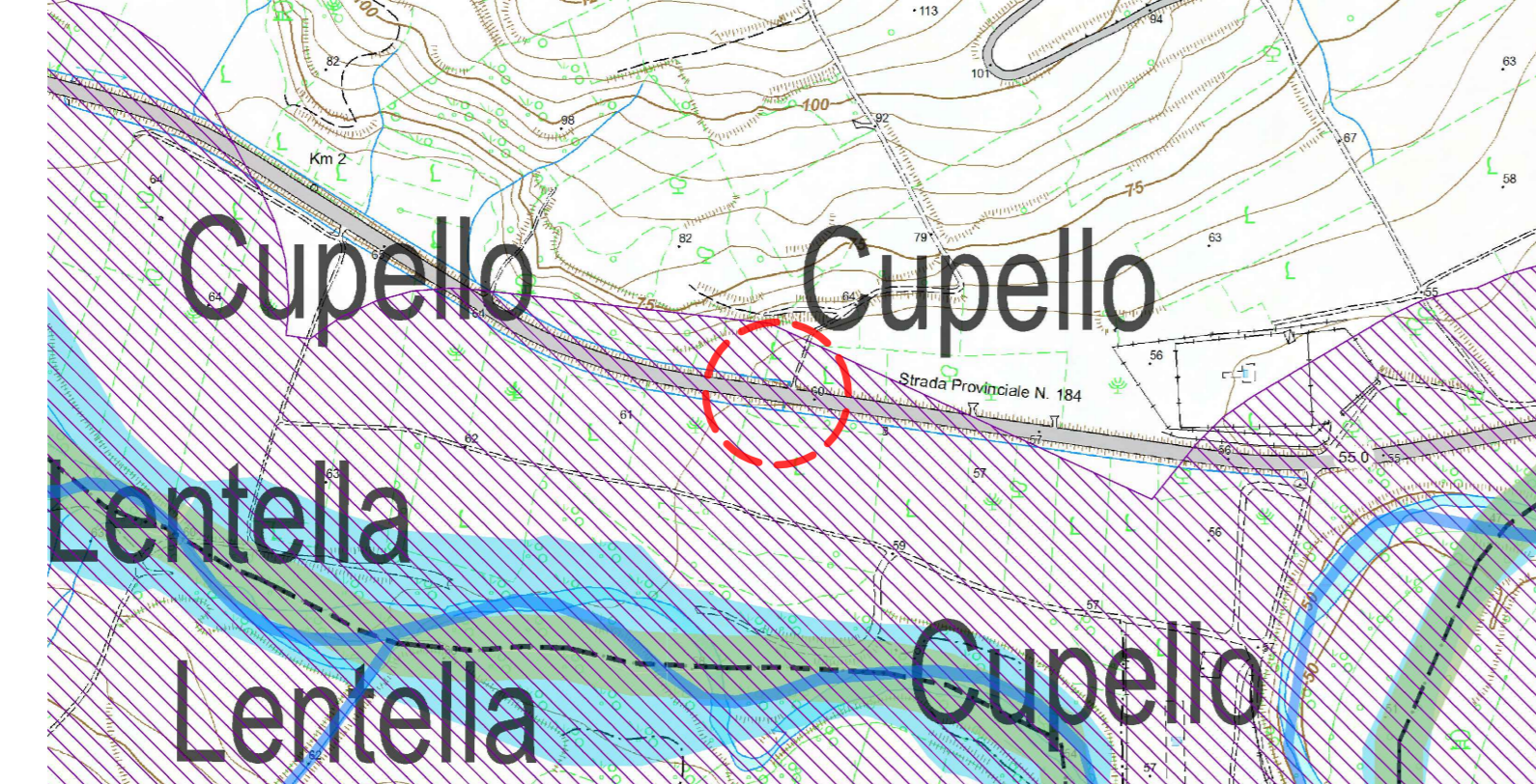


Foto - Interferenza 23



Inquadramento su CTR



Ortofoto con vincolo



Pianta e sezione Y - Interferenza 23

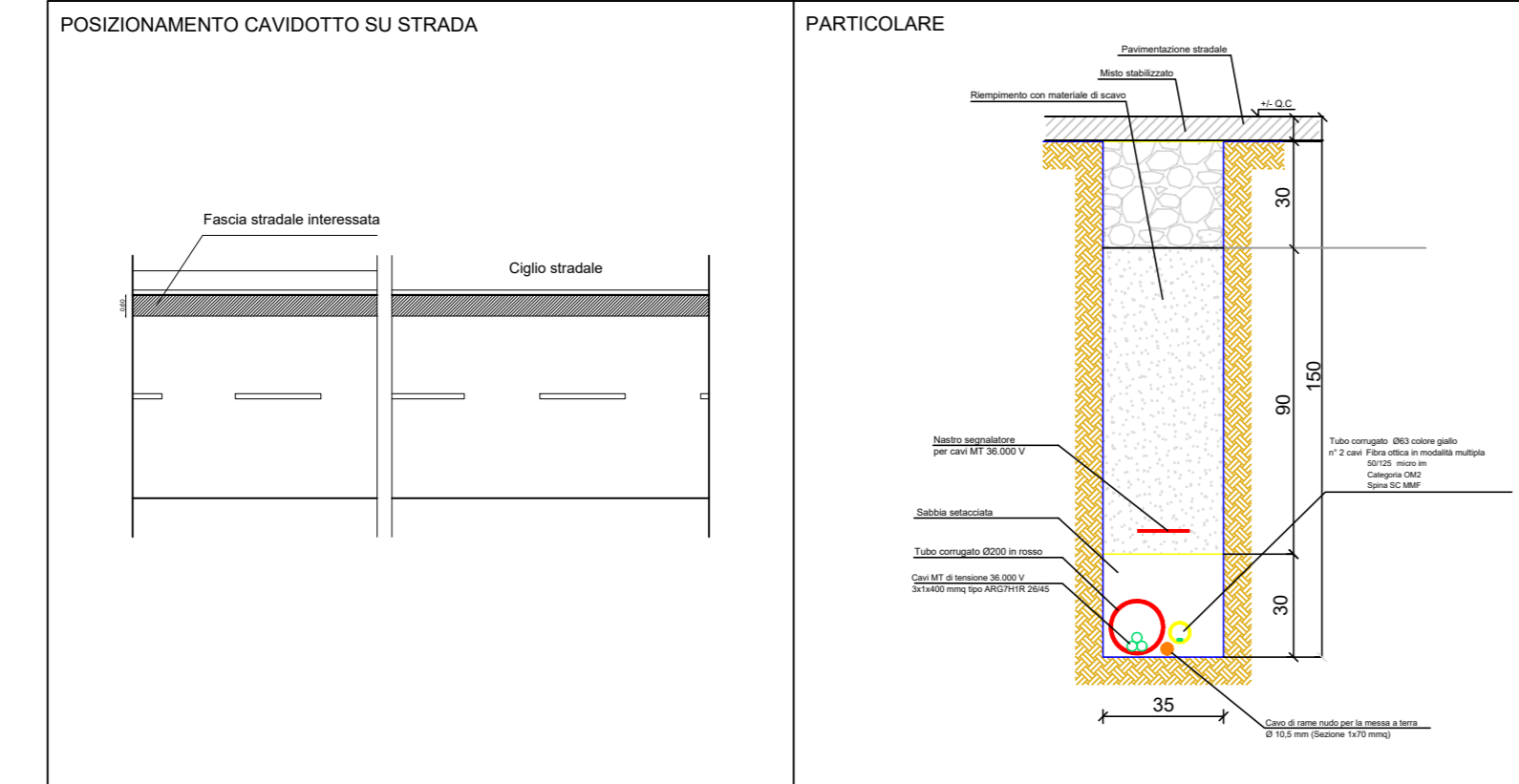
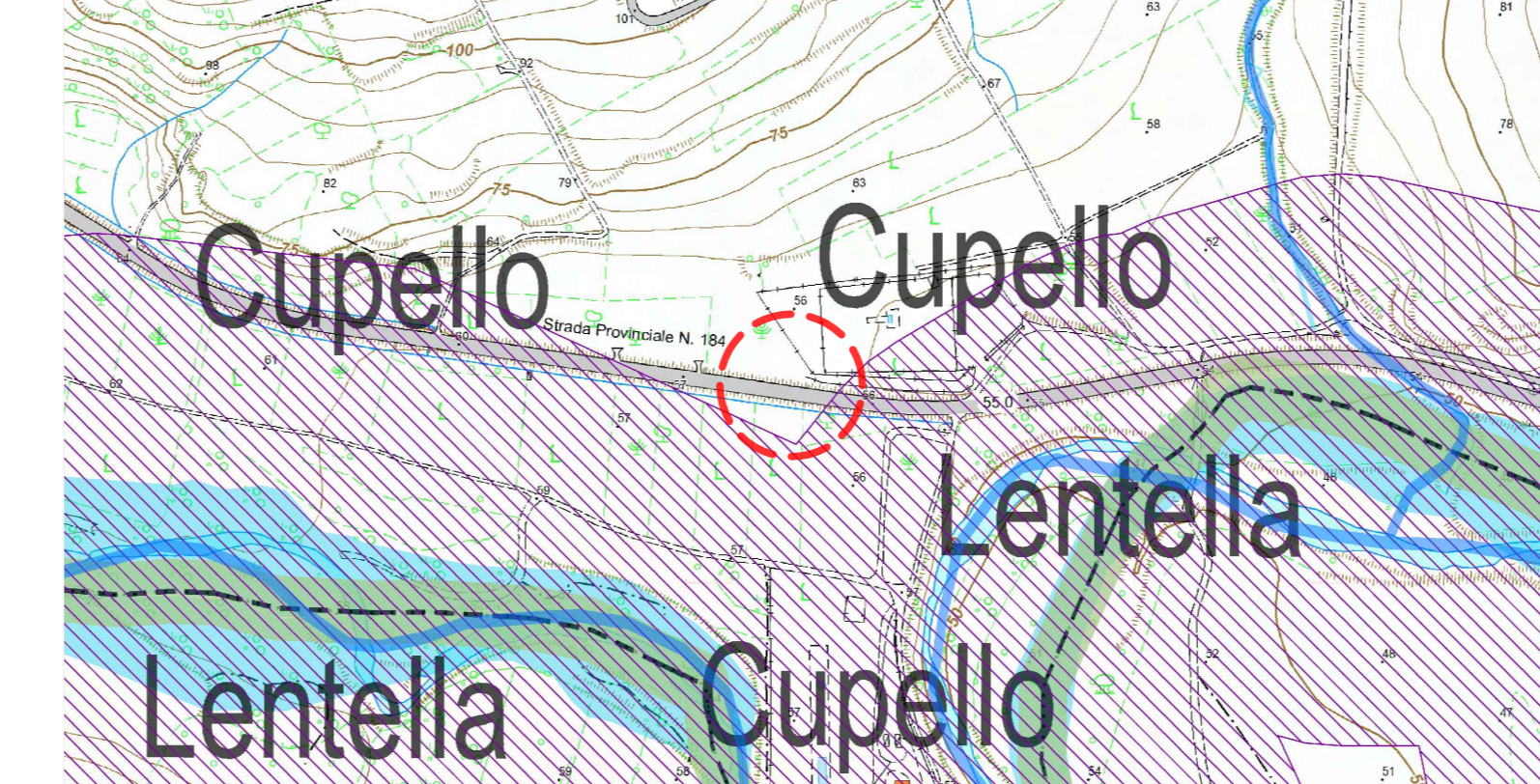


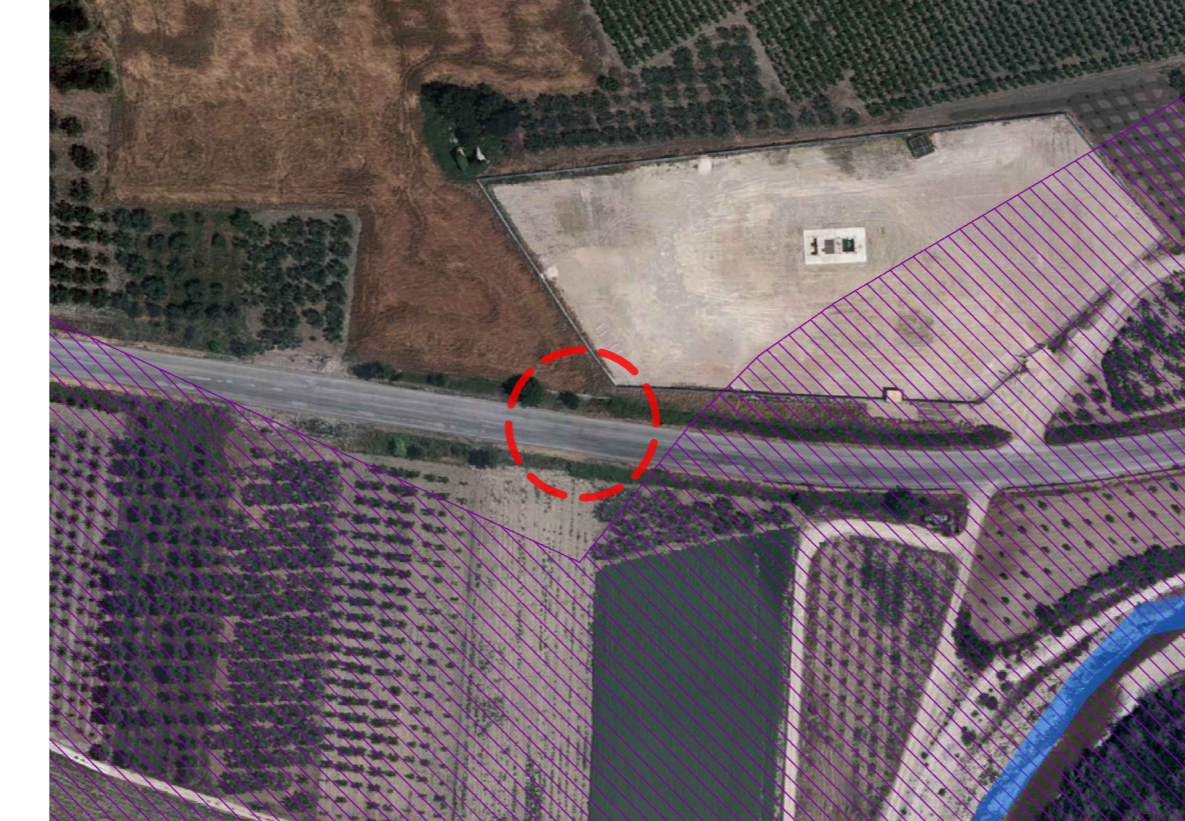
Foto - Interferenza 24



Inquadramento su CTR



Ortofoto con vincolo



Pianta e sezione Z - Interferenza 24

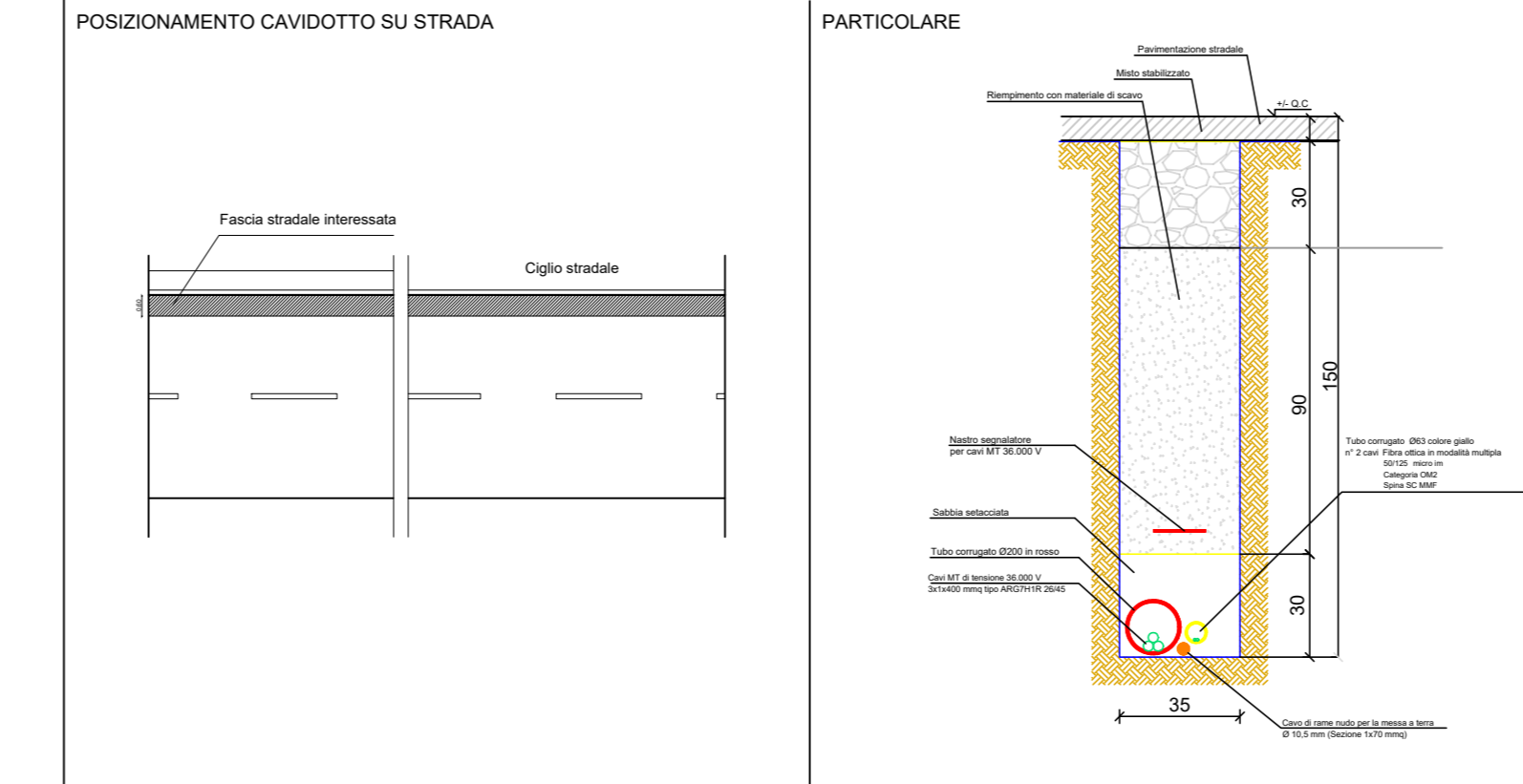
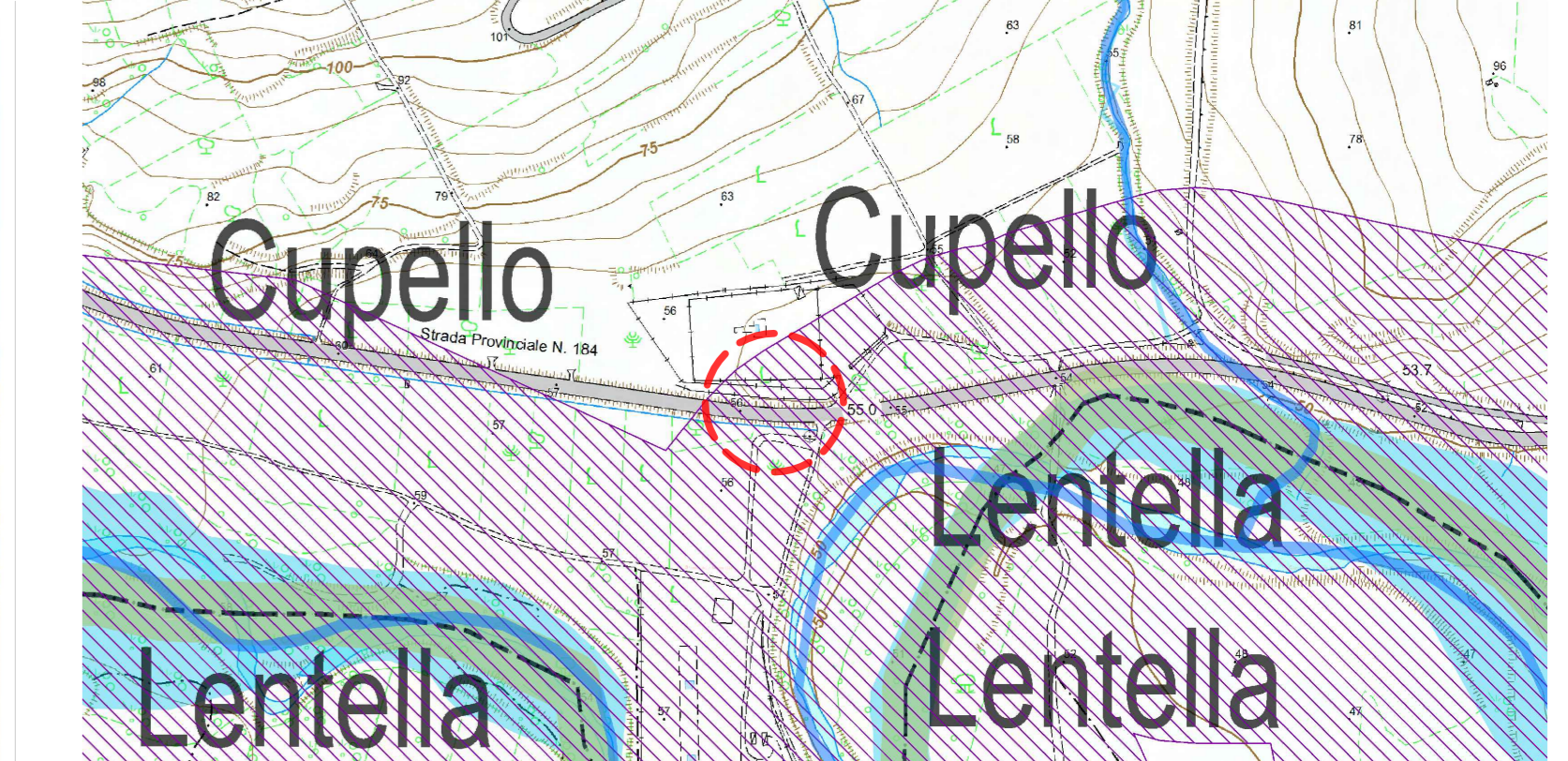


Foto - Interferenza 25



Inquadramento su CTR



Ortofoto con vincolo



Pianta e sezione A' - Interferenza 25

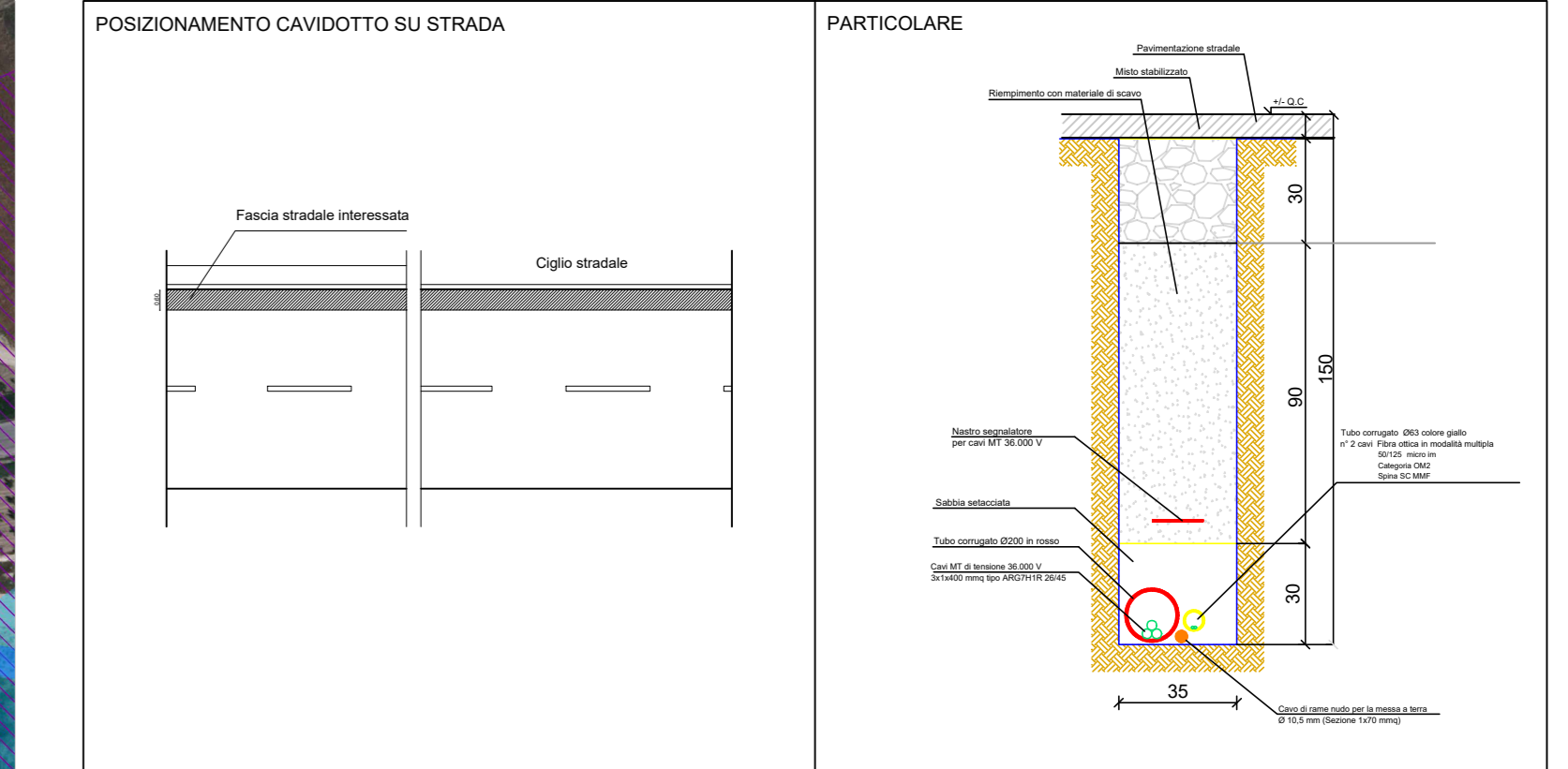
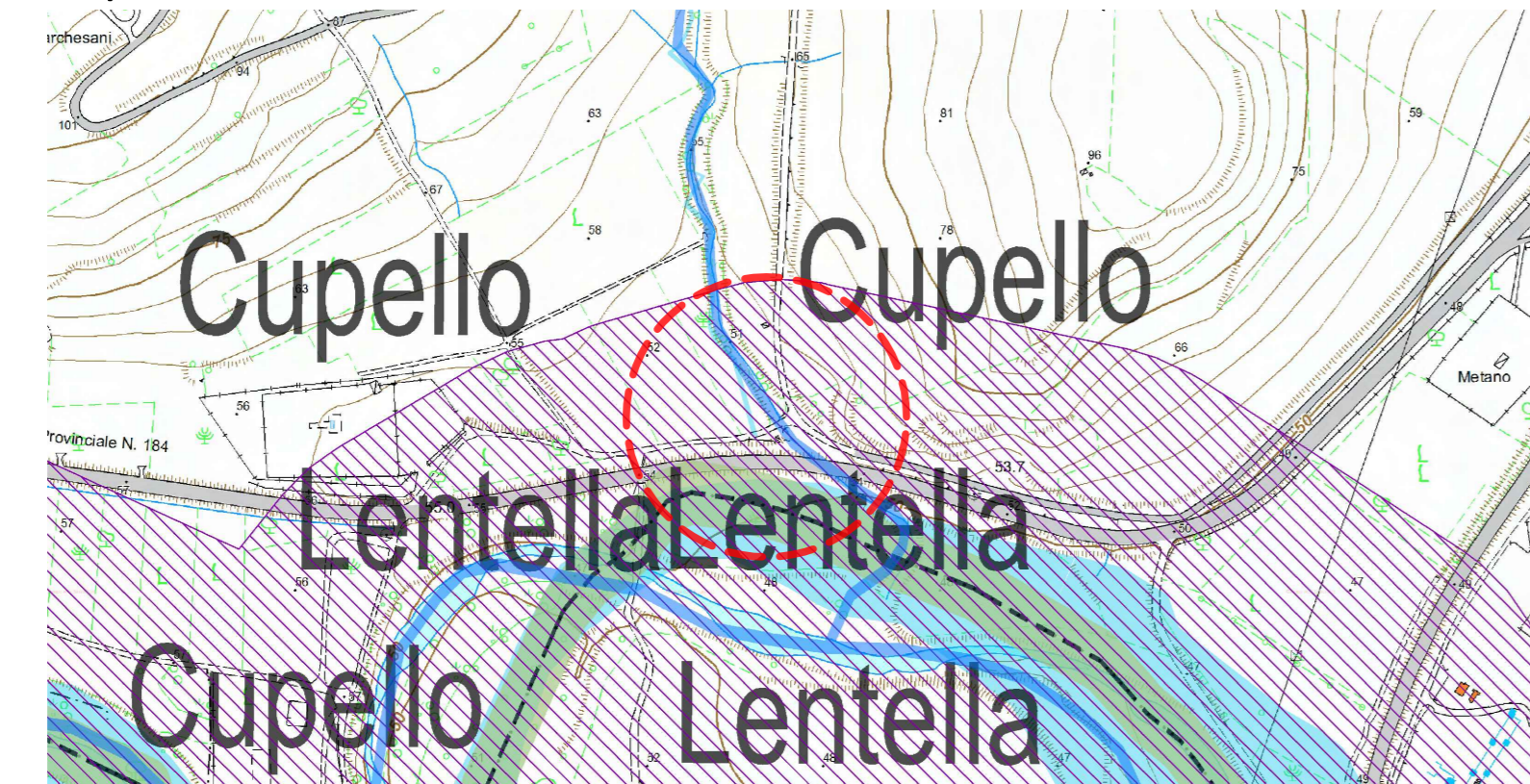


Foto - Interferenza 26



Inquadramento su CTR



Ortofoto con vincolo



Pianta e sezione B' - Interferenza 26

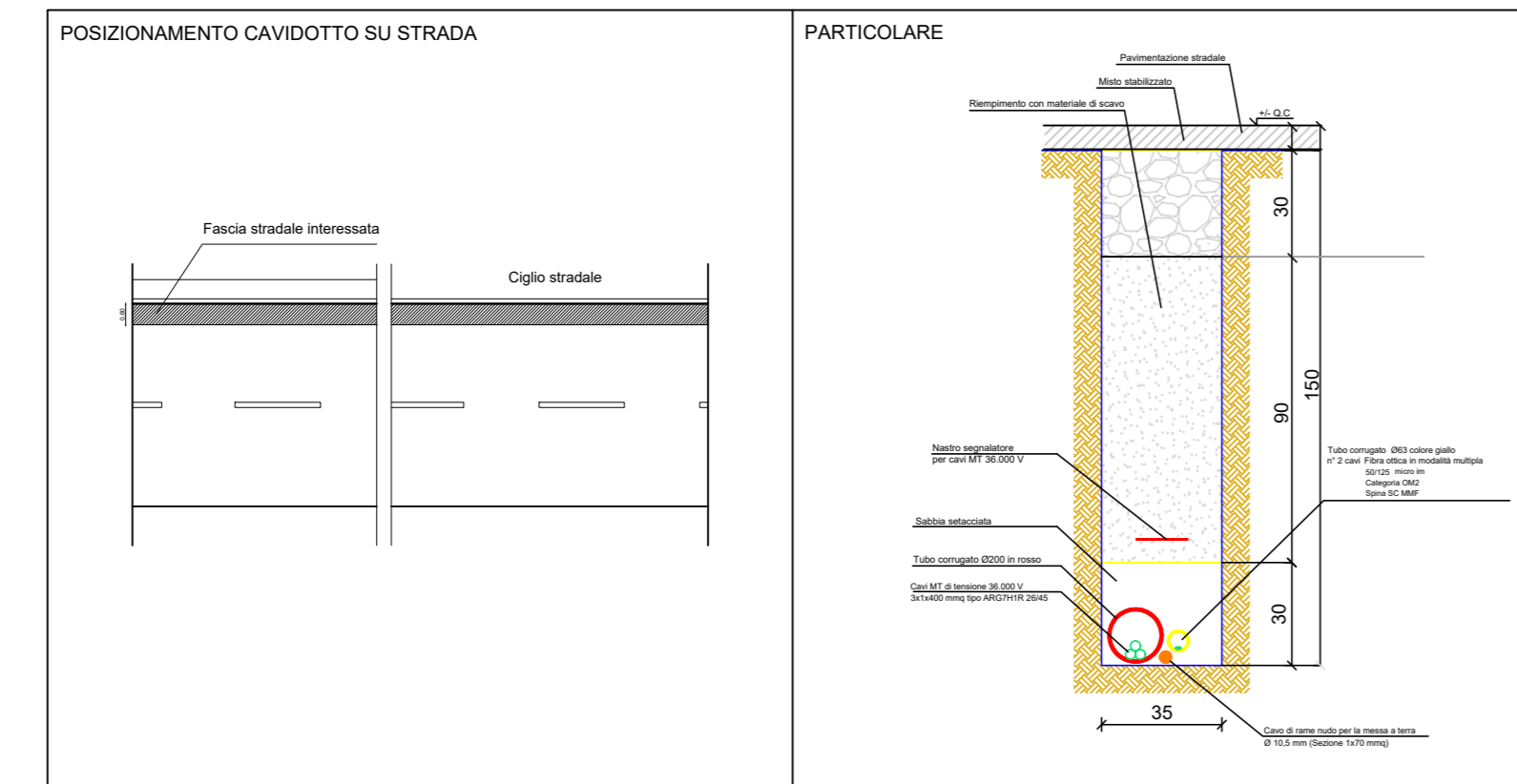
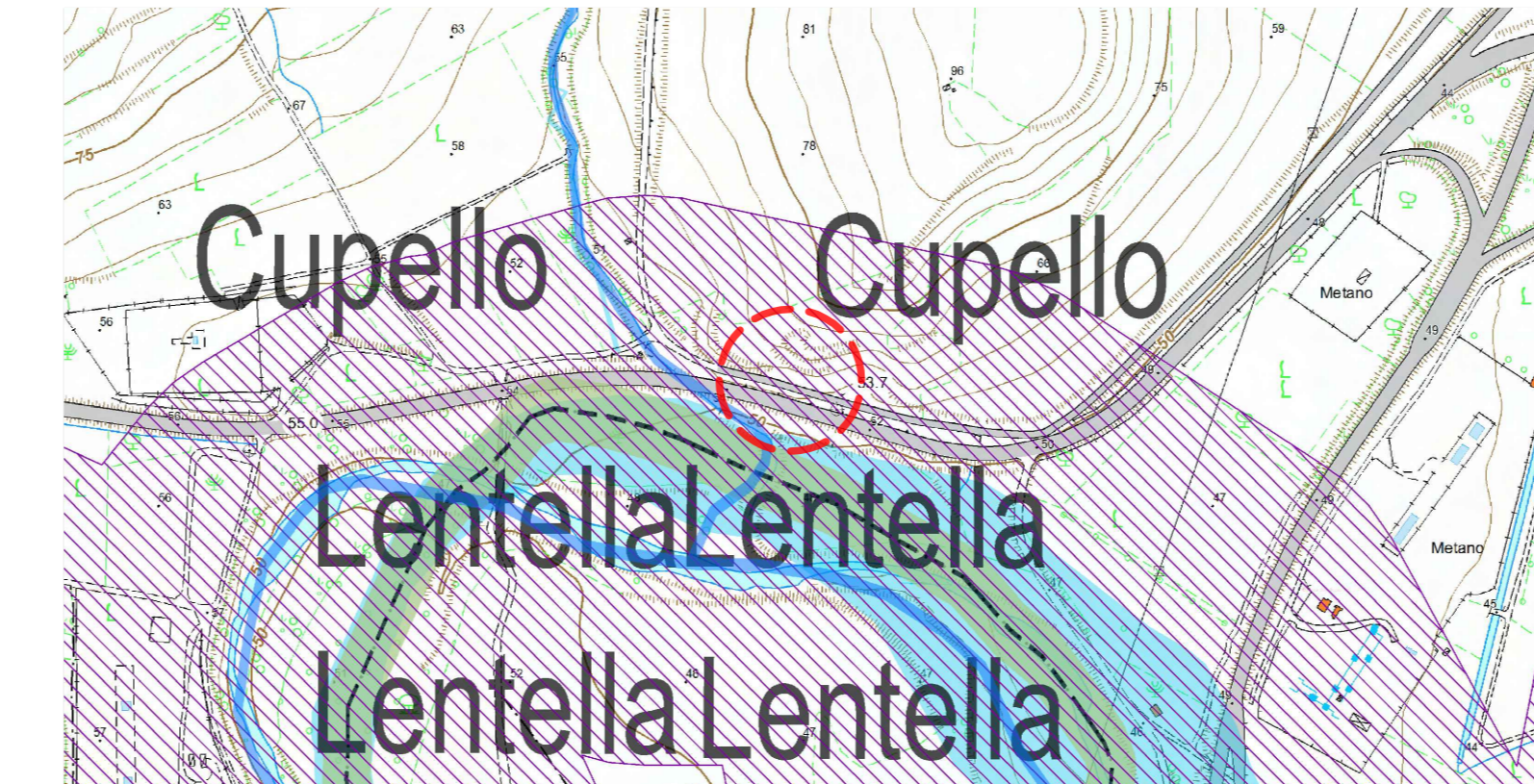


Foto - Interferenza 27



Inquadramento su CTR



Ortofoto con vincolo



Pianta e sezione C' - Interferenza 27

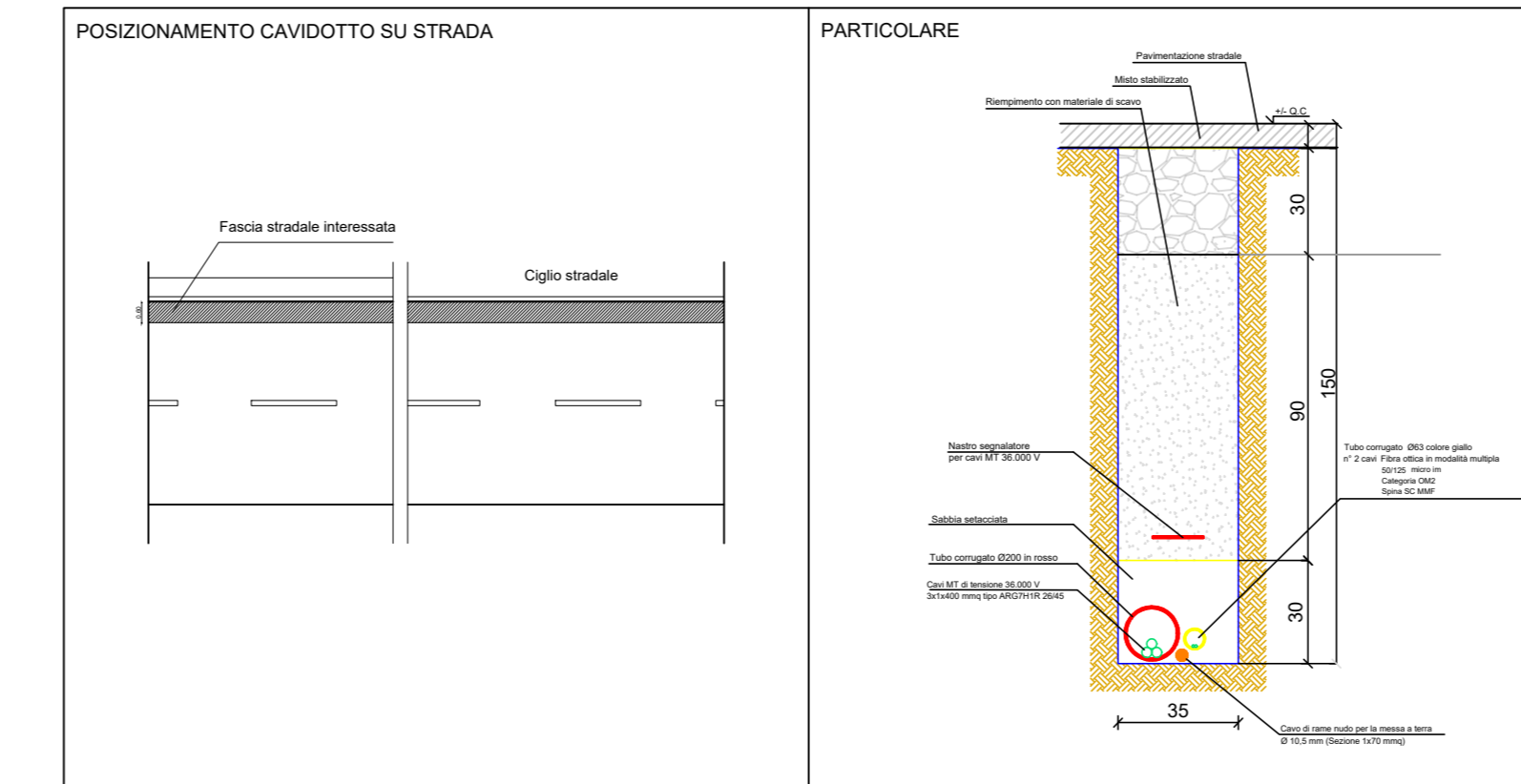
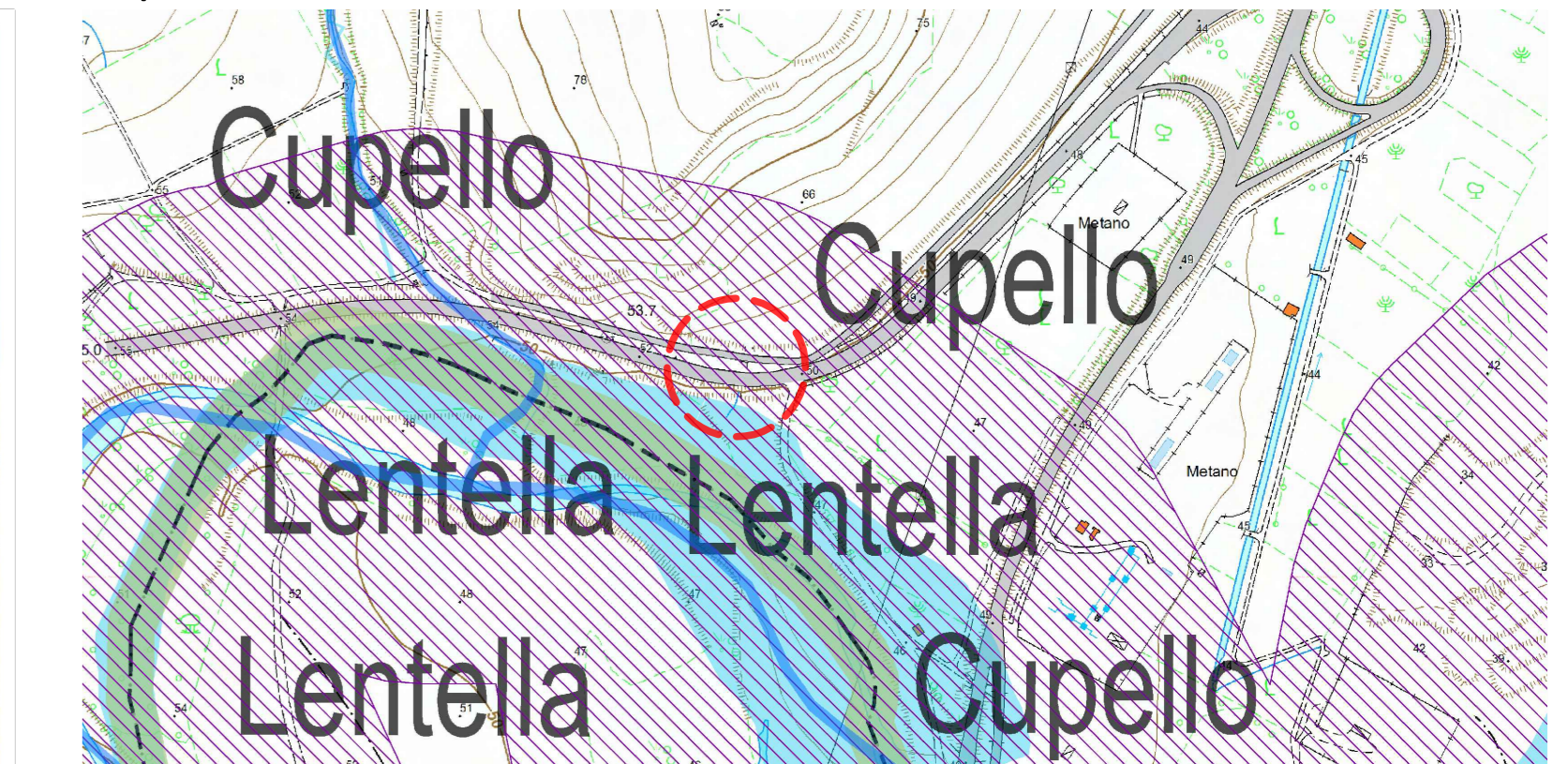


Foto - Interferenza 28



Inquadramento su CTR



Ortofoto con vincolo



Pianta e sezione D' - Interferenza 28

