

REGIONE ABRUZZO
COMUNE DI FURCI
 Provincia di Chieti

loc. Morge

REALIZZAZIONE E GESTIONE DI UN IMPIANTO FOTOVOLTAICO DELLA POTENZA NOMINALE DI 53.69 MW CON RELATIVE OPERE DI CONNESSIONE ALLA RETE ELETTRICA NAZIONALE

PROGETTISTA: **Expand** - Salerno - Ing. Teodoro Dattaglini
 SOCIETÀ: **soc. ARAN 1 srl** - via Fratelli Ruspoli 8 00198 Roma
 STUDIO TECNICO: **POWER PROJECT** - Studio Tecnico - geom. Giancarlo Cioppa

OGGETTO: **PROGETTO DEFINITIVO**
CARTA DELLE INTERFERENZE

DATA: **Febbraio 2023**
 STATO: **Varie**
 ELABORAZIONE: **AD**
 VERSIONE: **F_4.1.g**

Individuazione delle interferenze lungo il percorso del cavidotto di connessione

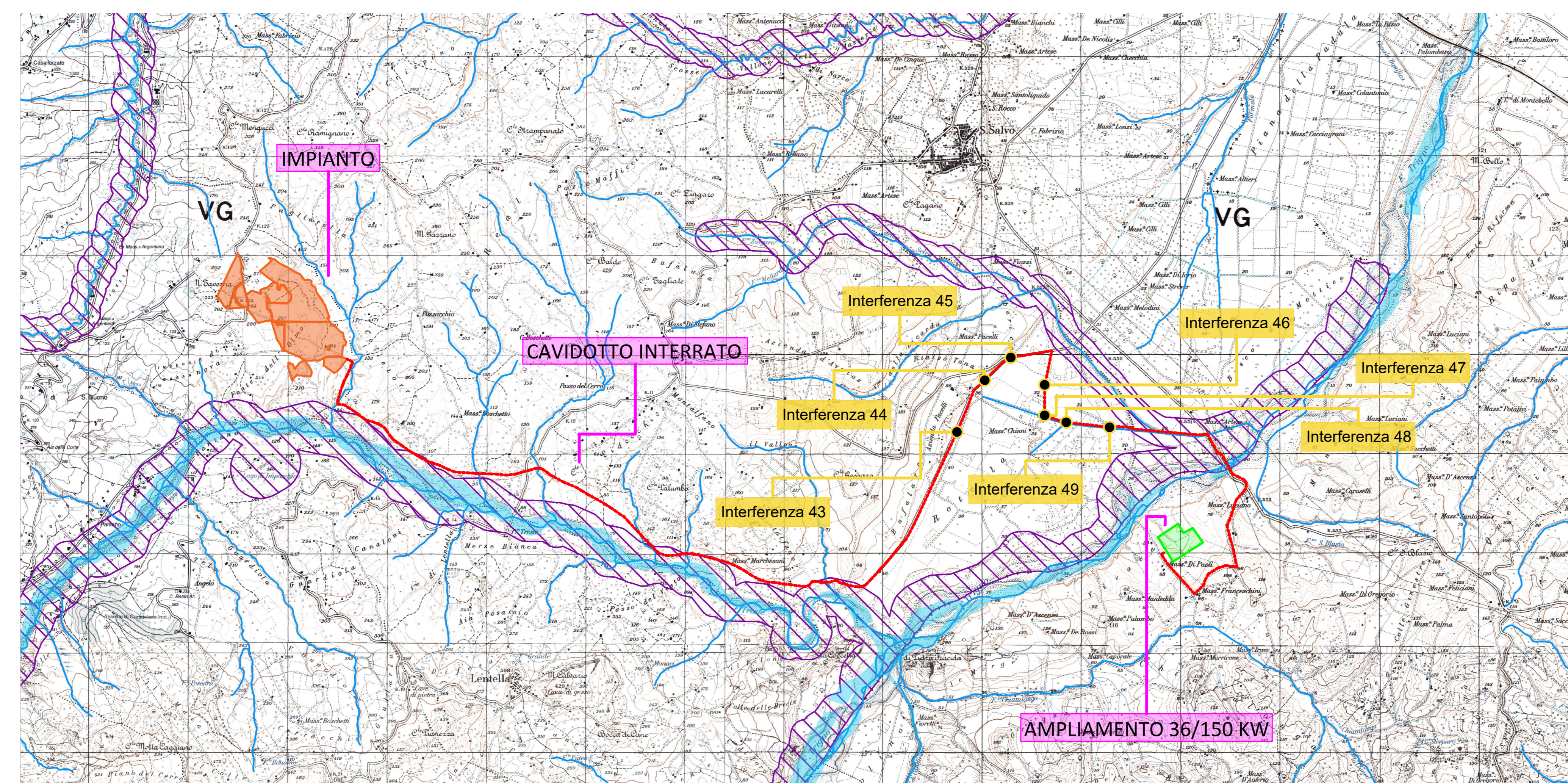
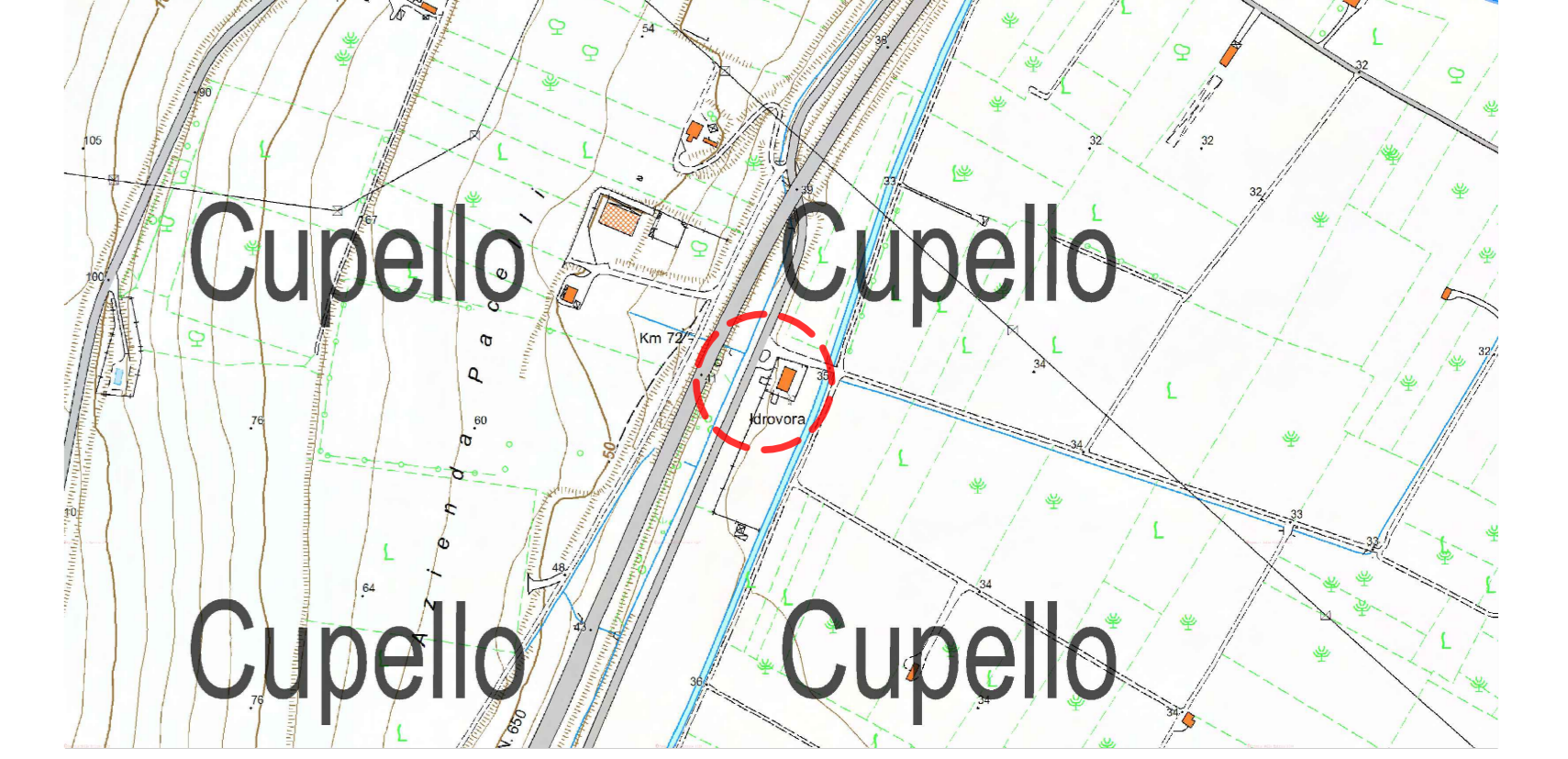


Foto - Interferenza 43



Inquadramento su CTR



Ortofoto con vincolo



Pianta e sezione T' - Interferenza 43

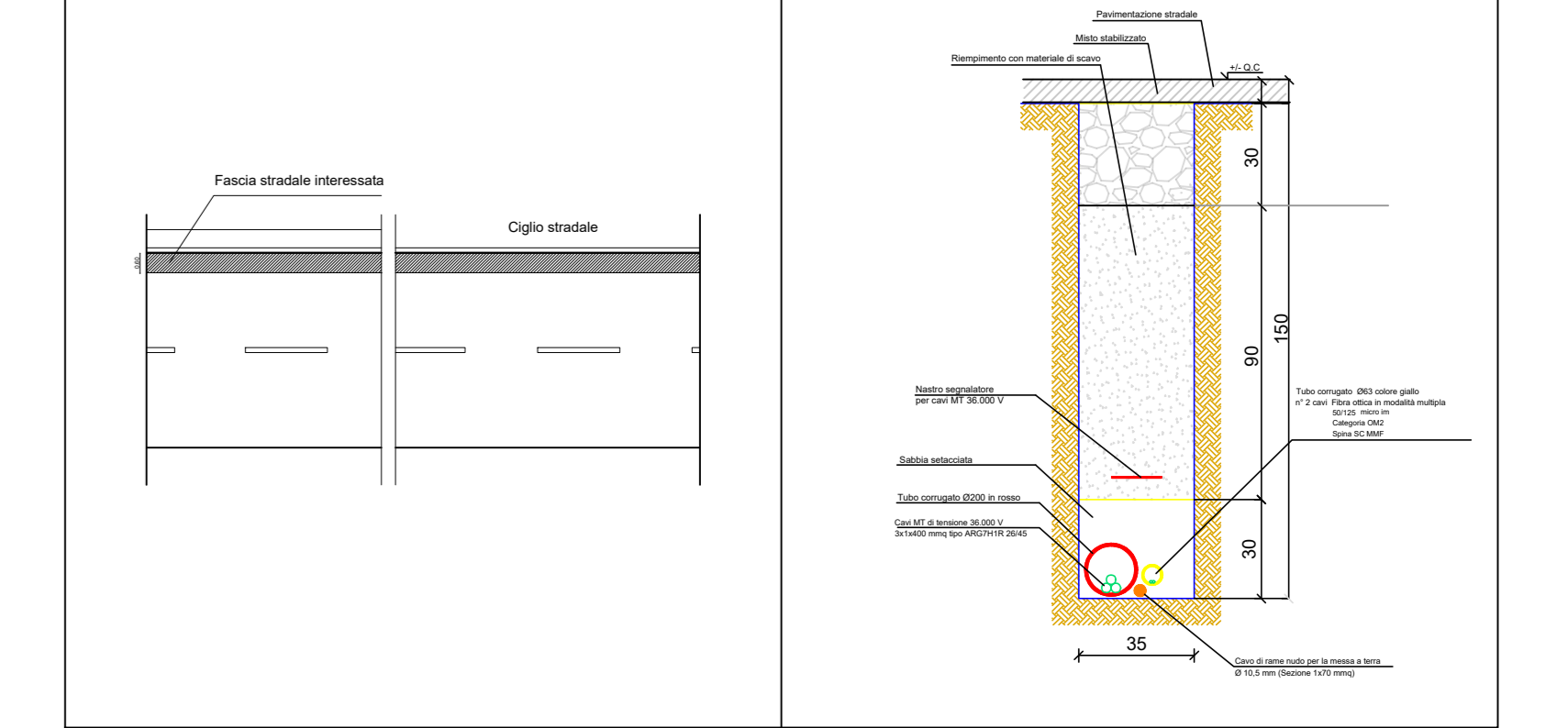
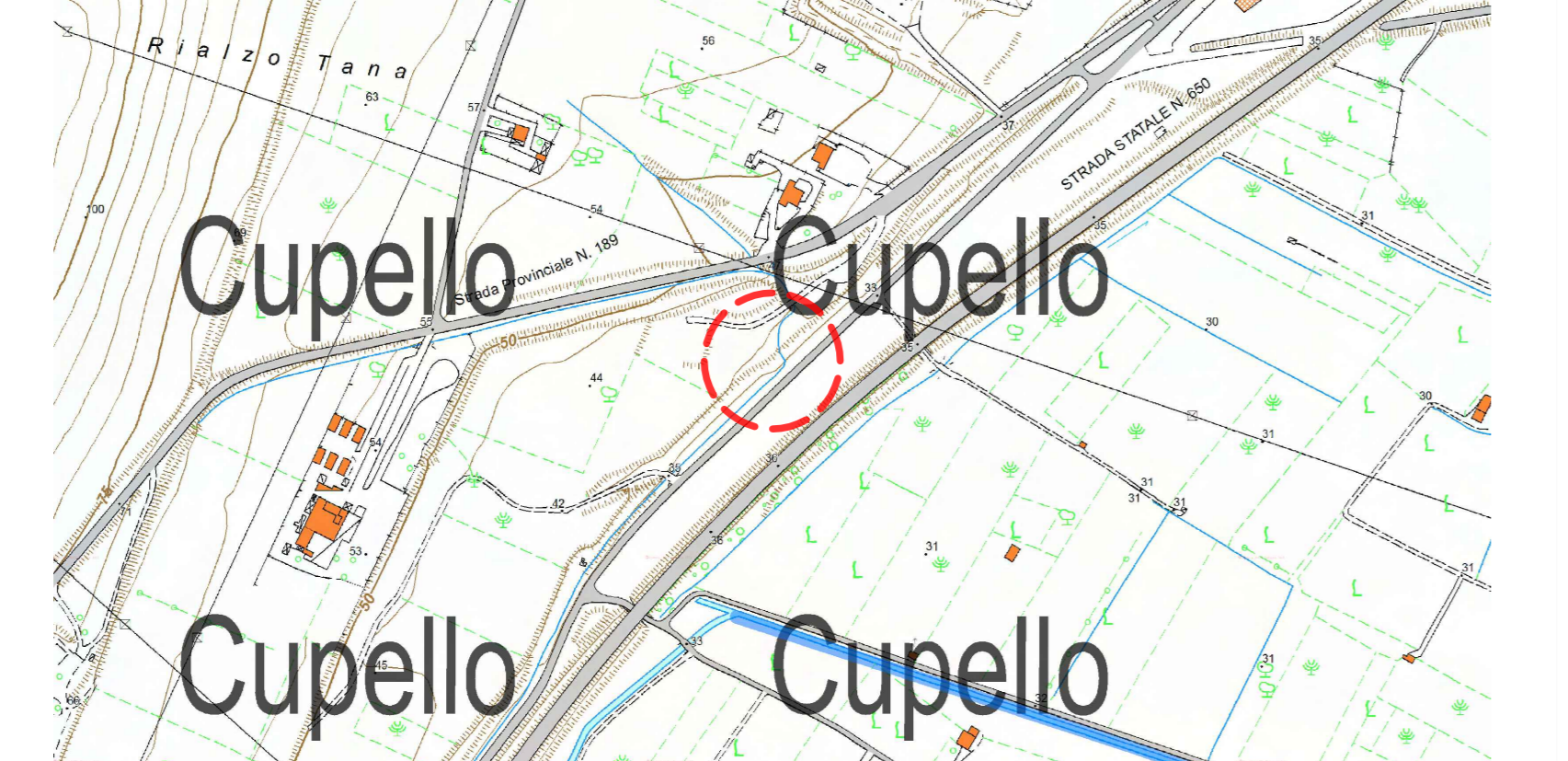


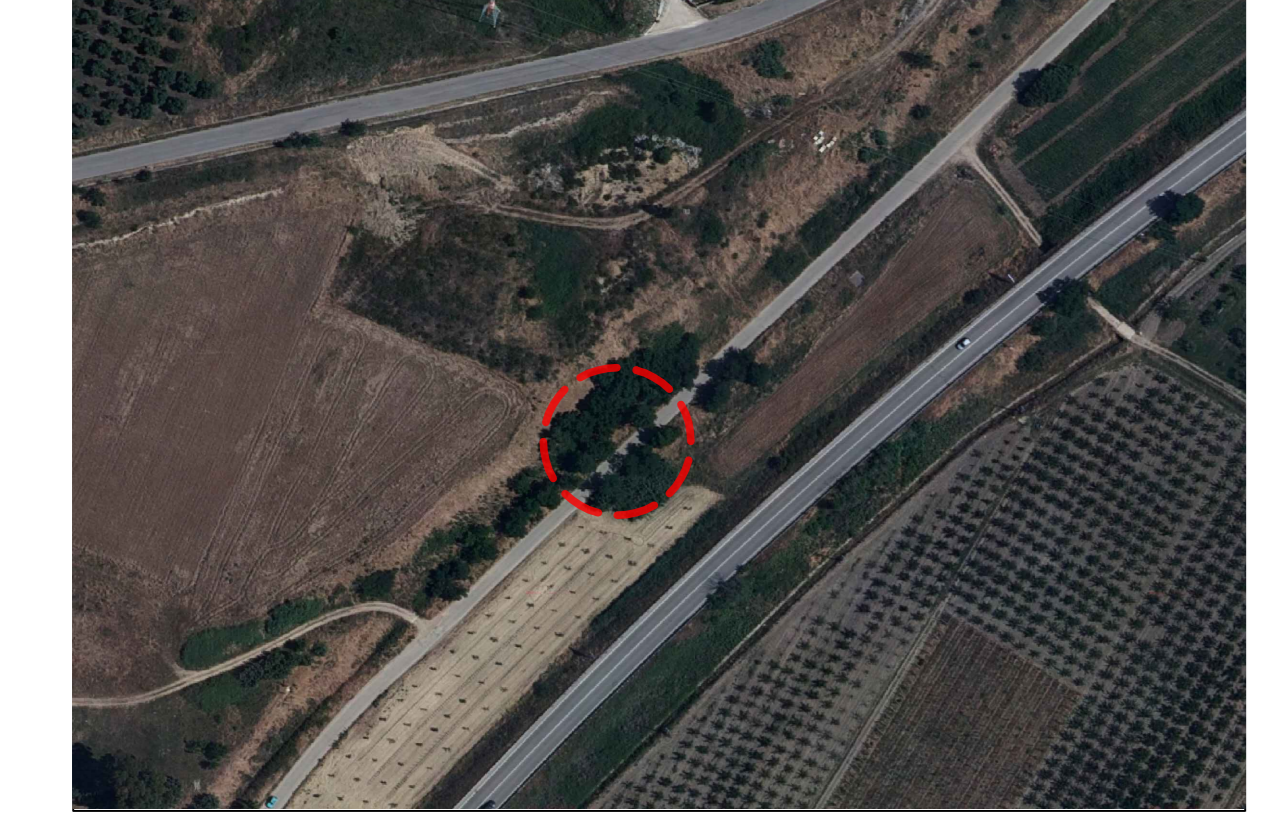
Foto - Interferenza 44



Inquadramento su CTR



Ortofoto con vincolo



Pianta e sezione U' - Interferenza 44

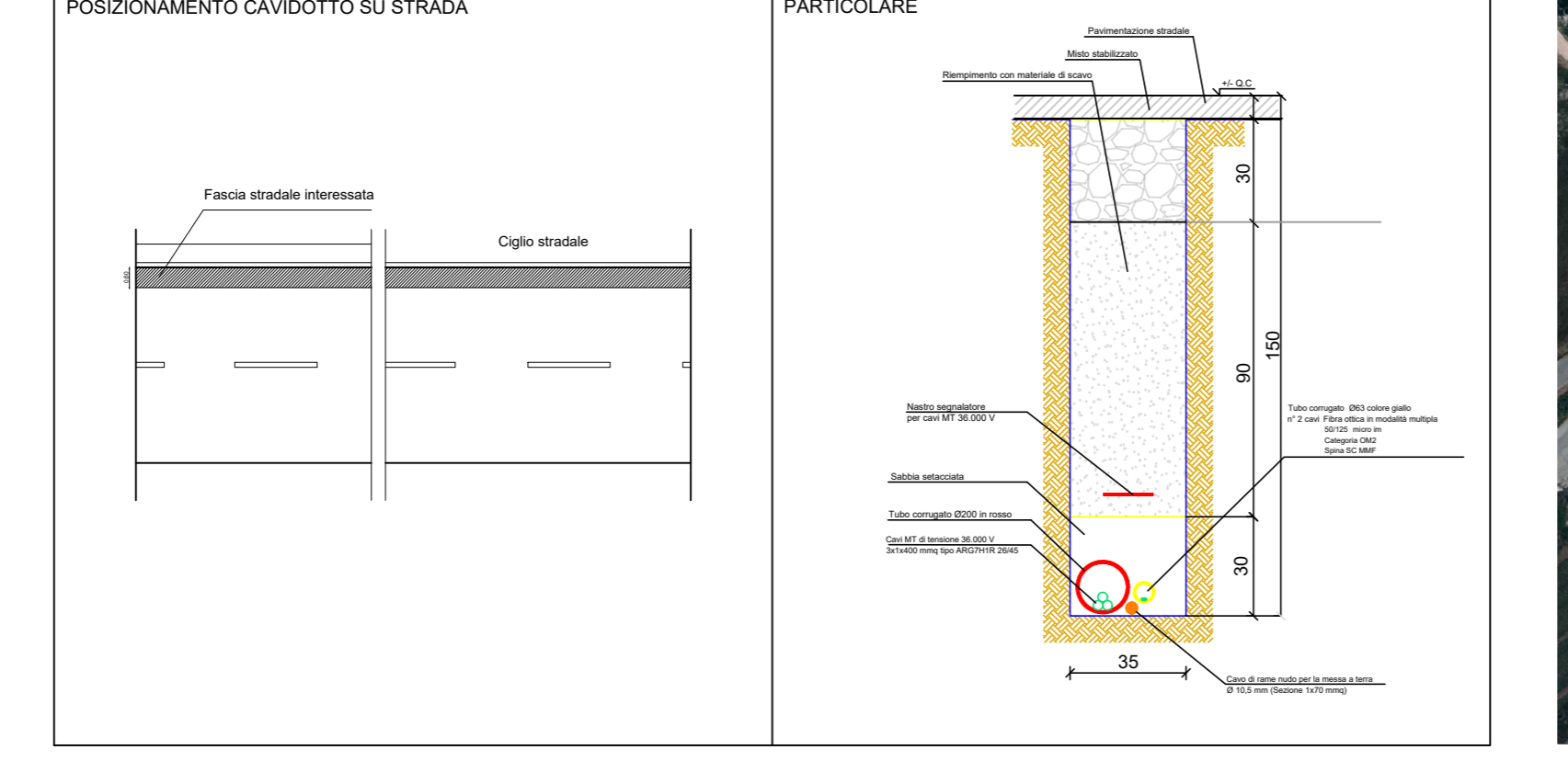
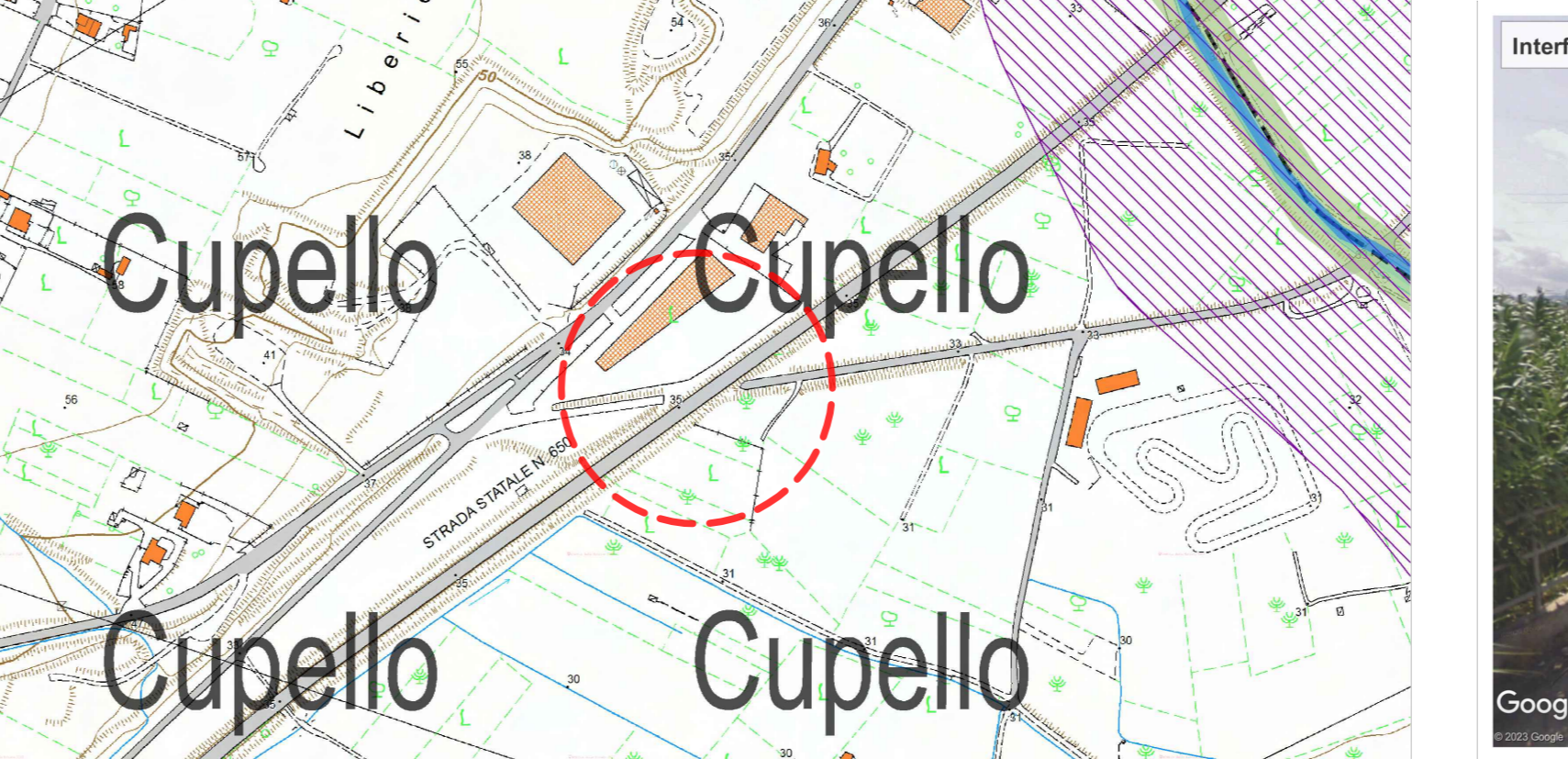


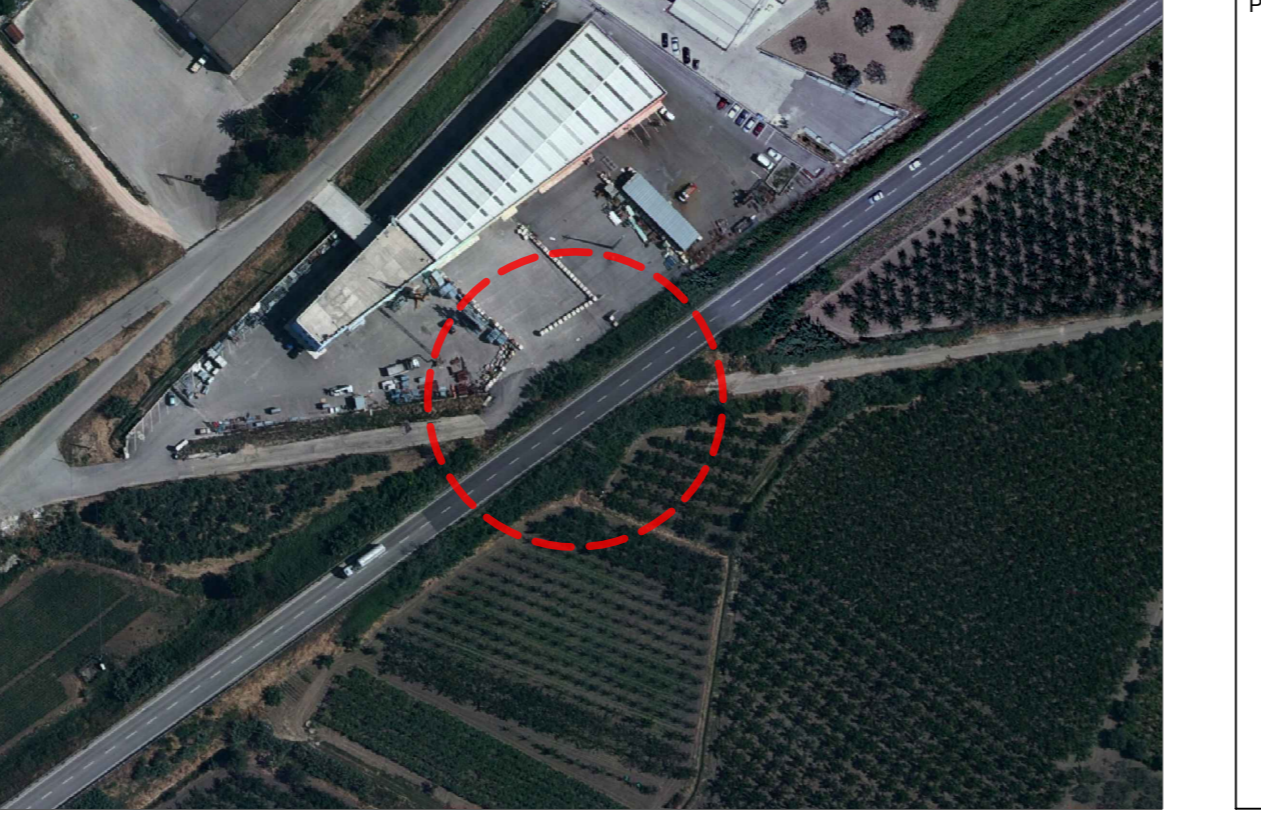
Foto - Interferenza 45



Inquadramento su CTR



Ortofoto con vincolo



Pianta e sezione V' - Interferenza 45

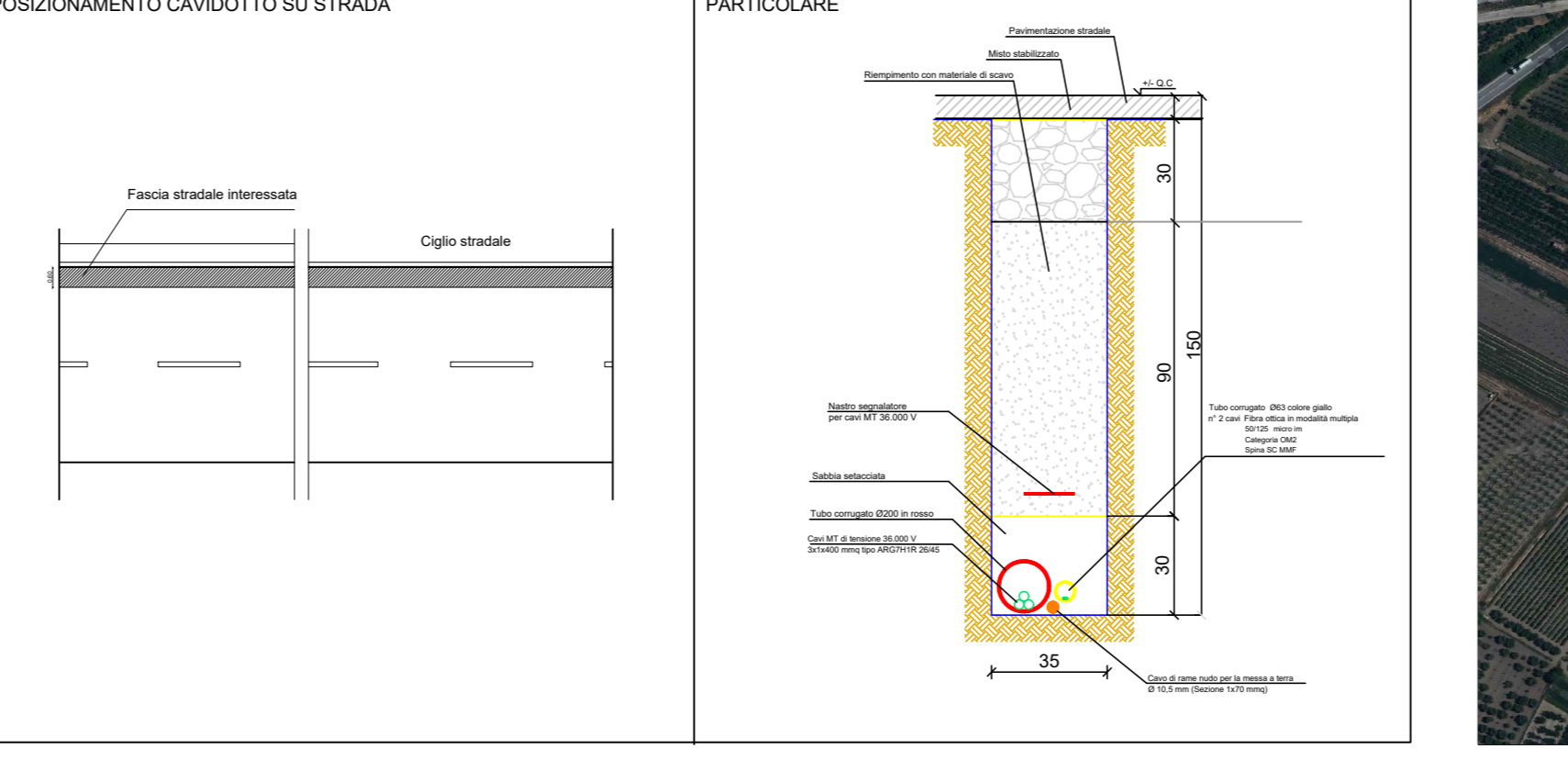
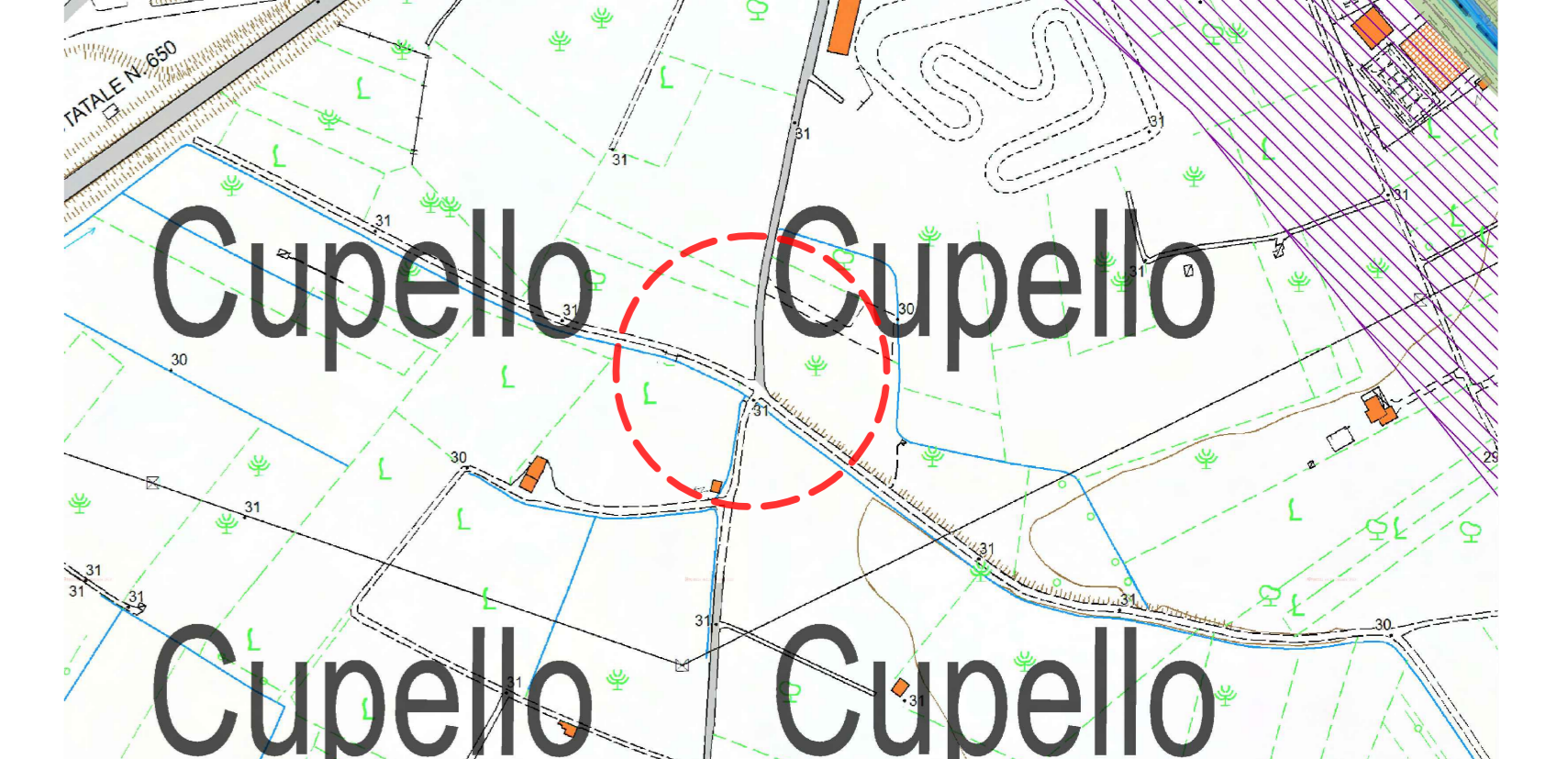


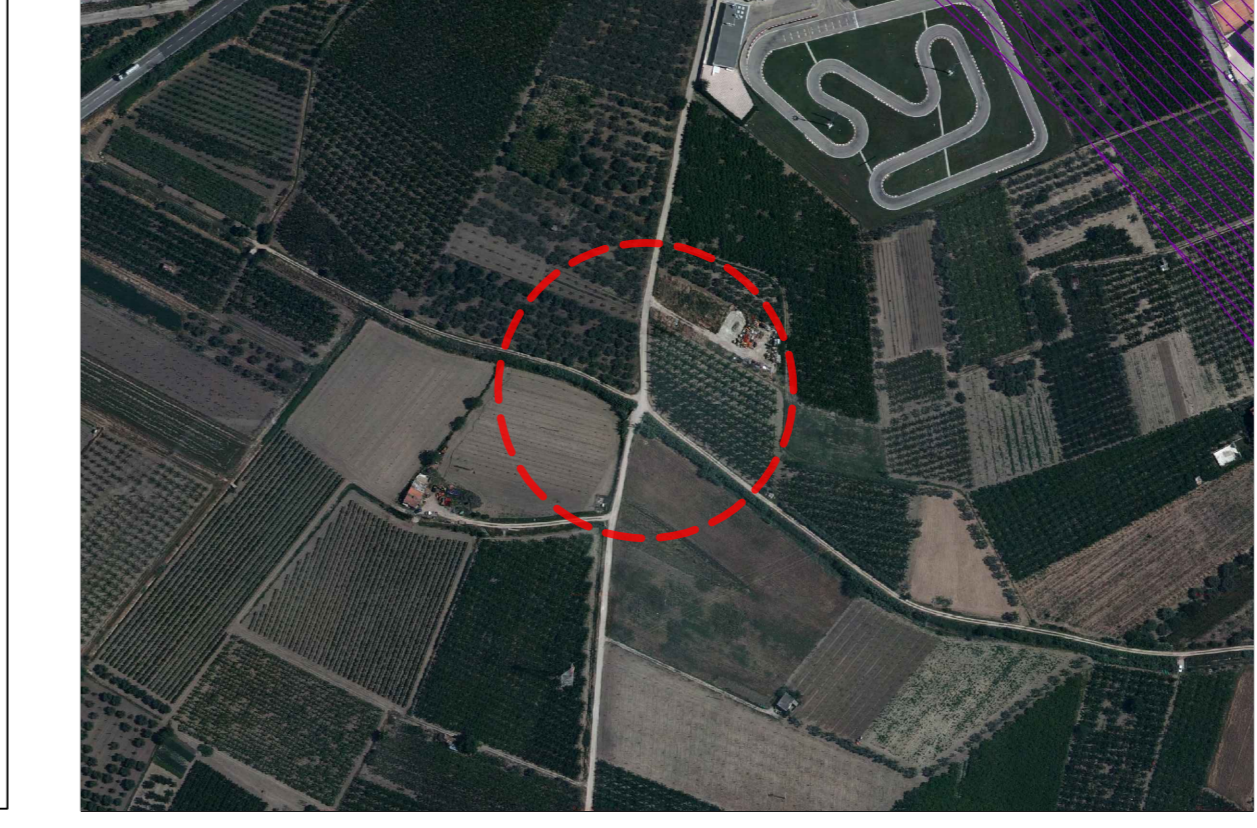
Foto - Interferenza 46



Inquadramento su CTR



Ortofoto con vincolo



Pianta e sezione X' - Interferenza 46

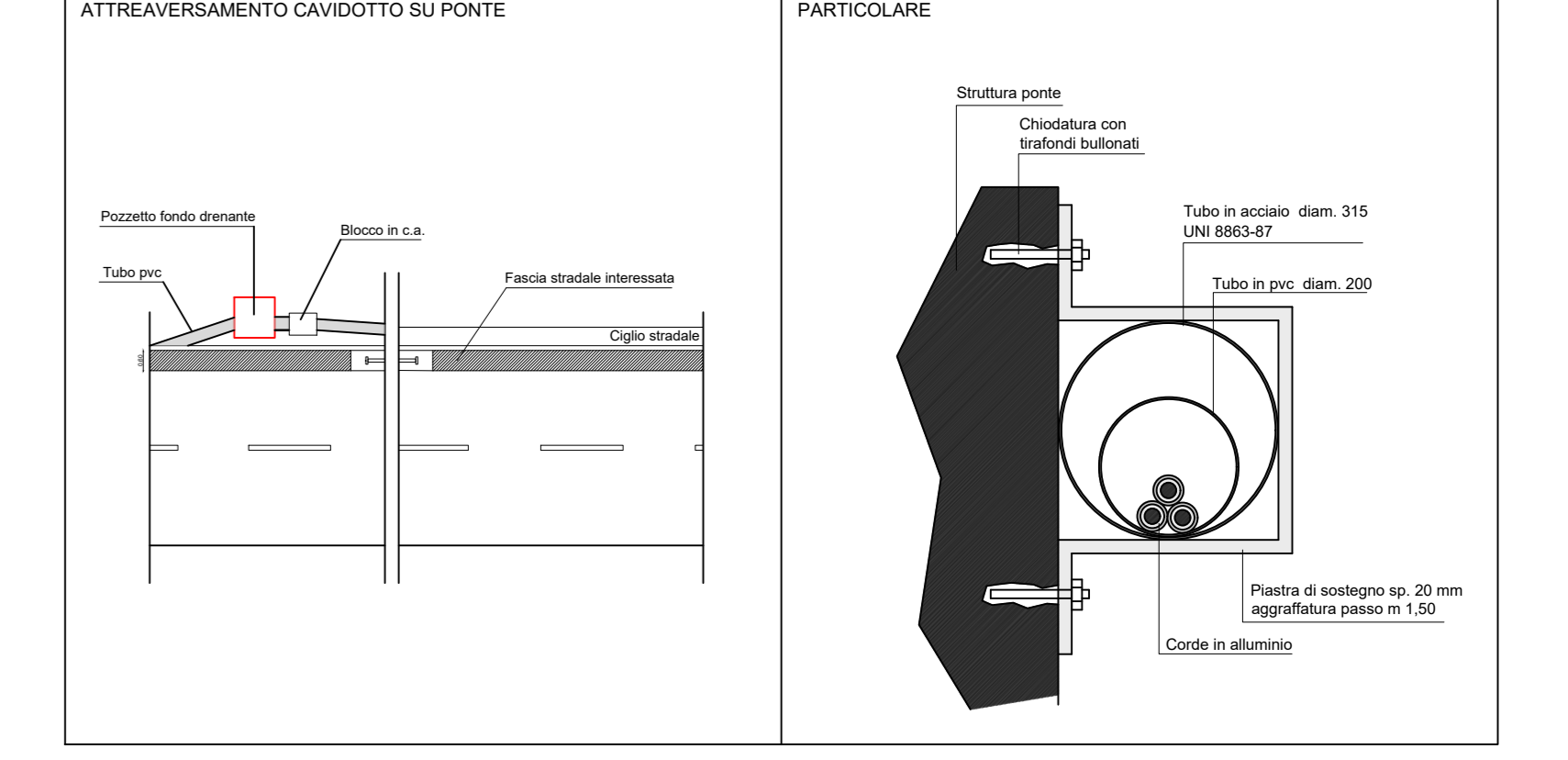
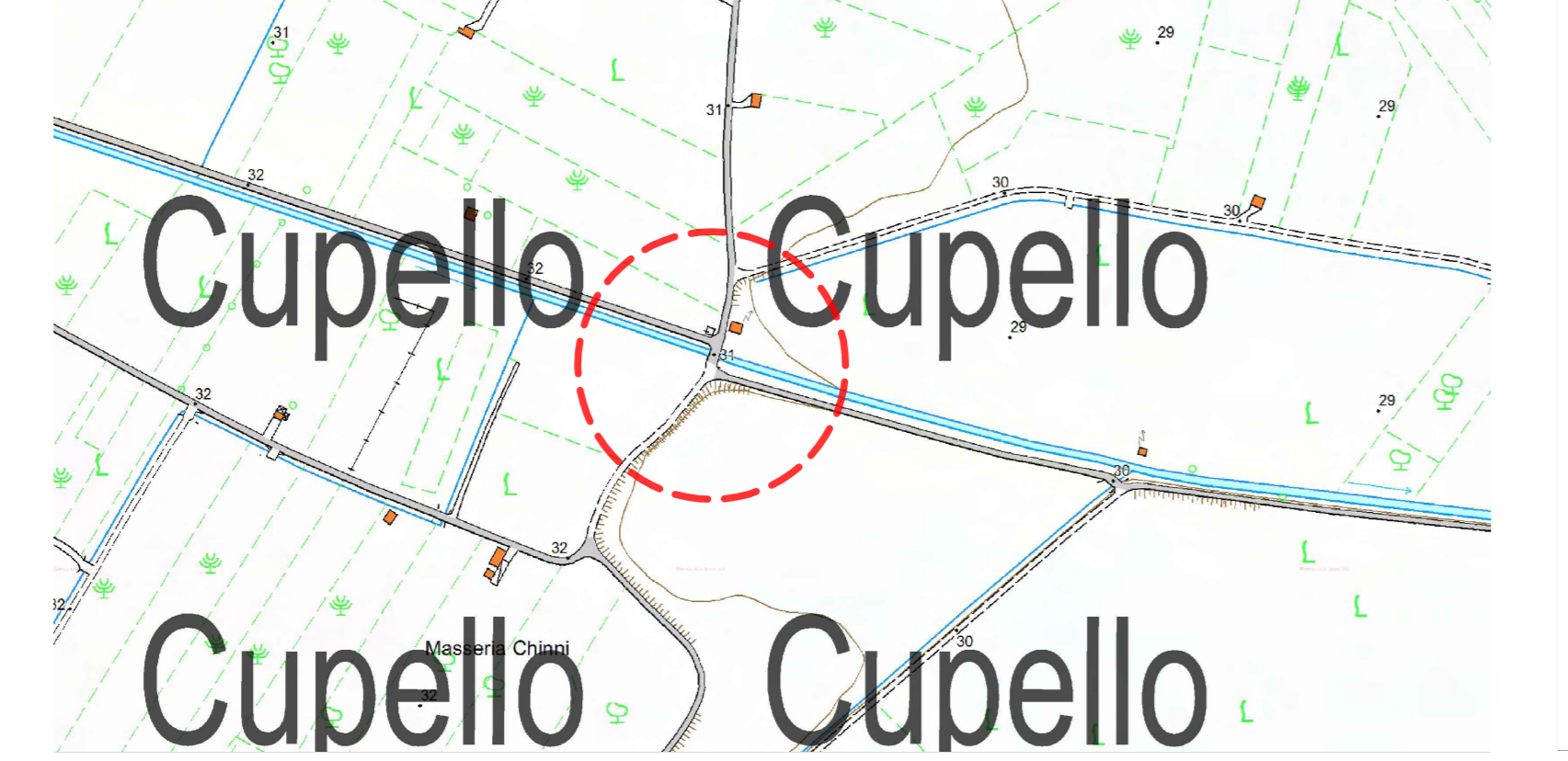


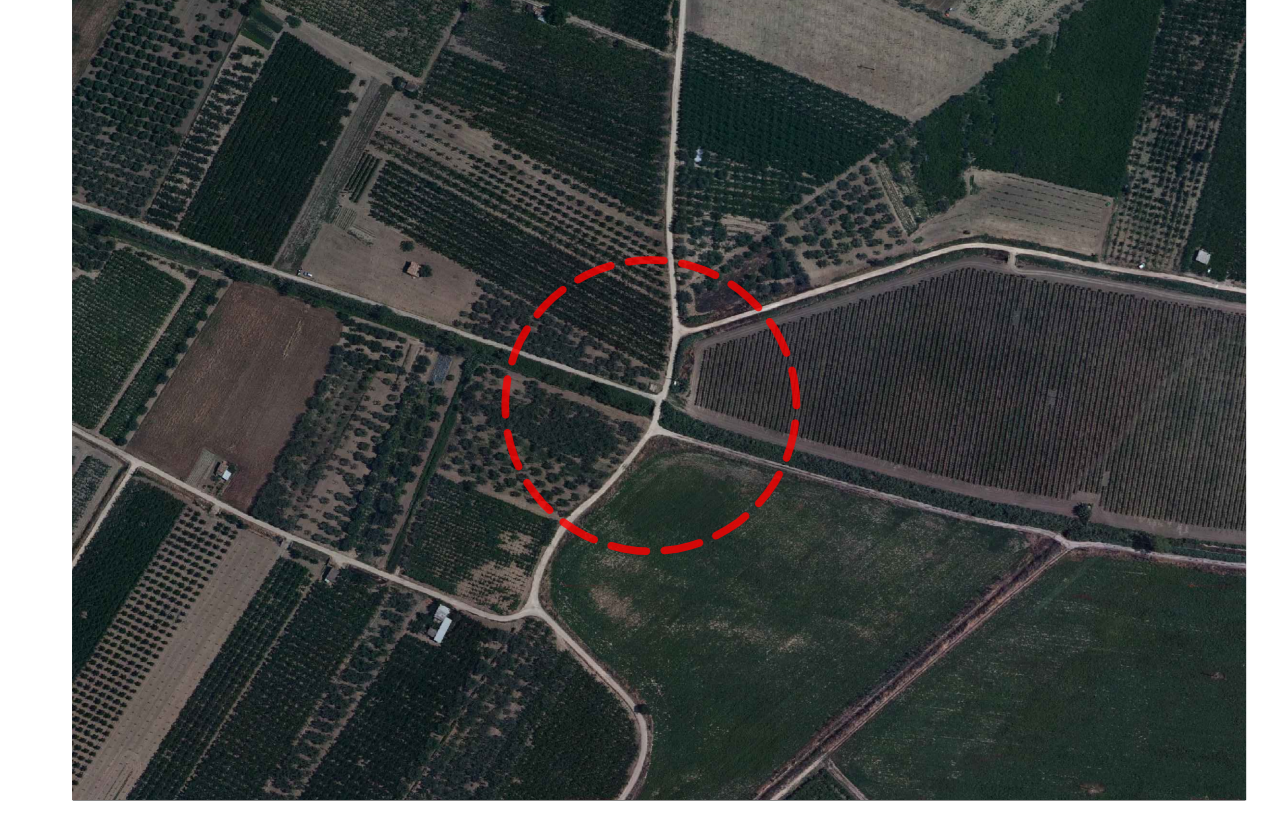
Foto - Interferenza 47



Inquadramento su CTR



Ortofoto con vincolo



Pianta e sezione Y' - Interferenza 47

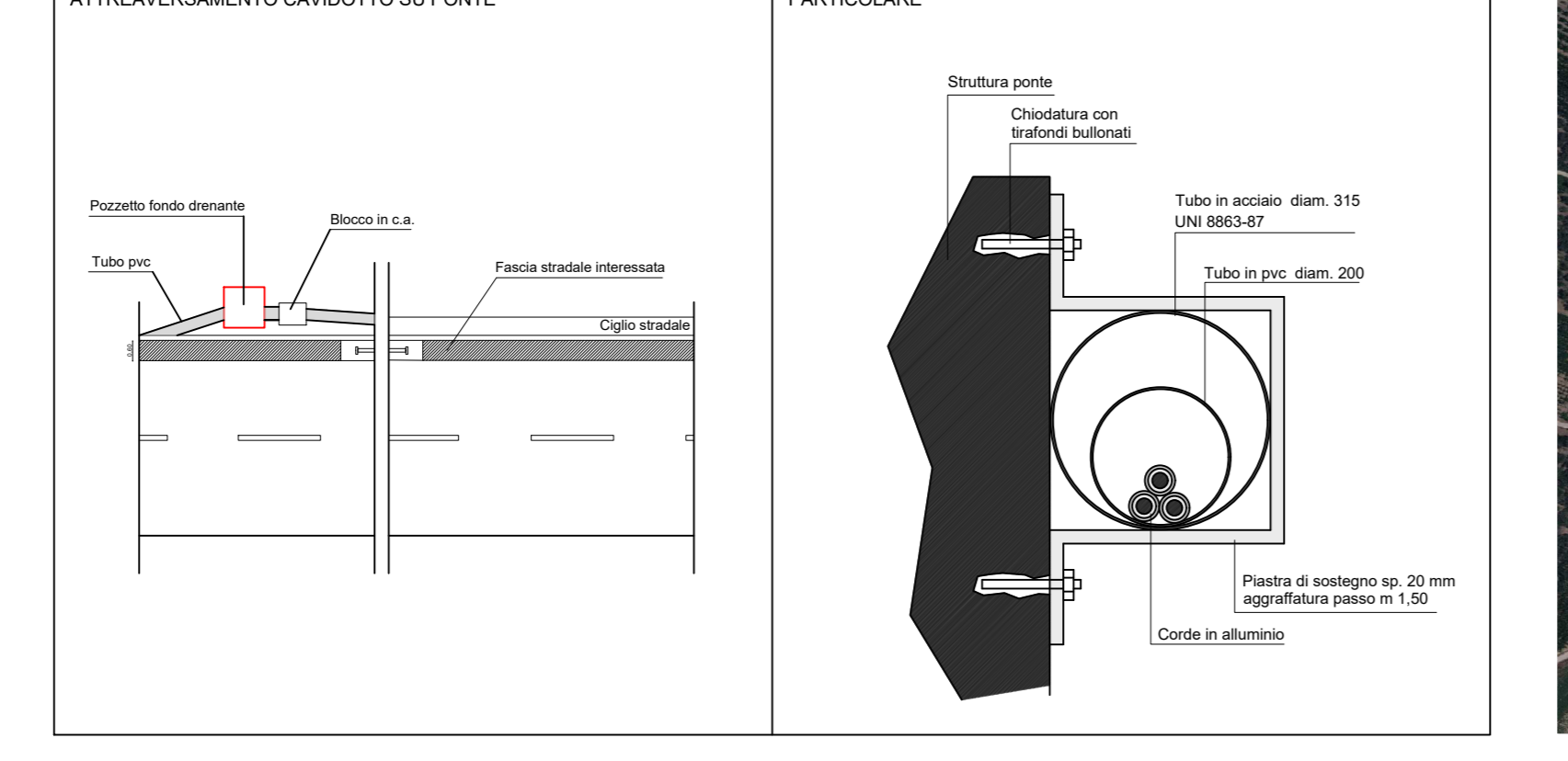
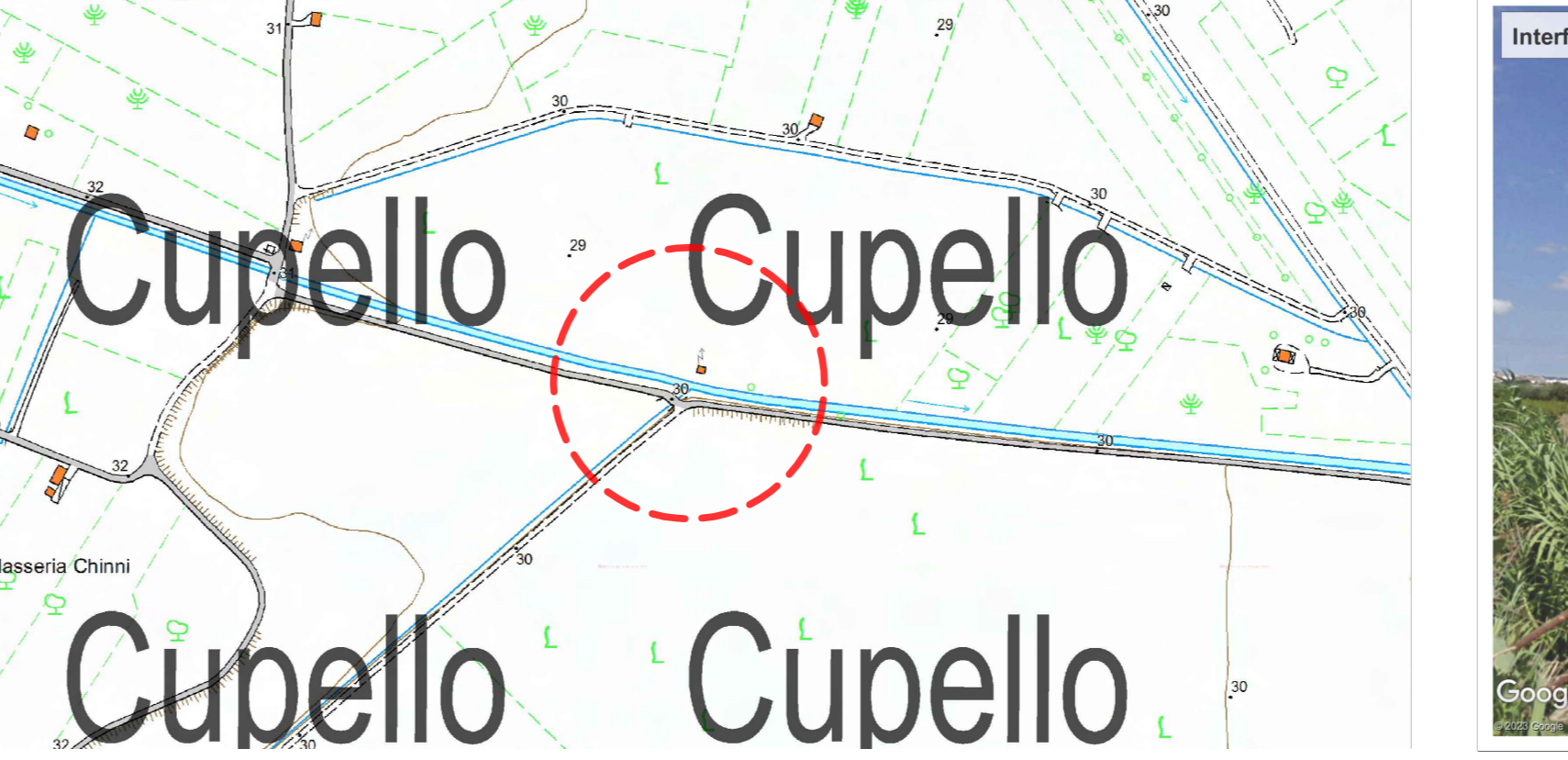


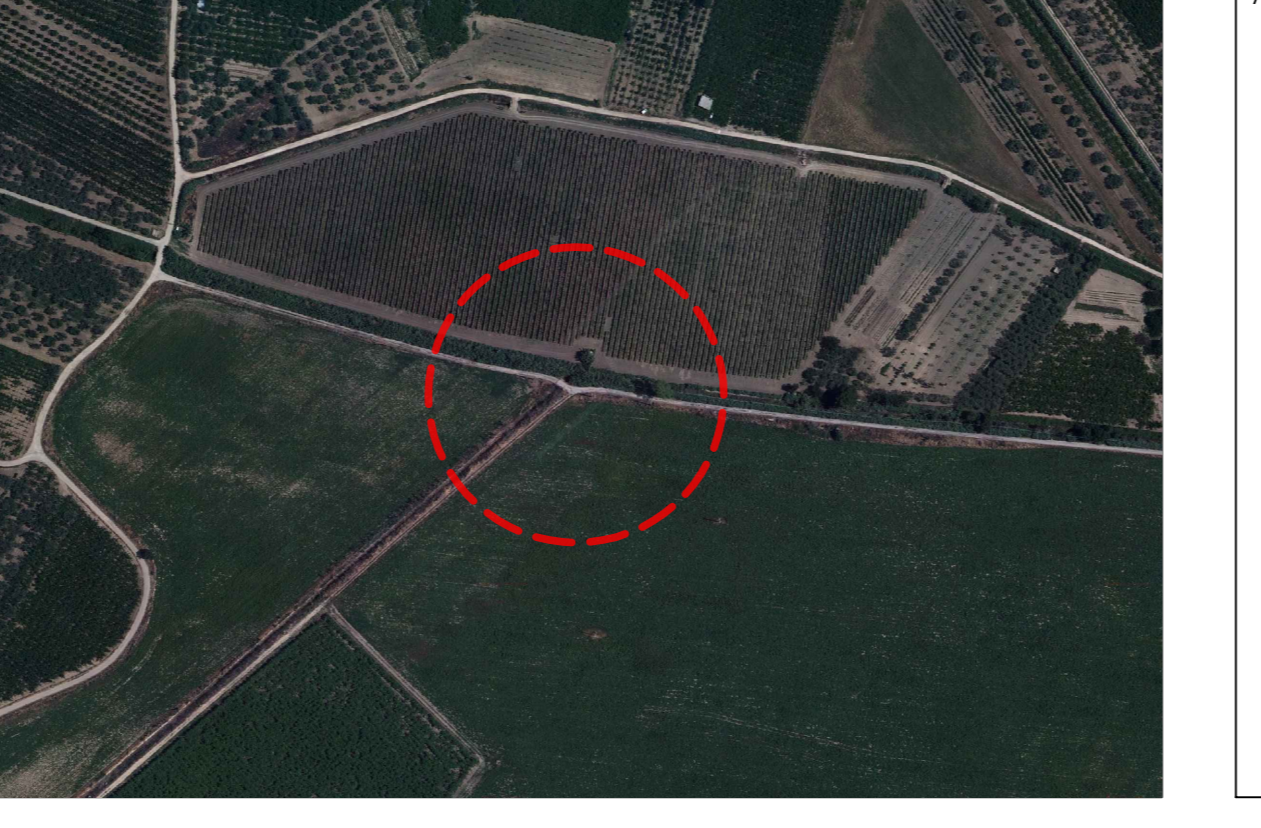
Foto - Interferenza 48



Inquadramento su CTR



Ortofoto con vincolo



Pianta e sezione Z' - Interferenza 48

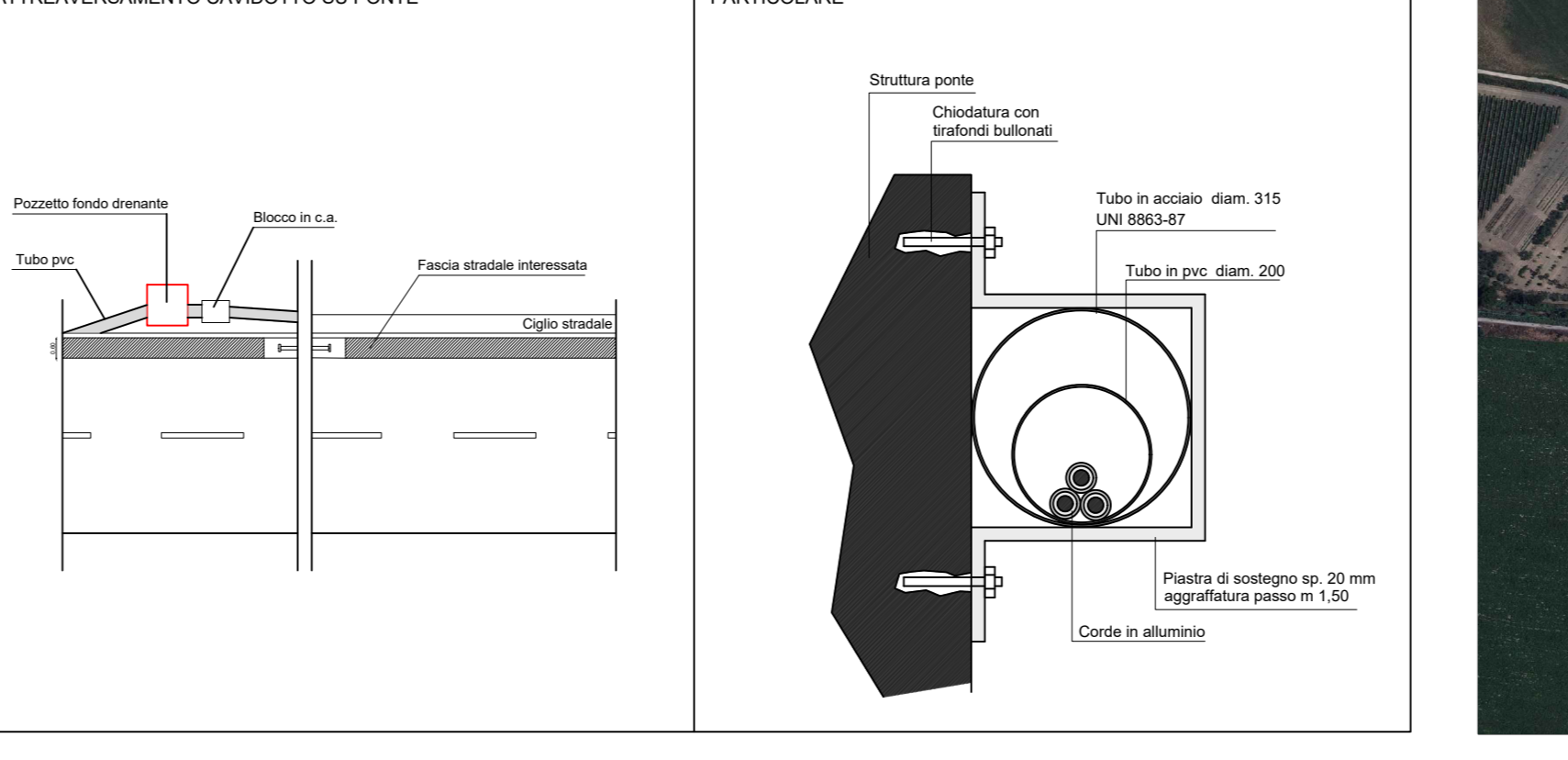
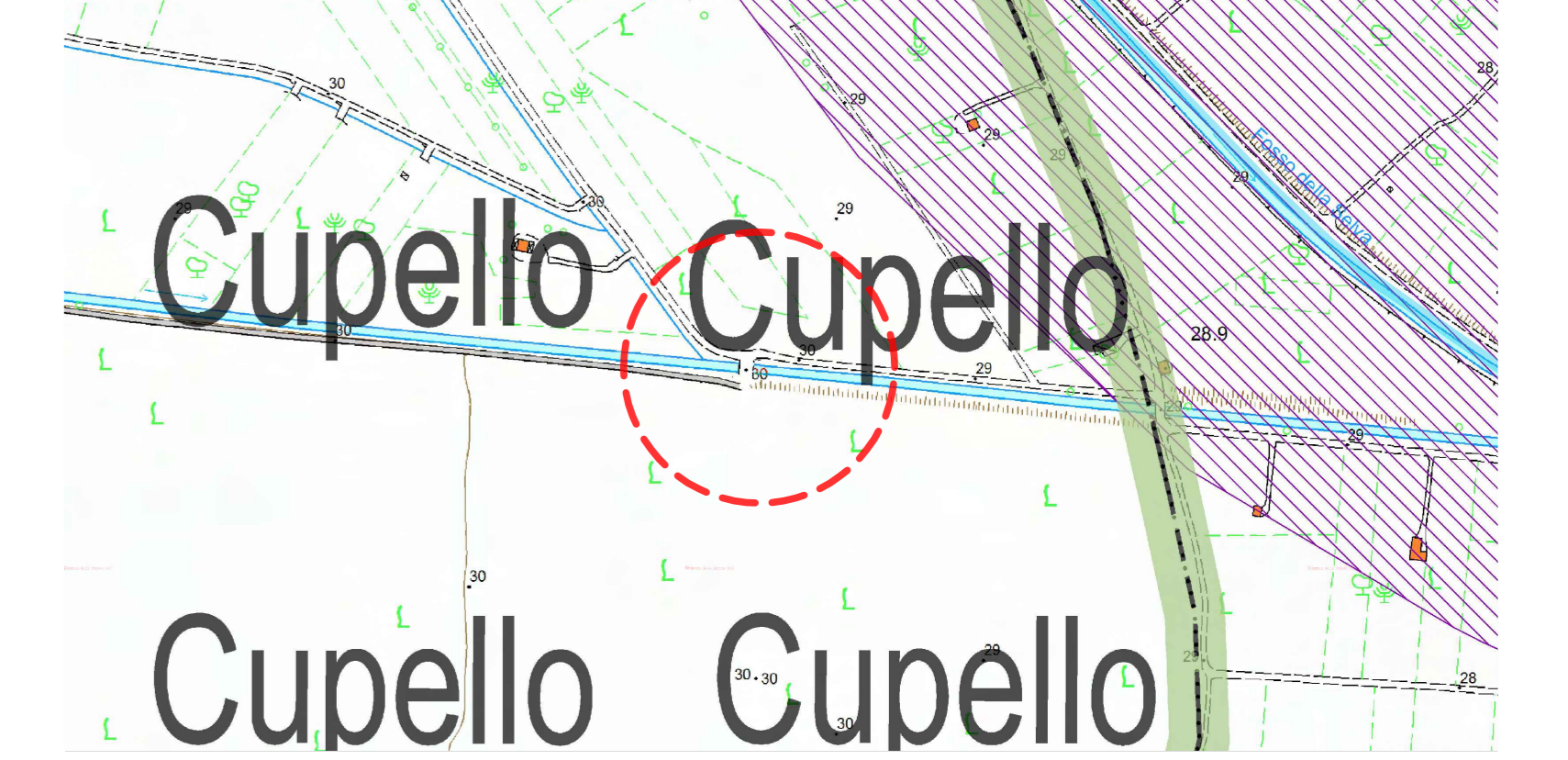


Foto - Interferenza 49



Inquadramento su CTR



Ortofoto con vincolo



Pianta e sezione A'' - Interferenza 49

