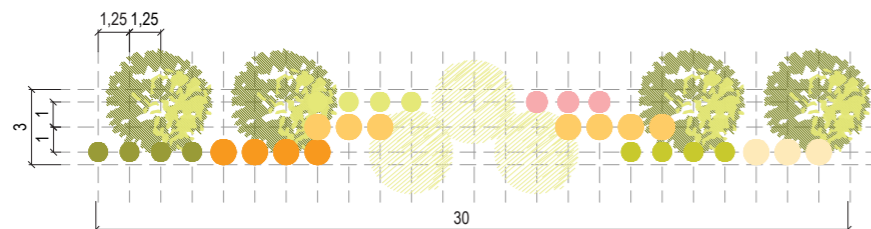


# Fascia arboreo arbustiva di III grandezza

Quercu - carpineto

PAESAGGIO AGRICOLO/PERIURBANO



-  Acer campestre
-  Malus sylvatica
-  Berberis vulgaris
-  Ligustrum vulgare
-  Euonymus europaeus
-  Rosa rugosa
-  Corylus avellana
-  Crataegus monogyna
-  Cornus mas

CONSOCIAZIONI VEGETALI	Alberi III grandezza	%	Arbusti <3m	%	Arbusti >3m	%
Quercu-carpineto	<b>AMBITO NATURALISTICO</b>					
	<i>Acer campestre</i>	60	<i>Berberis vulgaris</i>	15	<i>Corylus avellana</i>	19
	<i>Malus sylvatica</i>	40	<i>Ligustrum vulgare</i>	15	<i>C. monogyna</i>	15
			<i>Rosa rugosa</i>	12	<i>Cornus mas</i>	12
			<i>E. europaeus</i>	12		
	<b>TOTALE</b>	<b>100</b>	<b>TOTALE</b>	<b>54</b>	<b>TOTALE</b>	<b>46</b>
	<b>AMBITO AGRICOLO</b>					
	<i>Acer campestre</i>	60	<i>Berberis vulgaris</i>	15	<i>Corylus avellana</i>	19
	<i>Malus sylvatica</i>	40	<i>Ligustrum vulgare</i>	15	<i>C. monogyna</i>	15
			<i>Rosa rugosa</i>	12	<i>Cornus mas</i>	12
			<i>E. europaeus</i>	12		
	<b>TOTALE</b>	<b>100</b>	<b>TOTALE</b>	<b>54</b>	<b>TOTALE</b>	<b>46</b>
<b>AMBITO URBANO-PERIURBANO</b>						
<i>Acer campestre</i>	60	<i>Berberis vulgaris</i>	15	<i>Corylus avellana</i>	19	
<i>Malus sylvatica</i>	40	<i>Ligustrum vulgare</i>	15	<i>C. monogyna</i>	15	
		<i>Rosa rugosa</i>	12	<i>Cornus mas</i>	12	
		<i>E. europaeus</i>	12			
<b>TOTALE</b>	<b>100</b>	<b>TOTALE</b>	<b>54</b>	<b>TOTALE</b>	<b>46</b>	
SCHEDA TIPOLOGICO	<b>Dimensione:</b>		90mq (3mX30m)			
	<b>Quantità e dimensioni d'impianto:</b>		7 alberi (h.175-250cm) 29 arbusti (h.60-80cm)			
	<b>TOTALE</b>		<b>36 (7 alberi e 29 arbusti)</b>			



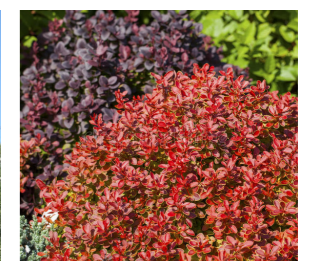
*Corylus avellana*



*Acer campestre*



*Malus sylvatica*



*Berberis vulgaris*



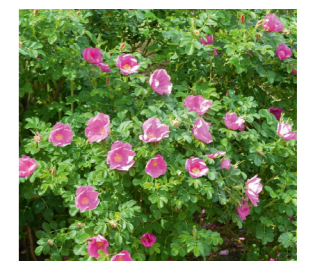
*Crataegus monogyna*



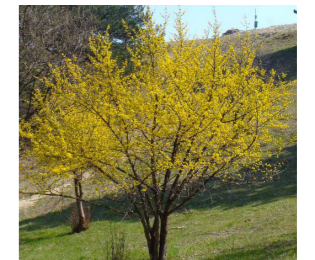
*Ligustrum vulgare*



*Euonymus europaeus*



*Rosa rugosa*

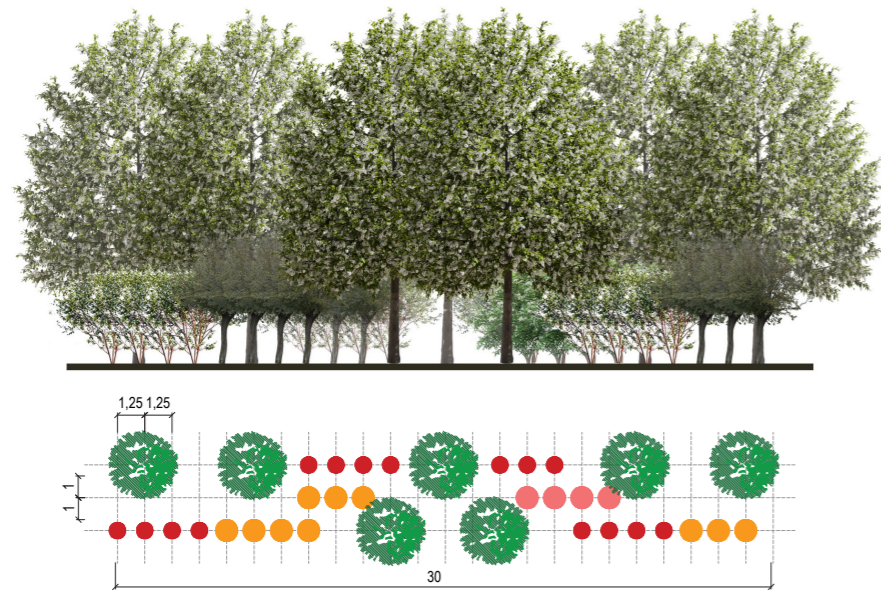






*Cornus mas*

# Fascia arboreo arbustiva di III grandezza

Alneto di Ontano nero

PAESAGGIO AGRICOLO/PERIURBANO/NATURALISTICO



-  Prunus padus
-  Cornus sanguinea
-  Sambucus nigra
-  Crataegus monogyna

	AMBITO NATURALISTICO					
	Prunus padus	100	Cornus sanguinea	40	Sambucus nigra	30
				C. monogyna	30	
<b>TOTALE</b>	<b>100</b>	<b>TOTALE</b>	<b>40</b>	<b>TOTALE</b>	<b>60</b>	
	AMBITO AGRICOLO					
	Prunus padus	100	Cornus sanguinea	40	Sambucus nigra	20
				C. monogyna	40	
<b>TOTALE</b>	<b>100</b>	<b>TOTALE</b>	<b>40</b>	<b>TOTALE</b>	<b>60</b>	
	AMBITO URBANO-PERIURBANO					
	Prunus padus	100	Cornus sanguinea	45	Sambucus nigra	10
				C. monogyna	45	
<b>TOTALE</b>	<b>100</b>	<b>TOTALE</b>	<b>45</b>	<b>TOTALE</b>	<b>55</b>	
SCHEDA TIPOLOGICO	<b>Dimensione:</b>		90mq (3mX30m)			
	<b>Quantità e dimensioni d'impianto:</b>		7 alberi (h.175-250cm)			
	<b>TOTALE</b>		<b>36 (7 alberi e 29 arbusti)</b>			



Cornus sanguinea



Prunus padus



Crataegus monogyna



Sambucus nigra