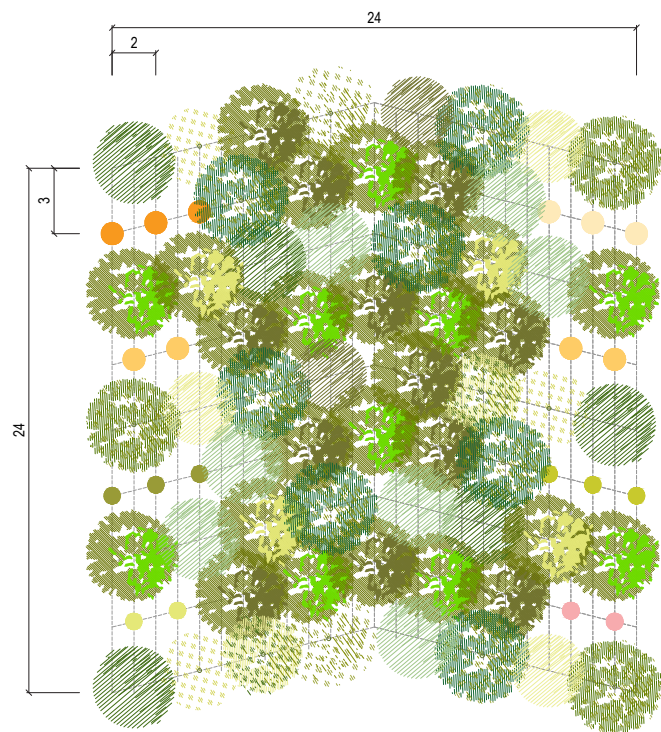


# Bosco

## Quercus - carpineto



- Quercus robur
- Fraxinus excelsior
- Tilia cordata
- Platanus x hybrida
- Quercus petraea
- Ulmus minor
- Carpinus betulus
- Acer pseudoplatanus
- Prunus avium
- Betula pendula
- Acer campestre
- Malus sylvestica
- Berberis vulgaris
- Ligustrum vulgare
- Euonymus europaeus
- Rosa rugosa
- Corylus avellana
- Crataegus monogyna
- Cornus mas



| CONSOCIAZIONI VEGETALI                   | AMBITO NATURALISTICO, AGRICOLO E URBANO-PERIURBANO |                                    |                               |           |                      |          |
|------------------------------------------|----------------------------------------------------|------------------------------------|-------------------------------|-----------|----------------------|----------|
|                                          | Alberi I grandezza                                 |                                    | Alberi II grandezza           |           | Alberi III grandezza |          |
| Quercus-carpineto                        | Quercus robur                                      | 10                                 | Carpinus betulus              | 12        | Acer campestre       | 4        |
|                                          | Fraxinus excelsior                                 | 6                                  | A. pseudoplatanus             | 7         | Malus sylvestica     | 3        |
|                                          | Tilia cordata                                      | 3                                  | Prunus avium                  | 7         |                      |          |
|                                          | Platanus x hybrida                                 | 2                                  | Betula pendula                | 3         |                      |          |
|                                          | Quercus petraea                                    | 2                                  |                               |           |                      |          |
|                                          | Ulmus minor                                        | 2                                  |                               |           |                      |          |
|                                          | <b>TOTALE</b>                                      | <b>24</b>                          | <b>TOTALE</b>                 | <b>29</b> | <b>TOTALE</b>        | <b>7</b> |
|                                          | <b>Arbusti &lt; 3m</b>                             | <b>%</b>                           | <b>Arbusti &gt;3m</b>         | <b>%</b>  |                      |          |
|                                          | Berberis vulgaris                                  | 3                                  | Corylus avellana              | 4         |                      |          |
|                                          | Ligustrum vulgare                                  | 3                                  | C. monogyna                   | 3         |                      |          |
| Euonymus europaeus                       | 2                                                  | Cornus mas                         | 3                             |           |                      |          |
| Rosa rugosa                              | 2                                                  |                                    |                               |           |                      |          |
| <b>TOTALE</b>                            | <b>10</b>                                          | <b>TOTALE</b>                      | <b>20</b>                     |           |                      |          |
| <b>SCHEDA TIPOLOGICO</b>                 | <b>Dimensione:</b>                                 |                                    | <b>576mq (24mX24m)</b>        |           |                      |          |
|                                          |                                                    |                                    | <b>30 alberi (150-175cm)</b>  |           |                      |          |
|                                          |                                                    |                                    | <b>30 alberi (h.60-80cm)</b>  |           |                      |          |
|                                          |                                                    |                                    | <b>20 arbusti (h.60-80cm)</b> |           |                      |          |
| <b>Quantità e dimensioni d'impianto:</b> |                                                    | <b>80 (60 alberi e 20 arbusti)</b> |                               |           |                      |          |
| <b>TOTALE</b>                            |                                                    | <b>80 (60 alberi e 20 arbusti)</b> |                               |           |                      |          |



Quercus robur



Fraxinus excelsior



Tilia cordata



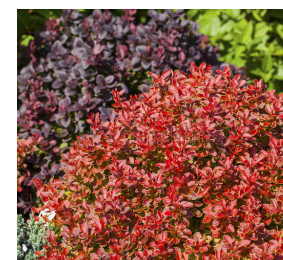
Ulmus minor



Platanus x hybrida



Quercus petraea



Berberis vulgaris



Ligustrum vulgare



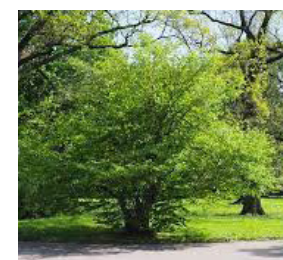
Euonymus europaeus



Ulmus minor



Carpinus betulus



Corylus avellana



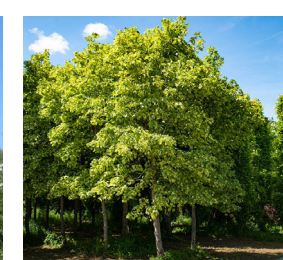
Crataegus monogyna



Cornus mas



Prunus avium



Acer pseudoplatanus



Rosa canina



Betula pendula



Acer campestre



Malus sylvestica

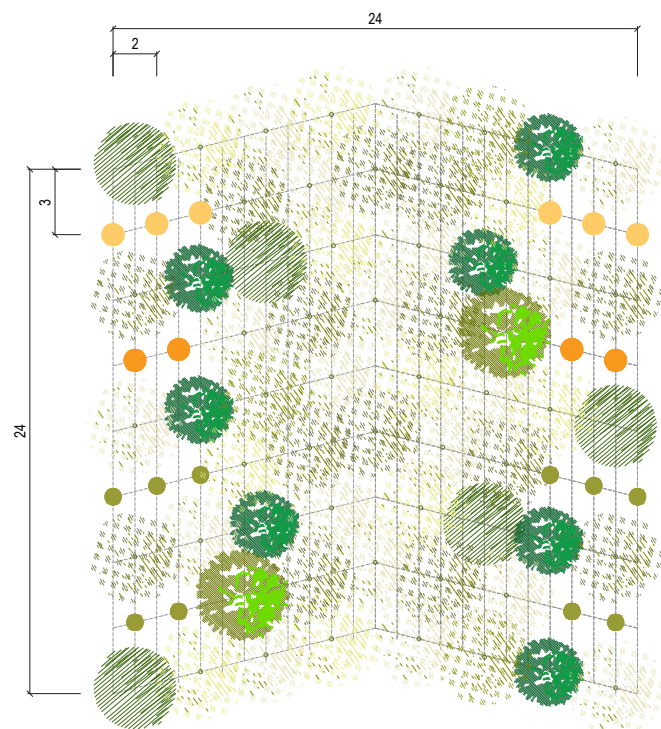


# Bosco

## Alneto di Ontano nero



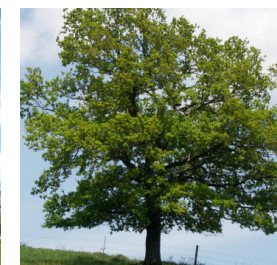
-  Quercus robur
-  Fraxinus excelsior
-  Populus alba
-  Populus nigra
-  Alnus glutinosa
-  Salix alba
-  Prunus pad
-  Cornus sanguinea
-  Sambucus nigra
-  Crataegus monogyna



| Alneto di ontano nero                     | Alberi I grandezza                                              | %         | Alberi II grandezza   | %                      | Alberi III grandezza | %                   |
|-------------------------------------------|-----------------------------------------------------------------|-----------|-----------------------|------------------------|----------------------|---------------------|
|                                           | <i>Fraxinus excelsior</i>                                       | 5         |                       | <i>Alnus glutinosa</i> | 19                   | <i>Prunus padus</i> |
|                                           | <i>Populus alba</i>                                             | 14        | <i>Salix alba</i>     | 10                     |                      |                     |
|                                           | <i>Populus nigra</i>                                            | 3         |                       |                        |                      |                     |
|                                           | <i>Quercus robur</i>                                            | 2         |                       |                        |                      |                     |
|                                           | <b>TOTALE</b>                                                   | <b>24</b> | <b>TOTALE</b>         | <b>29</b>              | <b>TOTALE</b>        | <b>7</b>            |
|                                           | Arbusti < 3m                                                    | %         | Arbusti >3m           | %                      |                      |                     |
|                                           | <i>Cornus sanguinea</i>                                         | 10        | <i>Sambucus nigra</i> | 6                      |                      |                     |
|                                           |                                                                 |           | <i>C. monogyna</i>    | 4                      |                      |                     |
|                                           | <b>TOTALE</b>                                                   | <b>10</b> | <b>TOTALE</b>         | <b>20</b>              |                      |                     |
| SCHEDA TIPOLOGICO                         | <b>Dimensione:</b> 576mq (24mX24m)                              |           |                       |                        |                      |                     |
|                                           | 30 alberi (150-175cm)                                           |           |                       |                        |                      |                     |
|                                           | 30 alberi (h.60-80cm)                                           |           |                       |                        |                      |                     |
|                                           | <b>Quantità e dimensioni d'impianto:</b> 20 arbusti (h.60-80cm) |           |                       |                        |                      |                     |
| <b>TOTALE</b> 80 (60 alberi e 20 arbusti) |                                                                 |           |                       |                        |                      |                     |



*Fraxinus excelsior*



*Quercus robur*



*Prunus padus*



*Populus alba*



*Populus nigra*



*Salix alba*



*Alnus glutinosa*



*Cornus sanguinea*



*Sambucus nigra*



*Crataegus monogyna*