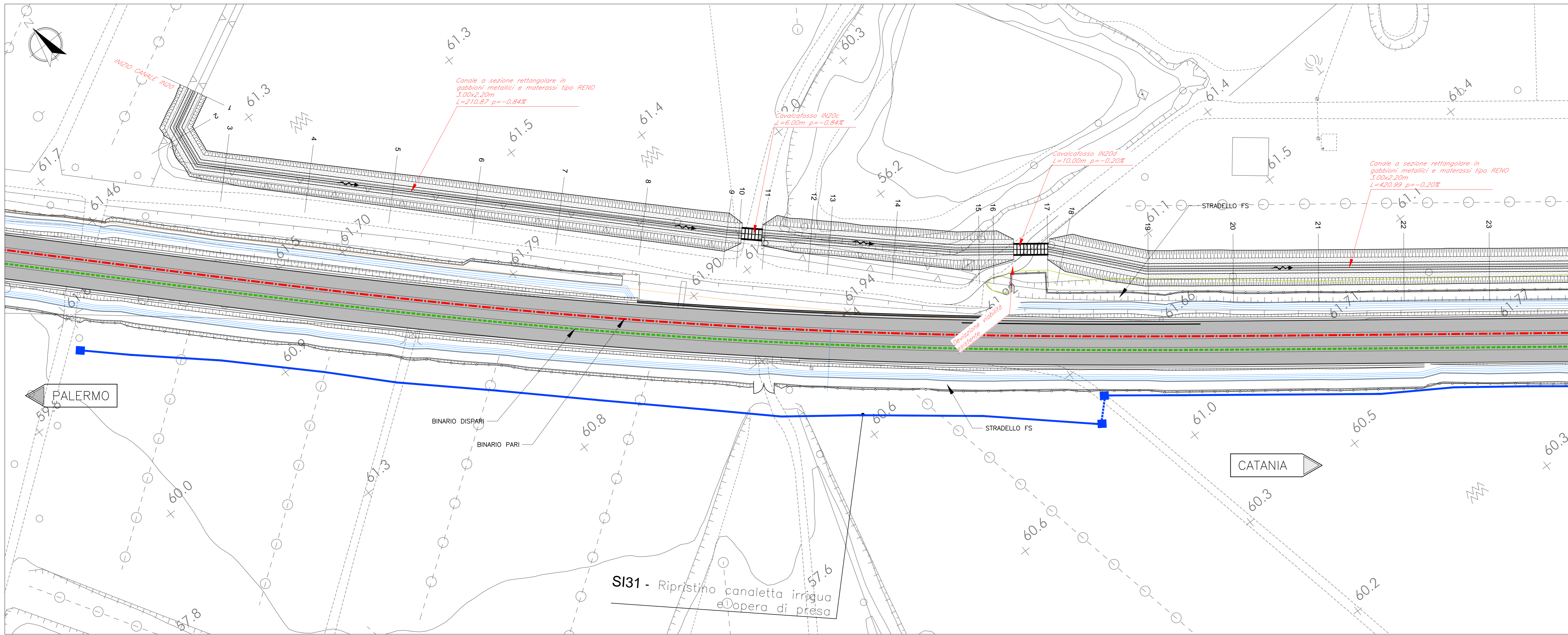


PLANIMETRIA

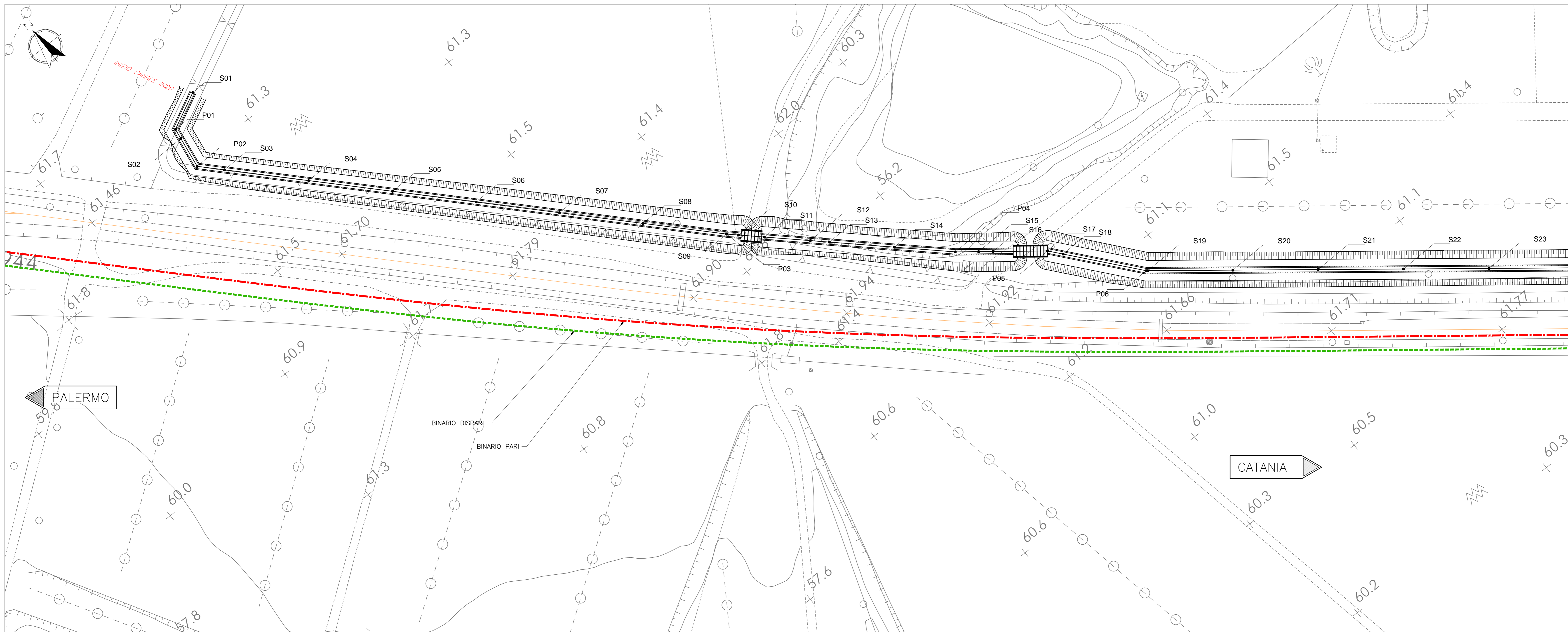
Scala 1:500



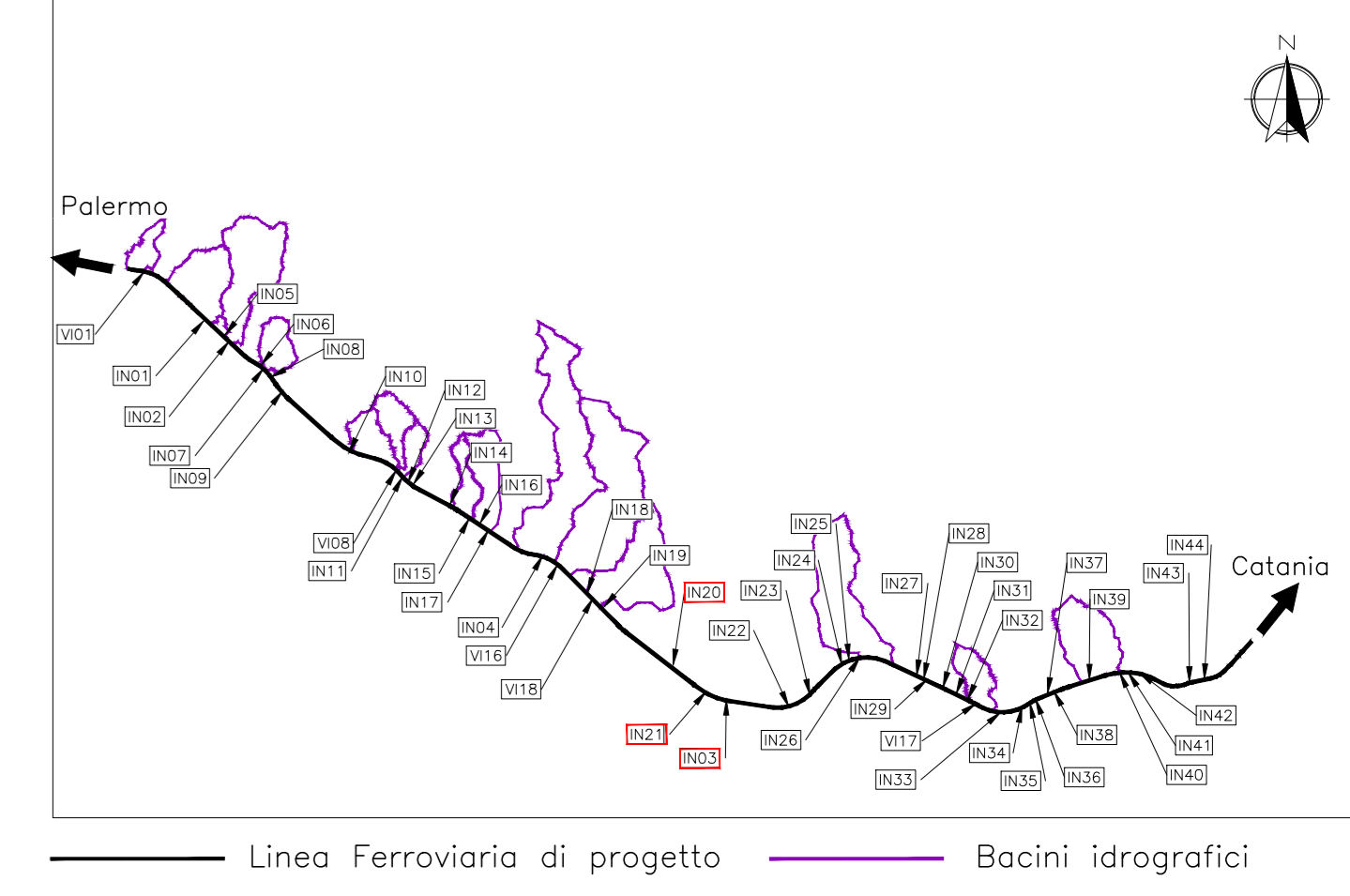
COORDINATE CANALE		COORDINATE CANALE		COORDINATE CANALE	
PUNTO	Posizione X Posizione Y	PUNTO	Posizione X Posizione Y	PUNTO	Posizione X Posizione Y
S01	6887.40 13455.20	S90	67419.25 12180.15	S179	68021.57 11254.33
S02	68846.29 13464.84	S91	67419.25 12172.51	S180	68021.57 11254.34
S03	68850.63 13431.69	S92	67448.25 12155.06	S181	68021.57 11254.34
S04	68866.02 13431.95	S93	67452.98 12149.39	S182	68021.57 11254.34
S05	68865.34 13396.28	S94	67464.26 12137.47	S183	68021.57 11254.34
S06	68902.60 13378.66	S95	67486.34 12122.59	S184	68021.57 11254.34
S07	68918.83 13361.09	S96	67521.94 12110.56	S185	68021.57 11254.34
S08	68937.06 13343.50	S97	67566.13 12107.32	S186	68021.57 11254.34
S09	68954.32 13325.90	S98	67625.52 12092.04	S187	68021.57 11254.34
S10	68959.90 13324.49	S99	67645.21 12076.76	S188	68021.57 11254.34
S11	68962.49 13318.34	S100	67665.50 12061.48	S189	68021.57 11254.34
S12	68972.40 13309.17	S101	67685.53 12046.26	S190	68021.57 11254.34
S13	68978.49 13305.40	S102	67695.25 12031.01	S191	68021.57 11254.34
S14	68990.51 13292.44	S103	67725.72 12016.76	S192	68021.57 11254.34
S15	68999.03 13276.14	S104	67645.51 12001.48	S193	68021.57 11254.34
S16	69012.40 13272.54	S105	67704.88 11986.25	S194	68021.57 11254.34
S17	69024.90 13263.87	S106	67665.50 11976.20	S195	68021.57 11254.34
S18	69028.00 13250.28	S107	67685.09 11970.92	S196	68021.57 11254.34
S19	69044.45 13241.07	S108	67724.56 11940.23	S197	68021.57 11254.34
S20	69064.09 13225.78	S109	67724.56 11940.23	S198	68021.57 11254.34
S21	69078.78 13210.45	S110	67744.21 11924.77	S199	68021.57 11254.34
S22	69103.51 13195.10	S111	67764.00 11909.50	S200	68021.57 11254.34
S23	69123.23 13179.74	S112	67779.55 11897.49	S201	68021.57 11254.34
S24	69142.96 13164.38	S113	67783.79 11894.22	S202	68021.57 11254.34
S25	69162.69 13149.02	S114	67823.57 11878.84	S203	68021.57 11254.34
S26	69182.41 13133.67	S115	67823.57 11878.84	S204	68021.57 11254.34
S27	69202.39 13118.69	S116	67843.55 11848.38	S205	68021.57 11254.34
S28	69212.11 13103.27	S117	67862.98 11833.11	S206	68021.57 11254.34
S29	69241.84 13087.91	S118	67882.73 11817.83	S207	68021.57 11254.34
S30	69262.36 13072.29	S119	67888.40 11814.45	S208	68021.57 11254.34
S31	69282.05 13056.63	S120	67911.88 11799.17	S209	68021.57 11254.34
S32	69302.55 13041.14	S121	67922.31 11797.27	S210	68021.57 11254.34
S33	69320.81 13025.56	S122	67942.10 11772.00	S211	68021.57 11254.34
S34	69340.72 13010.00	S123	67961.68 11756.72	S212	68021.57 11254.34
S35	69360.57 12994.24	S124	67971.41 11749.36	S213	68021.57 11254.34
S36	69382.28 12978.52	S125	67980.78 11740.28	S214	68021.57 11254.34
S37	69402.39 12962.80	S126	67984.00 11724.75	S215	68021.57 11254.34
S38	69420.24 12950.80	S127	68020.23 11709.58	S216	68021.57 11254.34
S39	69440.09 12935.60	S128	68040.21 11694.63	S217	68021.57 11254.34
S40	69459.94 12920.41	S129	68048.11 11679.25	S218	68021.57 11254.34
S41	69479.79 12905.21	S130	68060.17 11679.76	S219	68021.57 11254.34
S42	69499.34 12889.63	S131	68080.10 11664.92	S220	68021.57 11254.34
S43	69519.13 12874.34	S132	68100.00 11649.63	S221	68021.57 11254.34
S44	69538.24 12858.94	S133	68120.04 11635.37	S222	68021.57 11254.34
S45	69558.83 12843.95	S134	68140.10 11620.70	S223	68021.57 11254.34
S46	69579.17 12828.43	S135	68161.55 11607.45	S224	68021.57 11254.34
S47	69599.06 12812.80	S136	68182.22 11594.27	S225	68021.57 11254.34
S48	69619.53 12797.55	S137	68201.50 11579.15	S226	68021.57 11254.34
S49	69639.77 12782.05	S138	68218.50 11567.80	S227	68021.57 11254.34
S50	69659.12 12766.38	S139	68230.00 11561.97	S228	68021.57 11254.34
S51	69678.86 12750.38	S140	68240.35 11547.02	S229	68021.57 11254.34
S52	69698.01 12734.05	S141	68251.34 11538.67	S230	68021.57 11254.34
S53	69717.36 12717.72	S142	68261.32 11533.63	S231	68021.57 11254.34
S54	69736.10 12701.39	S143	68282.30 11520.24	S232	68021.57 11254.34
S55	69755.85 12685.05	S144	68293.07 11506.81	S233	68021.57 11254.34
S56	69775.50 12668.68	S145	68328.26 11500.09	S234	68021.57 11254.34
S57	69794.34 12652.34	S146	68349.69 11487.55	S235	68021.57 11254.34
S58	69813.28 12636.01	S147	68370.25 11475.51	S236	68021.57 11254.34
S59	69832.22 12619.68	S148	68377.69 11469.62	S237	68021.57 11254.34
S60	69851.16 12603.34	S149	68416.10 11449.47	S238	68021.57 11254.34
S61	69870.10 12587.01	S150	68424.48 11443.62	S239	68021.57 11254.34
S62	69889.04 12570.67	S151	68436.00 11438.67	S240	68021.57 11254.34
S63	69907.98 12554.34	S152	68457.08 11425.47	S241	68021.57 11254.34
S64	69926.92 12538.01	S153	68478.07 11412.53	S242	68021.57 11254.34
S65	69945.86 12521.68	S154	68501.58 11404.77	S243	68021.57 11254.34
S66	69964.80 12505.34	S155	68524.28 11394.27	S244	68021.57 11254.34
S67	69983.74 12489.01	S156	68546.48 11383.96	S245	68021.57 11254.34
S68	69992.68 12472.68	S157	68569.09 11373.55	S246	68021.57 11254.34
S69	70011.62 12456.34	S158	68591.96 11364.21	S247	68021.57 11254.34
S70	70030.56 12440.01	S159	68614.40 11354.96	S248	68021.57 11254.34
S71	70049.50 12423.68	S160	68637.84 11345.90	S249	68021.57 11254.34
S72	70068.44 12407.34	S161	68660.80 11336.74	S250	68021.57 11254.34
S73	70087.38 12391.01	S162	68684.00 11328.21	S251	68021.57 11254.34
S74	70106.32 12374.68	S163	68707.48 11320.51	S252	68021.57 11254.34
S75	70125.26 12358.34	S164	68731.00 11312.91	S253	68021.57 11254.34
S76	70144.20 12342.01	S165	68754.83 11306.55	S254	68021.57 11254.34
S77	70163.14 12325.68	S166	68778.75 11299.80	S255	68021.57 11254.34
S78	70182.08 12309.34	S167	68802.47 11293.25	S256	68021.57 11254.34
S79	70200.92 12293.01	S168	68826.50 11286.69	S257	68021.57 11254.34
S80	70219.86 12276.68	S169	68850.14 11280.20	S258	68021.57 11254.34
S81	70238.80 12260.34	S170	68874.21 11274.40	S259	68021.57 11254.34
S82	70257.74 12244.01	S171	68898.00 11268.50	S260	68021.57 11254.34
S83	70276.68 12227.68	S172	68922.17 11267.54	S261	68021.57 11254.34
S84	70295.62 12211.34	S173	68947.00 11267.30	S262	68021.57 11254.34
S85	70314.56 12195.01	S174	68972.00 11267.34	S263	68021.57 11254.34
S86	70333.50 12178.68	S175	68997.17 11267.36	S264	68021.57 11254.34
S87	70352.44 12162.34	S176	69022.50 11267.30	S265	68021.57 11254.34
S88	70371.38 12146.01	S177	69047.50 11267.28	S266	68021.57 11254.34
S89	70390.32 12129.68	S178	69072.50 11267.31	S267	68021.57 11254.34

TRACCIAMENTO

Scala 1:500



QUADRO D'UNIONE - Scala 1:200000



Linea Ferroviaria di progetto Bacini idrografici

COMMITTENTE: **RFI** RETE FERROVIARIA ITALIANA GRUPPO FERROVIE DELLO STATO

DIREZIONE LAVORI: **ITALFER** GRUPPO FERROVIE DELLO STATO

APPALTATORE: **salini impregio** **ASTALDI**

PROGETTAZIONE: **TECH PROJECT** **Lombardi**

PROGETTO ESECUTIVO DI VARIANTE **DIRETTRICE FERROVIARIA MESSINA - CATANIA - PALERMO NUOVO COLLEGAMENTO PALERMO - CATANIA RADDOPPIO DELLA TRATTA BICOCCA - CATENANUOVA**

DISEGNO ID - IDROLOGIA E IDRAULICA ATTRAVERSAMENTI MINORI Planimetria, tracciamento e pianta scavi Canale IN20-IN21-IN03 Tav. 1/11

APPALTATORE		PROGETTAZIONE	
DIRETTORE TECNICO	DIRETTORE DELLA PROGETTAZIONE	Ing. G. TANZI	
Ing. G. PARISI	Ing. G. TANZI		
COMMESSA	LOTTO	FASE	ENTE TIPO DOC.
RS39	10	V	Z
OPERAZIONE	DISCIPLINA	PROGR.	REV.
101200	001	A	
SCALA:	1:500		
Rev.	Descrizione	Redatto	Data
A	Emissione a seguito di Oss. n.1007	F. Tori	06/02/2022
Verificato	Data	Approvato	Data
G. Tanzi	06/02/2022	G. Tanzi	06/02/2022