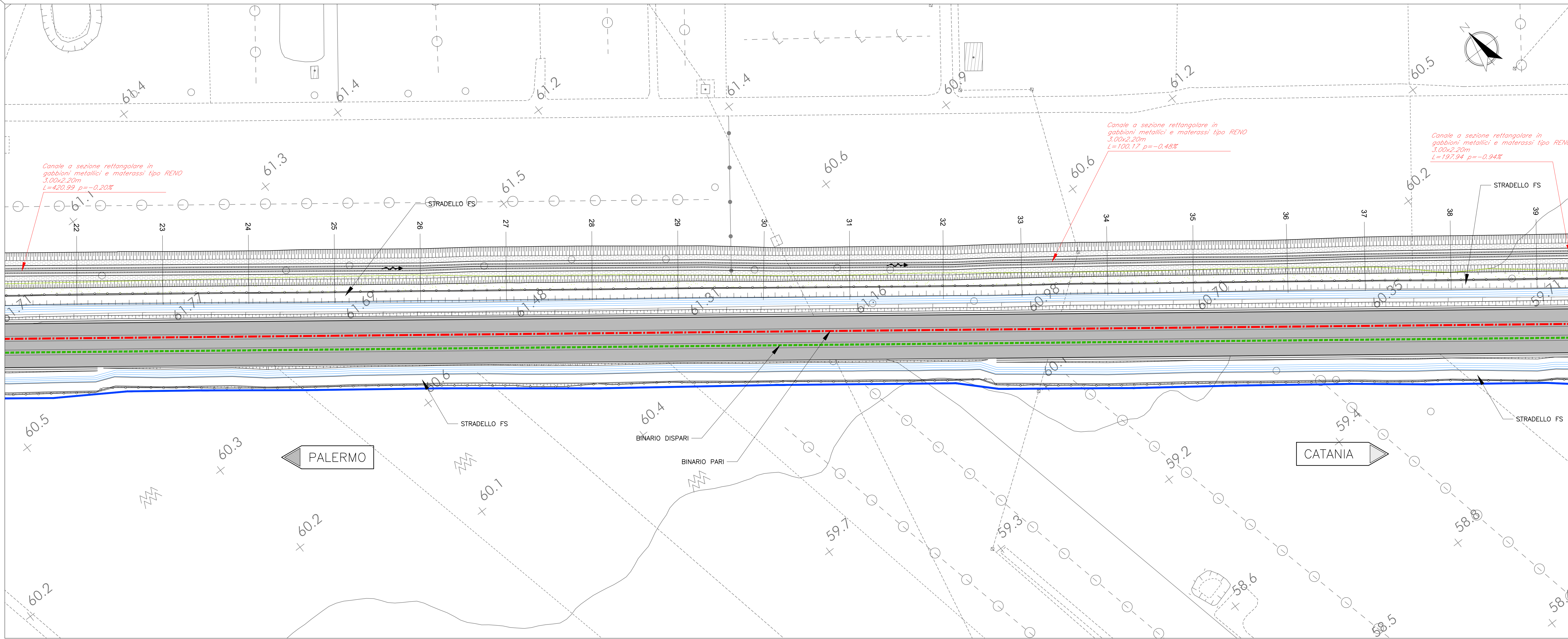


PLANIMETRIA

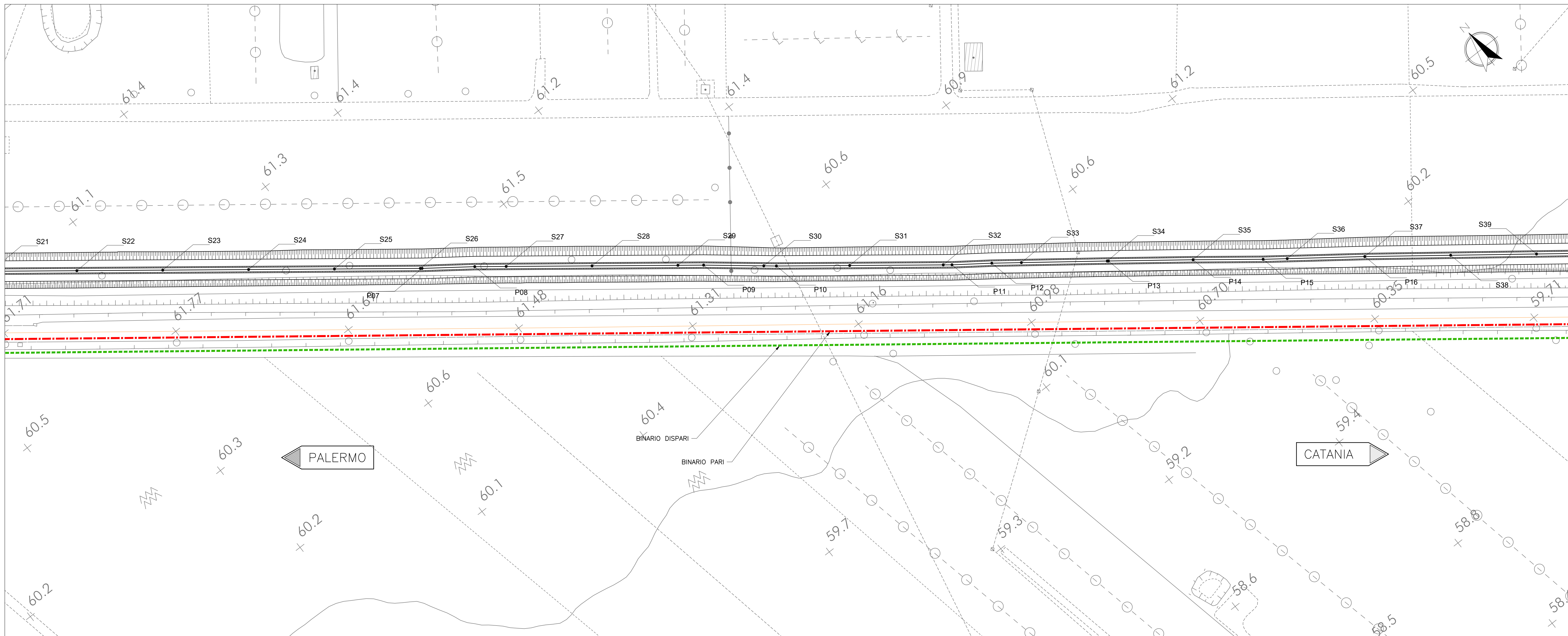
Scala 1:500



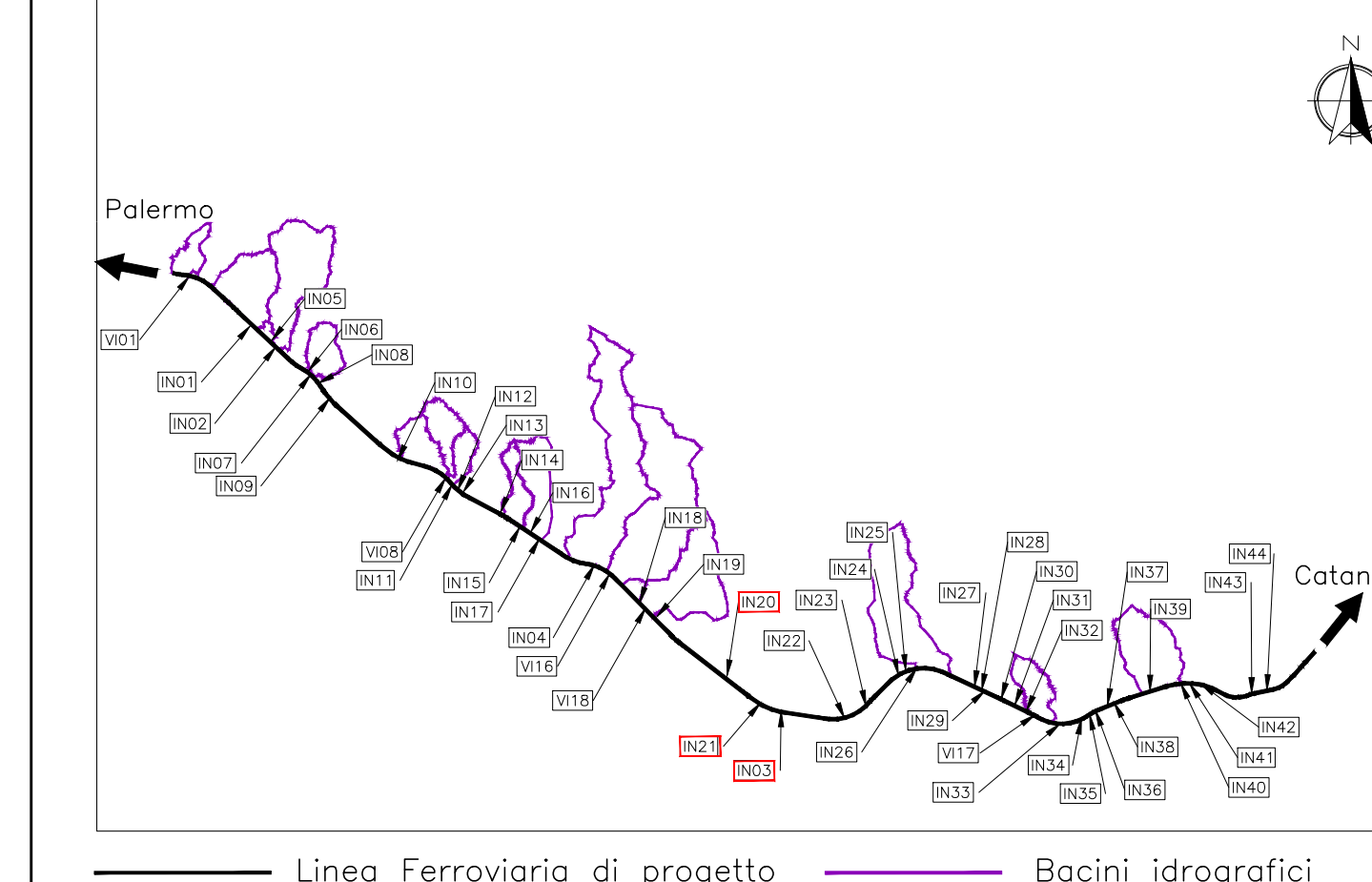
COORDINATE CANALE			COORDINATE CANALE			COORDINATE CANALE		
PUNTO	Posizione X	Posizione Y	PUNTO	Posizione X	Posizione Y	PUNTO	Posizione X	Posizione Y
S01	6887.40	13455.20	S90	67419.25	12180.15	S179	68621.57	11254.34
S02	6884.29	13464.84	S91	67429.80	12172.53	S180	68626.51	11255.34
S03	68850.63	13431.69	S92	67448.25	12155.06	S181	68670.89	11246.34
S04	68866.02	13431.95	S93	67452.98	12149.39	S182	68695.57	11242.34
S05	68880.34	13396.28	S94	67466.56	12137.41	S94	68720.25	11238.34
S06	68902.60	13378.66	S95	67486.34	12122.59	S184	68744.92	11234.34
S07	68919.63	13361.09	S96	67521.94	12110.56	S185	68769.62	11231.34
S08	68937.06	13343.50	S97	67566.13	12107.32	S186	68794.33	11228.64
S09	68954.32	13325.90	S98	67625.92	12092.04	S187	68819.04	11225.70
S10	68970.90	13324.49	S99	67694.71	12076.76	S188	68843.75	11222.76
S11	68987.49	13318.34	S100	67766.50	12061.48	S189	68868.46	11219.43
S12	68972.40	13309.17	S101	67838.33	12046.26	S190	68893.17	11216.03
S13	68979.49	13305.40	S102	67909.15	12031.00	S191	68917.88	11212.54
S14	68990.94	13292.44	S103	67979.97	12015.76	S192	68942.59	11209.04
S15	68999.03	13276.14	S104	68049.71	12001.48	S193	68967.30	11205.54
S16	69012.40	13272.54	S105	68119.45	11987.26	S194	68992.01	11202.04
S17	69024.90	13263.87	S106	68189.19	11973.04	S195	69016.72	11198.54
S18	69028.00	13260.28	S107	68258.93	11958.82	S196	69041.43	11195.04
S19	69044.45	13241.07	S108	68328.67	11944.60	S197	69066.14	11191.54
S20	69064.09	13225.78	S109	68398.41	11930.38	S198	69090.85	11188.04
S21	69083.78	13210.45	S110	68468.15	11916.16	S199	69115.56	11184.54
S22	69103.47	13195.10	S111	68537.89	11901.94	S200	69140.27	11181.04
S23	69123.17	13179.74	S112	68607.63	11887.72	S201	69164.98	11177.54
S24	69142.86	13164.38	S113	68677.37	11873.50	S202	69189.69	11174.04
S25	69162.55	13149.02	S114	68747.11	11859.28	S203	69214.40	11170.54
S26	69182.24	13133.67	S115	68816.85	11845.06	S204	69239.11	11167.04
S27	69201.93	13118.31	S116	68886.59	11830.84	S205	69263.82	11163.54
S28	69221.62	13102.97	S117	68956.33	11816.62	S206	69288.53	11160.04
S29	69241.31	13087.61	S118	69026.07	11802.40	S207	69313.24	11156.54
S30	69261.00	13072.25	S119	69095.81	11788.18	S208	69337.95	11153.04
S31	69280.69	13056.89	S120	69165.55	11773.96	S209	69362.66	11149.54
S32	69300.38	13041.53	S121	69235.29	11759.74	S210	69387.37	11146.04
S33	69320.07	13026.17	S122	69305.03	11745.52	S211	69412.08	11142.54
S34	69339.76	13010.81	S123	69374.77	11731.30	S212	69436.79	11139.04
S35	69359.45	12995.45	S124	69444.51	11717.08	S213	69461.50	11135.54
S36	69379.14	12980.09	S125	69514.25	11702.86	S214	69486.21	11132.04
S37	69398.83	12964.73	S126	69583.99	11688.64	S215	69510.92	11128.54
S38	69418.52	12949.37	S127	69653.73	11674.42	S216	69535.63	11125.04
S39	69438.21	12934.01	S128	69723.47	11660.20	S217	69560.34	11121.54
S40	69457.90	12918.65	S129	69793.21	11645.98	S218	69585.05	11118.04
S41	69477.59	12903.29	S130	69862.95	11631.76	S219	69609.76	11114.54
S42	69497.28	12887.93	S131	69932.69	11617.54	S220	69634.47	11111.04
S43	69516.97	12872.57	S132	70002.43	11603.32	S221	69659.18	11107.54
S44	69536.66	12857.21	S133	70072.17	11589.10	S222	69683.89	11104.04
S45	69556.35	12841.85	S134	70141.91	11574.88	S223	69708.60	11100.54
S46	69576.04	12826.49	S135	70211.65	11560.66	S224	69733.31	11097.04
S47	69595.73	12811.13	S136	70281.39	11546.44	S225	69758.02	11093.54
S48	69615.42	12795.77	S137	70351.13	11532.22	S226	69782.73	11090.04
S49	69635.11	12780.41	S138	70420.87	11518.00	S227	69807.44	11086.54
S50	69654.80	12765.05	S139	70490.61	11503.78	S228	69832.15	11083.04
S51	69674.49	12749.69	S140	70560.35	11489.56	S229	69856.86	11079.54
S52	69694.18	12734.33	S141	70630.09	11475.34	S230	69881.57	11076.04
S53	69713.87	12718.97	S142	70700.83	11461.12	S231	69906.28	11072.54
S54	69733.56	12703.61	S143	70770.57	11446.90	S232	69930.99	11069.04
S55	69753.25	12688.25	S144	70840.31	11432.68	S233	69955.70	11065.54
S56	69772.94	12672.89	S145	70910.05	11418.46	S234	69980.41	11062.04
S57	69792.63	12657.53	S146	70979.79	11404.24	S235	70005.12	11058.54
S58	69812.32	12642.17	S147	71049.53	11389.98	S236	70029.83	11055.04
S59	69832.01	12626.81	S148	71119.27	11375.76	S237	70054.54	11051.54
S60	69851.70	12611.45	S149	71189.01	11361.54	S238	70079.25	11048.04
S61	69871.39	12596.09	S150	71258.75	11347.32	S239	70103.96	11044.54
S62	69891.08	12580.73	S151	71328.49	11333.10	S240	70128.67	11041.04
S63	69910.77	12565.37	S152	71398.23	11318.88	S241	70153.38	11037.54
S64	69930.46	12549.99	S153	71467.97	11304.66	S242	70178.09	11034.04
S65	69950.15	12534.63	S154	71537.71	11290.44	S243	70202.80	11030.54
S66	69969.84	12519.27	S155	71607.45	11276.22	S244	70227.51	11027.04
S67	69989.53	12503.91	S156	71677.19	11262.00	S245	70252.22	11023.54
S68	70009.22	12488.55	S157	71746.93	11247.78	S246	70276.93	11020.04
S69	70028.91	12473.19	S158	71816.67	11233.56	S247	70301.64	11016.54
S70	70048.60	12457.83	S159	71886.41	11219.34	S248	70326.35	11013.04
S71	70068.29	12442.47	S160	71956.15	11205.12	S249	70351.06	11009.54
S72	70087.98	12427.11	S161	72025.89	11190.90	S250	70375.77	11006.04
S73	70107.67	12411.75	S162	72095.63	11176.68	S251	70400.48	11002.54
S74	70127.36	12396.39	S163	72165.37	11162.46	S252	70425.19	10999.04
S75	70147.05	12381.03	S164	72235.11	11148.24	S253	70449.90	10995.54
S76	70166.74	12365.67	S165	72304.85	11134.02	S254	70474.61	10992.04
S77	70186.43	12350.31	S166	72374.59	11119.80	S255	70499.32	10988.54
S78	70206.12	12334.95	S167	72444.33	11105.58	S256	70524.03	10985.04
S79	70225.81	12319.59	S168	72514.07	11091.36	S257	70548.74	10981.54
S80	70245.50	12304.23	S169	72583.81	11077.14	S258	70573.45	10978.04
S81	70265.19	12288.87	S170	72653.55	11062.92	S259	70598.16	10974.54
S82	70284.88	12273.51	S171	72723.29	11048.70	S260	70622.87	10971.04
S83	70304.57	12258.15	S172	72793.03	11034.48	S261	70647.58	10967.54
S84	70324.26	12242.79	S173	72862.77	11020.26	S262	70672.29	10964.04
S85	70343.95	12227.43	S174	72932.51	11006.04	S263	70696.99	10960.54
S86	70363.64	12212.07	S175	73002.25	10991.82	S264	70721.70	10957.04
S87	70383.33	12196.71	S176	73071.99	10977.60	S265	70746.41	10953.54
S88	70403.02	12181.35	S177	73141.73	10963.38	S266	70771.12	10950.04
S89	70422.71	12165.99	S178	73211.47	10949.16	S267	70795.83	10946.54

TRACCIAMENTO

Scala 1:500



QUADRO D'UNIONE - Scala 1:200000



Linea Ferroviaria di progetto Bacini idrografici

COMMITTEE: **RFI** GRUPPO FERROVIE DELLO STATO

DIREZIONE LAVORI: **ITALFER** GRUPPO FERROVIE DELLO STATO

APPALTORE: **salini impregio** **ASTALDI**

PROGETTAZIONE: **TECH PROJECT** **Lombardi**

PROGETTO ESECUTIVO DI VARIANTE

**DIRETTRICE FERROVIARIA MESSINA - CATANIA - PALERMO NUOVO COLLEGAMENTO PALERMO - CATANIA RADDOPPIO DELLA TRATTA BICOCCA - CATENANUOVA**

DISEGNO

ID - IDROLOGIA E IDRAULICA  
 ATTRAVERSAMENTI MINORI  
 Planimetria, tracciamento e pianta scavi Canale IN20-IN21-IN03 Tav.2/11

APPALTORE	PROGETTAZIONE
DIRETTORE TECNICO Ing. G. PARISI	DIRETTORE DELLA PROGETTAZIONE Ing. G. TANDI

COMMESSA	LOTTO	FASE	ENTE TIPO DOC.	OPERA/DISCIPLINA	PROGR.	REV.	SCALA:
RS39	10	V	Z	P8	101200	002	A

Rev.	Descrizione	Redatto	Data	Verificato	Data	Approvato	Data	Autorizzato	Data
A	Emissione a seguito di Oss. n. 1027	F. Rossi	06/03/20	C. Bellini	06/03/20	G. Tandi	06/03/20	Ing. G. TANDI	

File: RS39-10-V-ZZ-P8-ID1200-02\_A.DWG n. Elab.: