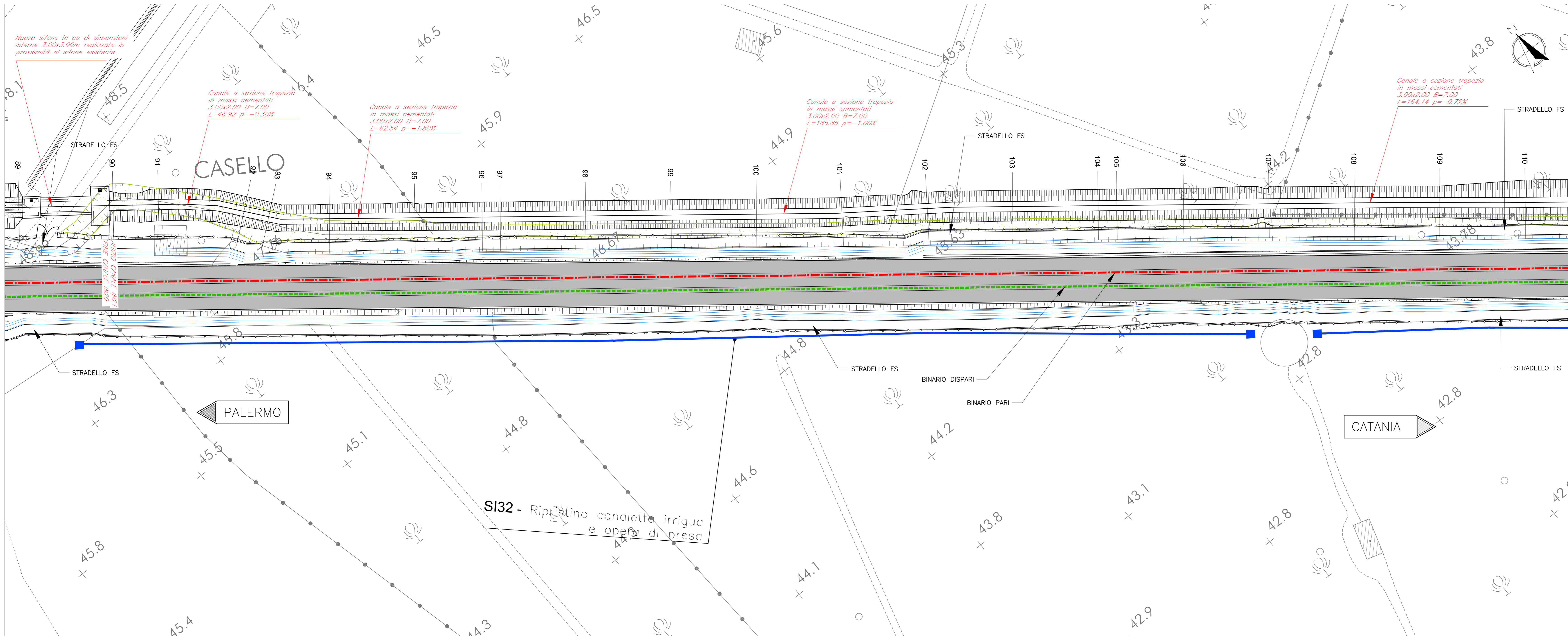


PLANIMETRIA

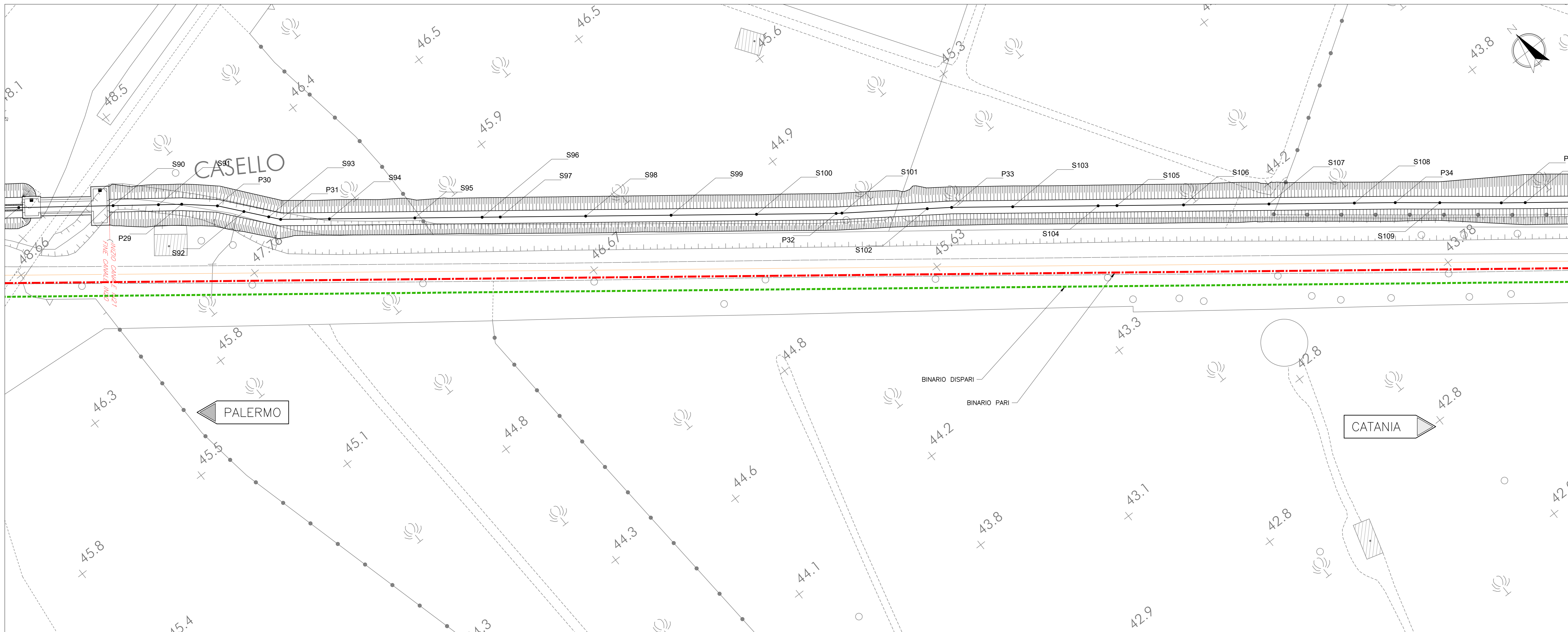
Scala 1:500



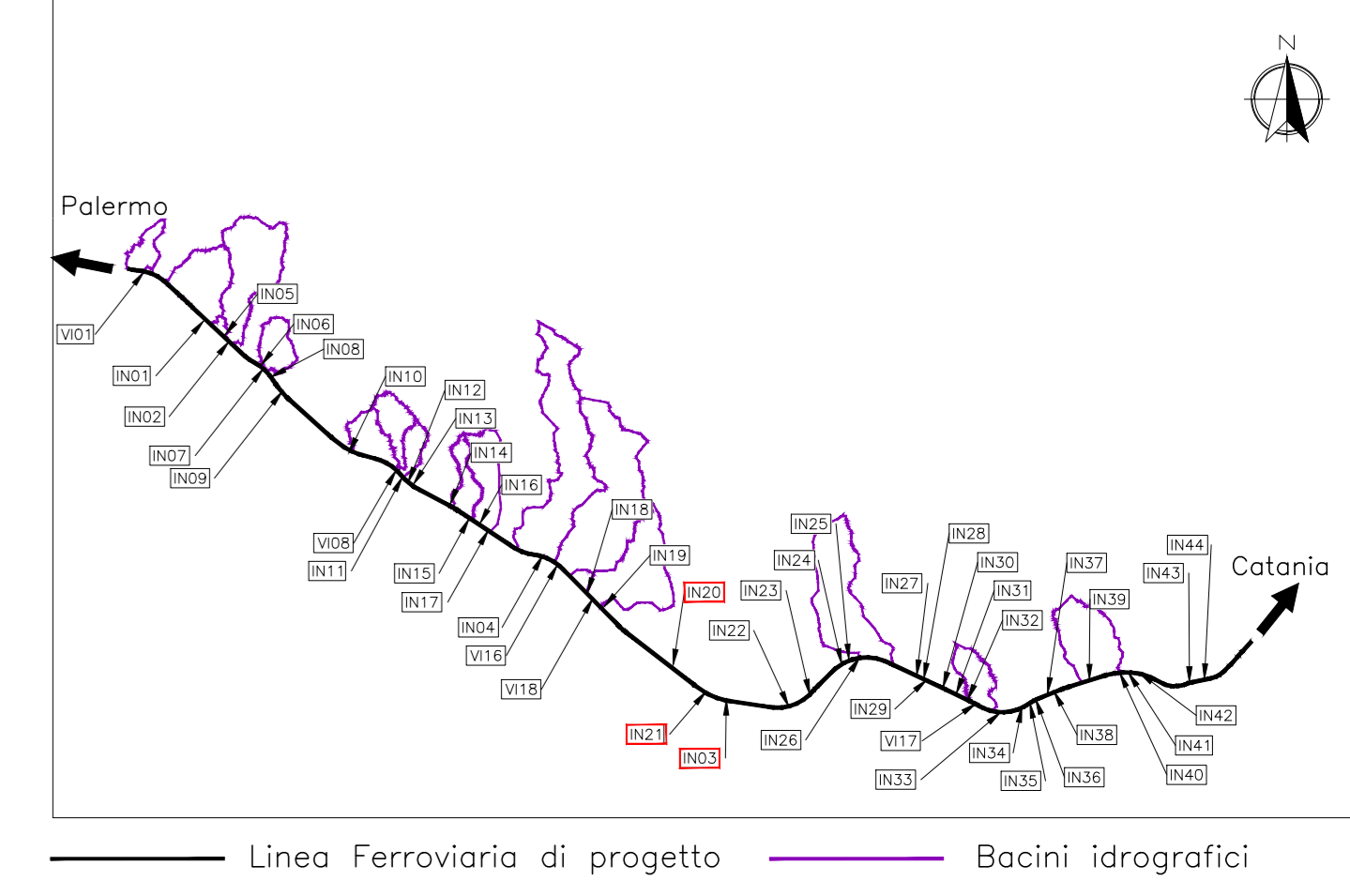
COORDINATE CANALE		COORDINATE CANALE		COORDINATE CANALE	
PUNTO	Posizione X Posizione Y	PUNTO	Posizione X Posizione Y	PUNTO	Posizione X Posizione Y
S01	6887.40 13455.20	S90	67419.25 12180.15	S179	68021.57 11254.33
S02	6884.29 13464.84	S91	67429.65 12172.53	S180	68026.51 11255.34
S03	68850.63 13431.09	S92	67448.25 12155.06	S181	68027.89 11246.34
S04	68866.02 13431.95	S93	67452.98 12149.39	S182	68025.57 11242.34
S05	68880.34 13396.28	S94	67466.66 12137.47	S183	68025.25 11238.34
S06	68902.60 13376.66	S95	67486.34 12122.59	S184	68024.52 11234.34
S07	68918.83 13356.09	S96	67501.94 12110.56	S185	68023.82 11230.34
S08	68937.06 13345.50	S97	67506.13 12102.32	S186	68023.45 11226.34
S09	68954.32 13325.90	S98	67525.92 12092.04	S187	68023.56 11222.34
S10	68959.00 13324.07	S99	67541.71 12076.76	S188	68023.45 11218.34
S11	68962.49 13318.34	S100	67565.50 12061.48	S189	68023.28 11214.34
S12	68972.40 13309.17	S101	67585.33 12046.26	S190	68023.13 11210.34
S13	68978.49 13305.40	S102	67605.10 12031.00	S191	68023.00 11206.34
S14	68990.51 13292.44	S103	67625.72 12016.76	S192	68022.88 11202.34
S15	68999.03 13276.14	S104	67645.51 12001.48	S193	68023.99 11197.54
S16	69012.40 13274.54	S105	67664.98 11986.15	S194	68023.79 11193.54
S17	69024.90 13263.87	S106	67685.00 11970.77	S195	68024.11 11189.54
S18	69028.00 13260.28	S107	67685.09 11970.92	S196	68024.91 11185.54
S19	69044.45 13241.07	S108	67704.88 11955.40	S197	68024.71 11181.54
S20	69064.09 13225.78	S109	67724.56 11940.23	S198	68024.98 11177.54
S21	69081.78 13210.45	S110	67744.21 11924.77	S199	68024.43 11173.54
S22	69103.51 13195.10	S111	67764.00 11909.50	S200	68024.30 11169.54
S23	69123.23 13179.74	S112	67779.55 11894.49	S201	68024.02 11165.54
S24	69142.96 13164.38	S113	67783.79 11884.22	S202	68024.07 11161.54
S25	69162.69 13149.03	S114	67803.37 11878.84	S203	68024.98 11157.54
S26	69182.41 13133.67	S115	67823.36 11863.66	S204	68024.56 11153.54
S27	69202.39 13118.68	S116	67843.55 11848.38	S205	68024.75 11149.54
S28	69222.11 13103.27	S117	67862.94 11833.11	S206	68024.91 11145.54
S29	69241.84 13087.91	S118	67882.73 11817.83	S207	68024.56 11141.54
S30	69261.36 13072.29	S119	67888.40 11813.45	S208	68024.95 11137.54
S31	69281.05 13056.63	S120	67903.12 11802.55	S209	68024.12 11133.54
S32	69300.55 13040.14	S121	67922.31 11797.27	S210	68024.57 11129.54
S33	69320.81 13023.56	S122	67942.10 11792.00	S211	68024.96 11125.54
S34	69340.84 13006.97	S123	67961.54 11786.72	S212	68024.98 11121.54
S35	69360.57 12990.24	S124	67979.41 11781.39	S213	68024.07 11117.54
S36	69380.28 12973.52	S125	67980.78 11740.28	S214	68024.12 11113.54
S37	69400.39 12956.80	S126	68000.21 11694.92	S215	68024.91 11109.54
S38	69420.24 12950.80	S127	68020.23 11709.58	S216	68024.62 11105.54
S39	69440.09 12935.00	S128	68040.21 11684.63	S217	68024.07 11101.54
S40	69460.94 12919.00	S129	68060.21 11664.63	S218	68024.98 11097.54
S41	69480.79 12903.21	S130	68080.17 11679.76	S219	68024.28 11093.54
S42	69499.34 12887.63	S131	68099.10 11664.92	S220	68024.56 11089.54
S43	69518.13 12872.04	S132	68100.00 11650.08	S221	68024.91 11085.54
S44	69536.84 12856.44	S133	68120.04 11635.37	S222	68024.12 11081.54
S45	69555.85 12841.05	S134	68140.10 11620.70	S223	68024.91 11077.54
S46	69575.17 12825.48	S135	68161.55 11607.45	S224	68024.12 11073.54
S47	69594.06 12809.80	S136	68182.22 11594.27	S225	68024.91 11069.54
S48	69613.53 12794.45	S137	68201.30 11578.15	S226	68024.56 11065.54
S49	69632.97 12779.05	S138	68219.90 11567.80	S227	68024.91 11061.54
S50	69652.12 12763.72	S139	68220.40 11561.97	S228	68024.96 11057.54
S51	69671.01 12748.04	S140	68240.35 11547.02	S229	68024.12 11053.54
S52	69690.05 12732.05	S141	68260.37 11532.00	S230	68024.91 11049.54
S53	69709.06 12716.06	S142	68281.32 11517.03	S231	68024.56 11045.54
S54	69728.04 12700.04	S143	68302.30 11502.04	S232	68024.91 11041.54
S55	69747.05 12684.05	S144	68323.26 11487.04	S233	68024.12 11037.54
S56	69766.06 12668.06	S145	68344.26 11472.00	S234	68024.91 11033.54
S57	69785.04 12652.04	S146	68365.26 11457.00	S235	68024.56 11029.54
S58	69804.05 12636.05	S147	68386.26 11442.00	S236	68024.91 11025.54
S59	69823.06 12620.06	S148	68407.26 11427.00	S237	68024.12 11021.54
S60	69842.08 12604.08	S149	68428.26 11412.00	S238	68024.91 11017.54
S61	69861.09 12588.09	S150	68449.26 11397.00	S239	68024.56 11013.54
S62	69880.07 12572.07	S151	68470.26 11382.00	S240	68024.91 11009.54
S63	69899.02 12556.02	S152	68491.26 11367.00	S241	68024.12 11005.54
S64	69918.04 12540.04	S153	68512.26 11352.00	S242	68024.91 11001.54
S65	69937.03 12524.03	S154	68533.26 11337.00	S243	68024.56 10997.54
S66	69956.03 12508.03	S155	68554.26 11322.00	S244	68024.91 10993.54
S67	69975.05 12492.05	S156	68575.26 11307.00	S245	68024.12 10989.54
S68	69994.07 12476.07	S157	68596.26 11292.00	S246	68024.91 10985.54
S69	70013.09 12460.09	S158	68617.26 11277.00	S247	68024.56 10981.54
S70	70032.03 12444.03	S159	68638.26 11262.00	S248	68024.91 10977.54
S71	70051.04 12428.04	S160	68659.26 11247.00	S249	68024.12 10973.54
S72	70070.04 12412.04	S161	68680.26 11232.00	S250	68024.91 10969.54
S73	70089.05 12396.05	S162	68701.26 11217.00	S251	68024.56 10965.54
S74	70108.09 12380.09	S163	68722.26 11202.00	S252	68024.91 10961.54
S75	70127.04 12364.04	S164	68743.26 11187.00	S253	68024.12 10957.54
S76	70146.06 12348.06	S165	68764.26 11172.00	S254	68024.91 10953.54
S77	70165.09 12332.09	S166	68785.26 11157.00	S255	68024.56 10949.54
S78	70184.06 12316.06	S167	68806.26 11142.00	S256	68024.91 10945.54
S79	70203.08 12300.08	S168	68827.26 11127.00	S257	68024.12 10941.54
S80	70222.01 12284.01	S169	68848.26 11112.00	S258	68024.91 10937.54
S81	70241.03 12268.03	S170	68869.26 11097.00	S259	68024.56 10933.54
S82	70260.05 12252.05	S171	68890.26 11082.00	S260	68024.91 10929.54
S83	70279.07 12236.07	S172	68911.26 11067.00	S261	68024.12 10925.54
S84	70298.07 12220.07	S173	68932.26 11052.00	S262	68024.91 10921.54
S85	70317.09 12204.09	S174	68953.26 11037.00	S263	68024.56 10917.54
S86	70336.09 12188.09	S175	68974.26 11022.00	S264	68024.91 10913.54
S87	70355.03 12172.03	S176	68995.26 11007.00	S265	68024.12 10909.54
S88	70374.07 12156.07	S177	69016.26 10992.00	S266	68024.91 10905.54
S89	70393.04 12140.04	S178	69037.26 10977.00	S267	68024.56 10901.54

TRACCIAMENTO

Scala 1:500



QUADRO D'UNIONE - Scala 1:200000



COMMITTENTE:

DIREZIONE LAVORI:

APPALTATORE:  
 MANDATARIA:   
 MANDATARI:

PROGETTAZIONE:  
 MANDATARIA:   
 MANDATARI:

PROGETTO ESECUTIVO DI VARIANTE  
**DIRETTRICE FERROVIARIA MESSINA - CATANIA - PALERMO  
 NUOVO COLLEGAMENTO PALERMO - CATANIA  
 RADDOPPIO DELLA TRATTA BICOCCA - CATENANUOVA**

DISEGNO  
 ID - IDROLOGIA E IDRAULICA  
 ATTRAVERSAMENTI MINORI  
 Planimetria, tracciamento e pianta scavi Canale IN20-IN21-IN03 Tav.6/11

APPALTATORE		PROGETTAZIONE						
DIRETTORE TECNICO	Ing. G. PARISI	DIRETTORE DELLA PROGETTAZIONE	Ing. G. TANZI					
COMMESSA	LOTTO	FASE	ENTE TIPO DOC.	OPERADISCIPLINA	PROGR.	REV.	SCALA:	
RS39	10	V	ZI	P8	101200	006	A 1:500	
Rev.	Descrizione	Redatto	Data	Verificato	Data	Approvato	Data	Autore/Rev. Data
A	Emissione a seguito di GdS n. 1807	F. Ross	06/02/20	C. Bellini	06/02/20	G. Tanzi	06/02/20	Ing. G. TANZI