



| | | | | |
|---------------|-----------|--------------|------------|-------|
| livello prog. | STMG | N° elaborato | DATA | SCALA |
| PD | 202102497 | RS06ADD52a | 26.06.2023 | VARIE |

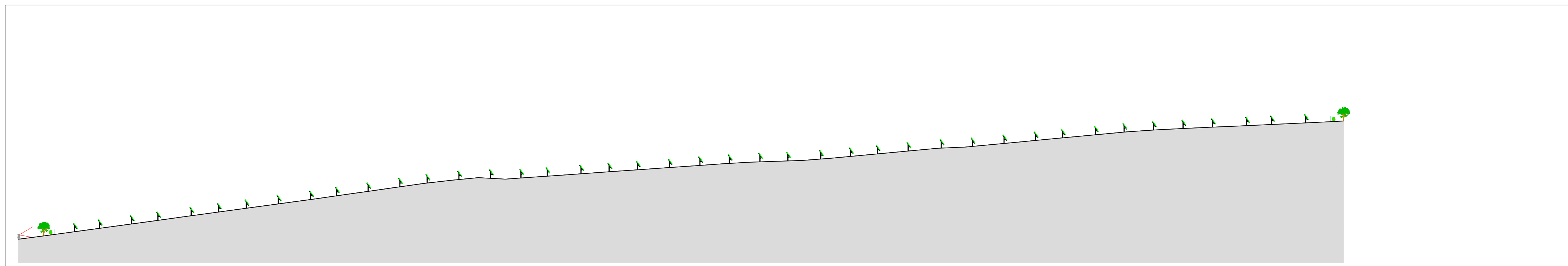
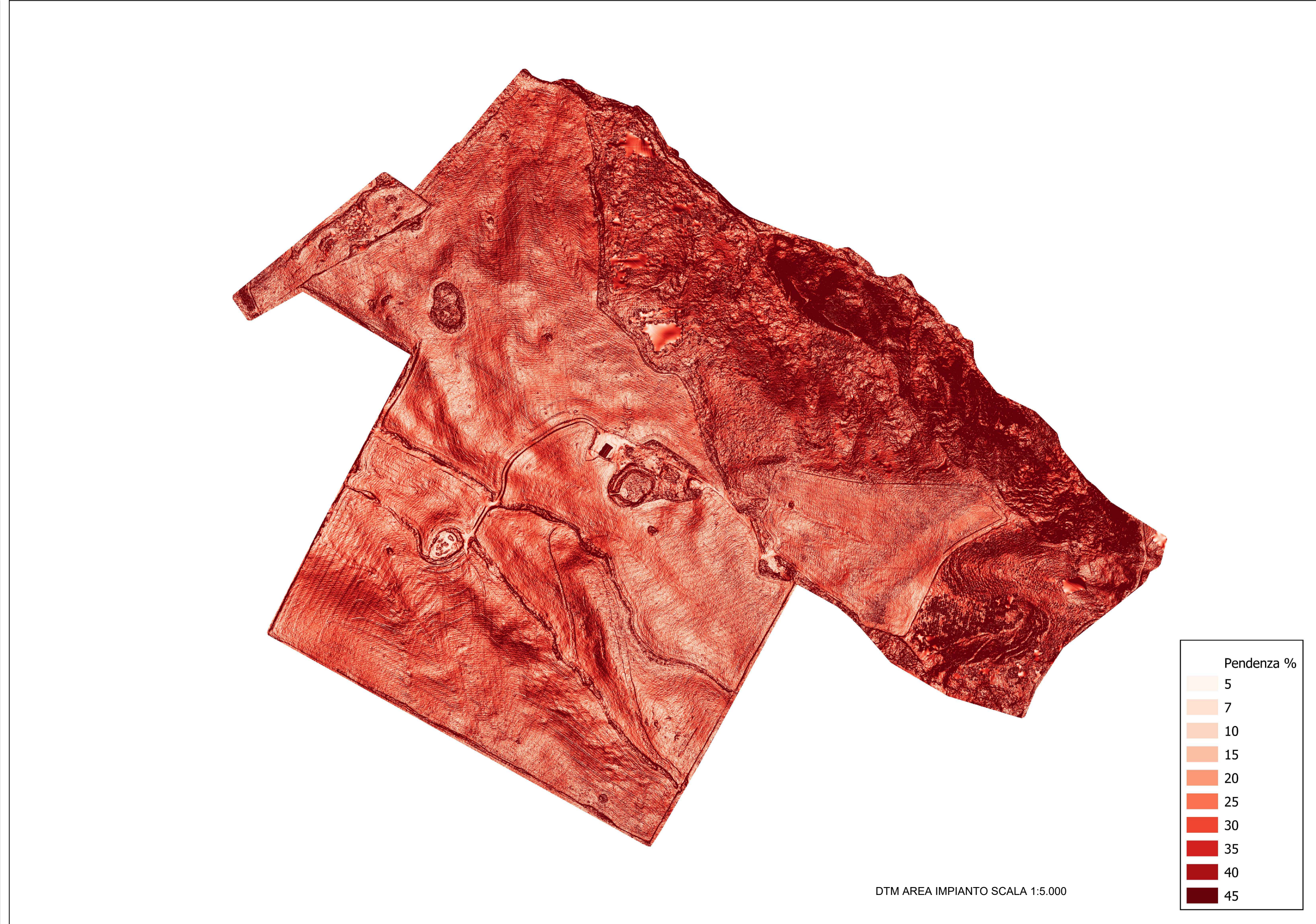
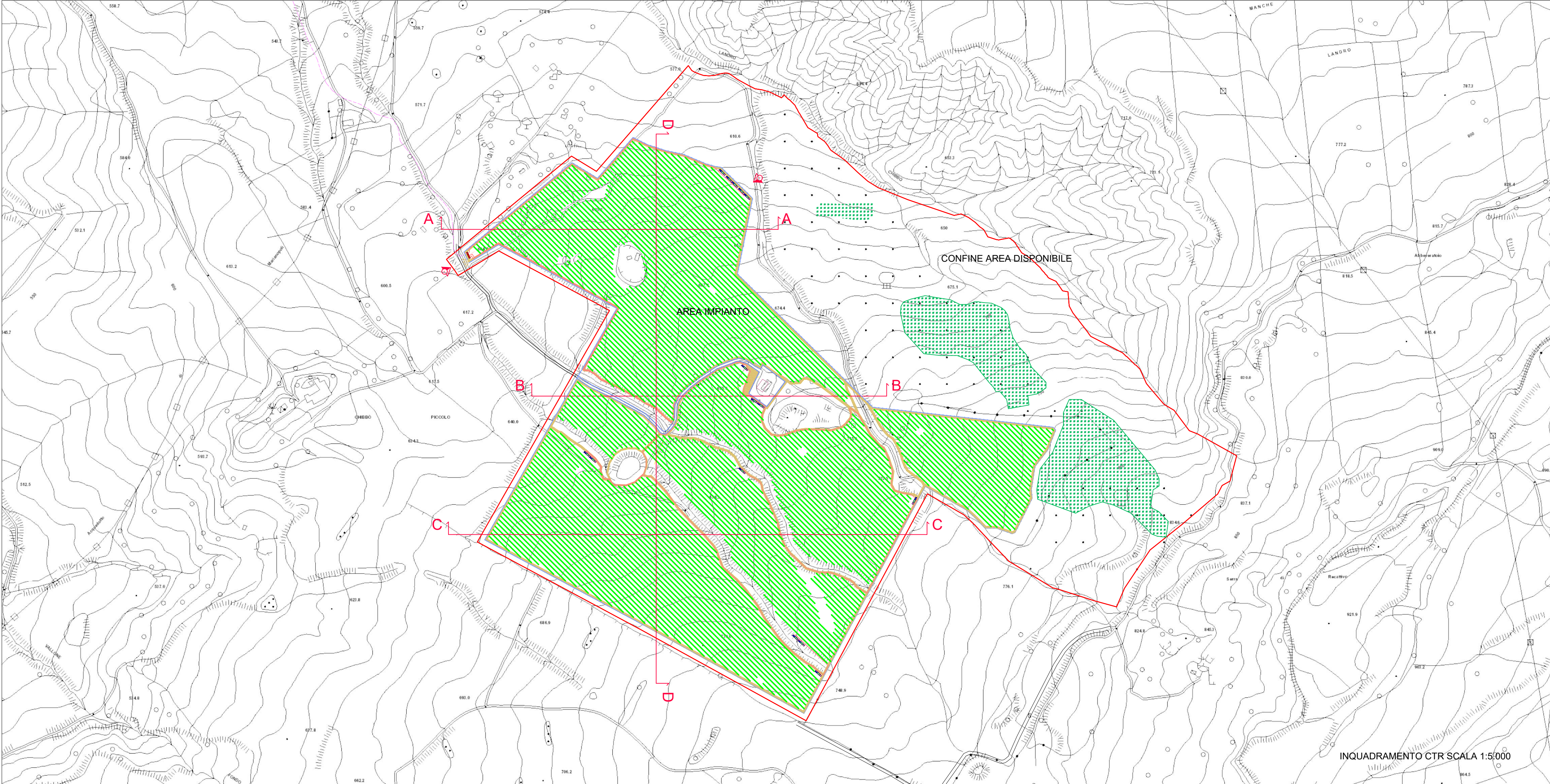
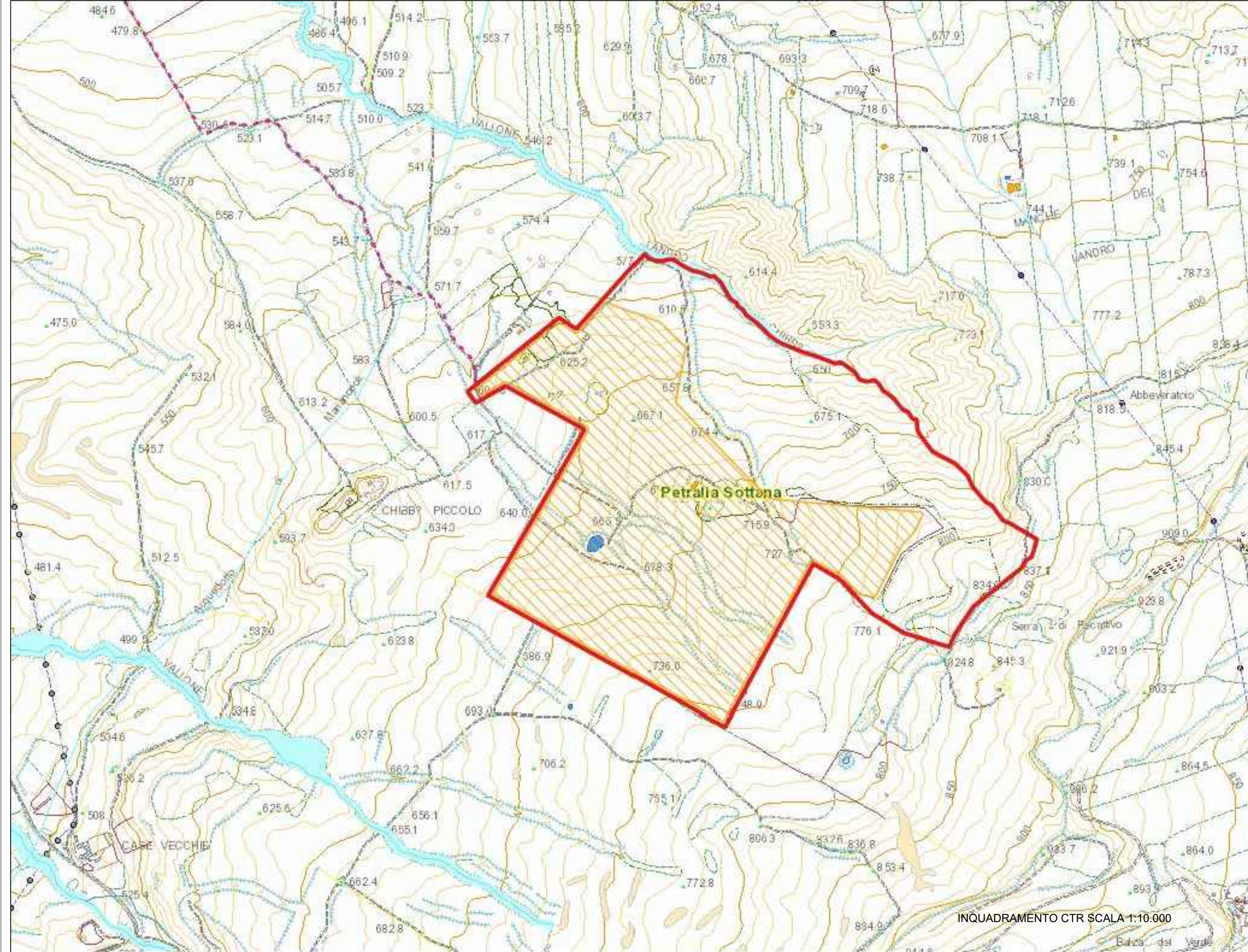
| REVISIONI | | | | | |
|-----------|------|-------------|----------|------------|-----------|
| REV. | DATA | DESCRIZIONE | ESEGUITO | VERIFICATO | APPROVATO |
| | | | | | |

RICHIEDENTE E PRODUTTORE
 HF SOLAR 12 S.r.l.

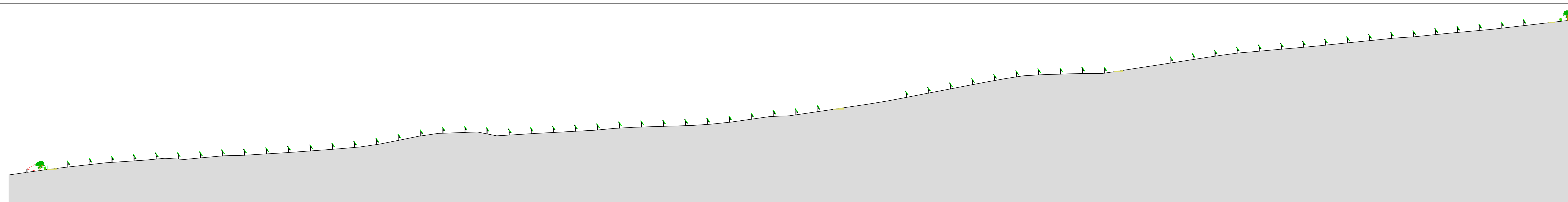
ENTE

PROGETTAZIONE
HORIZON FIRM
 Via Francesco Scudato 9/11 - 90144 Palermo (PA)
 Arch. A. Calabrese Ing. D. Siniccia
 Arch. M. Gallo Ing. A. Costantino
 Arch. S. Meroneo Ing. C. Chiaruzzi
 Arch. F. G. Mazza Ing. G. Schillaci
 Arch. G. Volpe Ing. G. Ruffa
 Dott. Agr. B. Micuzzo Ing. M. C. Masca

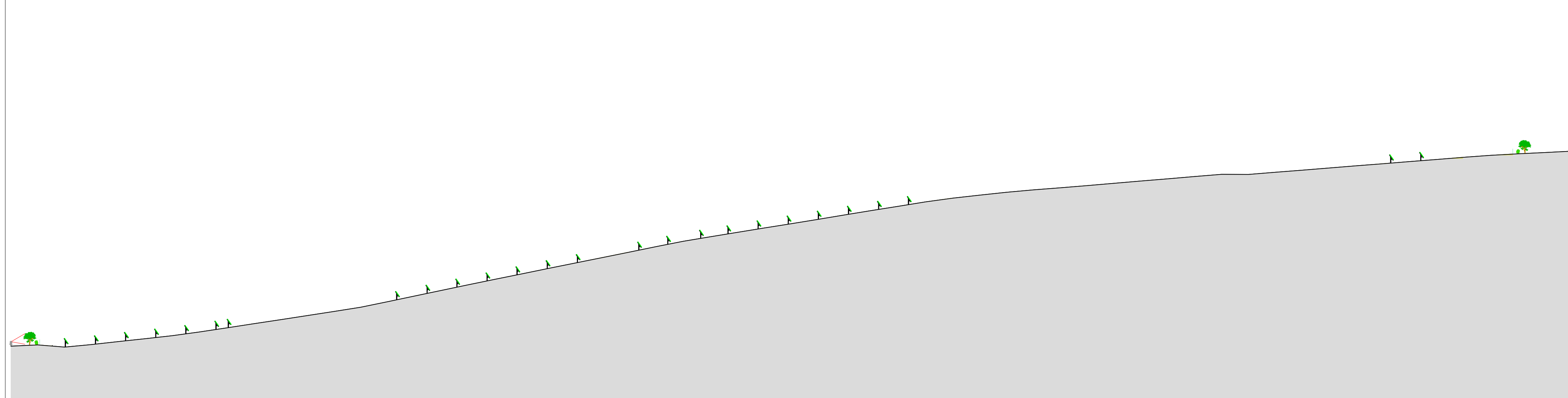
PROF. ING. GIUSEPPE SCHILLACI
 N. 1234567890
 10/06/2023



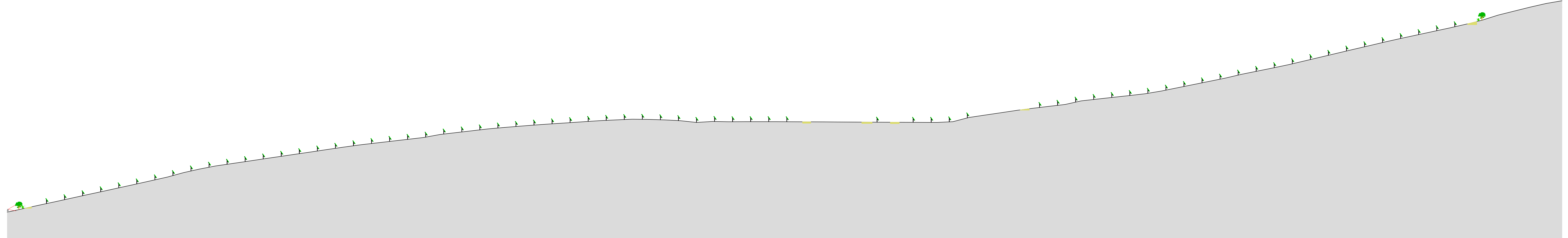
SEZIONE A - A



SEZIONE C - C



SEZIONE B - B



SEZIONE D - D