

Legenda

Opera 1

Nuova SE RTN 380/150kV di Caltanissetta

Nuova SE RTN 380/150kV di Caltanissetta - Viabilità di accesso

Limiti Amministrativi

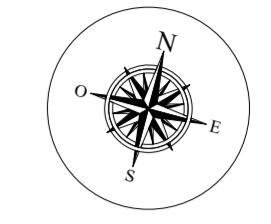
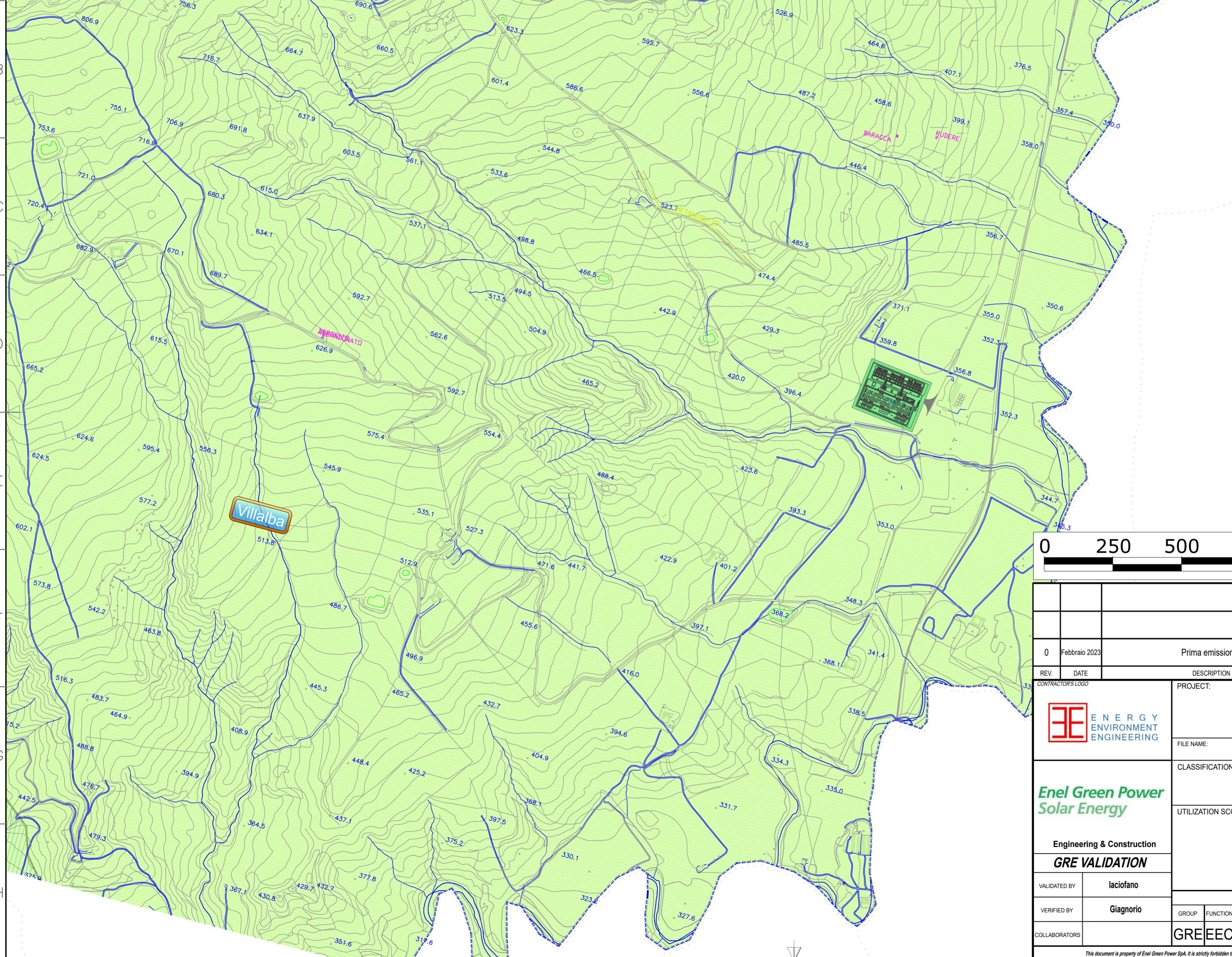
ZONA AGRICOLA E2

ZONA ARCHEOLOGICA

ZONA BOSCHIVA

FASCIA DI RISPETTO DELLE AREE BOSCHIVE

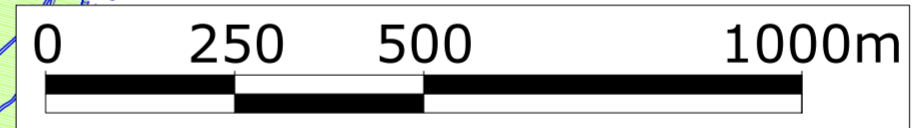
FASCE FLUVIALI (L.g. Galasso)



Castellana Sicula

Petralia Sottana

Villalba



0	Febbraio 2023	Prima emissione	Saraceno	Giagnorio	Iaciolfano	
REV.	DATE	DESCRIPTION	PREPARED BY	COLLABORATORS	VERIFIED BY	VALIDATED BY

		PTO - Nuova SE RTN 380/150kV "Caltanissetta" in entra esce sulla linea a 380kV "Chiaromonte Gulfi - Ciminna"							
		FILE NAME:	GRE.EEC.D.99.IT.W.14362.16.051.00						
Engineering & Construction GRE VALIDATION		CLASSIFICATION:	FORMAT:	SCALE:	PLOT SCALE:	SHEET:			
VALIDATED BY: Iaciolfano VERIFIED BY: Giagnorio			A2	1:10000	1 di 1 of 1				
COLLABORATORS:		UTILIZATION SCOPE:	TITLE:						
			SE RTN 380/150kV di Caltanissetta Planimetria con stralci PRG - Comune di Villalba						
GRE CODE									
GROUP	FUNCTION	TYPE	ISSUER	COUNTRY	TEC.	PLANT	SYSTEM	PROGRESSIVE	REVISION
GRE	EEC	D	99	IT	W	1436216	05	100	

This document is property of Enel Green Power SpA. It is strictly forbidden to reproduce this document, in whole or in part, and to provide to others any related information without the previous written consent by Enel Green Power SpA.