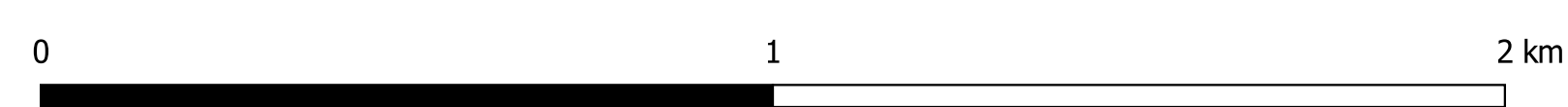
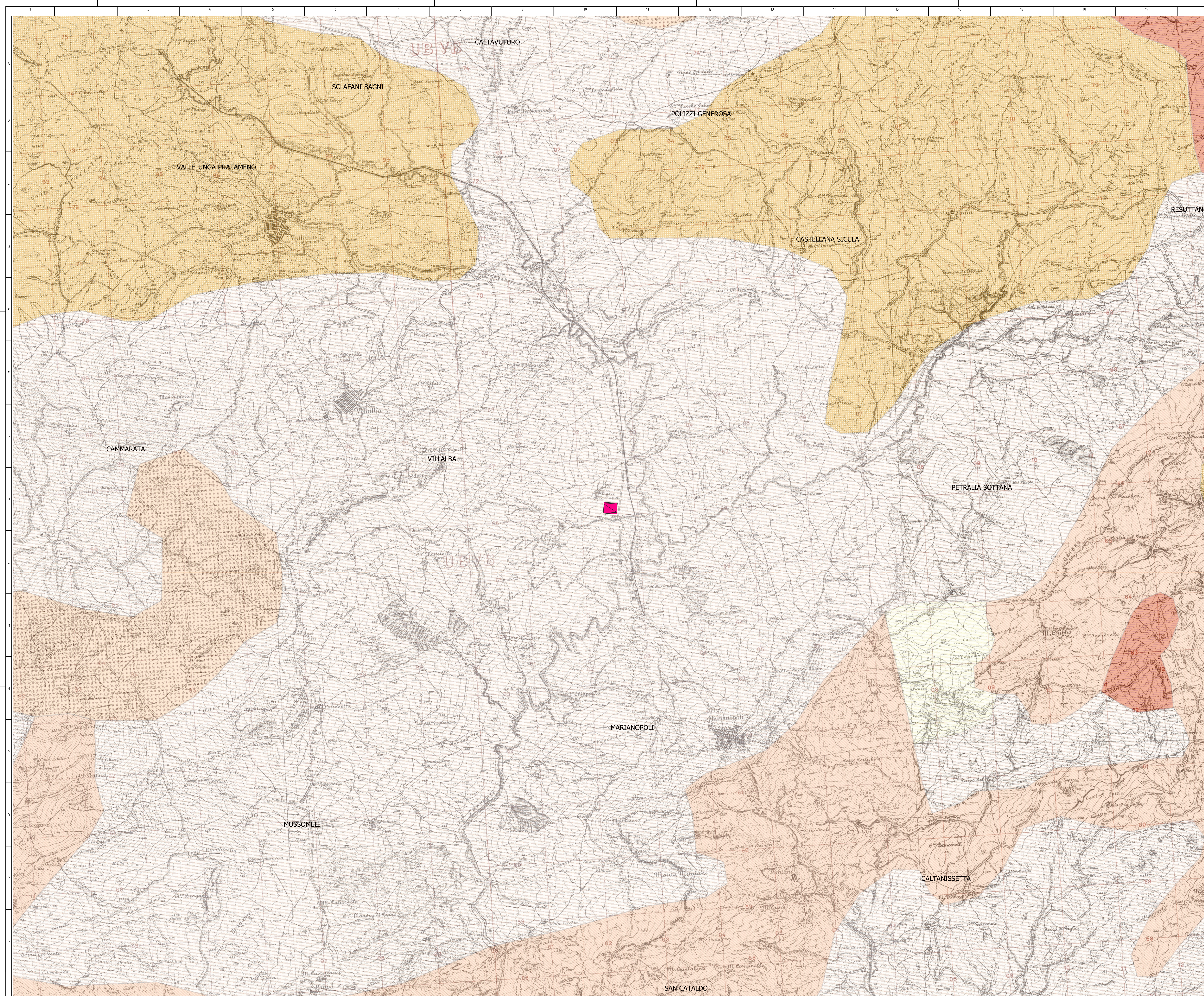




LEGENDA

- SSE RTN 380/150kV Caltanissetta
- Argille e Marne (Miocene)
- Arenarie e Conglomerati, talora Torbiditici (Miocene Medio-Inferiore)
- Unità Arenacee e Arenaceo-marnose, torbiditiche (Paleogene)
- Formazione Gessoso-Solfifera (Miocene superiore)



00	28/03/2023	Prima emissione	A. Santambrogio	G. Alfano	G. Coburi				
REV.	DATE	DESCRIPTION	PREPARED	CHECKED	APPROVED				
		Costruzione dell'impianto "Caltavuturo Estensione"							
		FILE NAME: GRE.EEC.D.99.IT.W.14362.16.064.00							
		CLASSIFICATION: PUBLIC	FORMAT: A0	SCALE: 1:25.000	PLOT SCALE: 1:1	SHEET: 1 di 1			
		TITLE: Stazione RTN 380/150kV di Caltanissetta - Planimetria Geolitologica							
		BASIC DESIGN							
EGP VALIDATION									
VALIDATED BY:	Incolore								
VERIFIED BY:	Tono								
		ESP CODE							
		GROUP: GRE.EEC	FUNCTION: D	TYPE: 99	ISSUE: IT	COUNTRY: W	TEC: 14	PLANT: 36	SYSTEM: 21
		PROGRESSIVE REVISION: 1606400							
		COLLABORATORI: GRE.EEC.D.99.IT.W.14362.16.064.00							