
	<i>Customer/Committente</i> <i>Enel Green Power Solar Energy S.r.l.</i>		<i>Project Number/Numero Progetto</i>	
	<i>General Project/Progetto Generale</i> <i>Valutazione Rumore Ambientale</i>		<i>Activity/Attività effettuata</i> <i>Misure acustiche esterne</i>	
	<i>Date/Data:</i> 07-08/10/2020	<i>Revision/Revisione:</i> 01.00	<i>Location/Località:</i> Caltavuturo (PA)	
	<i>Project Manager/Responsabile Progetto:</i> SM		<i>Sheet/Pagina:</i> 1	

## *Misure di Rumore Ambientale*

### *Parco Eolico Caltavuturo*

#### *Misure a breve termine Ante Operam*



	<i>Customer/Committente</i> <b>Enel Green Power Solar Energy S.r.l.</b>		<i>Project Number/Numero Progetto</i>	
	<i>General Project/Progetto Generale</i> <b>Valutazione Rumore Ambientale</b>		<i>Activity/Attività effettuata</i> <b>Misure acustiche esterne</b>	
	<i>Date/Data:</i> 07-08/10/2020	<i>Revision/Revisione:</i> 01.00	<i>Location/Località:</i> Caltavuturo (PA)	
	<i>Project Manager/Responsabile Progetto:</i> SM			<i>Sheet/Pagina:</i> 2

### BT01 Mattino

#### Valori acustici principali

*Leq(A):* 54.2

*Lmin(A):* 42.1 dBA    *Lmax(A):* 74.3 dBA

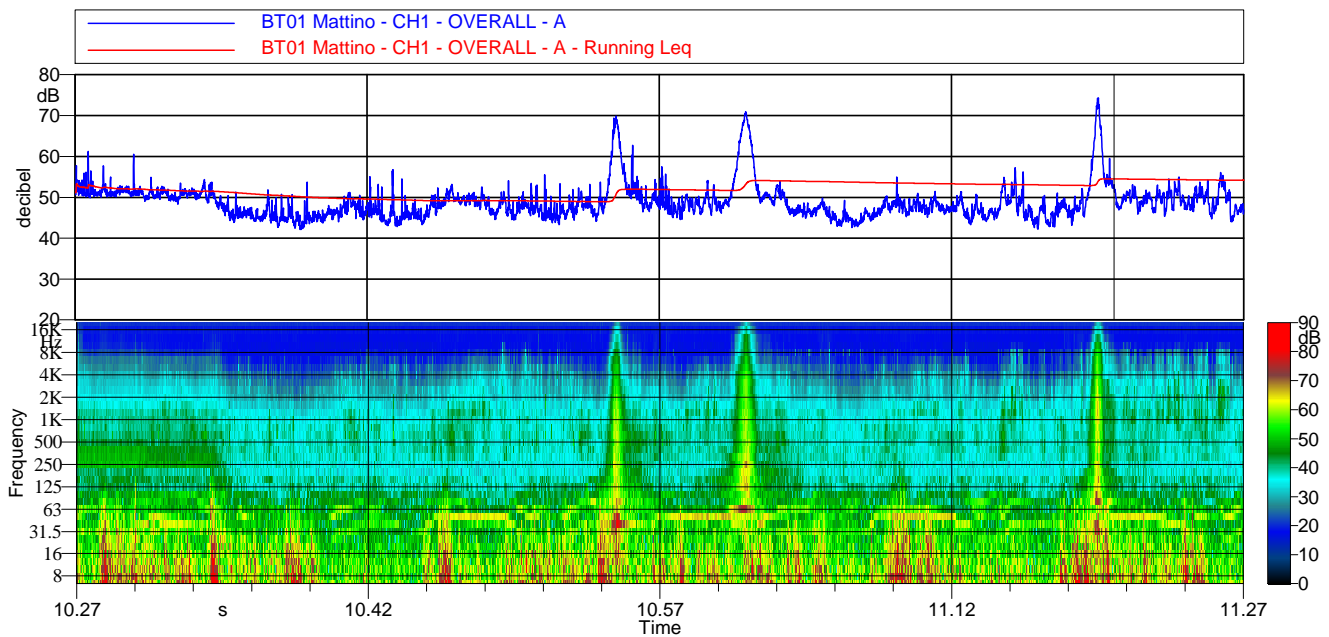
*L01:* 51.6 dBA    *L10:* 34.9 dBA

*L50:* 28.5 dBA    *L66:* 26.6 dBA

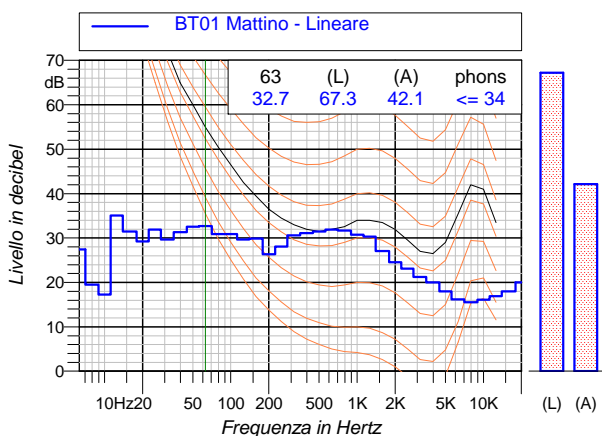
*L90:* 23.5 dBA    *L95:* 22.5 dBA



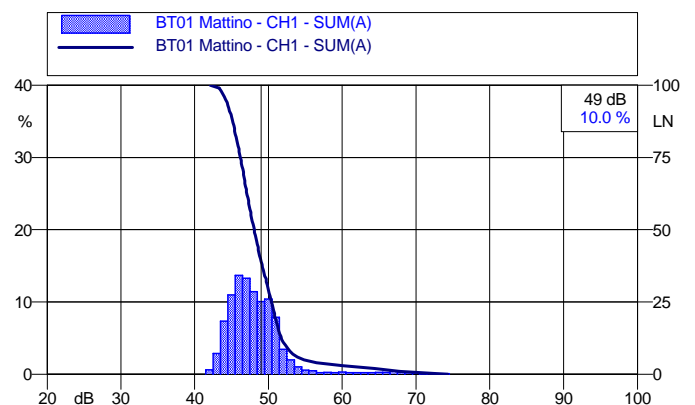
#### Andamento temporale dei livelli pesati A e dello spettro




#### Spettro dei minimi (per ricerca componenti tonali)



#### Curve cumulative e distributiva dei livelli sonori



	<i>Costumer/Committente</i> <b>Enel Green Power Solar Energy S.r.l.</b>		<i>Project Number/Numero Progetto</i>
	<i>General Project/Progetto Generale</i> <b>Valutazione Rumore Ambientale</b>		<i>Activity/Attività effettuata</i> <b>Misure acustiche esterne</b>
	<i>Date/Data:</i> 07-08/10/2020	<i>Revision/Revisione:</i> 01.00	<i>Location/Località:</i> Caltavuturo (PA)
	<i>Project Manager/Responsabile Progetto:</i> SM		<i>Sheet/Pagina:</i> 3

### BT01 Pomeriggio

#### Valori acustici principali

*Leq(A):* 51.8

*Lmin(A):* 40.6 dBA    *Lmax(A):* 73.8 dBA

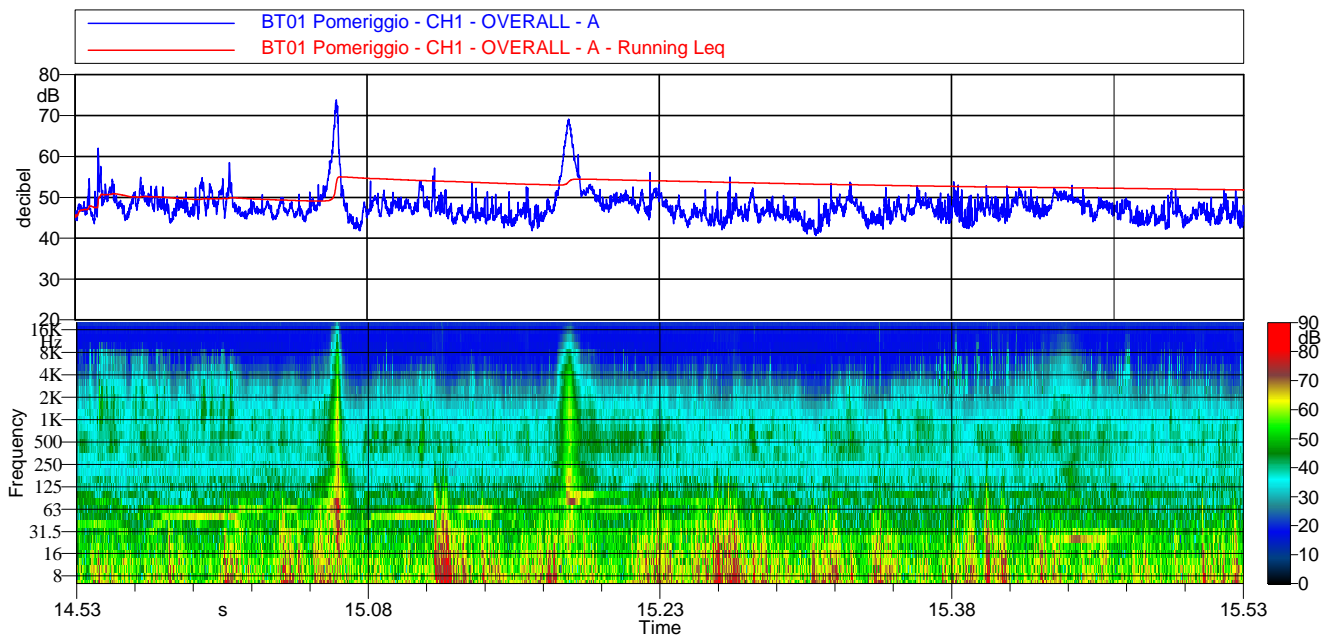
*L01:* 46.9 dBA    *L10:* 33.4 dBA

*L50:* 25.3 dBA    *L66:* 23.8 dBA

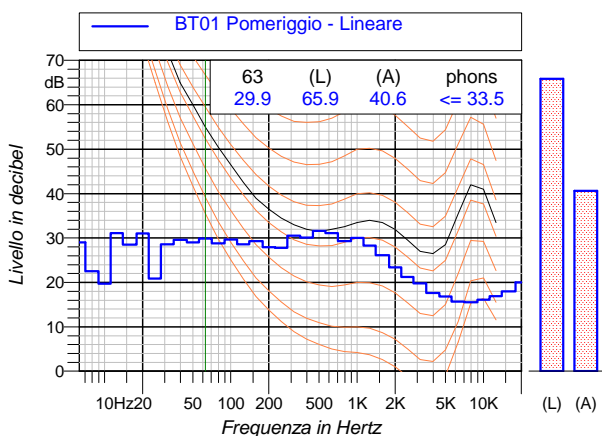
*L90:* 21.5 dBA    *L95:* 20.7 dBA



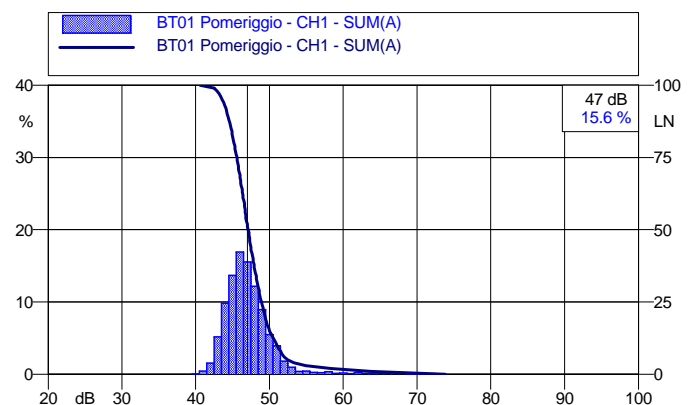
#### Andamento temporale dei livelli pesati A e dello spettro




#### Spettro dei minimi (per ricerca componenti tonali)



#### Curve cumulative e distributiva dei livelli sonori



	<i>Costumer/Committente</i> <b>Enel Green Power Solar Energy S.r.l.</b>		<i>Project Number/Numero Progetto</i>
	<i>General Project/Progetto Generale</i> <b>Valutazione Rumore Ambientale</b>		<i>Activity/Attività effettuata</i> <b>Misure acustiche esterne</b>
	<i>Date/Data:</i> 07-08/10/2020	<i>Revision/Revisione:</i> 01.00	<i>Location/Località:</i> Caltavuturo (PA)
	<i>Project Manager/Responsabile Progetto:</i> SM		<i>Sheet/Pagina:</i> 4

### BT01 Notte

#### Valori acustici principali

*Leq(A):* 48.8

*Lmin(A):* 40.6 dBA    *Lmax(A):* 61.1 dBA

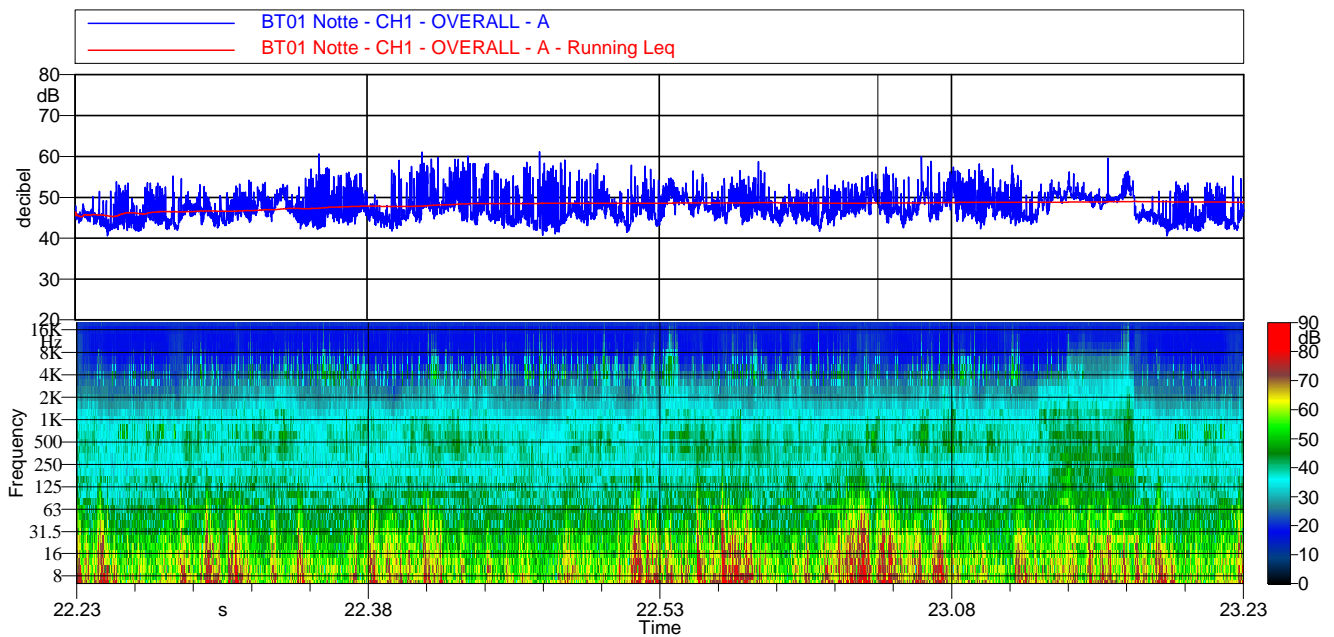
*L01:* 54.2 dBA    *L10:* 44.9 dBA

*L50:* 25.7 dBA    *L66:* 24.1 dBA

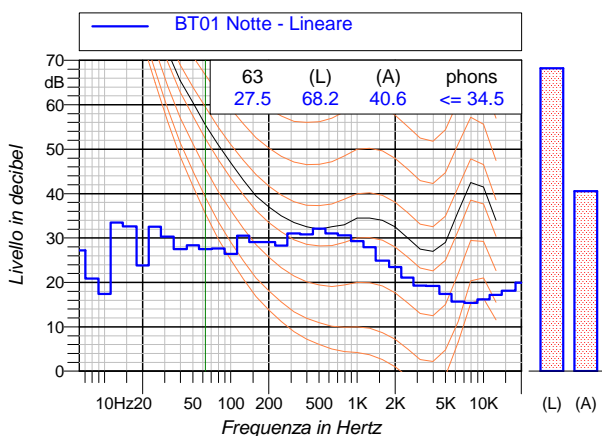
*L90:* 22.1 dBA    *L95:* 21.5 dBA



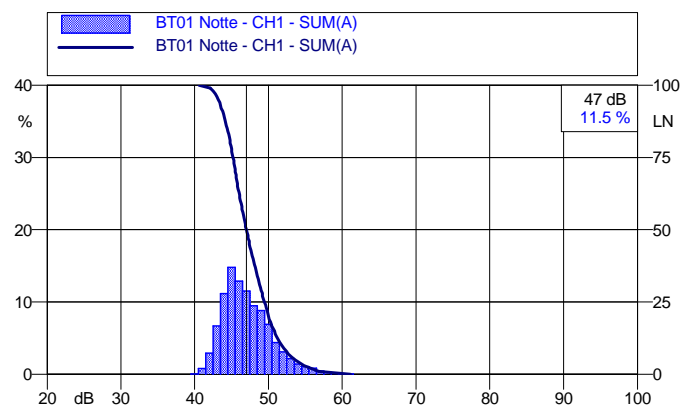
#### Andamento temporale dei livelli pesati A e dello spettro




#### Spettro dei minimi (per ricerca componenti tonali)



#### Curve cumulativa e distributiva dei livelli sonori



	<i>Customer/Committente</i> <b>Enel Green Power Solar Energy S.r.l.</b>		<i>Project Number/Numero Progetto</i>	
	<i>General Project/Progetto Generale</i> <b>Valutazione Rumore Ambientale</b>		<i>Activity/Attività effettuata</i> <b>Misure acustiche esterne</b>	
	<i>Date/Data:</i> 07-08/10/2020	<i>Revision/Revisione:</i> 01.00	<i>Location/Località:</i> Caltavuturo (PA)	
	<i>Project Manager/Responsabile Progetto:</i> SM			<i>Sheet/Pagina:</i> 5

### BT02 Mattino

#### Valori acustici principali

*Leq(A):* 47.2

*Lmin(A):* 42.3 dBA    *Lmax(A):* 59.3 dBA

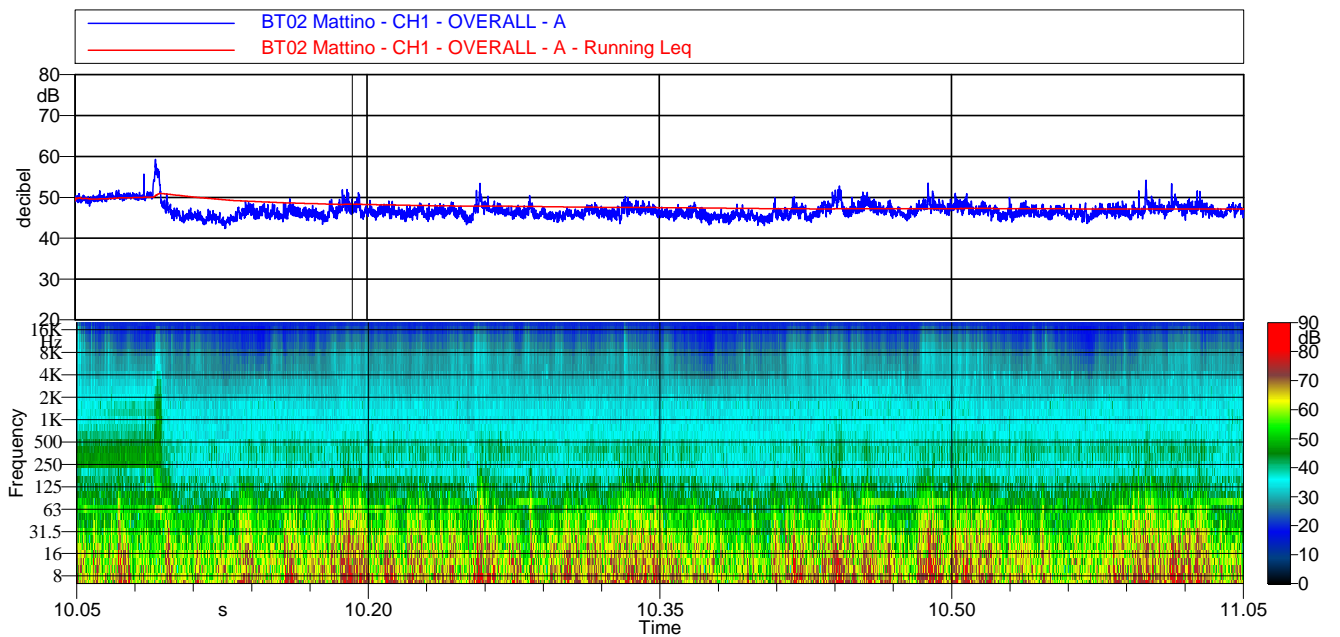
*L01:* 51.6 dBA    *L10:* 49.1 dBA

*L50:* 46.4 dBA    *L66:* 45.9 dBA

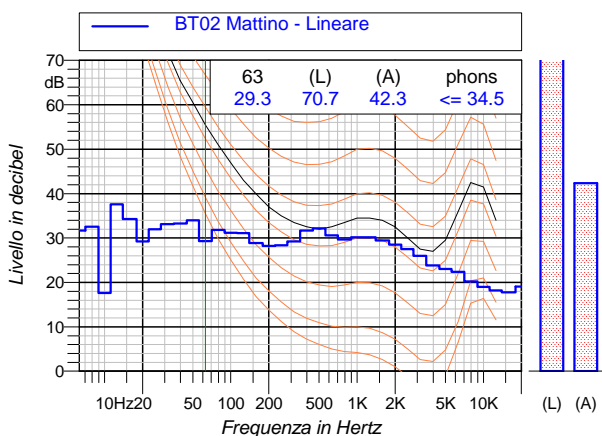
*L90:* 44.9 dBA    *L95:* 44.5 dBA



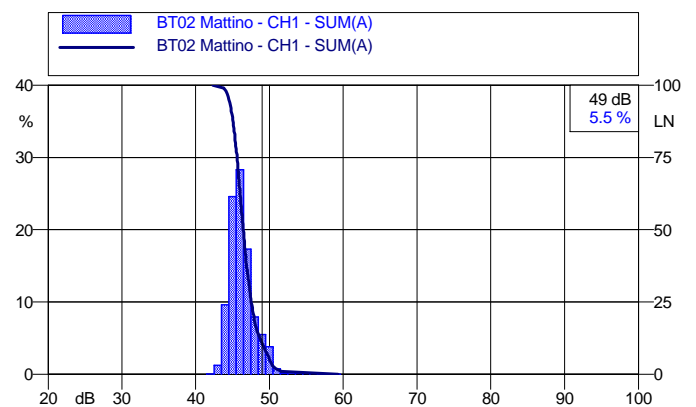
#### Andamento temporale dei livelli pesati A e dello spettro




#### Spettro dei minimi (per ricerca componenti tonali)



#### Curve cumulative e distributiva dei livelli sonori



	<i>Customer/Committente</i> <b>Enel Green Power Solar Energy S.r.l.</b>		<i>Project Number/Numero Progetto</i>
	<i>General Project/Progetto Generale</i> <b>Valutazione Rumore Ambientale</b>		<i>Activity/Attività effettuata</i> <b>Misure acustiche esterne</b>
	<i>Date/Data:</i> 07-08/10/2020	<i>Revision/Revisione:</i> 01.00	<i>Location/Località:</i> Caltavuturo (PA)
	<i>Project Manager/Responsabile Progetto:</i> SM		<i>Sheet/Pagina:</i> 6

### BT02 Pomeriggio

#### Valori acustici principali

*Leq(A):* 47.0

*Lmin(A):* 41.6 dBA    *Lmax(A):* 59.0 dBA

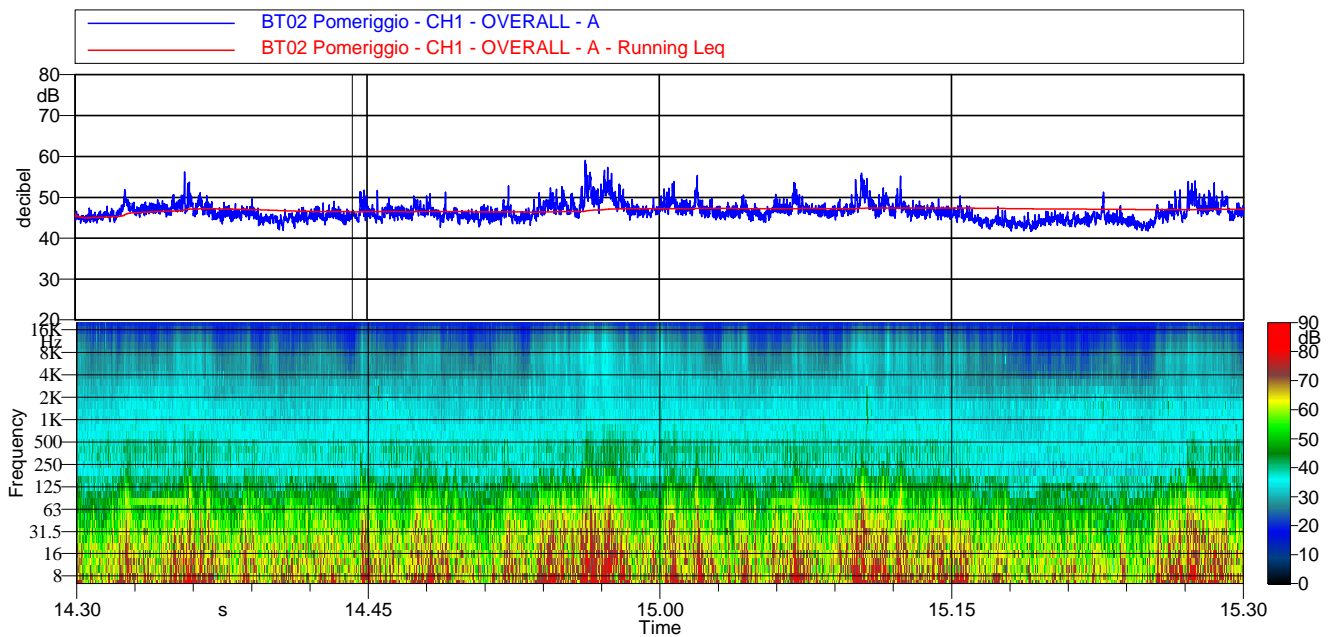
*L01:* 53.3 dBA    *L10:* 49.0 dBA

*L50:* 46.1 dBA    *L66:* 45.4 dBA

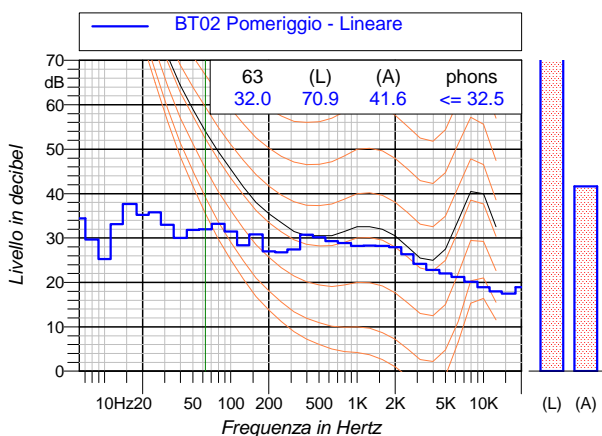
*L90:* 44.1 dBA    *L95:* 43.5 dBA



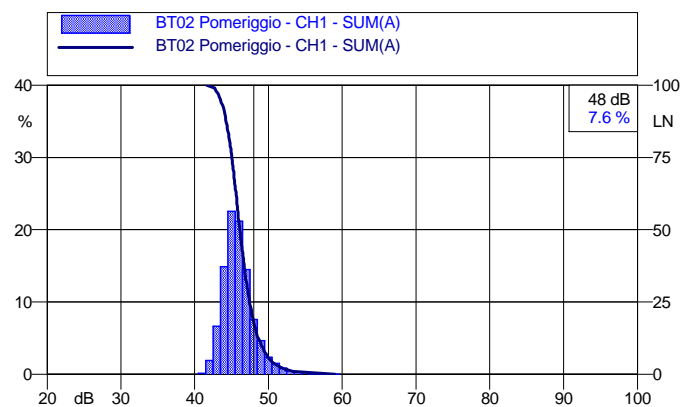
#### Andamento temporale dei livelli pesati A e dello spettro




#### Spettro dei minimi (per ricerca componenti tonali)



#### Curve cumulativa e distributiva dei livelli sonori



	<i>Customer/Committente</i> <b>Enel Green Power Solar Energy S.r.l.</b>		<i>Project Number/Numero Progetto</i>	
	<i>General Project/Progetto Generale</i> <b>Valutazione Rumore Ambientale</b>		<i>Activity/Attività effettuata</i> <b>Misure acustiche esterne</b>	
	<i>Date/Data:</i> 07-08/10/2020	<i>Revision/Revisione:</i> 01.00	<i>Location/Località:</i> Caltavuturo (PA)	
	<i>Project Manager/Responsabile Progetto:</i> SM			<i>Sheet/Pagina:</i> 7

## BT02 Notte

### Valori acustici principali

*Leq(A):* 46.4

*Lmin(A):* 42.2 dBA    *Lmax(A):* 59.3 dBA

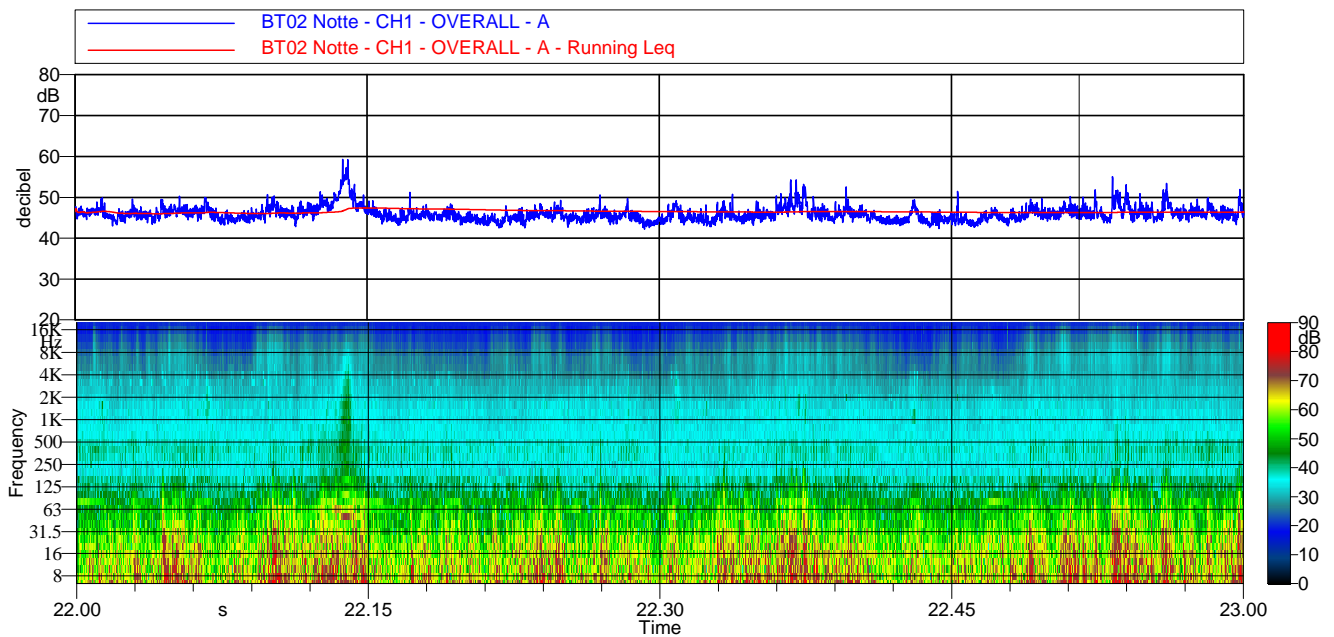
*L01:* 36.2 dBA    *L10:* 32.2 dBA

*L50:* 29.4 dBA    *L66:* 28.6 dBA

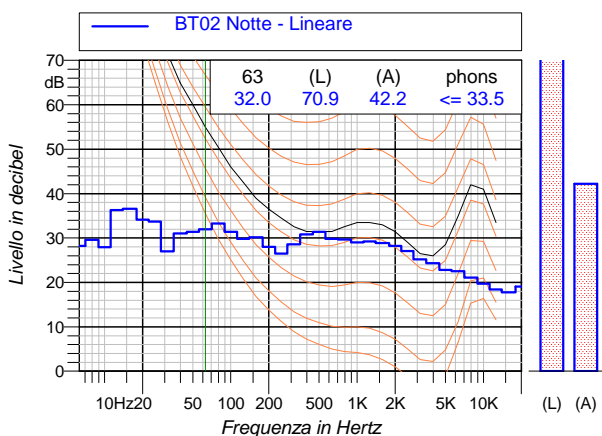
*L90:* 27.0 dBA    *L95:* 26.5 dBA



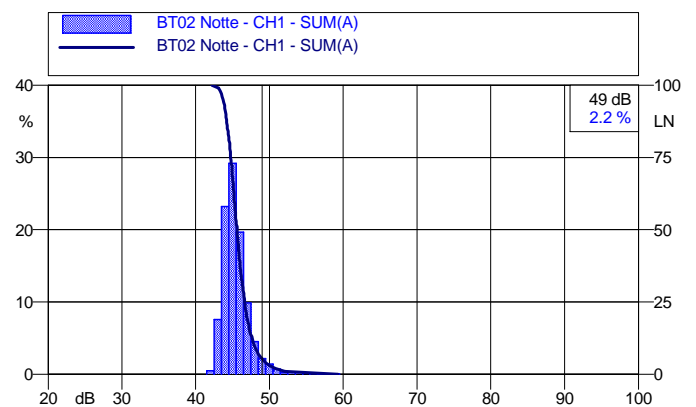
### Andamento temporale dei livelli pesati A e dello spettro




### Spettro dei minimi (per ricerca componenti tonali)



### Curve cumulativa e distributiva dei livelli sonori



	<i>Costumer/Committente</i> <b>Enel Green Power Solar Energy S.r.l.</b>		<i>Project Number/Numero Progetto</i>
	<i>General Project/Progetto Generale</i> <b>Valutazione Rumore Ambientale</b>		<i>Activity/Attività effettuata</i> <b>Misure acustiche esterne</b>
	<i>Date/Data:</i> 07-08/10/2020	<i>Revision/Revisione:</i> 01.00	<i>Location/Località:</i> Caltavuturo (PA)
	<i>Project Manager/Responsabile Progetto:</i> SM		<i>Sheet/Pagina:</i> 8

### BT03 Mattino

#### Valori acustici principali

*Leq(A):* 56.3

*Lmin(A):* 38.0 dBA    *Lmax(A):* 76.0 dBA

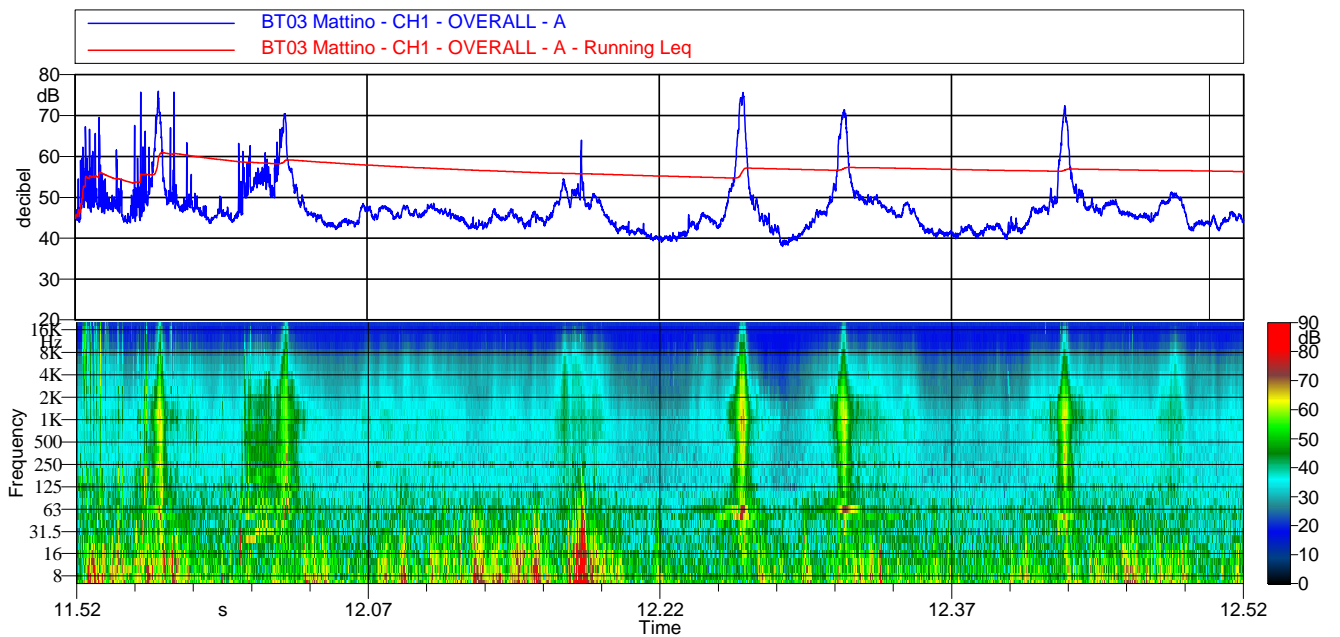
*L01:* 70.5 dBA    *L10:* 53.2 dBA

*L50:* 45.8 dBA    *L66:* 44.5 dBA

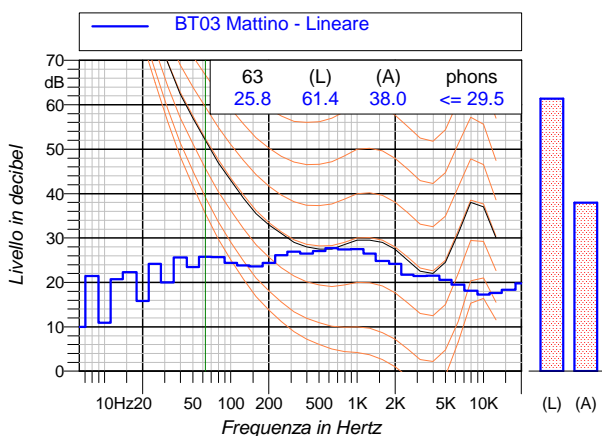
*L90:* 41.5 dBA    *L95:* 40.6 dBA



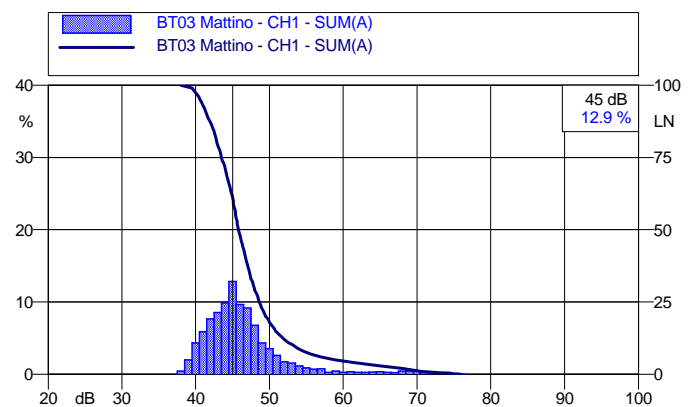
#### Andamento temporale dei livelli pesati A e dello spettro




#### Spettro dei minimi (per ricerca componenti tonali)



#### Curve cumulative e distributiva dei livelli sonori





	<i>Customer/Committente</i> <b>Enel Green Power Solar Energy S.r.l.</b>		<i>Project Number/Numero Progetto</i>
	<i>General Project/Progetto Generale</i> <b>Valutazione Rumore Ambientale</b>		<i>Activity/Attività effettuata</i> <b>Misure acustiche esterne</b>
	<i>Date/Data:</i> 07-08/10/2020	<i>Revision/Revisione:</i> 01.00	<i>Location/Località:</i> Caltavuturo (PA)
	<i>Project Manager/Responsabile Progetto:</i> SM		<i>Sheet/Pagina:</i> 9

### BT03 Pomeriggio

#### Valori acustici principali

*Leq(A):* 56.9

*Lmin(A):* 39.7 dBA    *Lmax(A):* 76.6 dBA

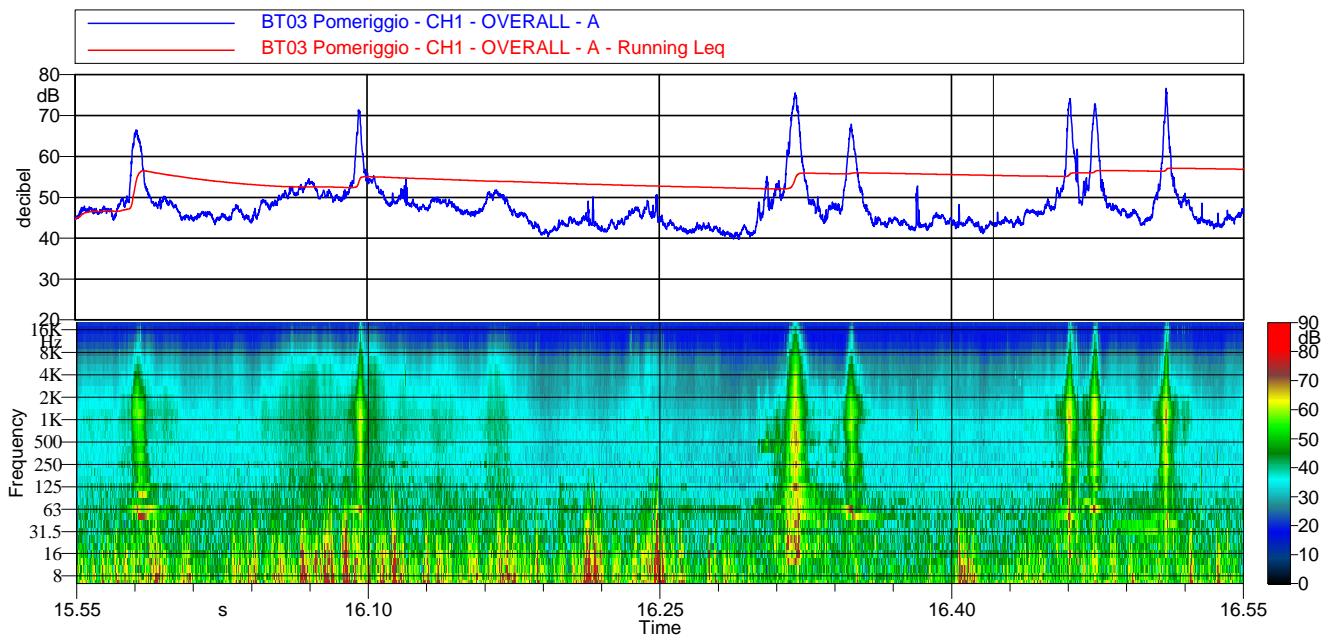
*L01:* 71.4 dBA    *L10:* 53.6 dBA

*L50:* 46.5 dBA    *L66:* 44.9 dBA

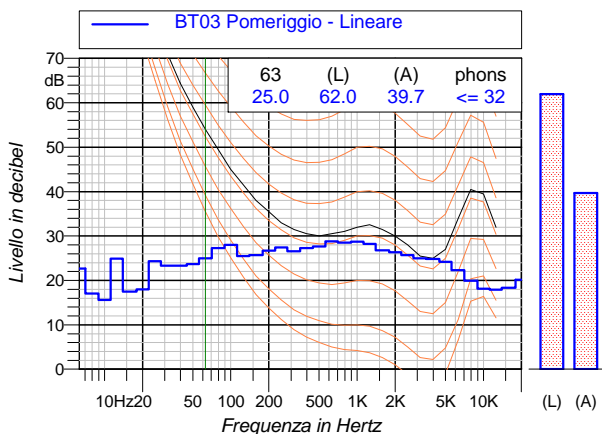
*L90:* 42.7 dBA    *L95:* 41.9 dBA



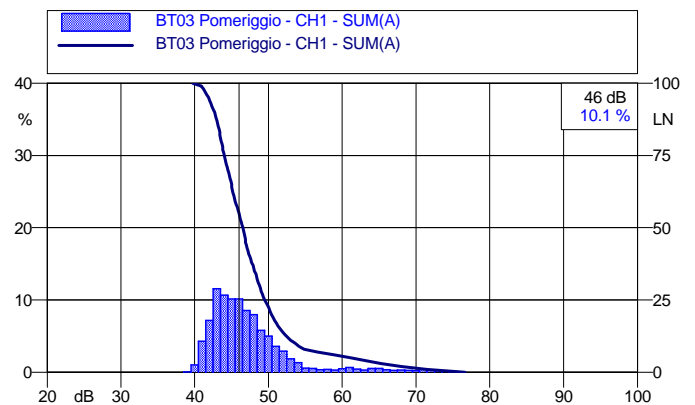
#### Andamento temporale dei livelli pesati A e dello spettro




#### Spettro dei minimi (per ricerca componenti tonali)



#### Curve cumulativa e distributiva dei livelli sonori



	<i>Costumer/Committente</i> <b>Enel Green Power Solar Energy S.r.l.</b>		<i>Project Number/Numero Progetto</i>
	<i>General Project/Progetto Generale</i> <b>Valutazione Rumore Ambientale</b>		<i>Activity/Attività effettuata</i> <b>Misure acustiche esterne</b>
	<i>Date/Data:</i> 07-08/10/2020	<i>Revision/Revisione:</i> 01.00	<i>Location/Località:</i> Caltavuturo (PA)
	<i>Project Manager/Responsabile Progetto:</i> SM		<i>Sheet/Pagina:</i> 10

### BT03 Notte

#### Valori acustici principali

*Leq(A):* 50.7

*Lmin(A):* 41.7 dBA    *Lmax(A):* 82.7 dBA

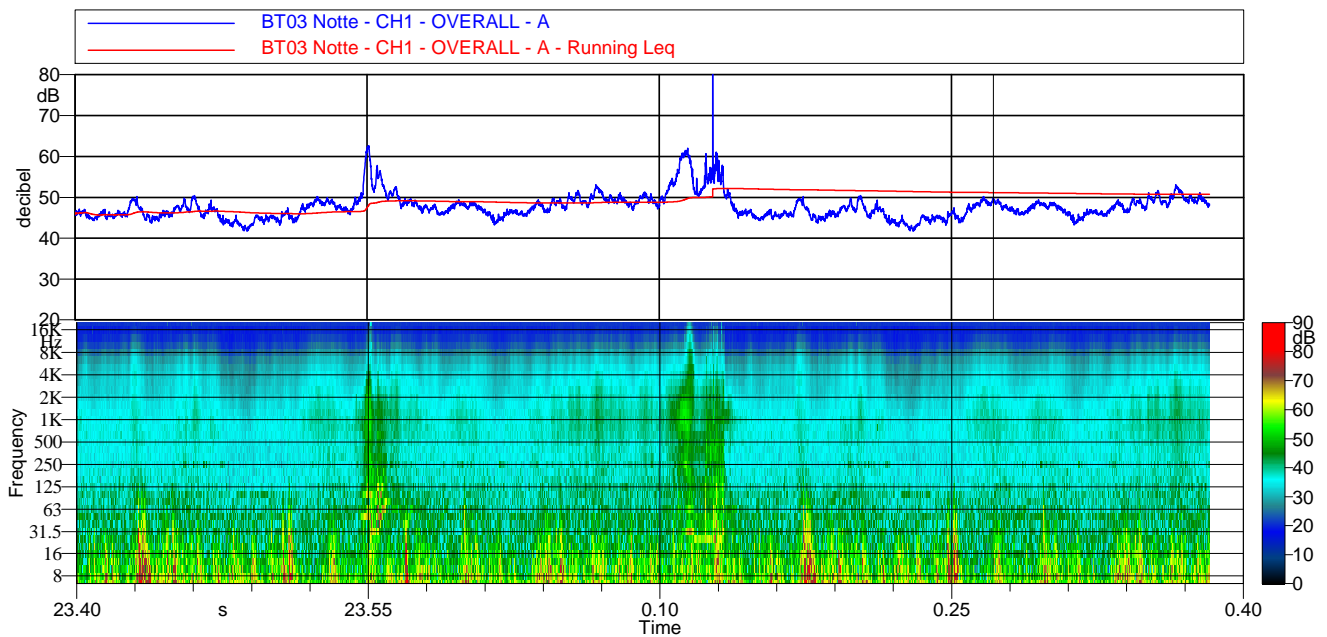
*L01:* 42.1 dBA    *L10:* 36.5 dBA

*L50:* 33.3 dBA    *L66:* 32.2 dBA

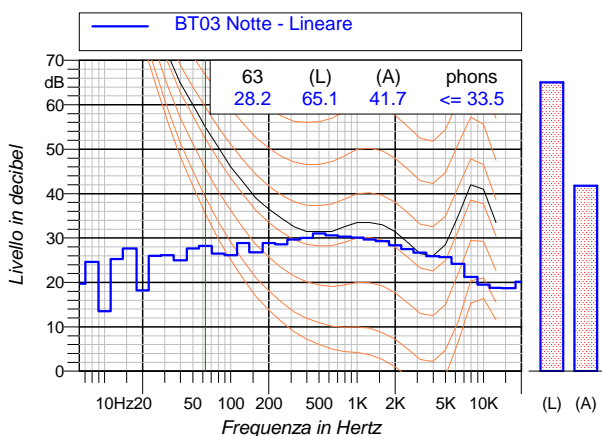
*L90:* 30.2 dBA    *L95:* 29.3 dBA



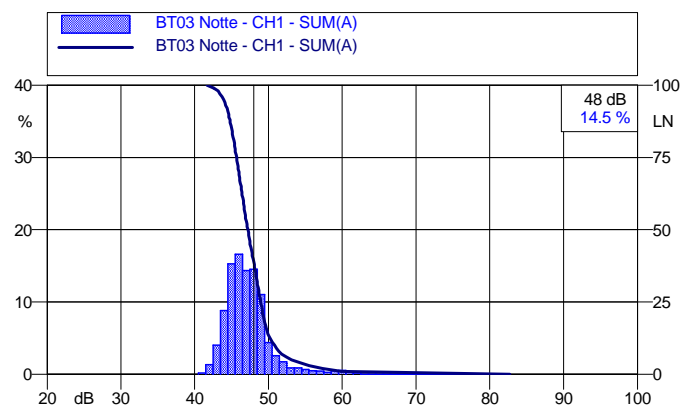
#### Andamento temporale dei livelli pesati A e dello spettro




#### Spettro dei minimi (per ricerca componenti tonali)



#### Curve cumulativa e distributiva dei livelli sonori



	<i>Customer/Committente</i> <b>Enel Green Power Solar Energy S.r.l.</b>		<i>Project Number/Numero Progetto</i>	
	<i>General Project/Progetto Generale</i> <b>Valutazione Rumore Ambientale</b>		<i>Activity/Attività effettuata</i> <b>Misure acustiche esterne</b>	
	<i>Date/Data:</i> 07-08/10/2020	<i>Revision/Revisione:</i> 01.00	<i>Location/Località:</i> Caltavuturo (PA)	
	<i>Project Manager/Responsabile Progetto:</i> SM			<i>Sheet/Pagina:</i> 11

### BT04 Mattino

#### Valori acustici principali

*Leq(A):* 55.3

*Lmin(A):* 42.9 dBA    *Lmax(A):* 71.8 dBA

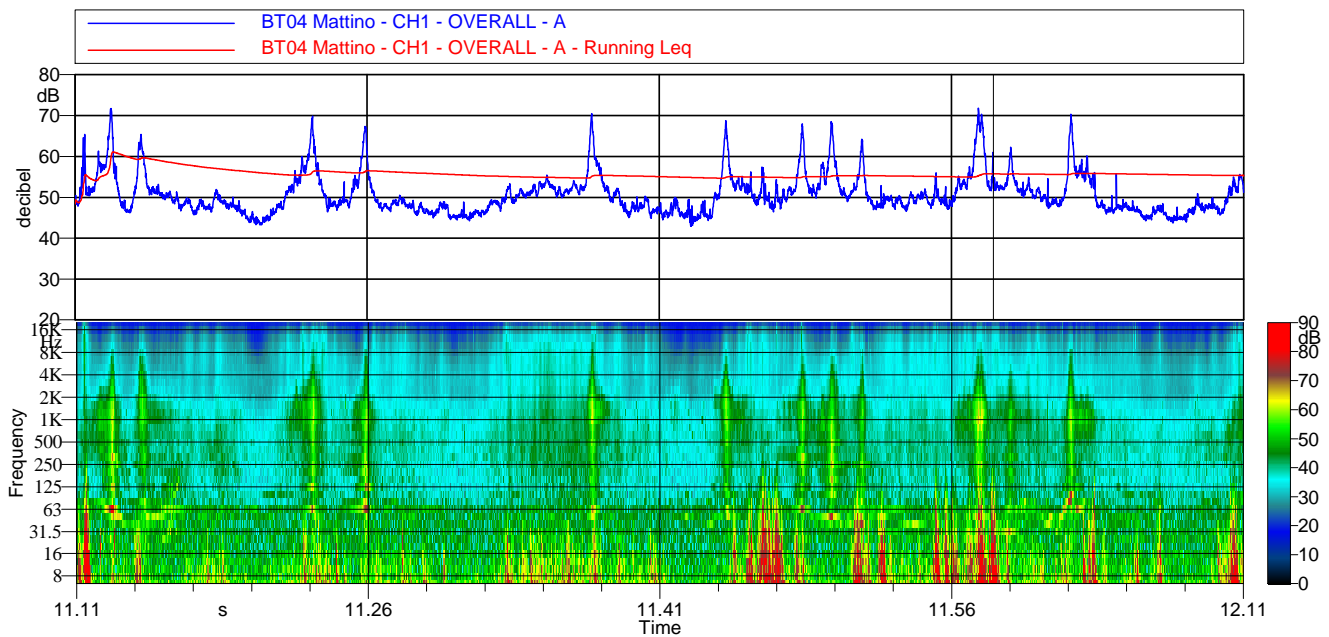
*L01:* 91.1 dBA    *L10:* 80.7 dBA

*L50:* 65.4 dBA    *L66:* 63.0 dBA

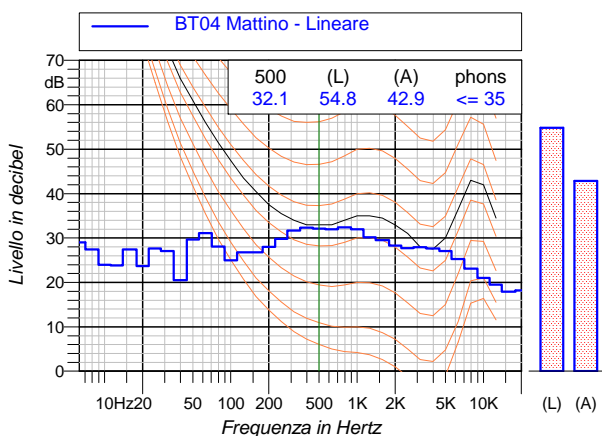
*L90:* 59.6 dBA    *L95:* 58.7 dBA



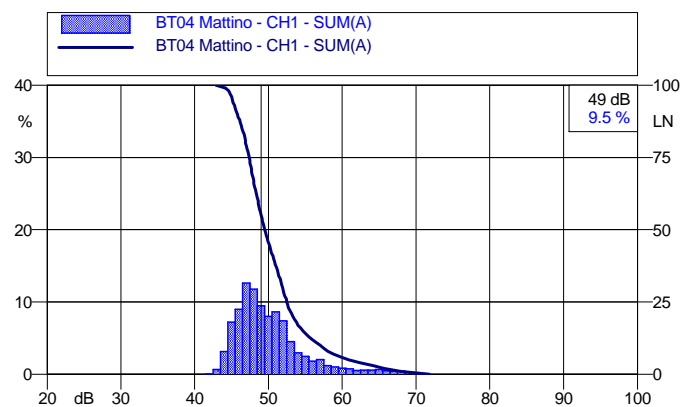
#### Andamento temporale dei livelli pesati A e dello spettro




#### Spettro dei minimi (per ricerca componenti tonali)



#### Curve cumulative e distributiva dei livelli sonori



	<i>Costumer/Committente</i> <b>Enel Green Power Solar Energy S.r.l.</b>		<i>Project Number/Numero Progetto</i>
	<i>General Project/Progetto Generale</i> <b>Valutazione Rumore Ambientale</b>		<i>Activity/Attività effettuata</i> <b>Misure acustiche esterne</b>
	<i>Date/Data:</i> 07-08/10/2020	<i>Revision/Revisione:</i> 01.00	<i>Location/Località:</i> Caltavuturo (PA)
	<i>Project Manager/Responsabile Progetto:</i> SM		<i>Sheet/Pagina:</i> 12

### BT04 Pomeriggio

#### Valori acustici principali

*Leq(A):* 55.8

*Lmin(A):* 43.3 dBA    *Lmax(A):* 71.8 dBA

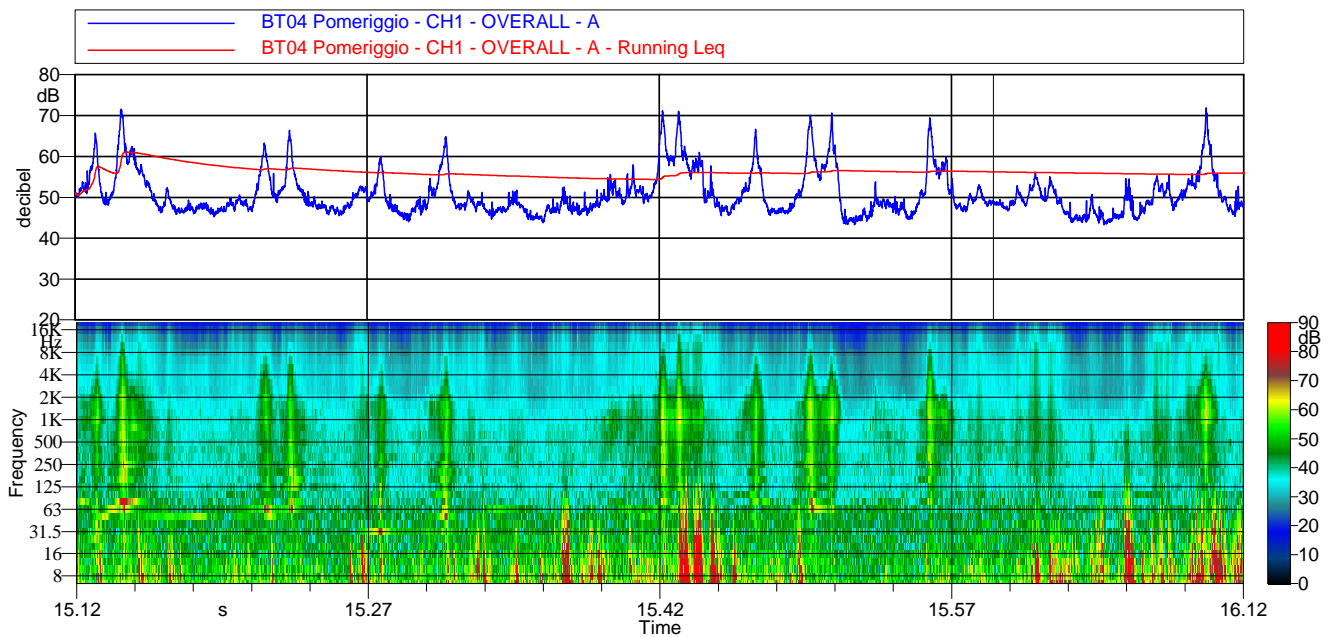
*L01:* 68.4 dBA    *L10:* 58.5 dBA

*L50:* 49.0 dBA    *L66:* 47.8 dBA

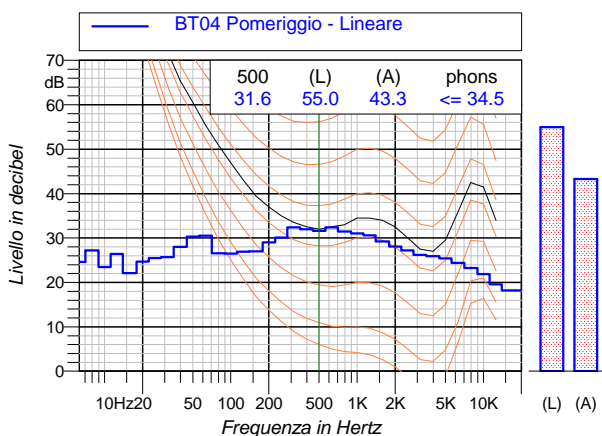
*L90:* 45.8 dBA    *L95:* 44.9 dBA



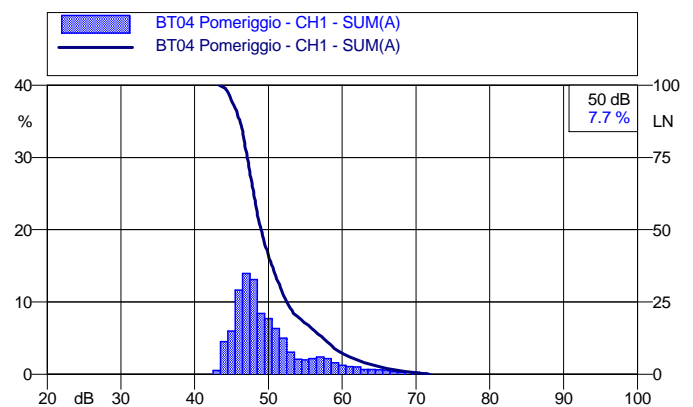
#### Andamento temporale dei livelli pesati A e dello spettro




#### Spettro dei minimi (per ricerca componenti tonali)



#### Curve cumulative e distributiva dei livelli sonori



	<i>Customer/Committente</i> <b>Enel Green Power Solar Energy S.r.l.</b>		<i>Project Number/Numero Progetto</i>	
	<i>General Project/Progetto Generale</i> <b>Valutazione Rumore Ambientale</b>		<i>Activity/Attività effettuata</i> <b>Misure acustiche esterne</b>	
	<i>Date/Data:</i> 07-08/10/2020	<i>Revision/Revisione:</i> 01.00	<i>Location/Località:</i> Caltavuturo (PA)	
	<i>Project Manager/Responsabile Progetto:</i> SM			<i>Sheet/Pagina:</i> 13

### BT04 Notte

#### Valori acustici principali

*Leq(A):* 49.8

*Lmin(A):* 43.1 dBA    *Lmax(A):* 65.2 dBA

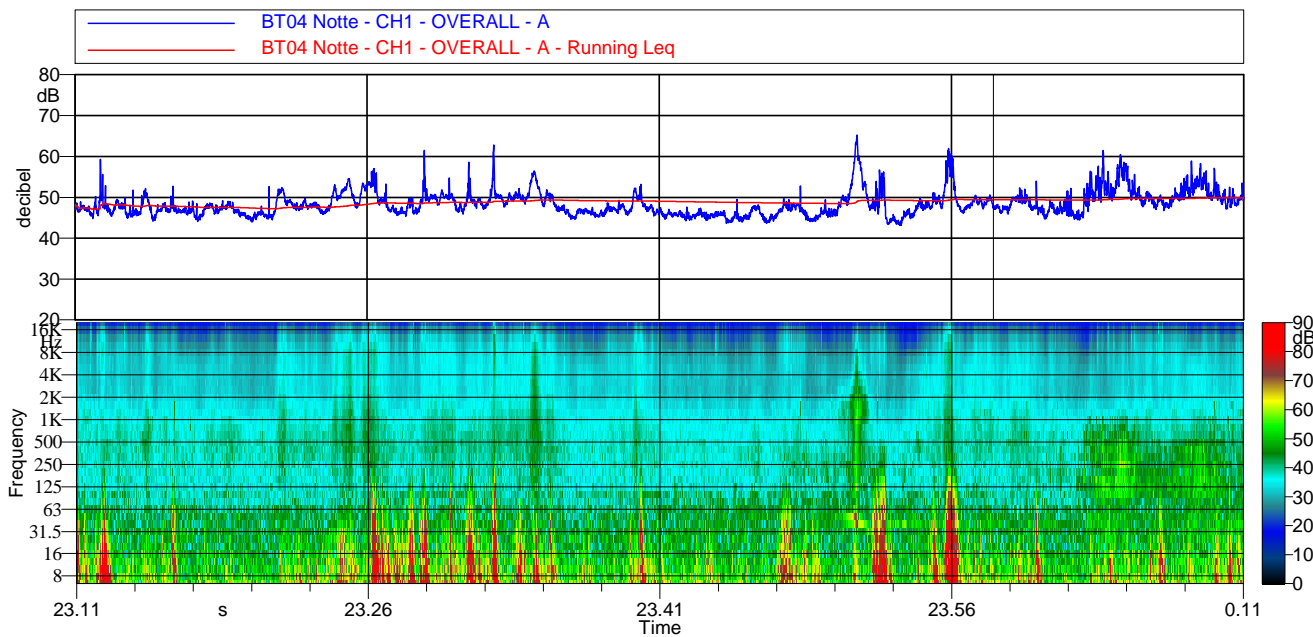
*L01:* 58.5 dBA    *L10:* 52.1 dBA

*L50:* 47.7 dBA    *L66:* 46.8 dBA

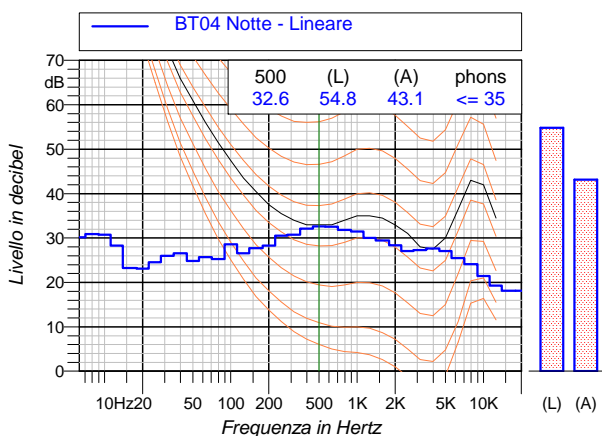
*L90:* 45.3 dBA    *L95:* 44.8 dBA



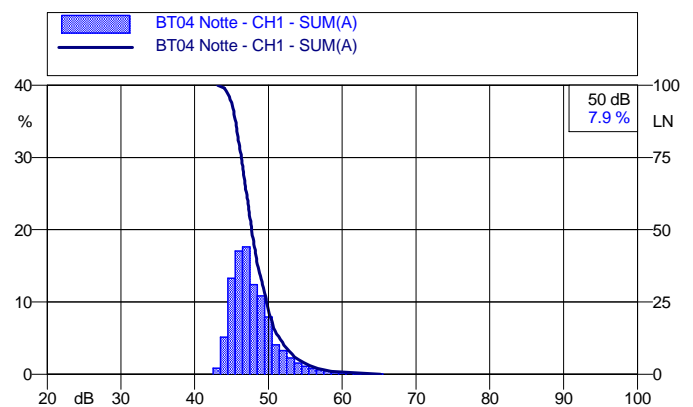
#### Andamento temporale dei livelli pesati A e dello spettro




#### Spettro dei minimi (per ricerca componenti tonali)



#### Curve cumulativa e distributiva dei livelli sonori



	<i>Customer/Committente</i> <b>Enel Green Power Solar Energy S.r.l.</b>		<i>Project Number/Numero Progetto</i>	
	<i>General Project/Progetto Generale</i> <b>Valutazione Rumore Ambientale</b>		<i>Activity/Attività effettuata</i> <b>Misure acustiche esterne</b>	
	<i>Date/Data:</i> 07-08/10/2020	<i>Revision/Revisione:</i> 01.00	<i>Location/Località:</i> Caltavuturo (PA)	
	<i>Project Manager/Responsabile Progetto:</i> SM			<i>Sheet/Pagina:</i> 14

### BT05 Mattino

#### Valori acustici principali

*Leq(A):* 68.6

*Lmin(A):* 44.7 dBA    *Lmax(A):* 104.3 dBA

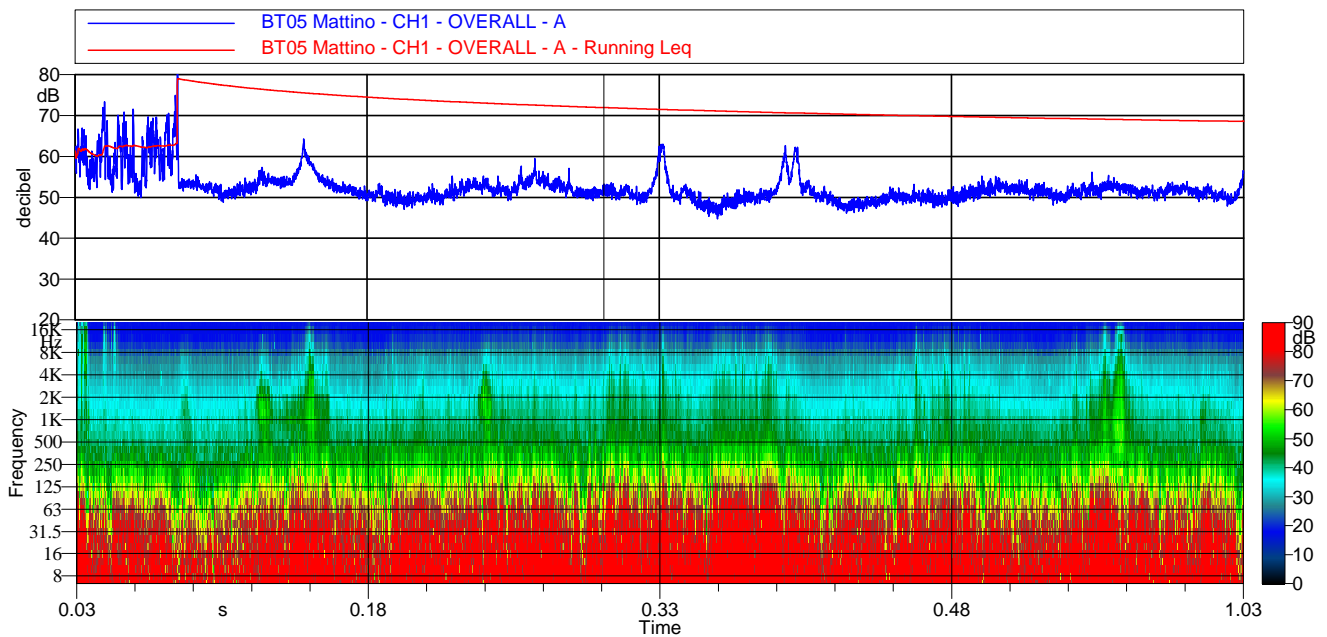
*L01:* 66.9 dBA    *L10:* 56.5 dBA

*L50:* 51.5 dBA    *L66:* 50.7 dBA

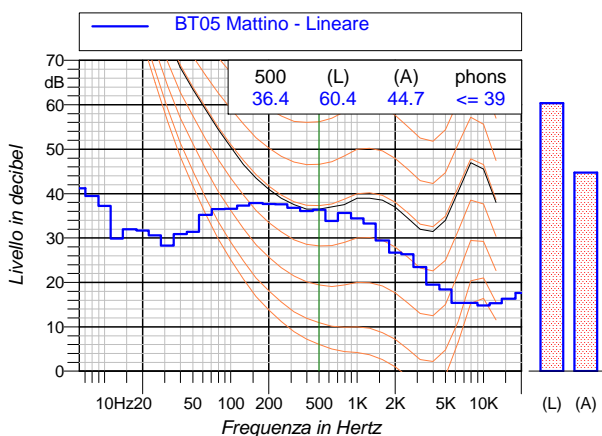
*L90:* 49.1 dBA    *L95:* 48.3 dBA



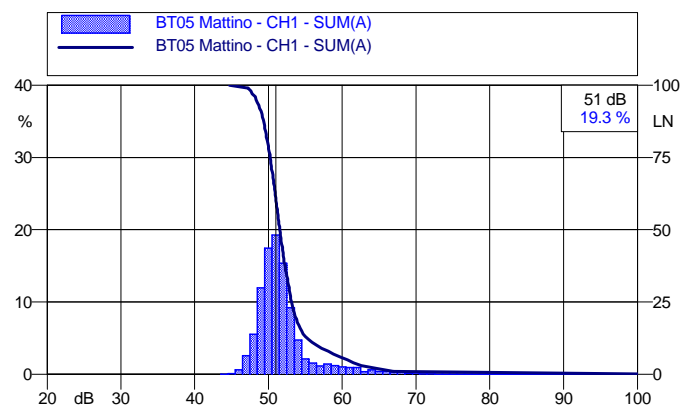
#### Andamento temporale dei livelli pesati A e dello spettro




#### Spettro dei minimi (per ricerca componenti tonali)



#### Curve cumulativa e distributiva dei livelli sonori



	<i>Customer/Committente</i> <b>Enel Green Power Solar Energy S.r.l.</b>		<i>Project Number/Numero Progetto</i>
	<i>General Project/Progetto Generale</i> <b>Valutazione Rumore Ambientale</b>		<i>Activity/Attività effettuata</i> <b>Misure acustiche esterne</b>
	<i>Date/Data:</i> 07-08/10/2020	<i>Revision/Revisione:</i> 01.00	<i>Location/Località:</i> Caltavuturo (PA)
	<i>Project Manager/Responsabile Progetto:</i> SM		<i>Sheet/Pagina:</i> 15

### BT05 Pomeriggio

#### Valori acustici principali

*Leq(A):* 60.8

*Lmin(A):* 46.2 dBA    *Lmax(A):* 74.1 dBA

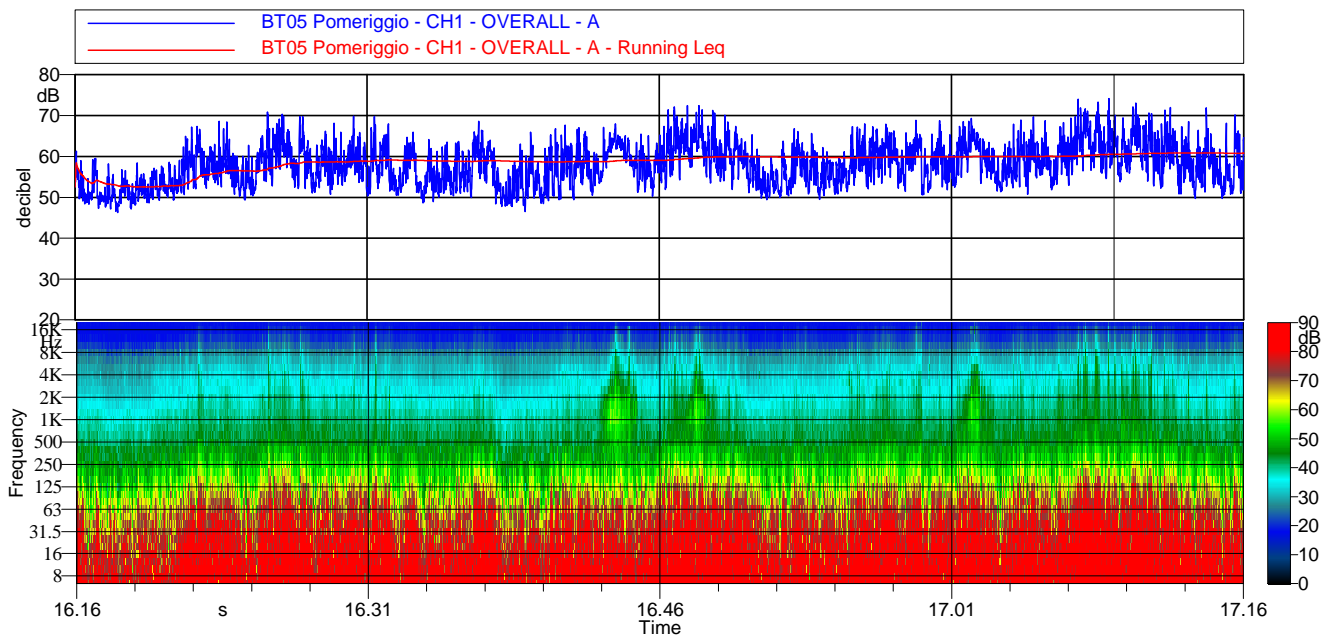
*L01:* 69.3 dBA    *L10:* 64.5 dBA

*L50:* 57.7 dBA    *L66:* 55.4 dBA

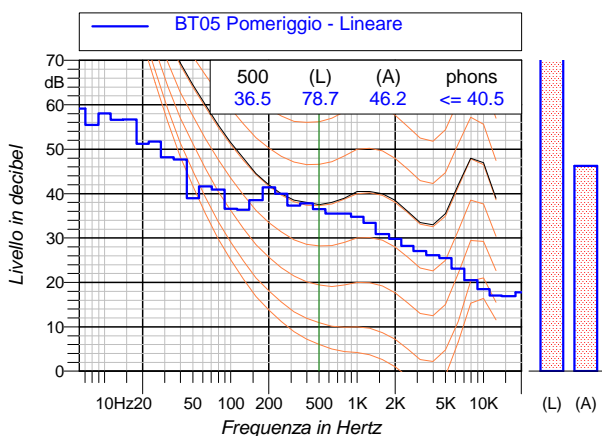
*L90:* 51.5 dBA    *L95:* 50.3 dBA



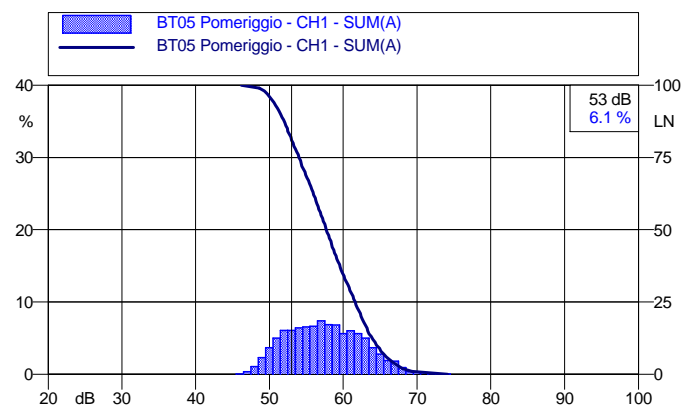
#### Andamento temporale dei livelli pesati A e dello spettro




#### Spettro dei minimi (per ricerca componenti tonali)



#### Curve cumulativa e distributiva dei livelli sonori



	<i>Customer/Committente</i> <b>Enel Green Power Solar Energy S.r.l.</b>		<i>Project Number/Numero Progetto</i>	
	<i>General Project/Progetto Generale</i> <b>Valutazione Rumore Ambientale</b>		<i>Activity/Attività effettuata</i> <b>Misure acustiche esterne</b>	
	<i>Date/Data:</i> 07-08/10/2020	<i>Revision/Revisione:</i> 01.00	<i>Location/Località:</i> Caltavuturo (PA)	
	<i>Project Manager/Responsabile Progetto:</i> SM			<i>Sheet/Pagina:</i> 16

### BT05 Notte

#### Valori acustici principali

*Leq(A):* 60.4

*Lmin(A):* 46.8 dBA    *Lmax(A):* 74.2 dBA

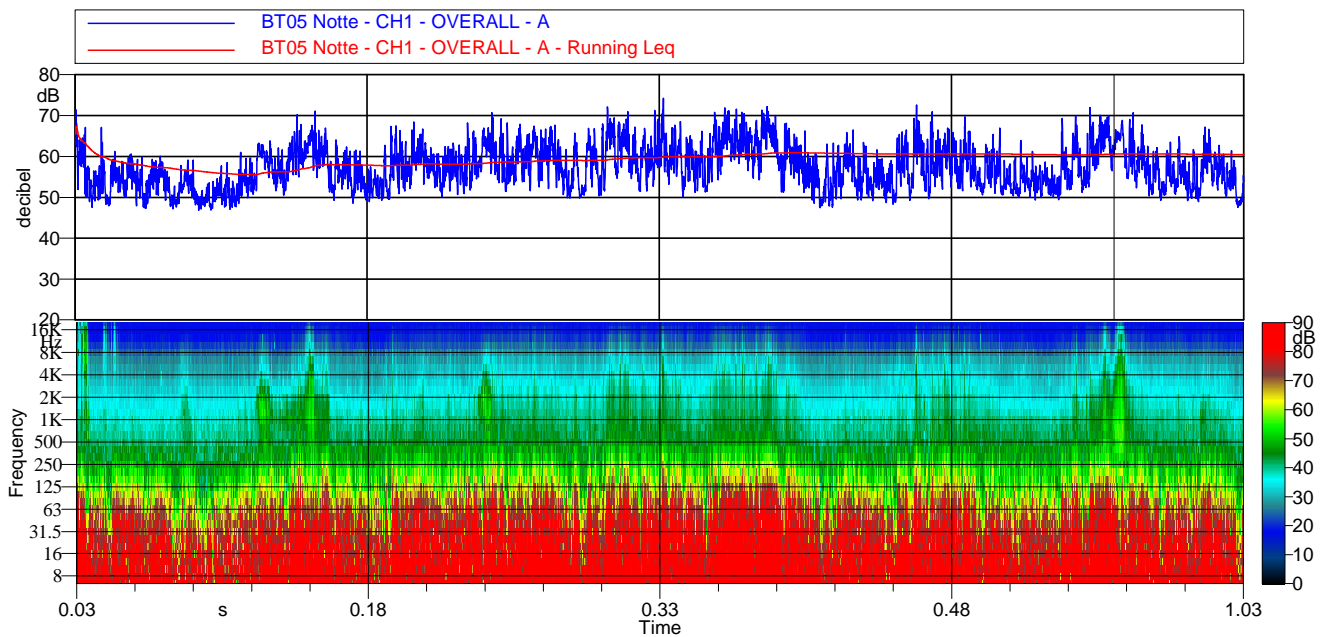
*L01:* 69.1 dBA    *L10:* 64.5 dBA

*L50:* 57.0 dBA    *L66:* 54.5 dBA

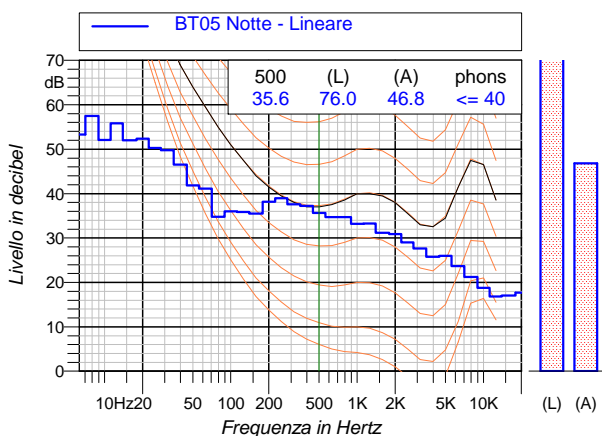
*L90:* 50.9 dBA    *L95:* 49.8 dBA



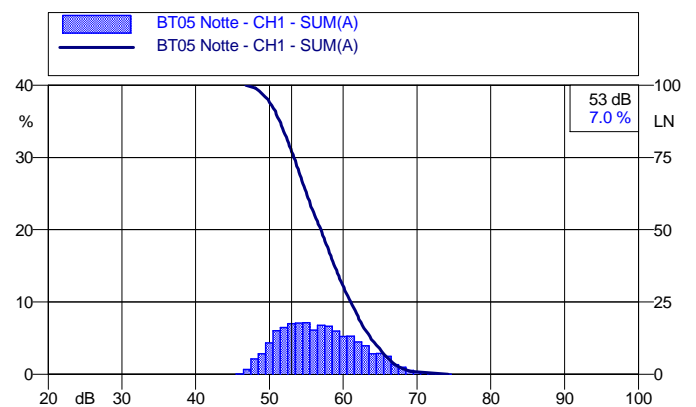
#### Andamento temporale dei livelli pesati A e dello spettro




#### Spettro dei minimi (per ricerca componenti tonali)



#### Curve cumulativa e distributiva dei livelli sonori





	<i>Customer/Committente</i> <b>Enel Green Power Solar Energy S.r.l.</b>		<i>Project Number/Numero Progetto</i>
	<i>General Project/Progetto Generale</i> <b>Valutazione Rumore Ambientale</b>		<i>Activity/Attività effettuata</i> <b>Misure acustiche esterne</b>
	<i>Date/Data:</i> 07-08/10/2020	<i>Revision/Revisione:</i> 01.00	<i>Location/Località:</i> Caltavuturo (PA)
	<i>Project Manager/Responsabile Progetto:</i> SM		<i>Sheet/Pagina:</i> 17

### BT06 Mattino

#### Valori acustici principali

*Leq(A):* 47.2

*Lmin(A):* 33.1 dBA    *Lmax(A):* 71.5 dBA

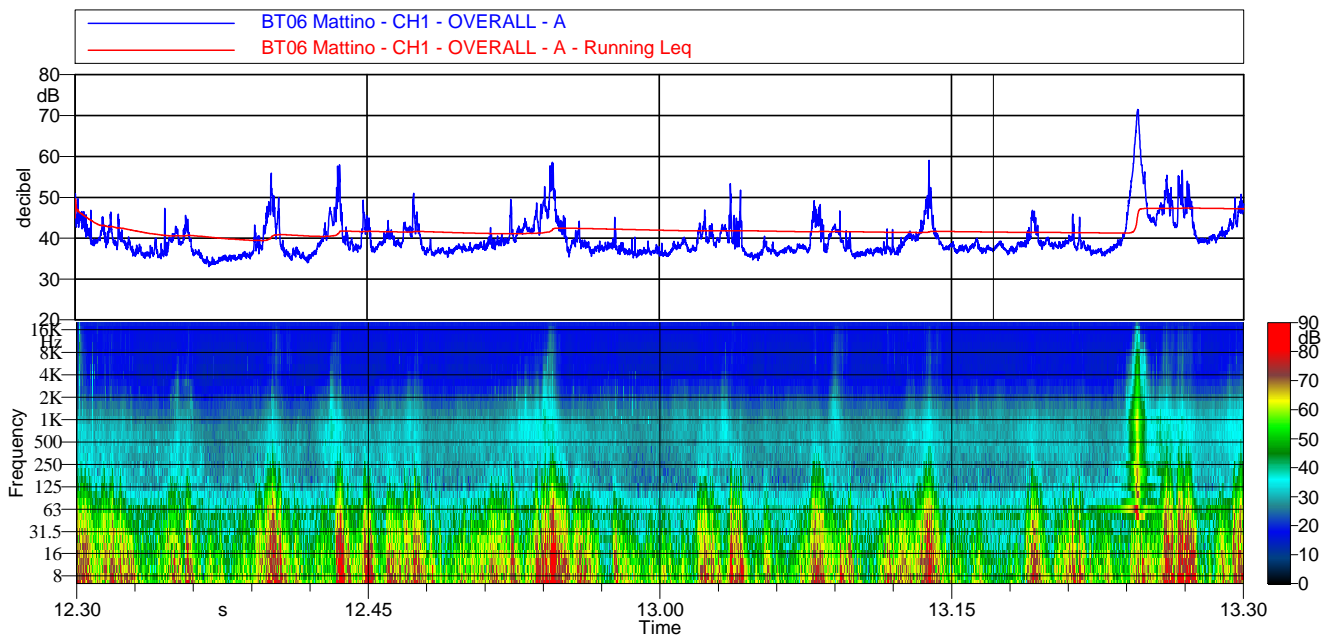
*L01:* 56.2 dBA    *L10:* 45.5 dBA

*L50:* 38.4 dBA    *L66:* 37.4 dBA

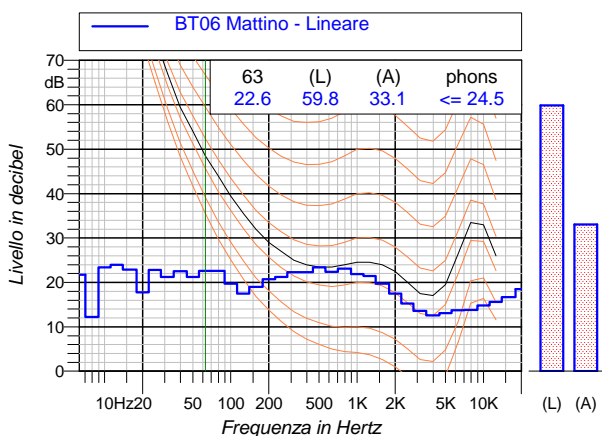
*L90:* 36.1 dBA    *L95:* 35.5 dBA



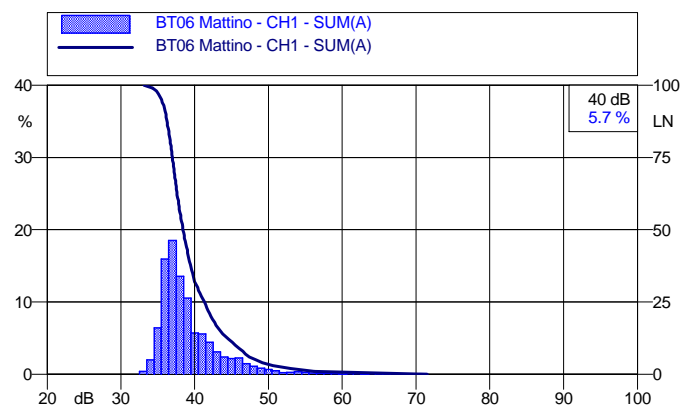
#### Andamento temporale dei livelli pesati A e dello spettro




#### Spettro dei minimi (per ricerca componenti tonali)



#### Curve cumulative e distributiva dei livelli sonori



	<i>Customer/Committente</i> <b>Enel Green Power Solar Energy S.r.l.</b>		<i>Project Number/Numero Progetto</i>
	<i>General Project/Progetto Generale</i> <b>Valutazione Rumore Ambientale</b>		<i>Activity/Attività effettuata</i> <b>Misure acustiche esterne</b>
	<i>Date/Data:</i> 07-08/10/2020	<i>Revision/Revisione:</i> 01.00	<i>Location/Località:</i> Caltavuturo (PA)
	<i>Project Manager/Responsabile Progetto:</i> SM		<i>Sheet/Pagina:</i> 18

### BT06 Pomeriggio

#### Valori acustici principali

*Leq(A):* 49.2

*Lmin(A):* 35.8 dBA    *Lmax(A):* 70.6 dBA

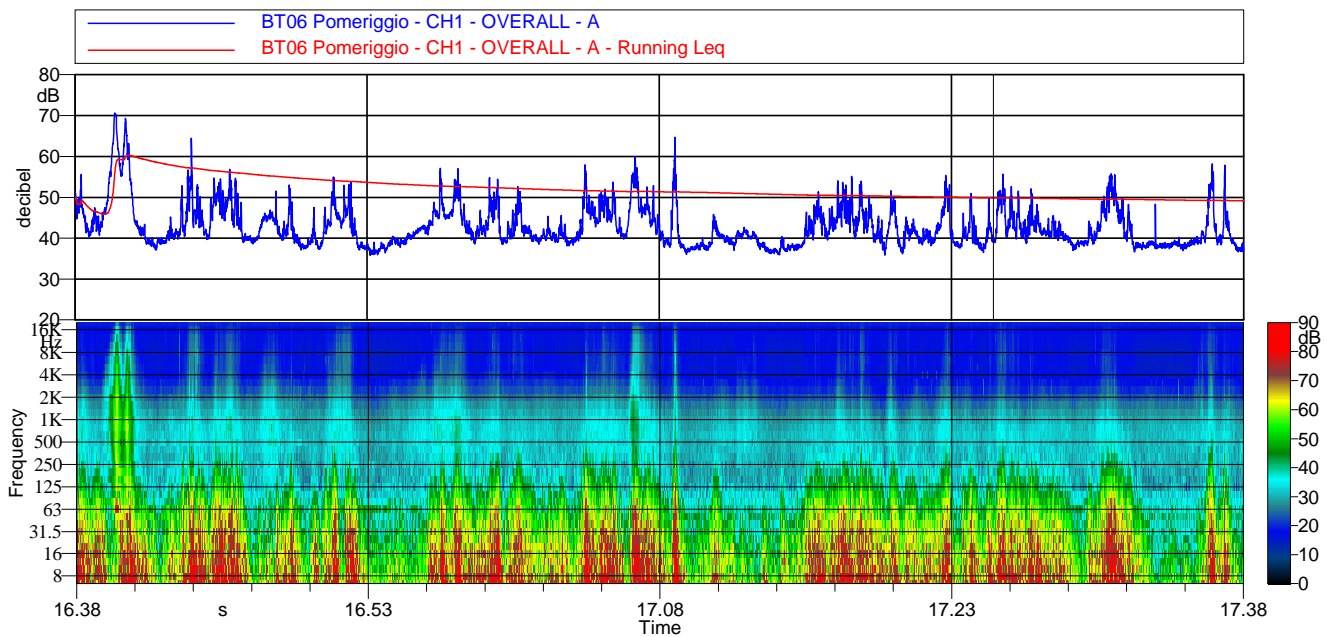
*L01:* 60.8 dBA    *L10:* 49.5 dBA

*L50:* 41.4 dBA    *L66:* 39.9 dBA

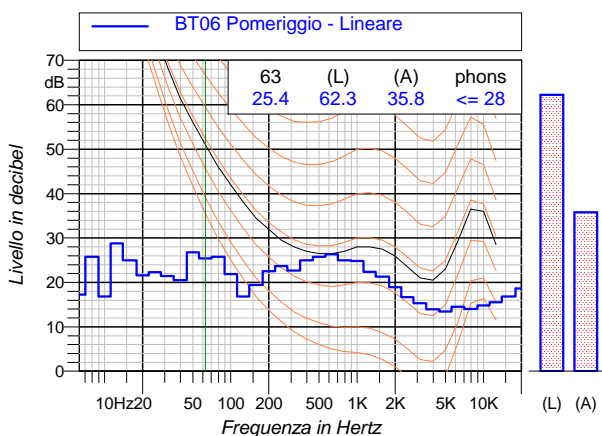
*L90:* 37.9 dBA    *L95:* 37.4 dBA



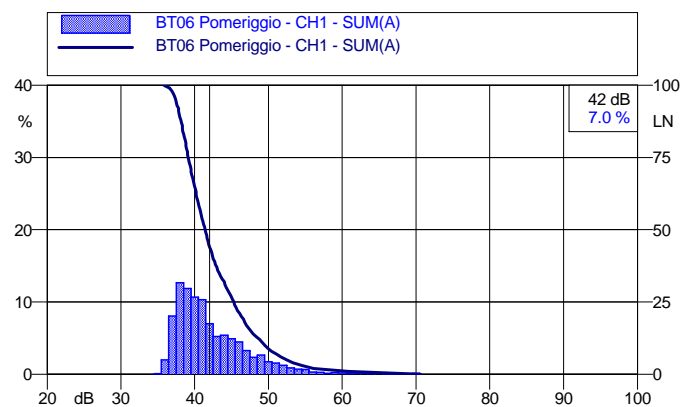
#### Andamento temporale dei livelli pesati A e dello spettro




#### Spettro dei minimi (per ricerca componenti tonali)



#### Curve cumulative e distributiva dei livelli sonori



	<i>Customer/Committente</i> <b>Enel Green Power Solar Energy S.r.l.</b>		<i>Project Number/Numero Progetto</i>
	<i>General Project/Progetto Generale</i> <b>Valutazione Rumore Ambientale</b>		<i>Activity/Attività effettuata</i> <b>Misure acustiche esterne</b>
	<i>Date/Data:</i> 07-08/10/2020	<i>Revision/Revisione:</i> 01.00	<i>Location/Località:</i> Caltavuturo (PA)
	<i>Project Manager/Responsabile Progetto:</i> SM		<i>Sheet/Pagina:</i> 19

### BT06 Notte

#### Valori acustici principali

*Leq(A):* 43.0

*Lmin(A):* 33.7 dBA    *Lmax(A):* 62.6 dBA

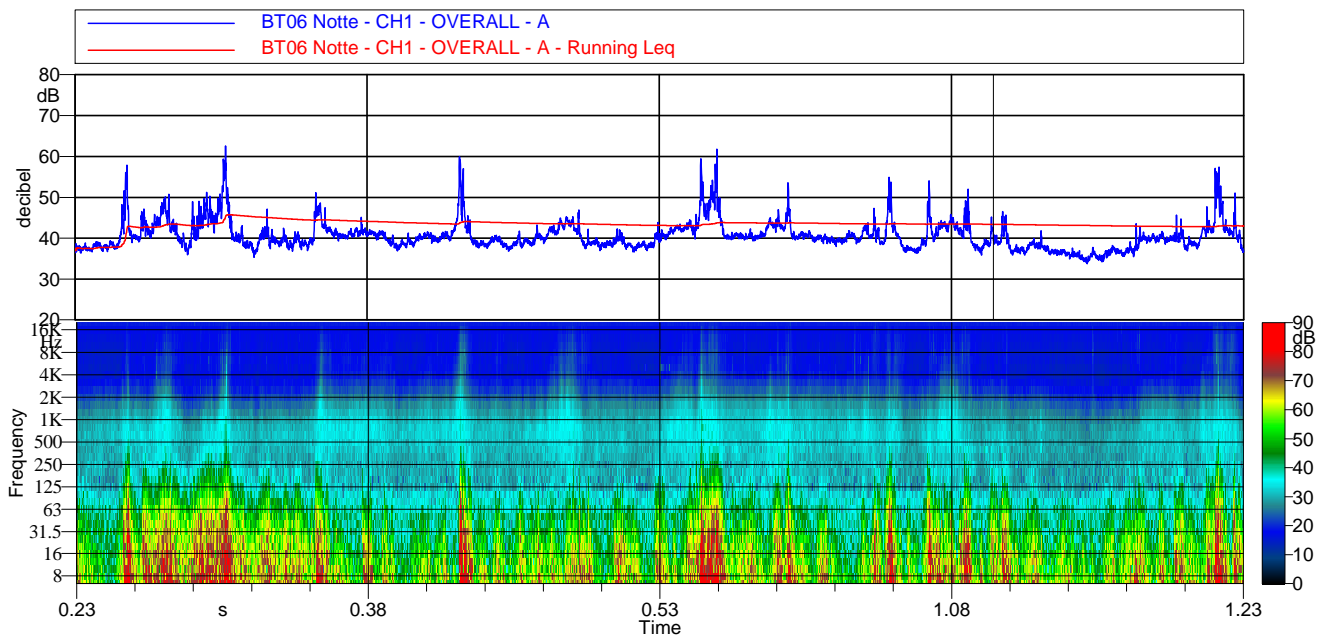
*L01:* 53.5 dBA    *L10:* 44.5 dBA

*L50:* 40.0 dBA    *L66:* 39.0 dBA

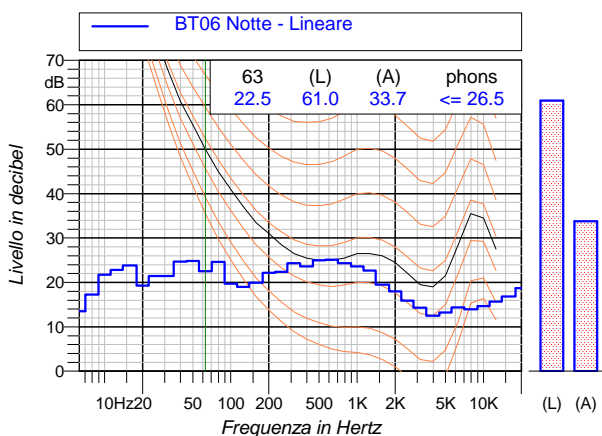
*L90:* 37.1 dBA    *L95:* 36.4 dBA



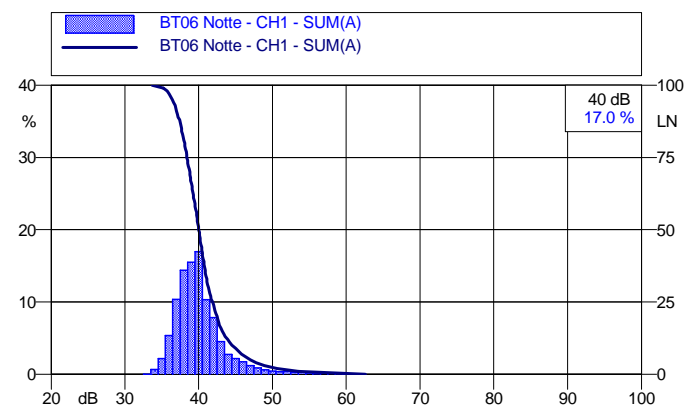
#### Andamento temporale dei livelli pesati A e dello spettro




#### Spettro dei minimi (per ricerca componenti tonali)



#### Curve cumulativa e distributiva dei livelli sonori



	<i>Customer/Committente</i> <b>Enel Green Power Solar Energy S.r.l.</b>		<i>Project Number/Numero Progetto</i>	
	<i>General Project/Progetto Generale</i> <b>Valutazione Rumore Ambientale</b>		<i>Activity/Attività effettuata</i> <b>Misure acustiche esterne</b>	
	<i>Date/Data:</i> 07-08/10/2020	<i>Revision/Revisione:</i> 01.00	<i>Location/Località:</i> Caltavuturo (PA)	
	<i>Project Manager/Responsabile Progetto:</i> SM		<i>Sheet/Pagina:</i> 20	

### BT07 Mattino

#### Valori acustici principali

*Leq(A):* 48.0

*Lmin(A):* 34.9 dBA    *Lmax(A):* 77.2 dBA

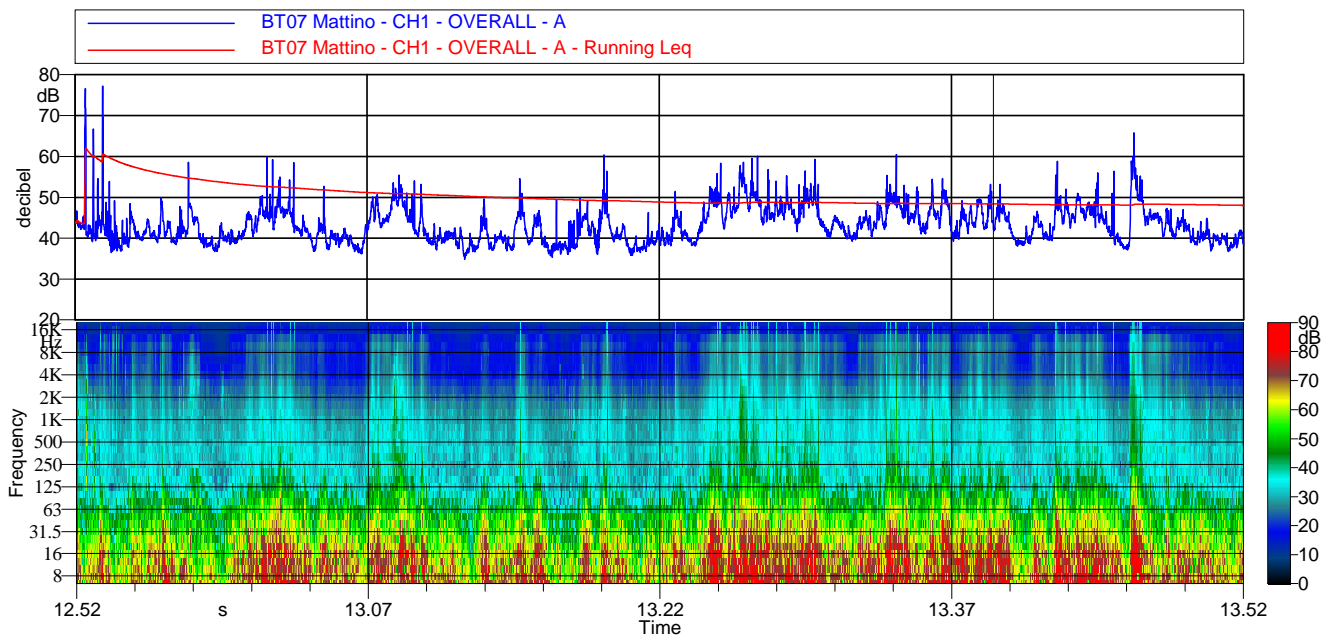
*L01:* 55.1 dBA    *L10:* 48.8 dBA

*L50:* 42.6 dBA    *L66:* 40.7 dBA

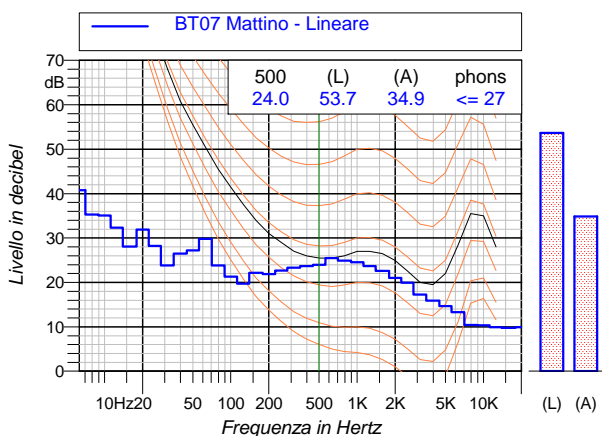
*L90:* 38.3 dBA    *L95:* 37.5 dBA



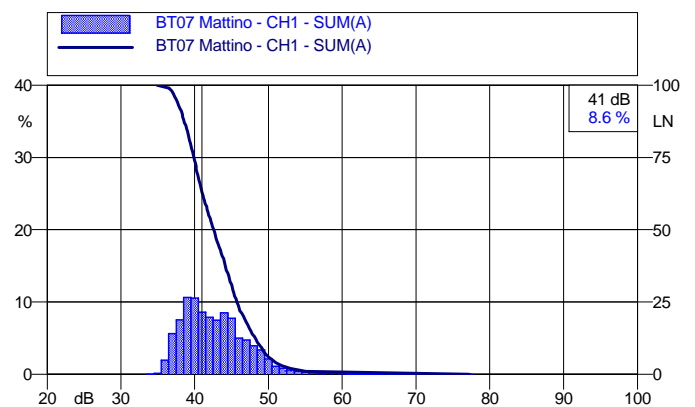
#### Andamento temporale dei livelli pesati A e dello spettro




#### Spettro dei minimi (per ricerca componenti tonali)



#### Curve cumulative e distributiva dei livelli sonori



	<i>Customer/Committente</i> <b>Enel Green Power Solar Energy S.r.l.</b>		<i>Project Number/Numero Progetto</i>
	<i>General Project/Progetto Generale</i> <b>Valutazione Rumore Ambientale</b>		<i>Activity/Attività effettuata</i> <b>Misure acustiche esterne</b>
	<i>Date/Data:</i> 07-08/10/2020	<i>Revision/Revisione:</i> 01.00	<i>Location/Località:</i> Caltavuturo (PA)
	<i>Project Manager/Responsabile Progetto:</i> SM		<i>Sheet/Pagina:</i> 21

### BT07 Pomeriggio

#### Valori acustici principali

*Leq(A):* 55.5

*Lmin(A):* 35.6 dBA    *Lmax(A):* 76.0 dBA

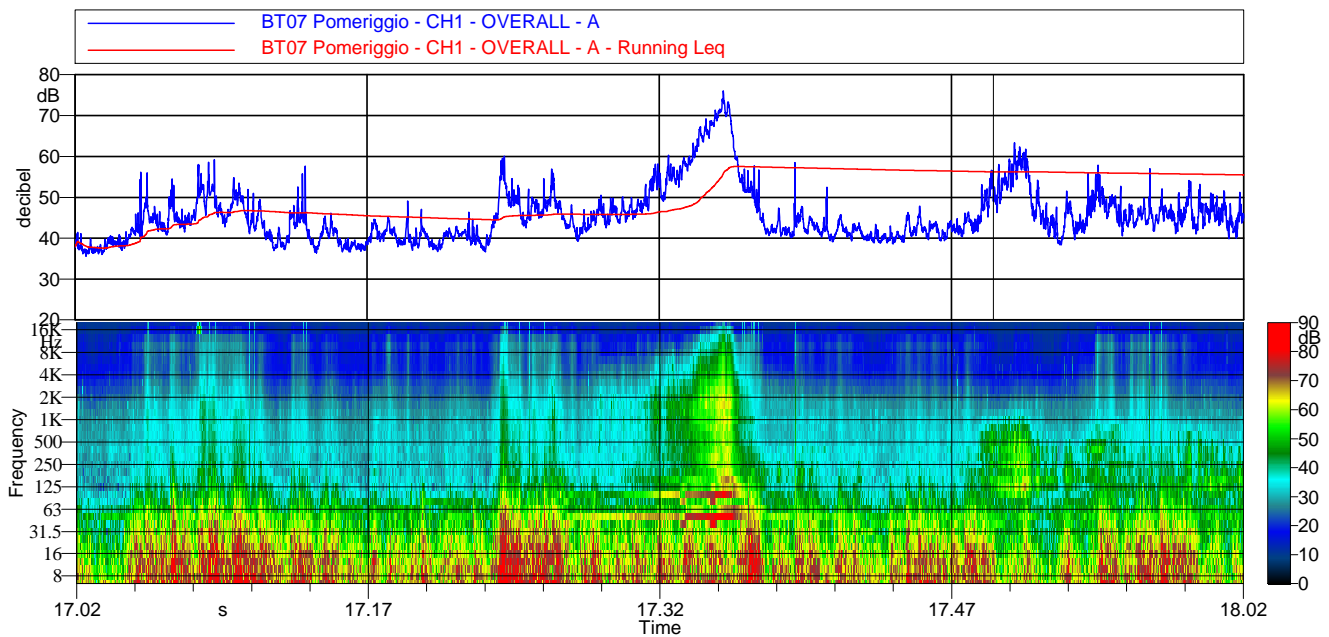
*L01:* 70.4 dBA    *L10:* 54.1 dBA

*L50:* 44.0 dBA    *L66:* 42.0 dBA

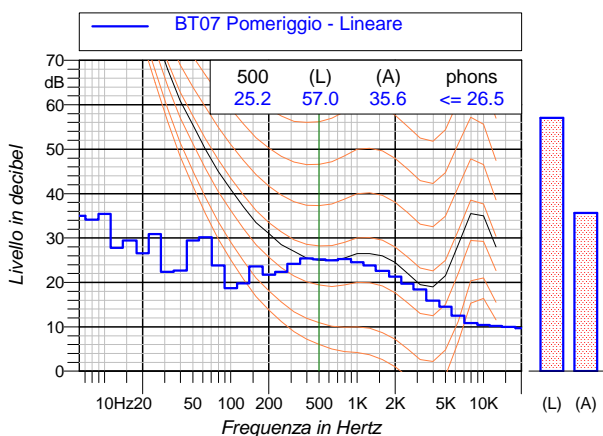
*L90:* 38.9 dBA    *L95:* 38.0 dBA



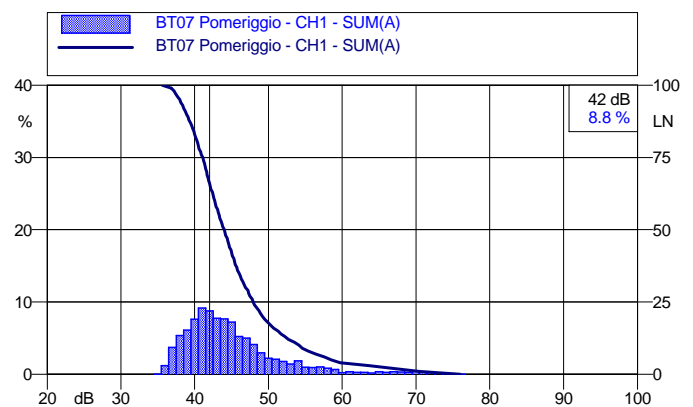
#### Andamento temporale dei livelli pesati A e dello spettro




#### Spettro dei minimi (per ricerca componenti tonali)



#### Curve cumulative e distributiva dei livelli sonori



	<i>Customer/Committente</i> <b>Enel Green Power Solar Energy S.r.l.</b>		<i>Project Number/Numero Progetto</i>
	<i>General Project/Progetto Generale</i> <b>Valutazione Rumore Ambientale</b>		<i>Activity/Attività effettuata</i> <b>Misure acustiche esterne</b>
	<i>Date/Data:</i> 07-08/10/2020	<i>Revision/Revisione:</i> 01.00	<i>Location/Località:</i> Caltavuturo (PA)
	<i>Project Manager/Responsabile Progetto:</i> SM		<i>Sheet/Pagina:</i> 22

### BT07 Notte

#### Valori acustici principali

*Leq(A):* 46.2

*Lmin(A):* 35.1 dBA    *Lmax(A):* 61.8 dBA

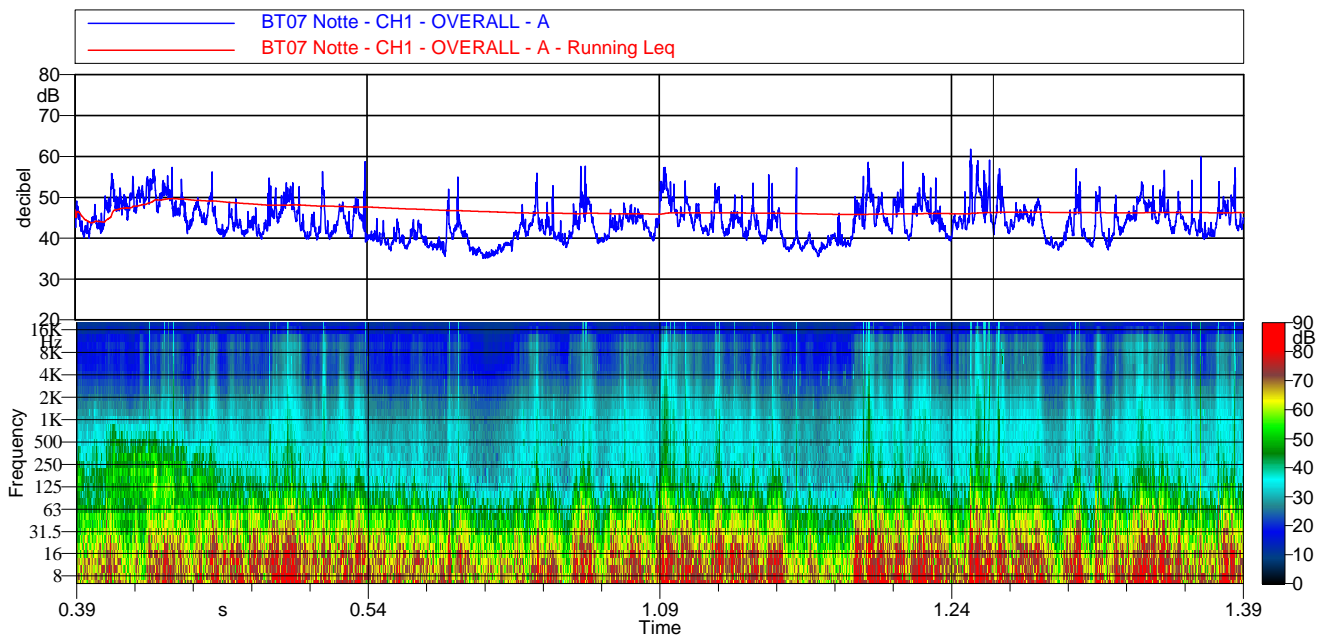
*L01:* 54.9 dBA    *L10:* 49.6 dBA

*L50:* 43.5 dBA    *L66:* 41.8 dBA

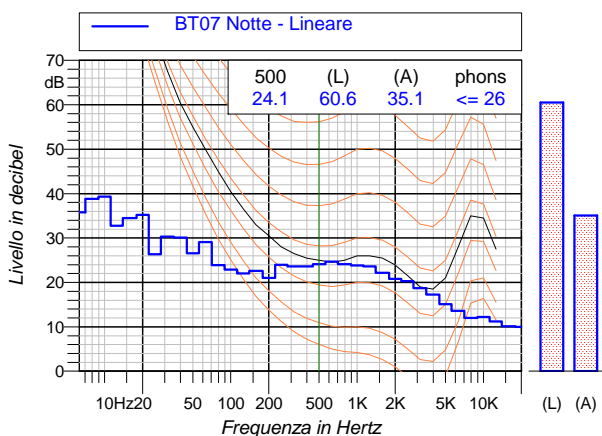
*L90:* 38.6 dBA    *L95:* 37.7 dBA



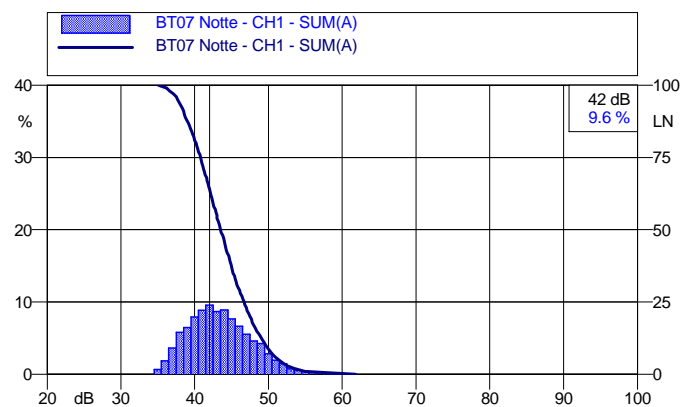
#### Andamento temporale dei livelli pesati A e dello spettro




#### Spettro dei minimi (per ricerca componenti tonali)



#### Curve cumulativa e distributiva dei livelli sonori



	<i>Customer/Committente</i> <b>Enel Green Power Solar Energy S.r.l.</b>		<i>Project Number/Numero Progetto</i>
	<i>General Project/Progetto Generale</i> <b>Valutazione Rumore Ambientale</b>		<i>Activity/Attività effettuata</i> <b>Misure acustiche esterne</b>
	<i>Date/Data:</i> 07-08/10/2020	<i>Revision/Revisione:</i> 01.00	<i>Location/Località:</i> Caltavuturo (PA)
	<i>Project Manager/Responsabile Progetto:</i> SM		<i>Sheet/Pagina:</i> 23

### BT08 Mattino

#### Valori acustici principali

*Leq(A):* 55.3

*Lmin(A):* 41.1 dBA    *Lmax(A):* 81.0 dBA

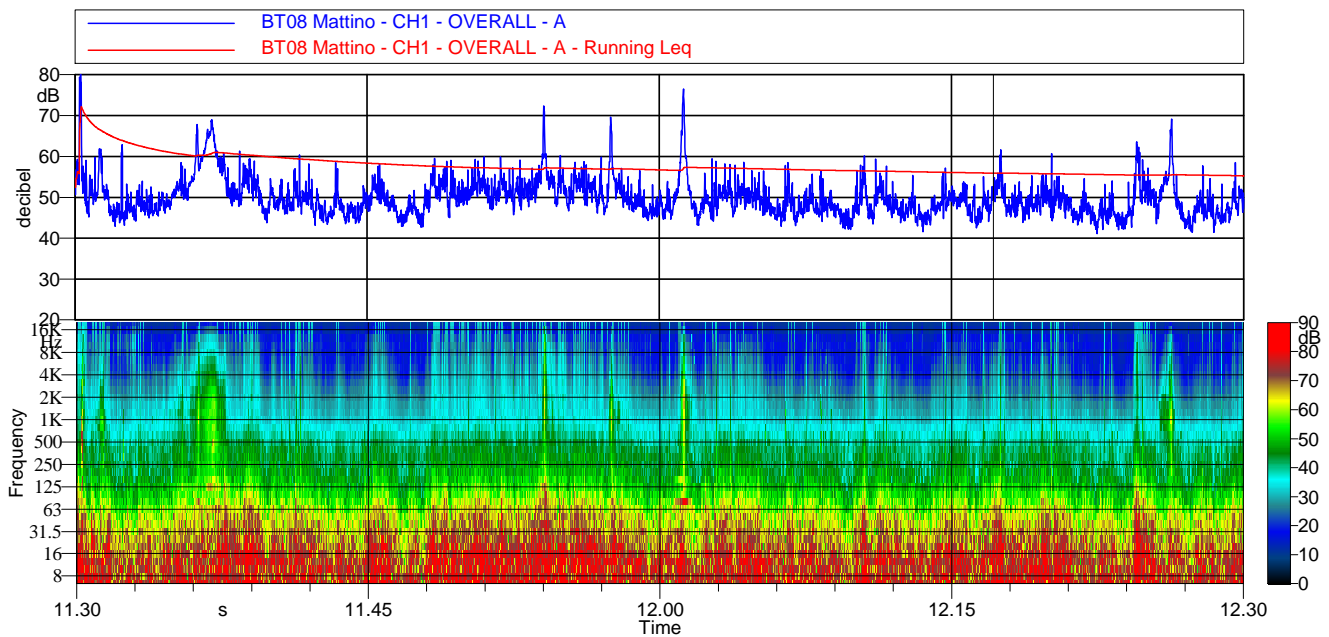
*L01:* 66.3 dBA    *L10:* 54.8 dBA

*L50:* 49.1 dBA    *L66:* 47.6 dBA

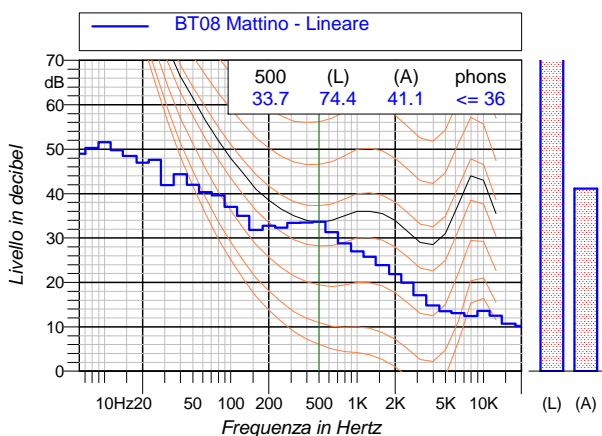
*L90:* 45.2 dBA    *L95:* 44.3 dBA



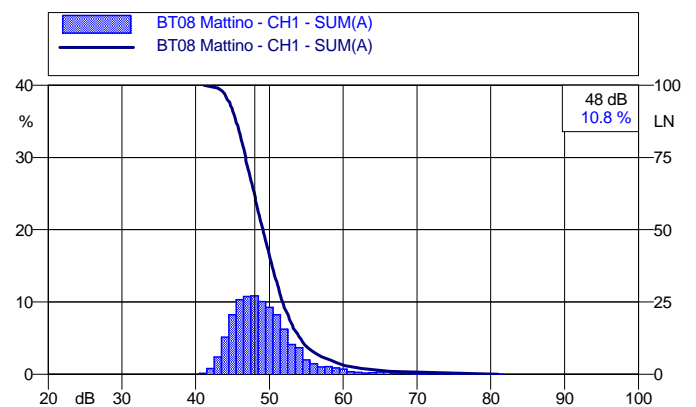
#### Andamento temporale dei livelli pesati A e dello spettro




#### Spettro dei minimi (per ricerca componenti tonali)



#### Curve cumulative e distributiva dei livelli sonori



	<i>Costumer/Committente</i> <b>Enel Green Power Solar Energy S.r.l.</b>		<i>Project Number/Numero Progetto</i>	
	<i>General Project/Progetto Generale</i> <b>Valutazione Rumore Ambientale</b>		<i>Activity/Attività effettuata</i> <b>Misure acustiche esterne</b>	
	<i>Date/Data:</i> 07-08/10/2020	<i>Revision/Revisione:</i> 01.00	<i>Location/Località:</i> Caltavuturo (PA)	
	<i>Project Manager/Responsabile Progetto:</i> SM		<i>Sheet/Pagina:</i> 24	

### BT08 Pomeriggio

#### Valori acustici principali

*Leq(A):* 53.4

*Lmin(A):* 41.6 dBA    *Lmax(A):* 72.1 dBA

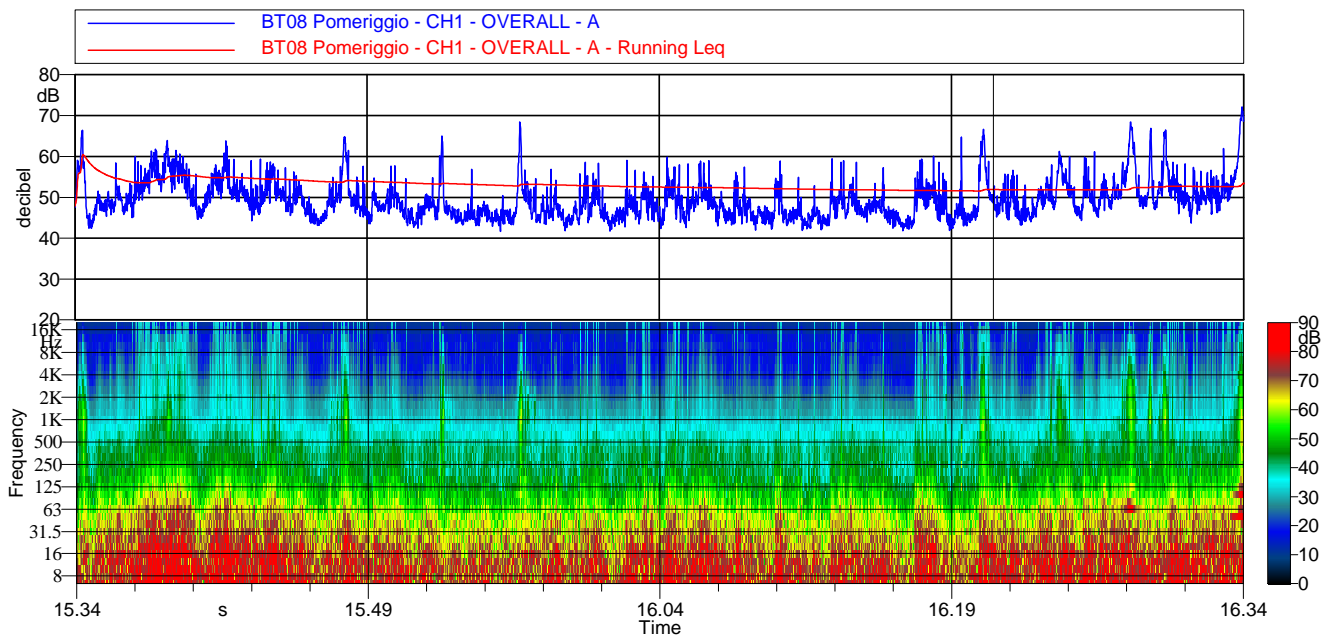
*L01:* 65.3 dBA    *L10:* 55.3 dBA

*L50:* 48.4 dBA    *L66:* 46.8 dBA

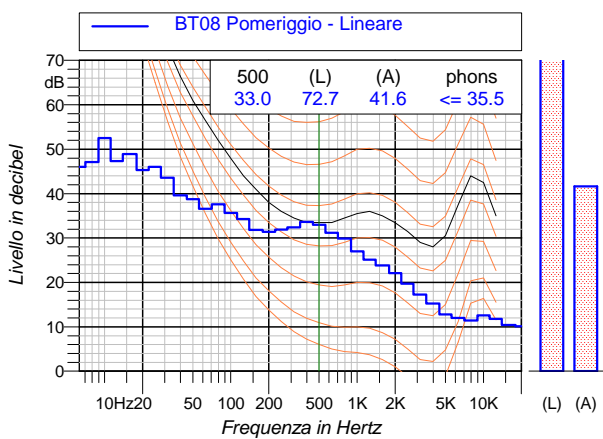
*L90:* 44.5 dBA    *L95:* 43.7 dBA



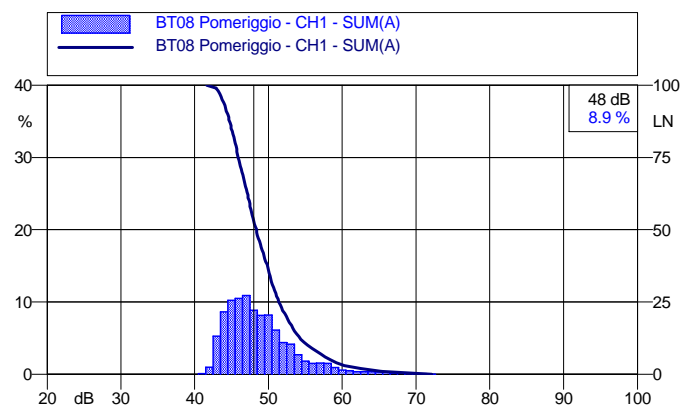
#### Andamento temporale dei livelli pesati A e dello spettro




#### Spettro dei minimi (per ricerca componenti tonali)



#### Curve cumulativa e distributiva dei livelli sonori





	<i>Customer/Committente</i> <b>Enel Green Power Solar Energy S.r.l.</b>		<i>Project Number/Numero Progetto</i>
	<i>General Project/Progetto Generale</i> <b>Valutazione Rumore Ambientale</b>		<i>Activity/Attività effettuata</i> <b>Misure acustiche esterne</b>
	<i>Date/Data:</i> 07-08/10/2020	<i>Revision/Revisione:</i> 01.00	<i>Location/Località:</i> Caltavuturo (PA)
	<i>Project Manager/Responsabile Progetto:</i> SM		<i>Sheet/Pagina:</i> 25

### BT08 Notte

#### Valori acustici principali

*Leq(A):* 51.4

*Lmin(A):* 41.7 dBA    *Lmax(A):* 68.2 dBA

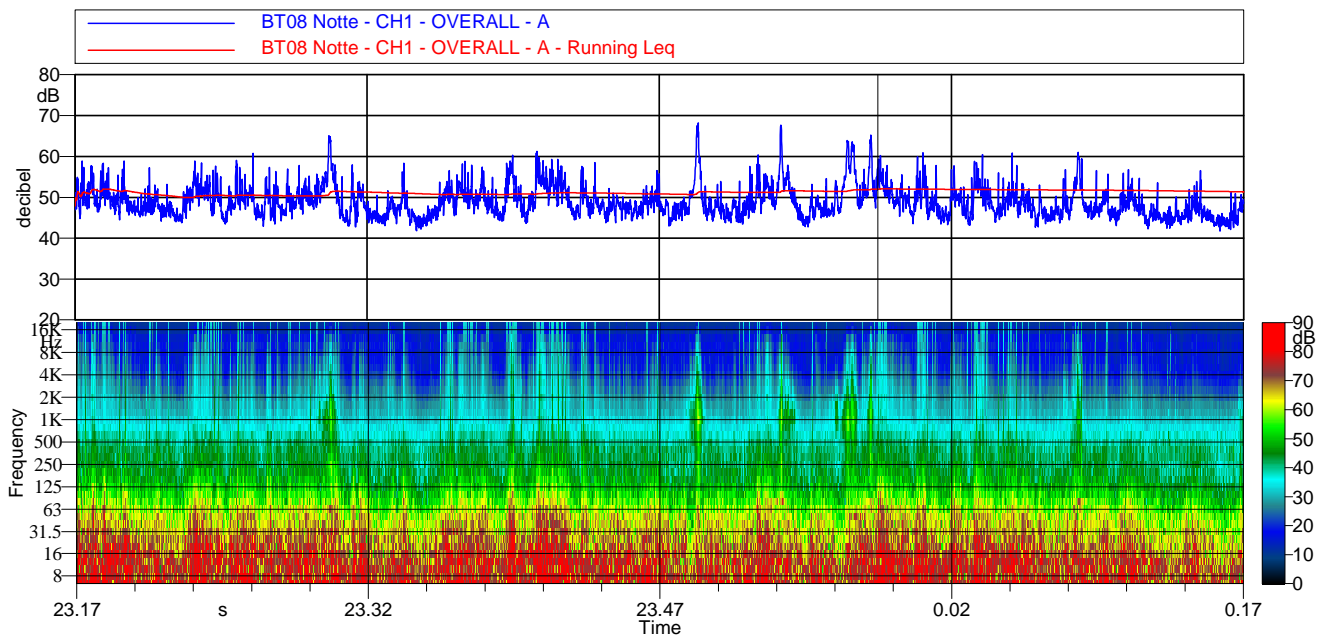
*L01:* 62.2 dBA    *L10:* 53.6 dBA

*L50:* 48.1 dBA    *L66:* 46.9 dBA

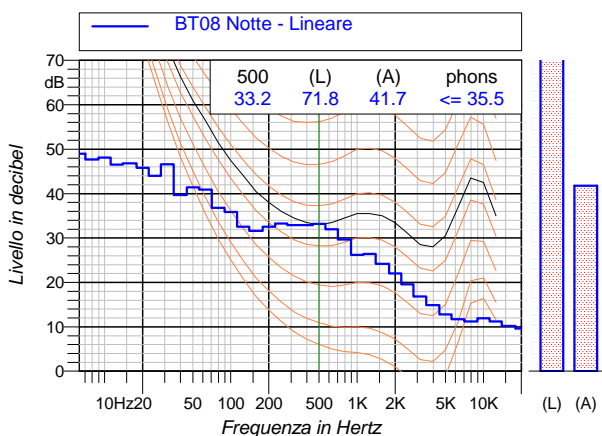
*L90:* 44.8 dBA    *L95:* 44.2 dBA



#### Andamento temporale dei livelli pesati A e dello spettro



#### Spettro dei minimi (per ricerca componenti tonali)



#### Curve cumulativa e distributiva dei livelli sonori

