

Legenda

- SSE
- SE RTN
- Area condivisa
- Area stallo EGP
- Area stallo altro produttore
- API
- Cavidotto AT 150kV

| | | | | | |
|------|----------|-------------------------|----------|---------|----------|
| 02 | MAR/23 | MODIFICA ALLA SE RTN | Sesano | Gagorio | |
| 01 | NOV/22 | REVISIONE DOPO COMMENTI | Sesano | Gagorio | Iacifano |
| 00 | SET/2022 | EMISSIONE | Sesano | Gagorio | Iacifano |
| REV. | DATE | DESCRIPTION | PREPARED | CHECKED | APPROVED |

PROJECT: **CALTAVUTURO ESTENSIONE**

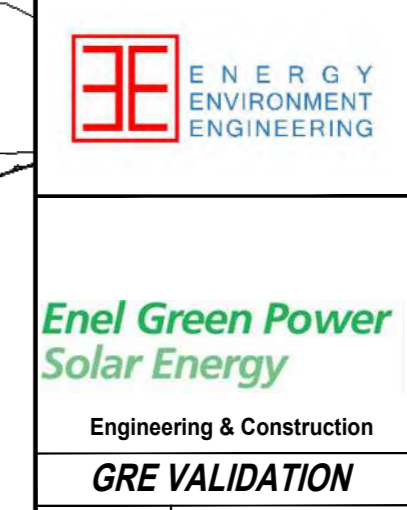
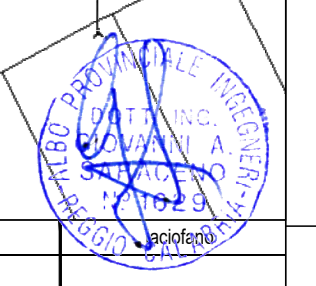
FILE NAME: GRE.EC.R.21.IT.W.14362.00.024.02

CLASSIFICATION: **A0** SCALE: **1:4000** PLOT SCALE: **1** di **5**

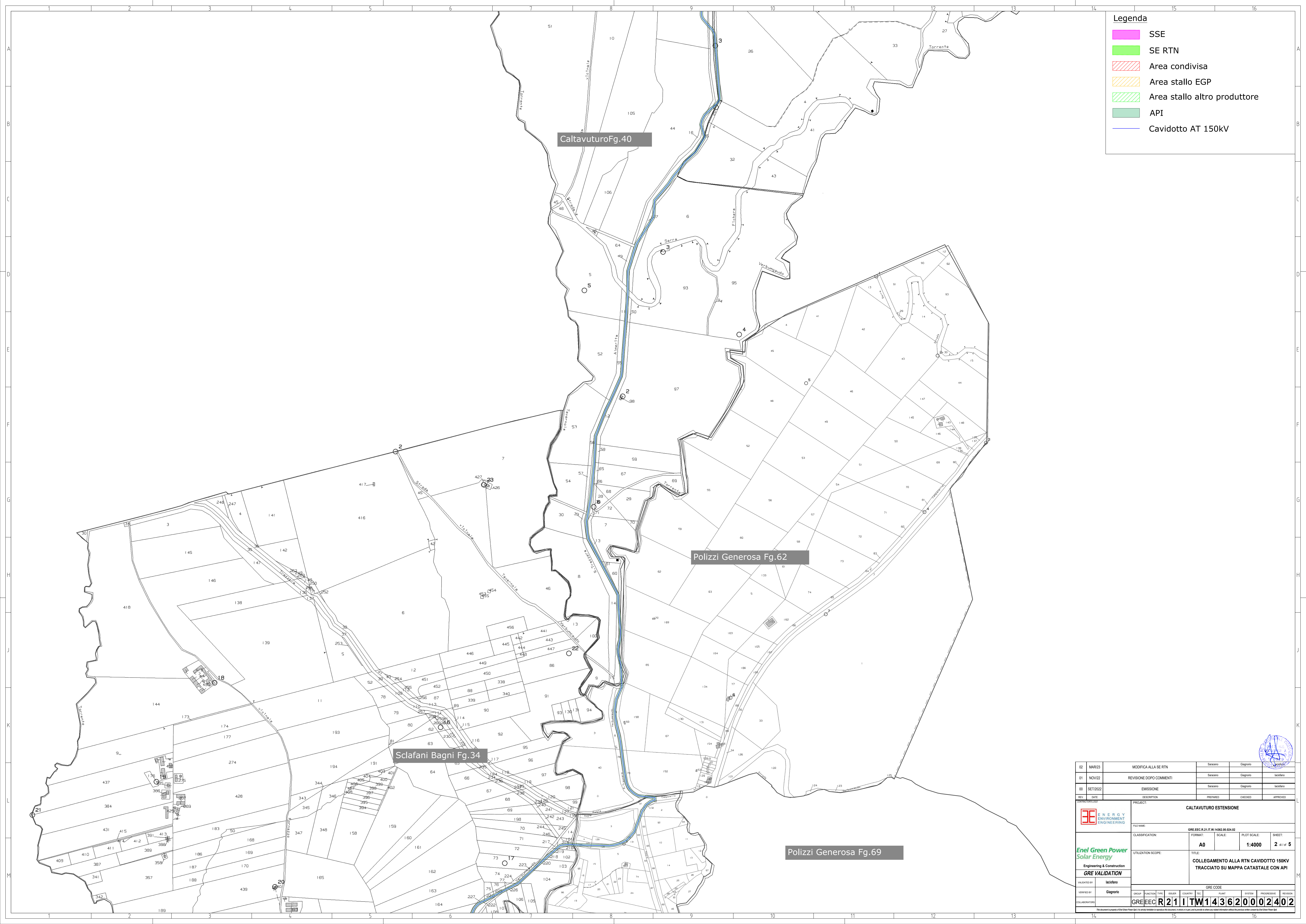
UTILIZATION SCOPE: **COLLEGAMENTO ALLA RTN CAVIDOTTO 150KV TRACCIATO SU MAPPA CATASTALE CON API**

VALIDATED BY: **Iacifano** GRE CODE

VERIFIED BY: **Gagorio** GROUP: **GREEC** FUNCTION: **R21** TYPE: **ITW** ISSUE: **143620002402** COUNTRY: **IT** PLANT: **1** SYSTEM: **1** PROGRESSIVE: **1** REVISION: **1**



Enel Green Power Solar Energy
Engineering & Construction
GRE VALIDATION



Legenda

- SSE
- SE RTN
- Area condivisa
- Area stallo EGP
- Area stallo altro produttore
- API
- Cavidotto AT 150kV

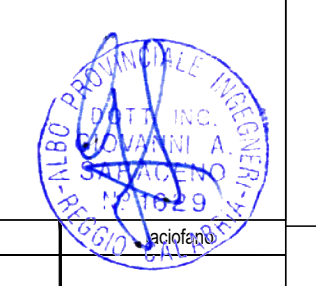
Caltavuturo Fg.40

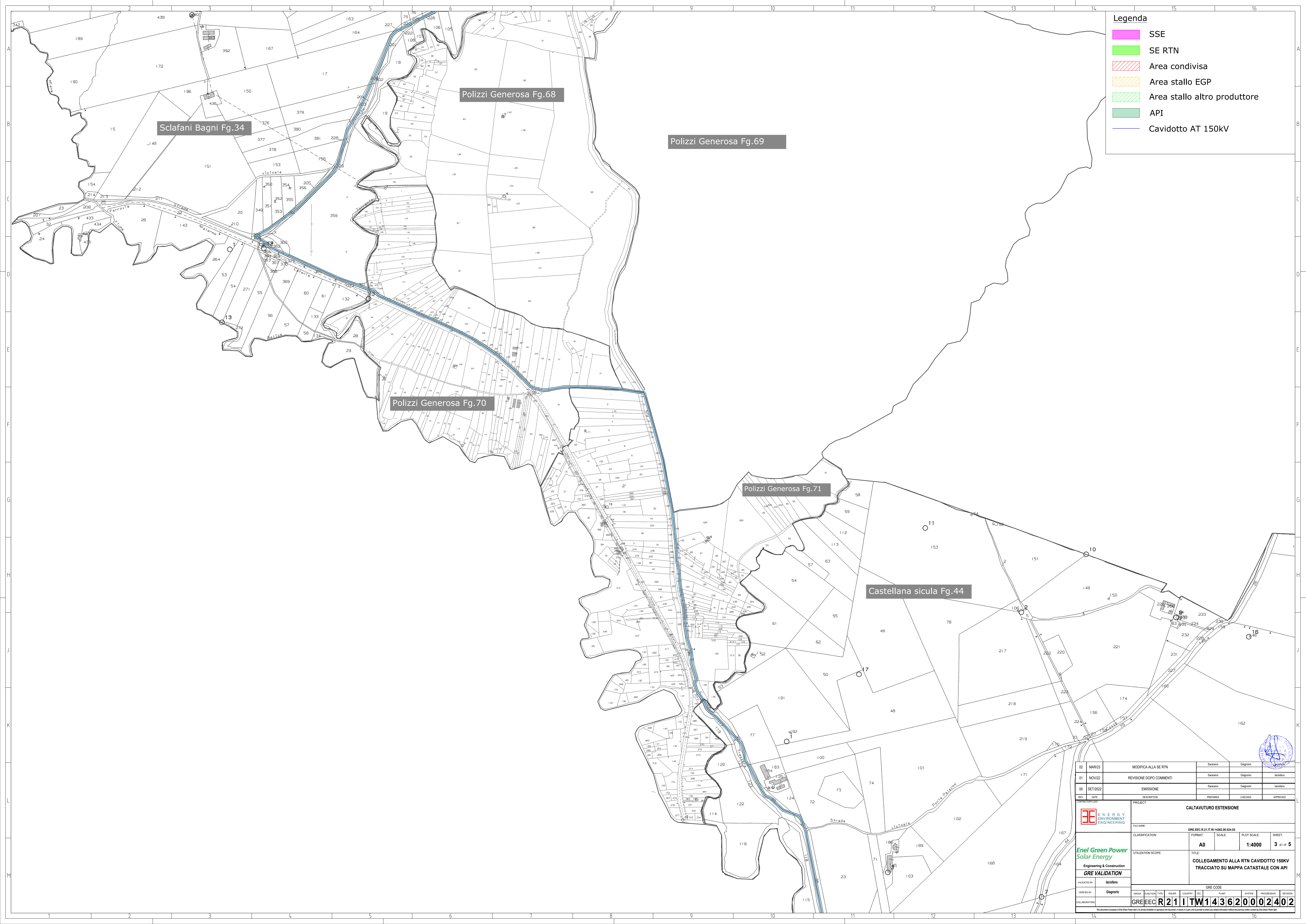
Polizzi Generosa Fg.62

Sclafani Bagni Fg.34

Polizzi Generosa Fg.69

| | | | | | |
|------------------------|------------------|---|-------------------------------|--------------------|------------------|
| 02 | MAR/23 | MODIFICA ALLA SE RTN | Sesano | Gagano | |
| 01 | NOV/22 | REVISIONE DOPO COMMENTI | Sesano | Gagano | Iacifano |
| 00 | SET/2022 | EMISSIONE | Sesano | Gagano | Iacifano |
| REV. | DATE | DESCRIPTION | PREPARED | CHECKED | APPROVED |
| | | PROJECT: CALTAVUTURO ESTENSIONE | | | |
| GRE VALIDATION | | FILE NAME: GRE.EEC.R.21.IT.W.14362.00.024.02 | | | |
| CLASSIFICATION: | | FORMAT: A0 | SCALE: 1:4000 | PLOT SCALE: 2 di 5 | SHEET: 2 di 5 |
| UTILIZATION SCOPE: | | TITLE: COLLEGAMENTO ALLA RTN CAVIDOTTO 150KV TRACCIATO SU MAPPA CATASTALE CON API | | | |
| VALIDATED BY: Iacifano | GROUP: GRE.EEC | | GRE CODE: R21 ITW143620002402 | | |
| VERIFIED BY: Gagano | GROUP: GRE.EEC | FUNCTION: R21 | TYPE: ITW | NUMBER: 14362 | COUNTRY: 00 |
| COLLABORATORS: | PROJECT: GRE.EEC | PLANT: R21 | SYSTEM: ITW | PROGRESSIVE: 14362 | REVISION: 002402 |





Legenda

- SSE
- SE RTN
- Area condivisa
- Area stallo EGP
- Area stallo altro produttore
- API
- Cavidotto AT 150kV

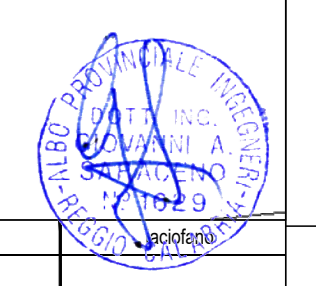
| | | | | | |
|------|----------|-------------------------|----------|---------|----------|
| 02 | MAR/23 | MODIFICA ALLA SE RTN | Seseno | Gagnoro | |
| 01 | NOV/22 | REVISIONE DOPO COMMENTI | Seseno | Gagnoro | Iacifano |
| 00 | SET/2022 | EMISSIONE | Seseno | Gagnoro | Iacifano |
| REV. | DATE | DESCRIPTION | PREPARED | CHECKED | APPROVED |

Enel Green Power Solar Energy
Engineering & Construction
GRE VALIDATION

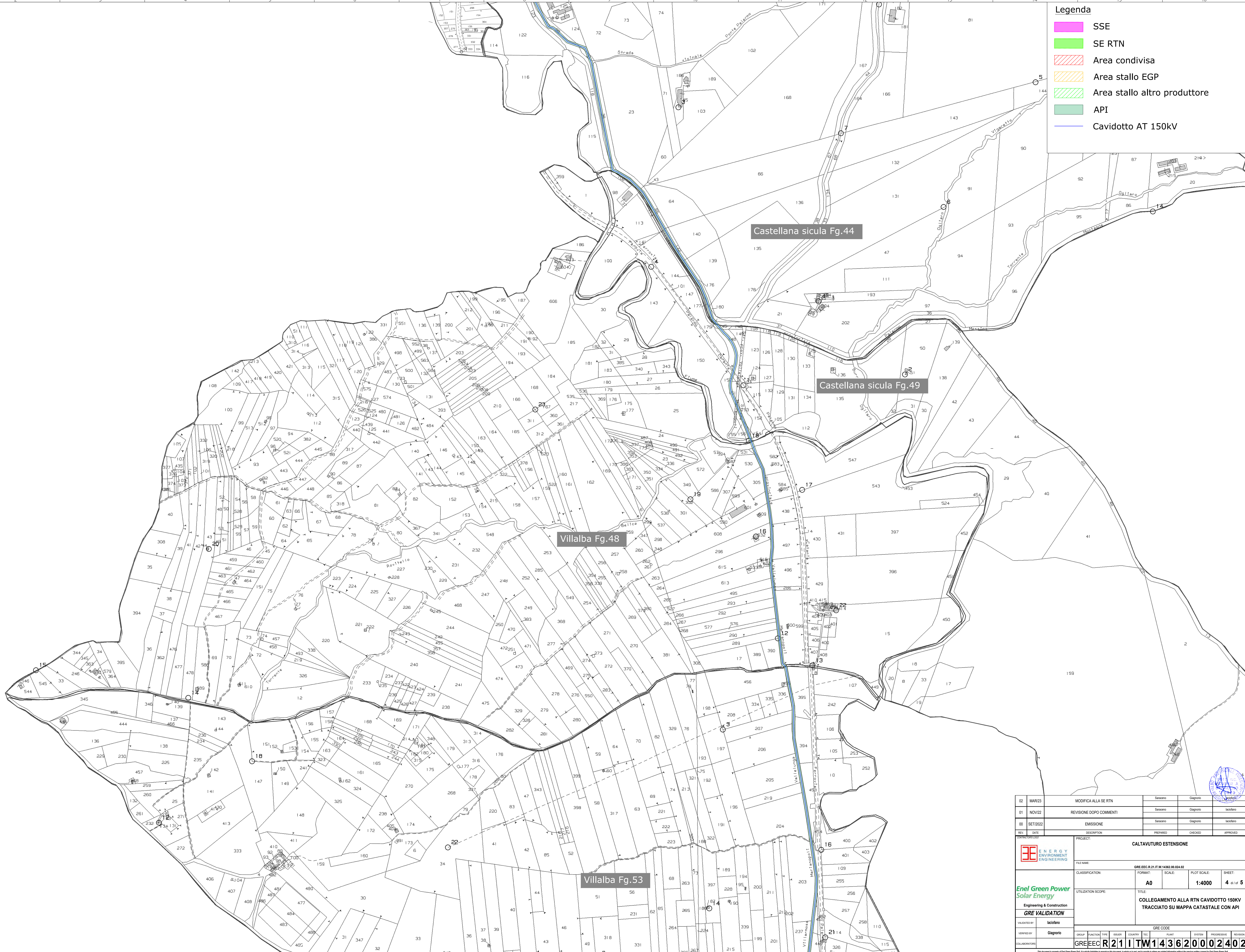
PROJECT: CALTAVUTURO ESTENSIONE

| | | | | | |
|--|--------------------|------------|---|---------------|----------|
| FILE NAME: GRE.EEC.R.21.IT.W.14362.00.024.02 | CLASSIFICATION: A0 | FORMAT: A0 | SCALE: 1:4000 | PLOT SCALE: 3 | SHEET: 5 |
| UTILIZATION SCOPE: | | | TITLE: COLLEGAMENTO ALLA RTN CAVIDOTTO 150KV TRACCIATO SU MAPPA CATASTALE CON API | | |

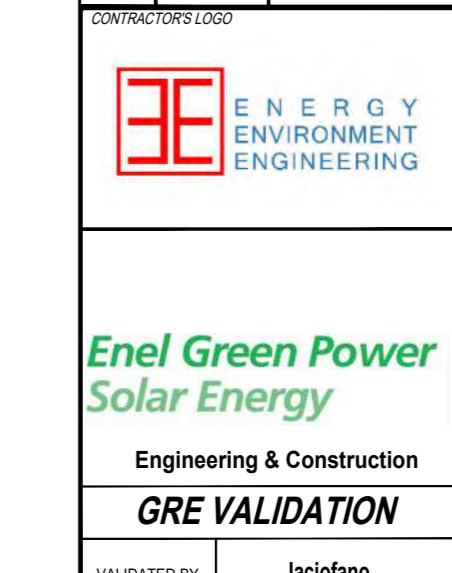
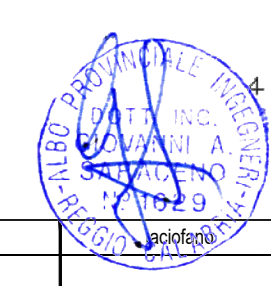
| | | | | | | | | | |
|--|------------|---------------------------|---------------|-------------|-------------|--------------------|------------|--------------------|--------------|
| VALIDATED BY: Gagnoro | GROUP: GRE | FUNCTION: PROJECT MANAGER | TYPE: PROJECT | ISSUER: GRE | COUNTRY: IT | PLANT: CALTAVUTURO | SYSTEM: PV | PROGRESSIVE: 02402 | REVISION: 00 |
| GRE.EEC.R.21.IT.W.14362.00.024.02 | | | | | | | | | |



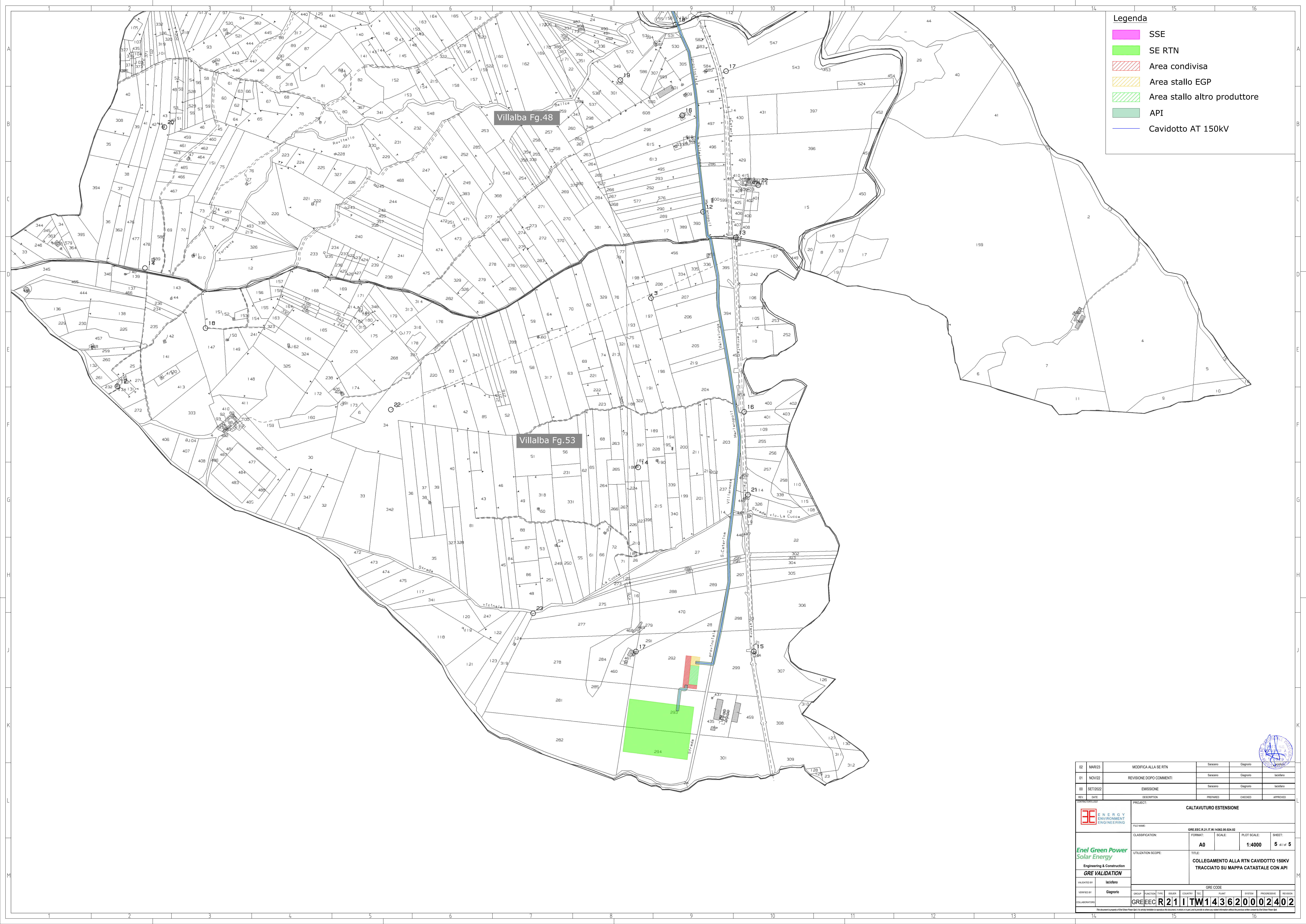
- Legenda**
- SSE
 - SE RTN
 - Area condivisa
 - Area stallo EGP
 - Area stallo altro produttore
 - API
 - Cavidotto AT 150kV



| | | | | | |
|--|--------------|---|--------------------|-----------|------------------------|
| 02 | MAR/23 | MODIFICA ALLA SE RTN | Sezono | Gagorno | |
| 01 | NOV/22 | REVISIONE DOPO COMMENTI | Sezono | Gagorno | Iacifano |
| 00 | SET/2022 | EMISSIONE | Sezono | Gagorno | Iacifano |
| REV. | DATE | DESCRIPTION | PREPARED | CHECKED | APPROVED |
| PROJECT: CALTAVUTURO ESTENSIONE | | | | | |
| FILE NAME: GRE.EEC.R.21.IT.W.14362.00.024.02 | | | | | |
| CLASSIFICATION: | FORMAT: A0 | SCALE: 1:4000 | PLOT SCALE: 4 di 5 | SHEET: | |
| UTILIZATION SCOPE: | | TITLE: COLLEGAMENTO ALLA RTN CAVIDOTTO 150KV TRACCIATO SU MAPPA CATASTALE CON API | | | |
| VALIDATED BY: Iacifano | | | GRE CODE | | |
| VERIFIED BY: Gagorno | GROUP: GREEC | FUNCTION: R21 | TYPE: IT | ISSUER: W | PLANT: 14362.00.024.02 |
| COLLABORATORS: | | GREEC R21 IT W 14362.00.024.02 | | | |



GREEC R21 IT W 14362.00.024.02



Legenda

- SSE
- SE RTN
- Area condivisa
- Area stallo EGP
- Area stallo altro produttore
- API
- Cavidotto AT 150kV

| | | | | |
|--|----------|---|----------|---------|
| 02 | MAR/23 | MODIFICA ALLA SE RTN | Sesano | Gagorò |
| 01 | NOV/22 | REVISIONE DOPO COMMENTI | Sesano | Gagorò |
| 00 | SET/2022 | EMISSIONE | Sesano | Gagorò |
| REV. | DATE | DESCRIPTION | PREPARED | CHECKED |
| Enel Green Power Solar Energy Engineering & Construction GRE VALIDATION | | PROJECT: CALTAVUTURO ESTENSIONE FILE NAME: GRE.EEC.R.21.IT.W.14362.00.024.02 CLASSIFICATION: A0 SCALE: 1:4000 PLOT SCALE: 5 di 5 SHEET: | | |
| VALIDATED BY: laciarno VERIFIED BY: Gagorò COLLABORATORS: | | TITLE: COLLEGAMENTO ALLA RTN CAVIDOTTO 150KV TRACCIATO SU MAPPA CATASTALE CON API GRE CODE: R21ITW143620002402 | | |

