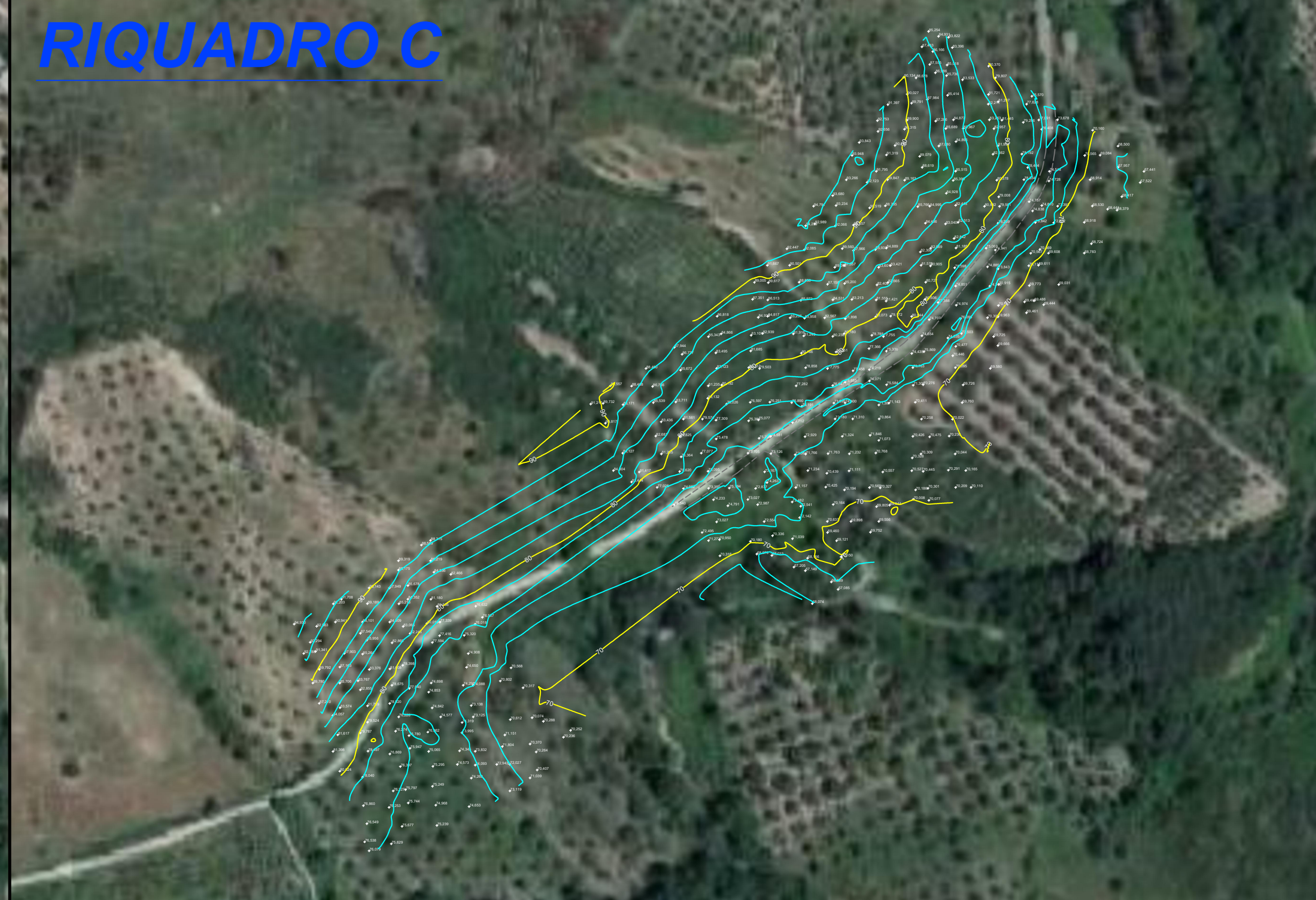


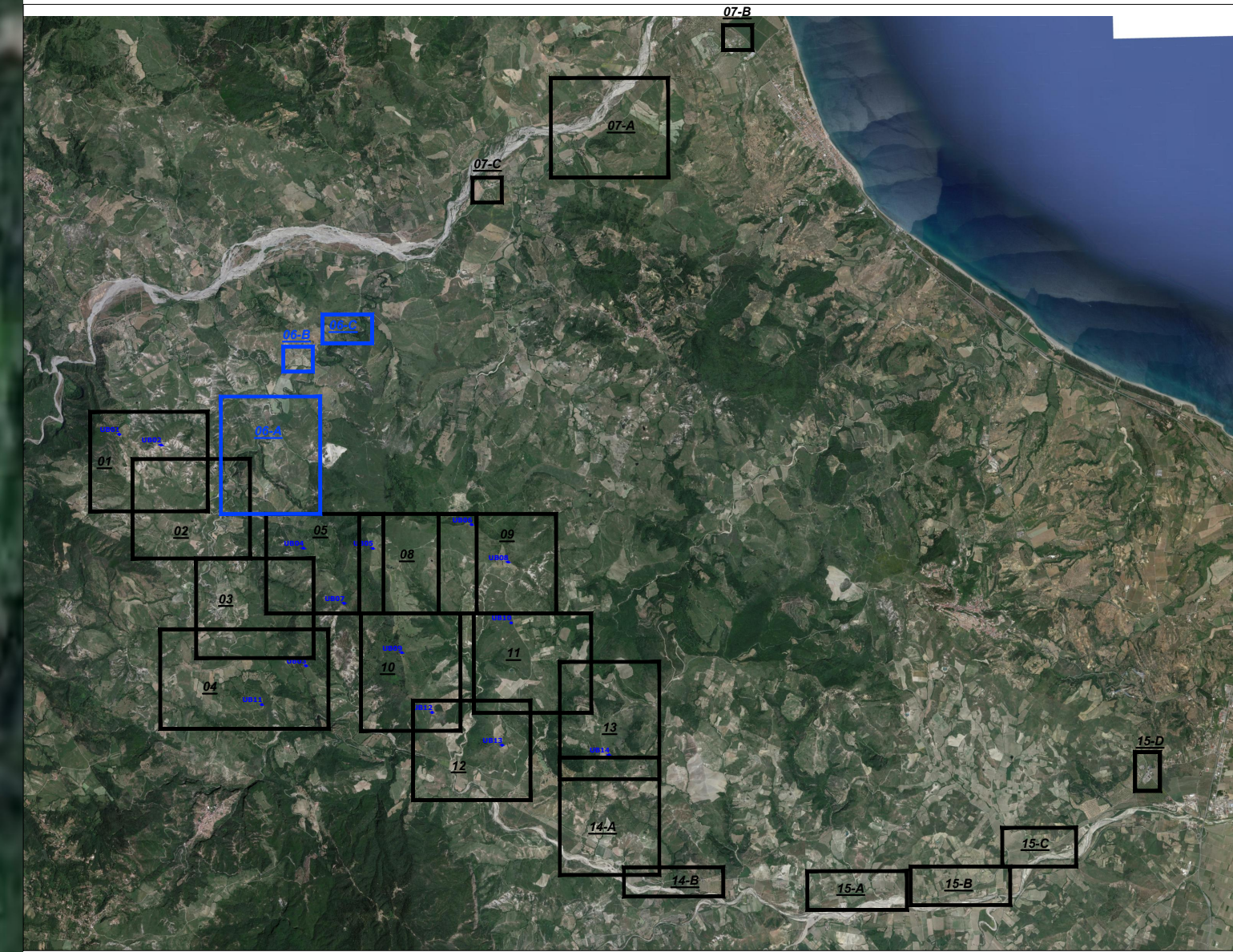
RIQUADRO B



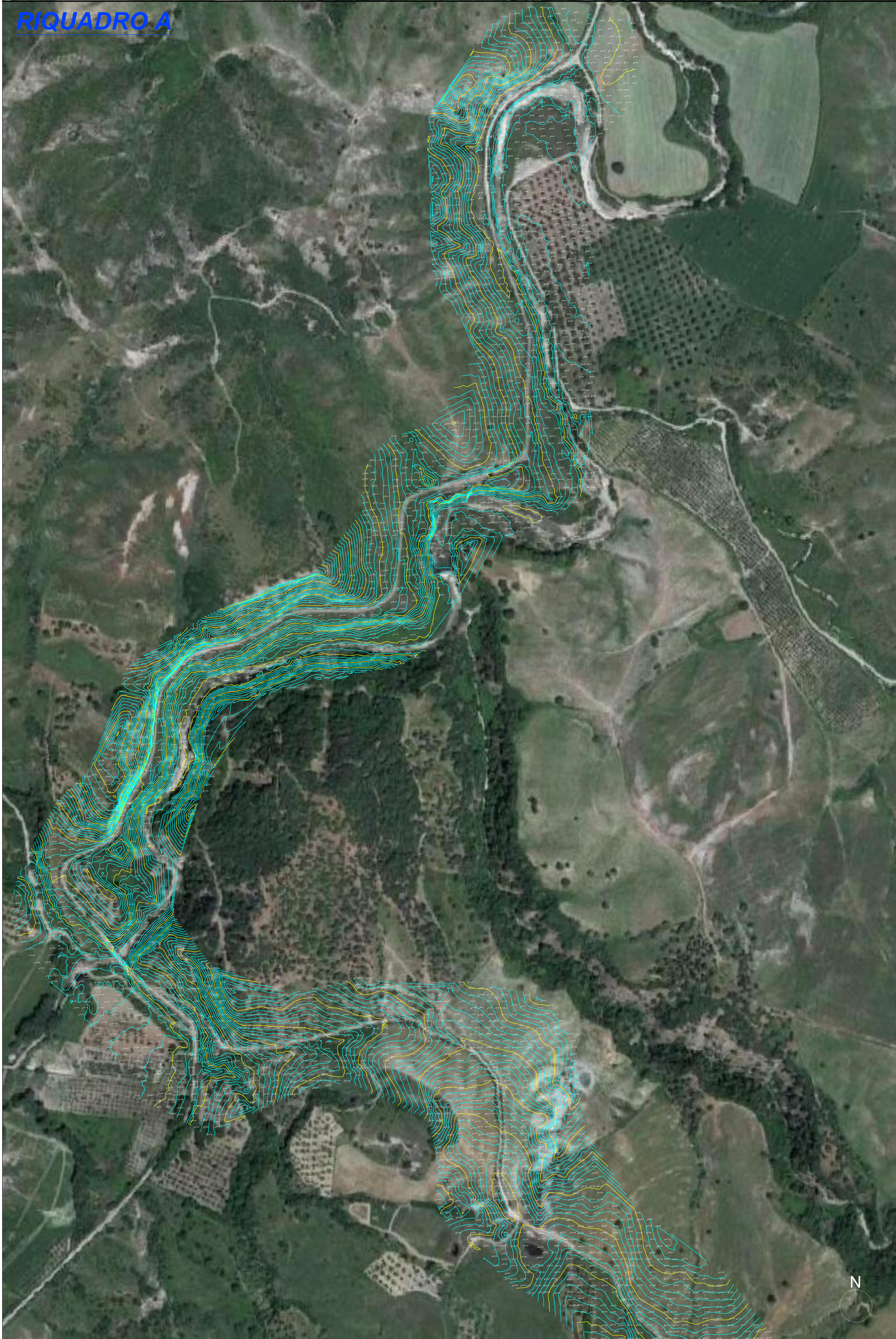
RIQUADRO C



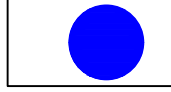

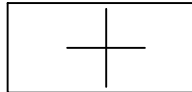
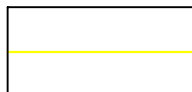
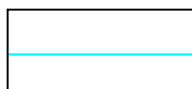
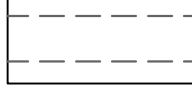
Key-Map 1:100.000



RIQUADRO A



Legenda

-  Posizione Aerogeneratori
-  Identificativo Aerogeneratore
-  Punto battuto e relativa quota terreno
-  Curve di livello intervallo 10,00 mt.
-  Curve di livello intervallo 2,00 mt.
-  Strada esistente



Comittente: Euria S.r.l.,
Piazza Europa, 14
87100 Cosenza

Documento: **PROGETTO DEFINITIVO**


Titolo del Progetto: **PARCO EOLICO "UMBRIATICO"**

Elaborato: **Rilievo Topografico
Tav. 06**

PROGETTO	DISCIPLINA	AMBITO	TIPO ELABORATO	PROGRESSIVO	SCALA
W-UBR	P	CP	PR	06	1:2000

NOME FILE: W-UBR-P-CP-PR-06_Rilievo Topografico Tav. 06

Progettazione:

 Ing. Saverio Pagliuso

Ing. Mario Francesco Perri

Ing. Giorgio Salatino

Rev.	Prima Emissione	Descrizione Revisione	Redatto	Controllato	Approvato
00	10/2023	PRIMA EMISSIONE	GEMSA PRO	GEMSA PRO	Euria S.r.l.

